

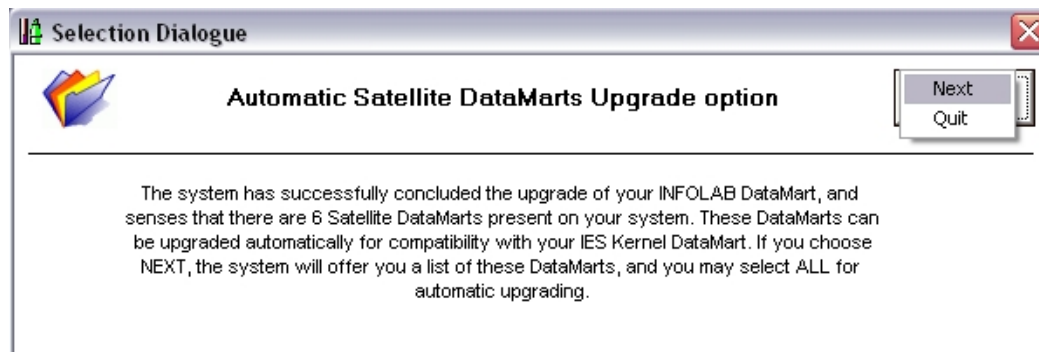
: INFOLAB BUSINESS - UPGRADE

Introduction

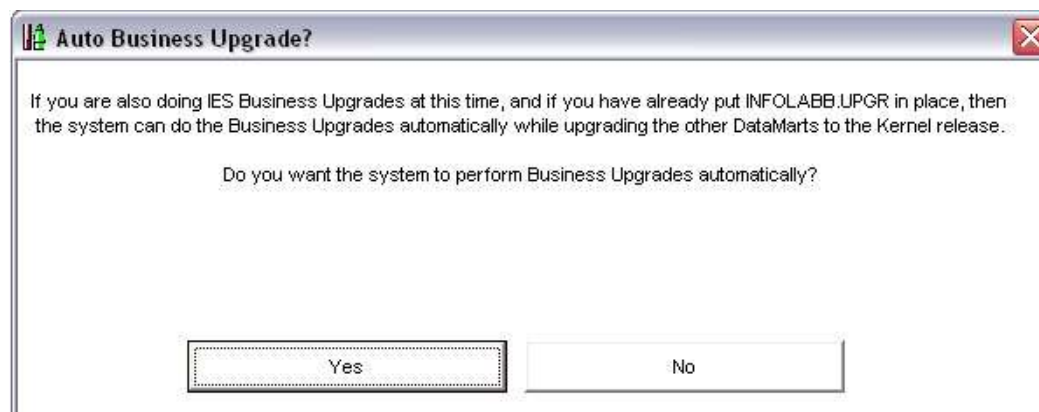
The purpose of this Document is to describe how to UPGRADE your IES Business Server DataMart(s).

Auto Upgrading Infolab Business Server DataMart(s)

Business Upgrades, i.e. 1 or more IES Business DataMarts, are usually upgraded as the next step after performing an IES Kernel Upgrade. As shown below, the system will automatically prompt for Satellite Upgrades (i.e. non-Kernel DataMarts using IES).



When you choose NEXT, the system will offer a list of DataMarts on the system that can be upgraded, and it is typical to select ALL. Then the system will prompt whether to perform Business Upgrades automatically while performing the Satellite Upgrades (a Satellite upgrade to each other DataMart is necessary after a Kernel Upgrade, i.e. to bring each DataMart in sync with the latest version of Kernel).



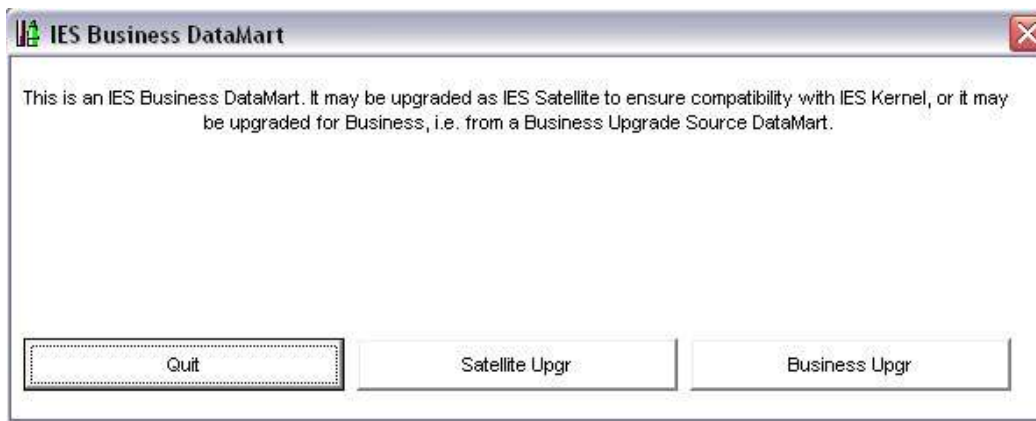
If you have indeed installed the source DataMart for the Business Upgrade(s), then of course you may choose YES. In this case, all selected Satellites are upgraded and any Satellites that are also Business DataMarts are upgraded for Business as well.

Manual Business Upgrade

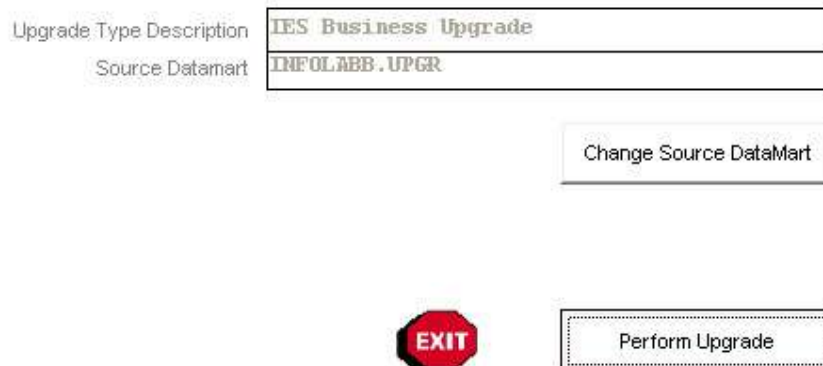
Any IES Business DataMart may also be upgraded manually, i.e. on demand, by choosing Systems Administration (within the Business DataMart to be upgraded), then Next Upgrade, then Upgrade Wizard.



The system will prompt whether to perform a Satellite Upgrade (to bring in sync with Kernel) or a Business Upgrade.



After choosing the appropriate option, just choose "Perform Upgrade" on the Upgrade Screen.



© Infolab, 2006

This Documentation is copyrighted by Infolab (Pty) Ltd. [www.infolab.cc] All rights are reserved. Licensed INFOLAB Users are granted permission, for internal use ONLY, to reproduce the Documentation, and to include amendments dealing with specific instructions local to your installation.