

**: INFOLAB ENTERPRISE – INSTALLATION**

**Introduction**

The purpose of this Document is to describe how to install your Infolab Enterprise Server (IES).

Steps to install the IES Kernel	Detail at -
1) Create a 'infolabc' User Code, without password	Note 1
2) Download Components S1 & S2a	Note 2
3) Use S1 to install the 'infolabc' and 'infolabrxm' DataMarts	Note 3
4) Use S2a to install 'infolab' DataMart	Note 4
5) Make a Password for user DM and LogOn	Note 5

**Note 1:** Create a 'infolabc' User Code, without Password

Using a Telnet Session, you can log on to dm,dm. At TCL, you can copy the User Code 'infolabc' from User Code 'dm'.

Using a Telnet Session, log on to dm,dm. Then copy User Code 'dm' to 'infolabc'

```

Telnet localhost
:who
2 dm dm
:copy users dm
to :infolabc

```

Edit the item 'infolabc' in the Users FileName, and ensure 'sys2' privileges, and that this User Code has NO password !

```

:u users infolabc

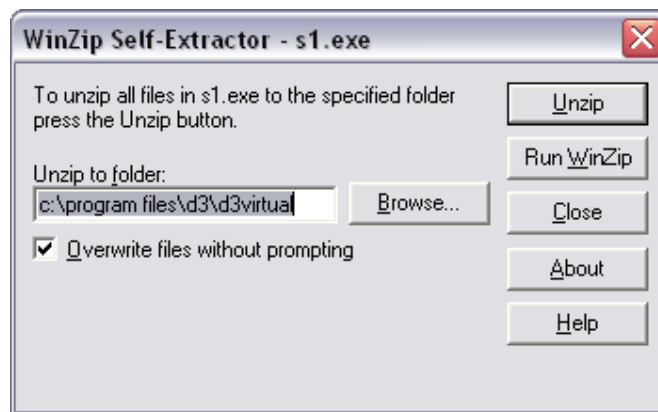
users 'infolabc' size = 163
name      Data manager
address
zip
phone
keys
password
privilege sys2
options
macro      term-type
10 sp-assign
11 brk-level
12 esc-data
13 set-sym gsym
14 speller-off
        
```

The 'infolabc' User Code is required for phased Log On with IES Navigator Sessions. It is NOT defined as a Logon UserCode in the 'infolab' DataMart!

**Note 2:** Download Components S1 and S2a.

Get these components from the DOWNLOADS page. They contain the 'infolabc', 'infolabrxm' and 'infolab' DataMarts that you need to install.

**Note 3:** Use S1 to install the 'infolabc' and 'infolabrxm' DataMarts.



When 'S1' is unzipped, it defaults to the D3Virtual Folder. Check that the drive is correct for your D3 Installation, though.

Now, in your D3Virtual Folder, there is a file called 's1'. You need to rename this to 'pseudo0', so it can be attached as a pseudo device.

```

Telnet localhost

:t-select
Tape # Type Status Density 02 Apr 2004 21:51:19 Owner Device Name
-----
0 | Floppy | 3 1/2" 1.44M | | \\.A:
1 | Floppy | Pseudo Floppy | | C:\PROGRA~1\...grams\D3Data.D3P
2 | Floppy | Pseudo Floppy | | C:\PROGRA~1\...tual\Pseudo0.D3P
3 | Floppy | Pseudo Floppy | 2*+ | C:\Program F...3Virtual\pseudo0

Enter unit number of device to select: 3
Block size: 500
[1705] Tape device is assigned to a hard disk file <pseudo floppy>.
:add-accounts
Block size: 500
[94] end of file
Block size: 500
[94] end of file
Block size: 500^L 01F4 21:50:46 02 Apr 2004 13236192 DATA infolabc infolabc
^01

Please wait while 'infolabc' is restored.
infolabc
1 > infolabc 8909,7
1 > infolabc > zbp 8917,3
1 > infolabc > zbp > zbp 8921,3
restore completed
Block size: 500^L 01F4 21:50:55 02 Apr 2004 13236192 DATA infolabrxm
^01

Please wait while 'infolabrxm' is restored.
infolabrxm
1 > infolabrxm 8956,47
1 > infolabrxm > zbp 9004,53
1 > infolabrxm > zbp > zbp 65709,53
restore completed
End Of Data

2 accounts restored out of 2 found.
:

```

Attach the pseudo device, and either restore the Accounts with 'add-accounts' or with 'md-restore'.

Finally, just do: update-md on 'infolabc' and 'infolabrxm'

Note: On Windows Servers, please install all DataMarts in FSI rather than VME (therefore you will use 'md-restore' instead of 'add-accounts' and place 'infolabc' as well as 'infolabrxm' in the FSI).

**Note 4:** Use S2a to install the 'infolab' DataMart.

Follow the same procedure as above to unzip 'S2a', and install 'infolab', also called 'infolab' on the tape. Remember to do: update-md infolab

Note: On Windows Servers, please install the 'infolab' DataMart in FSI rather than VME.

**Note 5:** Make a password for User Code 'dm' and Log On.

Since 'dm' is a standard User Code with any D3 installation, we include this User Code with full Access throughout IES, already set up. However, if you have your NAVIGATOR Client software installed, and wish to log on as User 'dm', the Client

INFOLAB ENTERPRISE SERVER: INSTALLATION

will insist on a password. If your User Code 'dm' does not have a password, then give it one.

The screenshot shows a Telnet window titled 'Telnet localhost'. The terminal output displays the configuration for a user named 'dm'. A white callout box with the text 'Ensure that user `dm` has a password ...' has a red arrow pointing to the 'password' field in the configuration list.

```

:u users dm
users 'dm' size = 165
name Data Manager
address
zip
phone
keys
password AEE16396
privilege sys2
options
macro term-type
10 sp-assign
11 brk-level
12 esc-data
13 set-sym gsym
14 speller-off
  
```

Your IES service should now be available. If you have already browsed the NAVIGATOR User Manual, and installed your NAVIGATOR Client, then you are ready to connect a Session with IES NAVIGATOR Client.

Once you can get into the system, it is time to have a look at the SYSTEMS ADMINISTRATION User Manual(s), so you can learn how to make your own User Code, with Access Menus, to log on to IES.

© Infolab, 2006

This Documentation is copyrighted by Infolab (Pty) Ltd. [ [www.infolab.cc](http://www.infolab.cc) ] All rights are reserved. Licensed INFOLAB Users are granted permission, for internal use ONLY, to reproduce the Documentation, and to include amendments dealing with specific instructions local to your installation.