

INFOLAB RXM PORTAL - INSTALLATION

Before you read this Document, you should have seen the OVERVIEW.

Purpose of this Manual

The purpose of this User Manual is to –

- a) Explain the Prerequisites for operating an INFOLAB_{rxm} Portal
- b) Explain the Installation Procedure step-by-step

Prerequisites:

- a) JDK (Java Development Kit) –

Before you can install or run your INFOLAB_{rxm} Portal, you need to ensure that a JDK (J2SDK 1.4 or later, with SSE [Secure Socket Ext]) is configured on the Server that will host the Portal Service. If you do not yet have the JDK installed and configured, then do that before attempting installation of INFOLAB_{rxm}, since the Installer Object itself requires it.

If you do not know where to get a (free) JDK, then please try a Search Engine and search for “free JDK” or simply go directly to www.apache.org or <http://java.sun.com>

- b) INFOLAB Enterprise Server –

The INFOLAB Enterprise Server may be downloaded from www.infolab.cc (see ‘Downloads’ and / or ‘How to get Started’)

- c) The Portal Installation Object –

The INFOLAB_{rxm} Portal Installation Object may be downloaded from www.infolab.cc (see ‘Downloads’)

- d) Operating System –

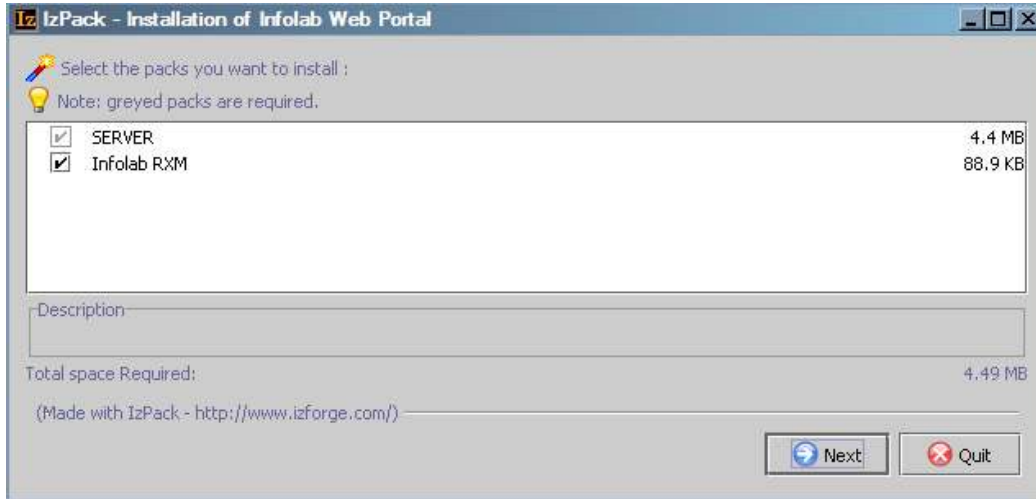
The INFOLAB_{rxm} Portal is designed to run on a range of Operating Systems that supports a Java Runtime Environment, e.g. Windows, Linux, Unix, etc. However, the Installation Script provided works specifically on Windows.

Procedure to Install:

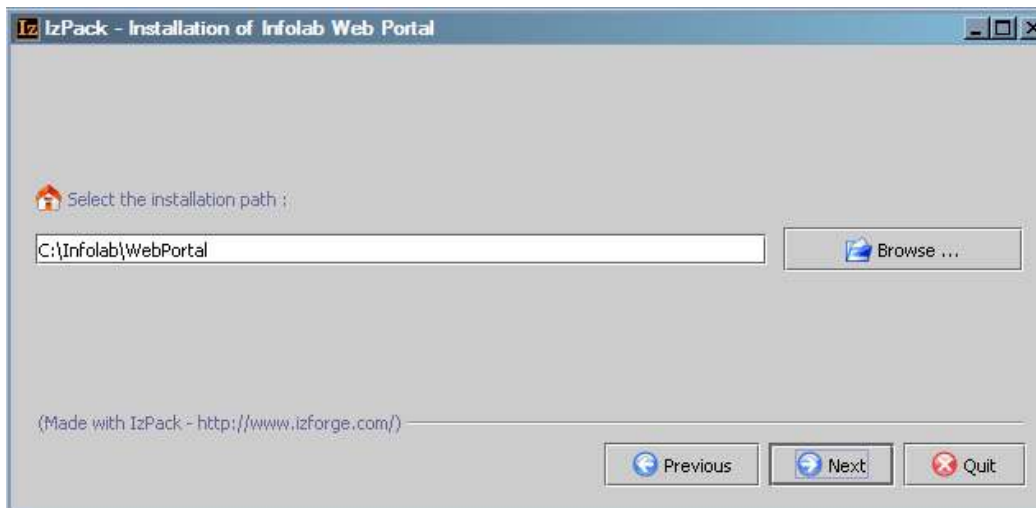
Once you have satisfied the prerequisites listed above, you may open the INFOLAB_{rxm}.jar file (inside the zipped ‘INFOLAB_{rxm}.exe’ which you have downloaded) –

When you ‘open’ or dbl-click the ‘INFOLAB_{rxm}.jar’ File, it should proceed with the picture shown below. If your system prompts you as to which program you want to use to open the ‘INFOLAB_{rxm}.jar’ File, then your Java Runtime Environment is probably not installed or configured properly ...

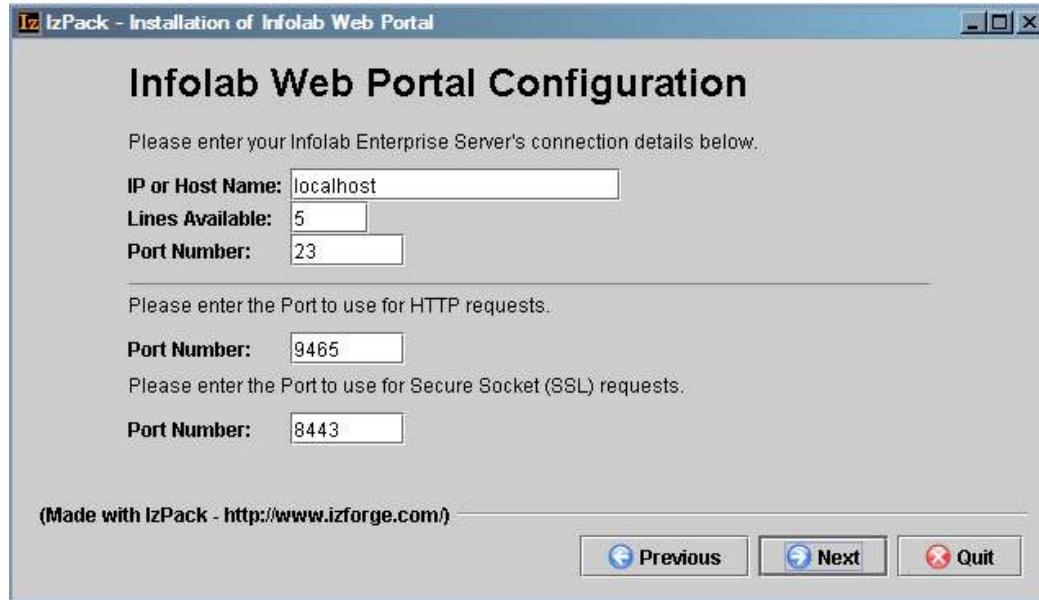
Infolab RXM Portal – Installation



The 'Server' Object is mandatory, and you need to install 'INFOLAB_{RXM}', which is selected by default. Total Space required = 4.5 MB, and you can simply select 'Next'.



The system will suggest installation on a path called \INFOLAB\WebPortal, and you can change this if you prefer. Certainly you should ensure that the drive (in this case defaulting to 'C:') is appropriate for your installation, and then select 'Next'.



The step shown above relates to 3 issues :

1) Connection Details for the Portal to the INFOLAB Enterprise Server

The INFOLAB_{rxm} Portal receives communications from Browser Connections (usually the Internet), and needs to 'talk' to the INFOLAB Enterprise Server. The INFOLAB Server may be on the same machine or a different Server, and the IP or Host Name is where INFOLAB_{rxm} will find the INFOLAB Server. In the above example, 'localhost' is specified. This can only work when both INFOLAB_{rxm} and INFOLAB Enterprise Server are running on the same machine, for instance a Laptop. More often, an IP Address will be specified.

The 'Lines Available' represent the maximum number of Connections INFOLAB_{rxm} is allowed to maintain with INFOLAB Enterprise Server.

The Port Number (23), will usually remain unchanged. '23' is a Telnet Communications port, and INFOLAB_{rxm} will use this port to 'talk' to INFOLAB Enterprise Server.

2) HTTP Port to use

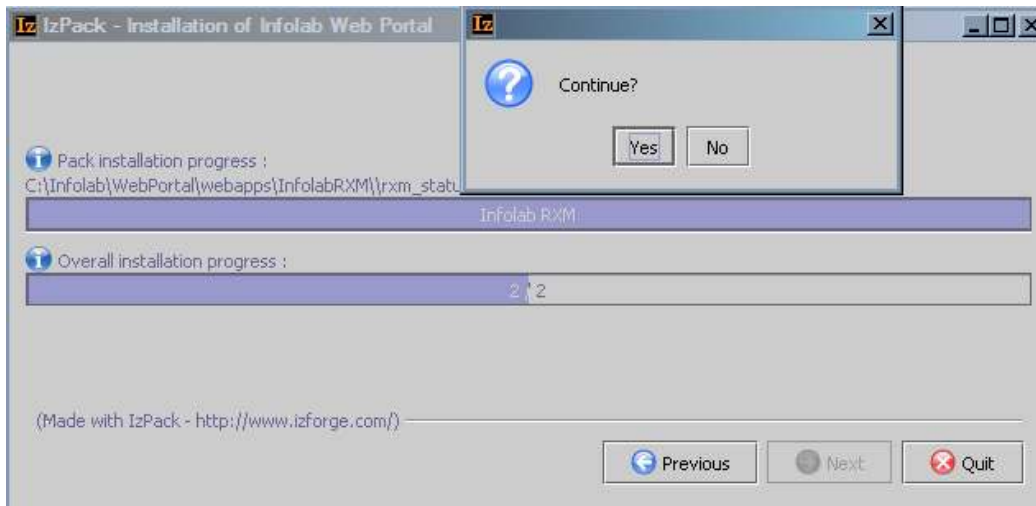
The standard port for Web Services is '80' and you may of course use it as well. In our example we have used '9465', which is equally valid and better in a number of respects. One benefit would be that it is not a standard port that would conflict with any other services, and also it is probably not 'blocked' by your Service Provider.

3) SSL Port to use

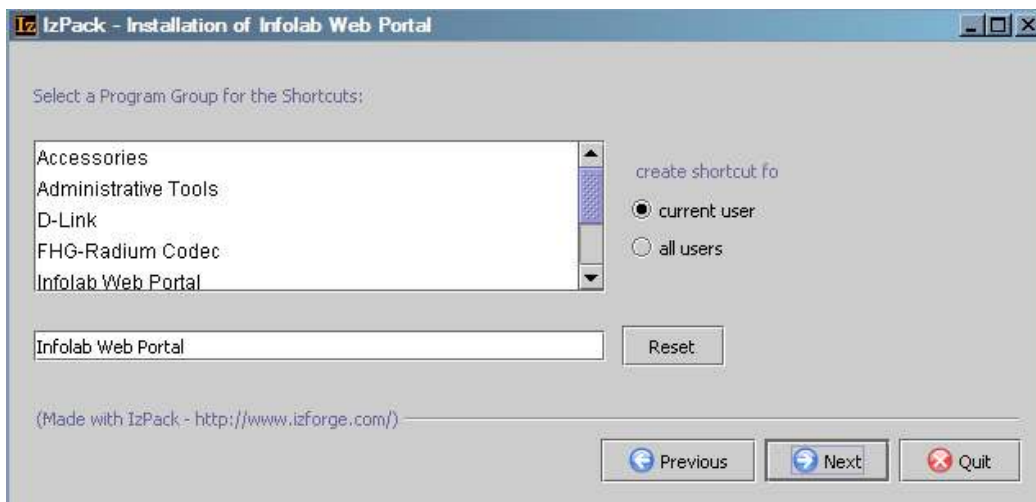
Here you choose the port to use for Secure Socket requests. (INFOLAB_{rxm} Supports both standard HTTP Requests as well as Secure Server (https)).

Once you have indicated your preferences, choose 'Next'.

Infolab RXM Portal – Installation



INFOLAB_{rxm} will now install, and once it displays [Finished], you may choose 'Next'.



When the installation of INFOLAB_{rxm} is complete, we recommend that you simply click 'Create Shortcuts' once, as this will include the necessary shortcuts on the 'All Programs' list (not your Desktop!) to start and stop the Portal Service.

Once you get this far, your INFOLAB_{rxm} Portal is duly installed.

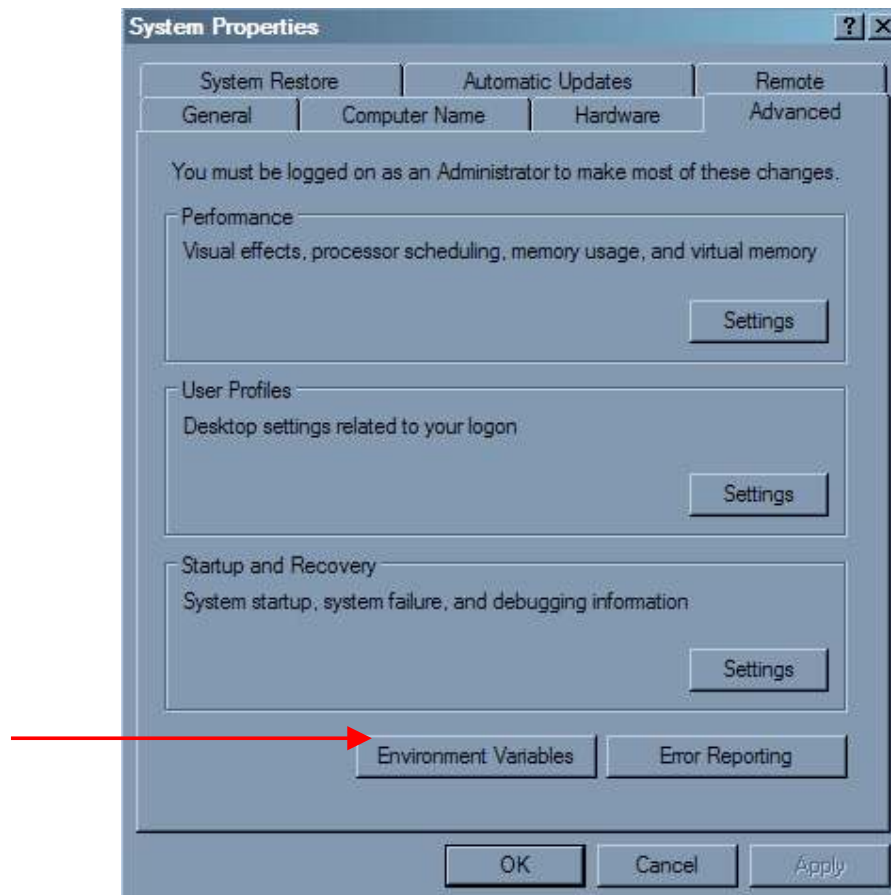
If you go to Start, All Programs (on a Windows platform, as it were), you should see the INFOLAB Web Portal there ...



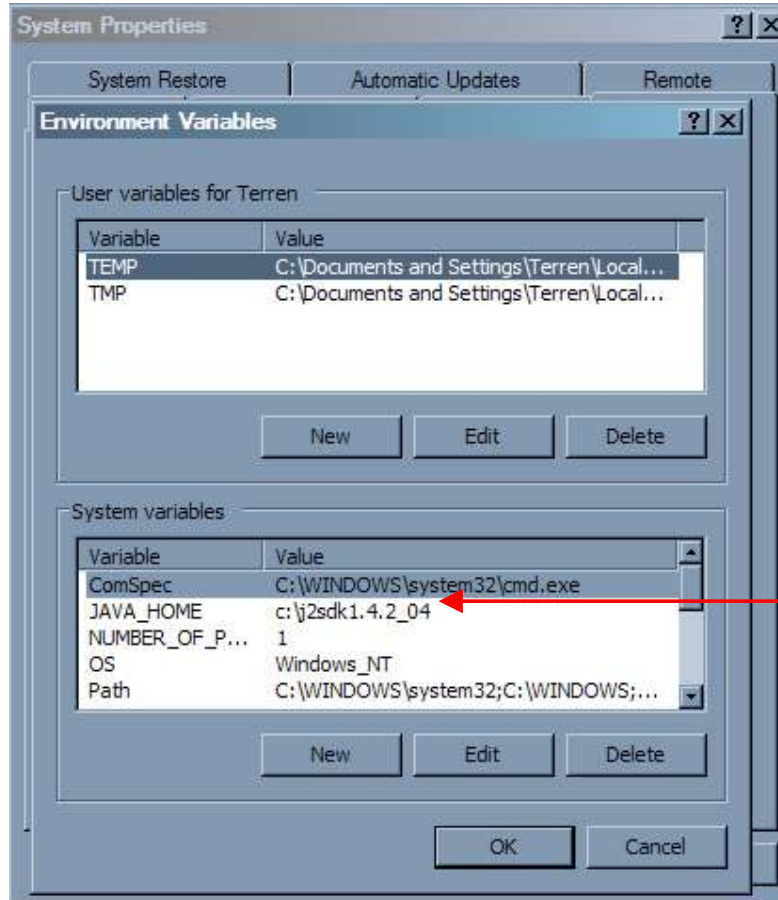
Environment Variables

It is necessary to ensure that your Environment Variables include the correct specification of 'JAVA-HOME'. When you install the JDK, this will probably be done for you by the installation process, but check it nevertheless.

Right-Click 'My Computer' to access 'Properties', and then choose the 'Advanced' tab.



When you choose 'Environment Variables', look for 'JAVA_HOME', and in the event that it is not there, use the 'NEW' option to include it. 'JAVA_HOME' should point to the installation folder of the JDK.



Certificate for Secure Servers

If you plan to use the Secure Server functions of the Portal, then you should either (buy and) install your Certificate, or else you can simply make one, and this is how you can do it.

- Use the command prompt (do Start, Run, cmd)
- Change Directory to the JDK root directory
- Change to the BIN Folder
- Use the 'keytool' command to create a Certificate, as follows: -

```
Keytool -genkey -alias tomcat -keyalg RSA
```

When prompted for a Password, use 'changeit' (LOWER case!), and answer the remaining prompts.

© Infolab, 2006

This Documentation is copyrighted by Infolab (Pty) Ltd. [www.infolab.cc] All rights are reserved. Licensed INFOLAB Users are granted permission, for internal use ONLY, to reproduce the Documentation, and to include amendments dealing with specific instructions local to your installation.