

Slide 1

Slide notes:



Slide 2

Slide notes: For Mastercode Masking, we go to Accounting Controls.



Slide 3

Slide notes:



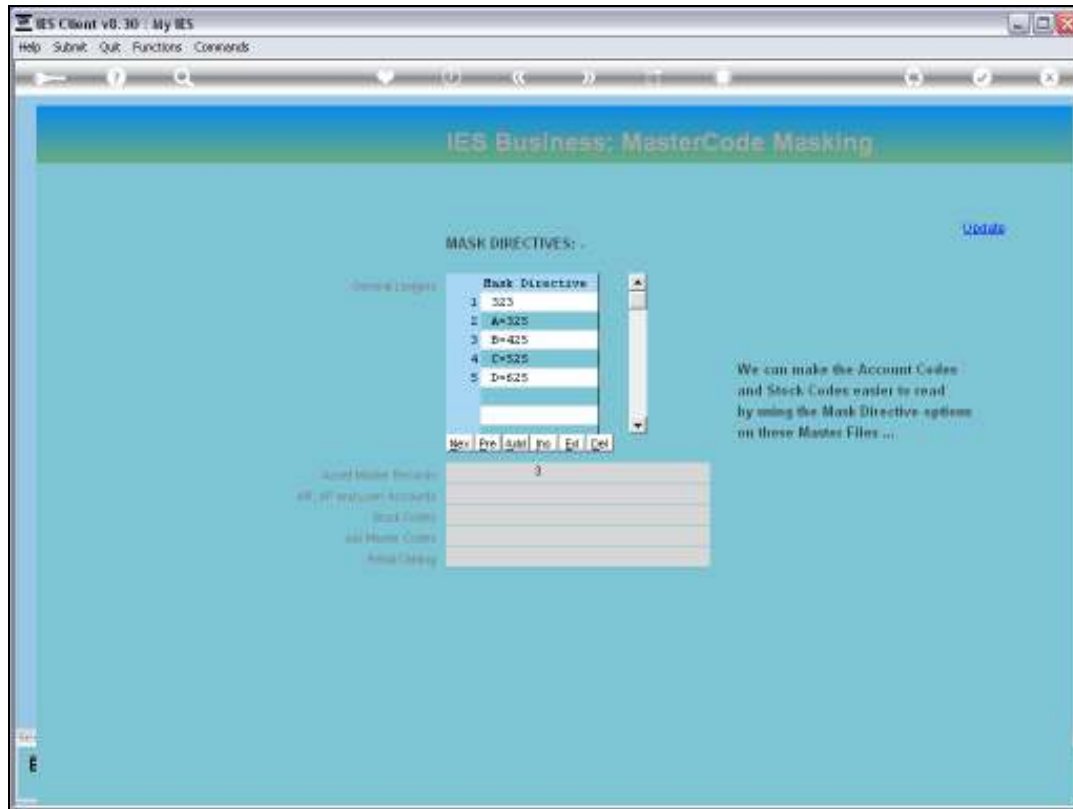
Slide 4

Slide notes:



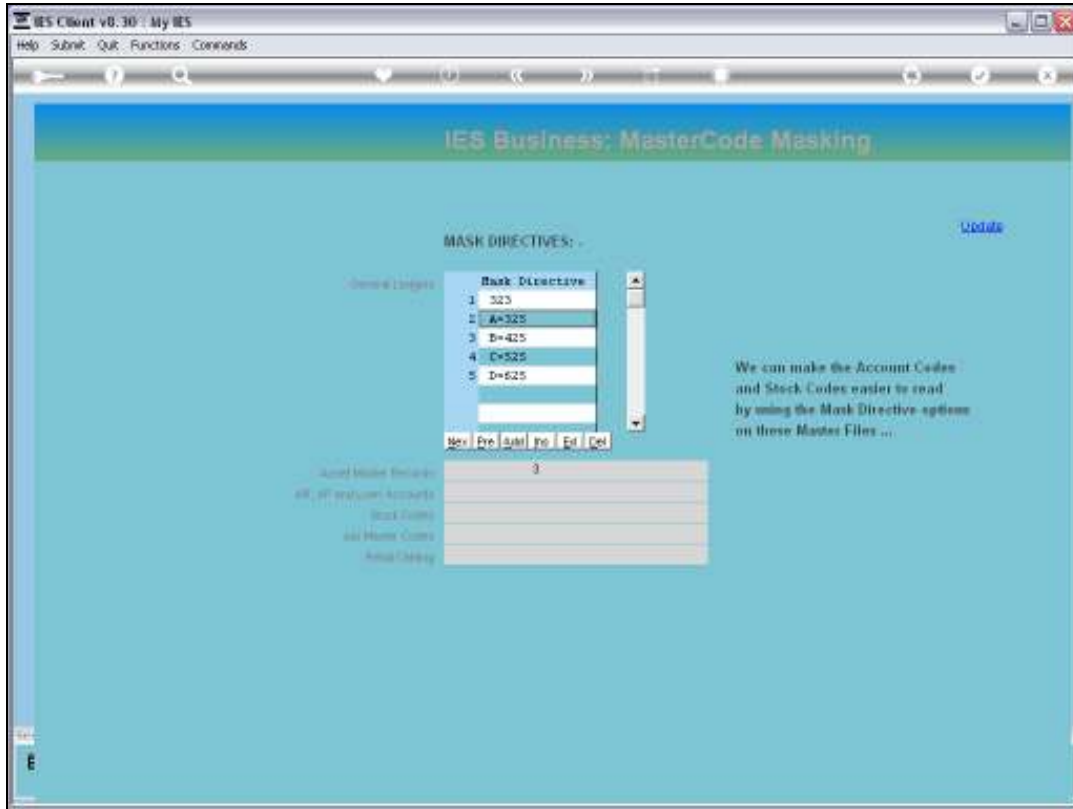
Slide 5

Slide notes:



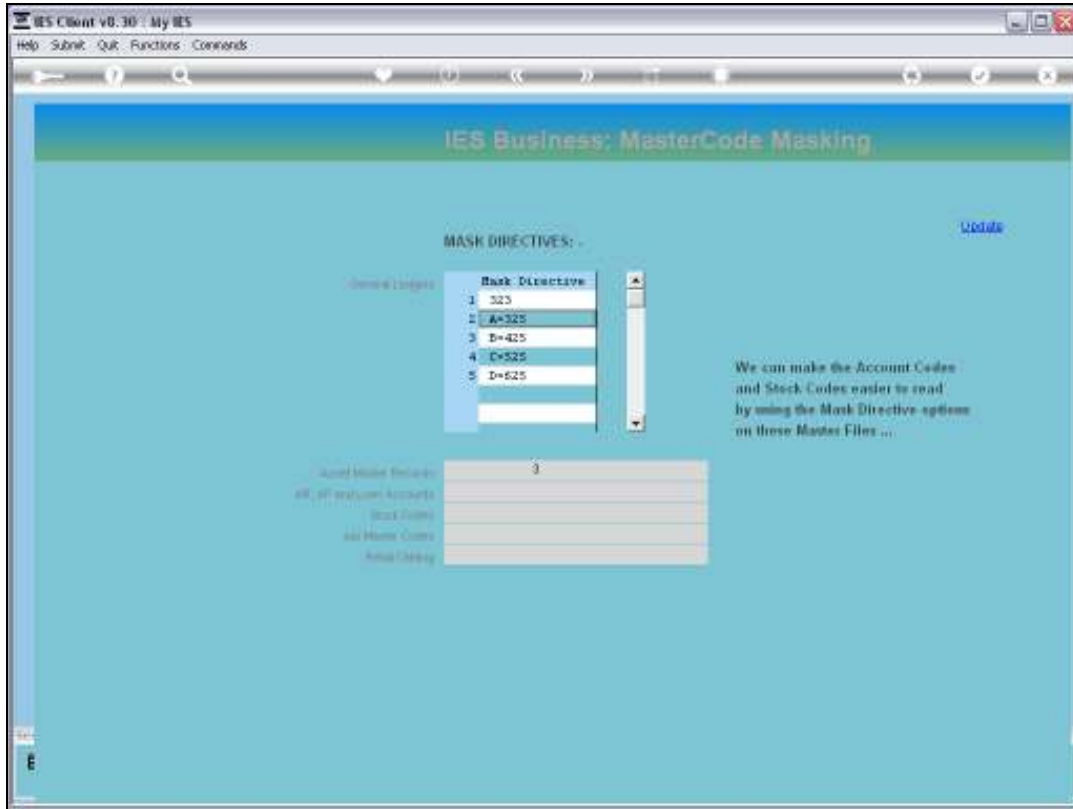
## Slide 6

Slide notes: The same function is used for masking of all Account Codes, including the General Ledger as well as for the subsidiary Ledgers where the function is available.



Slide 7

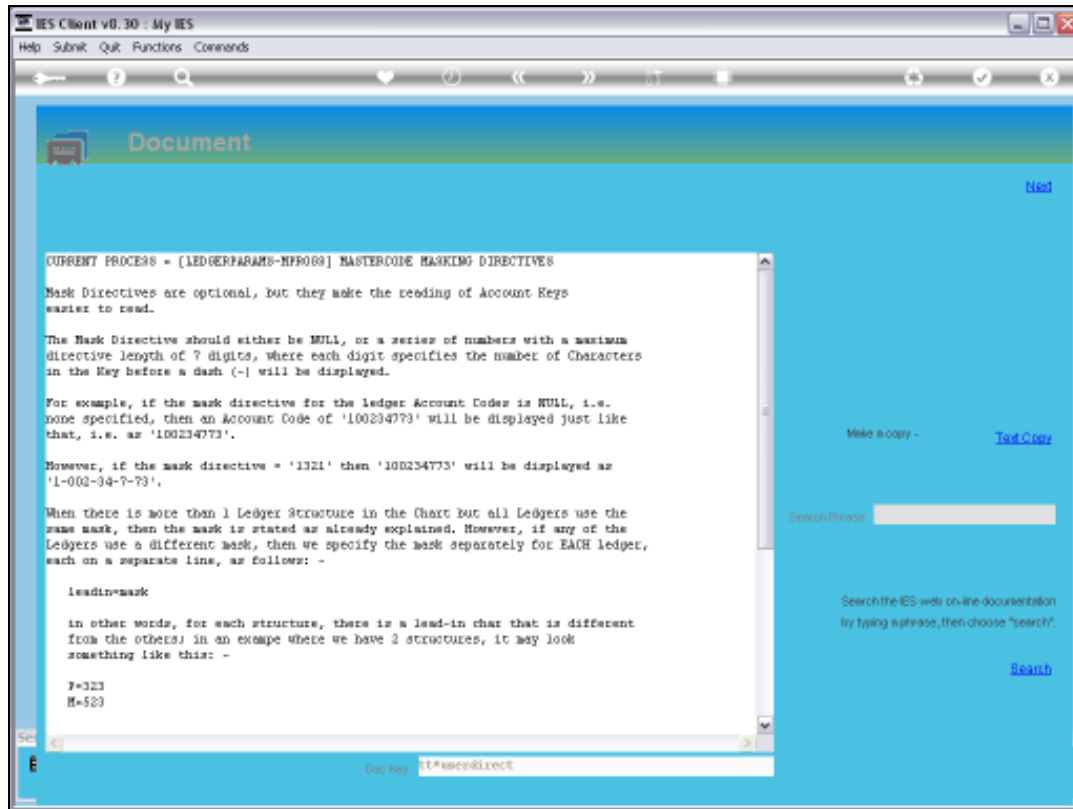
Slide notes:



Slide 8

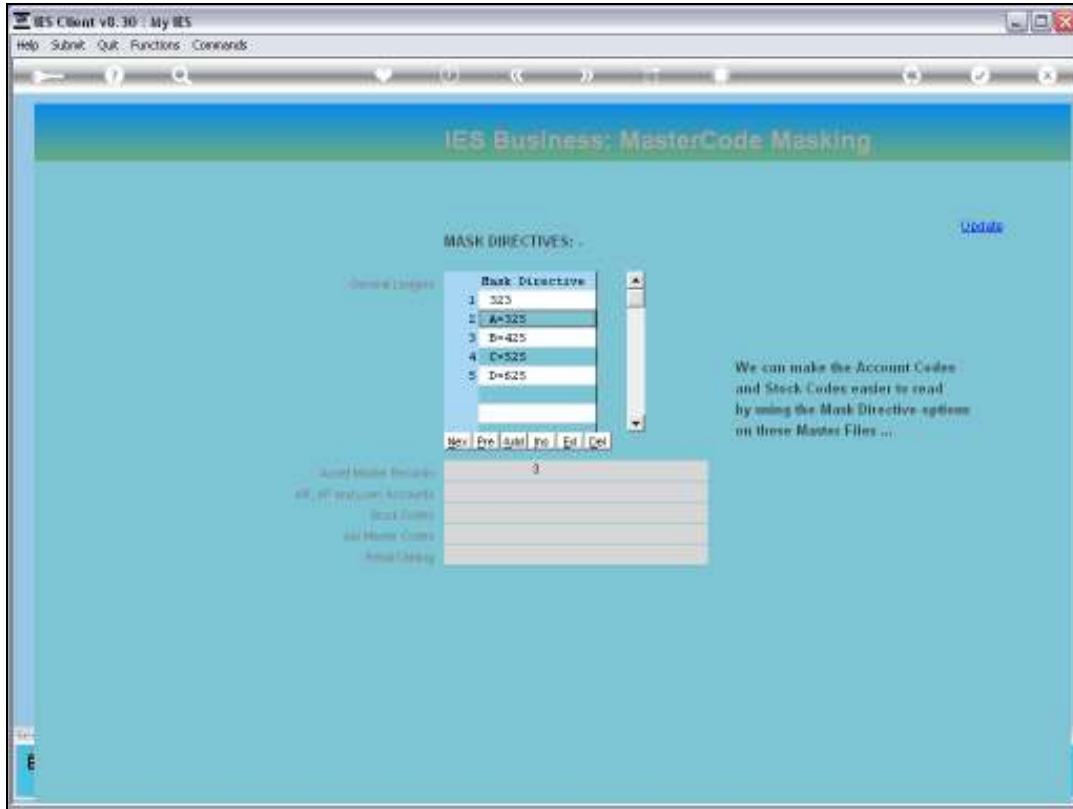
Slide notes:





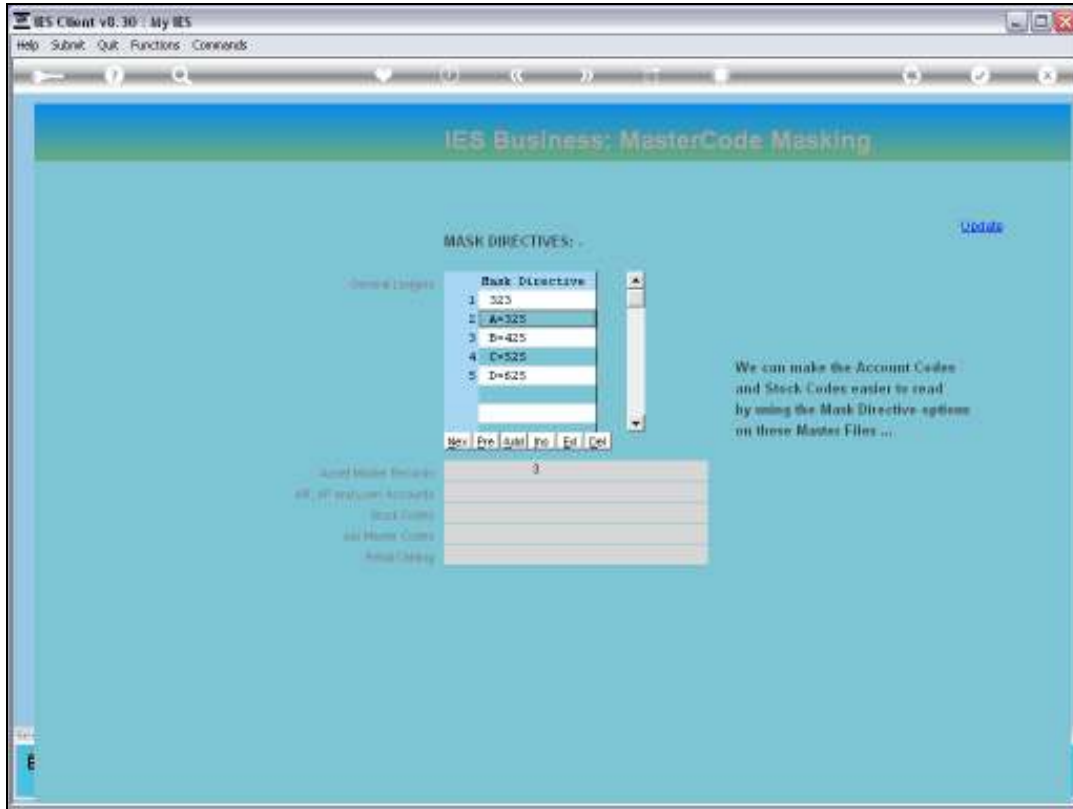
## Slide 9

Slide notes: What is it? It is an option to display Account Codes in a more readable format, without having to use extra characters in the Code itself. For the General Ledger, we can display a single masking code, or in the case of multiple Ledgers, we can set a code for each Ledger in the Multi Ledger.



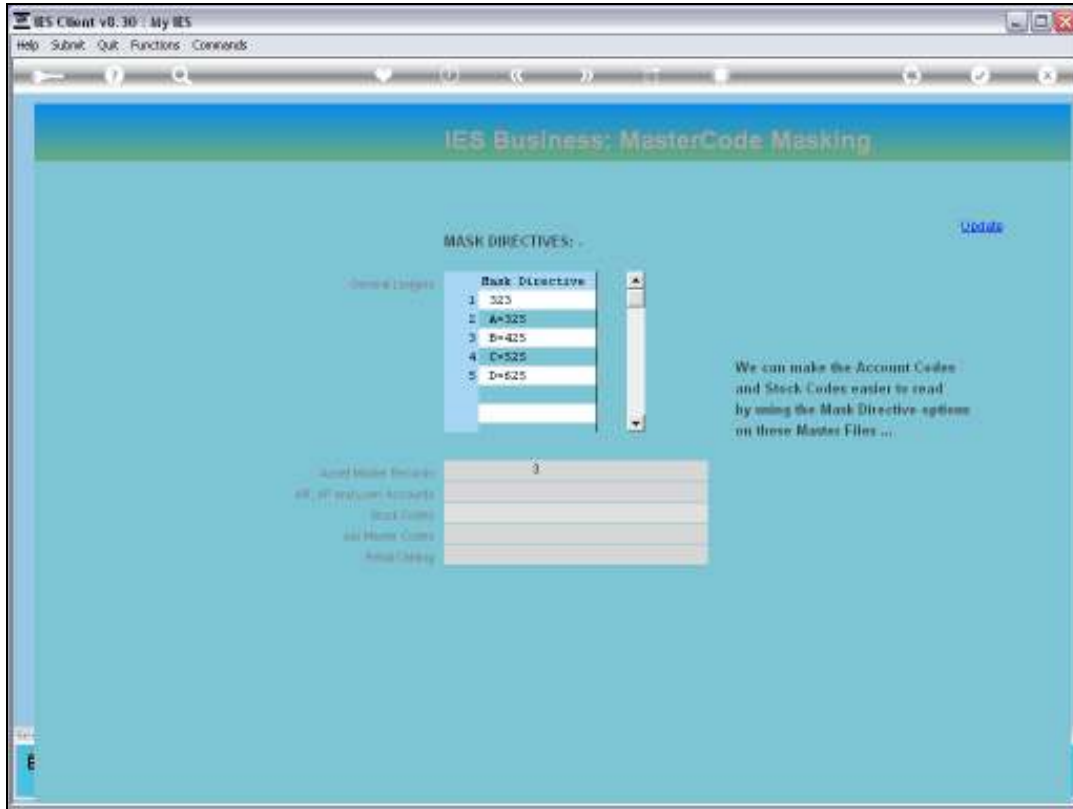
Slide 10

Slide notes:



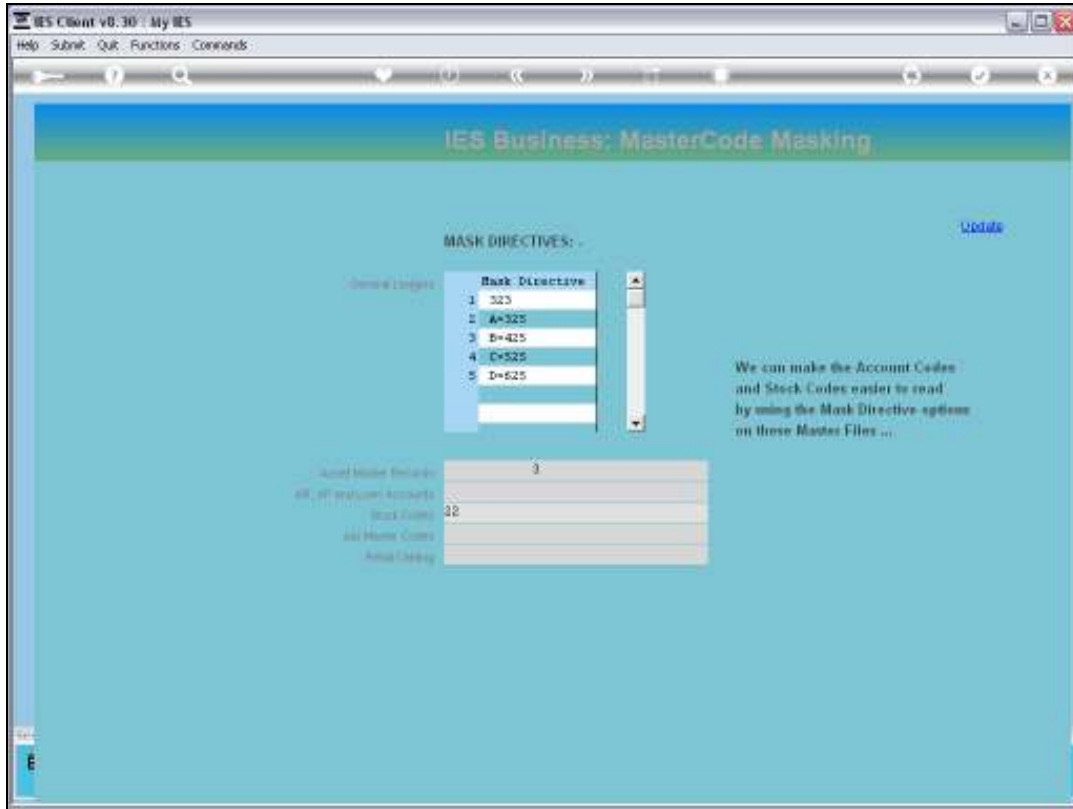
Slide 11

Slide notes: We can optionally specify a mask also for any of the Subsidiary Ledgers that are listed.



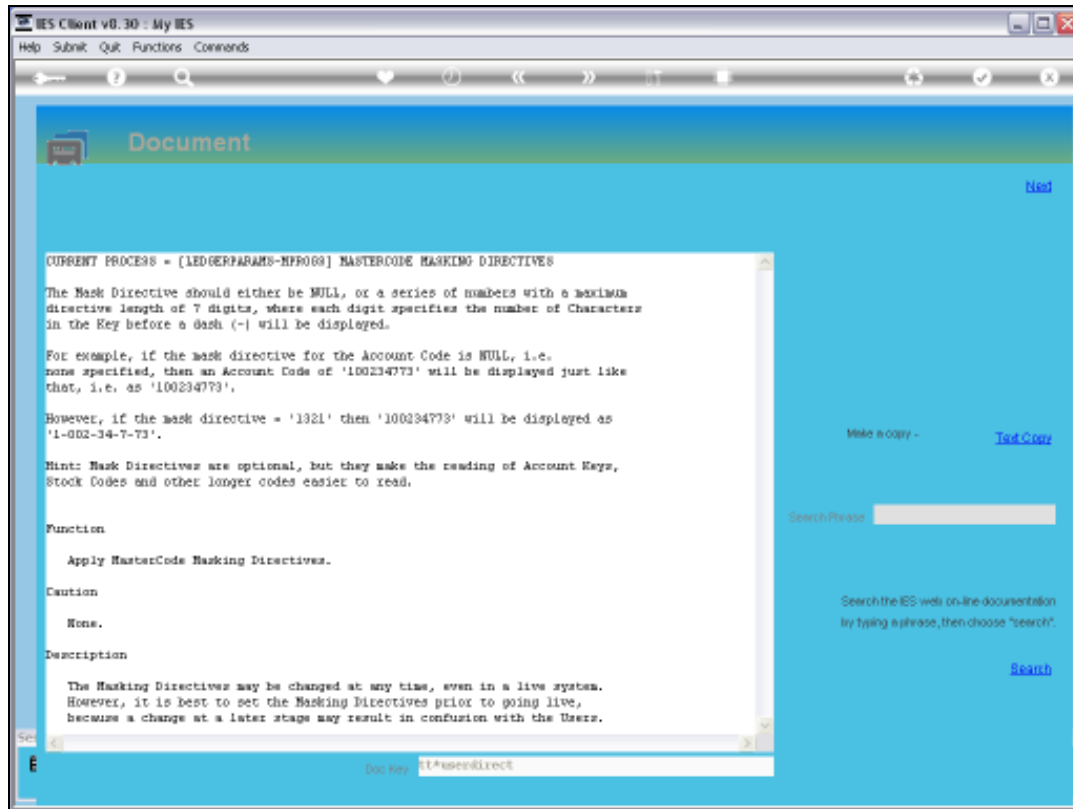
Slide 12

Slide notes:



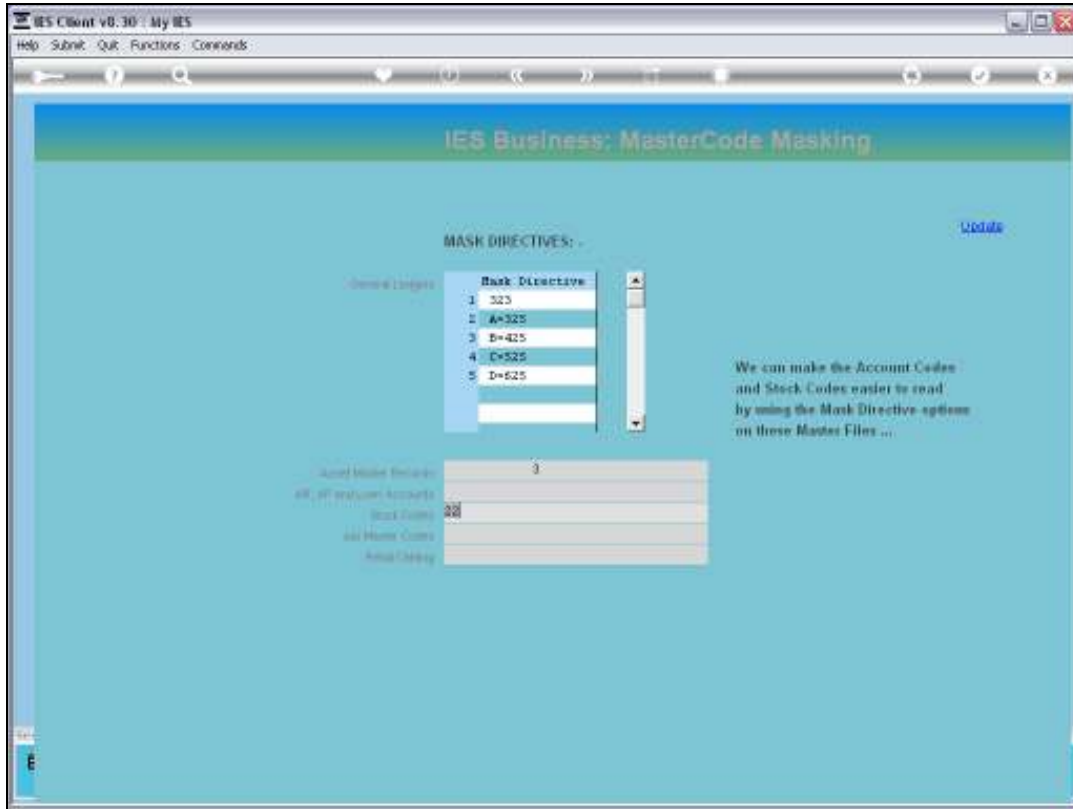
Slide 13

Slide notes:

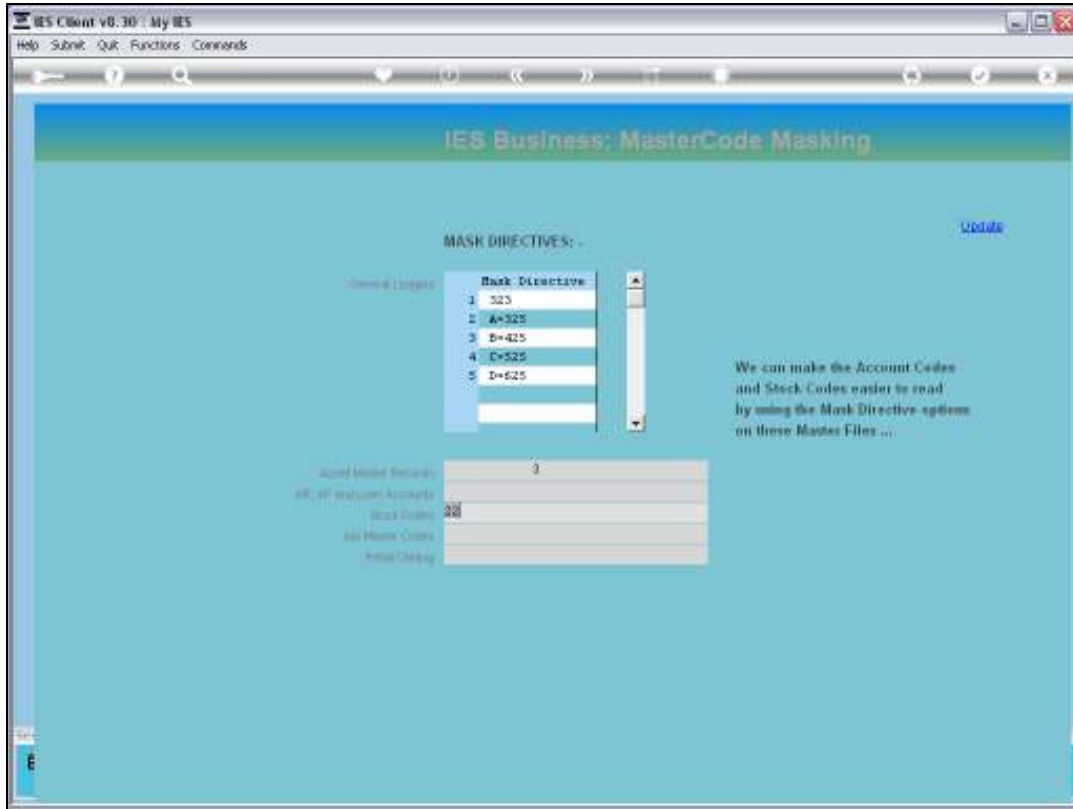


#### Slide 14

Slide notes: Masking works the same way for the Subsidiary Ledgers, except that there can only be a single mask code for a Subsidiary Ledger.



Slide 15  
Slide notes:



Slide 16

Slide notes: Account Code masking can be set or changed at any stage.





Slide 17

Slide notes:



Slide 18

Slide notes: