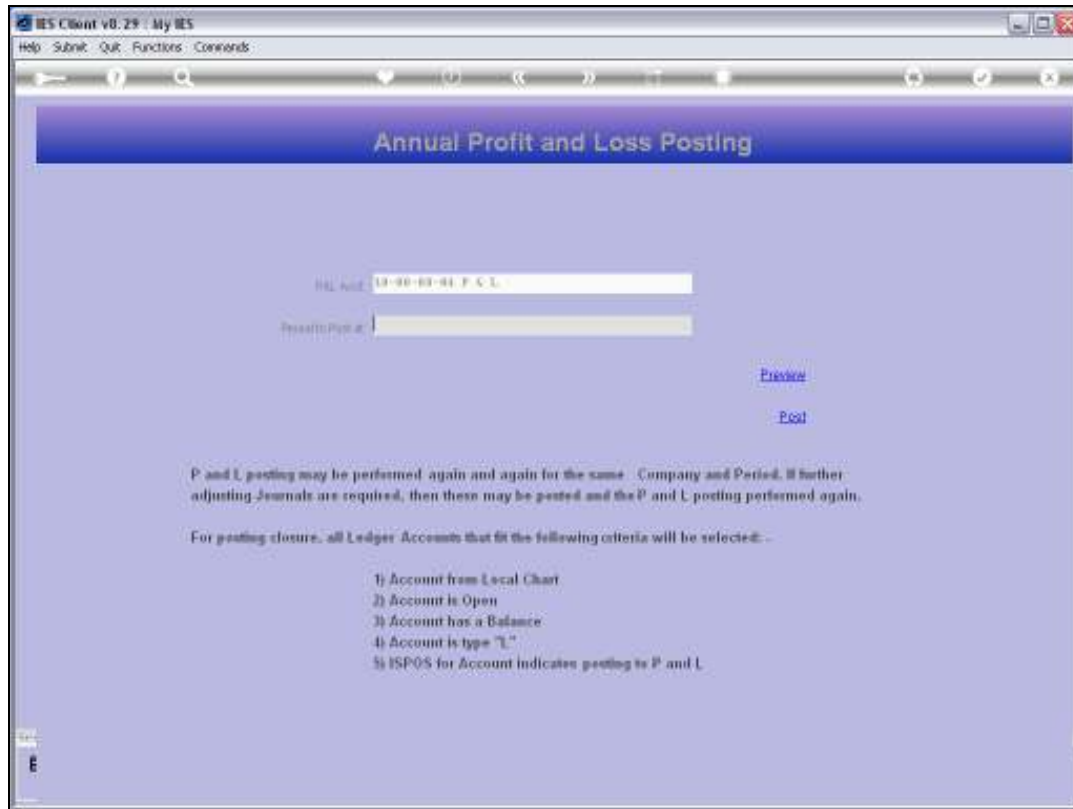




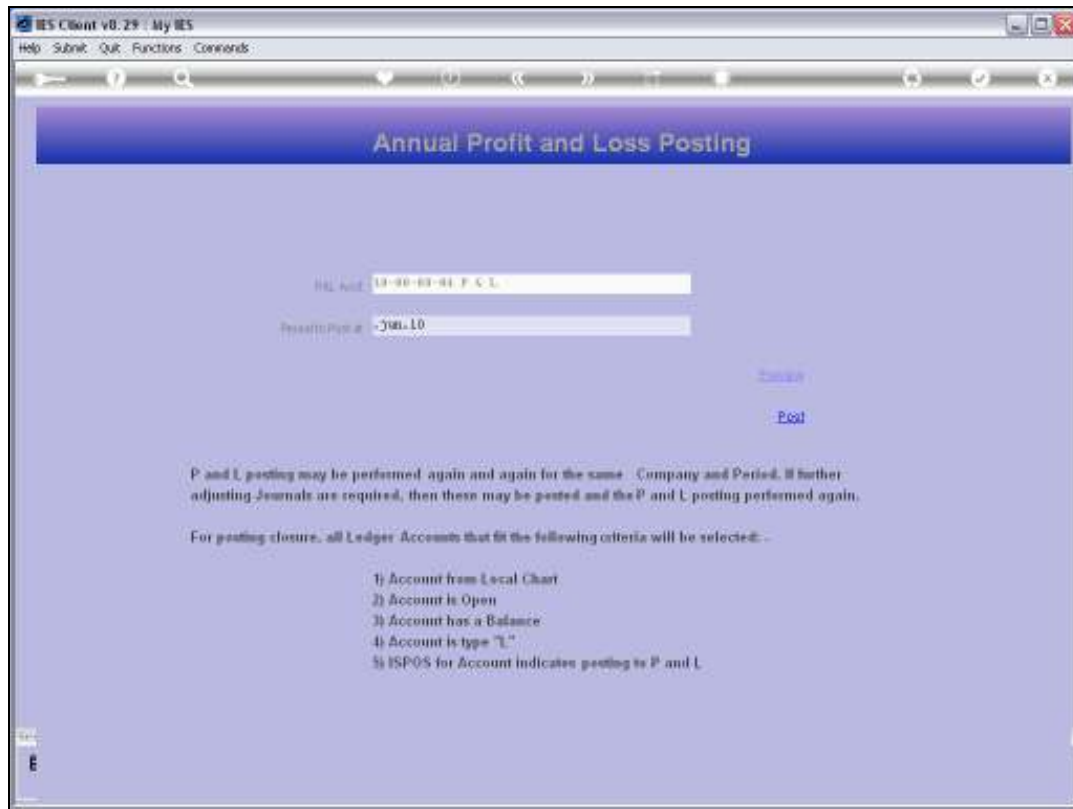
Slide 1

Slide notes: Annual Profit and Loss closing postings are performed from the 'Periodic' menu in Accounting Controls.



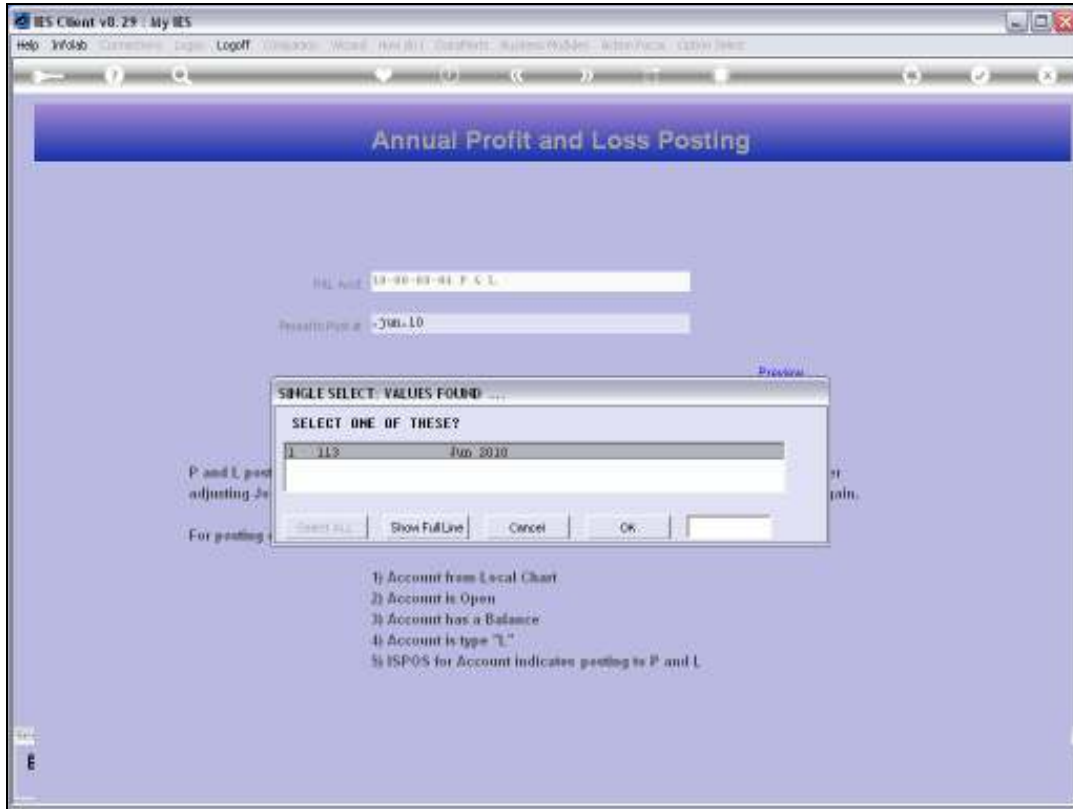
Slide 2

Slide notes: Profit and Loss posting is simply the closing out of any Balances found on Income and Expense Accounts, and we do this in the last Financial Period of the Year if we do not use 13th Periods, but mostly it is performed in the so-called 13th Period of the Year.

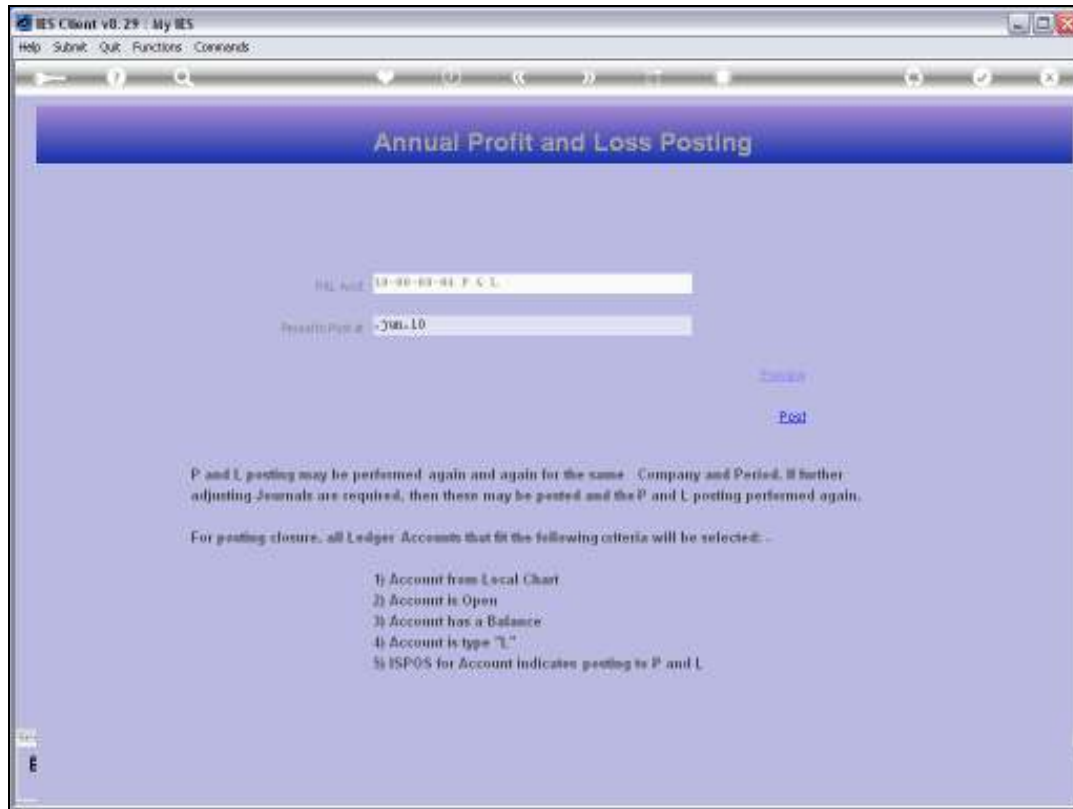


Slide 3

Slide notes: The P&L Account that the system will use is shown. We need to select the Period at which we want to perform closing postings.

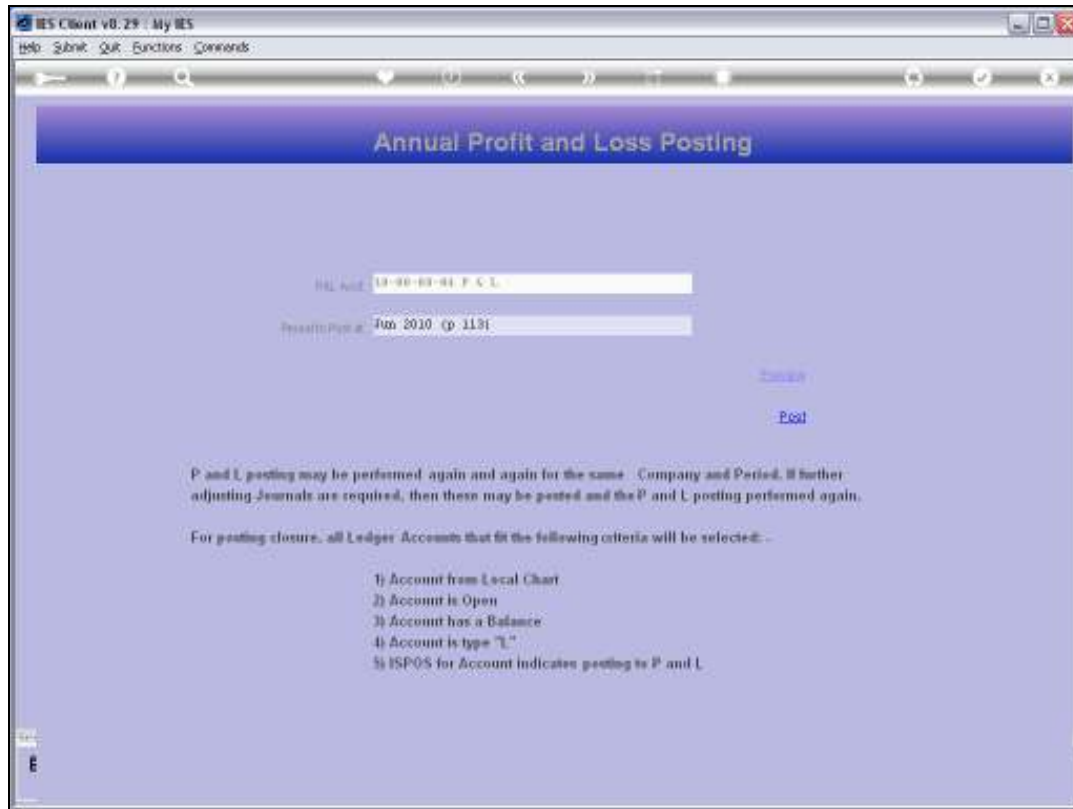


Slide 4
Slide notes:



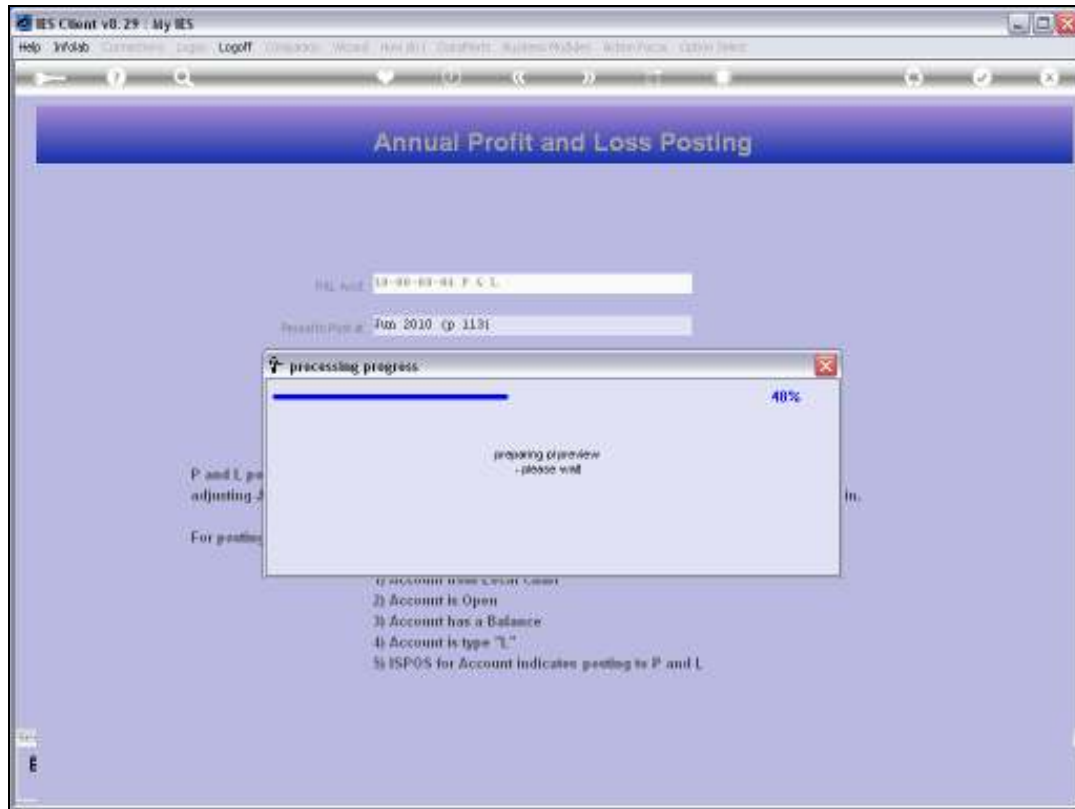
Slide 5

Slide notes:

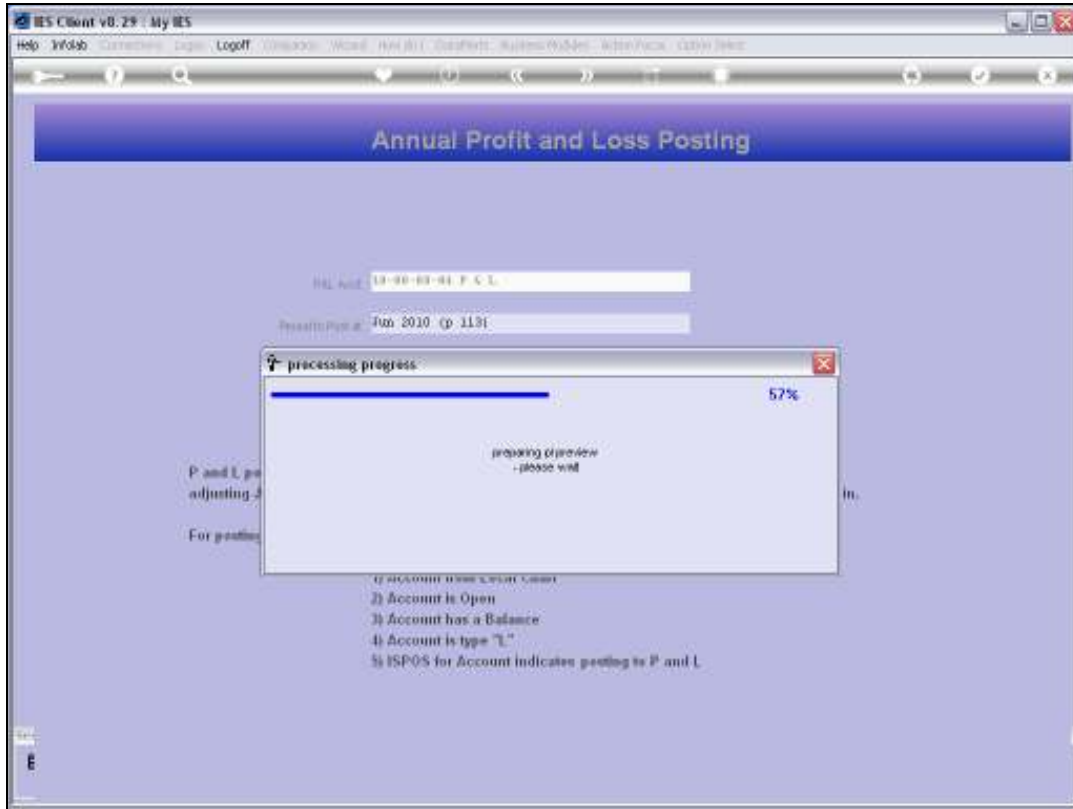


Slide 6

Slide notes: We cannot undo closing postings once we have performed it. Therefore, we have a 'Preview' option so that we can evaluate what will be posted BEFORE we actually perform the posting.



Slide 7
Slide notes:



Slide 8
Slide notes:

T1550930545.TXT - Notepad

File Edit Format View Help

Preview: period = 113 project = 0

preview shows financial impact only.

10000001	DISCOUNT ALLOWED	-670.68	: actual
10000002	DISCOUNT RECEIVED	-220.00	: actual
10000002a	DETAIL SUSPENSE	31,321.38	: actual
10000004G	Ins Provision	-483.98	: actual
10000004H	Ins Provision	-2,730.00	: actual
10000004H	Ins Provision	-390.00	: forex
10000005	IV SUSPENSE	-10.00	: actual
10000007	DIRECT ORDER PROFIT CENTER :	-214.52	: actual
10000010	Interest Received	411.09	: actual
10000011	FOREX GAIN : PRIVATE LEDGERS	-13,170.17	: actual
10000012	FOREX LOSS : PRIVATE LEDGERS	45,529.84	: actual
10000013	SALES FROM INVENTORY : PRIVA	-8,003.76	: actual
10000013B	SALES FROM INVENTORY : PRIVA	-283.20	: actual
10000014	PRODUCTION ADMIN : PRIVATE I	9,124.68	: actual
10000028	CURRENT TAX CHARGE IN P/L :	125.00	: actual
10000030	OVERDRAFT INTEREST : PRIVATE	-67.75	: actual
10000032	TAX DETENTION: HAULAGE	-133.00	: actual
10101001	INCOME # 2	-7,000.00	: actual
10101002	COST OF SALES	745,119.09	: actual
10101003	COS 2	25.16	: actual
10101006	DETAIL INCOME # 2	-2,862.96	: actual
10101010	HAULAGE INCOME	125.00	: actual
10101010B	LAYAWAY DEPOSITS	-245.00	: actual
10101010C	EXPENSES: GENERAL	1,549.04	: actual
10101010C	EXPENSES: GENERAL	223.44	: forex
10101010D	SALES ACCRUAL	43,667.09	: actual
10101010E	SALES ACCRUAL USD	6,631.45	: actual
10101010E	SALES ACCRUAL USD	947.35	: forex
10101010F	EXPENSES: GENERAL	-34.80	: actual
10101010F	EXPENSES: GENERAL	-5.00	: forex
10101010H	Disposal Cost Credit	-253.00	: actual
10101015	WITHHOLDING TAX 23	-4.00	: actual
10101016	WITHHOLDING TAX 54	-87.50	: actual
10101020	DIRECT SALES	-13,107.11	: actual
10101023	ASSET TRANSFER	-467,300.00	: actual
10101028	HEALTH & SAFETY : ACCOUNTS	-1,800.00	: actual
10101029	PL MAINT, STOCK	27.23	: actual
10101029	PL MAINT, SERVICES	1,365.00	: actual
10101032	SALES	-3,842.40	: actual
10101046	VEHICLES : ACCOUNTS	-10.00	: actual
10101050	Inc from Detail Sale	-87,396.11	: actual
10101050	Inc from Detail Sale	-12,571.23	: forex
10101050b	Inc from Detail Sale	-124,484.37	: actual
10101052	INCOME FROM CONCRETE SALES	18,659.11	: actual

Slide 9

Slide notes: The Preview Report will show each Account where a Local or Forex balance is found on an Income or Expense Account, and shows the balance that will be posted.

T1550930545.TXT - Notepad

File Edit Format View Help

p and l preview: period = 113 project = 0

preview shows financial impact only.

10000001	DISCOUNT ALLOWED	-670.68	: actual
10000002	DISCOUNT RECEIVED	-220.00	: actual
10000002a	DETAIL SUSPENSE	31,321.38	: actual
10000004G	Ins Provision	-483.98	: actual
10000004H	Ins Provision	-2,730.00	: actual
10000004H	Ins Provision	-390.00	: forex
10000005	IV SUSPENSE	-10.00	: actual
10000007	DIRECT ORDER PROFIT CENTER :	-214.52	: actual
10000010	Interest Received	411.09	: actual
10000011	FOREX GAIN : PRIVATE LEDGERS	-13,170.17	: actual
10000012	FOREX LOSS : PRIVATE LEDGERS	45,529.84	: actual
10000013	SALES FROM INVENTORY : PRIVA	-8,003.76	: actual
10000013B	SALES FROM INVENTORY : PRIVA	-283.20	: actual
10000014	PRODUCTION ADMIN : PRIVATE I	9,124.68	: actual
10000028	CURRENT TAX CHARGE IM P/L :	125.00	: actual
10000030	OVERDRAFT INTEREST : PRIVATE	-67.75	: actual
10000032	TAX DETENTION: HAULAGE	-133.00	: actual
10101001	INCOME # 2	-7,000.00	: actual
10101002	COST OF SALES	745,119.09	: actual
10101003	COS 2	25.16	: actual
10101006	DETAIL INCOME # 2	-2,862.96	: actual
10101010	HAULAGE INCOME	125.00	: actual
10101010B	LAYAWAY DEPOSITS	-245.00	: actual
10101010C	EXPENSES: GENERAL	1,549.04	: actual
10101010C	EXPENSES: GENERAL	223.44	: forex
10101010D	SALES ACCRUAL	43,667.09	: actual
10101010E	SALES ACCRUAL USD	6,631.45	: actual
10101010E	SALES ACCRUAL USD	947.35	: forex
10101010F	EXPENSES: GENERAL	-34.80	: actual
10101010F	EXPENSES: GENERAL	-5.00	: forex
10101010H	Disposal Cost Credit	-253.00	: actual
10101015	WITHHOLDING TAX 23	-4.00	: actual
10101016	WITHHOLDING TAX 54	-87.50	: actual
10101020	DIRECT SALES	-13,107.11	: actual
10101023	ASSET TRANSFER	-467,300.00	: actual
10101029	HEALTH & SAFETY : ACCOUNTS	-1,800.00	: actual
10101029I	PL MAINT, STOCK	27.23	: actual
10101029J	PL MAINT, SERVICES	1,365.00	: actual
10101032	SALES	-3,842.40	: actual
10101046	VEHICLES : ACCOUNTS	-10.00	: actual
10101050	Inc from Detail Sale	-87,936.11	: actual
10101050	Inc from Detail Sale	-12,571.23	: forex
10101050B	Inc from Detail Sale	-124,484.37	: actual
10101052	INCOME FROM CONCRETE SALES	18,659.11	: actual

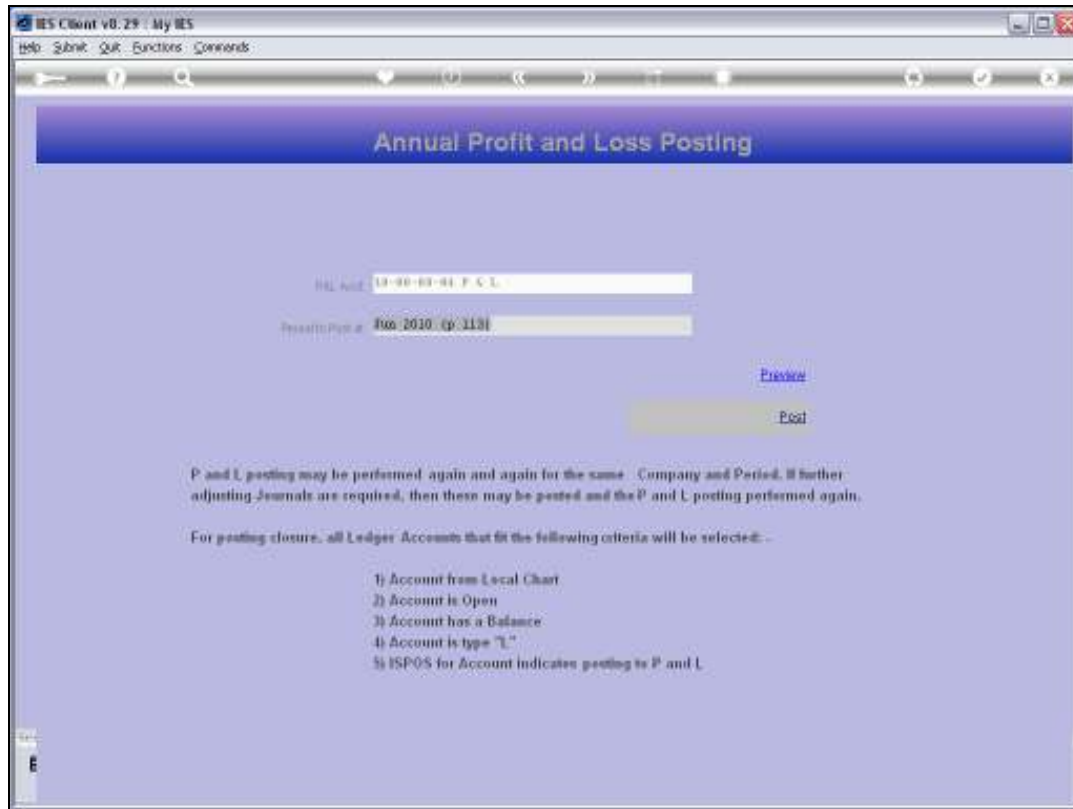
Slide 10

Slide notes:



Slide 11

Slide notes: Only if we are quite satisfied with the Accounts and Balances listed should we proceed to perform the actual POST option. Any unwanted postings can only be corrected by Journal afterwards. So, if necessary, we can quit the screen, and go and correct anything that needs to be corrected and then return here to Preview again.



Slide 12

Slide notes: Although we cannot undo postings, we can repeat as many times as we like. After using POST, we may perform further adjustments in the Accounts, which will result in new balances on P&L Accounts, and then we can use Preview and Post again and again, as many times as required until we are satisfied with the Year End Accounts.