



Slide 1

Slide notes: Gain / Loss PreView Reports are performed from the Currencies Management menu.

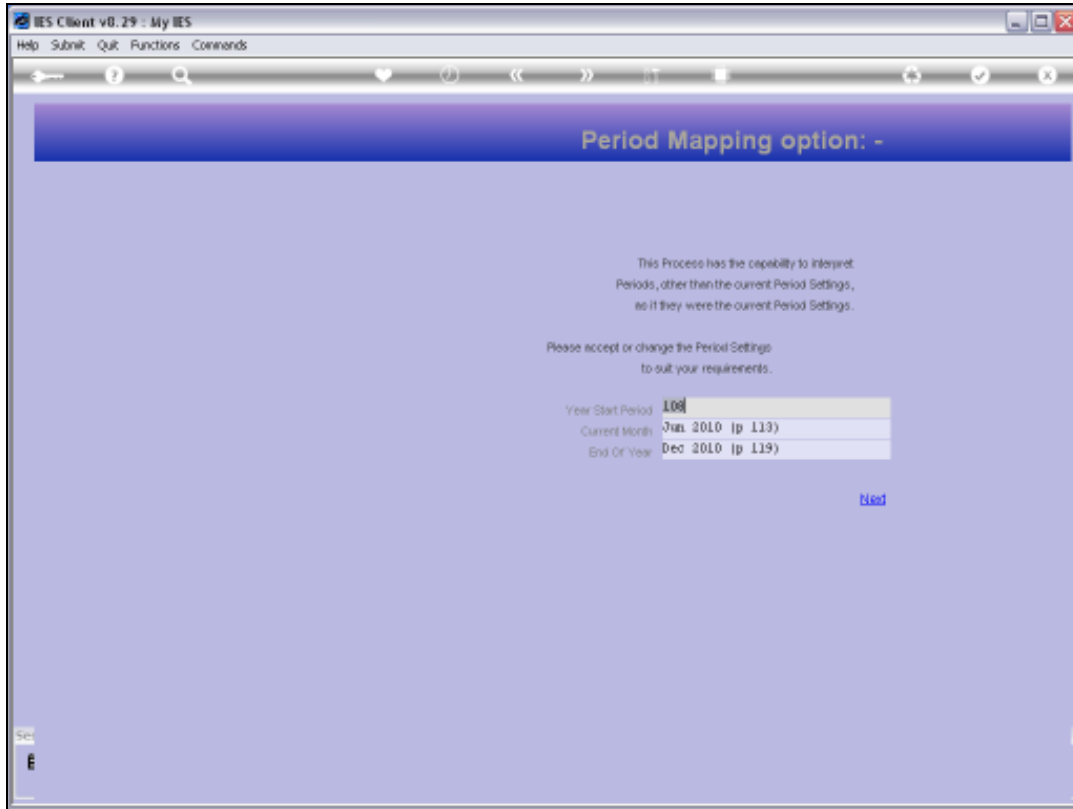


Slide 2
Slide notes:



Slide 3

Slide notes: The General Ledger version of the Gain / Loss Preview will report on Forex Accounts in the Ledger that are Balance Sheet Accounts.

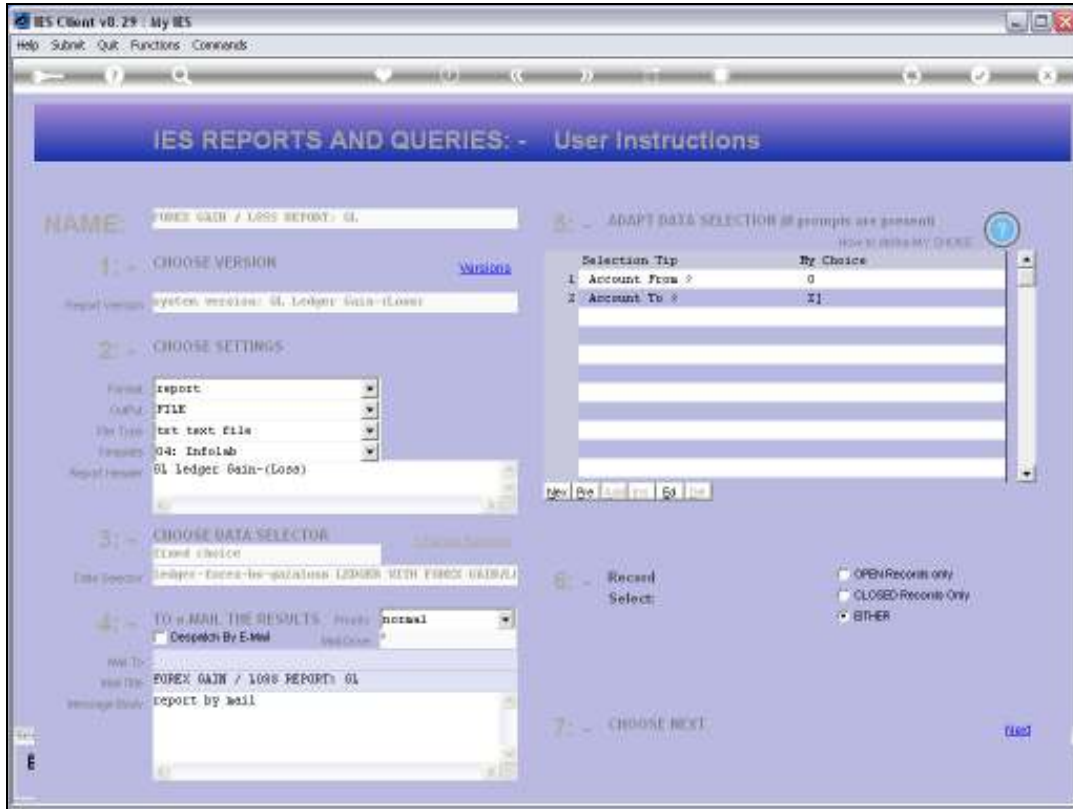


Slide 4

Slide notes: Dynamic Period Mapping is available so that we may preview for a selected Period Range.



Slide 5
Slide notes:



Slide 6
Slide notes:

Q1551448171A.TXT - Notepad

File Edit Format View Help

Omney Hoops Inc.

13:22:51 Z2 JUN 2010 page 1

GL Ledger Gain/Loss- Preview Jan 2010 - Jun 2010

Key	Description	Forex...	FX Rate	...Actual YTD	Forex Act Ytd	..Gain/Loss-
baseacctvar	VAT / GST CONTROL : VARIABLE TAX :	\$	7.8	-219.99	0.00	219.99
	PRIVATE LEDGERS					
0003309	COMPUTER (USD)	\$	7.8	0.00	0.00	0.00
0002229	CHESET (USD)	\$	7.8	0.00	0.00	0.00
2105000	MYTAMG INTERCOMPANY	\$	7.8	0.00	0.00	0.00
2102104	DPH 23 (USD)	\$	7.8	8.60	0.00	-8.60
1070	CASH RECEIVED	\$	7.8	1,400.00	200.00	160.00
10000093	CUSTOMER SALES CASH RECEIPTS (01 :	\$	7.8	-42,886.53	0.00	42,886.53
	PRIVATE LEDGERS					
10000076tx	CUSTOMER SALES CASH RECEIPTS (11 :	\$	7.8	17,500.00	2,500.00	2,000.00
	PRIVATE LEDGERS					
10000015e	BANK : PRIVATE LEDGERS	\$	7.8	-155,376.06	-22,205.40	-17,826.06
	**					
				-179,573.96	-19,505.40	27,431.86
xxx	PHILIPPINES	PHP	33	1,452.97	10,705.00	-1,128.58
	**					
		PHP		1,452.97	10,705.00	-1,128.58
				-178,121.01	-8,800.40	26,303.28

10 record(s) listed

Slide 7

Slide notes: The Gain / Loss Preview is called a Preview because it does not list Gains and Losses already incurred, but rather it lists Gains and Losses that will be recorded if we use the Auto Gain / Loss function at the current Exchange Rates as shown. In other words, the current Local Currency Balances for the listed Accounts are evaluated against the Forex Balances on these Accounts, at the Exchange Rates currently listed on the Currency Register, and then indicate potential Gains and Losses if we should perform the re-valuing of these Accounts with the Auto Gain / Loss Adjuster.