



Slide 1

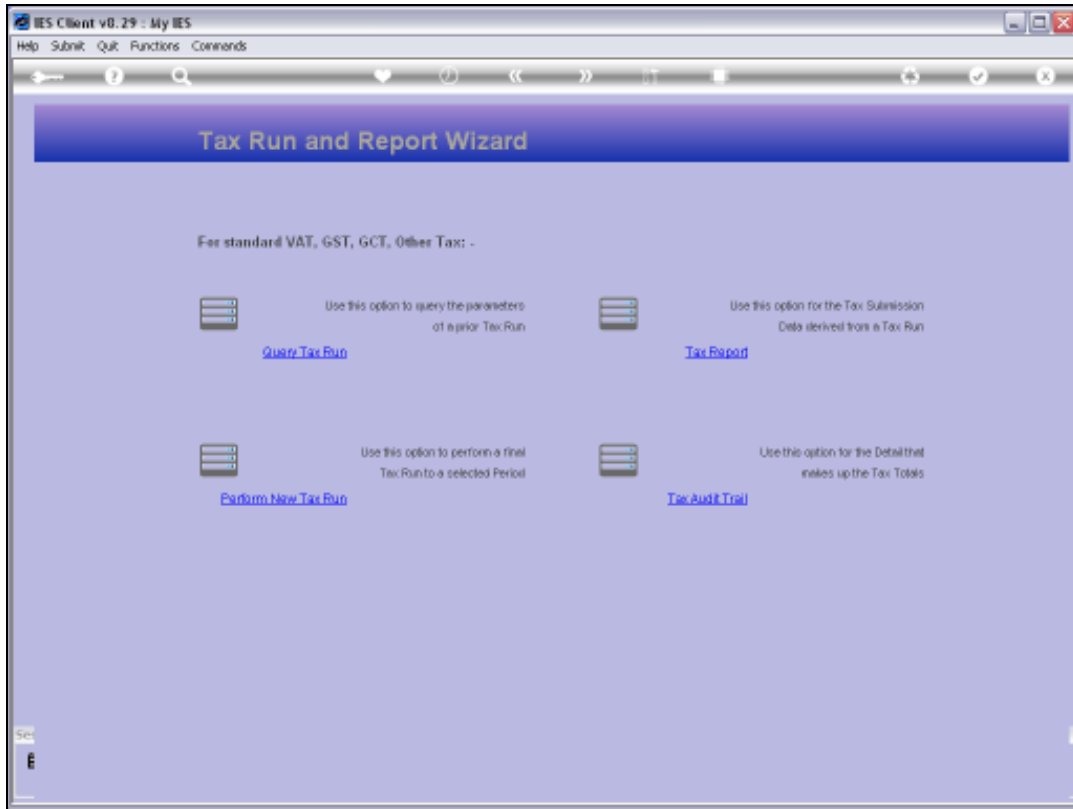
Slide notes: From the Tax Management menu, we gain entry to the Tax Report Wizard.



Slide 2
Slide notes:



Slide 3
Slide notes:



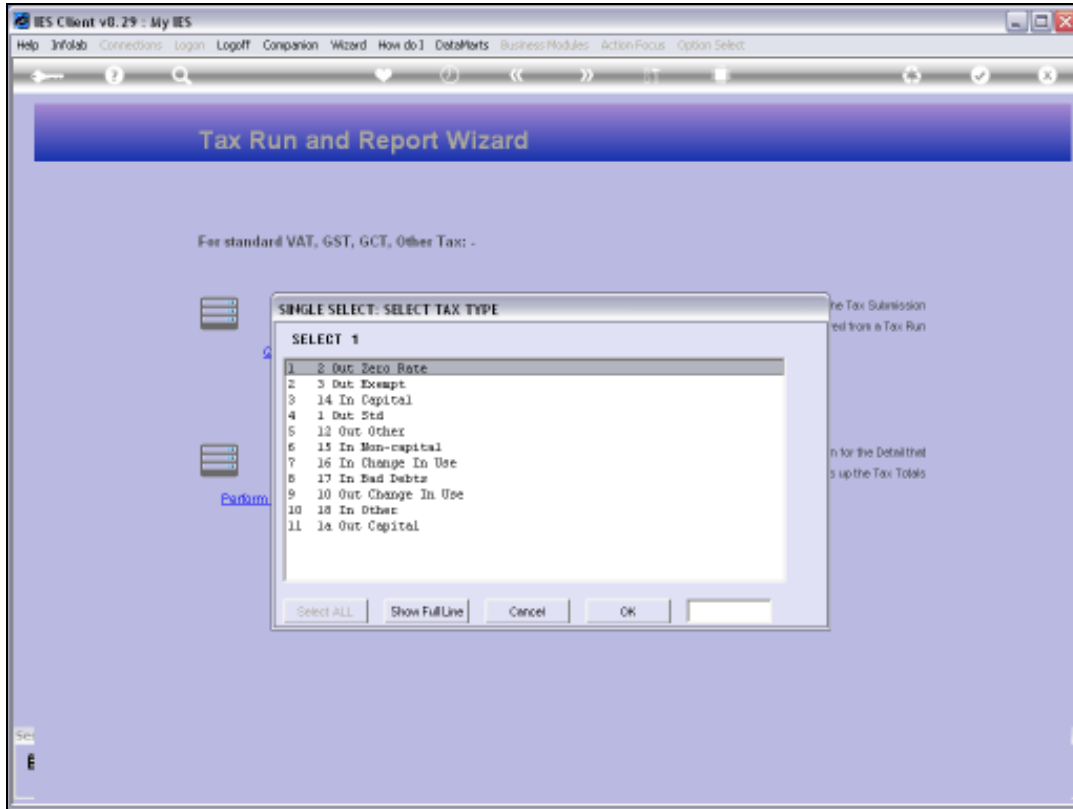
Slide 4

Slide notes: The Tax Report wizard provides an option for Tax Audit Trails.



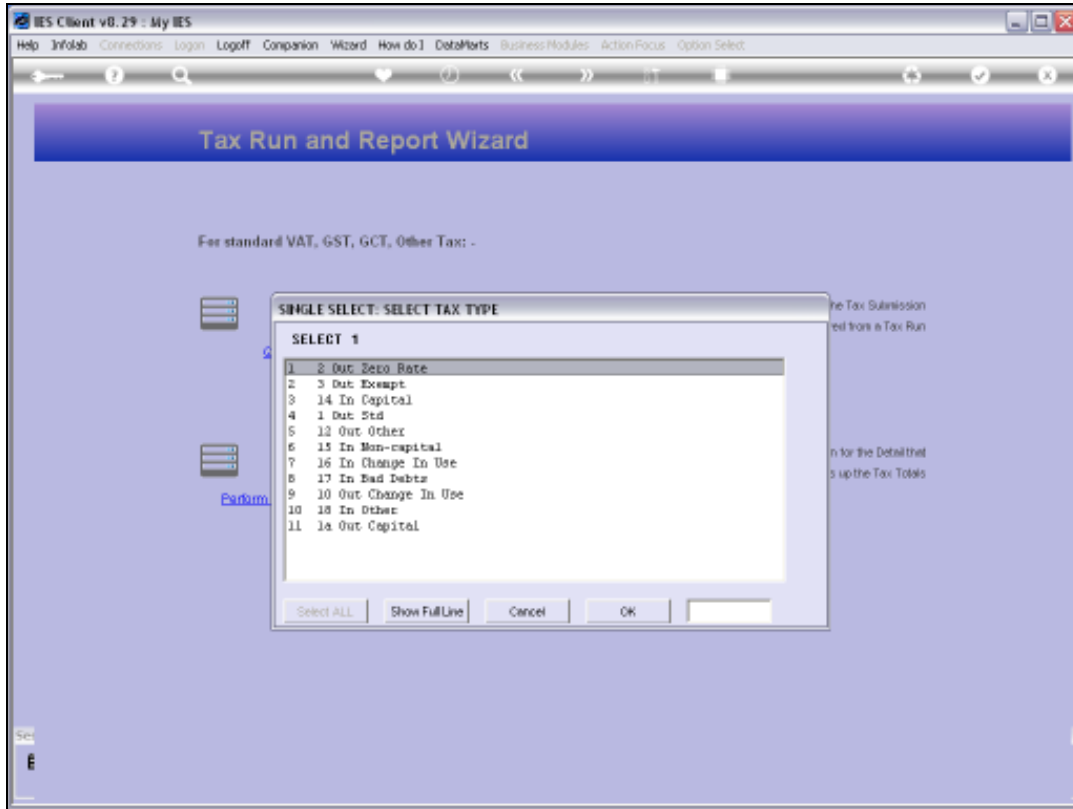
Slide 5

Slide notes: The Tax Audit options may be used internally, but otherwise they are only used during a Tax Inspection or Tax Audit, in order to verify the Tax Returns.

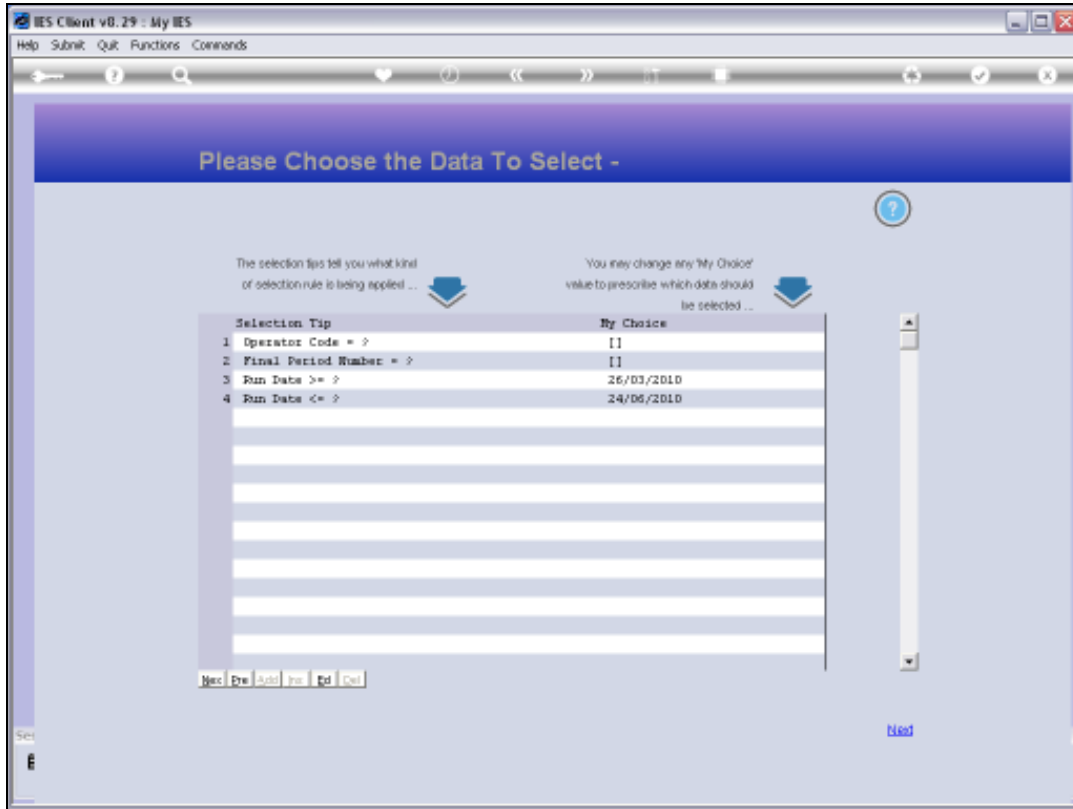


Slide 6

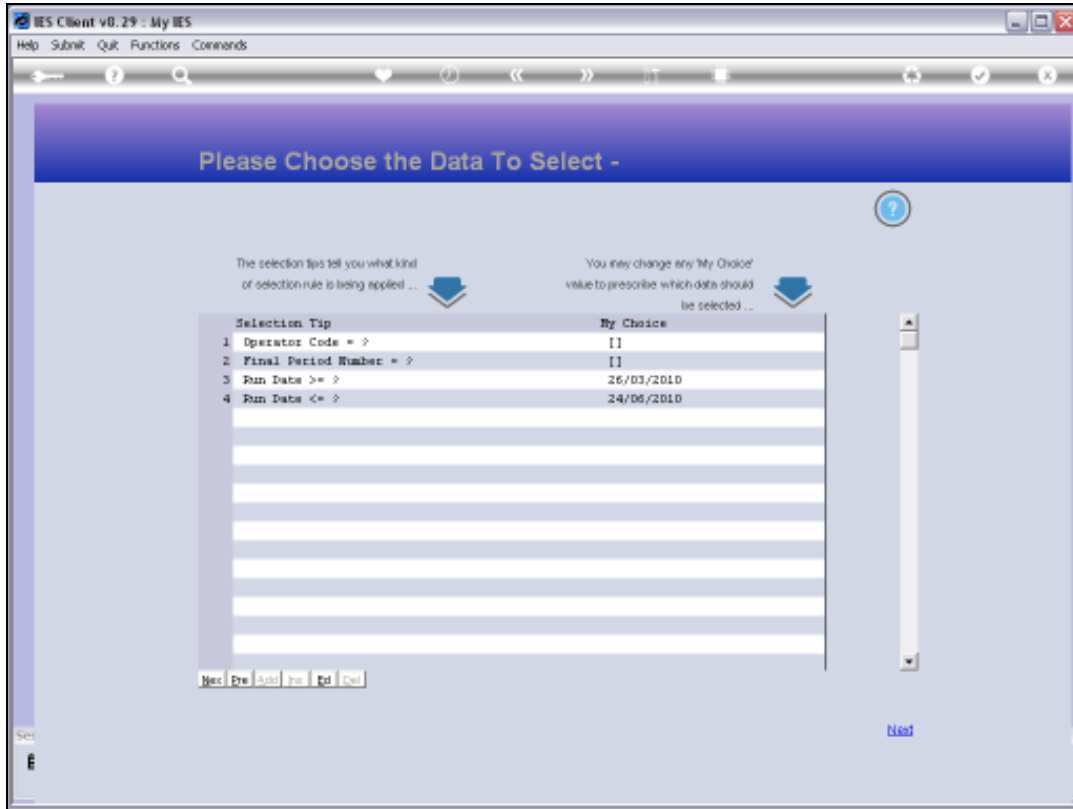
Slide notes: We start with an example of a Run Audit, which offers selection of any of our Transactional Tax Types, after which we select the Tax Run, and then we get a Report of all the detail that make up that Tax Type on the selected Tax Run or Return.



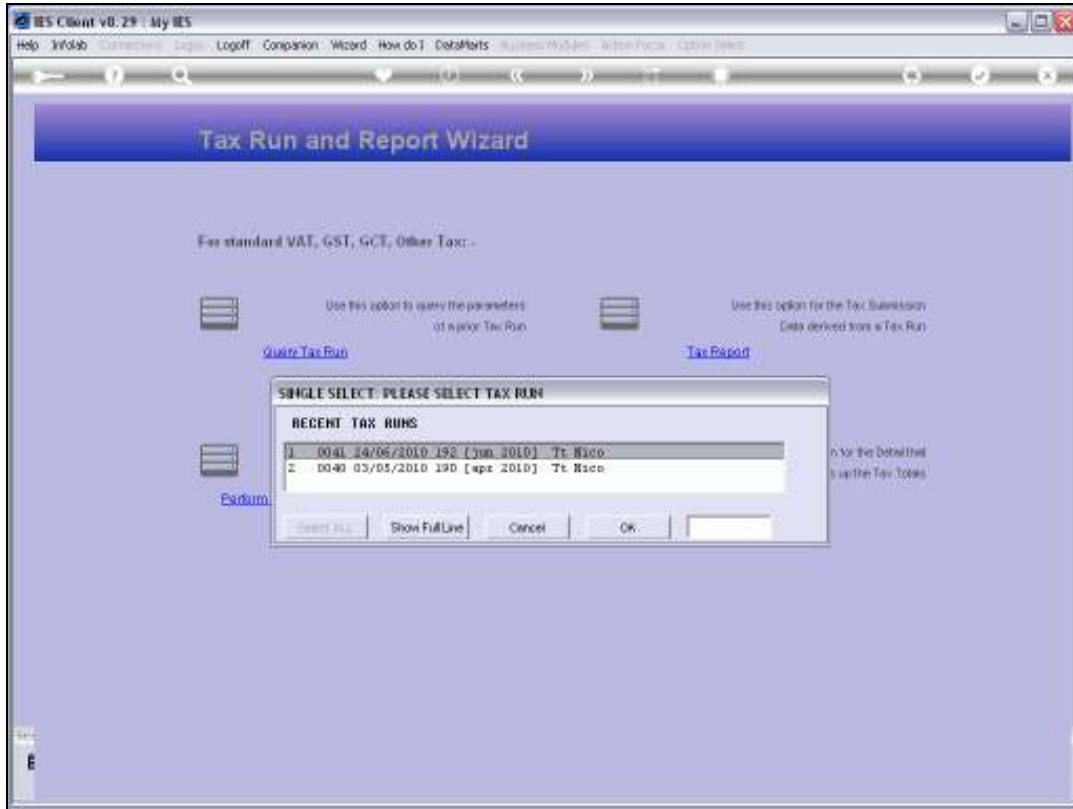
Slide 7
Slide notes:



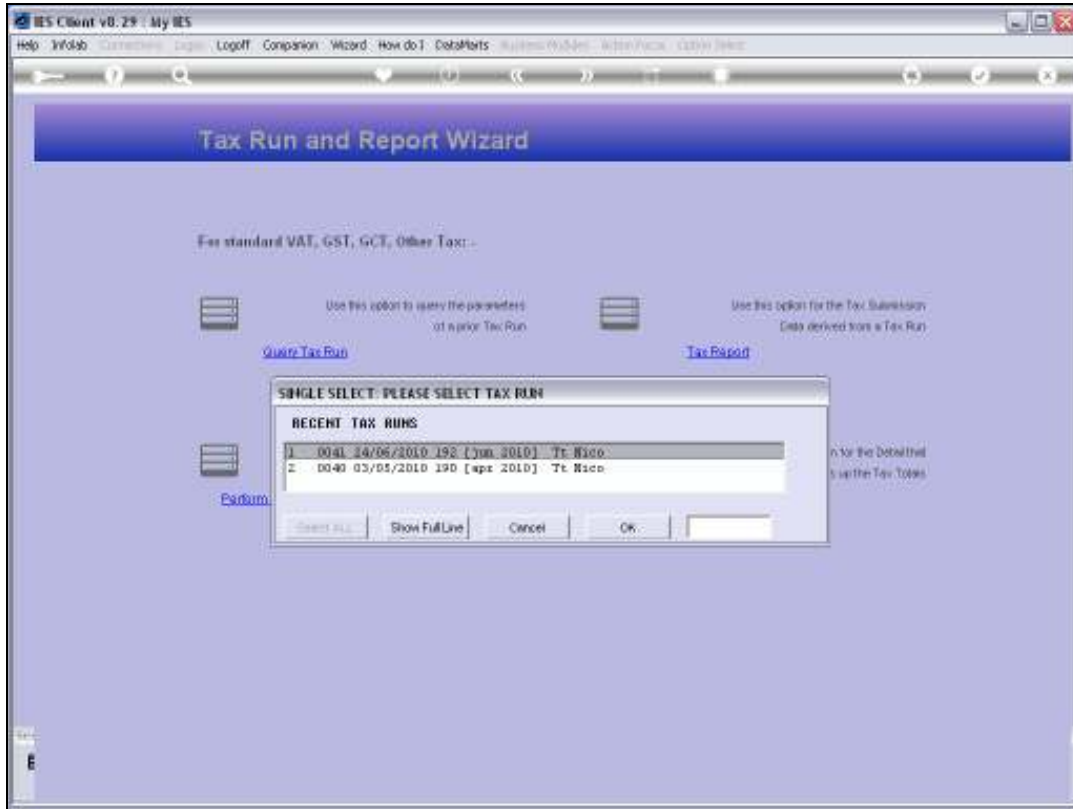
Slide 8
Slide notes:



Slide 9
Slide notes:



Slide 10
Slide notes:



Slide 11
Slide notes:

Q1551671643A.TXT - Notepad

File Edit Format View Help

InfoTab (F7) Lcd

19:54:02 24 JUN 2010 page 1

Tax Audit Trail for Tax Type = 15 Run # = 0041

Key.....	Description.....	Document #.....	Tax Amount.....	Turnover.....	Period.....
1550444766A	Telkom	10-217	127.95	1,041.04	Jun 2010 jp 192
1549519122A	Computer Maint	10-204	11.20	91.20	Jun 2010 jp 192
1549519121A	Computer Maint	10-202	167.20	1,262.20	Jun 2010 jp 192
			-----	-----	**
			206.45	2,495.24	Jun 2010 jp 192
1549519724A	Service Fee	10-199	24.01	195.51	May 2010 jp 191
1549519720A	Service Fee	10-198	4.42	36.00	May 2010 jp 191
1549519694A	Mcn	10-197	12.26	108.00	May 2010 jp 191
1546668281A	Telkom	10-180	127.51	1,119.72	May 2010 jp 191
1546667922A	Service Fee	10-178	4.42	36.00	May 2010 jp 191
1546667915A	Service Fee	10-177	27.97	209.19	May 2010 jp 191
1546667911A	Mcn	10-176	21.15	172.24	May 2010 jp 191
			-----	-----	**
			242.74	1,976.65	May 2010 jp 191
			-----	-----	**
			549.19	4,471.89	

10 record(s) listed

Slide 12
 Slide notes:

Q1551671643A.TXT - Notepad

File Edit Format View Help

InfoTab (F7) Lcd

19:54:02 24 JUN 2010 page 1

Tax Audit Trail for Tax Type = 15 Run # = 0041

Key.....	Description.....	Document #.....	Tax Amount.....	Turnover.....	Period.....
155044066A	Telkom	10-217	127.95	1,041.04	Jun 2010 jp 192
1549519123A	Computer Maint	10-204	11.20	91.20	Jun 2010 jp 192
1549519121A	Computer Maint	10-202	167.20	1,262.20	Jun 2010 jp 192
			-----	-----	**
			206.45	2,495.24	Jun 2010 jp 192
1549519724A	Service Fee	10-199	24.01	195.51	May 2010 jp 191
1549519720A	Service Fee	10-198	4.42	36.00	May 2010 jp 191
1549519694A	Mcn	10-197	12.26	108.00	May 2010 jp 191
1546669226A	Telkom	10-180	127.51	1,119.72	May 2010 jp 191
1546667922A	Service Fee	10-178	4.42	36.00	May 2010 jp 191
1546667915A	Service Fee	10-177	27.97	209.19	May 2010 jp 191
154666791A	Mcn	10-176	21.15	172.24	May 2010 jp 191
			-----	-----	**
			242.74	1,976.65	May 2010 jp 191
			-----	-----	
			549.19	4,471.89	

10 record(s) listed

Slide 13

Slide notes: This Tax Audit Report includes detail that adds up to the totals as shown for Tax Type 15 on Tax Run 41. We should be able to check this on a Tax Query of Tax Run 41.

Q1551671643A.TXT - Notepad

File Edit Format View Help

InfoTab (F7) Lcd

19:54:02 24 JUN 2010 page 1

Tax Audit Trail for Tax Type = 15 Run # = 0041

Key.....	Description.....	Document #.....	Tax Amount.....	Turnover.....	Period.....
1550444766A	Telkom	10-217	127.95	1,041.04	Jun 2010 jp 192
1549519122A	Computer Maint	10-204	11.20	91.20	Jun 2010 jp 192
1549519121A	Computer Maint	10-202	167.20	1,262.20	Jun 2010 jp 192
			-----	-----	**
			206.45	2,495.24	Jun 2010 jp 192
1549519724A	Service Fee	10-199	24.01	195.51	May 2010 jp 191
1549519720A	Service Fee	10-198	4.42	36.00	May 2010 jp 191
1549519694A	Mcn	10-197	12.26	108.00	May 2010 jp 191
1546668261A	Telkom	10-180	127.51	1,119.72	May 2010 jp 191
1546667922A	Service Fee	10-178	4.42	36.00	May 2010 jp 191
1546667915A	Service Fee	10-177	27.97	209.19	May 2010 jp 191
154666791A	Mcn	10-176	21.15	172.24	May 2010 jp 191
			-----	-----	**
			242.74	1,976.65	May 2010 jp 191
			-----	-----	**
			549.19	4,471.89	

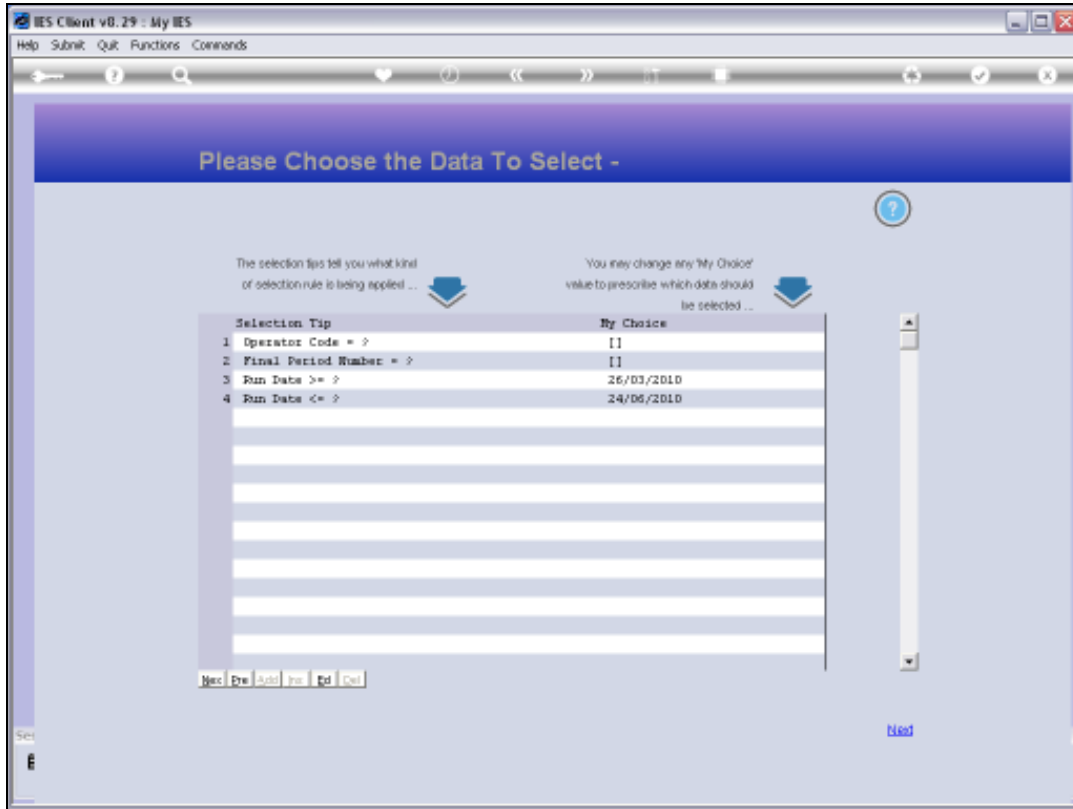
10 record(s) listed

Slide 14
 Slide notes:

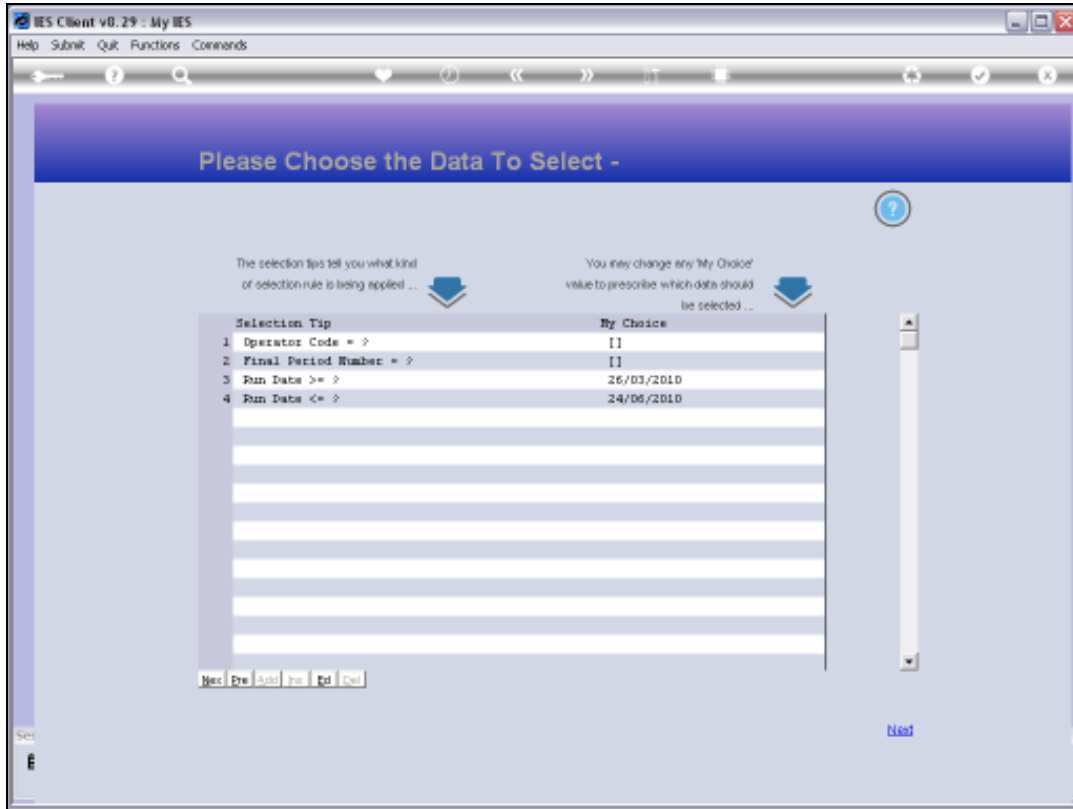


Slide 15

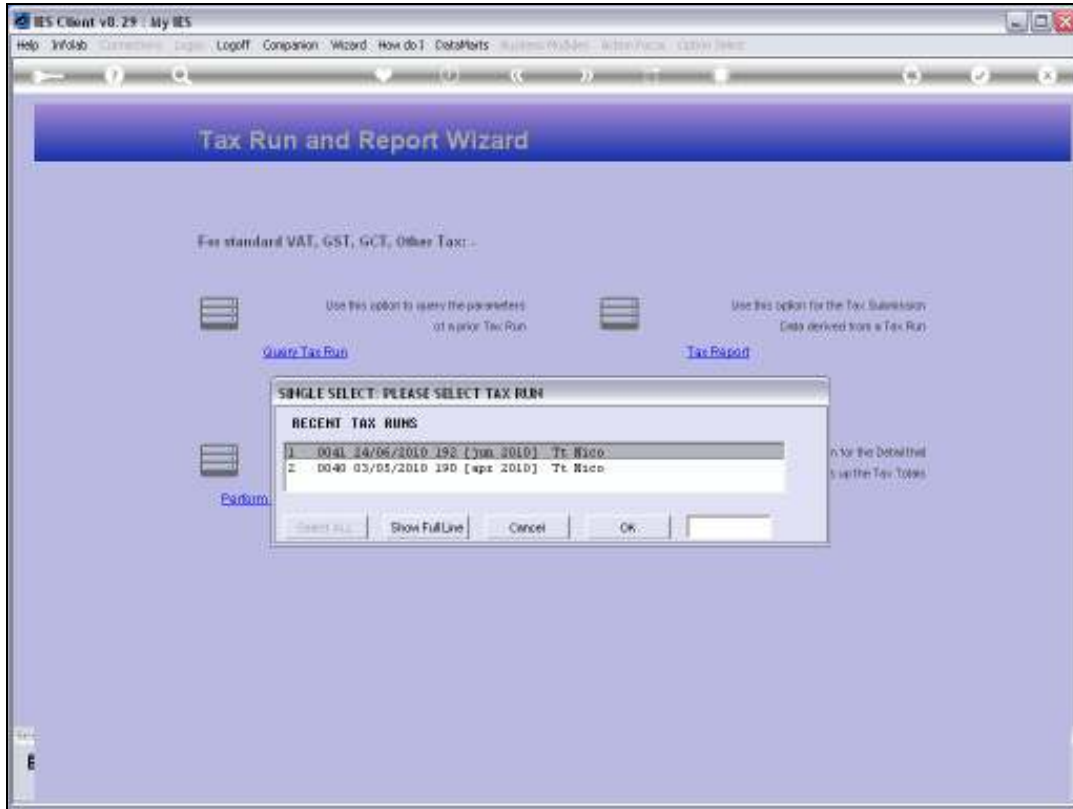
Slide notes:



Slide 16
Slide notes:

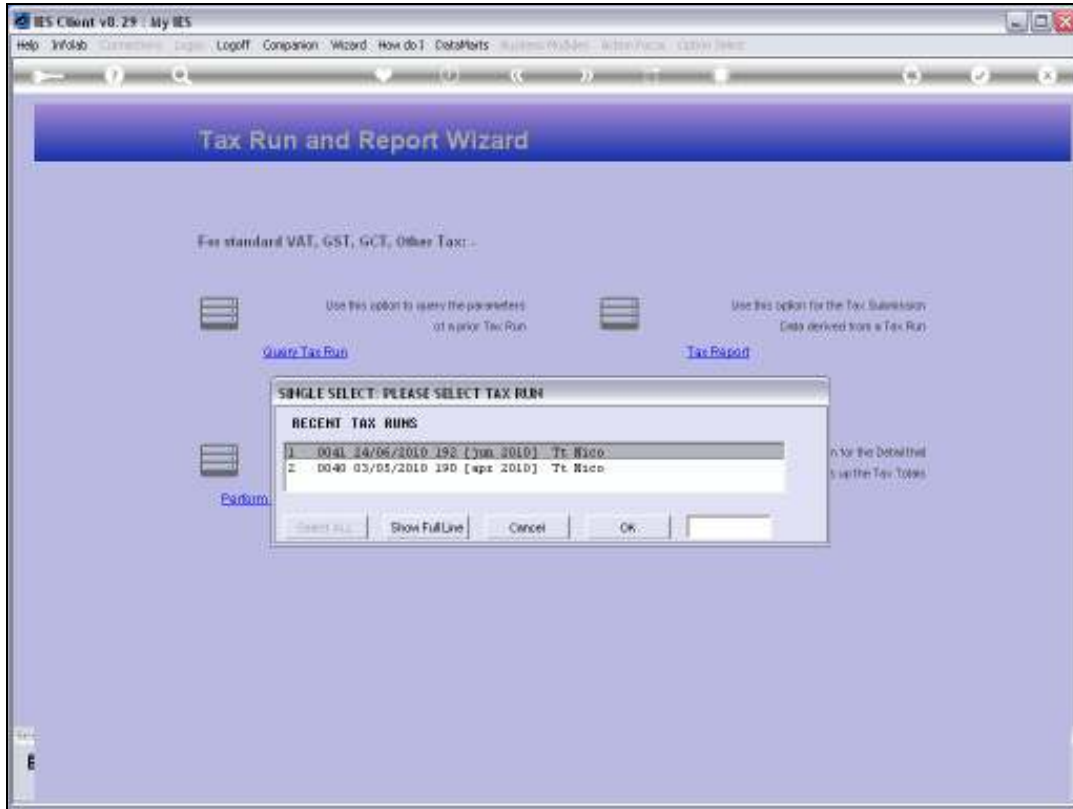


Slide 17
Slide notes:



Slide 18

Slide notes:



Slide 19
Slide notes:

IES Client v8.29 : My IES

Help Submit Quit Functions Commands

Query Tax Run

Tax Run Number: 0911
Date Performed: 24/06/2010
Performed By: RLCO
Up to Period: Jun 2010 (p. 192)

Tax Account	Tax Amount	Volume Processed	Tax Type
1 vat14 VAT	0.00	0.00	14 IN Capital
2 vat15 VAT	549.19	4,471.09	15 IN Non-Capital
3 vat16 VAT	0.00	0.00	16 IN Change in Use
4 vat17 VAT	0.00	0.00	17 IN Bad Debts
5 vat18 VAT	0.00	0.00	18 IN Other
6 vat1 VAT	0.00	0.00	1 OUT Std
7 vat10 VAT	0.00	0.00	10 OUT Change in Use
8 vat12 VAT	0.00	0.00	12 OUT Other
9 vat1a VAT	0.00	0.00	1a OUT Capital
10 vat2 VAT Zero Rate	0.00	-42,984.88	2 OUT Zero Rate
11 vat3 VAT	0.00	0.00	3 OUT Exempt

Slide 20
Slide notes:

IES Client v8.29 : My IES

Help Submit Quit Functions Commands

Query Tax Run

Tax Run Number: 0911
 Date Performed: 24/06/2010
 Performed By: BUCCO
 Up to Period: Jun 2010 (p 192)

Tax Account	Tax Amount	Volume Processed	Tax Type
1 vat14 VAT	0.00	0.00	14 IN Capital
2 vat15 VAT	549.19	4,471.09	15 IN Non-Capital
3 vat16 VAT	0.00	0.00	16 IN Change in Use
4 vat17 VAT	0.00	0.00	17 IN Bad Debts
5 vat18 VAT	0.00	0.00	18 IN Other
6 vat1 VAT	0.00	0.00	1 OUT Std
7 vat10 VAT	0.00	0.00	10 OUT Change in Use
8 vat12 VAT	0.00	0.00	12 OUT Other
9 vat1a VAT	0.00	0.00	1a OUT Capital
10 vat2 VAT Zero Rate	0.00	-42,984.88	2 OUT Zero Rate
11 vat3 VAT	0.00	0.00	3 OUT Exempt

Slide 21

Slide notes: And here we can see that the Report actually agrees with the totals shown for Tax Type 15 on Tax Run 41. Usually, we are only interested in the Tax Run Totals, but when necessary, the Tax Audit Report can provide the supporting details.

IES Client v8.29 : My IES
Help Submit Quit Functions Commands

Query Tax Run

Tax Run Number: 0915
Date Performed: 24/06/2010
Performed By: RLCO
Up to Period: Jun 2010 (p. 192)

Tax Account	Tax Amount	Volume Processed	Tax Type
1 vat14 VAT	0.00	0.00	14 IN Capital
2 vat15 VAT	549.19	4,471.99	15 IN Non-Capital
3 vat16 VAT	0.00	0.00	16 IN Change in Use
4 vat17 VAT	0.00	0.00	17 IN Bad Debts
5 vat18 VAT	0.00	0.00	18 IN Other
6 vat1 VAT	0.00	0.00	1 OUT Std
7 vat10 VAT	0.00	0.00	10 OUT Change in Use
8 vat12 VAT	0.00	0.00	12 OUT Other
9 vat1a VAT	0.00	0.00	1a OUT Capital
10 vat2 VAT Zero Rate	0.00	-42,984.88	2 OUT Zero Rate
11 vat3 VAT	0.00	0.00	3 OUT Exempt

Slide 22
Slide notes:



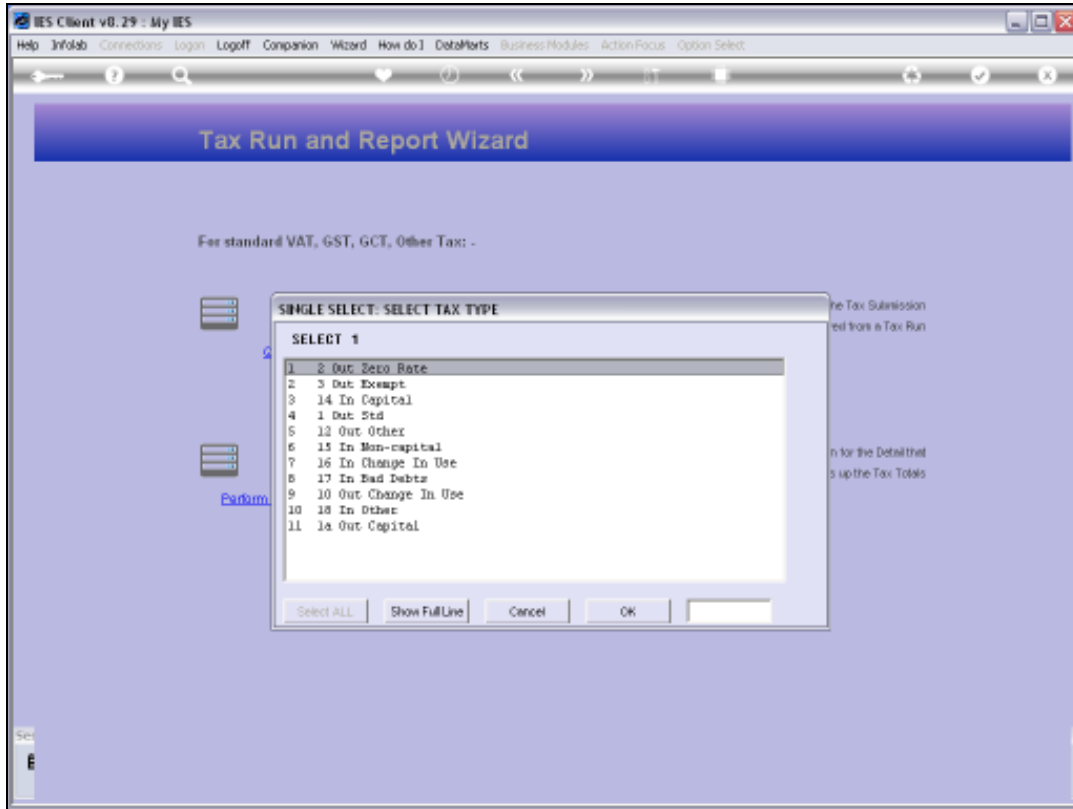
Slide 23

Slide notes:



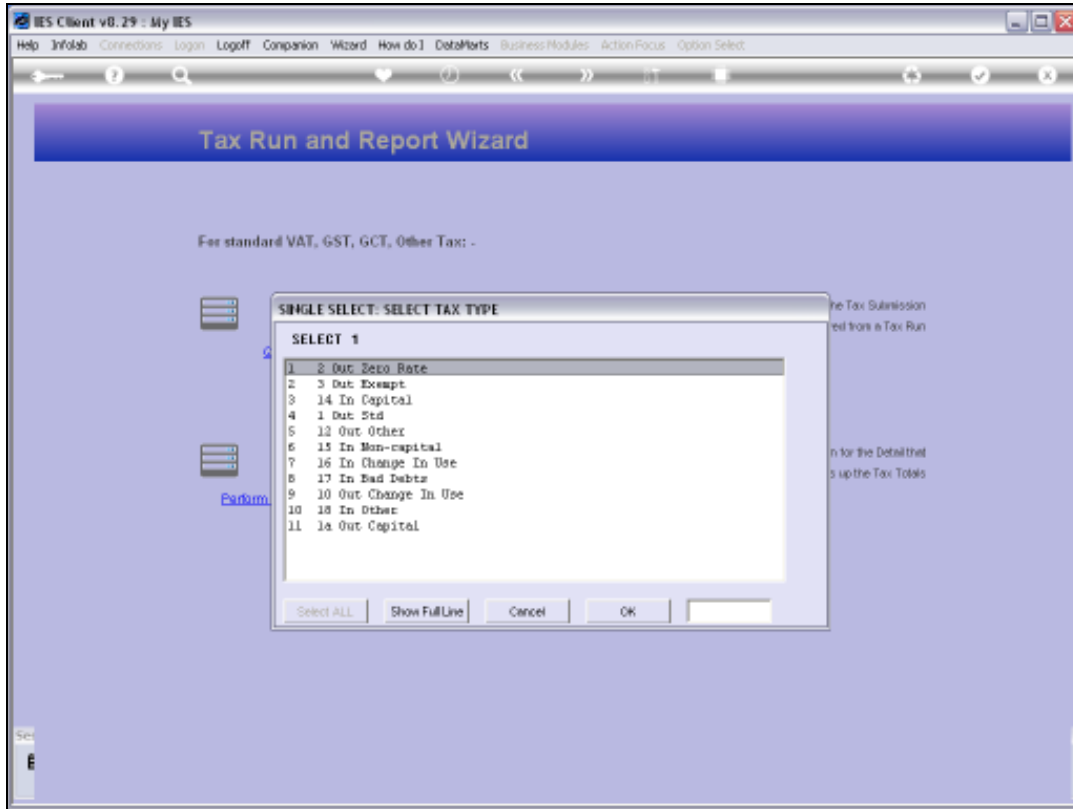
Slide 24

Slide notes: In our next example, we will perform a Month Audit.



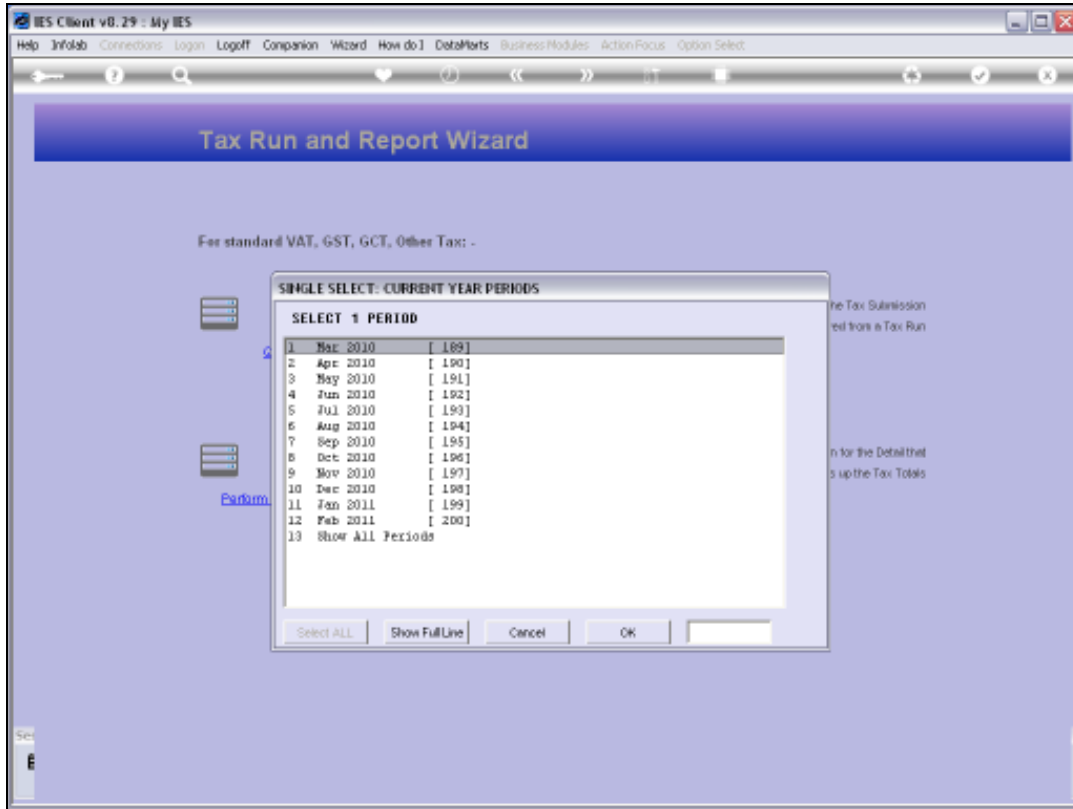
Slide 25

Slide notes: In this case, we also select a Tax Type, followed by selection of a Month or Financial Period, and then we get an Audit Trail of the linked Tax Account for that Month.



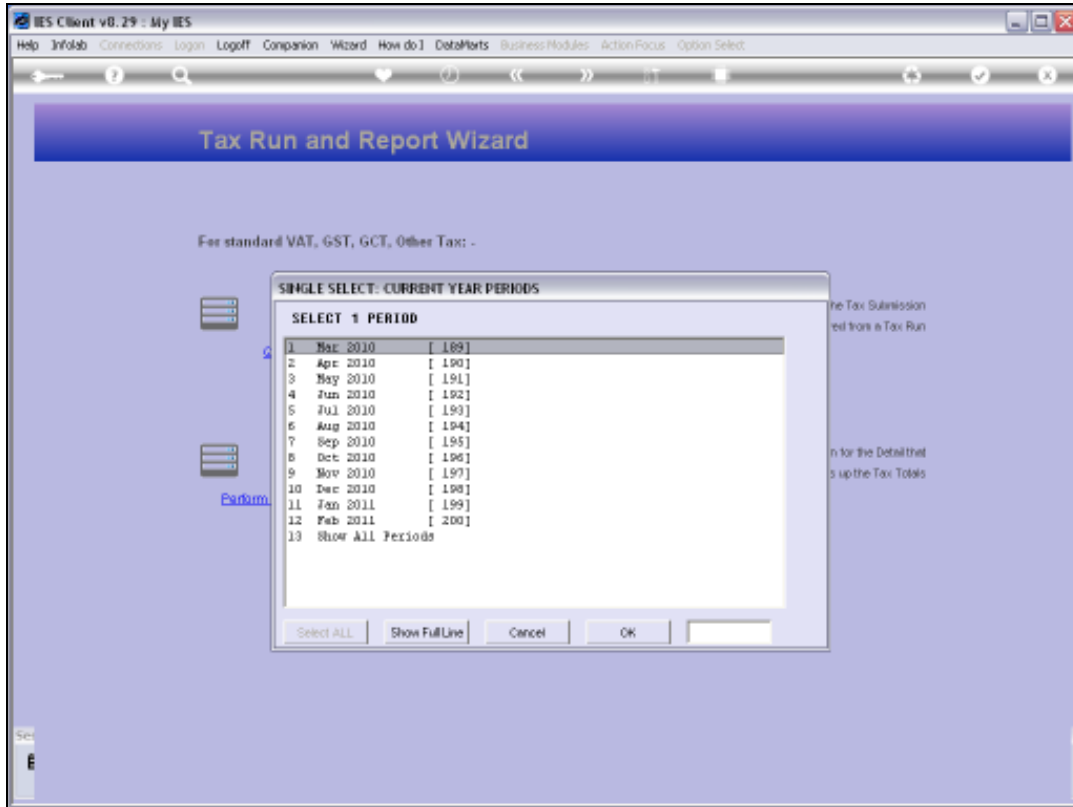
Slide 26

Slide notes:



Slide 27

Slide notes:



Slide 28
Slide notes:

```
T1551672836.TXT - Notepad
File Edit Format View Help

                                vax15 VAT
                                *****

Tax ledger transaction listing at Jun 2010 printed 24/06/2010 printed 24/06/2010 00001
-----
                                folio   tax run  $          actual
-----
03/06/10 Computer Maint      011b     1       10-202  0041          195.99
03/06/10 Computer Maint      011b     1       10-204  0041          167.30 TT-0306 1549519121A
12/06/10 Telkom               012     1       10-217  0041           11.20 TT-0306 1549519122A
                                -----          127.95 TT-1206 1550444766A
Jun 2010 printed 24/06/2010                                -----
                                                                502.34
                                                                -----
                                                                502.34
                                                                *****
```

Slide 29

Slide notes: And here we have the result. The Tax Audit Trail options are available in support of the Tax Run totals with the required detail of where the Tax Totals on the Returns derive from.