



Slide 1

Slide notes: In Accounting Controls, at the 'Manage' menu, we have a function to manage 'problems'. This is essentially a Support Function that may never be used at our site, because these functions are designed to fix issues that only arise in really awkward conditions, like network crashes, hardware problems, or other.



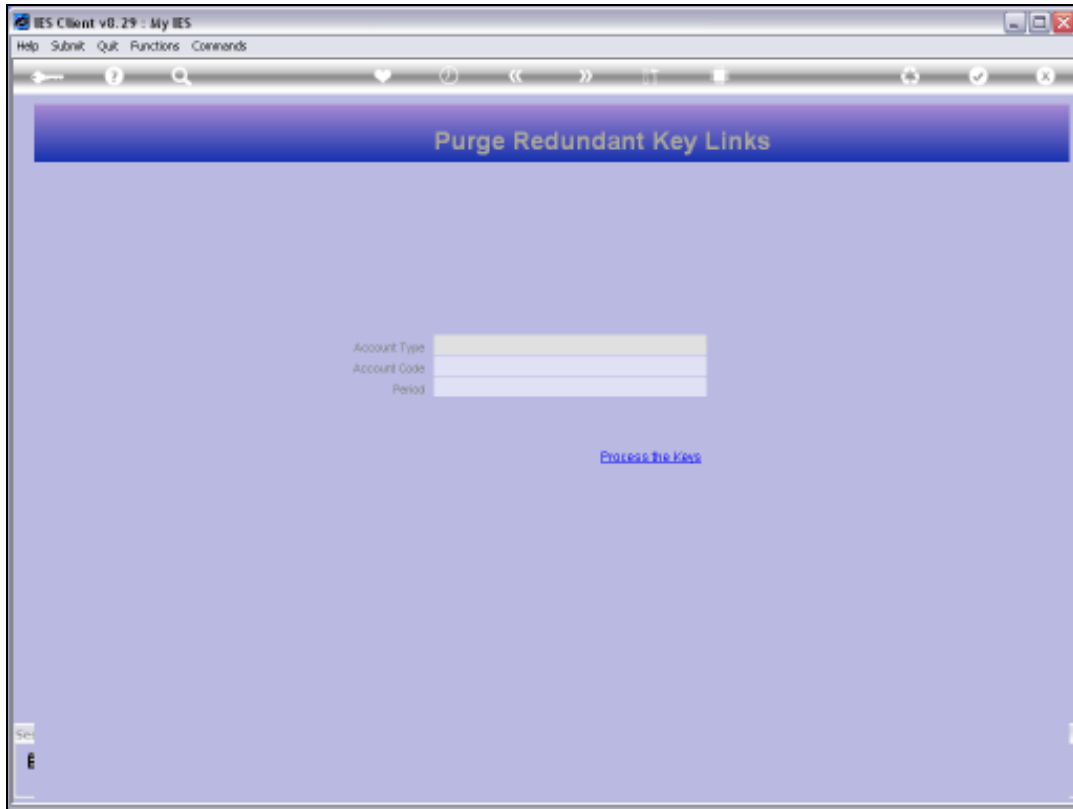
Slide 2

Slide notes: The function that we look at in this example, is the one to 'Eliminate Duplicate Account Keys'. The symptom that may lead us to use this function is when we look at an Audit Trail Report or a Transaction Drill and we see the same Transaction reported more than once.

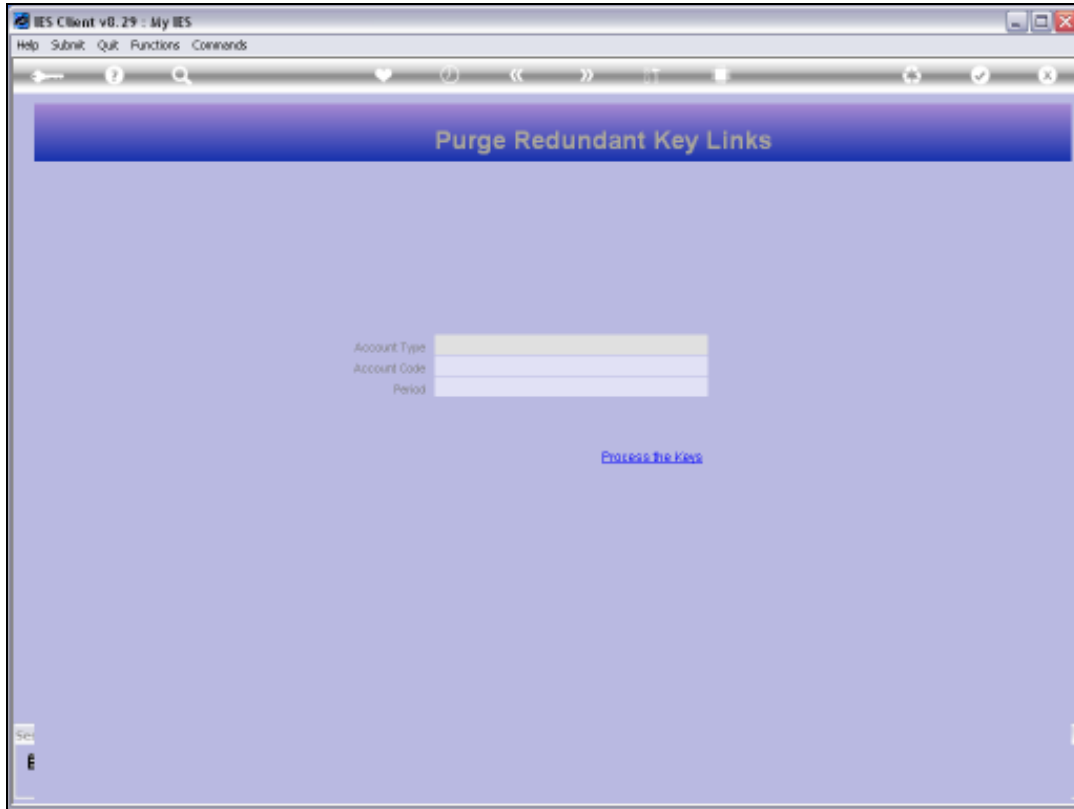


Slide 3

Slide notes: This type of problem does not affect Account Balances, only reporting of Transactions.



Slide 4
Slide notes:

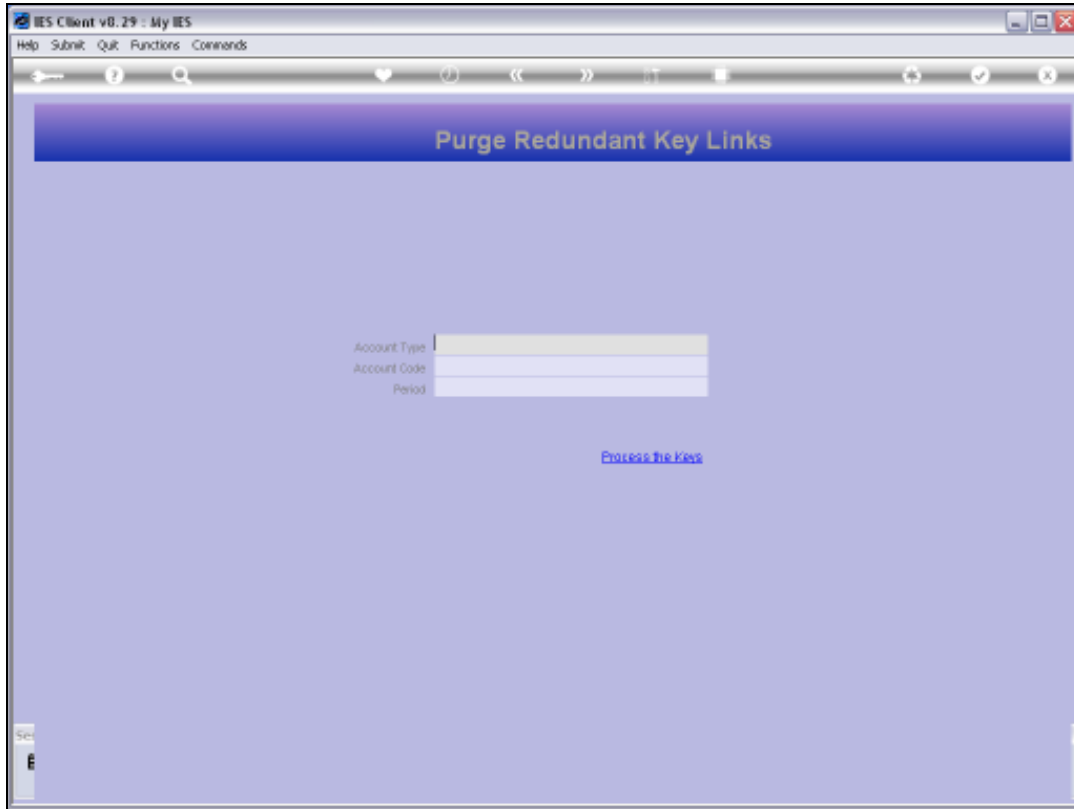


Slide 5
Slide notes:

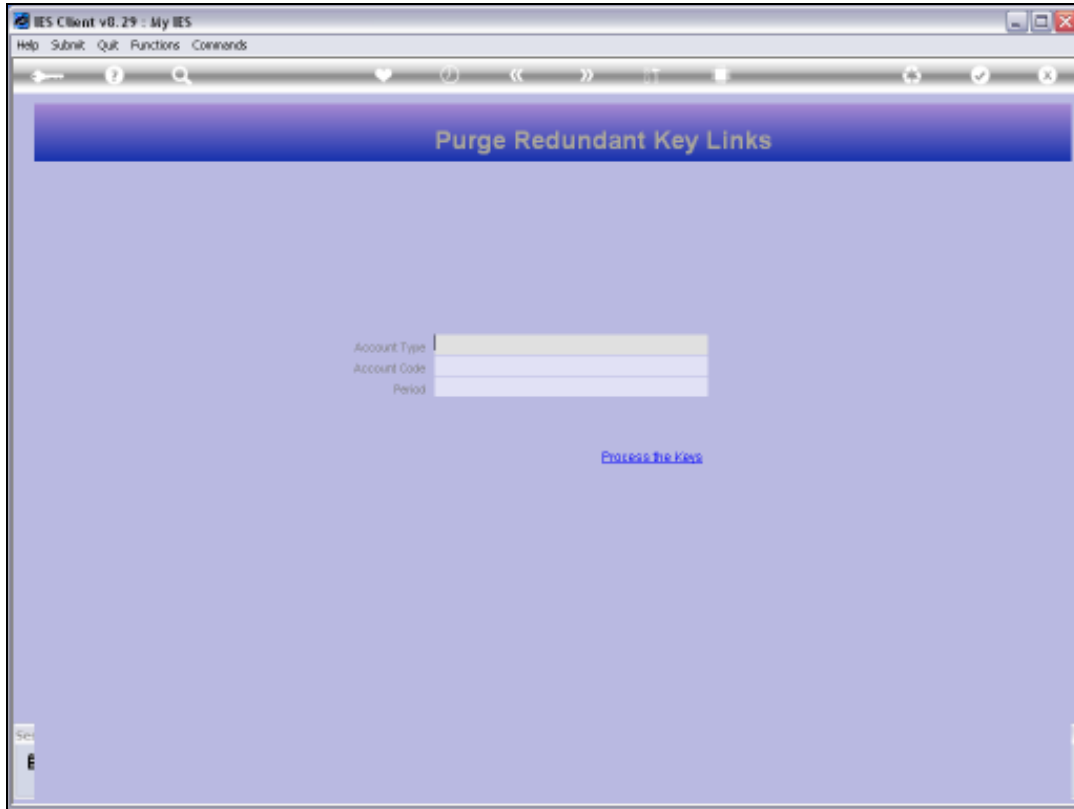


Slide 6

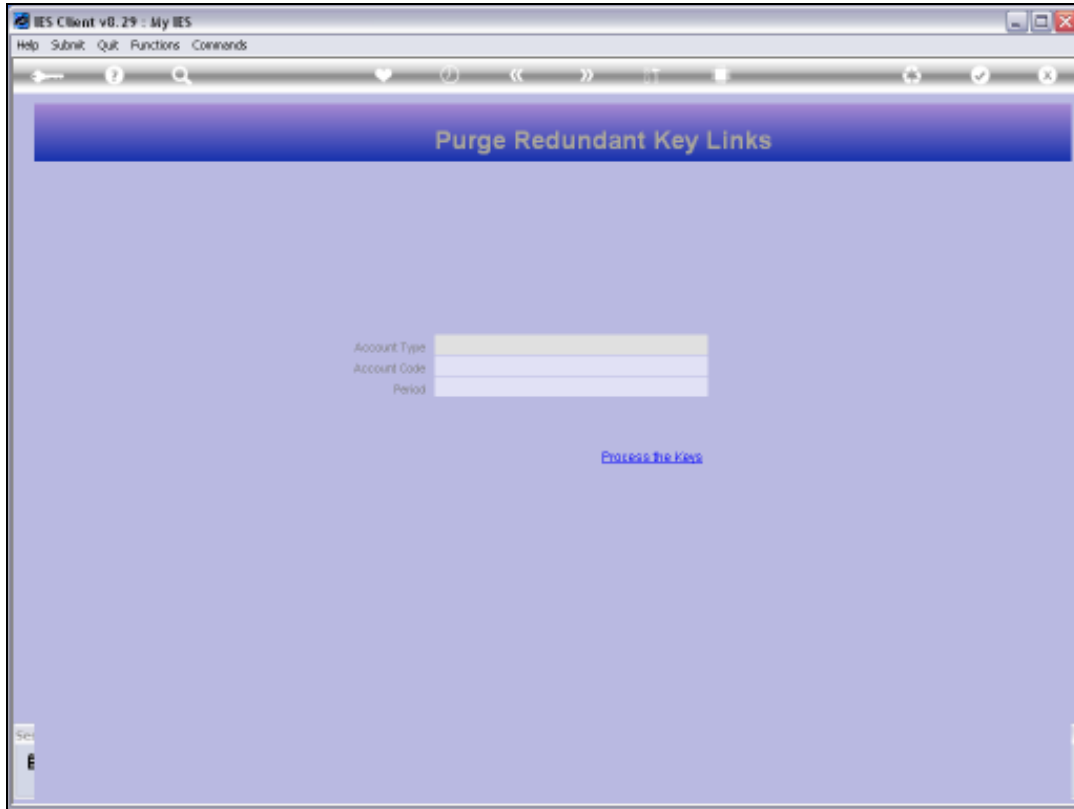
Slide notes: When we check the Help, we can see that this action can be performed on a number of different types of Accounts.



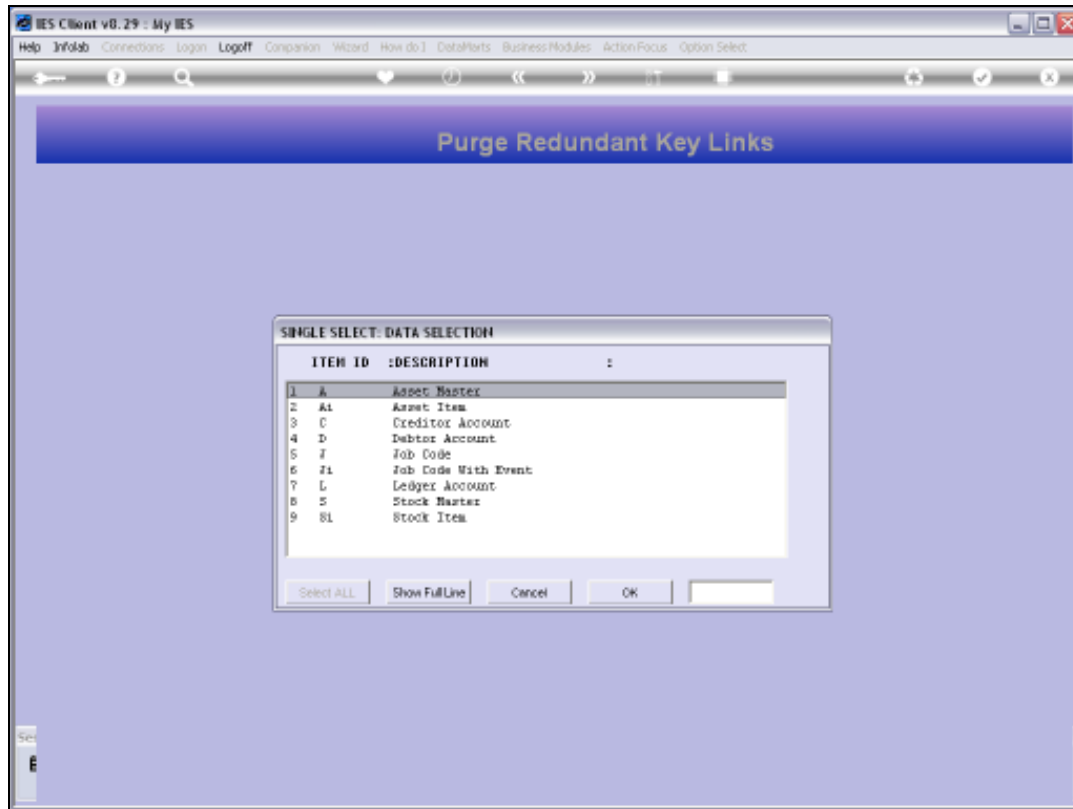
Slide 7
Slide notes:



Slide 8
Slide notes:

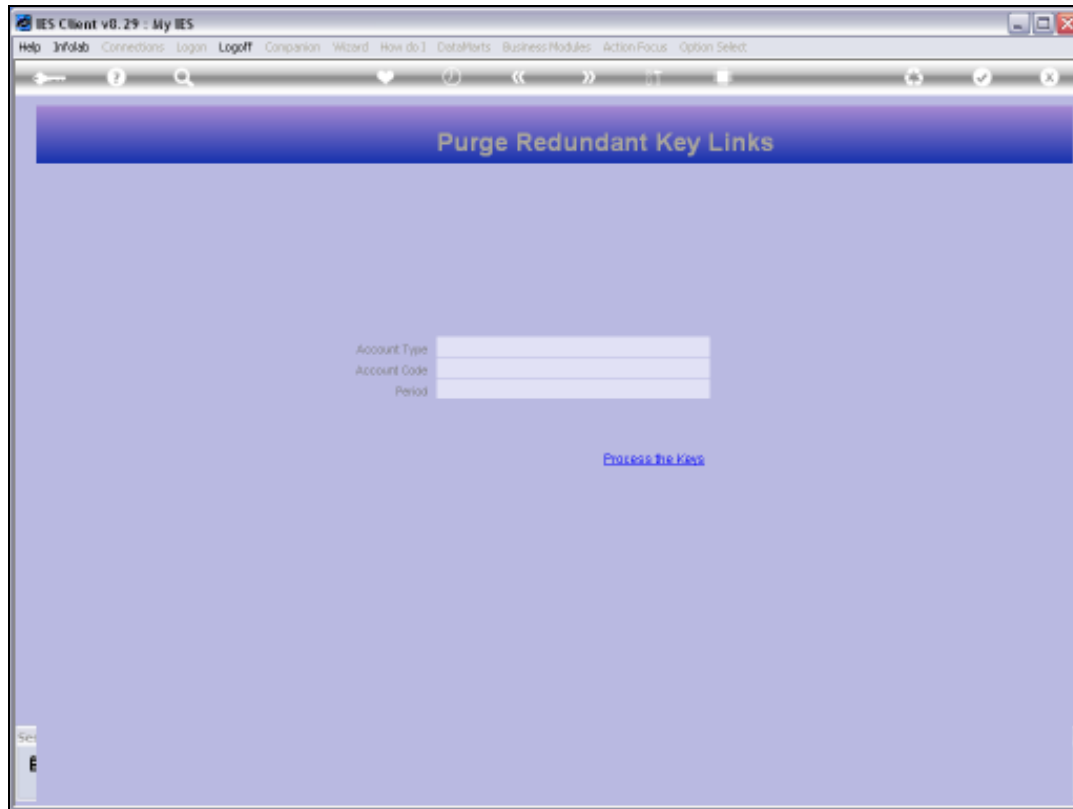


Slide 9
Slide notes:



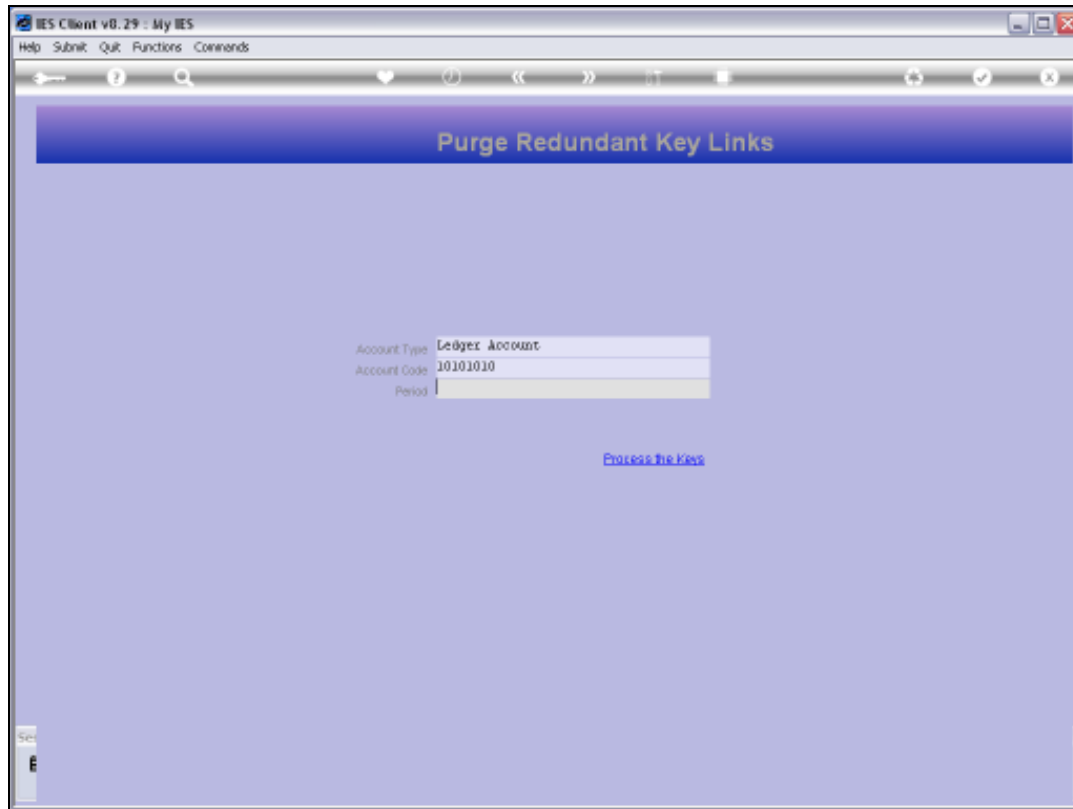
Slide 10

Slide notes: We can also select the Account Type from the lookup.



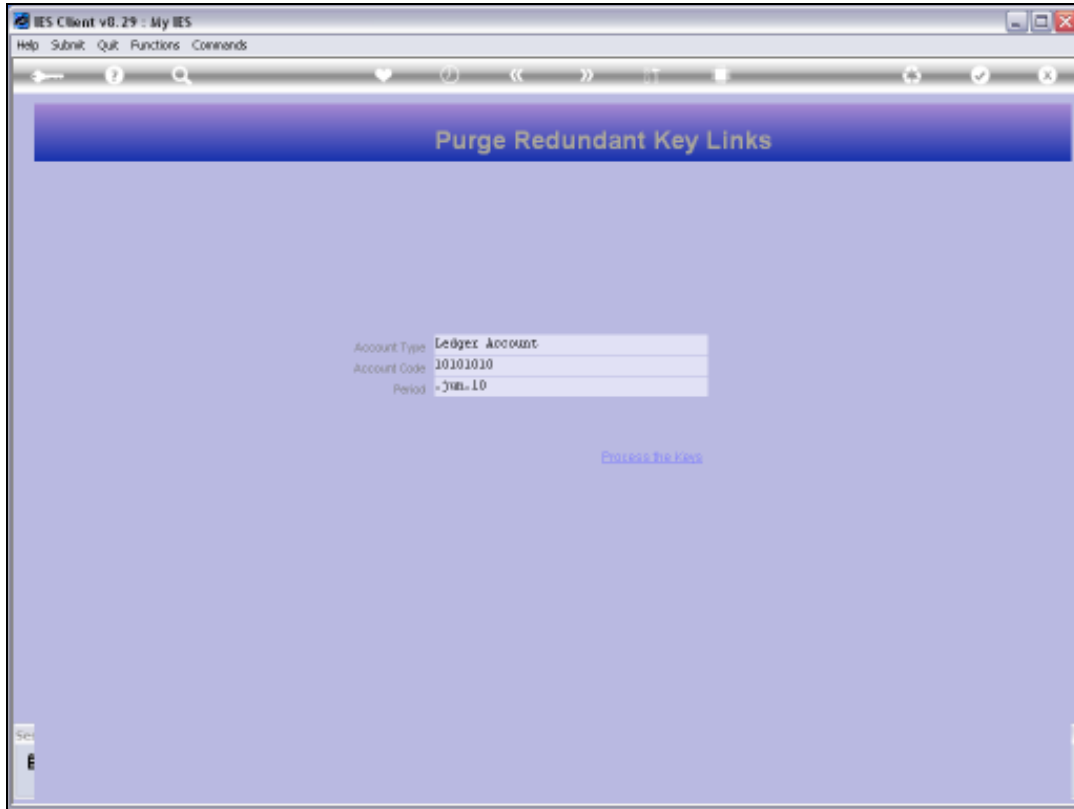
Slide 11

Slide notes: The Account Number we must already know, and we cannot expect to use a lookup for that now.



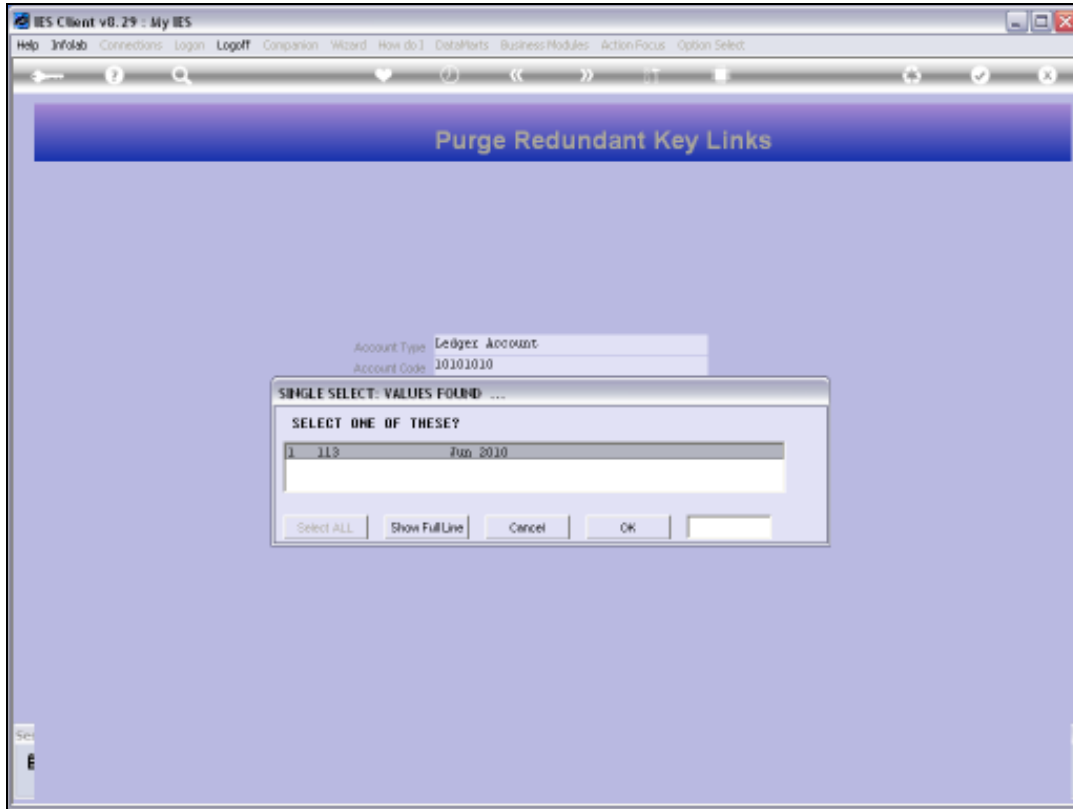
Slide 12

Slide notes: Finally, we select the Financial Period in which the problem exists for the stated Account.



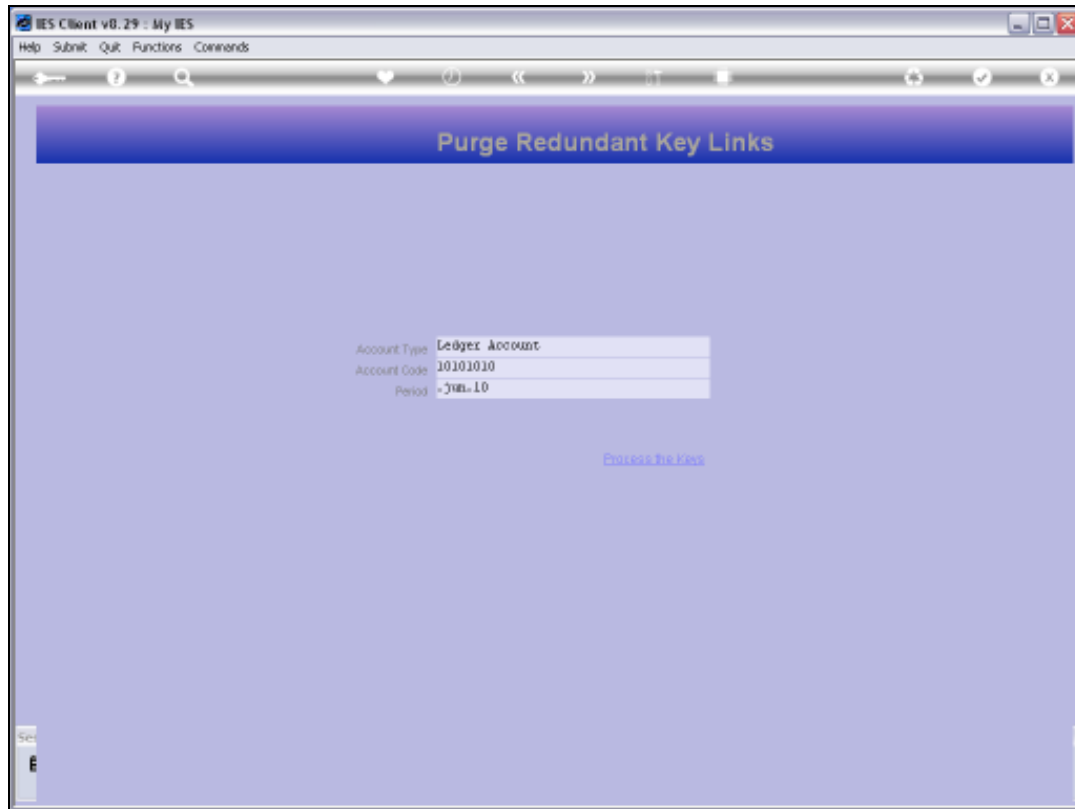
Slide 13

Slide notes:



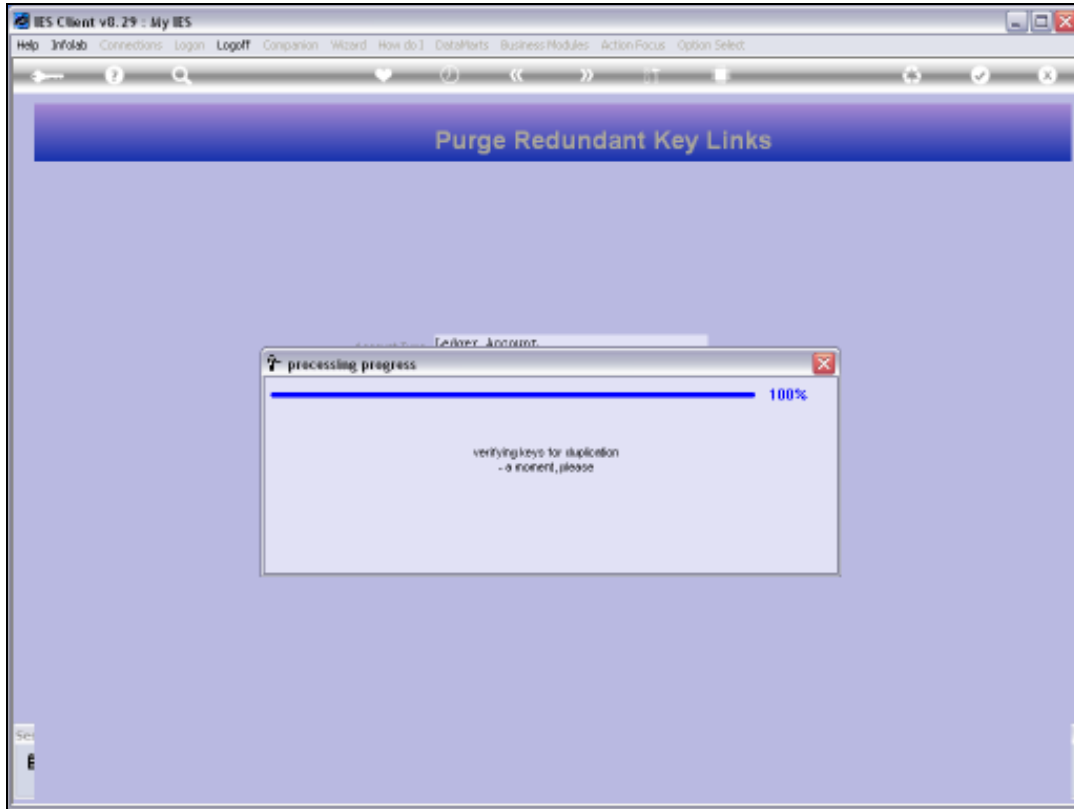
Slide 14

Slide notes:



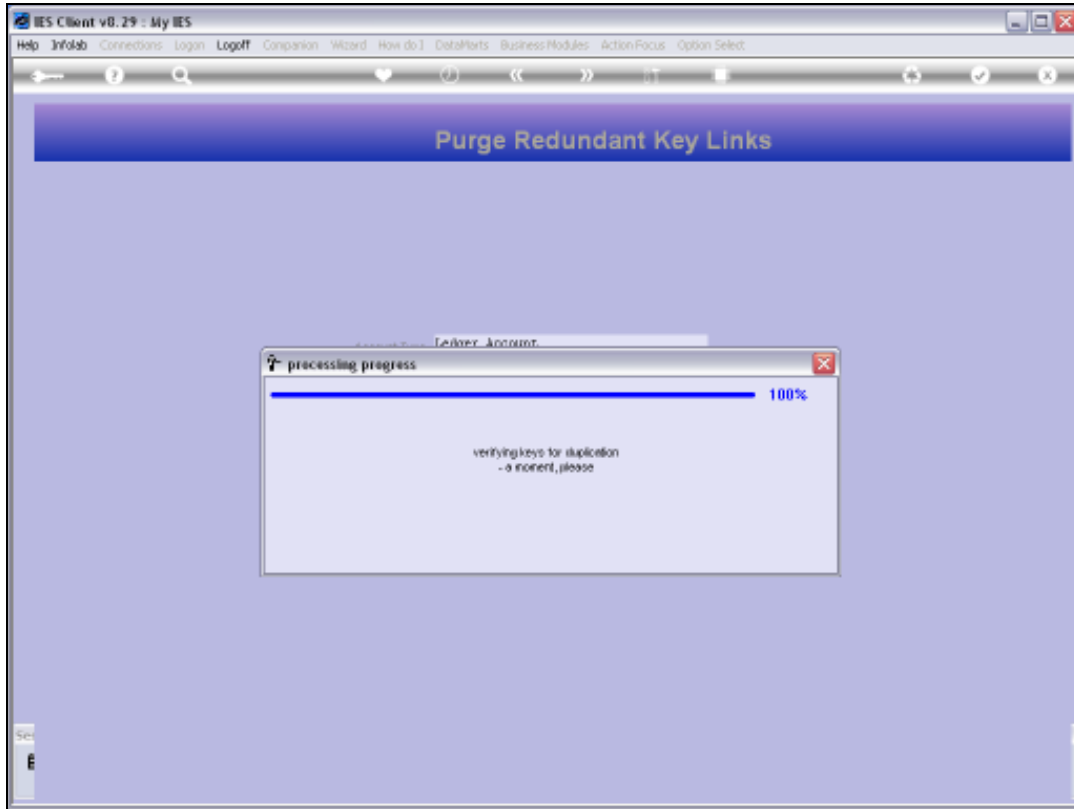
Slide 15

Slide notes: And then we just choose 'Process the Keys' and the system will fix the problem. If there is no problem, we can also do it, and it will be quite safe. In other words, it is a benign function that will only fix a problem that exists, otherwise it will not do anything.



Slide 16

Slide notes:



Slide 17

Slide notes:



Slide 18
Slide notes: