



Slide 1

Slide notes: IES has a number of recovery tools for technology failure incidents. Normally, when there is a system crash, power failure & UPS failure, or other, we would recover from a backup. However, there are times when we may, on advice, use one of the utilities that IES provides to correct a problem without having to revert to a full prior backup.



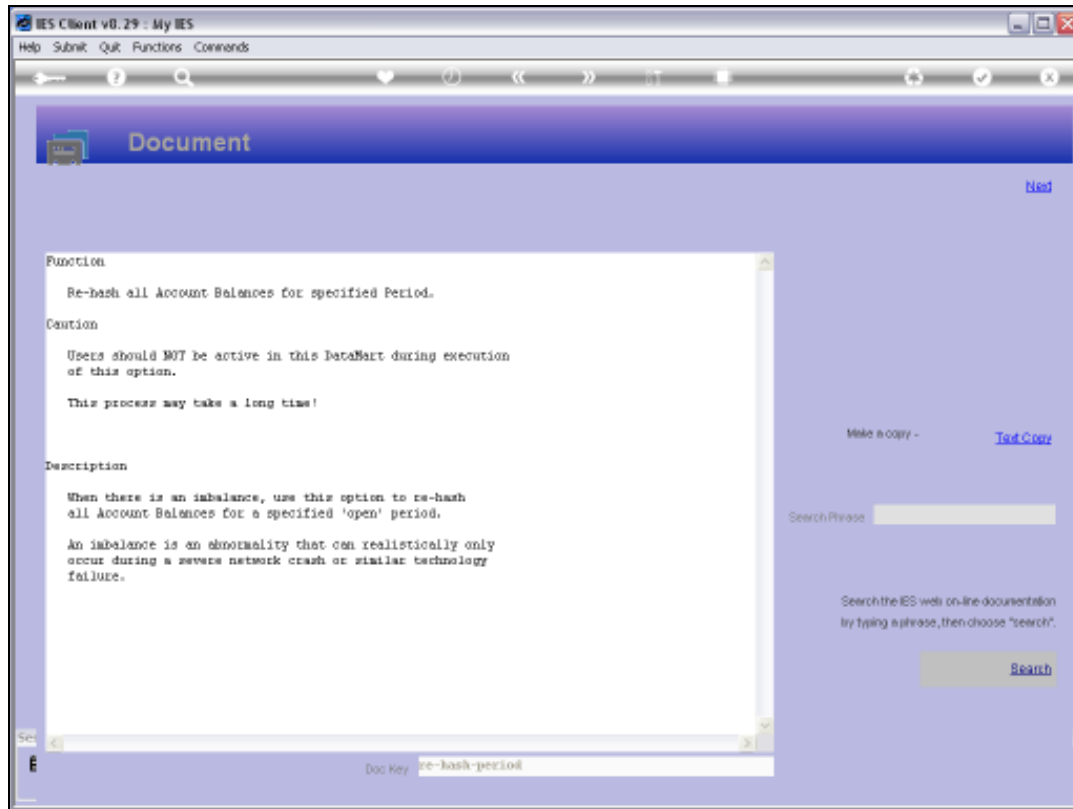
Slide 2

Slide notes: The Re-Hashing of Balances is such a Support Tool that we find at Accounting Controls, at the Manage Problems menu.



Slide 3

Slide notes: In this tutorial we look at an example of re-hashing a single Period.

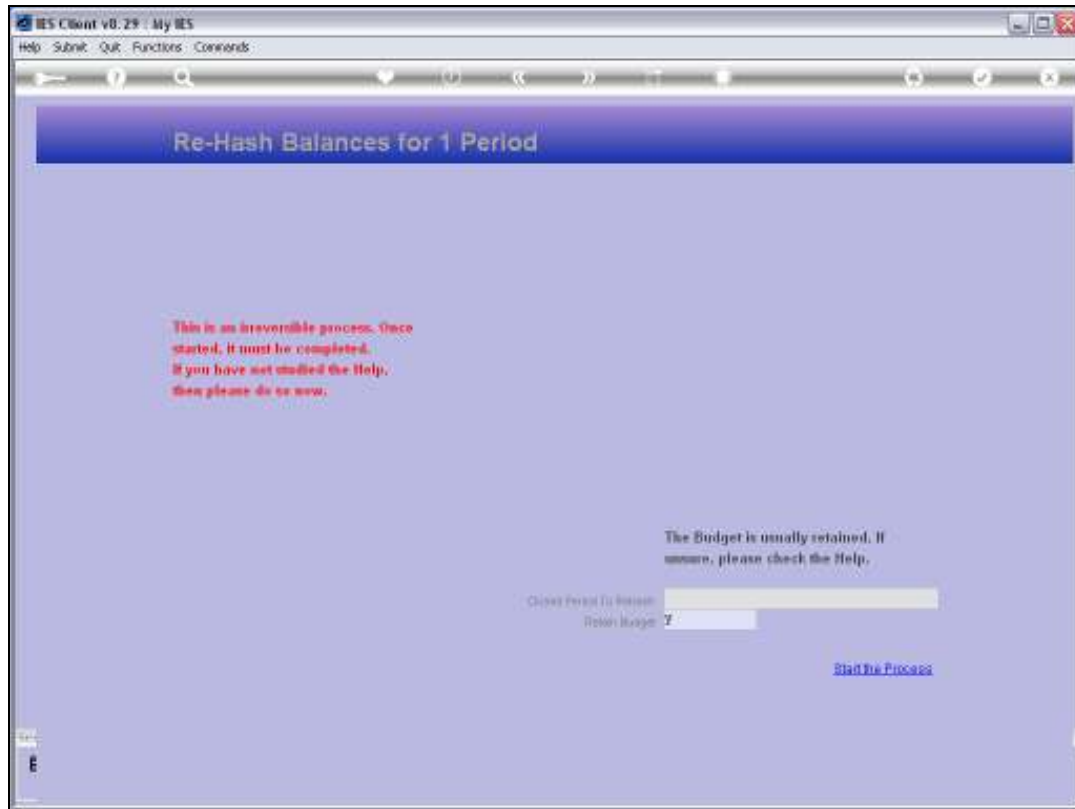


Slide 4

Slide notes: The system explains briefly what and why.



Slide 5
Slide notes:

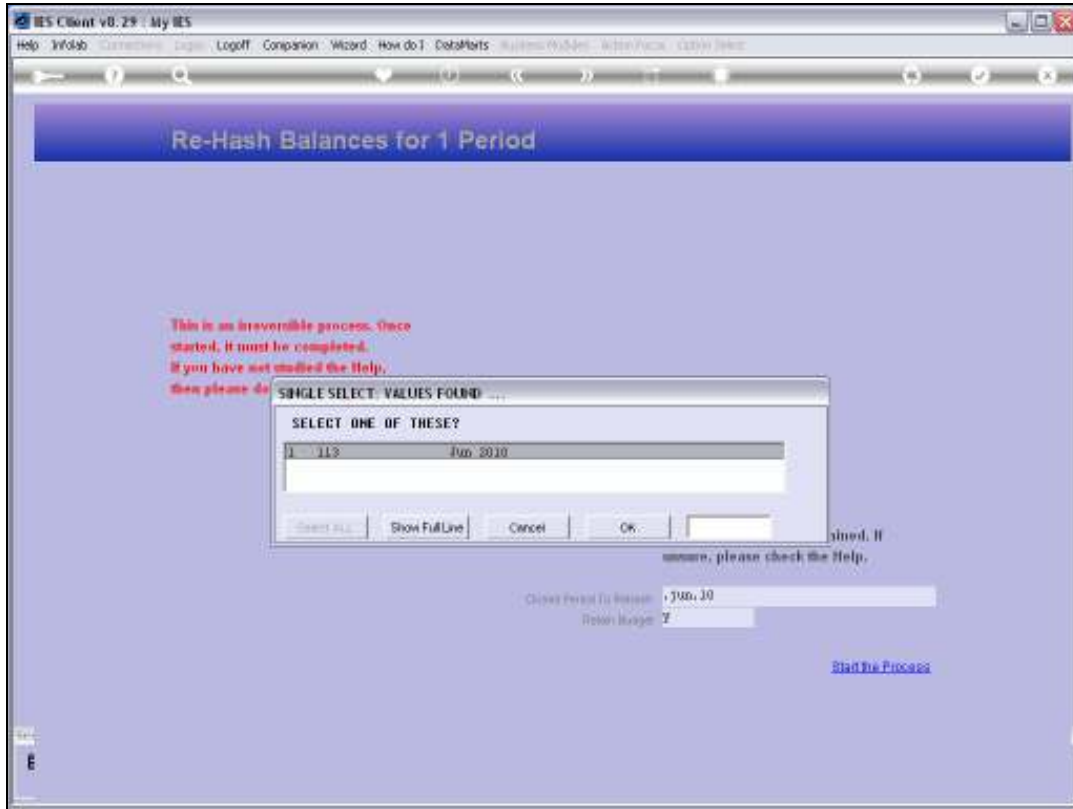


Slide 6

Slide notes: We need to select a Closed Period and we will perform this operation when Users are not working on the system.



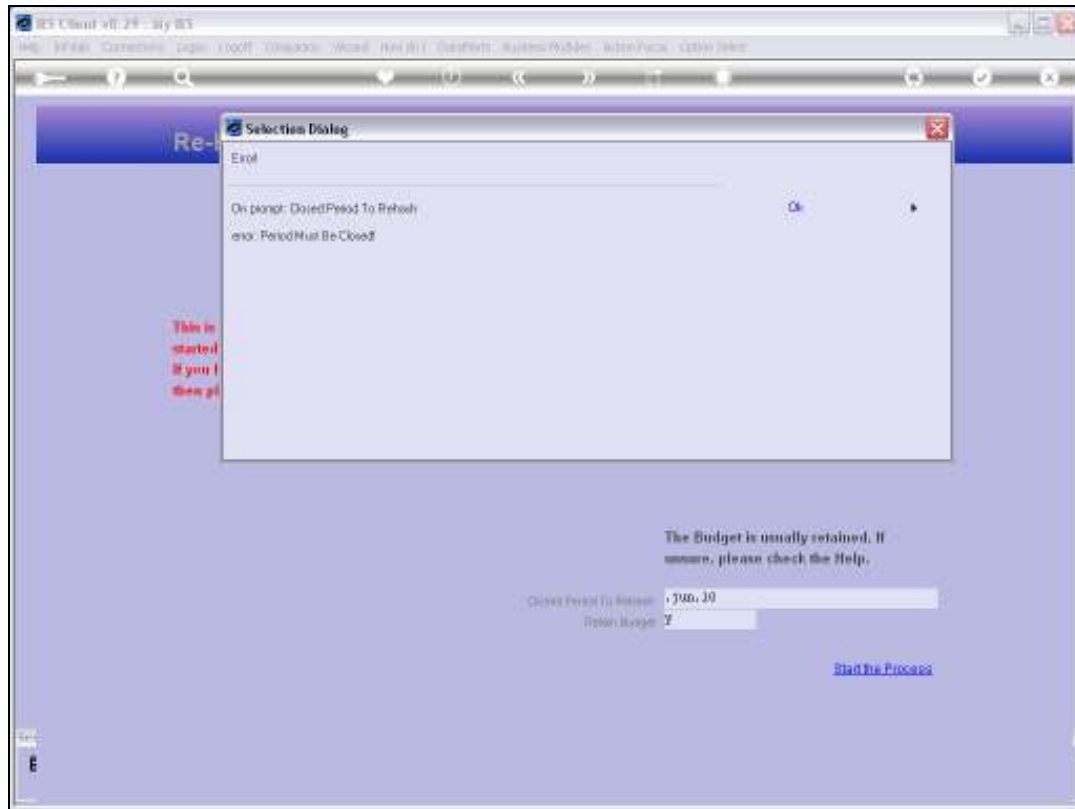
Slide 7
Slide notes:



Slide 8
Slide notes:



Slide 9
Slide notes:



Slide 10

Slide notes: This Period is not closed, so we cannot do it. Now we will select a Period that is really Closed.

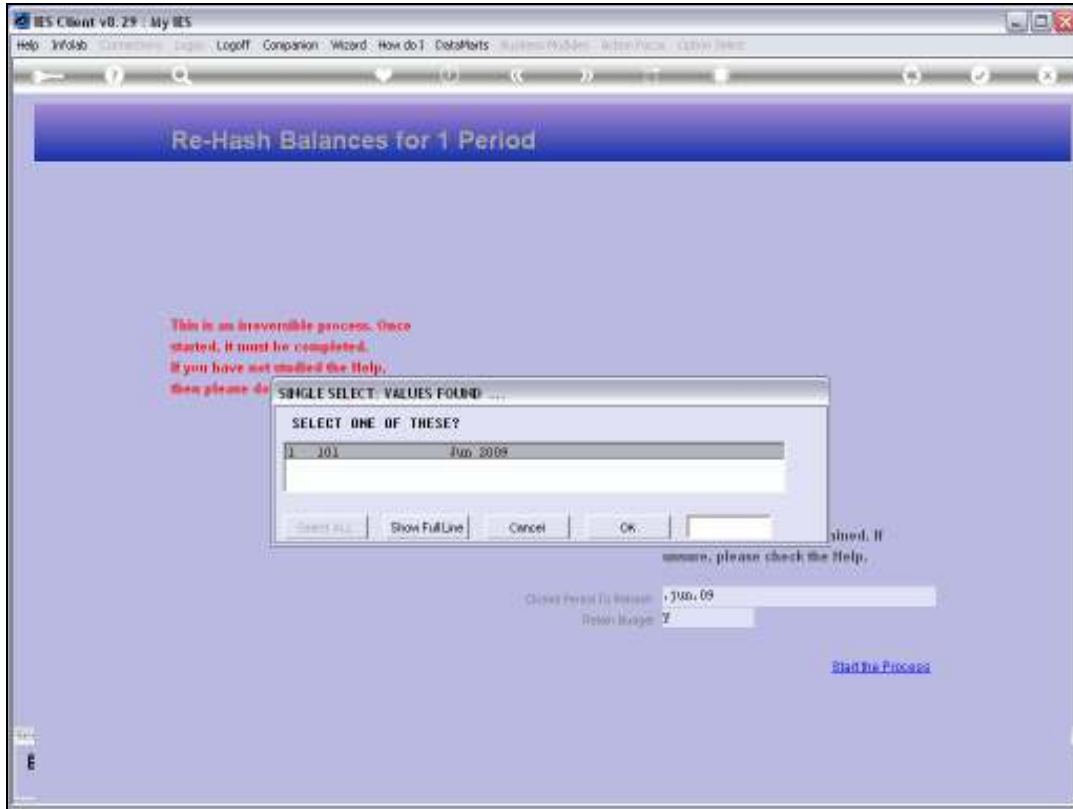


Slide 11
Slide notes:



Slide 12

Slide notes:

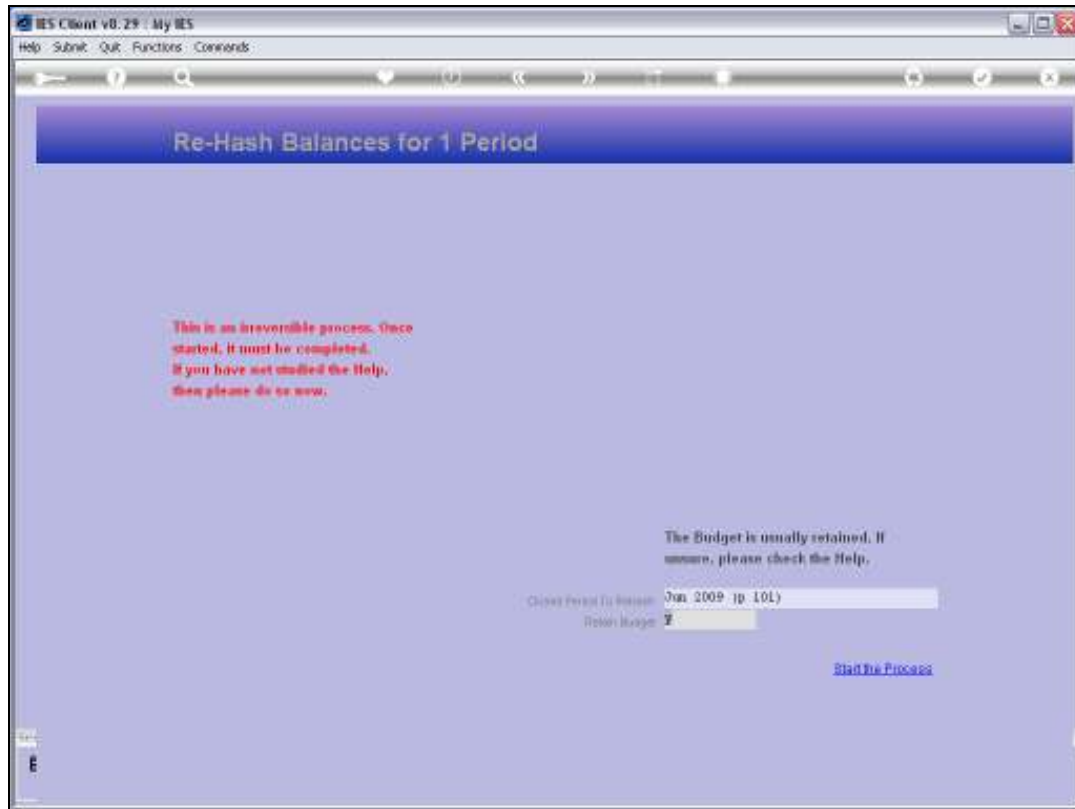


Slide 13
Slide notes:



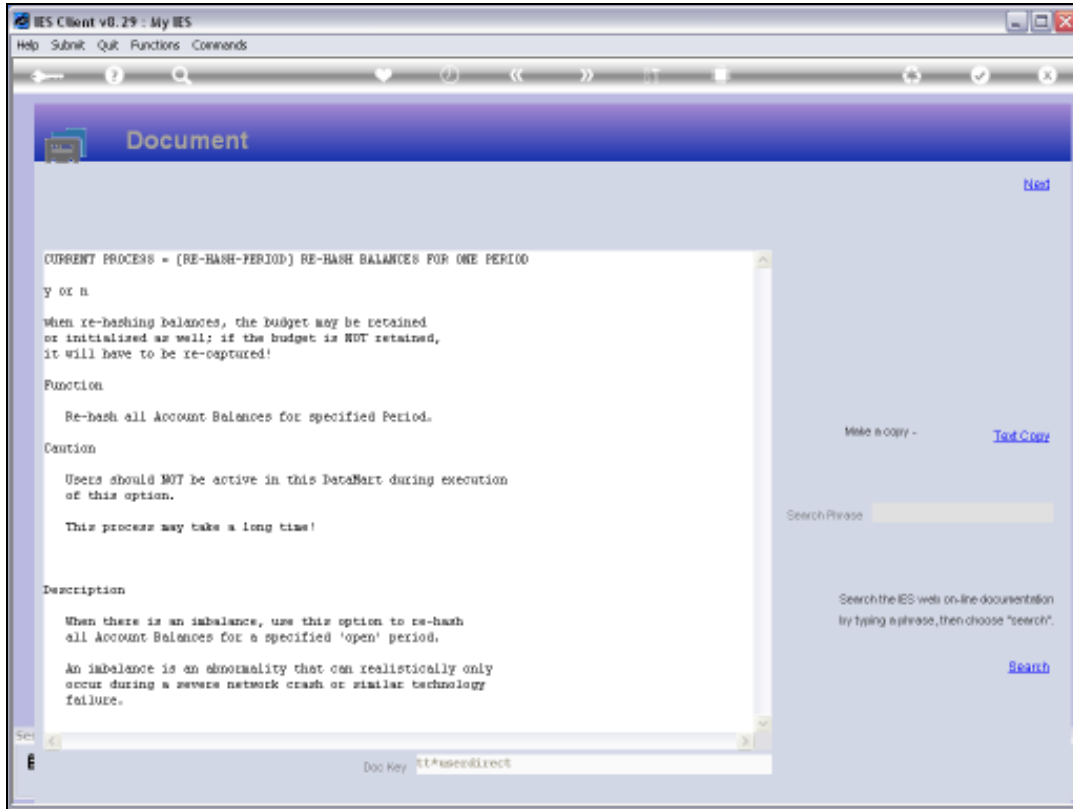
Slide 14

Slide notes:



Slide 15

Slide notes: And this time the Period is accepted. The Budget may be retained, so we usually state 'y' here.



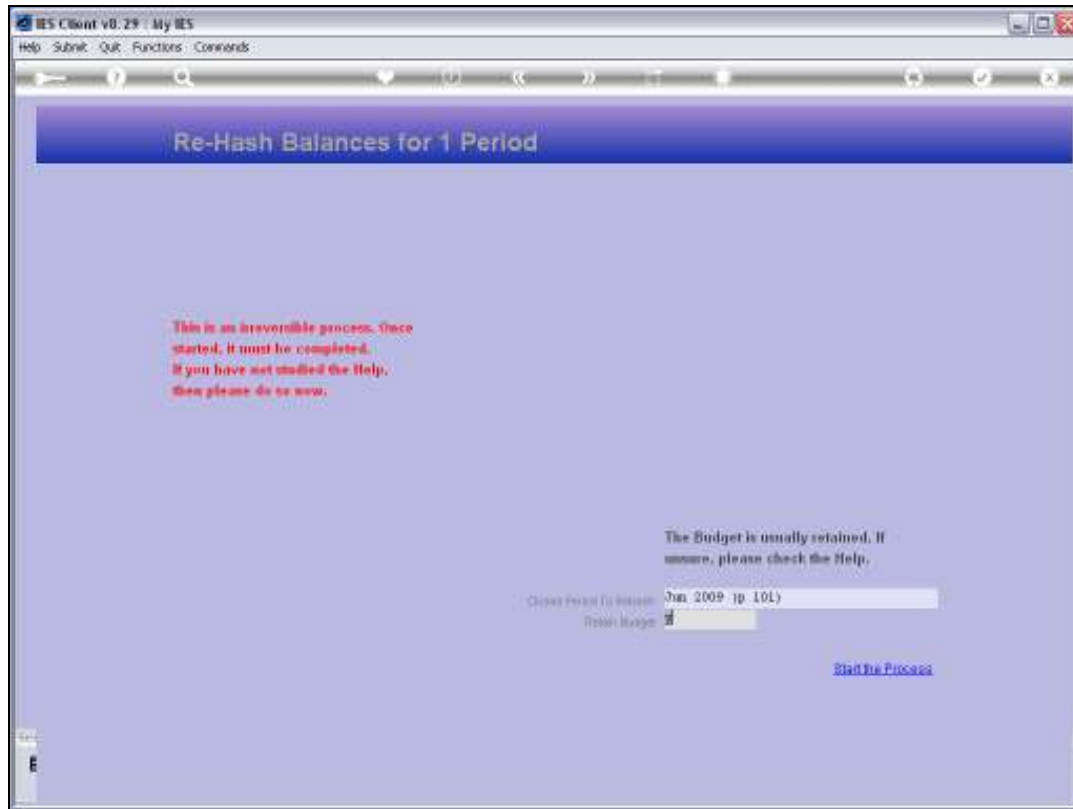
Slide 16

Slide notes: This Help explains about the Budget option.



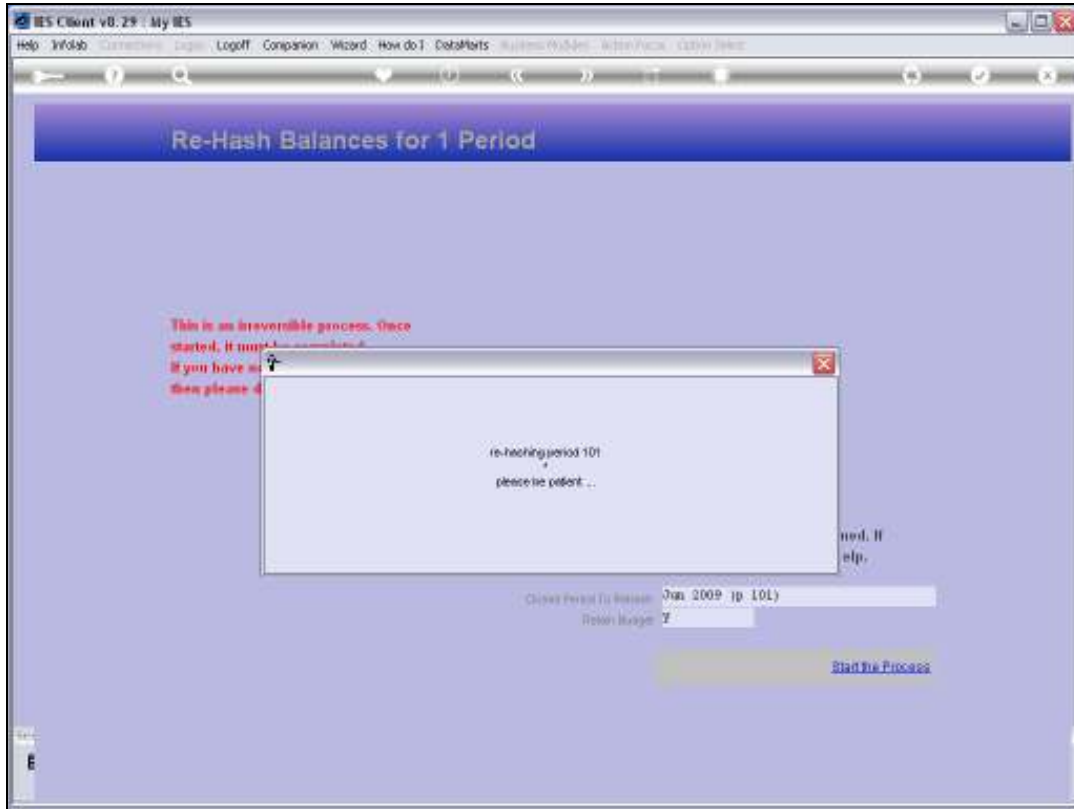
Slide 17

Slide notes:

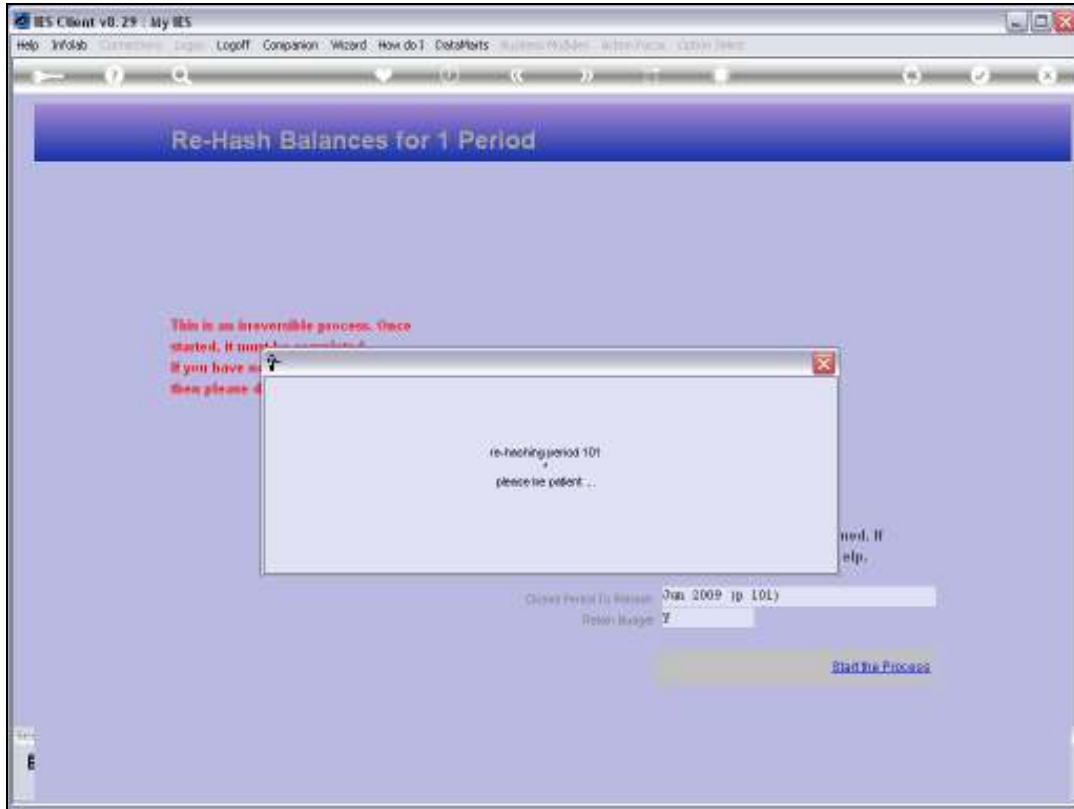


Slide 18

Slide notes: To proceed, we choose 'Start the Process'.



Slide 19
Slide notes:



Slide 20

Slide notes:



Slide 21

Slide notes: When it is all done, the system will return to the menu.