



Slide 1

Slide notes: Interest Calculation Runs are performed from the option at the Interest Linked Accounts menu.



Slide 2
Slide notes:



Slide 3
Slide notes:

The screenshot shows a web browser window titled "IES Client v8.29 : My IES". The browser's address bar and navigation buttons are visible. The main content area has a purple header with the text "Perform Interest Calculation Run". Below the header, there are several input fields and a text block:

- A text input field labeled "Run Name (Required)".
- A text input field labeled "Run Type".
- A text input field labeled "Execution Period".
- A text input field labeled "Data Source to Use" with the value "LINKED INTEREST LINKED ACCOUNTS".
- A blue button labeled "Perform Run".

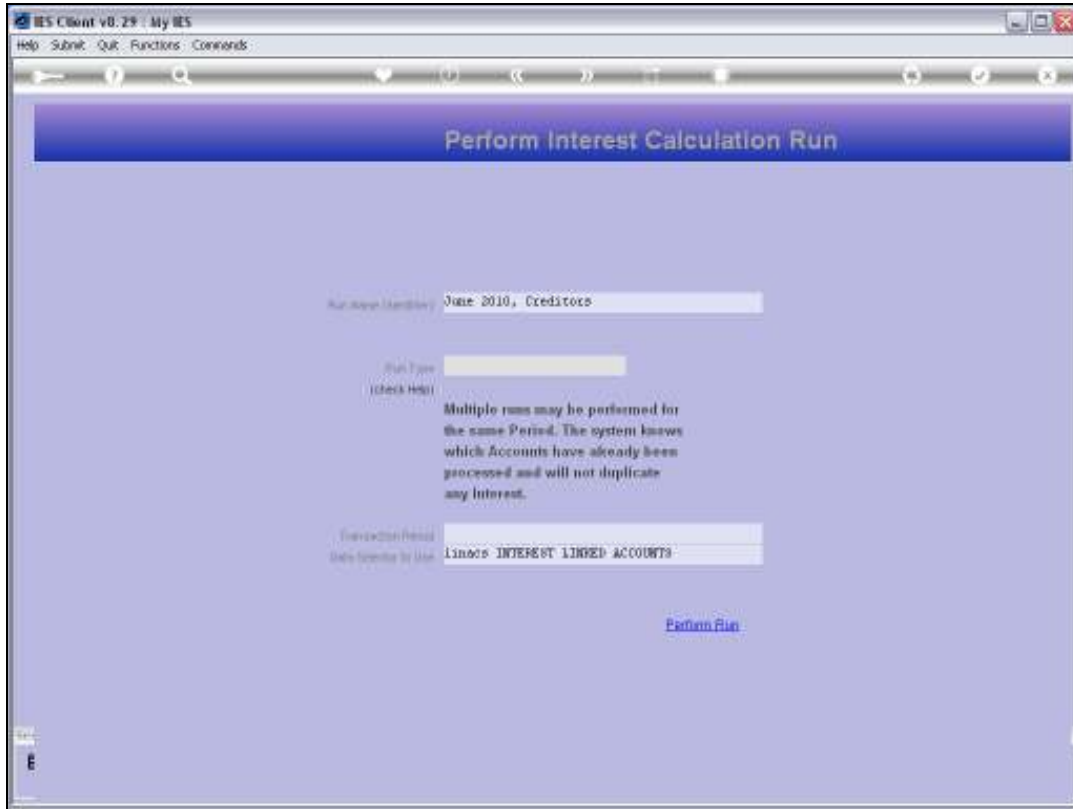
Below the "Run Type" field, there is a text block that reads: "Multiple runs may be performed for the same Period. The system knows which Accounts have already been processed and will not duplicate any interest."

Slide 4

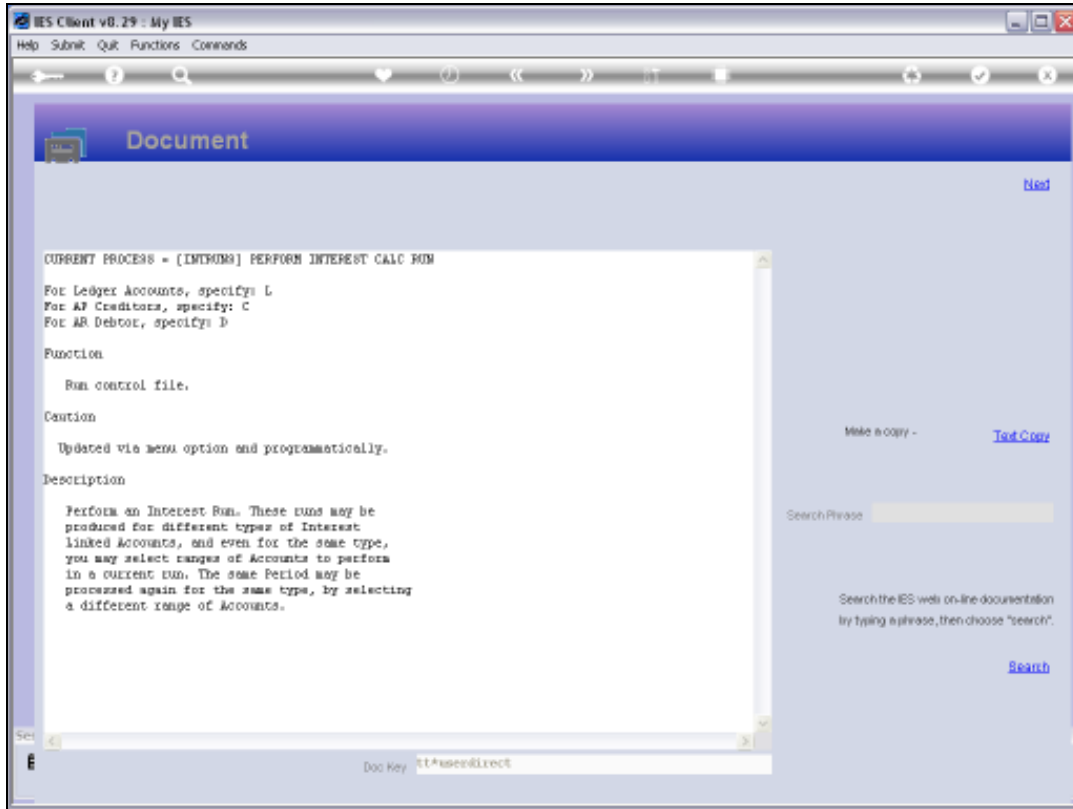
Slide notes: For Loans, the Interest Calculation is performed in the Loans Module. Here, we perform Interest Calculation only for GL, Creditors and Debtors Accounts.



Slide 5
Slide notes:



Slide 6
Slide notes:

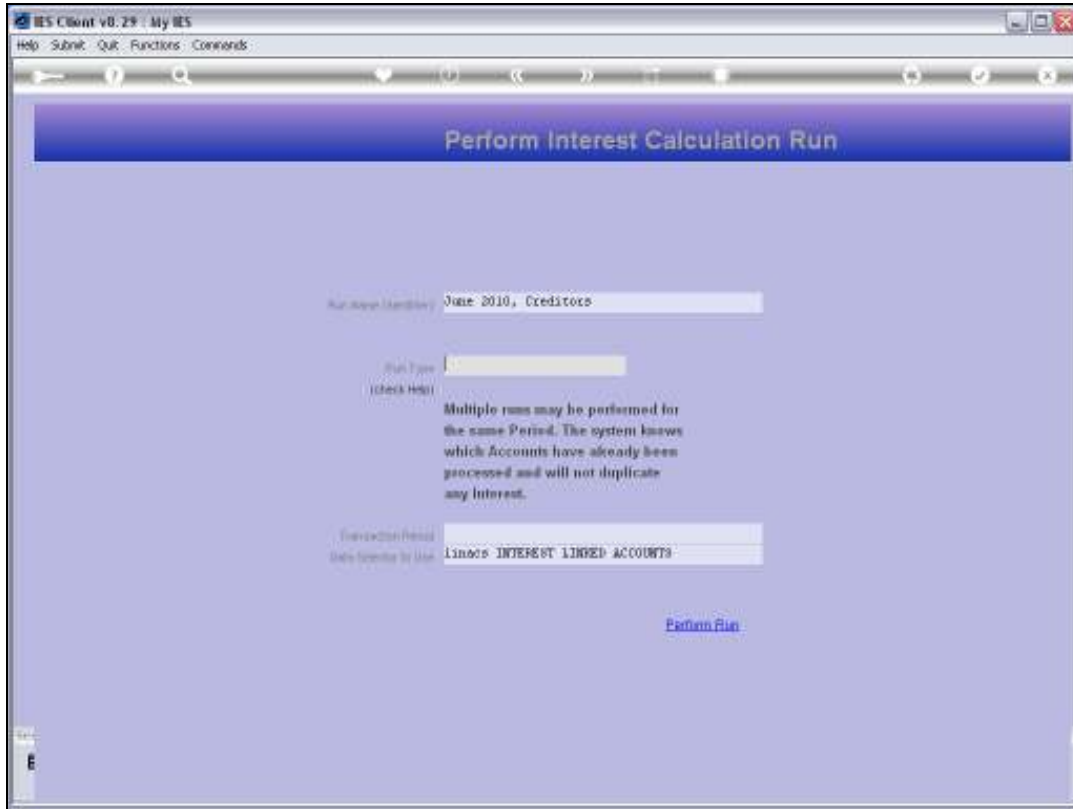


Slide 7

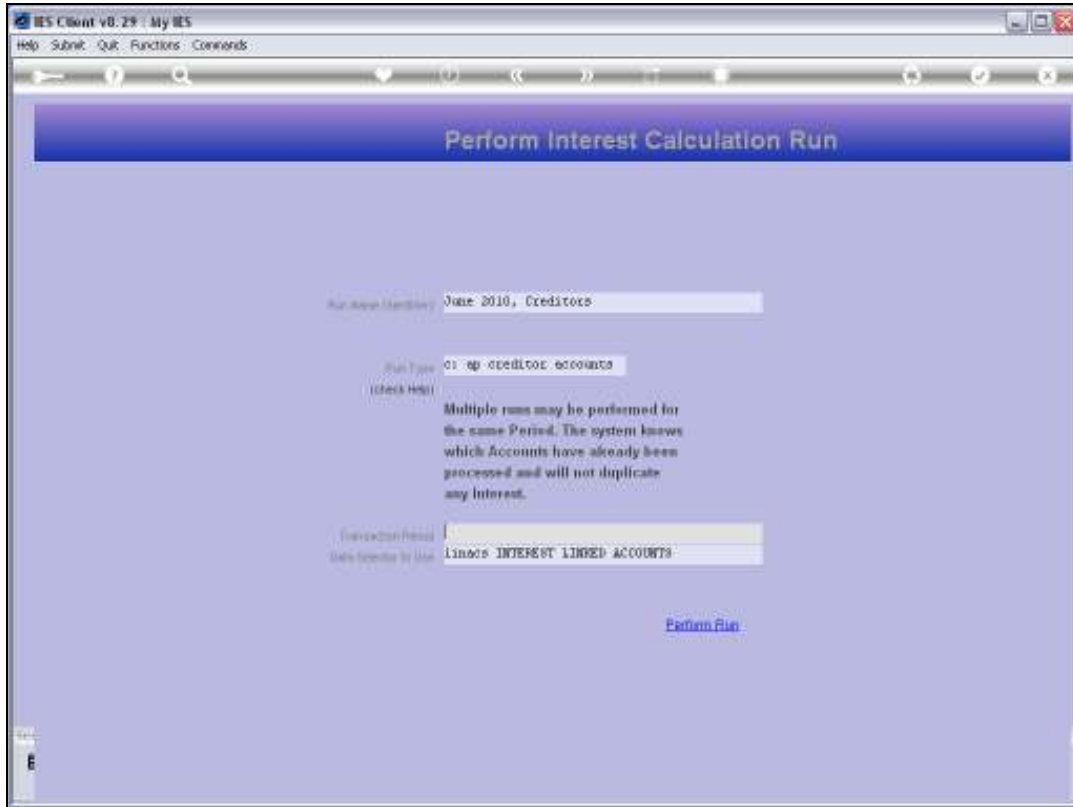
Slide notes: The Run Type will be for Ledger, Debtors or Creditors.



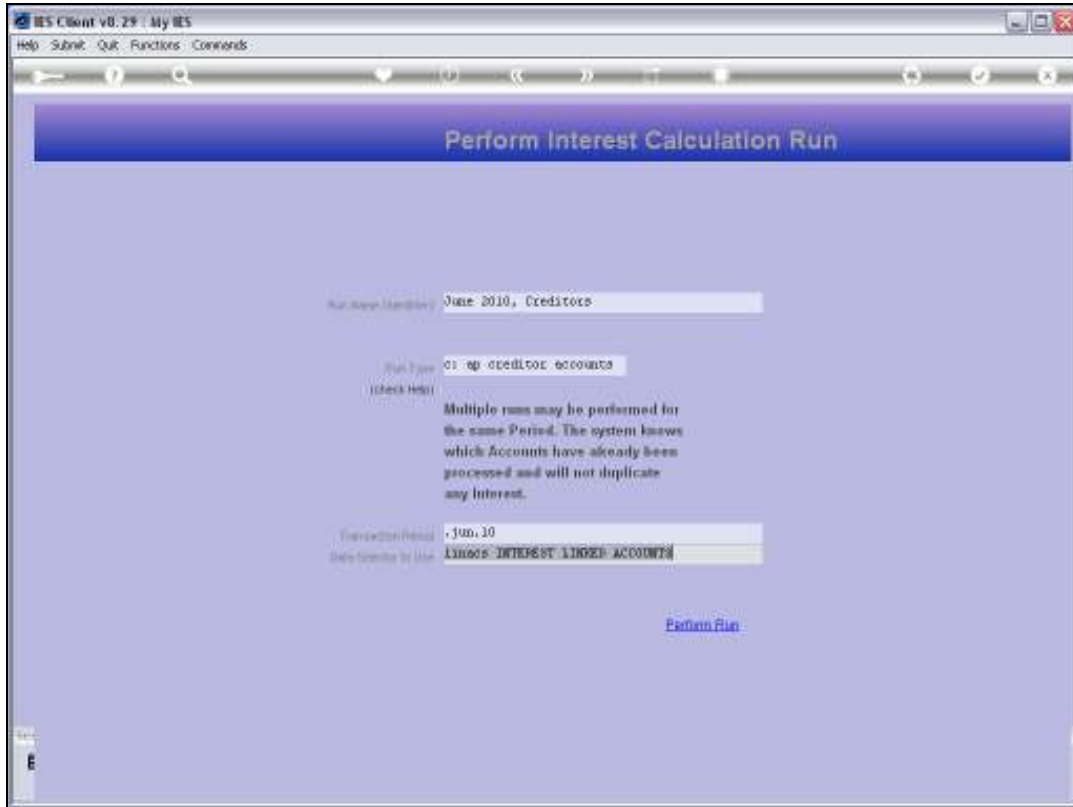
Slide 8
Slide notes:



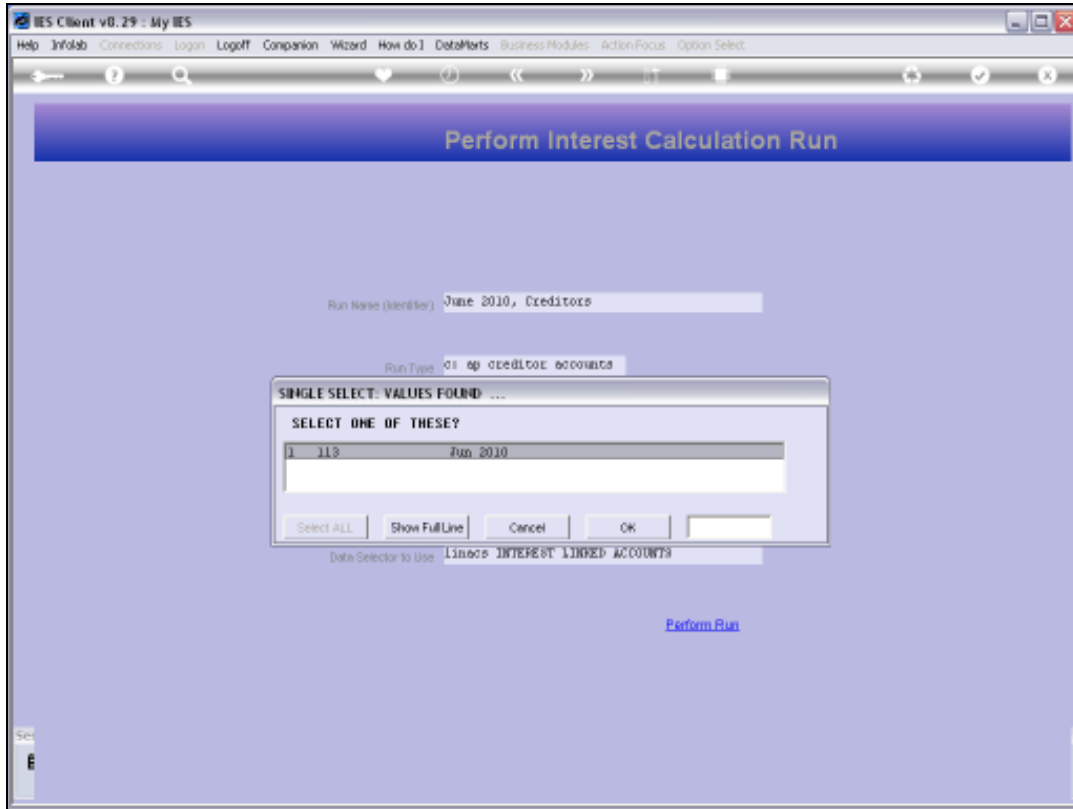
Slide 9
Slide notes:



Slide 10
Slide notes:



Slide 11
Slide notes:



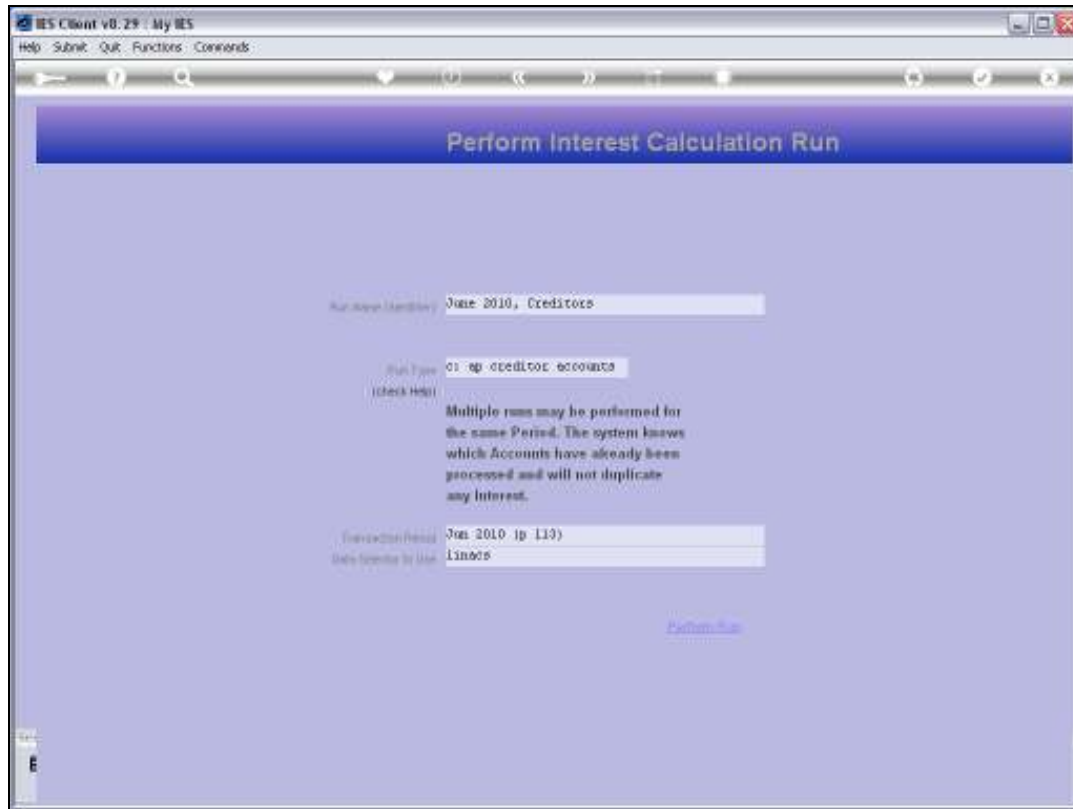
Slide 12

Slide notes: We select the primary Period for the Interest Calculation.



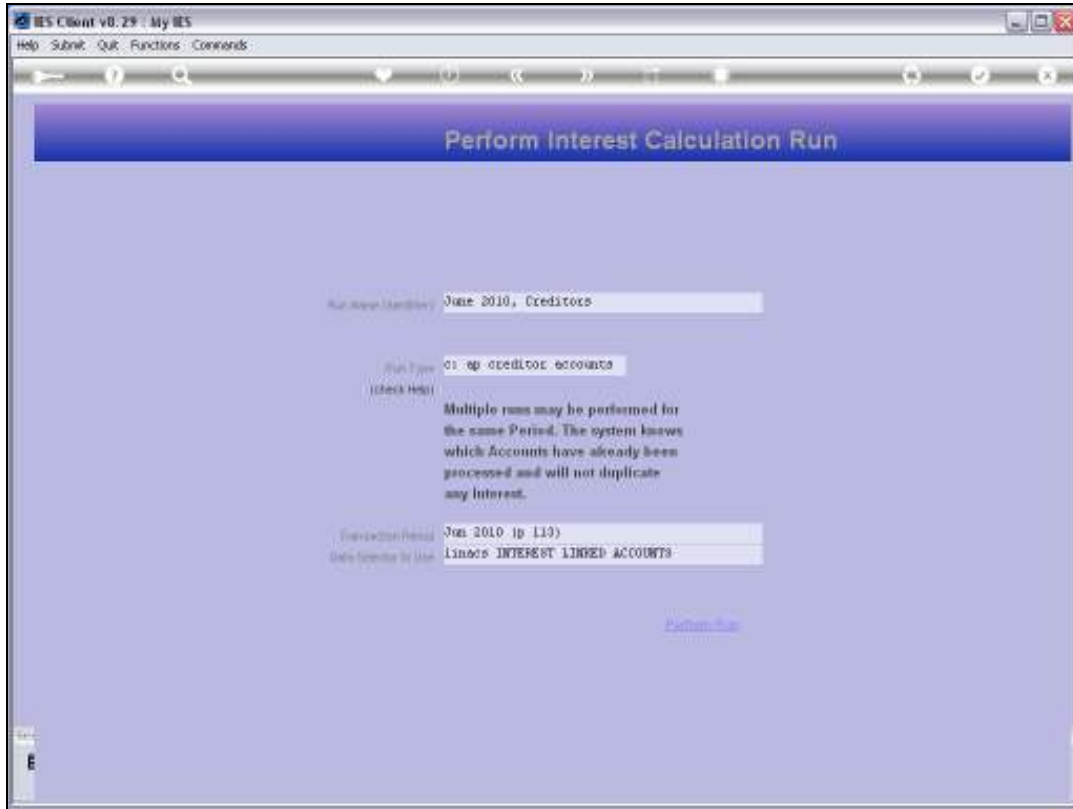
Slide 13

Slide notes:



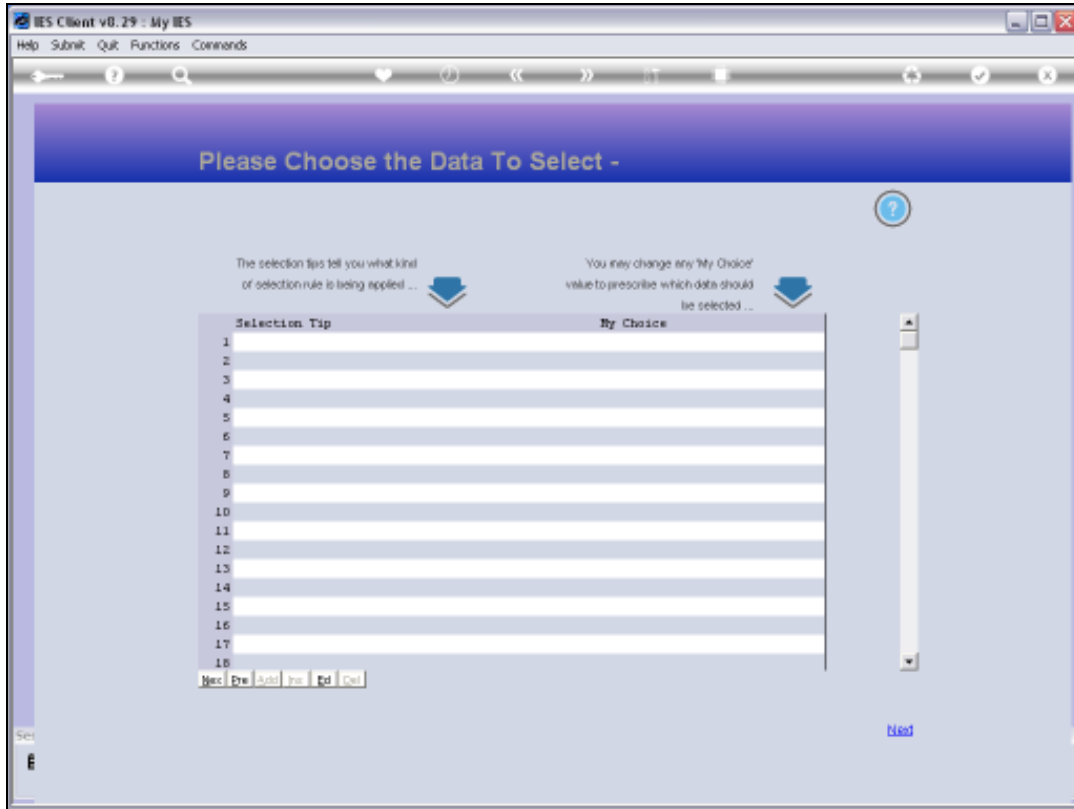
Slide 14

Slide notes: And we may select an appropriate Data Selector. The default object called 'linacs' is the usual one to use.



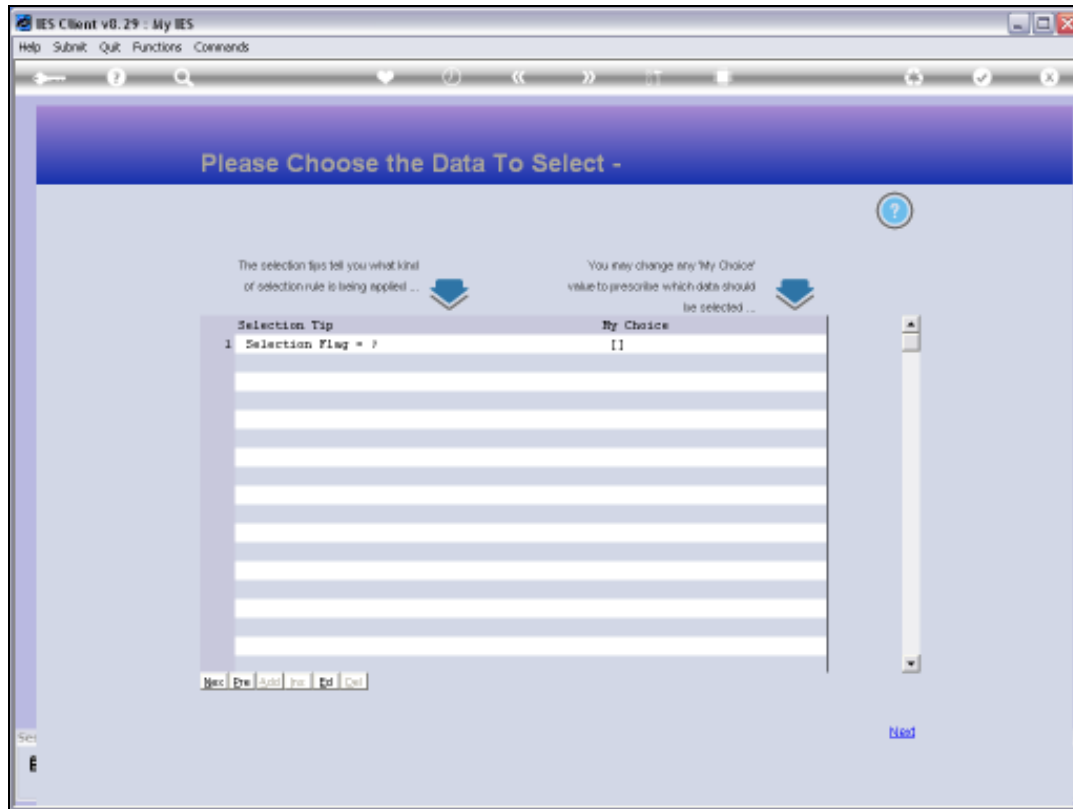
Slide 15

Slide notes:



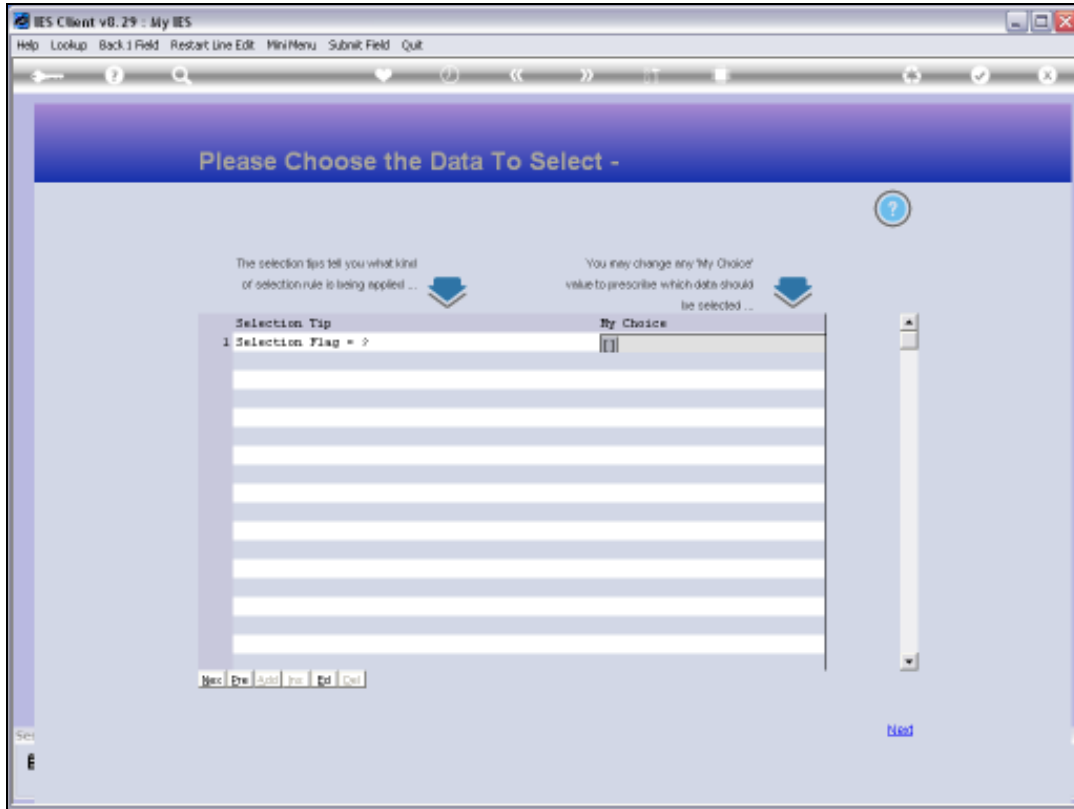
Slide 16

Slide notes:

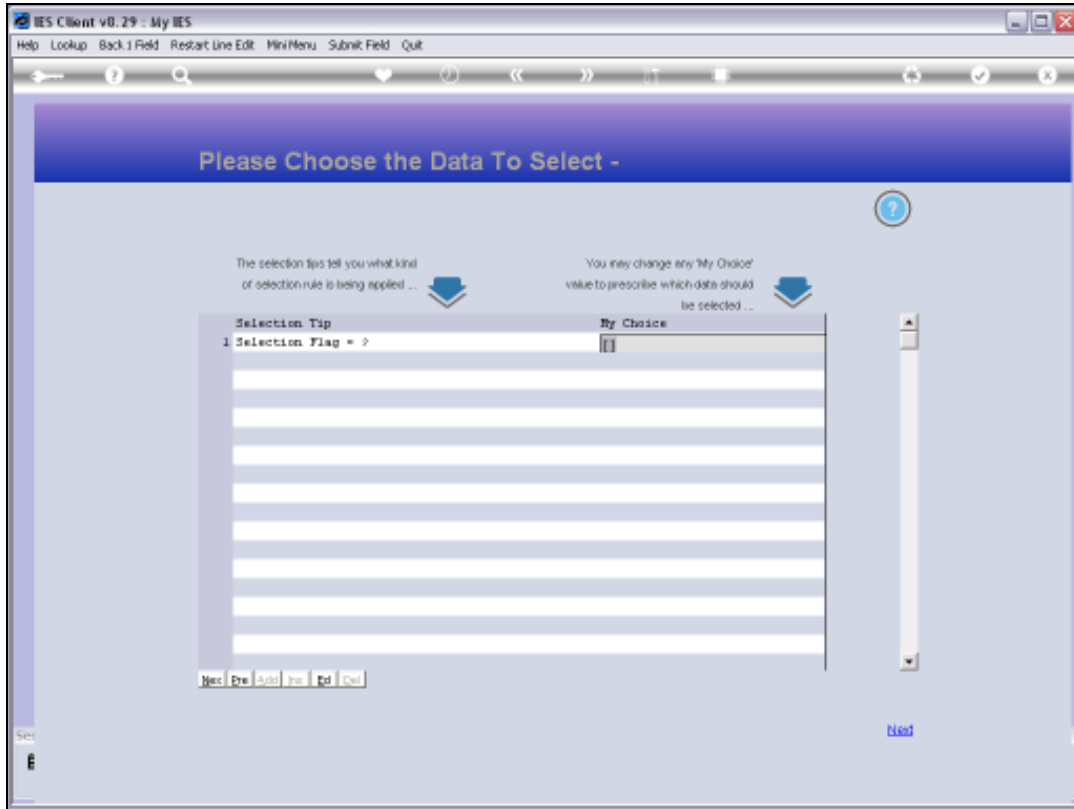


Slide 17

Slide notes: The Selection Flag is what we use on the Linked Account Objects, and in our case, we use "C" for all Creditor Linked Accounts. Therefore we will now select "C".

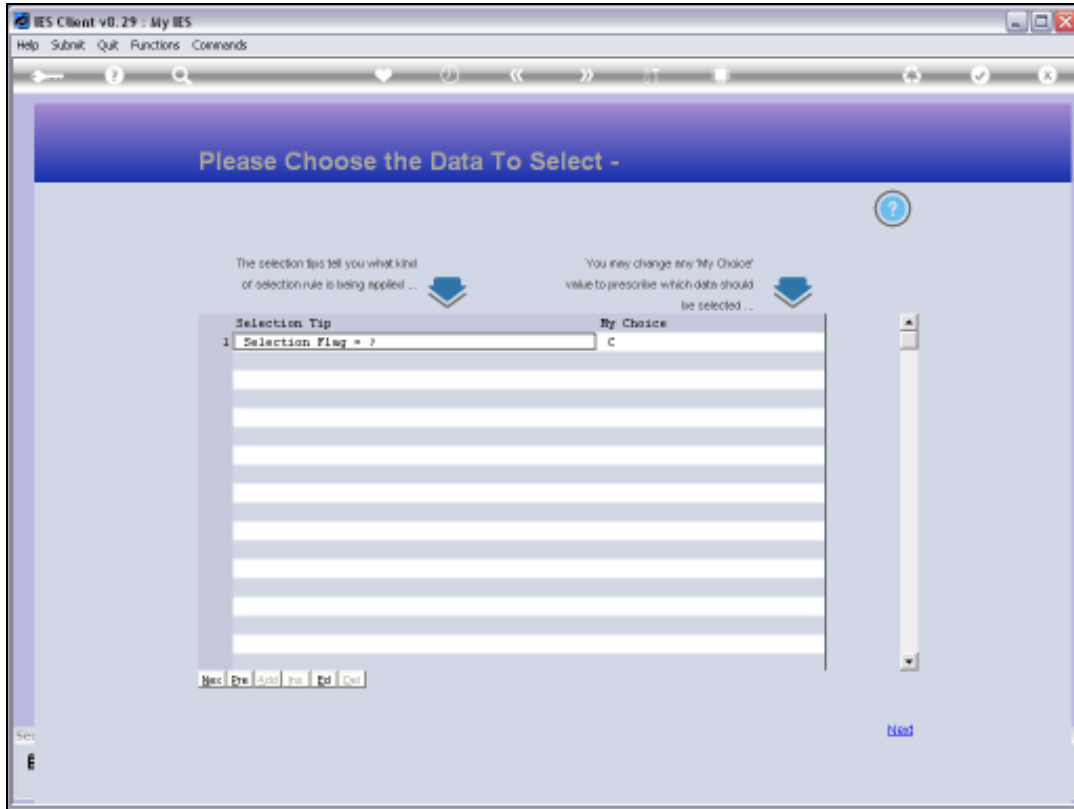


Slide 18
Slide notes:



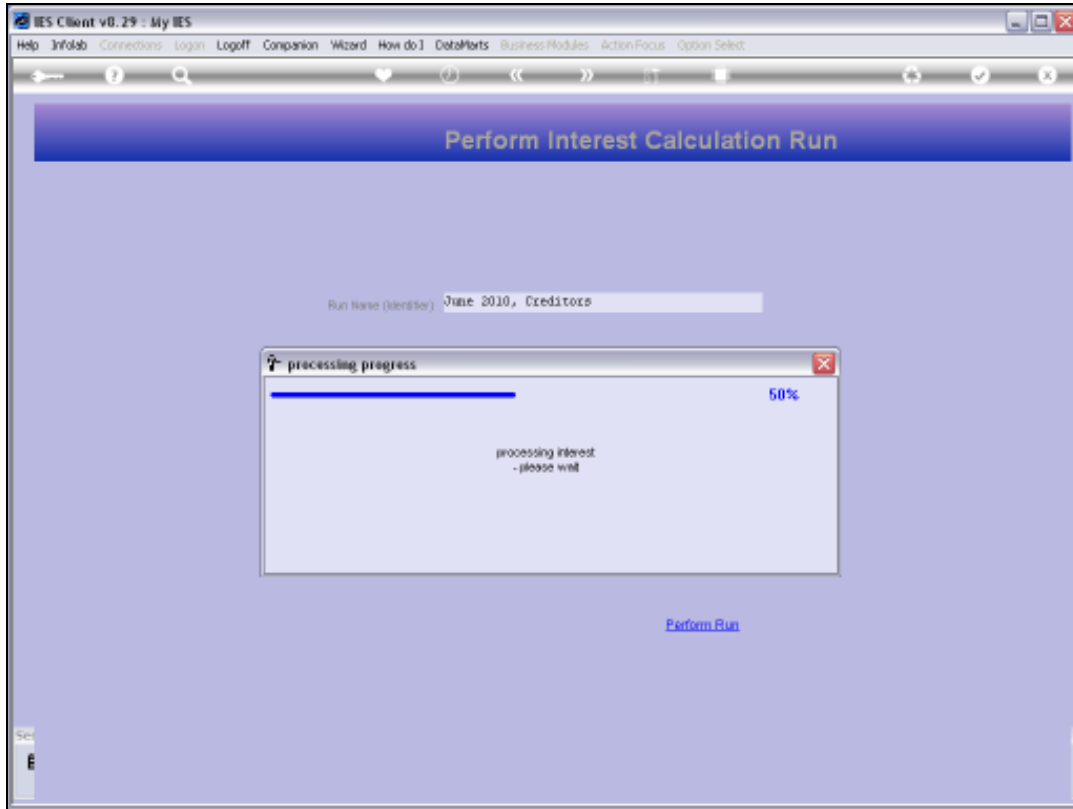
Slide 19

Slide notes:



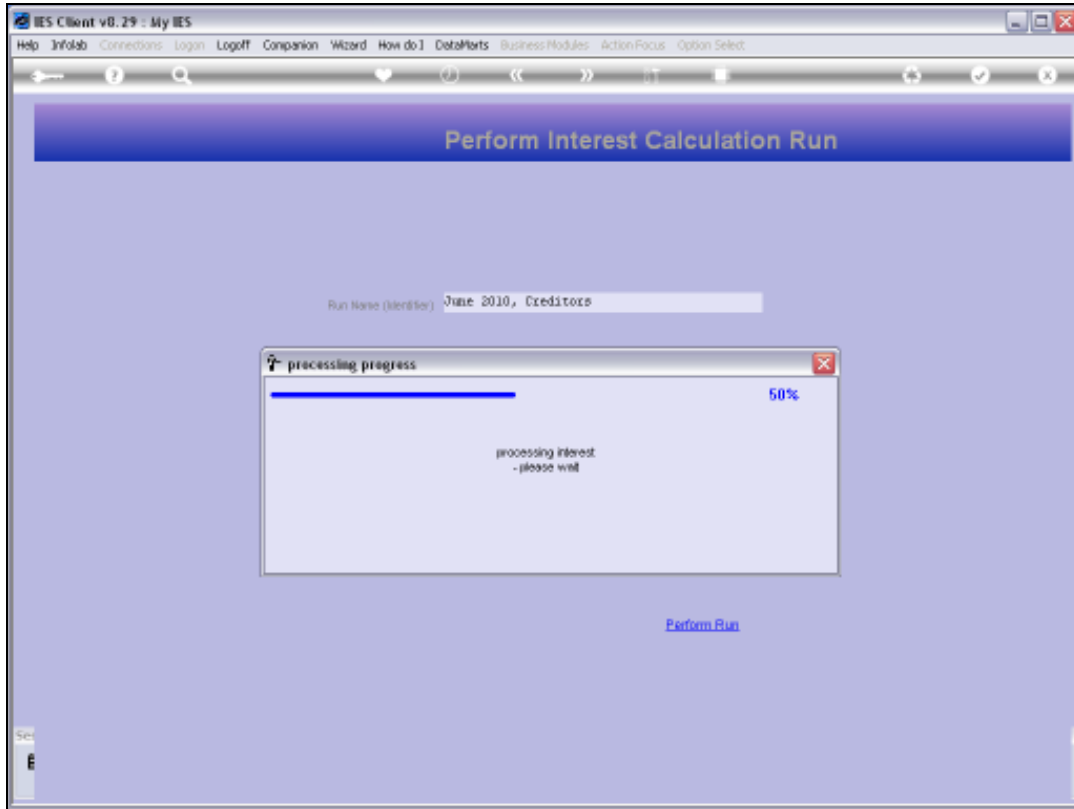
Slide 20

Slide notes:



Slide 21

Slide notes: The system performs the Interest Calculations.



Slide 22

Slide notes:



Slide 23

Slide notes: When the run is complete, we are returned to the menu. Interest Runs may be repeated for the same Period, since the system will recognize where Interest has already been calculated and will not duplicate it. Therefore, there is no danger in selecting the same Accounts more than once in the same Period.