



Slide 1

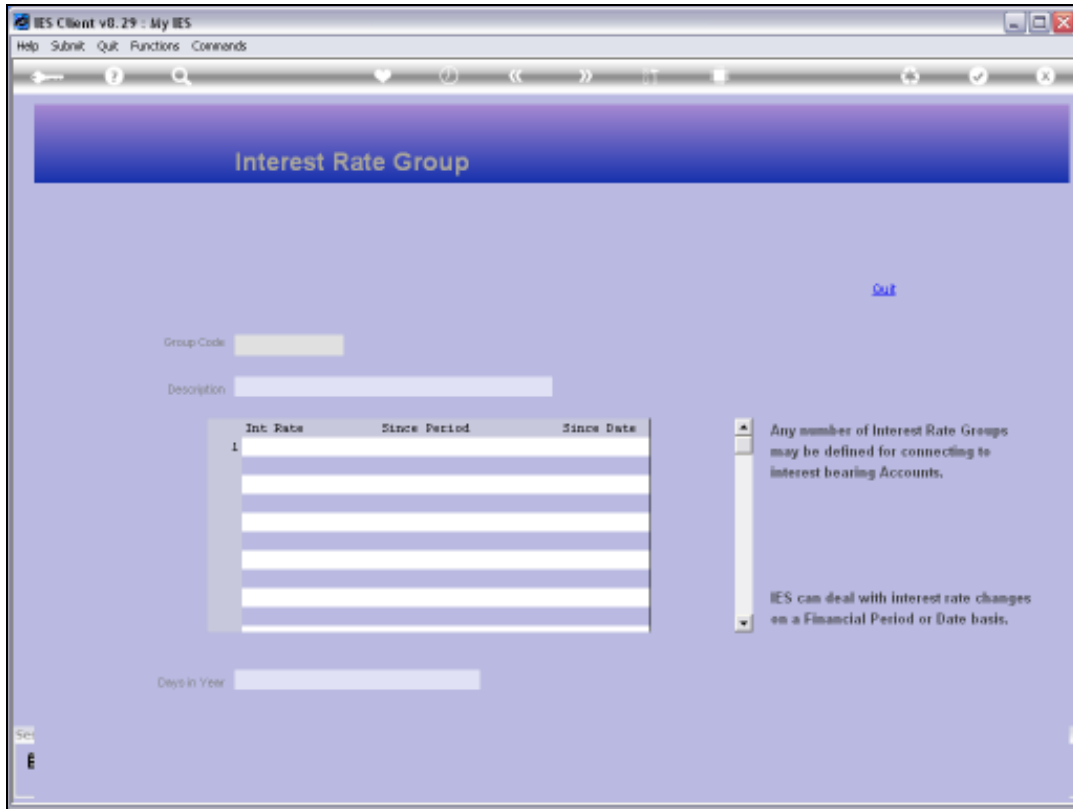
Slide notes: The Interest Linked Accounts menu lead to the options that include a Query of the Interest Rate Groups.



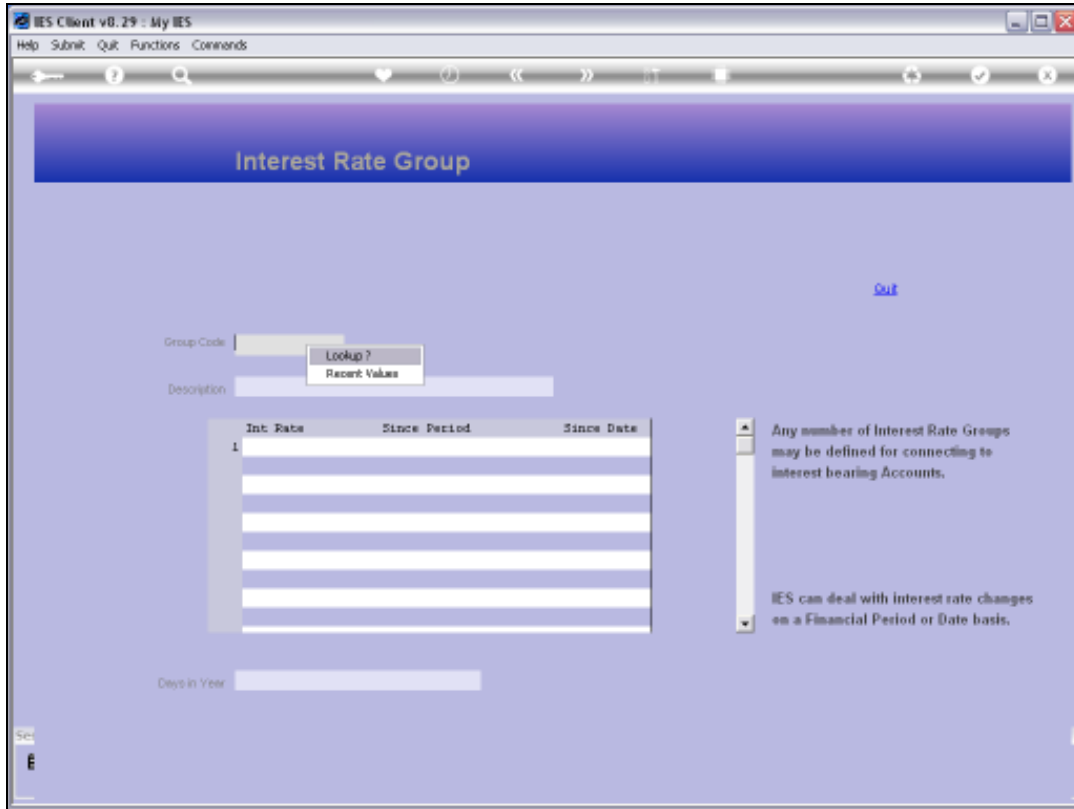
Slide 2
Slide notes:



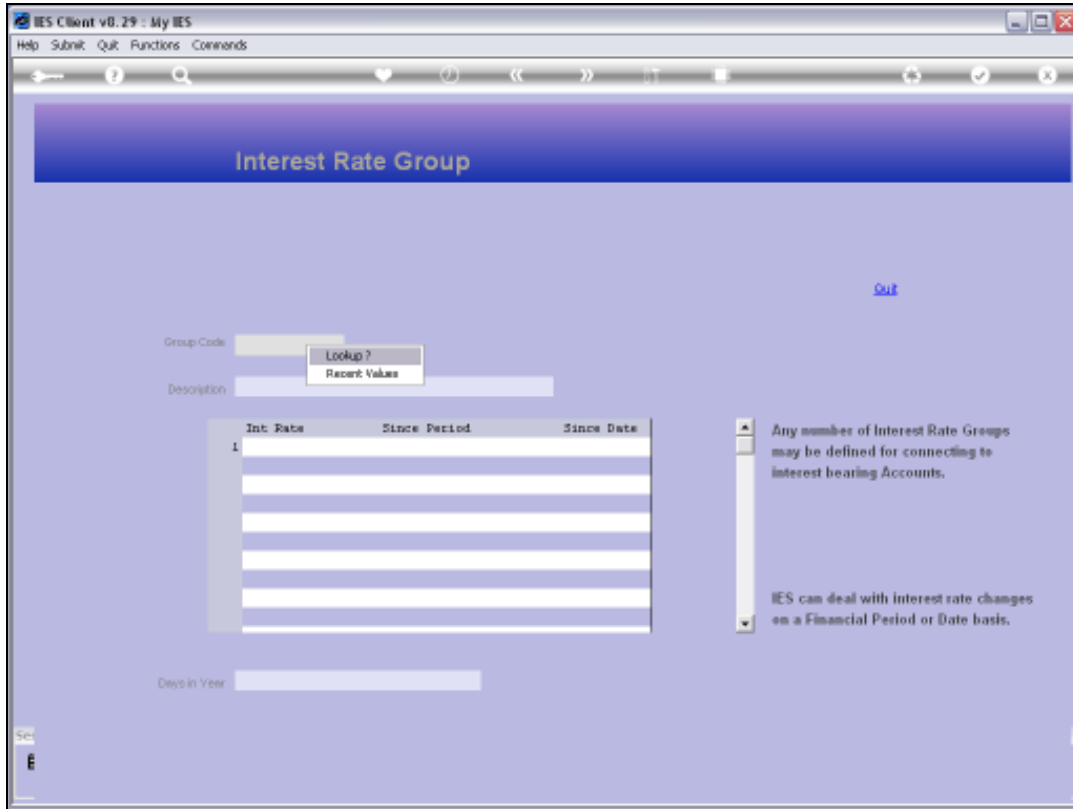
Slide 3
Slide notes:



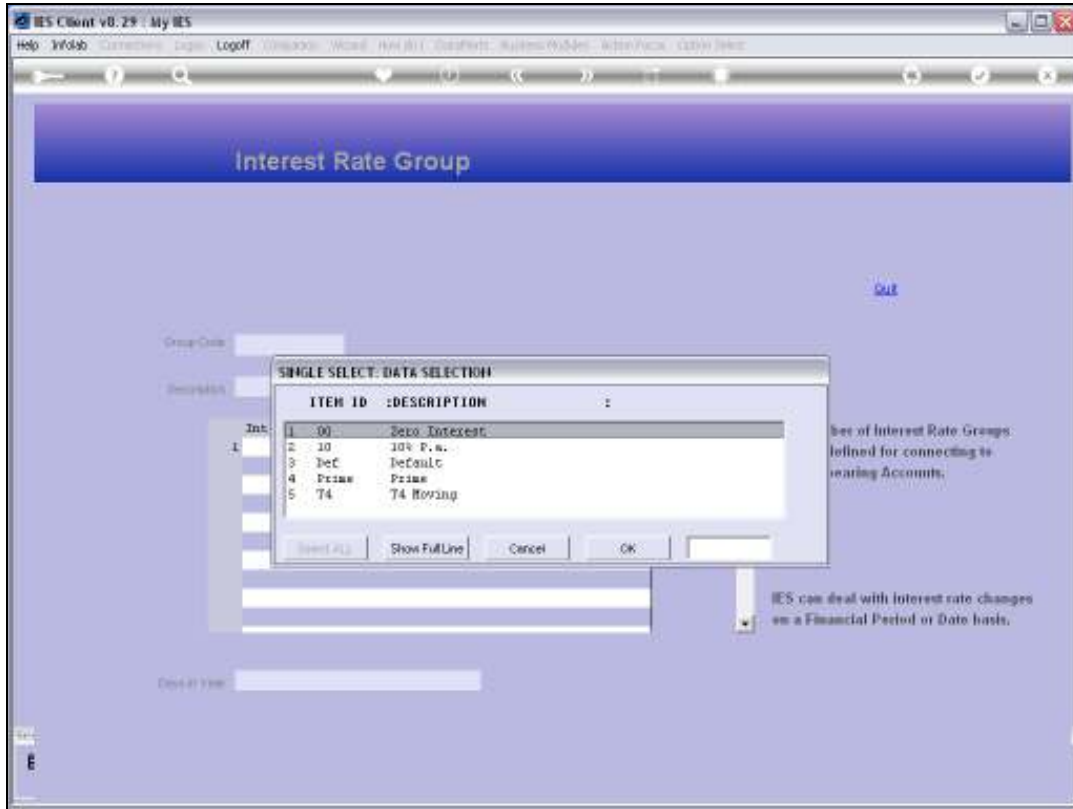
Slide 4
Slide notes:



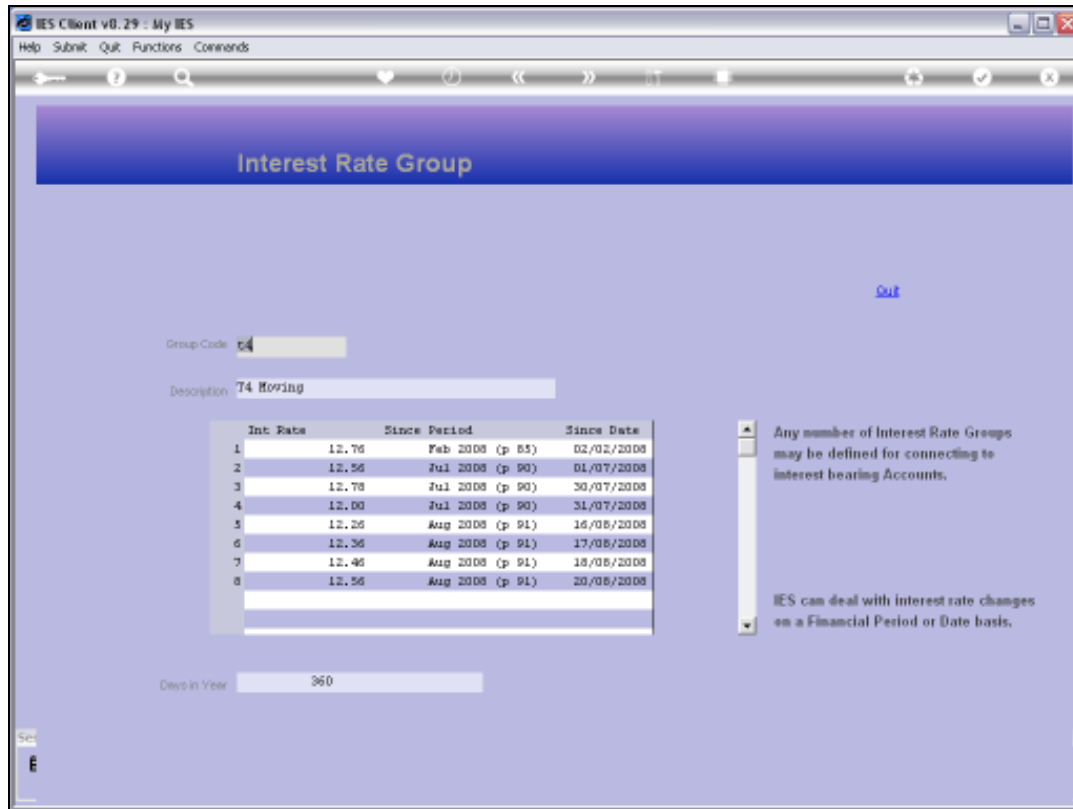
Slide 5
Slide notes:



Slide 6
Slide notes:



Slide 7
Slide notes:



Slide 8

Slide notes: With this option, any Interest Rate record may be queried, but no changes are allowed. Therefore, the option is intended for Users who may need to query the Interest Rate details but who do not have update access rights to make changes.



Slide 9
Slide notes:



Slide 10
Slide notes: