



Slide 1

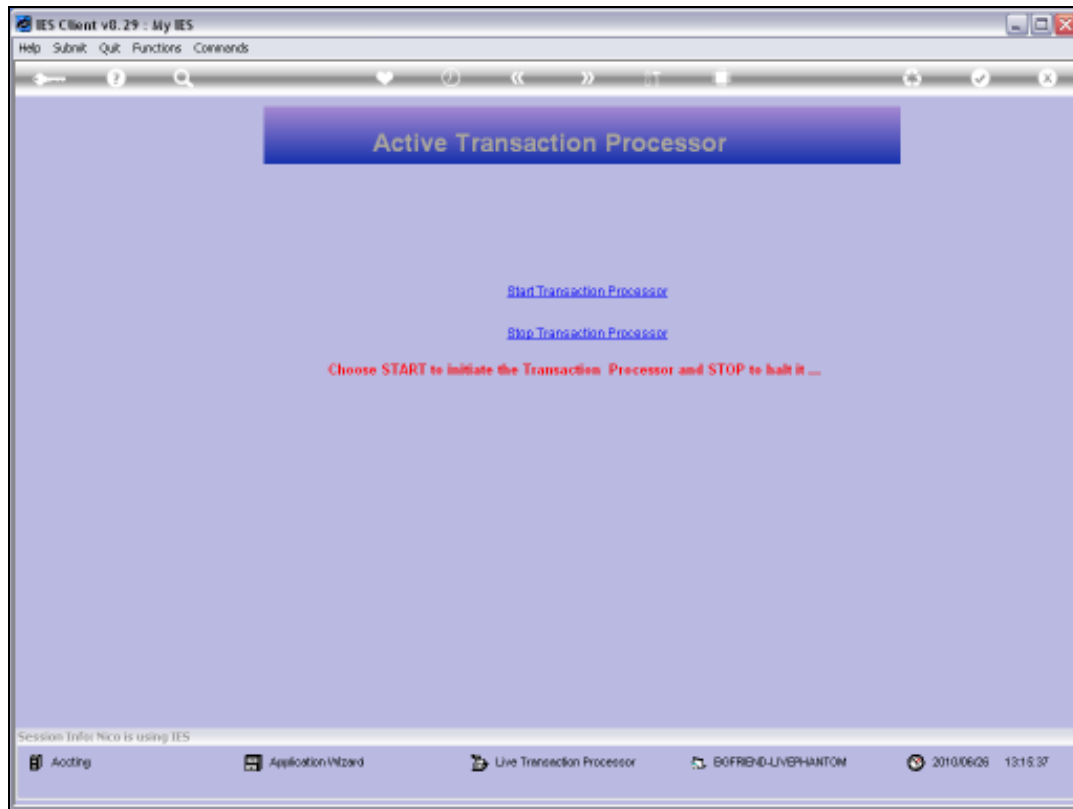
Slide notes: The LIVE Transaction Processor is managed from the Transaction Control menu.



Slide 2  
Slide notes:

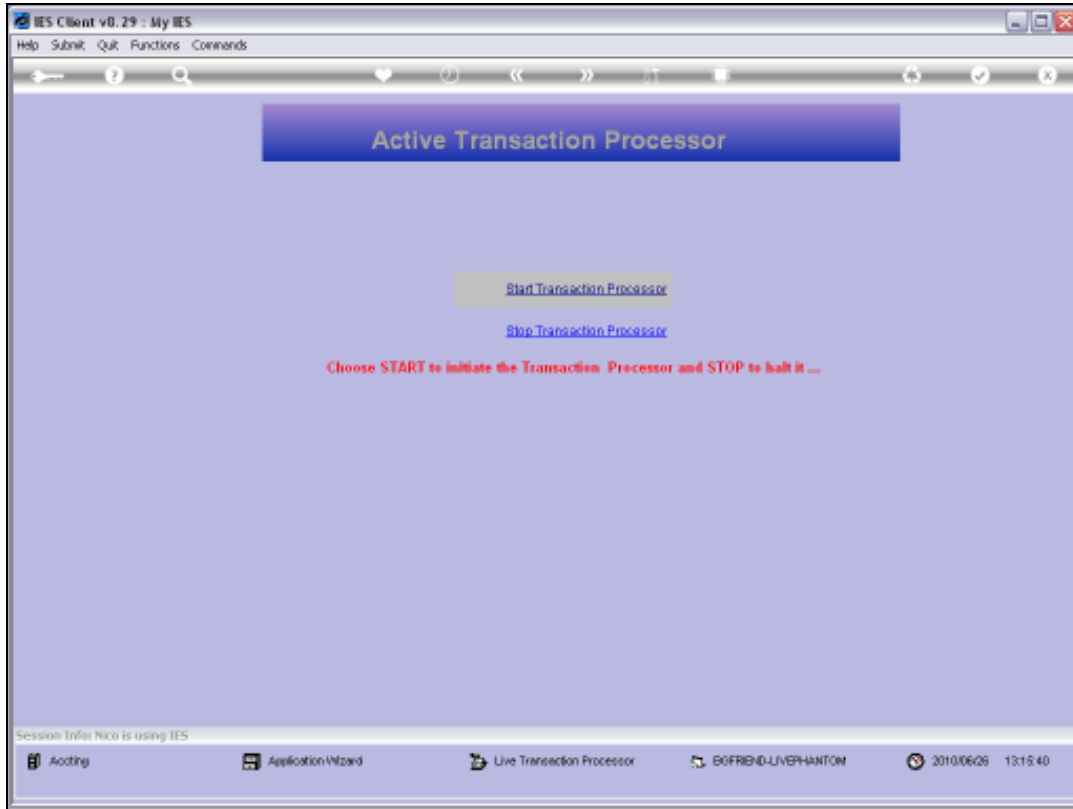


Slide 3  
Slide notes:

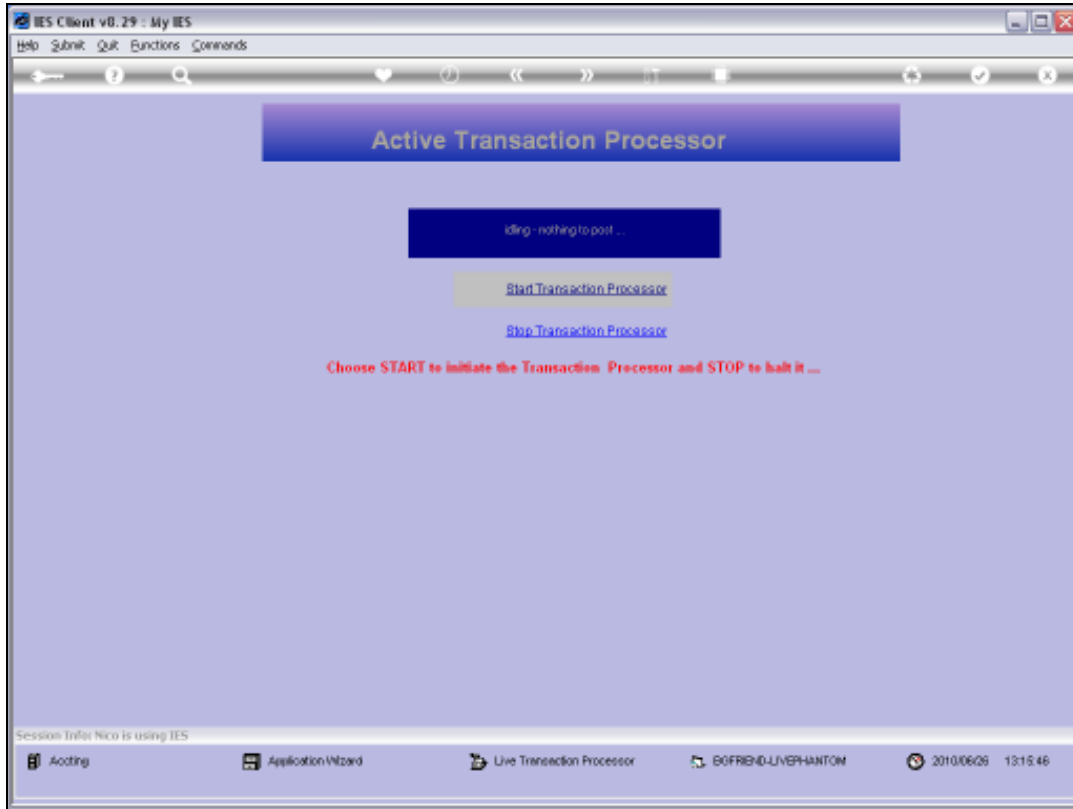


#### Slide 4

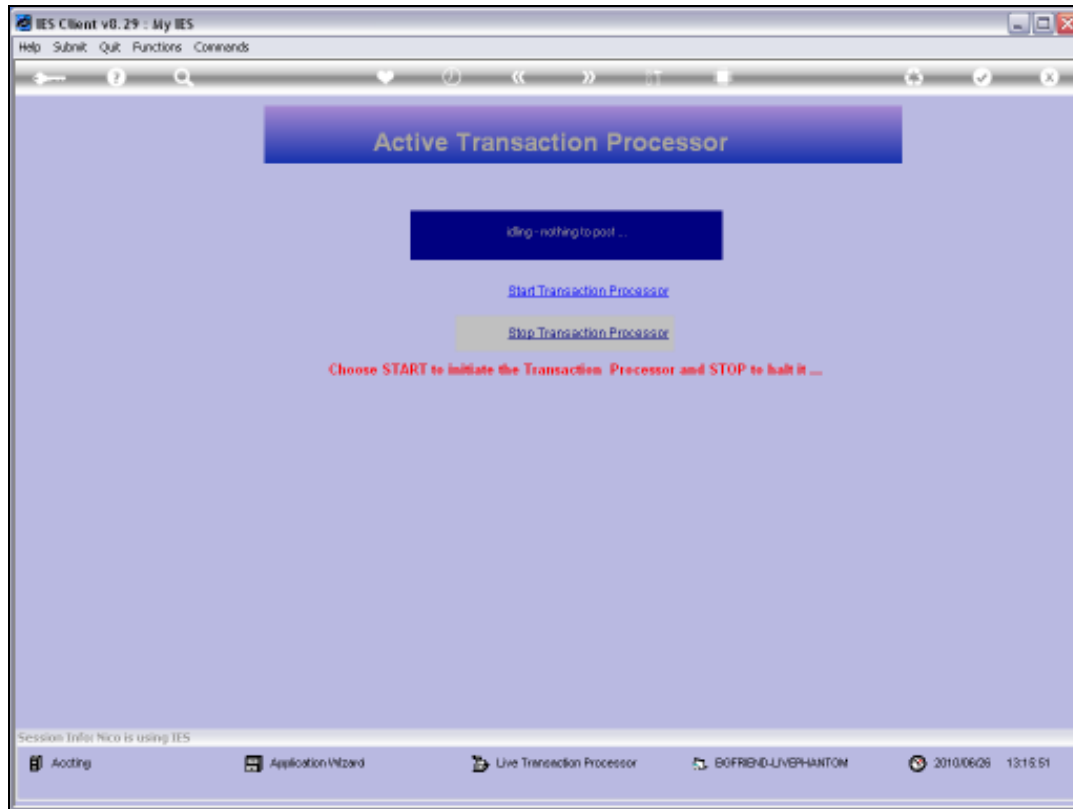
Slide notes: If we use the LIVE Transaction Processor, then we start 1 instance of it in a Business Datamart. Once we choose 'Start Transaction Processor' the system will automatically change the mode to 'pass to queue' even if it is currently set to 'immediate', and once this TP is running, it will post Transactions as they arrive system-wide and are offered to the Queue.



Slide 5  
Slide notes:



Slide 6  
Slide notes:



## Slide 7

Slide notes: The TP will display a status at all times, i.e. 'nothing to post' or the details of what is being posted, etc. Before the system database service is stopped for a system shutdown, the TP should be stopped using the 'stop' option that is provided. Until such time, the session should be left running by itself and may be minimized.



Slide 8  
Slide notes: