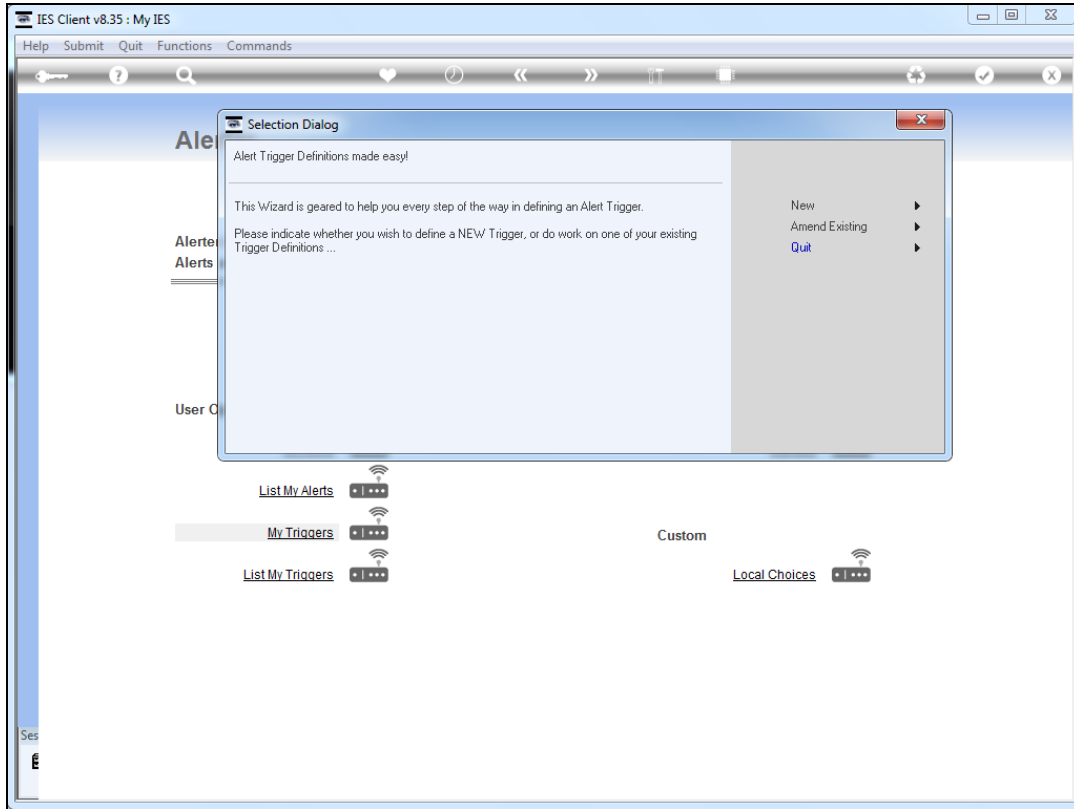
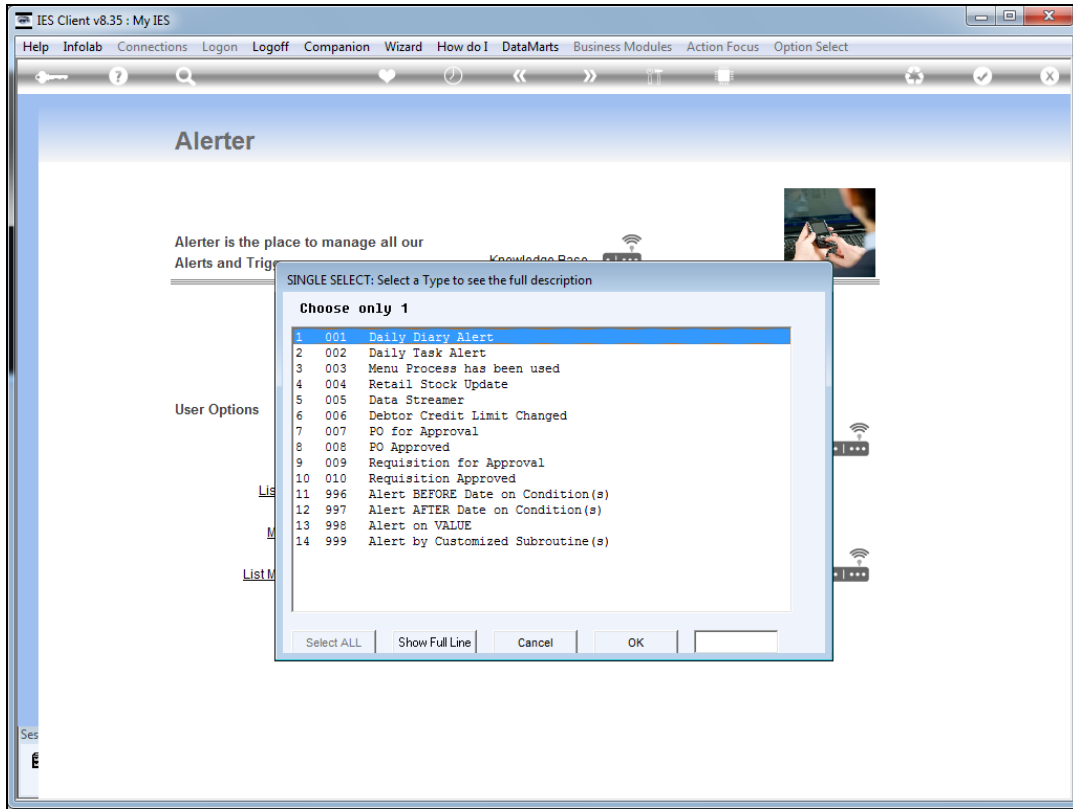


Slide 1

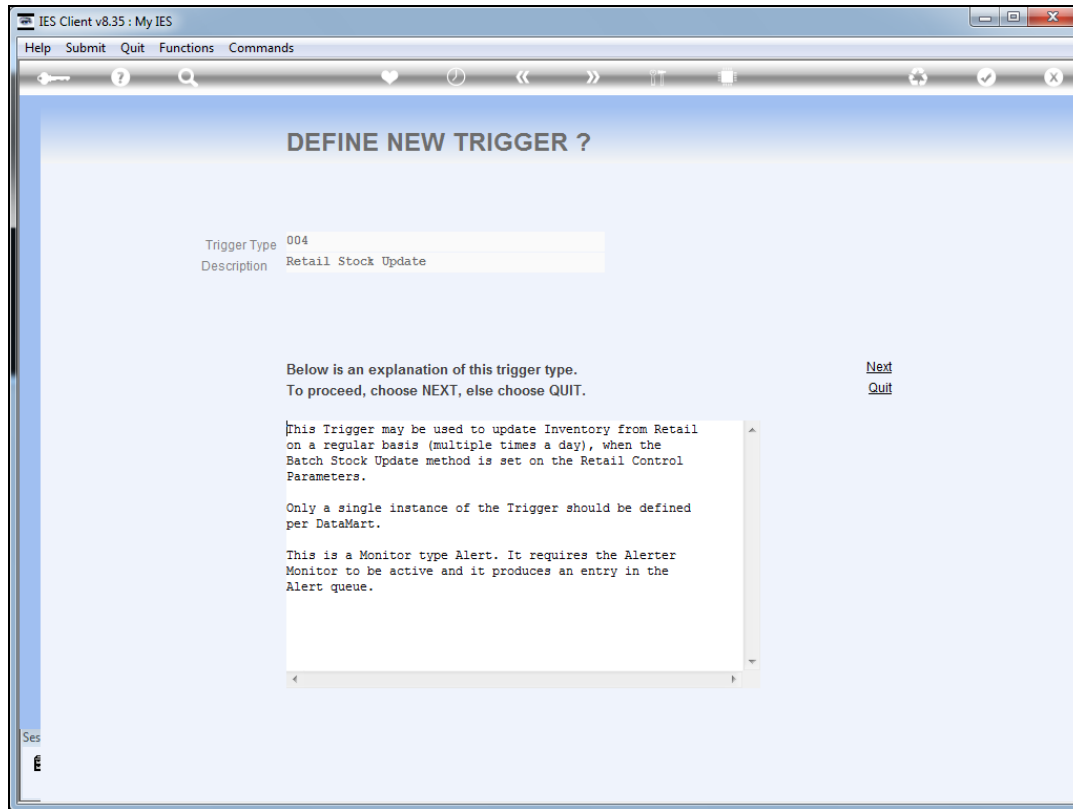
Slide notes: We will now do an example of the Retail Stock Update trigger.



Slide 2
Slide notes:

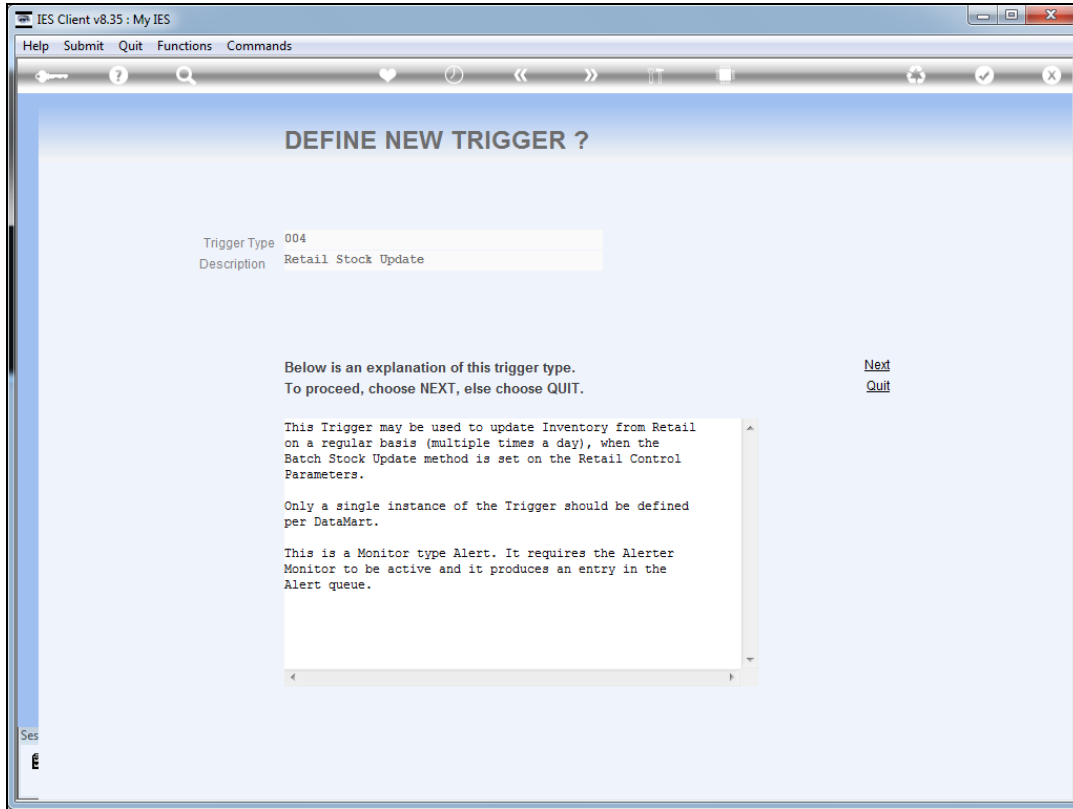


Slide 3
Slide notes:

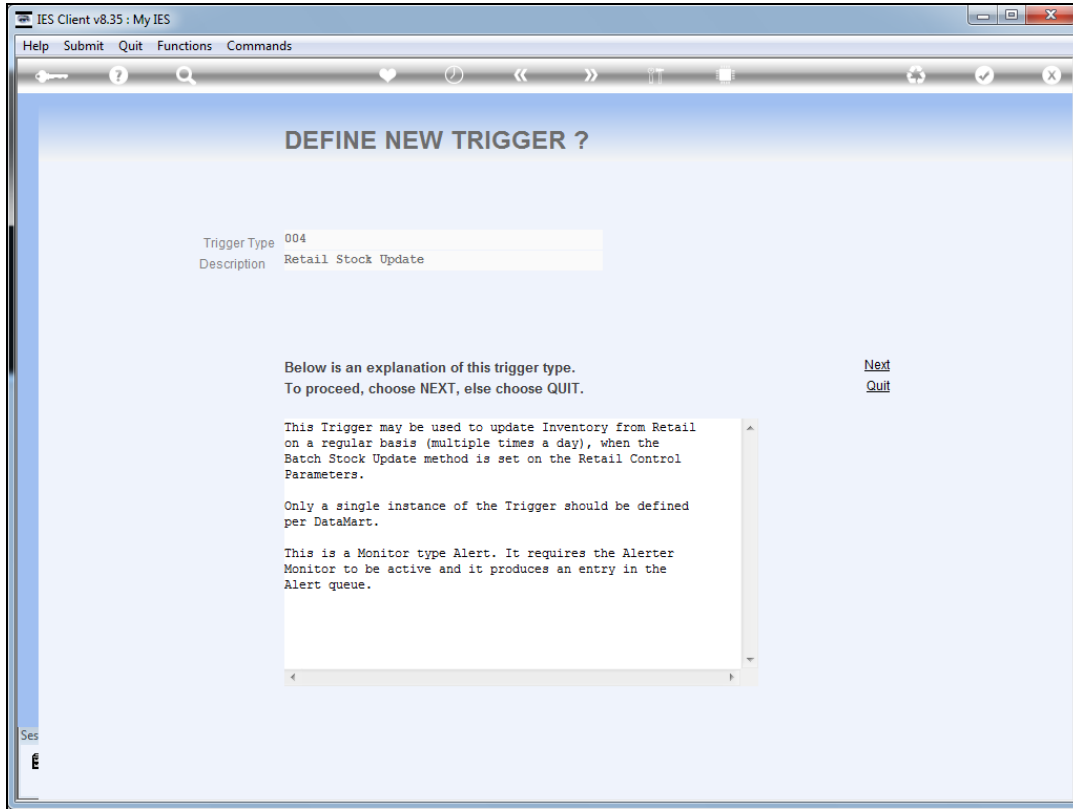


Slide 5

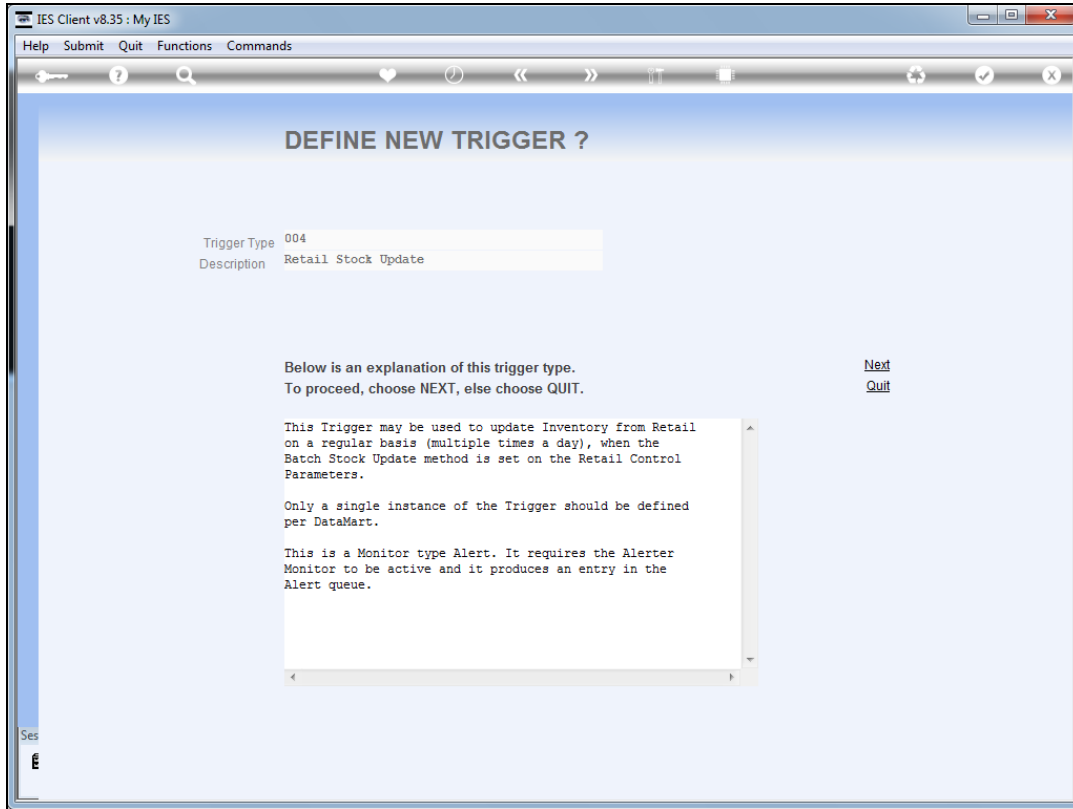
Slide notes: When the Batch Update is set for Stock updates from Retail, as opposed to real-time updates, then this Trigger may be used to tell the system when to perform automatic updates. As such, it is work scheduling rather than an Alert trigger, in this case.



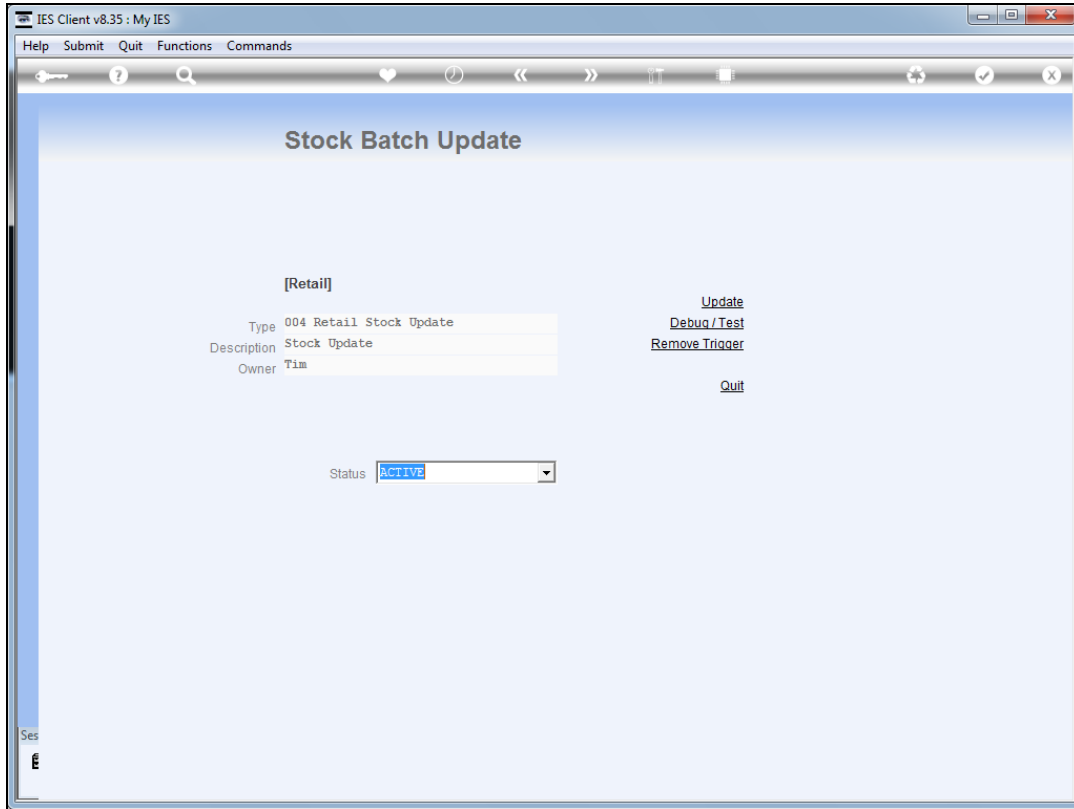
Slide 6
Slide notes:



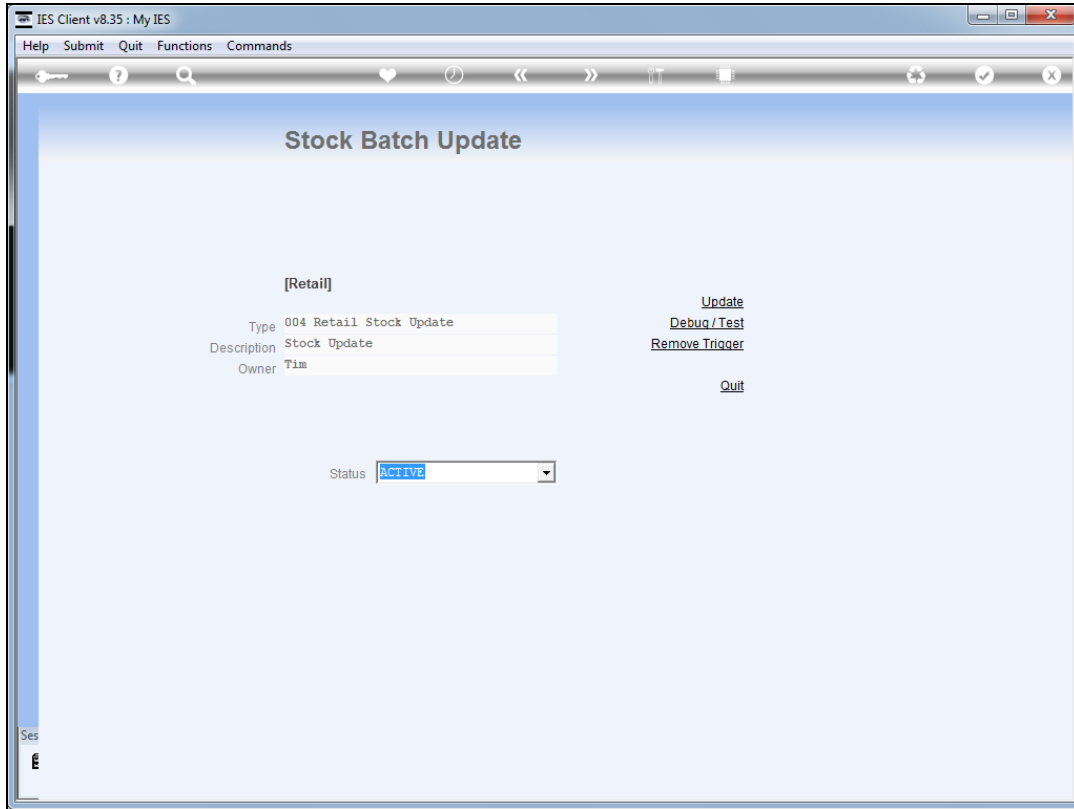
Slide 7
Slide notes:



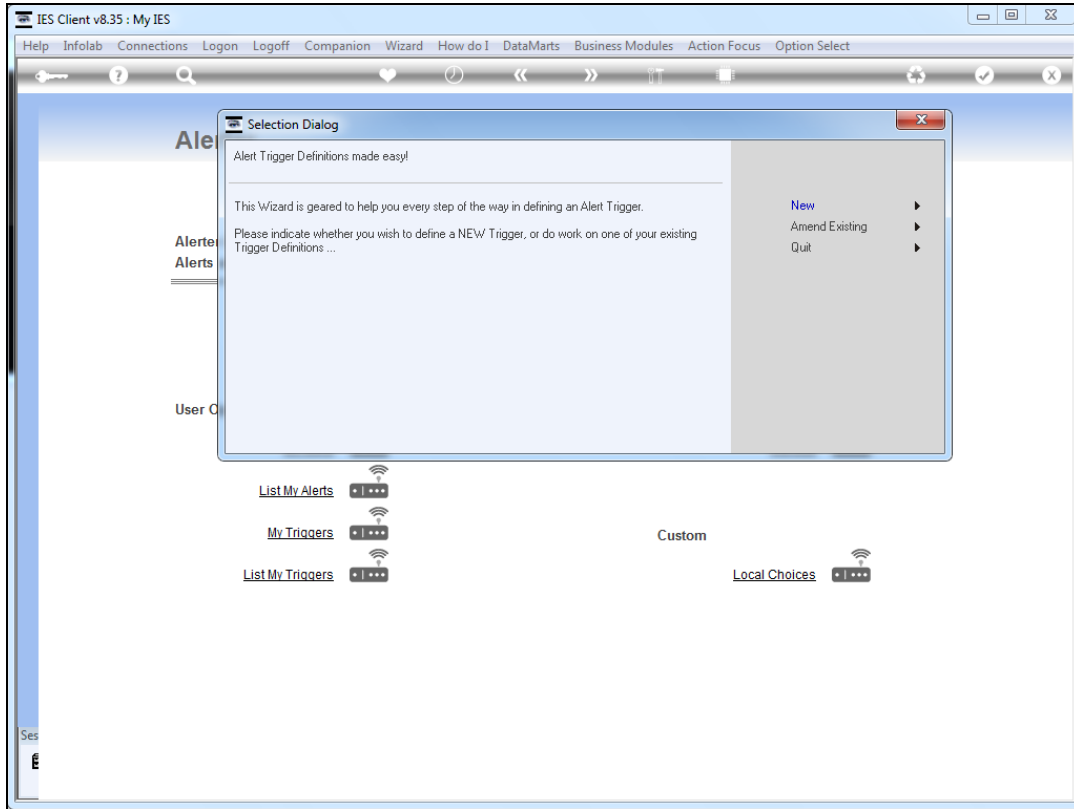
Slide 8
Slide notes:



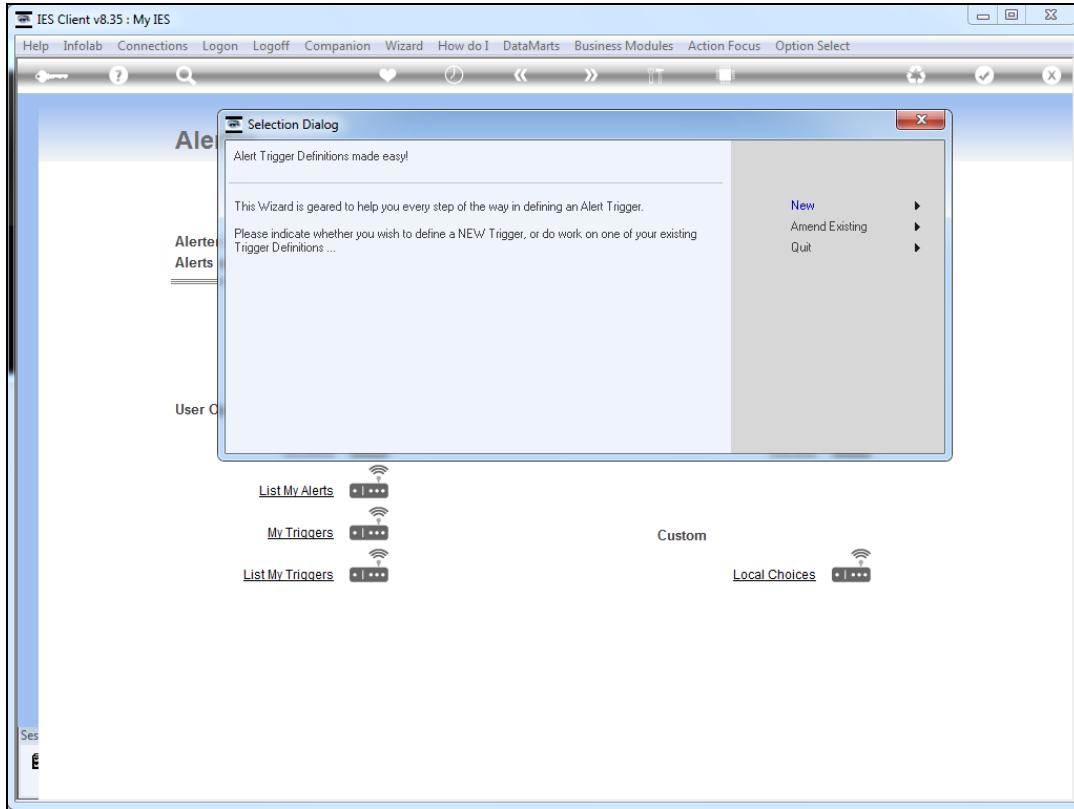
Slide 9
Slide notes:



Slide 10
Slide notes:



Slide 11
Slide notes:



Slide 12
Slide notes: