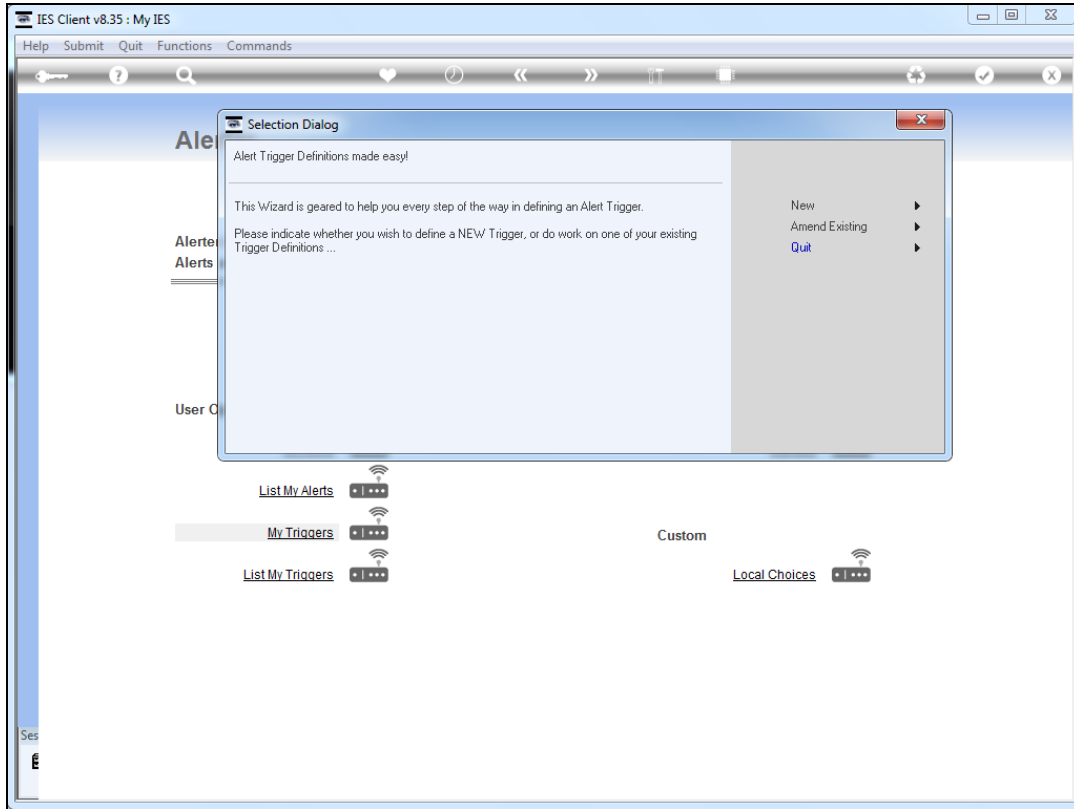
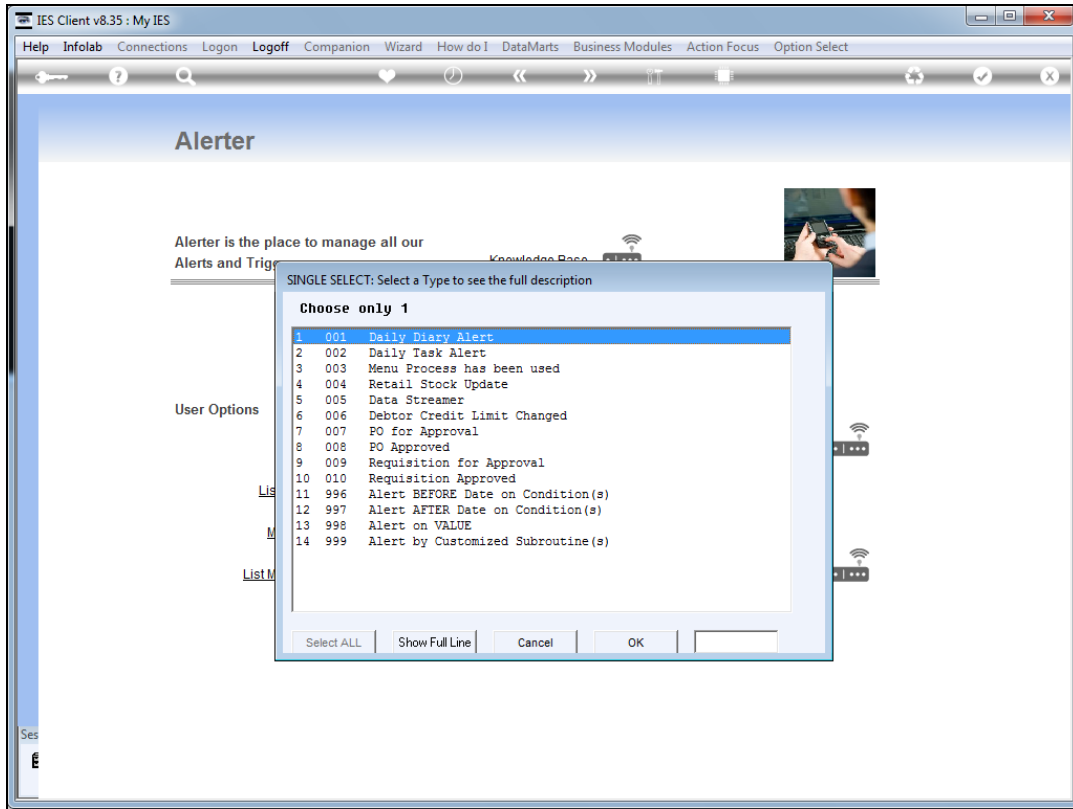


Slide 1

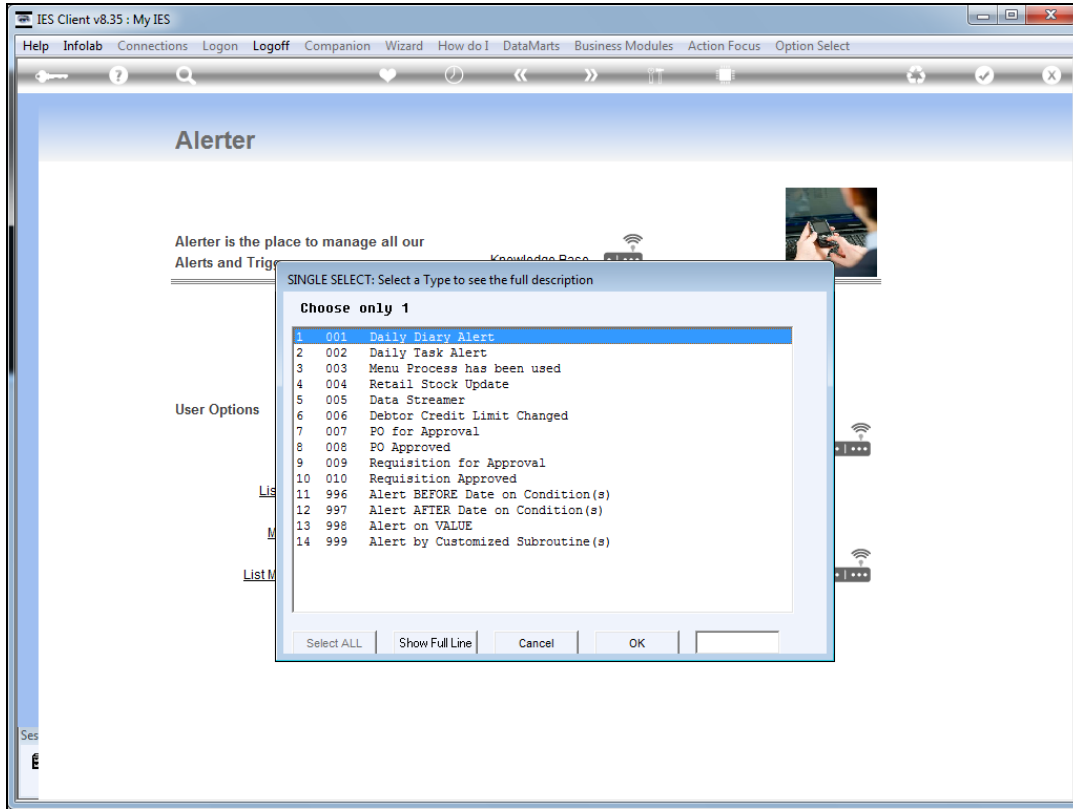
Slide notes: We will now do an example of a Trigger for a Data Streamer to feed IES Knowledge.



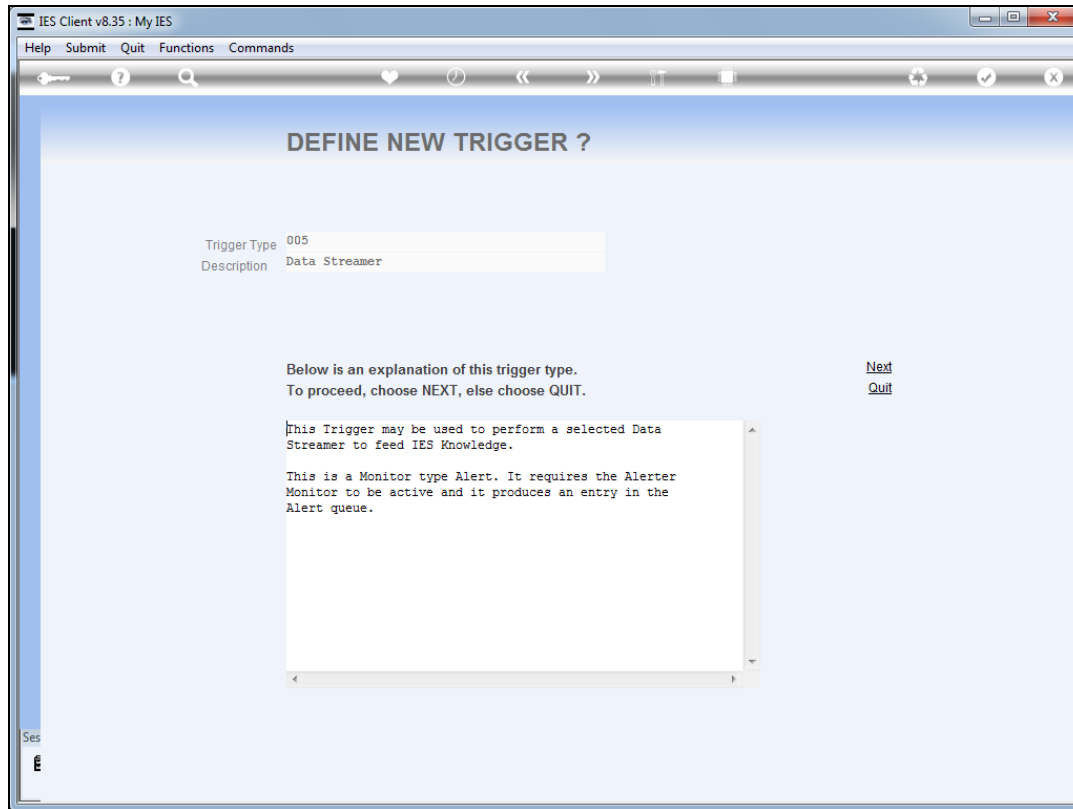
Slide 2
Slide notes:



Slide 3
Slide notes:

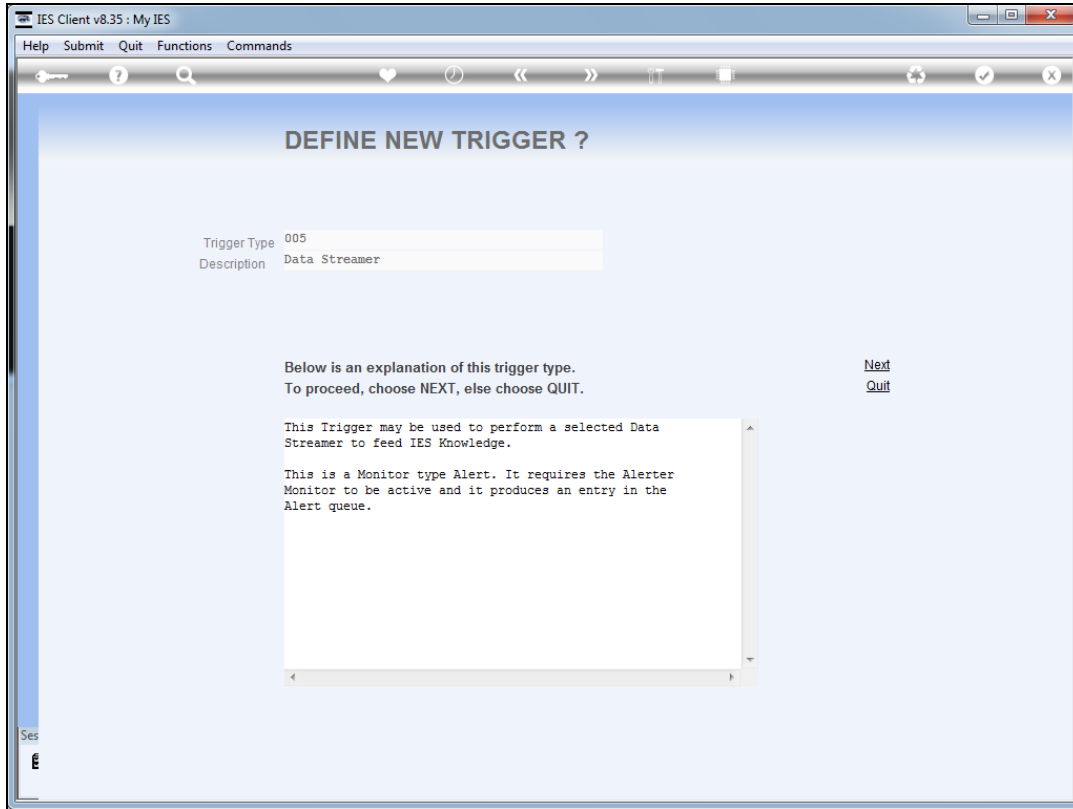


Slide 4
Slide notes:

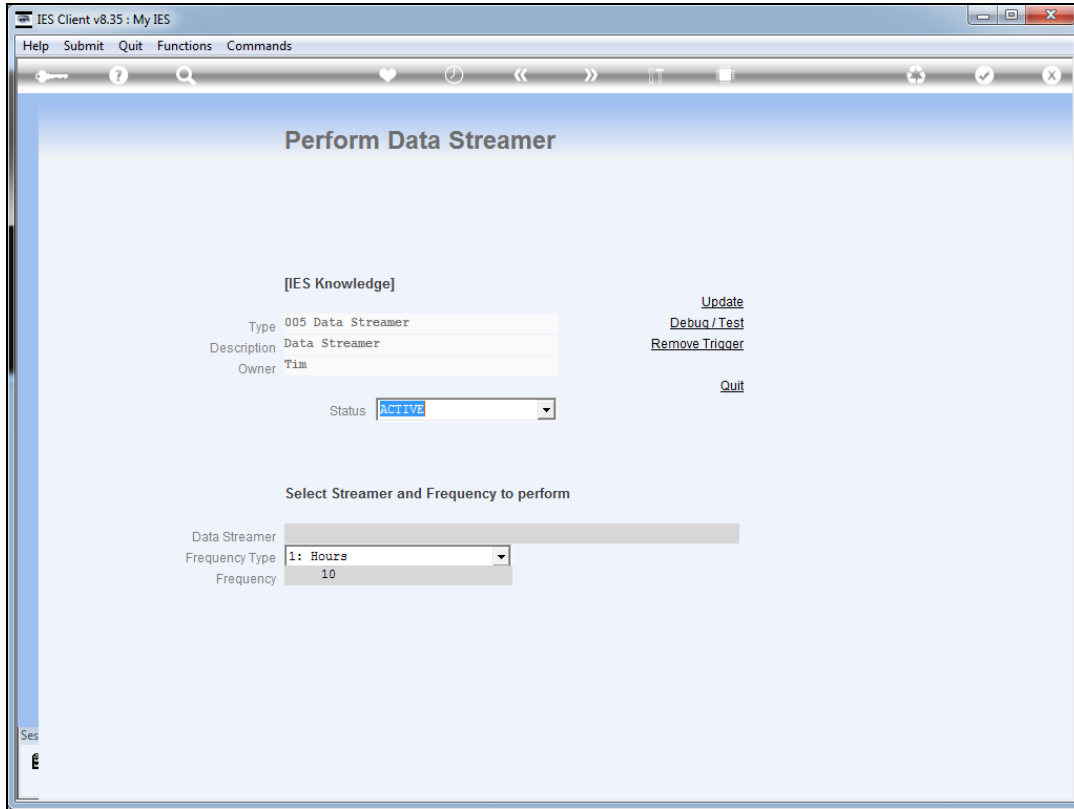


Slide 5

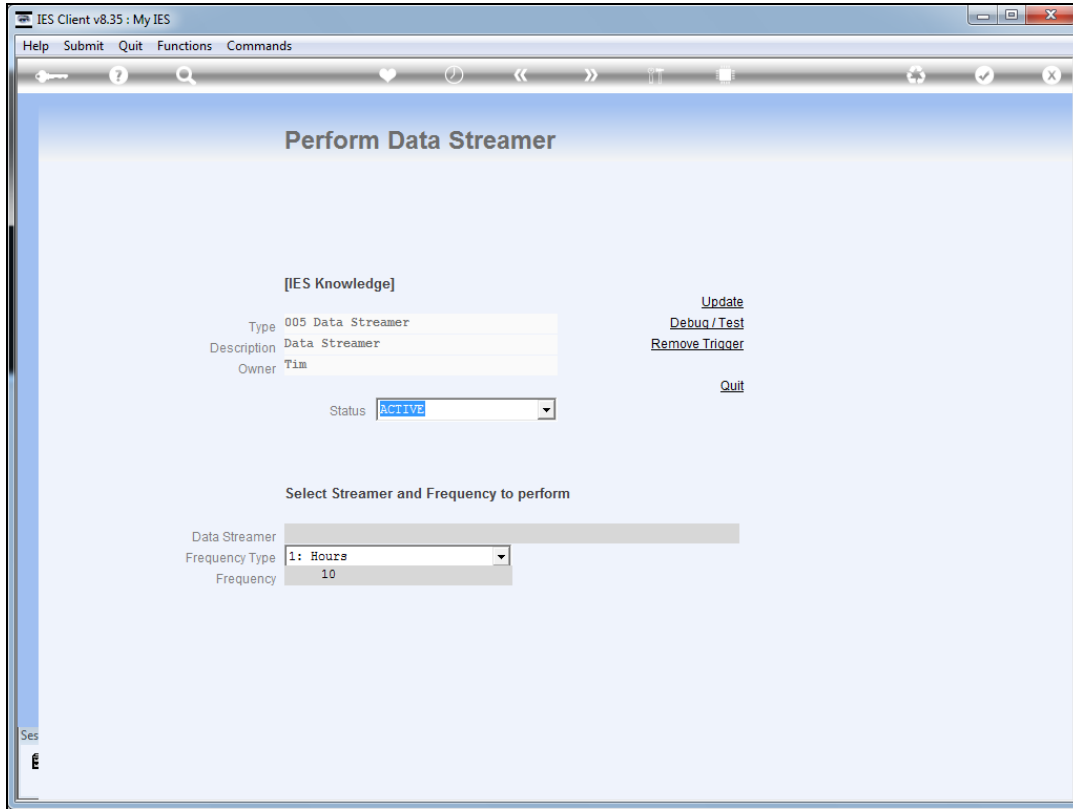
Slide notes: This is not a usual alert. Instead, it is a trigger for the Alerter Monitor to feed data through to an external source, e.g. IES Knowledge.



Slide 6
Slide notes:

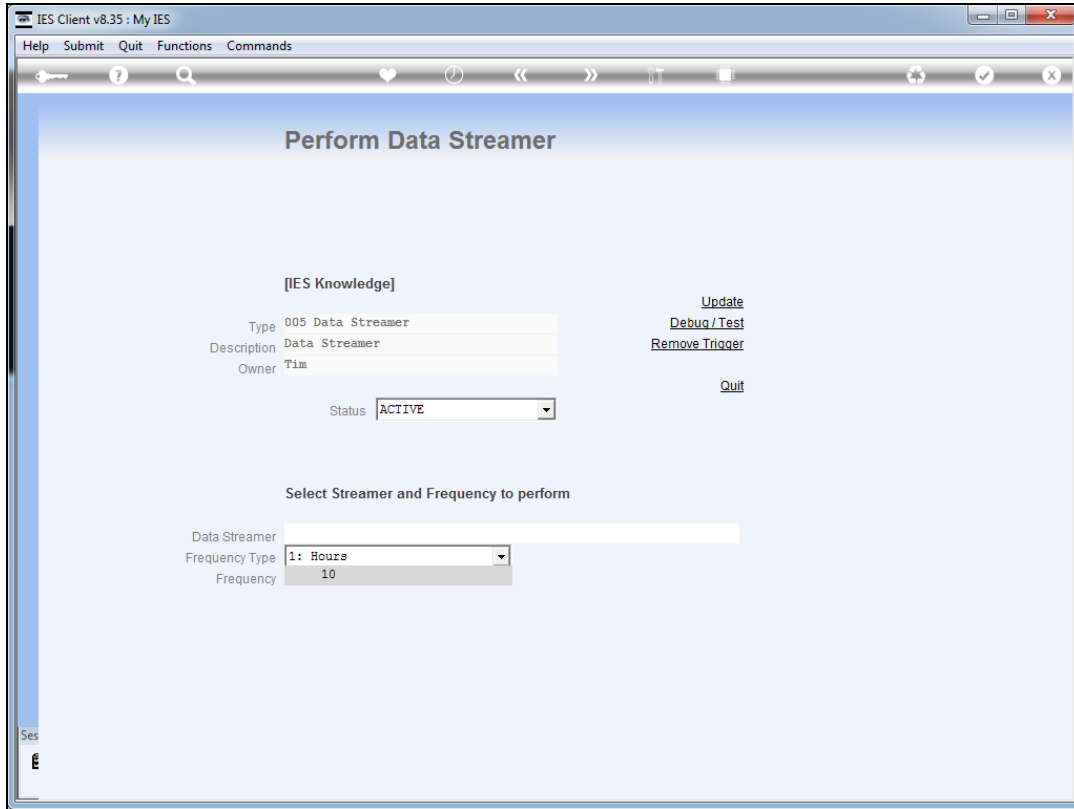


Slide 7
Slide notes:

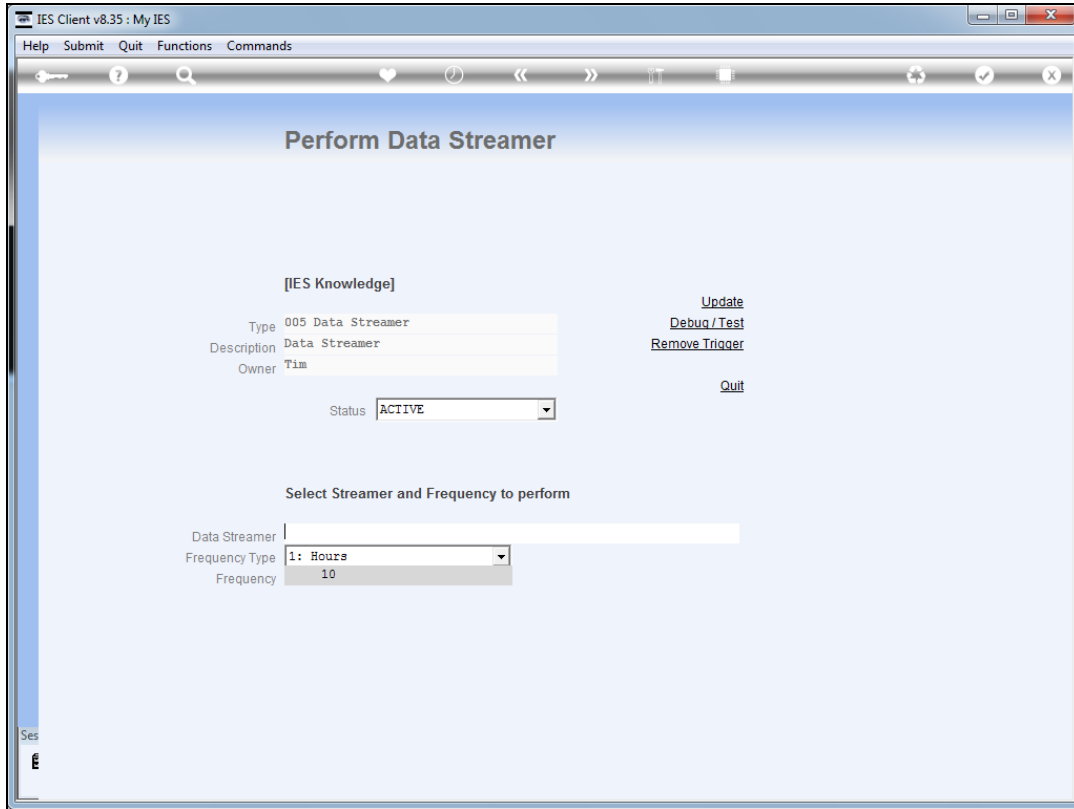


Slide 8

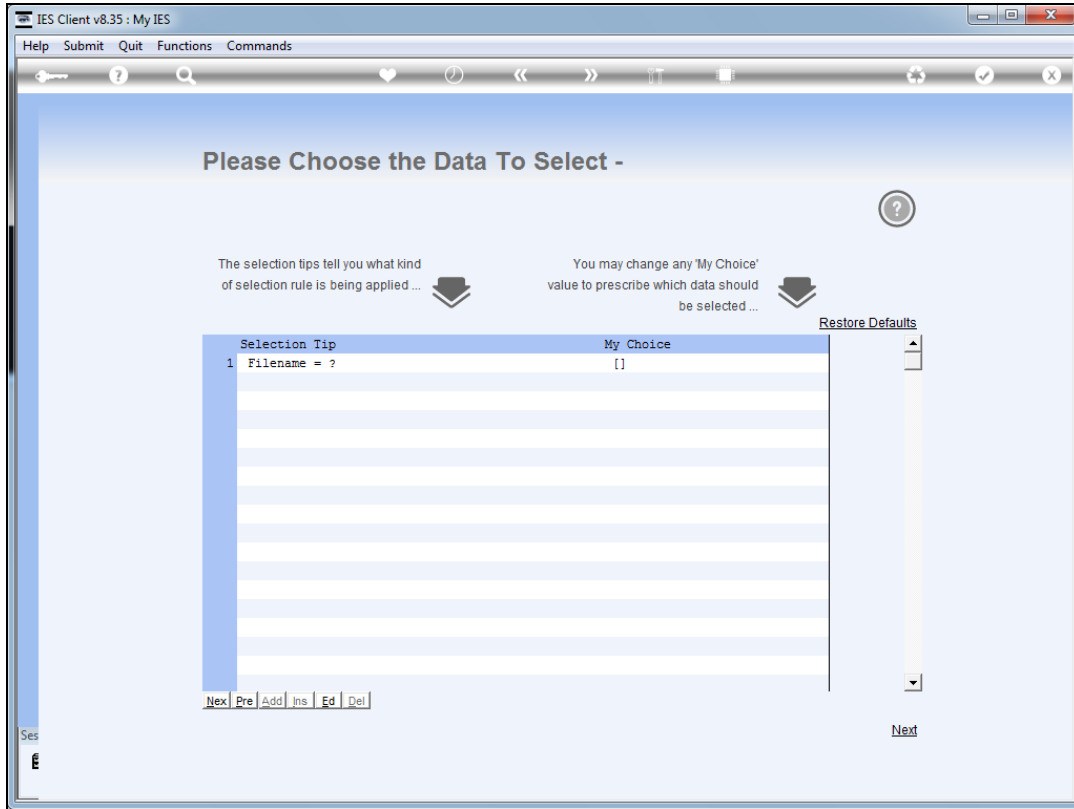
Slide notes: We need to select the Data Streamer to perform, and it must be already defined at the Data Streamers in Business Objects.



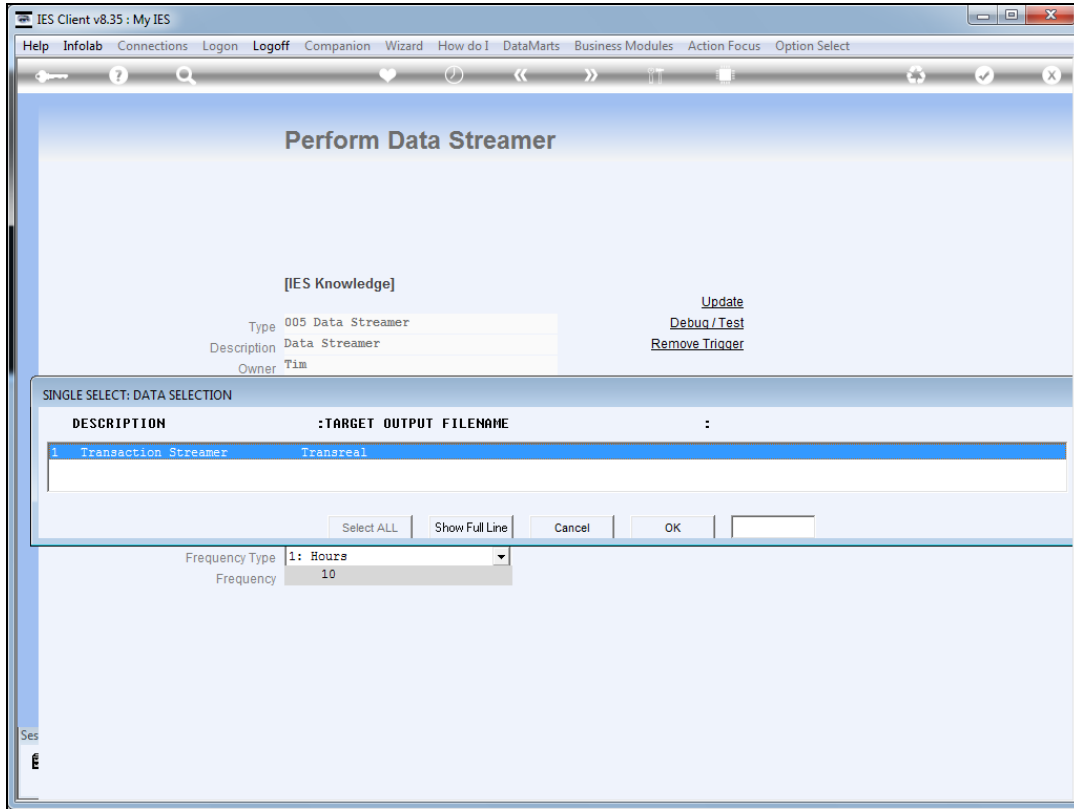
Slide 9
Slide notes:



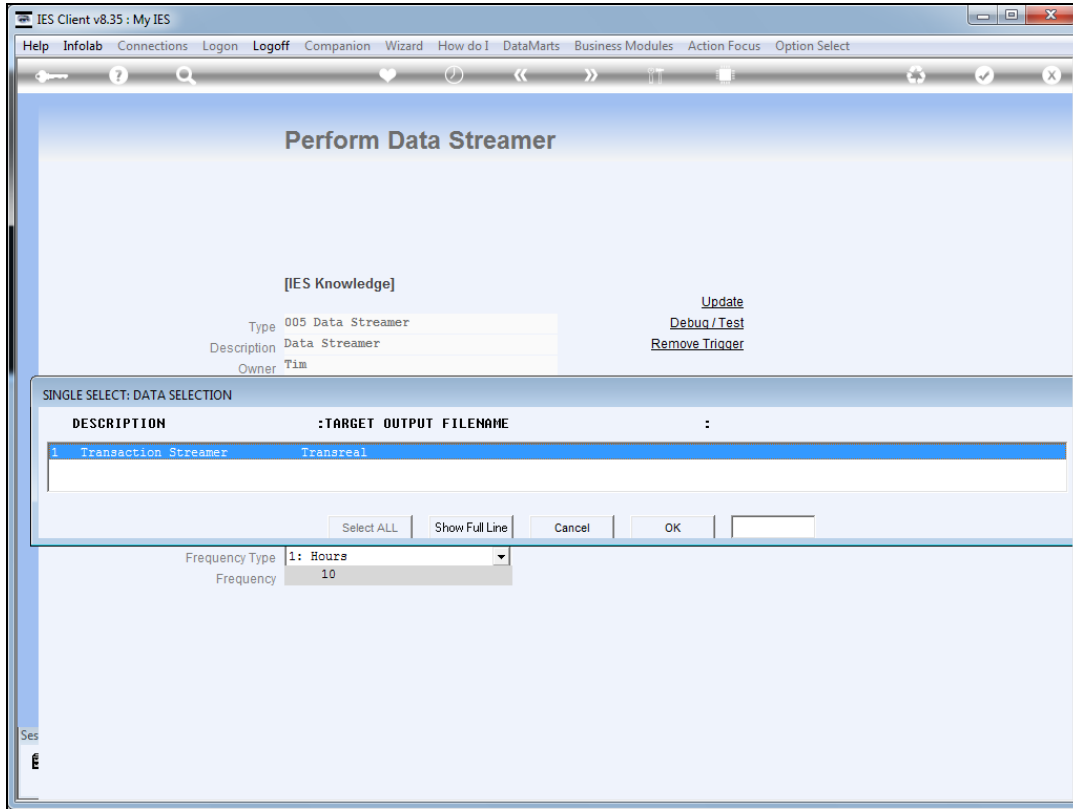
Slide 10
Slide notes:



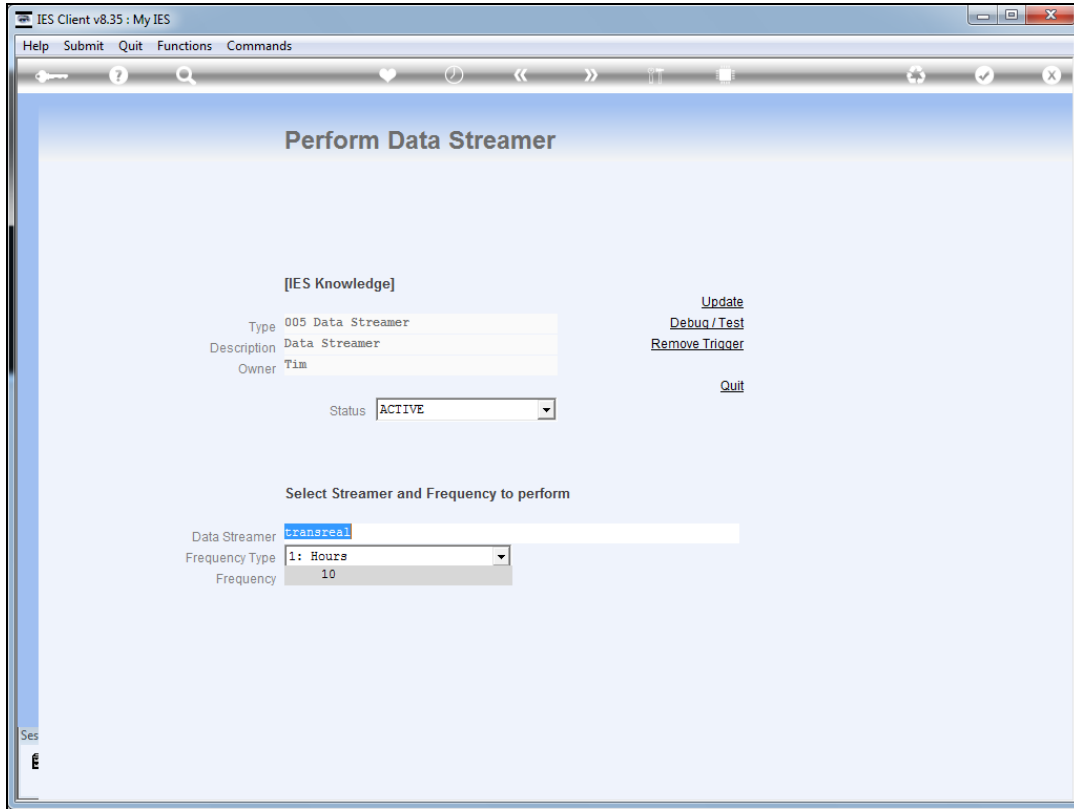
Slide 11
Slide notes:



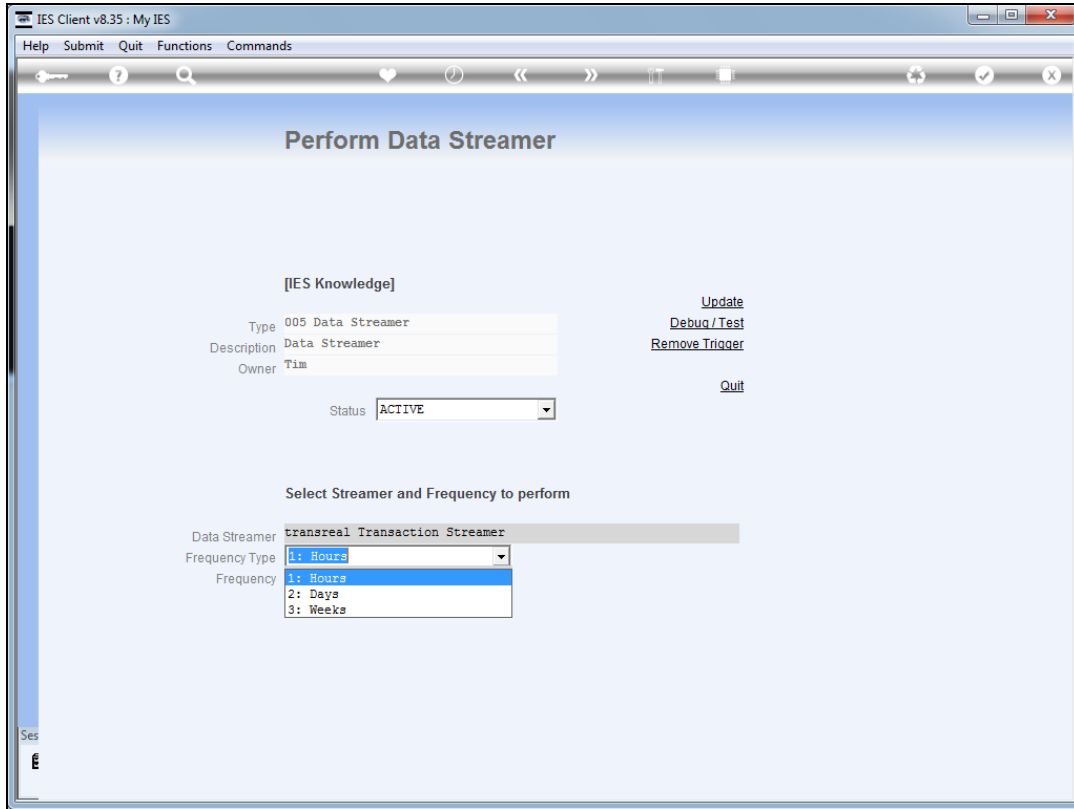
Slide 12
Slide notes:



Slide 13
Slide notes:

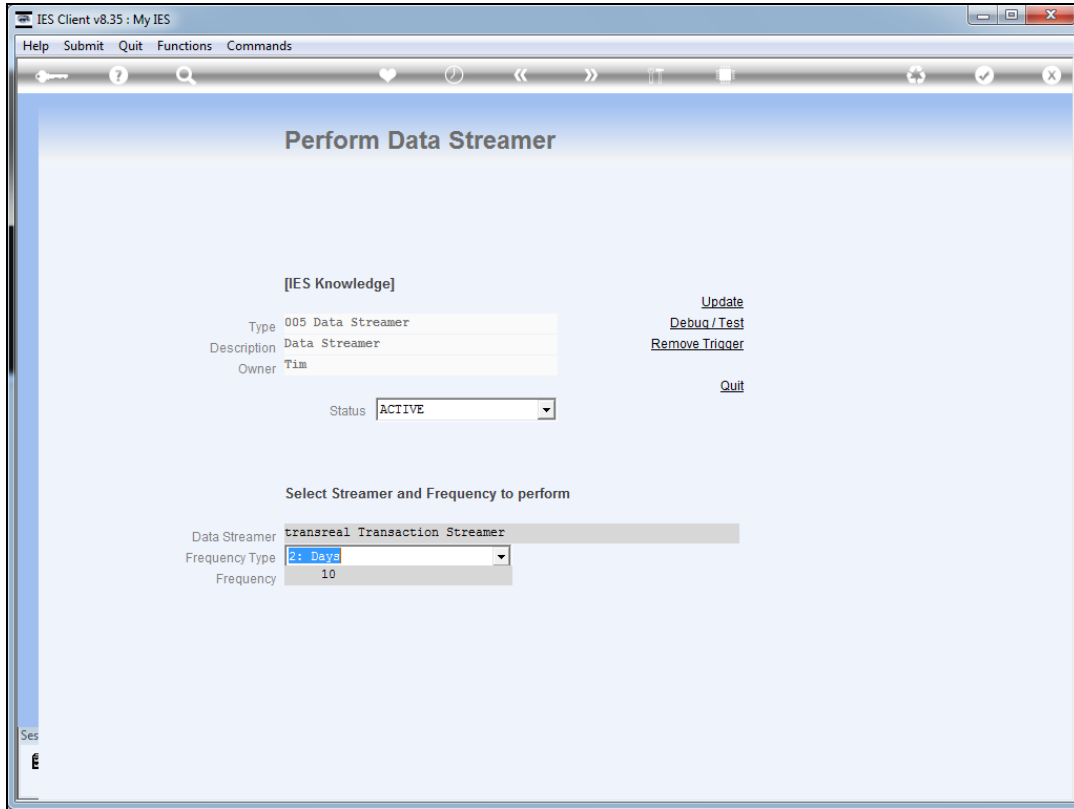


Slide 14
Slide notes:

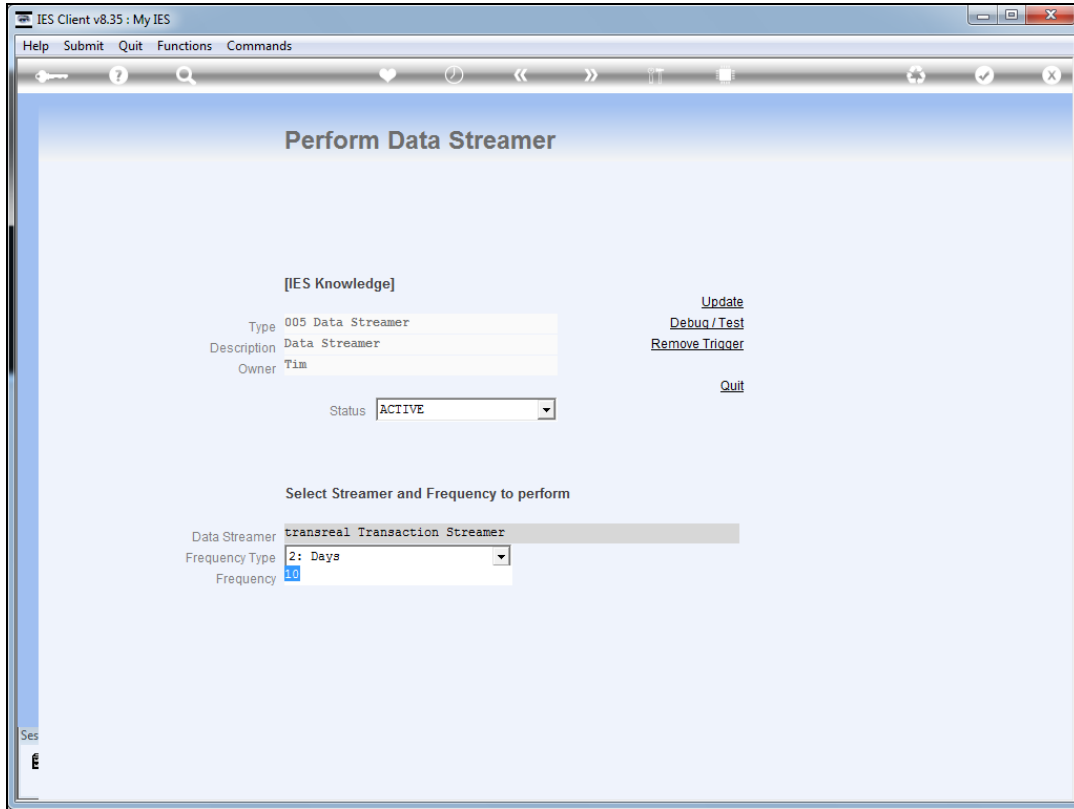


Slide 15

Slide notes: We can select the frequency type by Hours, Days or Weeks.

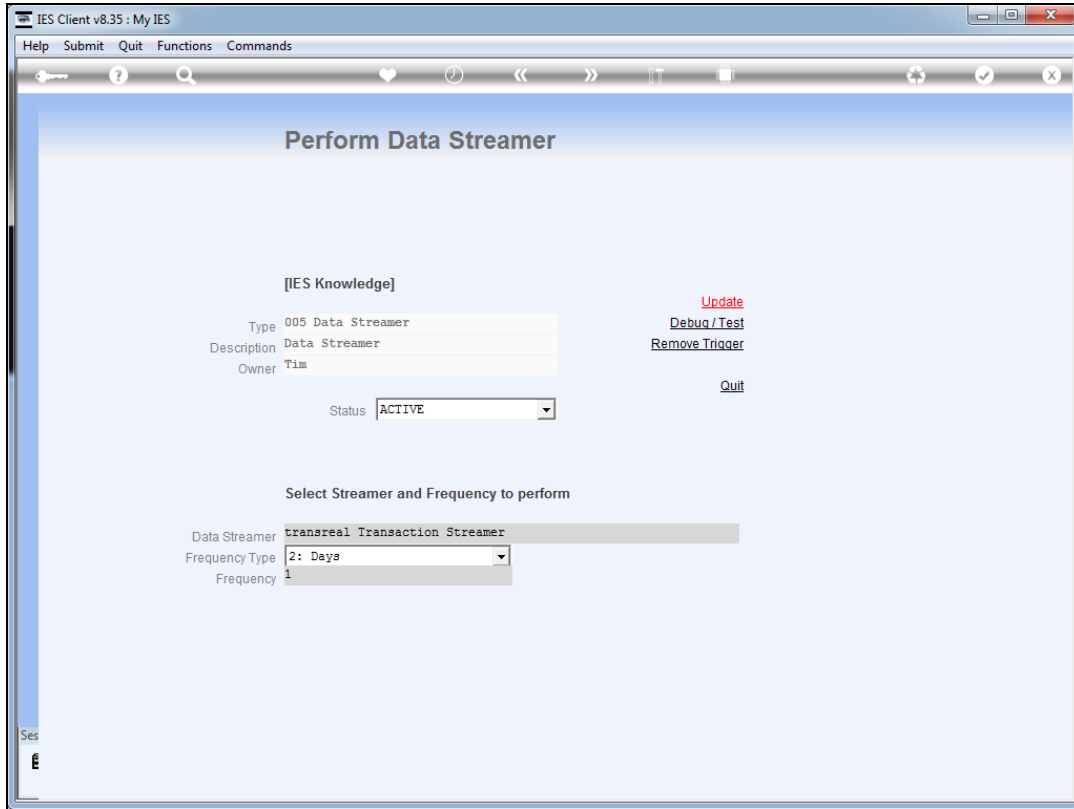


Slide 16
Slide notes:

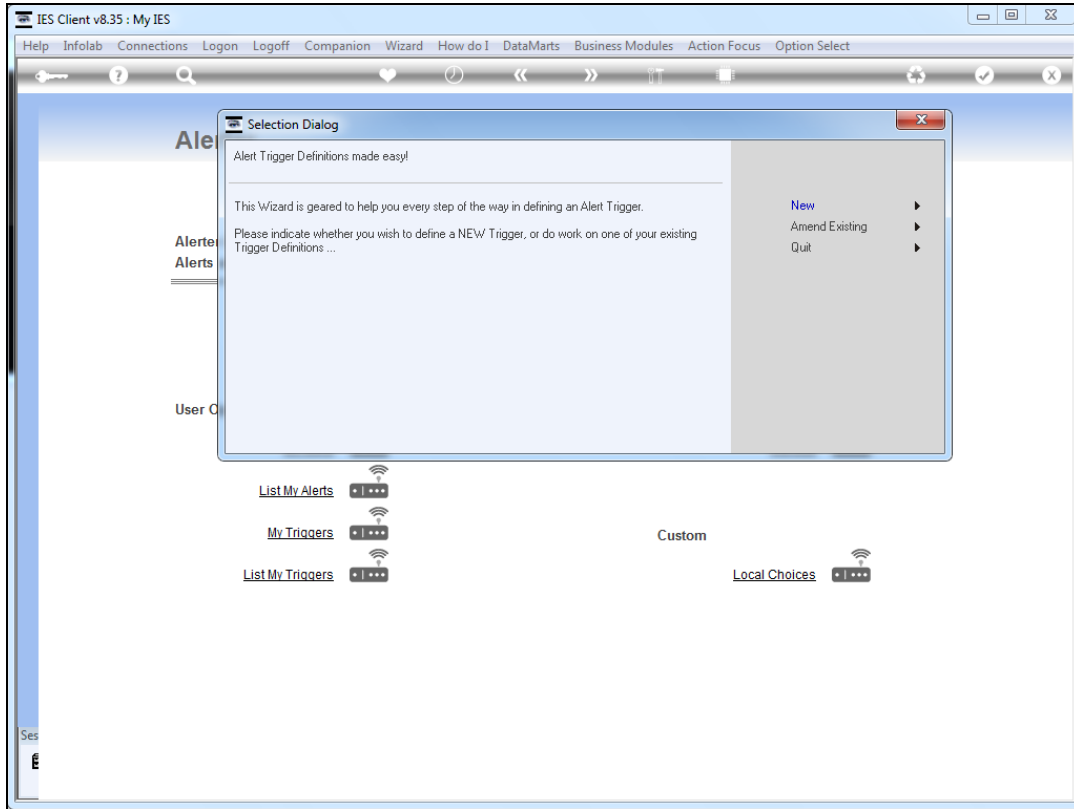


Slide 17

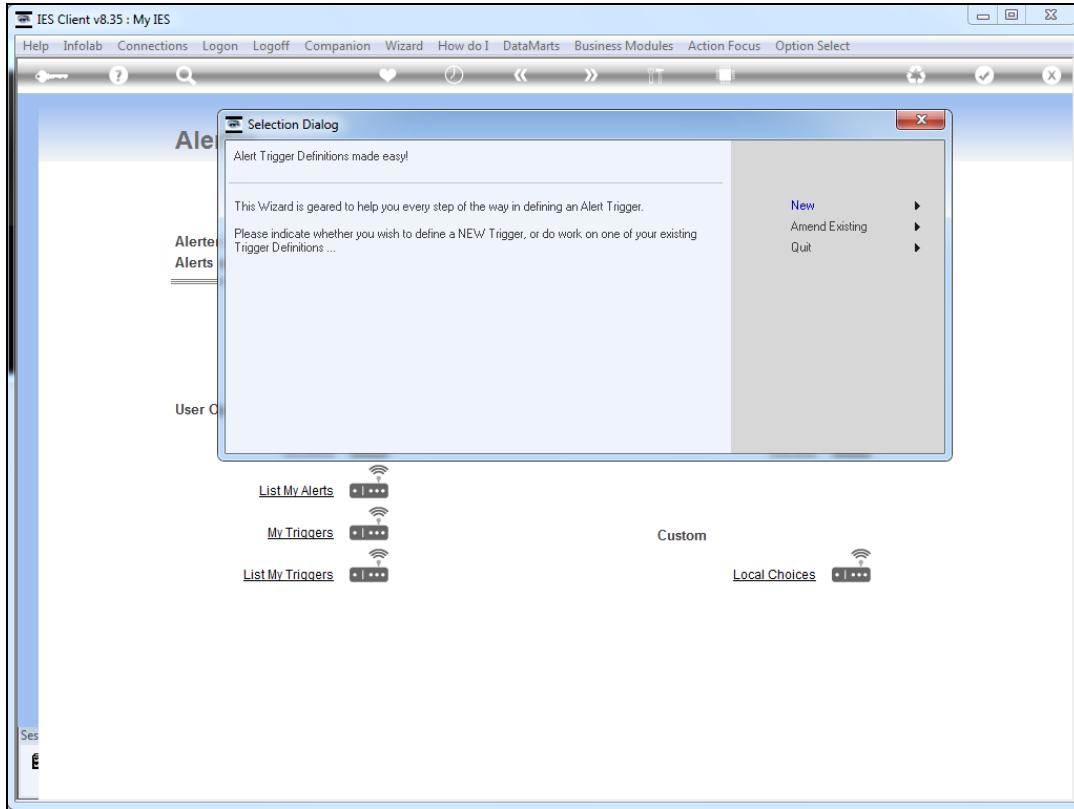
Slide notes: And we choose the frequency to accompany the frequency type. In this case, we will perform the Streamer once per day.



Slide 18
Slide notes:



Slide 19
Slide notes:



Slide 20
Slide notes: