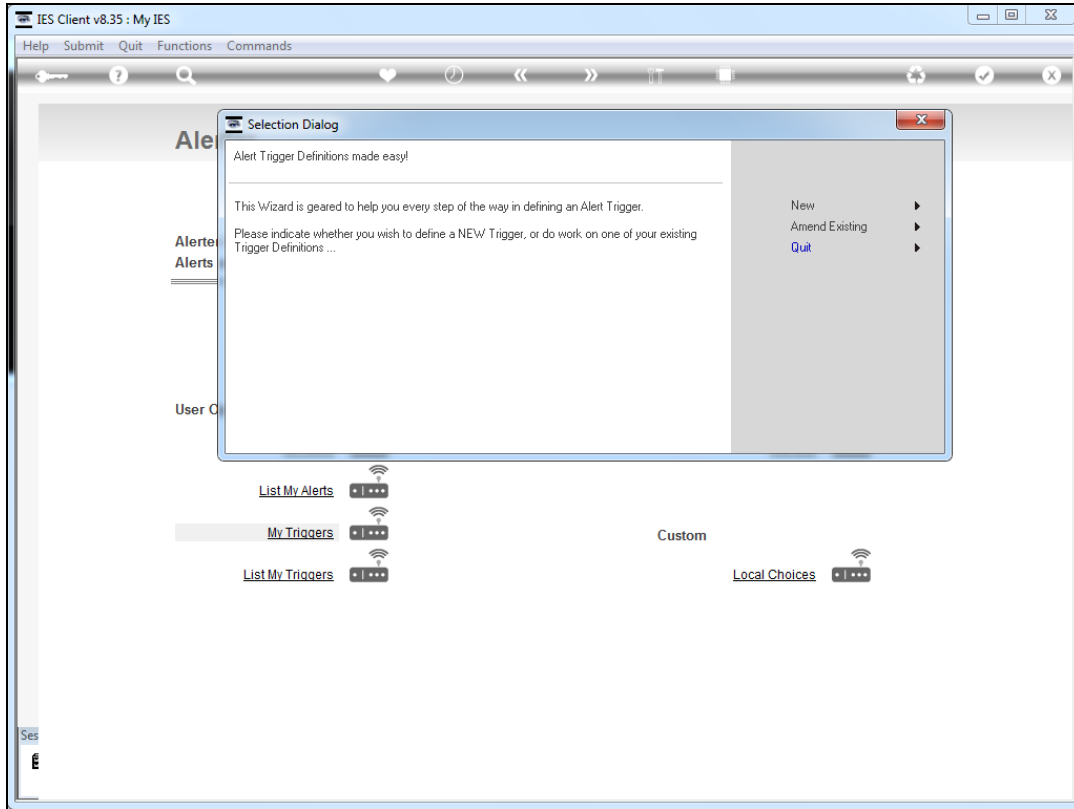
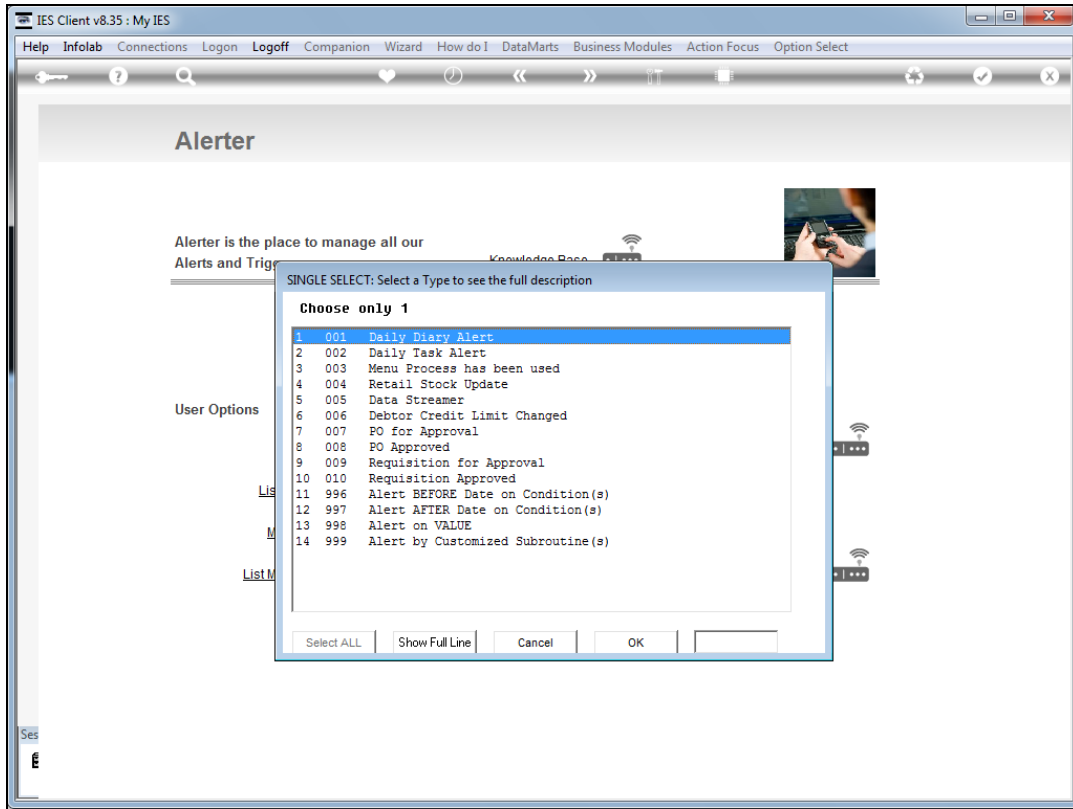


Slide 1

Slide notes: There are advanced Trigger types that are not suitable for use by general IES Users and they should be avoided by all but Developers who understand the technicalities of Alerter.

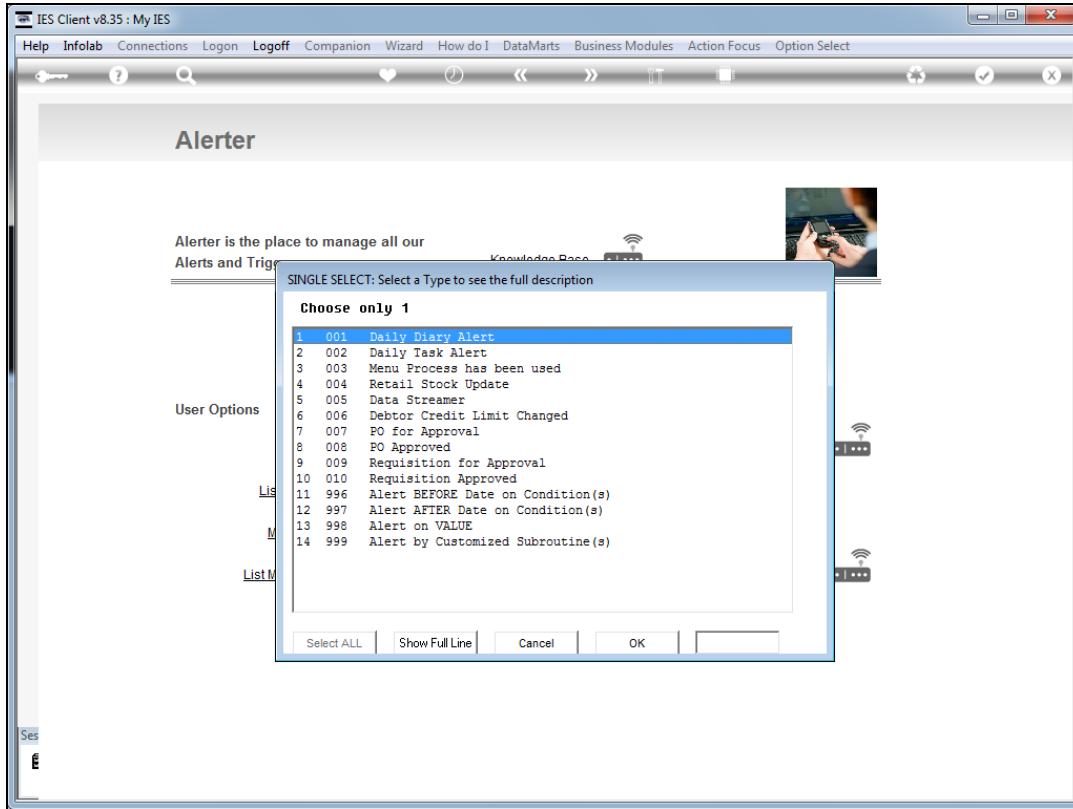


Slide 2  
Slide notes:

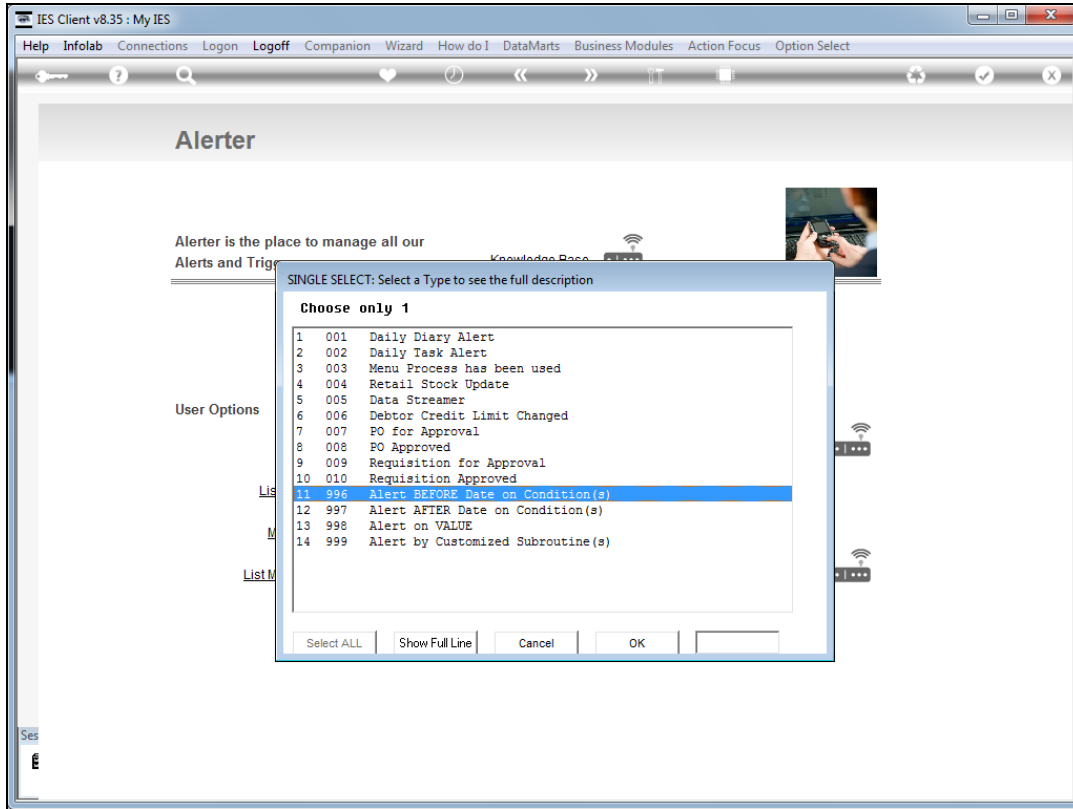


Slide 3

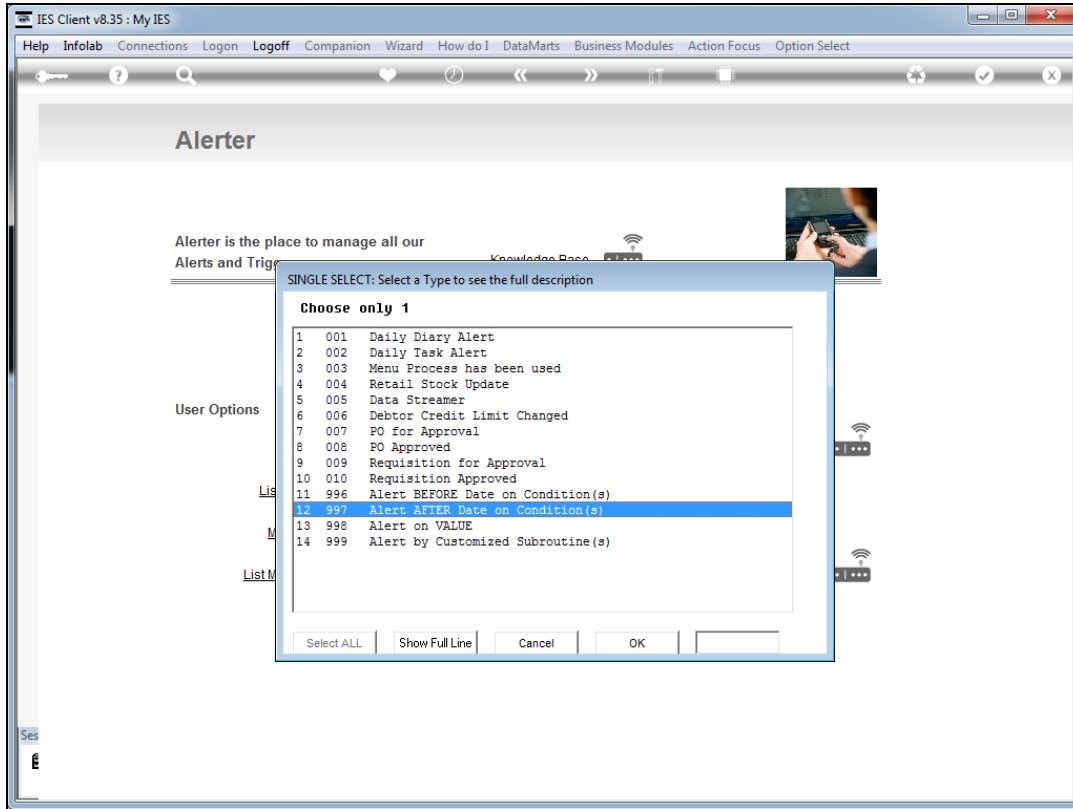
Slide notes: These triggers are numbered 996 to 999.



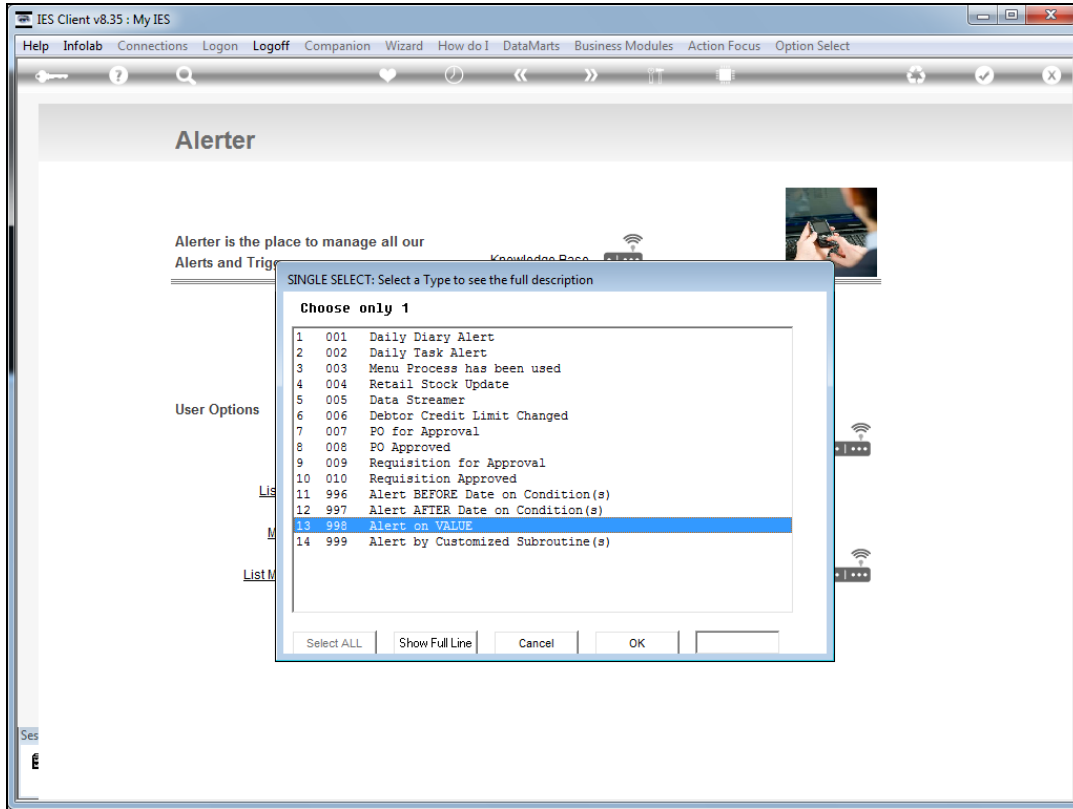
Slide 4  
Slide notes:



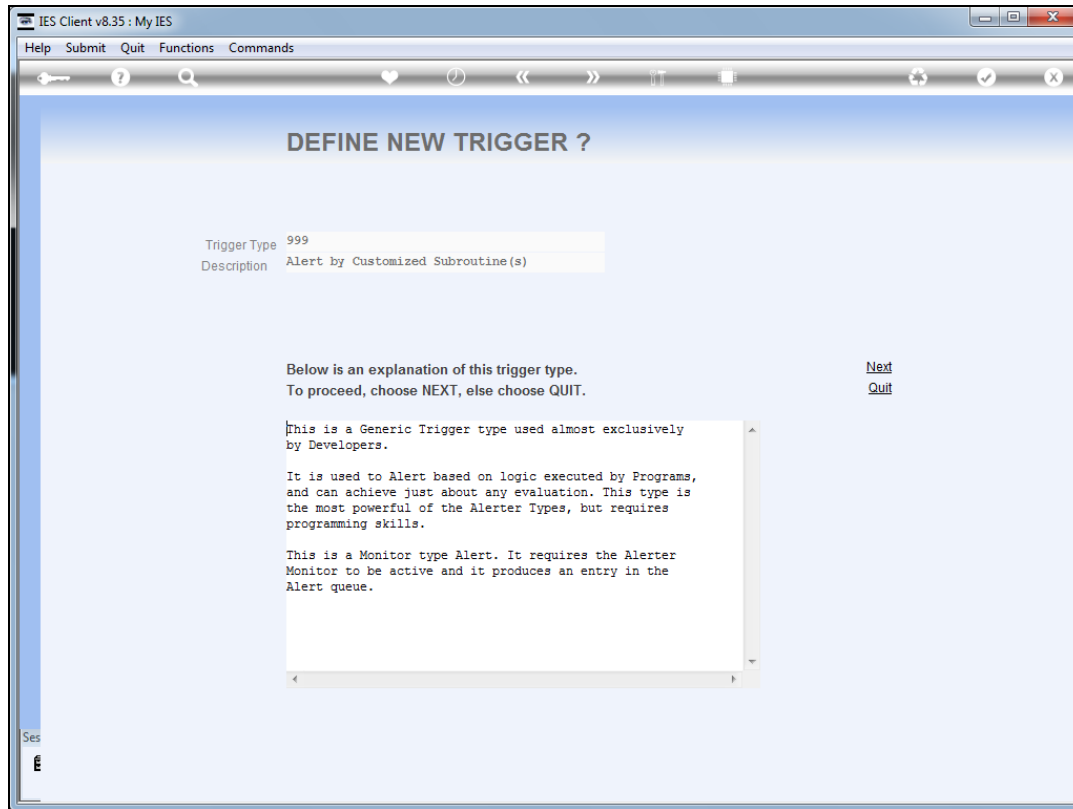
Slide 5  
Slide notes:



Slide 6  
Slide notes:



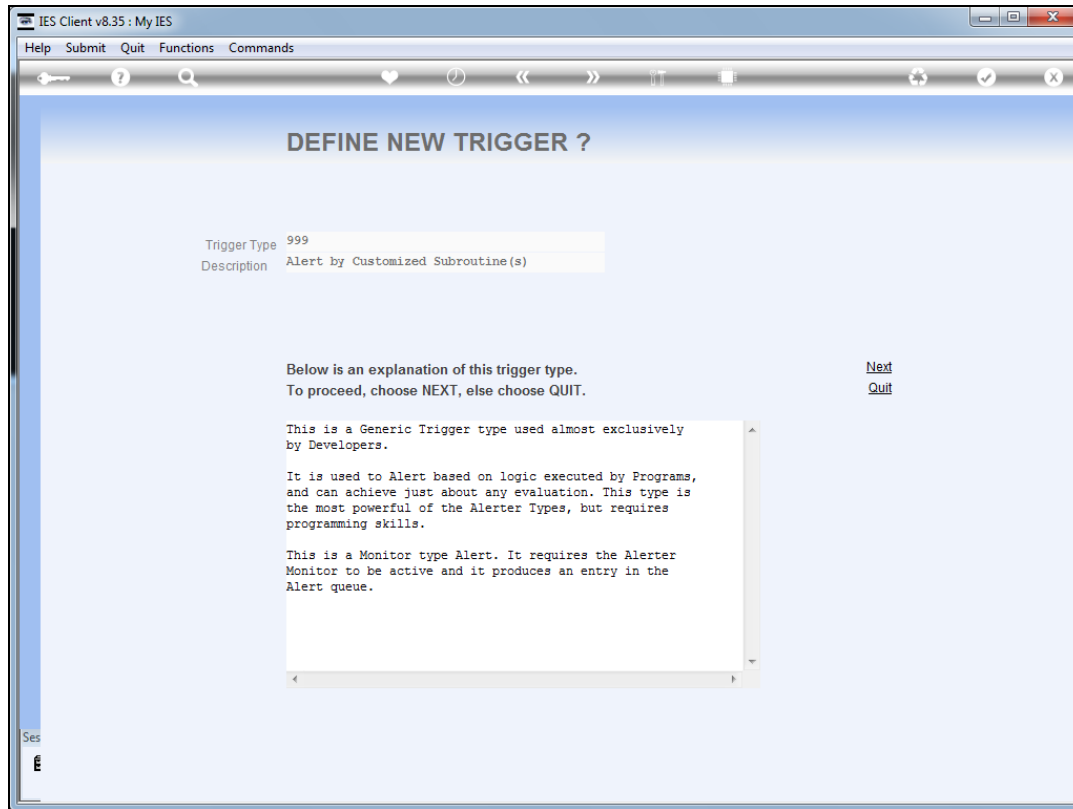
Slide 7  
Slide notes:



Slide 8

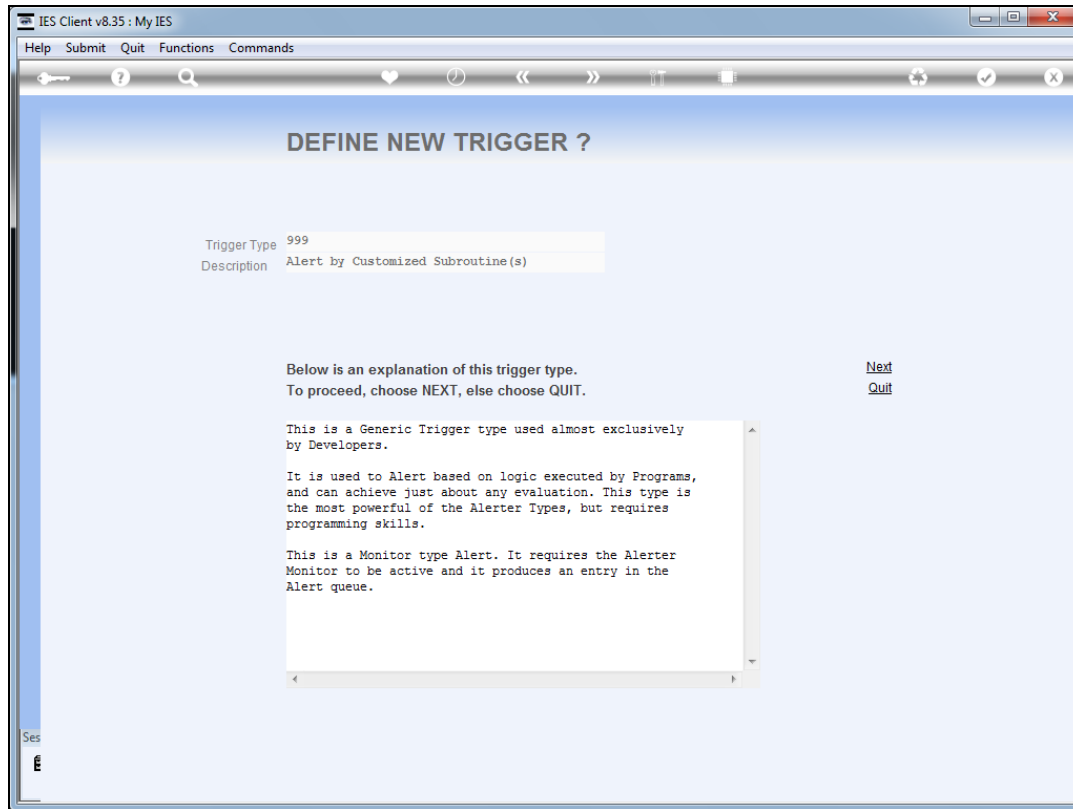
Slide notes: We will briefly enter one of these just to show what is there.



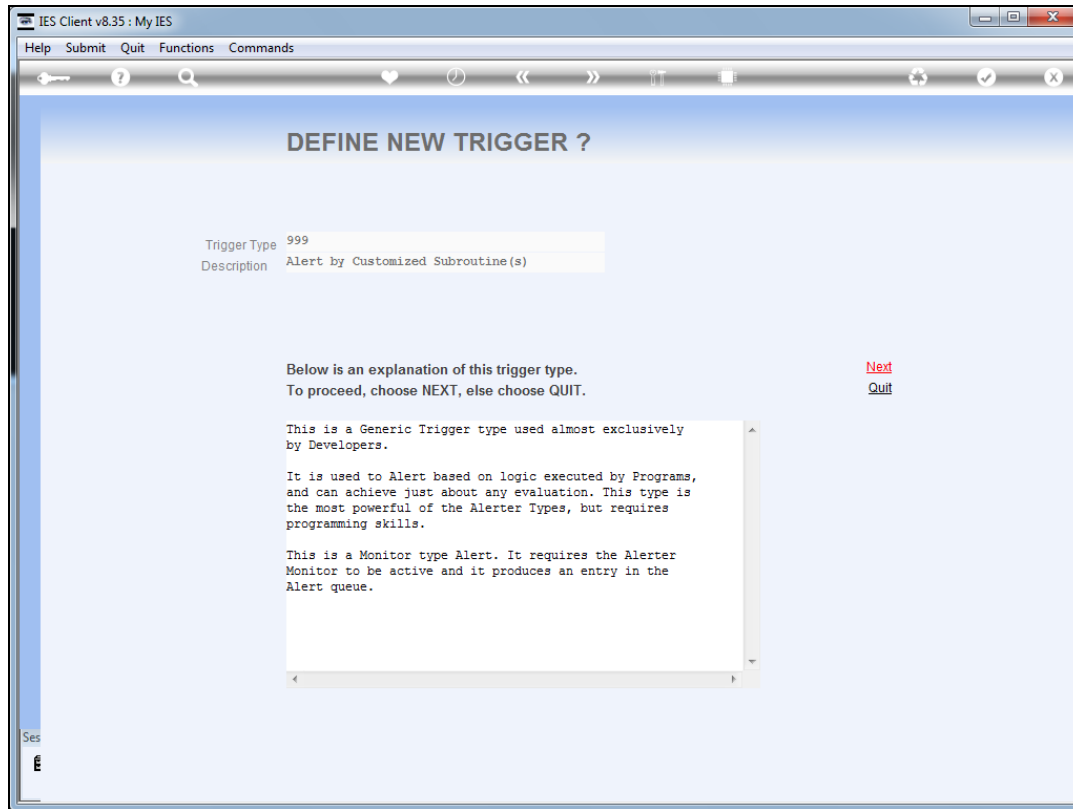


Slide 9

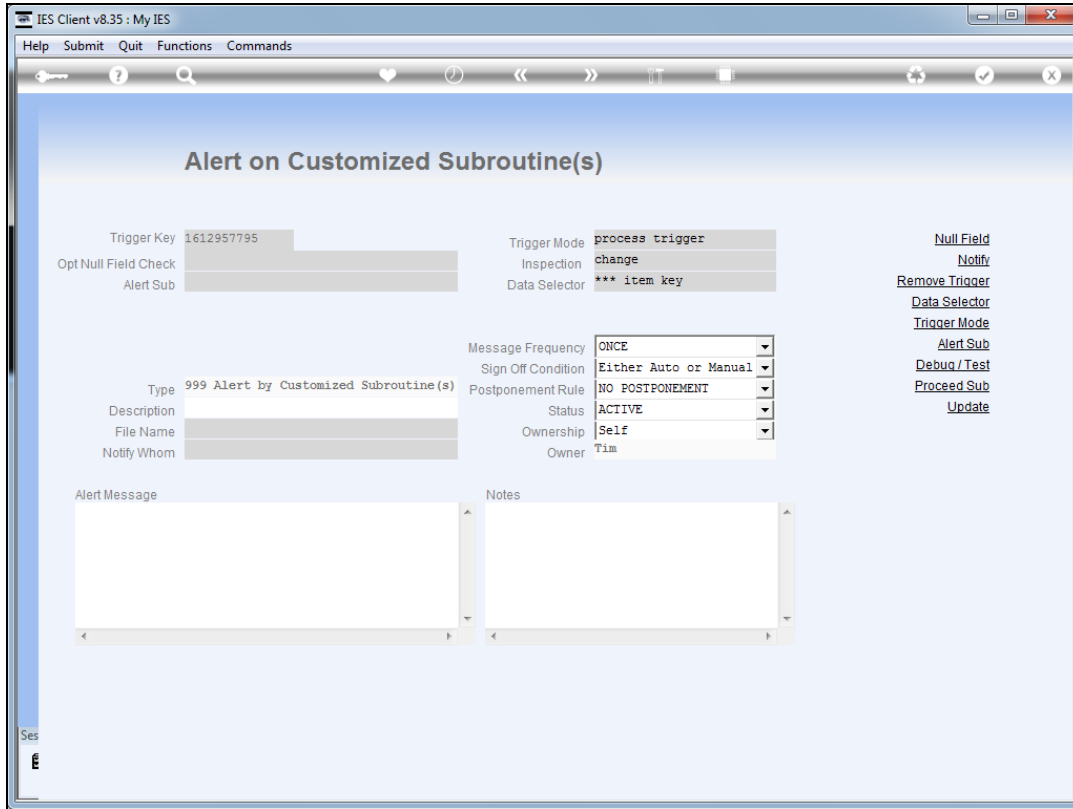
Slide notes:



Slide 10  
Slide notes:

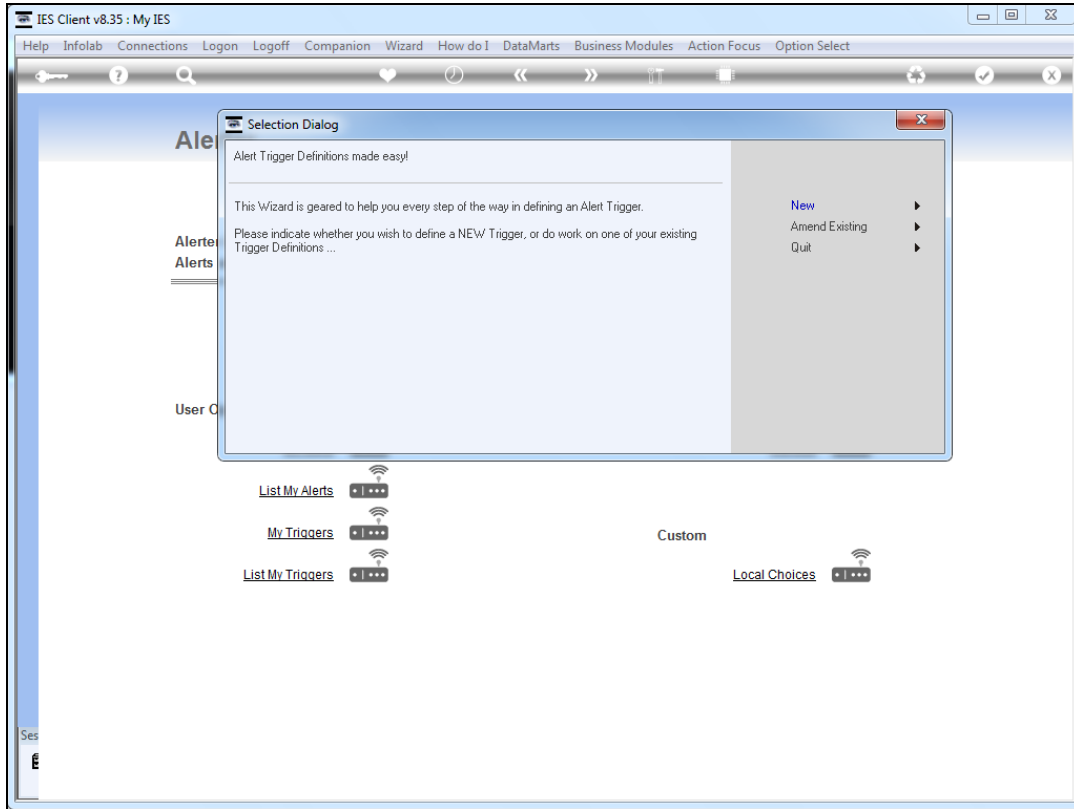


Slide 11  
Slide notes:

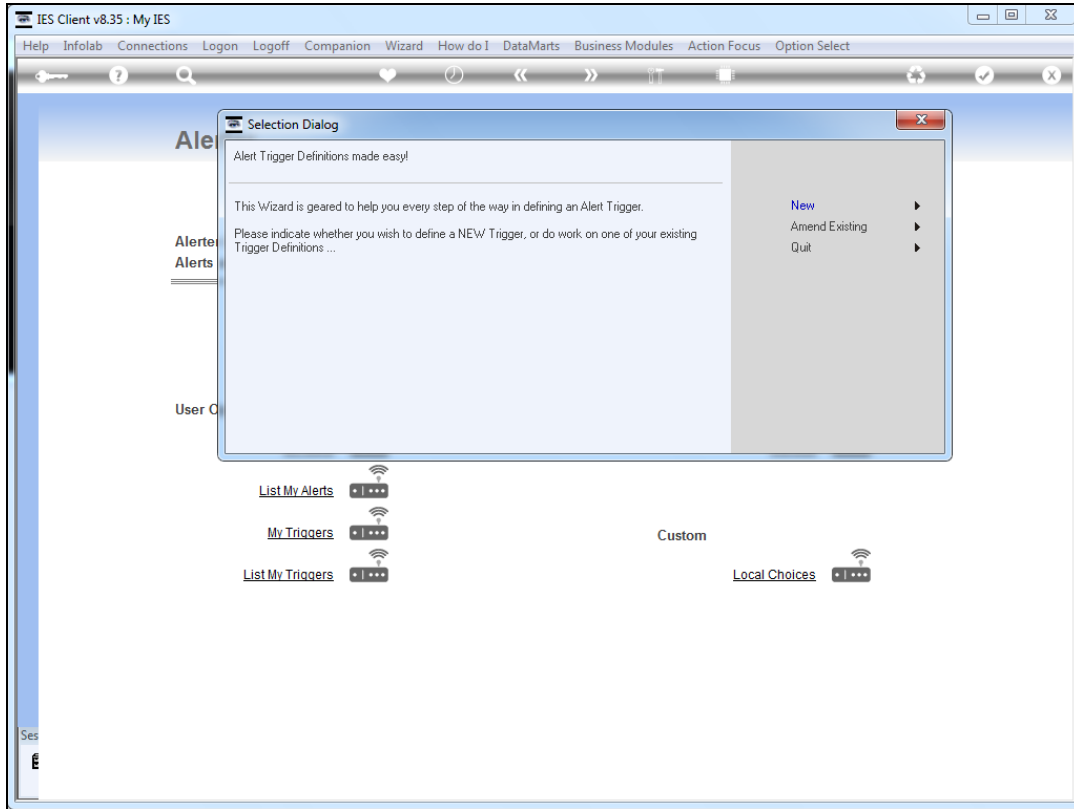


Slide 12

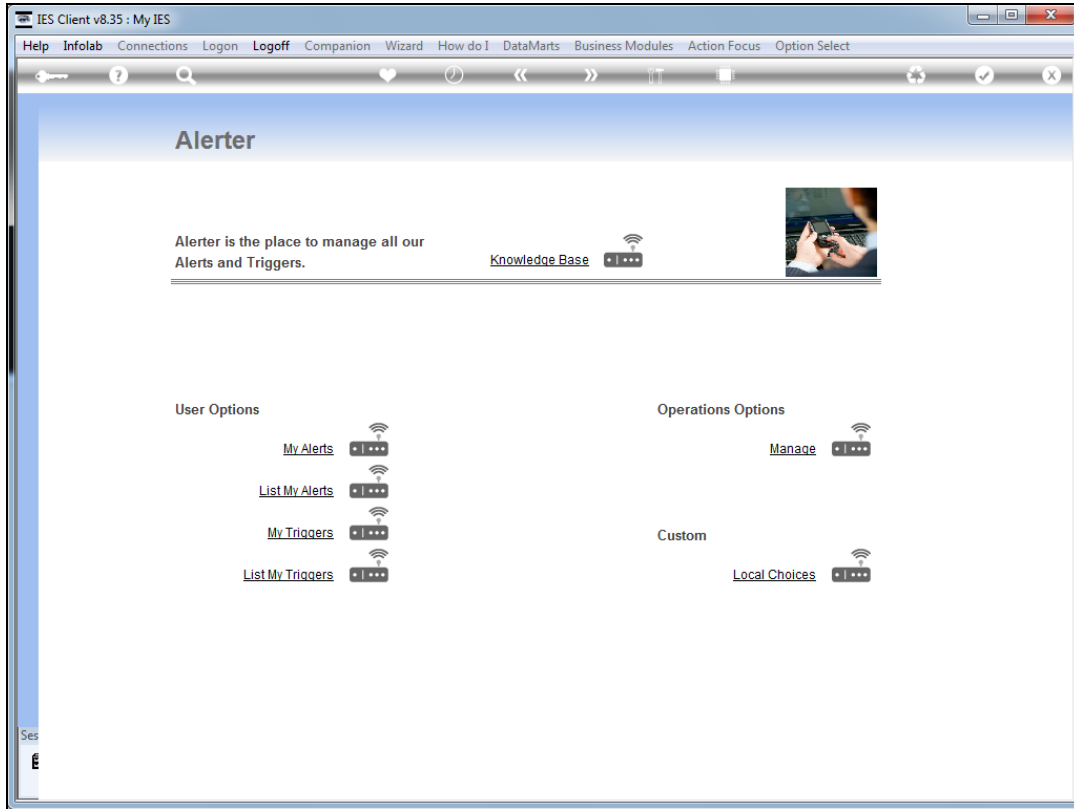
Slide notes: These trigger types may be avoided by IES Users.



Slide 13  
Slide notes:



Slide 14  
Slide notes:



Slide 15  
Slide notes: