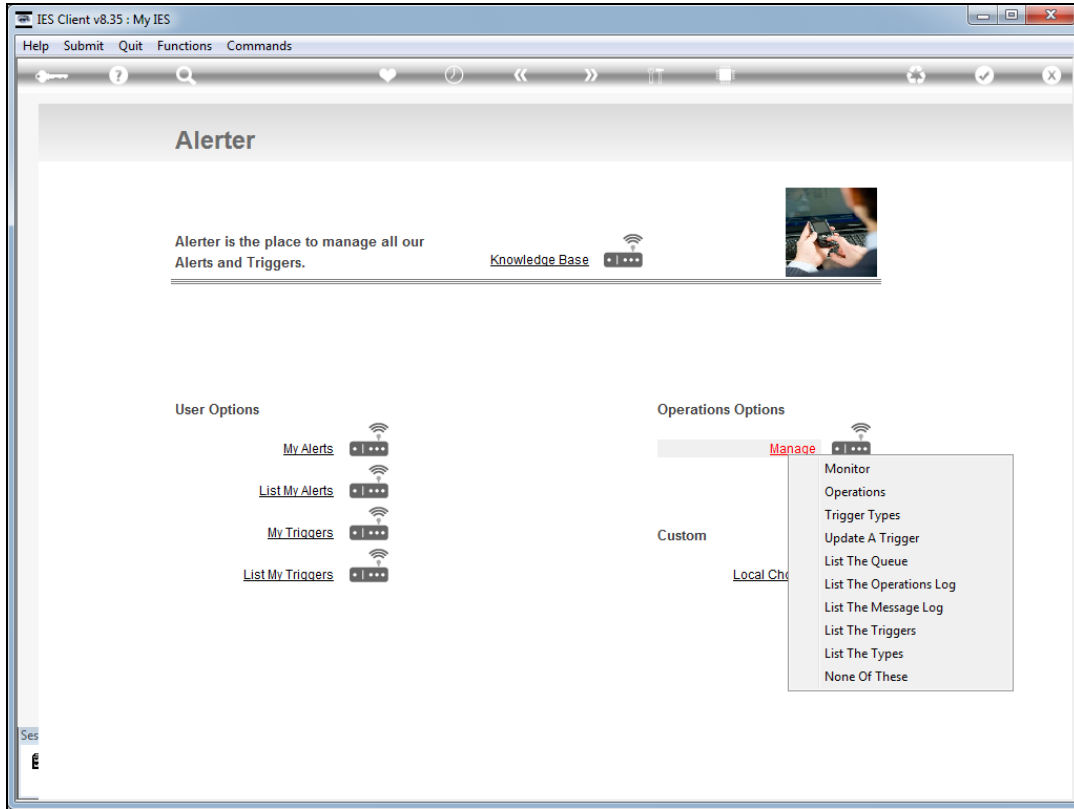
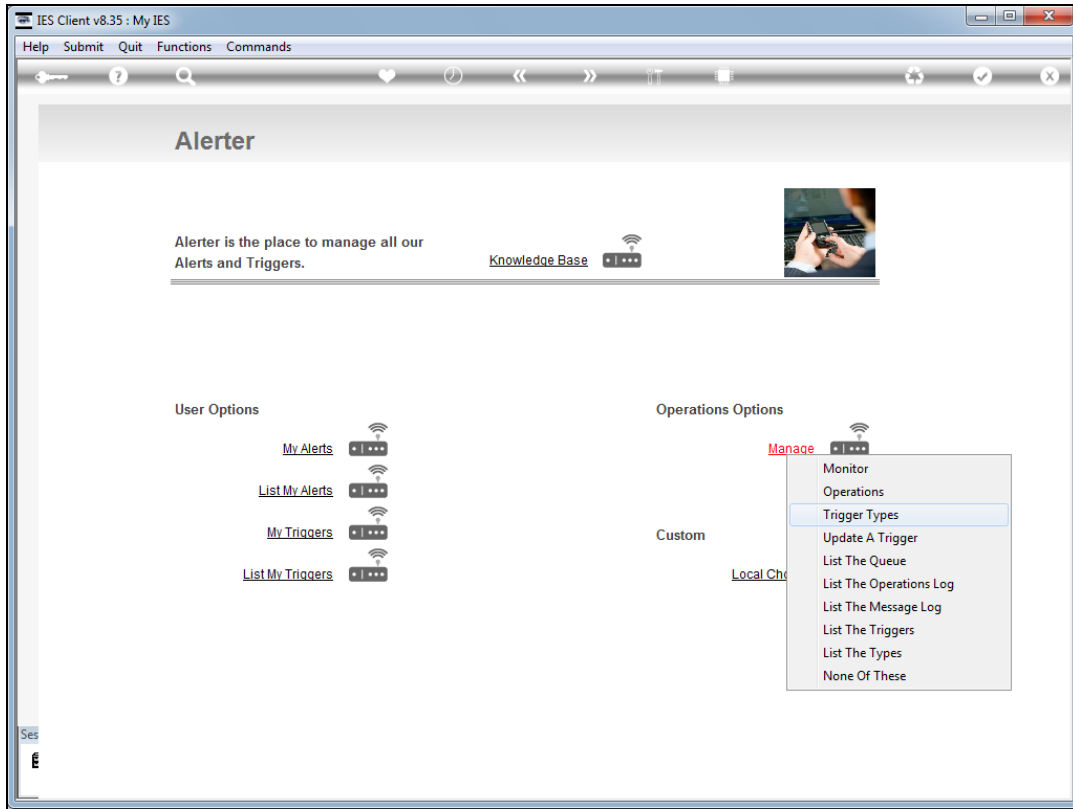


Slide 1

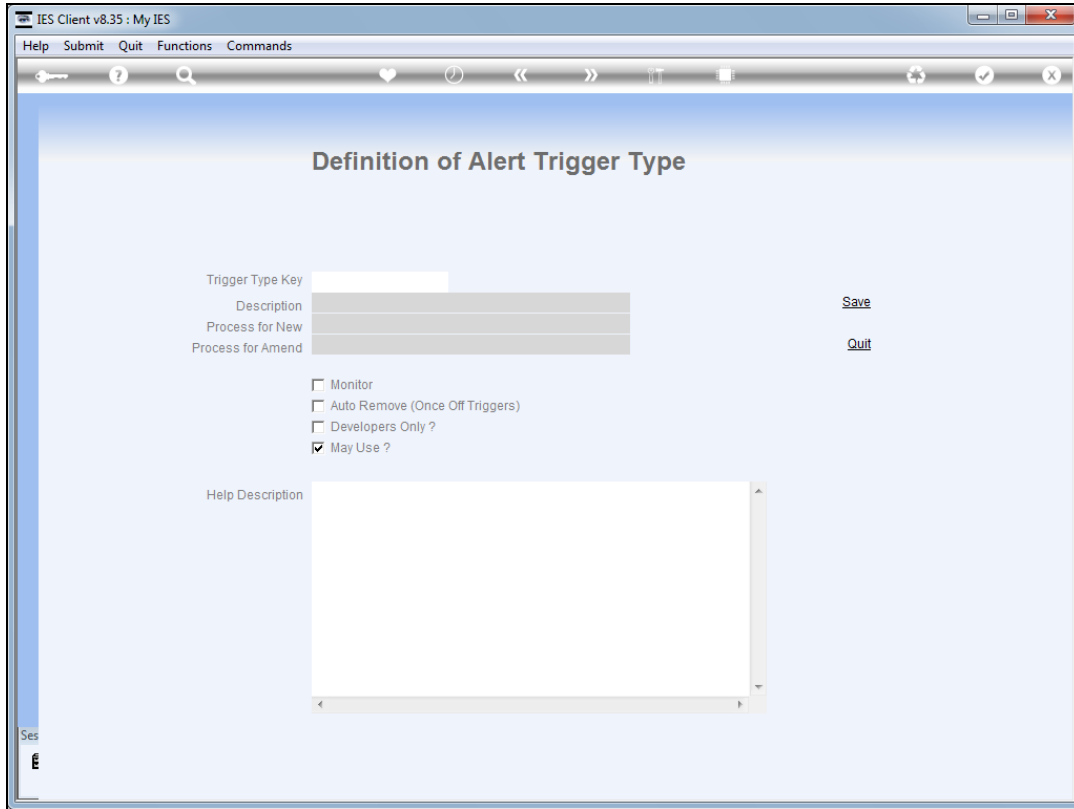
Slide notes: The Trigger Types master can be maintained from the "Manage" option at the Alerter menu.



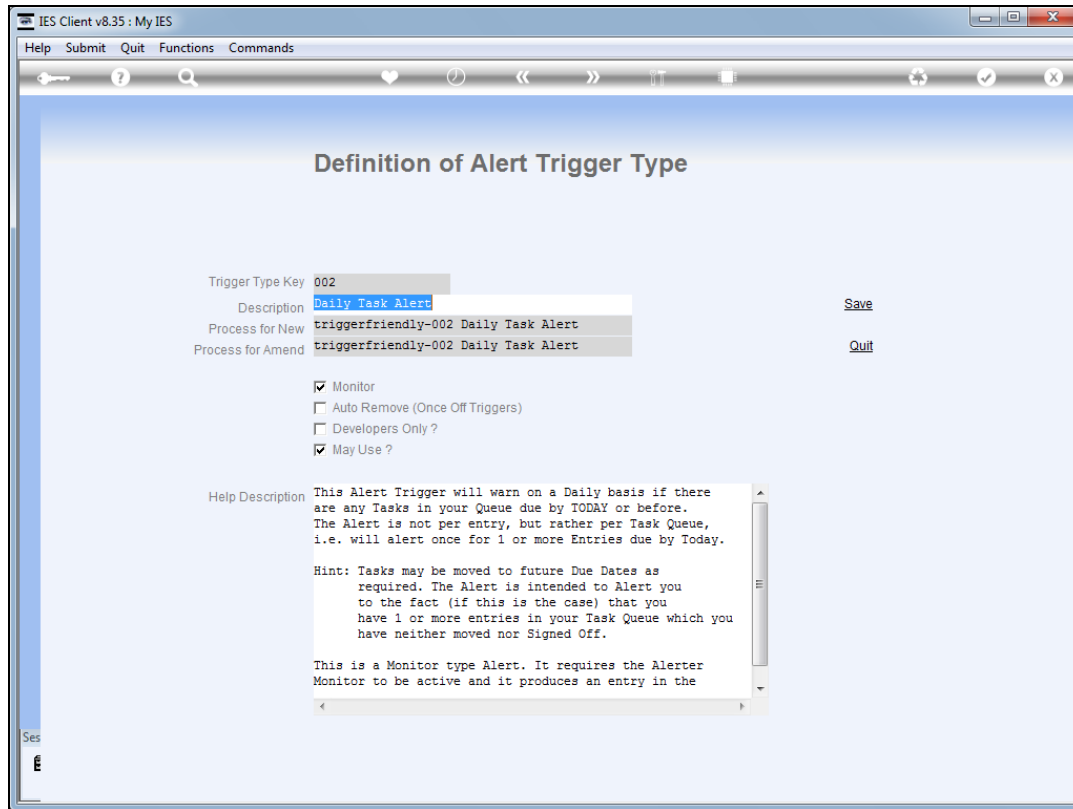
Slide 2
Slide notes:



Slide 3
Slide notes:

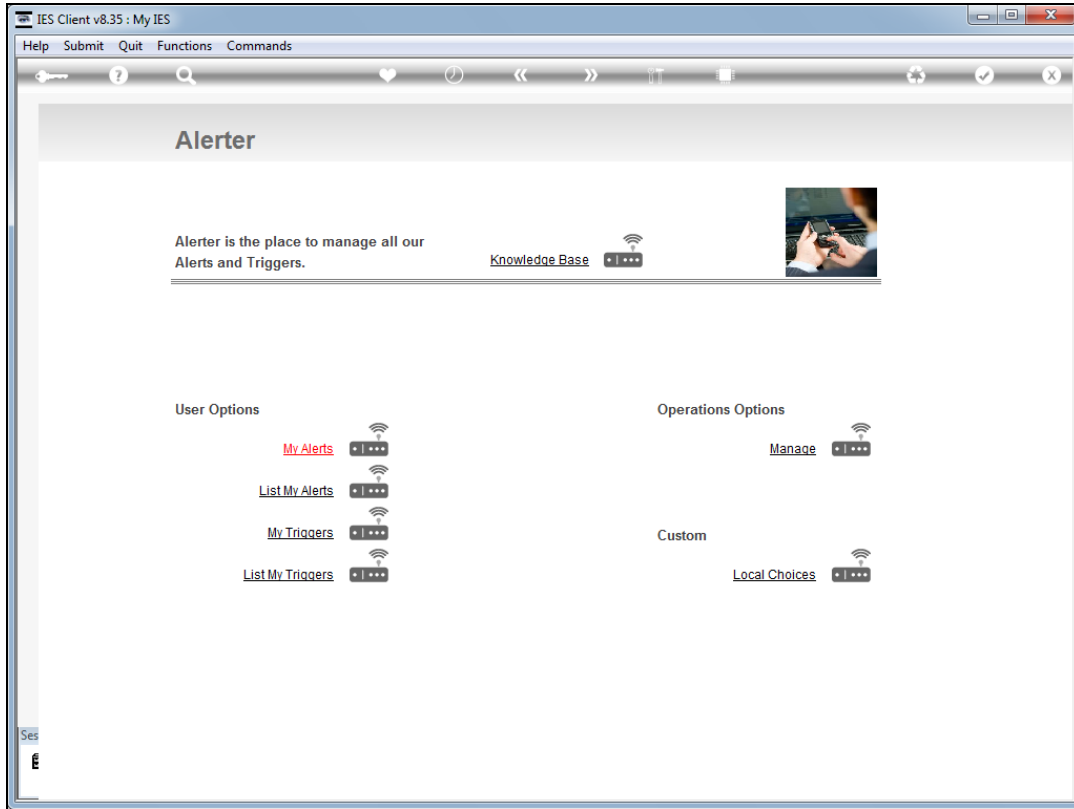


Slide 4
Slide notes:



Slide 5

Slide notes: While it is possible for Developers with sufficient knowledge to define new Trigger Types, the current status is that Infolab introduces the Trigger Types based on User requests. As such, it is best not to change the Trigger Types at the master.



Slide 6
Slide notes: