


Slide 1


Slide notes: Alerter Dispatch can be installed on the IES Server, or on another Server or machine with access to the required folders at IESNET on the IES Server. There is no additional installation required to do e-mail, once Alerter Dispatch is in place.



Alerter Dispatch –

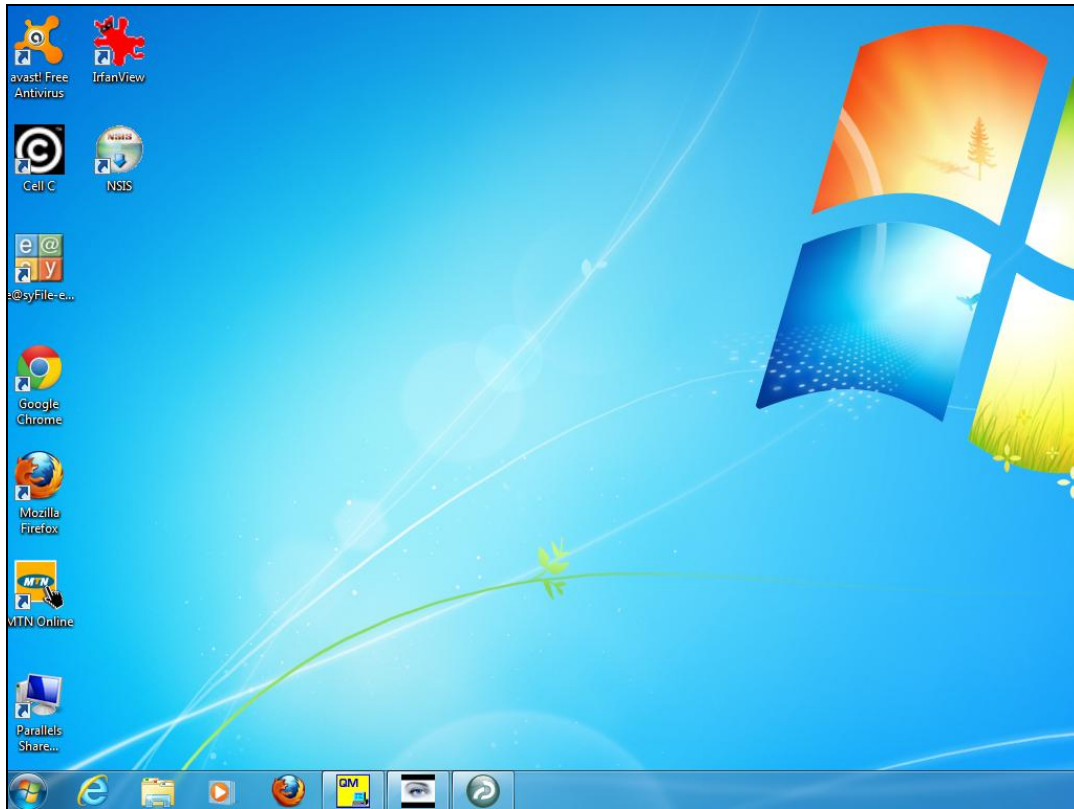
If internet connection is available here, then Alerter Dispatch can do e-mail

Note: internet connection here is NOT the modem used for SMS

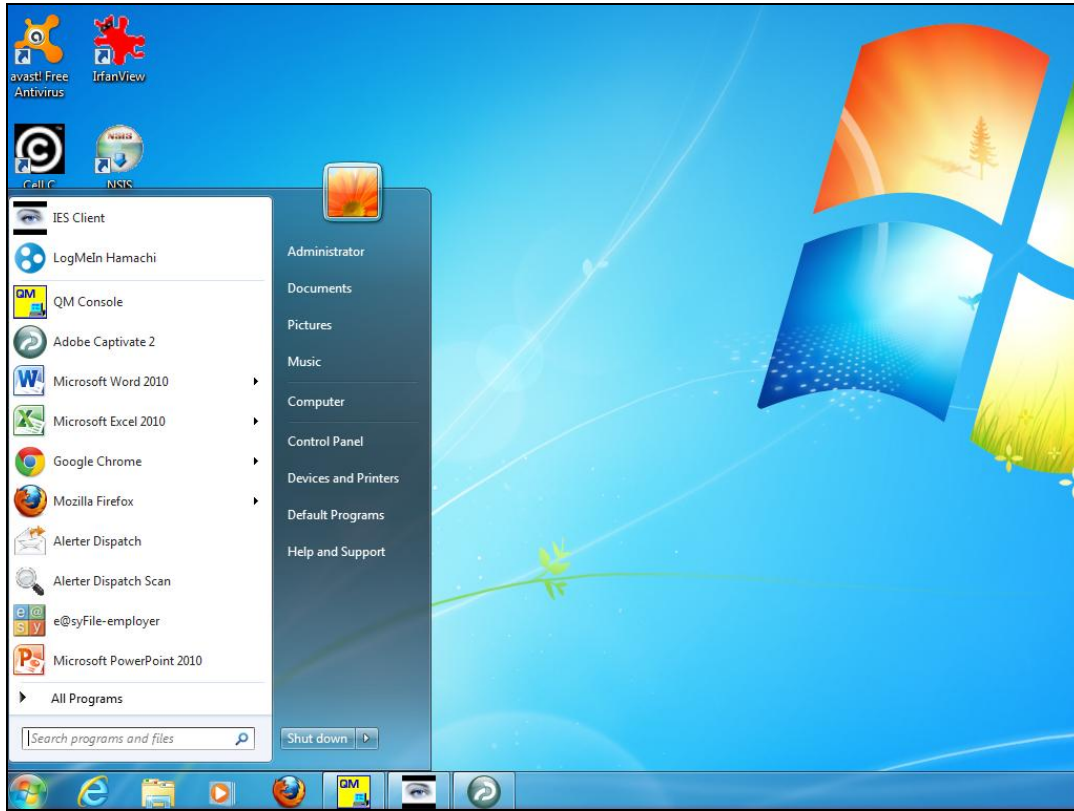


Slide 2

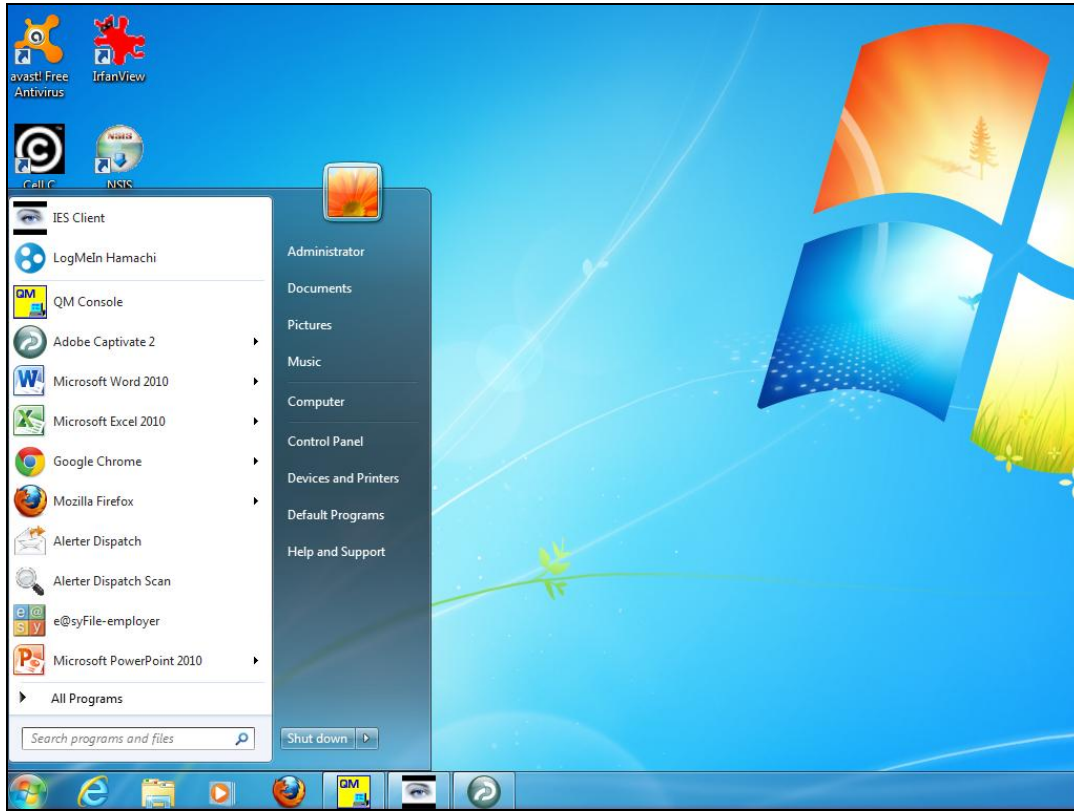
Slide notes: However, wherever Alerter Dispatch is installed, there must be an internet connection, as Alerter Dispatch will require this to dispatch e-mails. Note: The Internet connection should not be confused with the modem used for SMS, as that connection cannot and will not be used for e-mail.



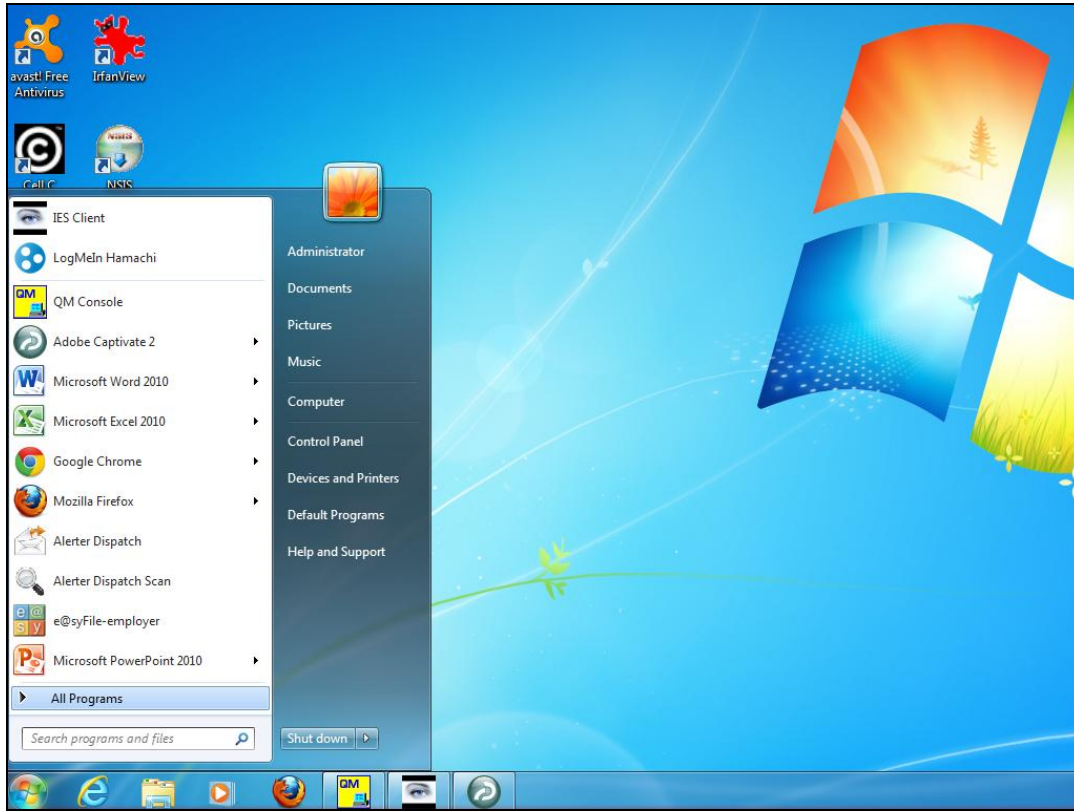
Slide 3
Slide notes:



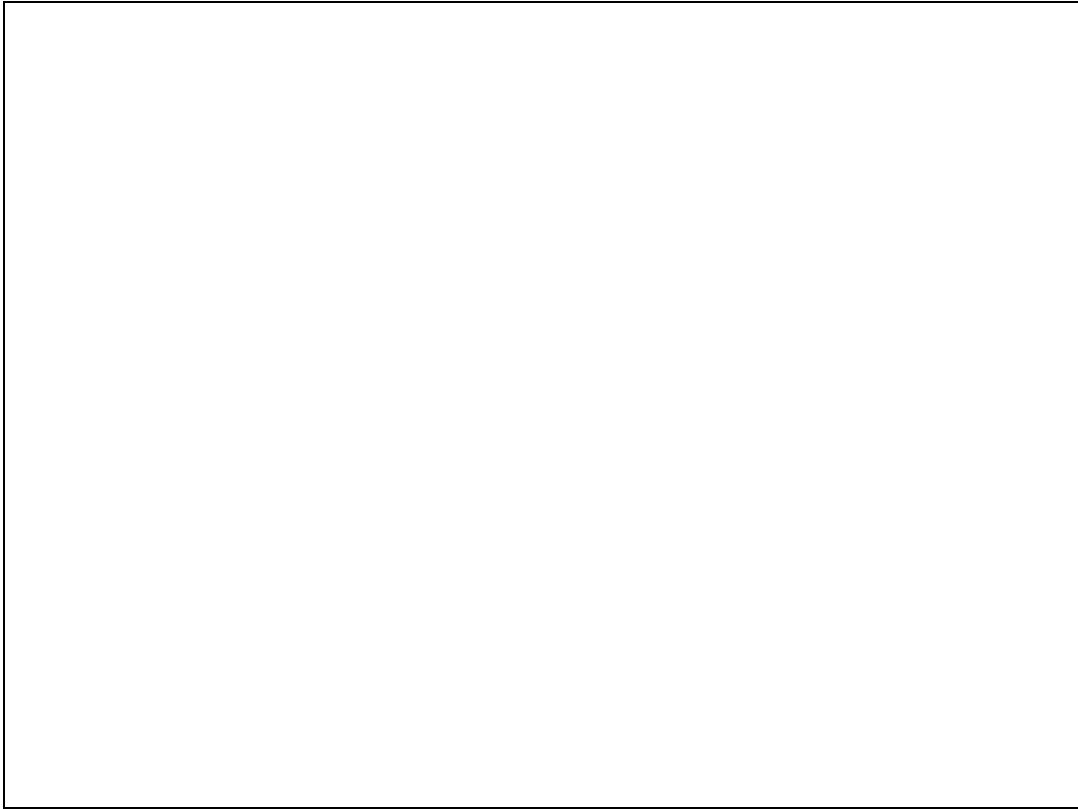
Slide 4
Slide notes:



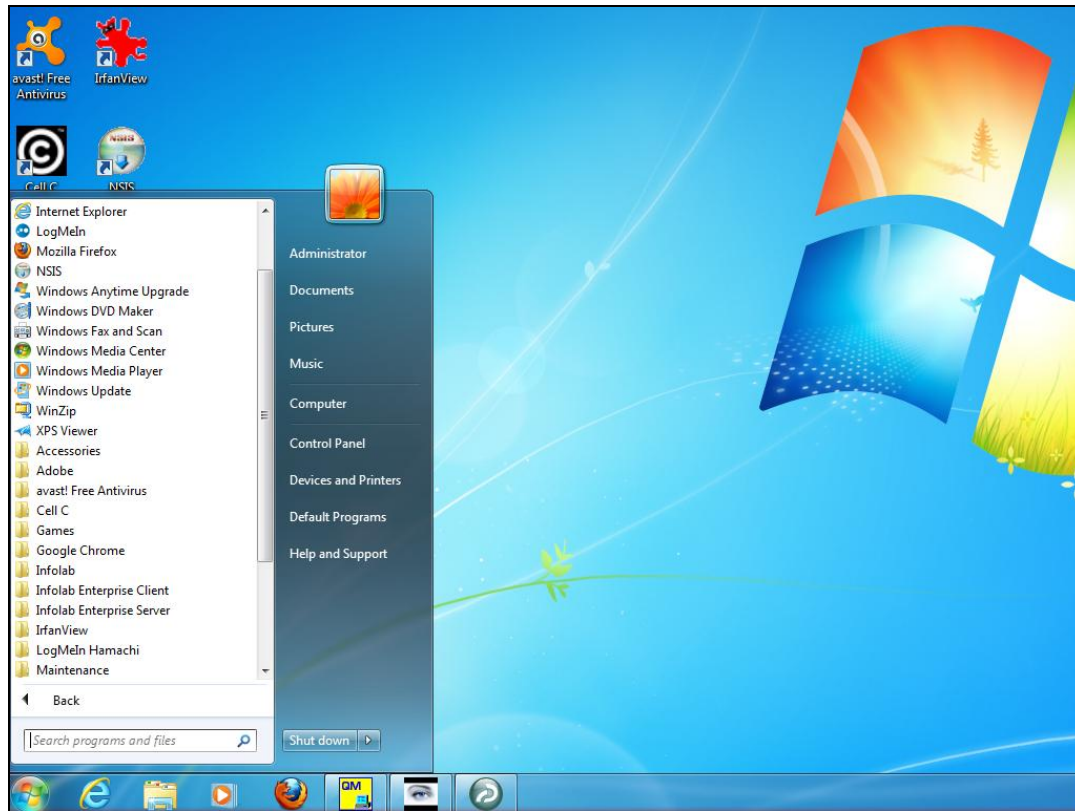
Slide 5
Slide notes:



Slide 6
Slide notes:

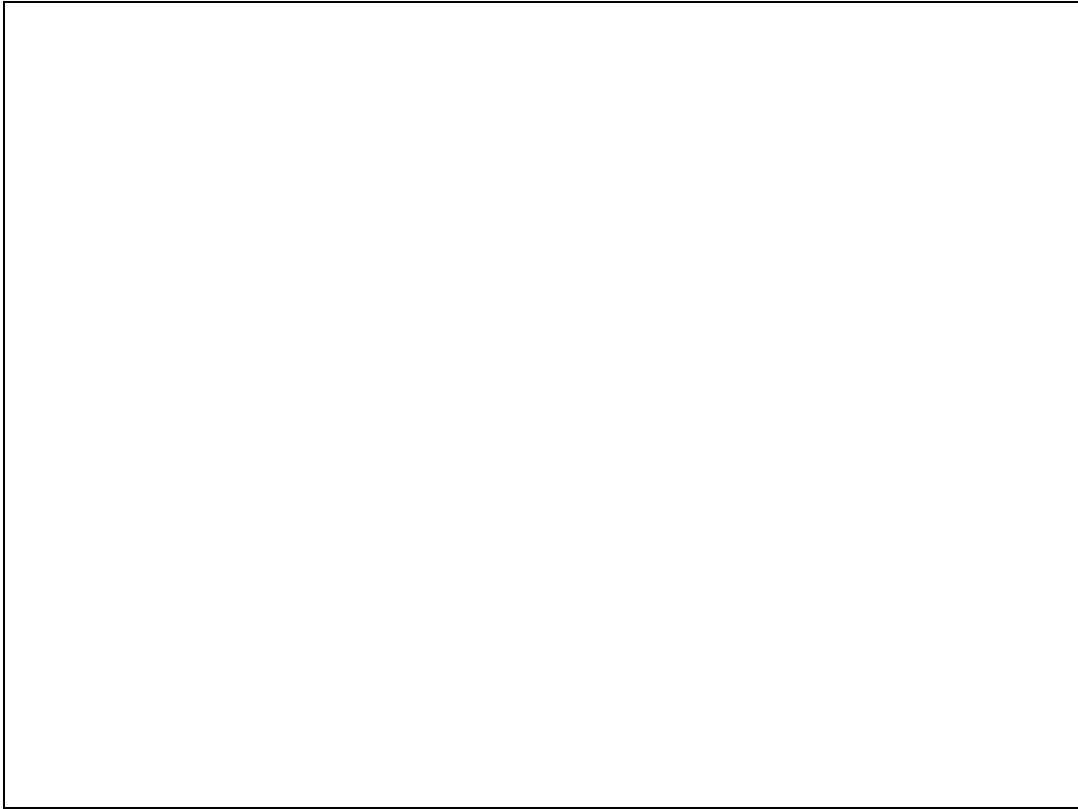


Slide 7
Slide notes:



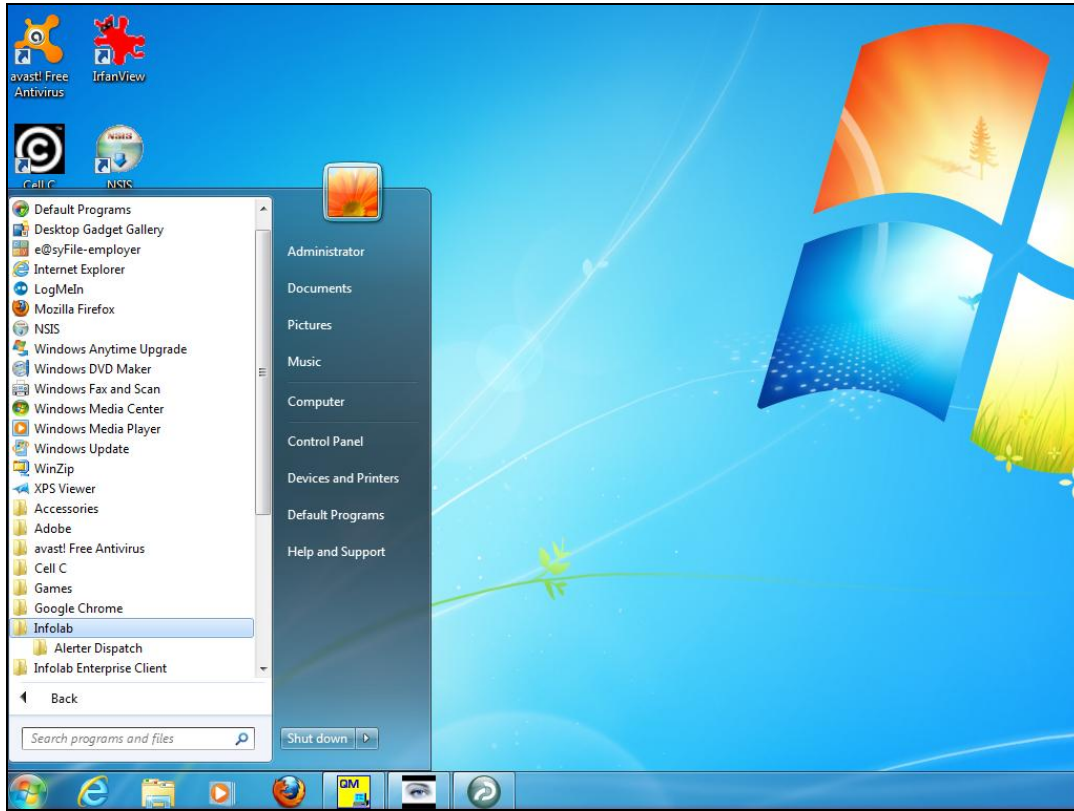
Slide 8

Slide notes: Once Alerter Dispatch has been installed, we will be able to select the Configuration wizard from the Program Files.

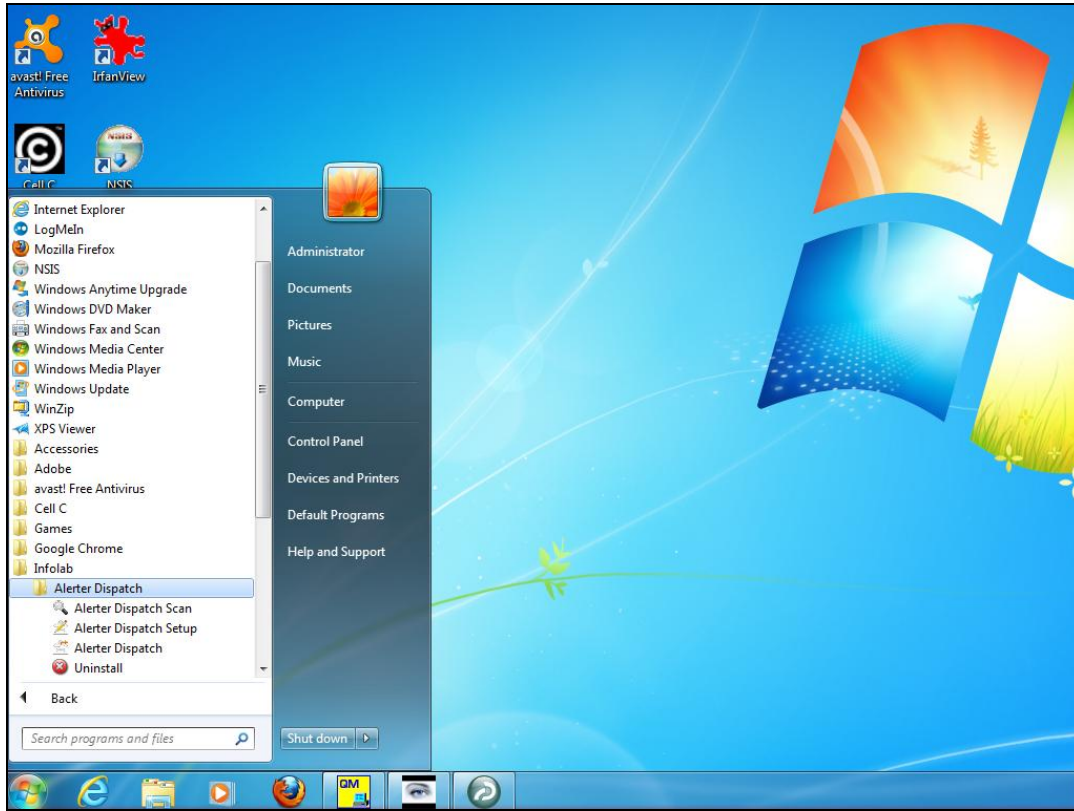


Slide 9

Slide notes:

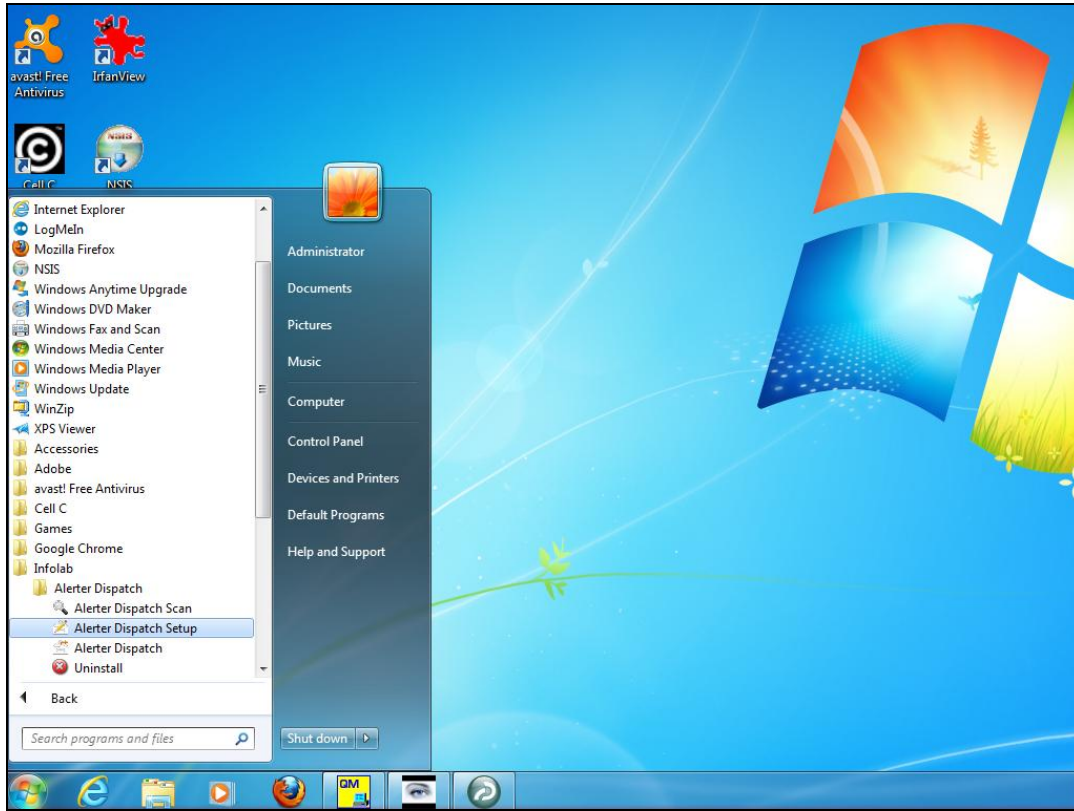


Slide 10
Slide notes:

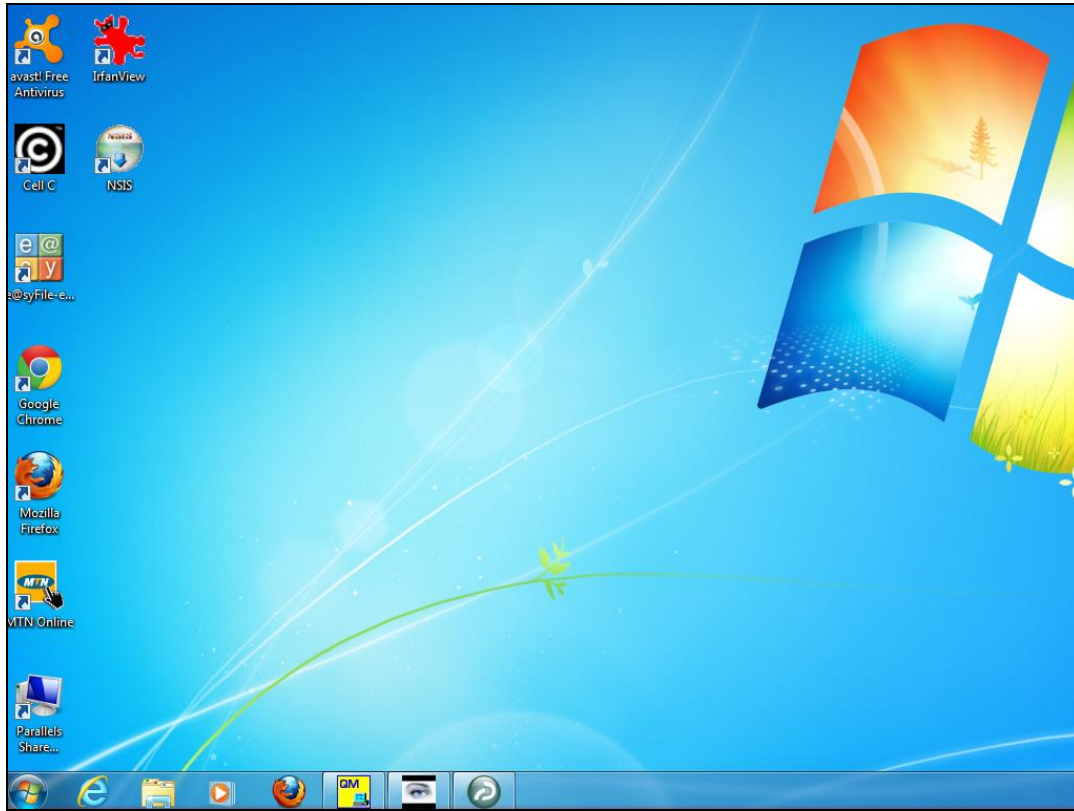


Slide 11

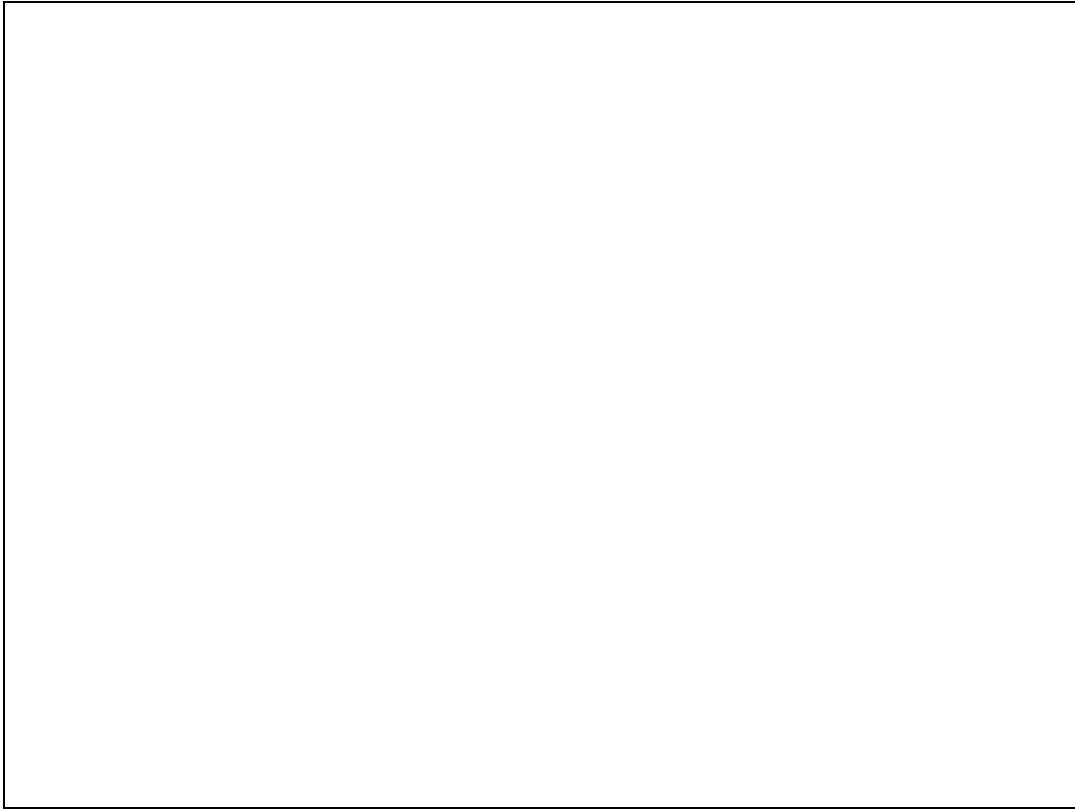
Slide notes: This option is found at Alerter Dispatch Setup.



Slide 12
Slide notes:

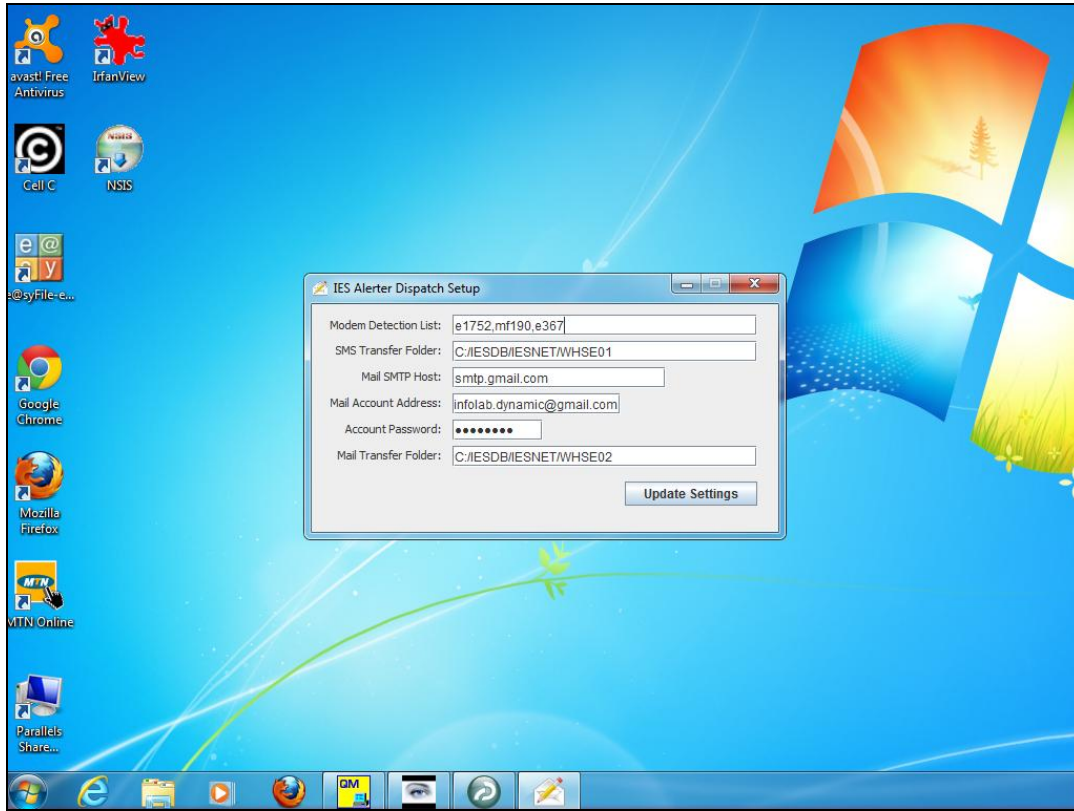


Slide 13
Slide notes:

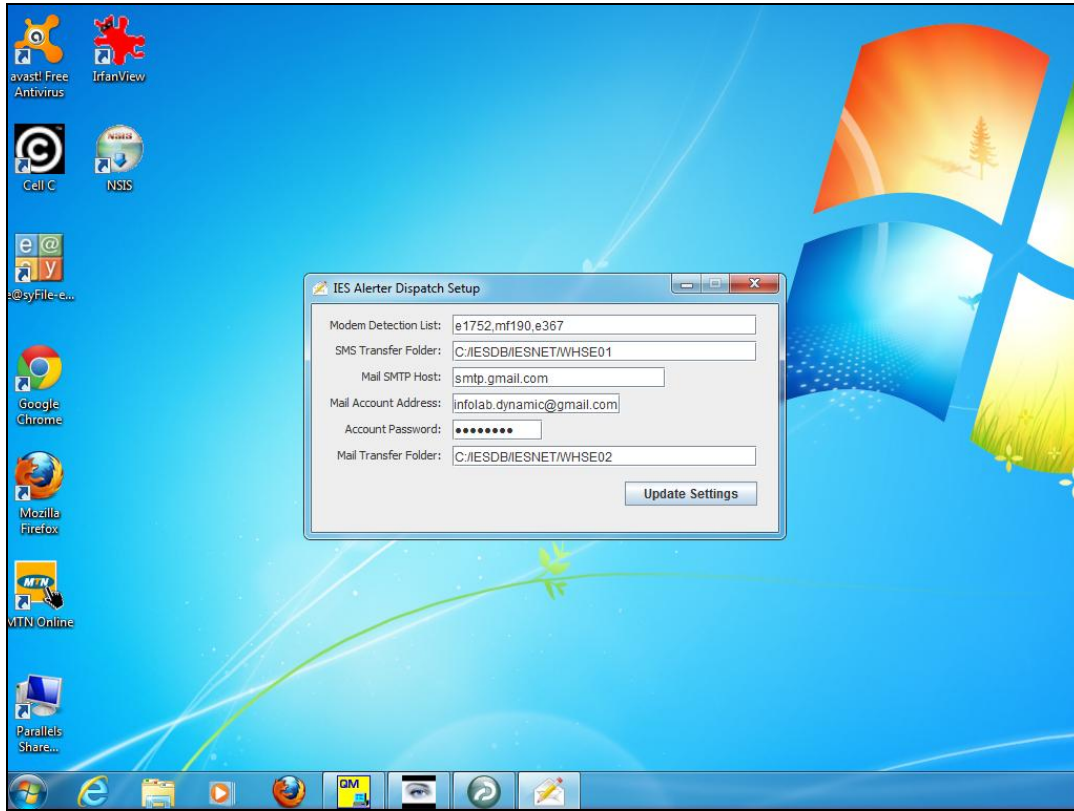


Slide 14

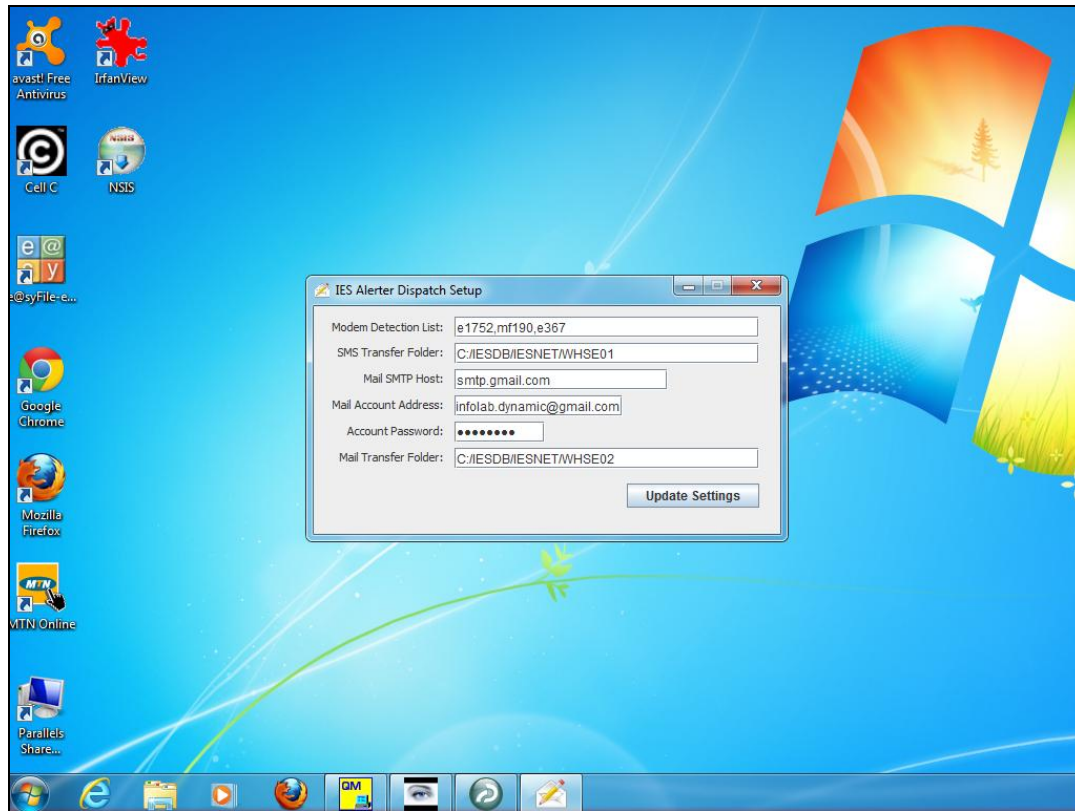
Slide notes: On the setup screen, we need to indicate the SMTP host we will use, the mail account address and the password for that account. It is recommended to use a special Mail Account created for this purpose.



Slide 15
Slide notes:

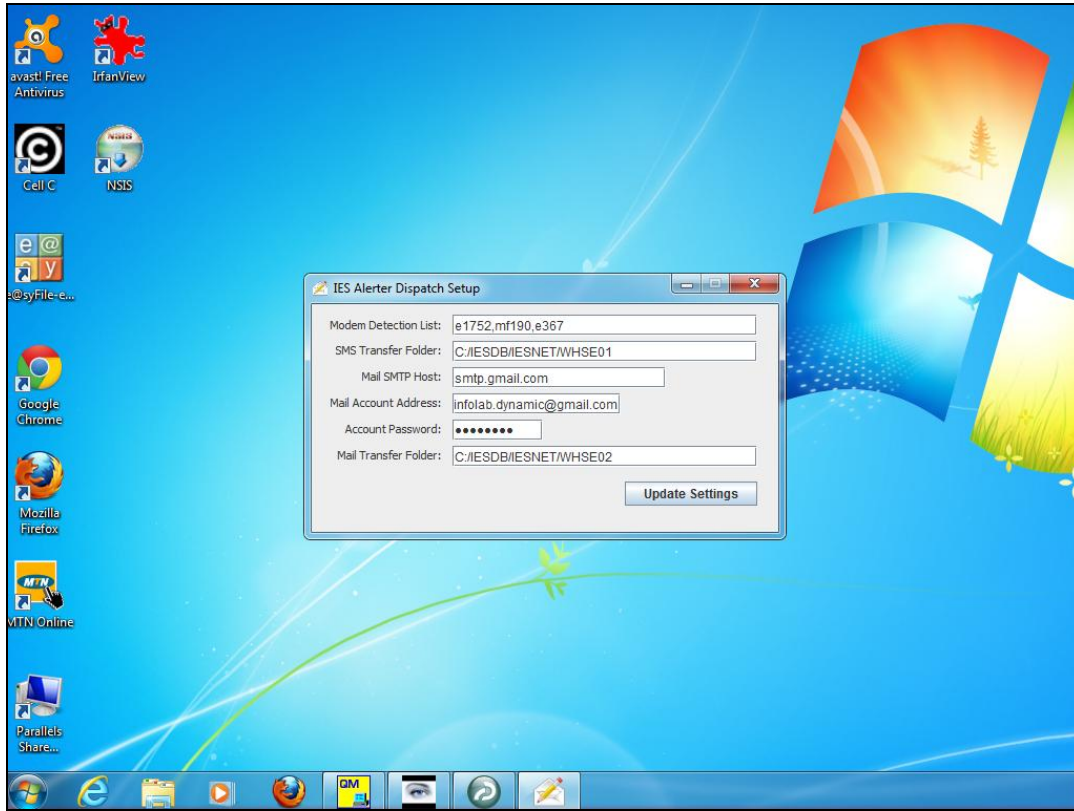


Slide 16
Slide notes:

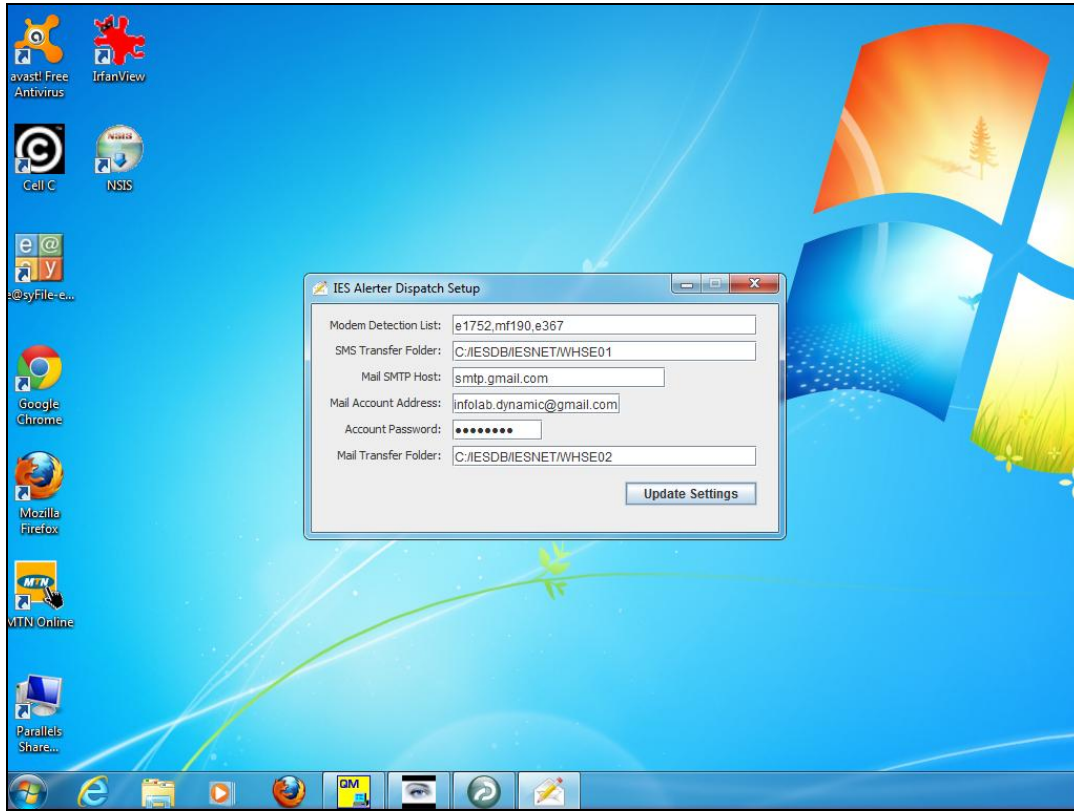


Slide 17

Slide notes: Once the Mail account details are properly specified, an internet connection is available, and read/write access to the Mail Transfer Folder is available. Then, when Alerter Dispatch is run, it can dispatch e-mails.



Slide 18
Slide notes:



Slide 19
Slide notes: