



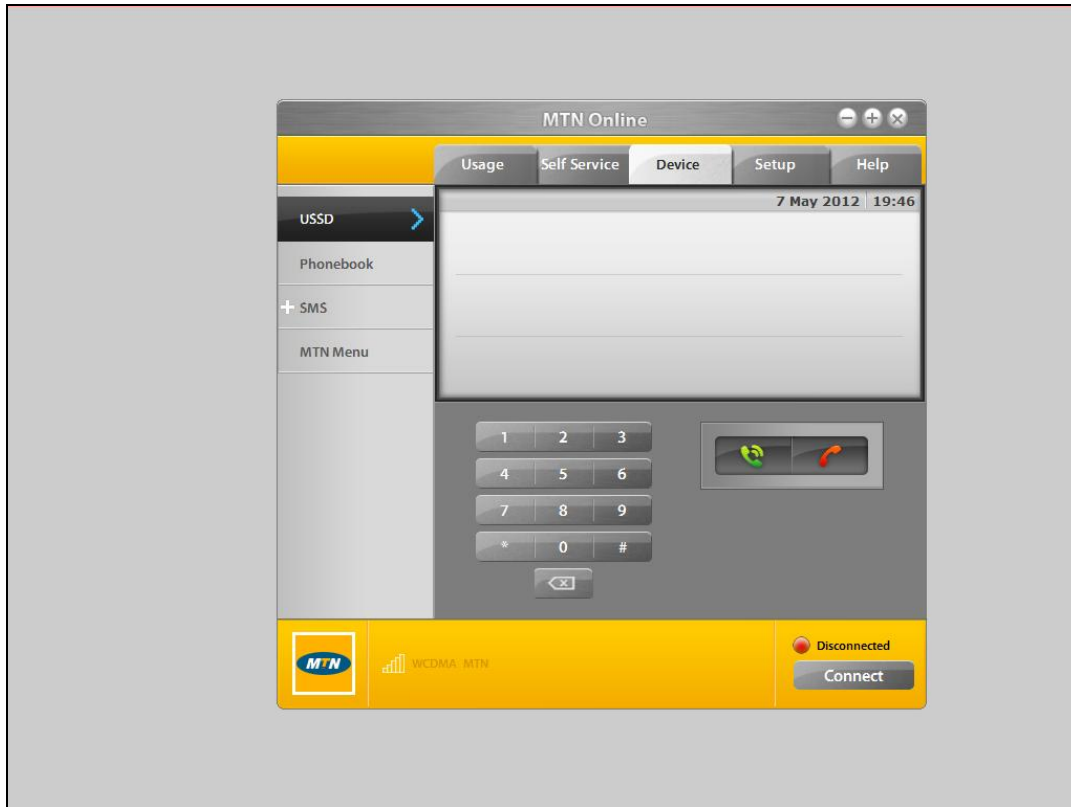
Slide 1

Slide notes: Alerter Dispatch can be used for e-mail only, for SMS only, or for both. When we wish to use the SMS service, then we will install the modem, typically a usb modem with a SIM card, typically provided by a local Mobile Operator.



Slide 2

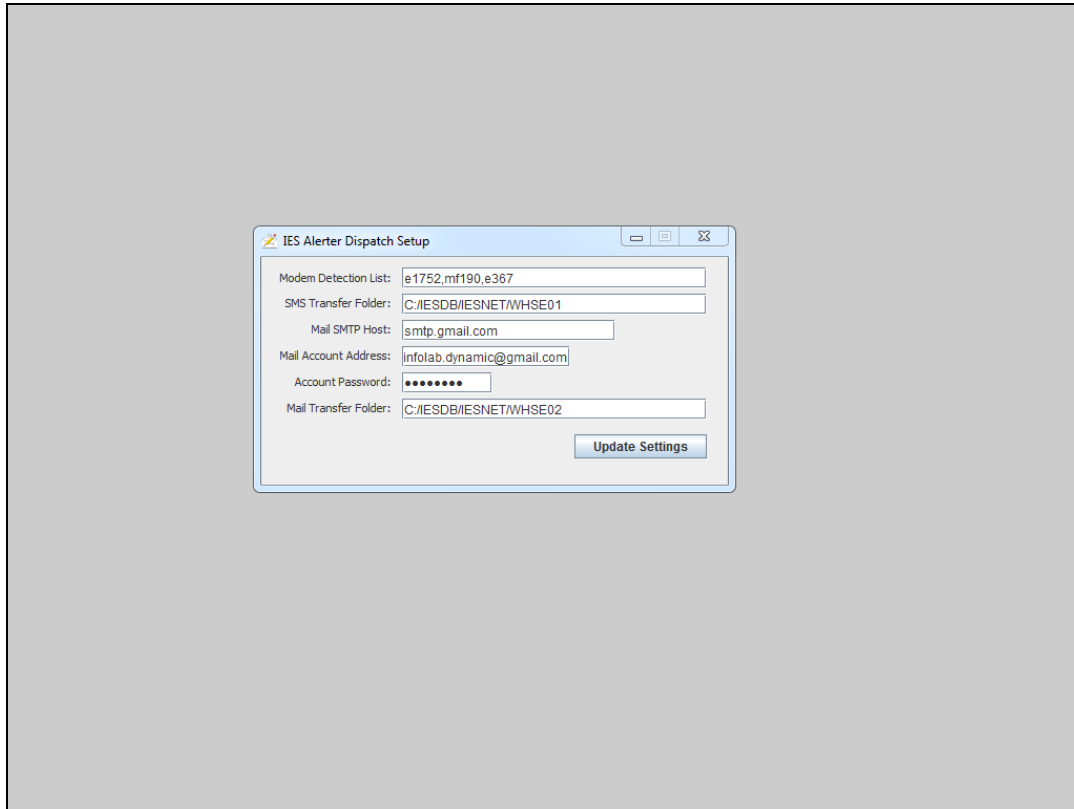
Slide notes: When the modem is plugged in for the 1st time, it will usually enter an automatic setup sequence for the Mobile Operator software. We should complete this process and fully install the Mobile Operator's software.



Slide 3

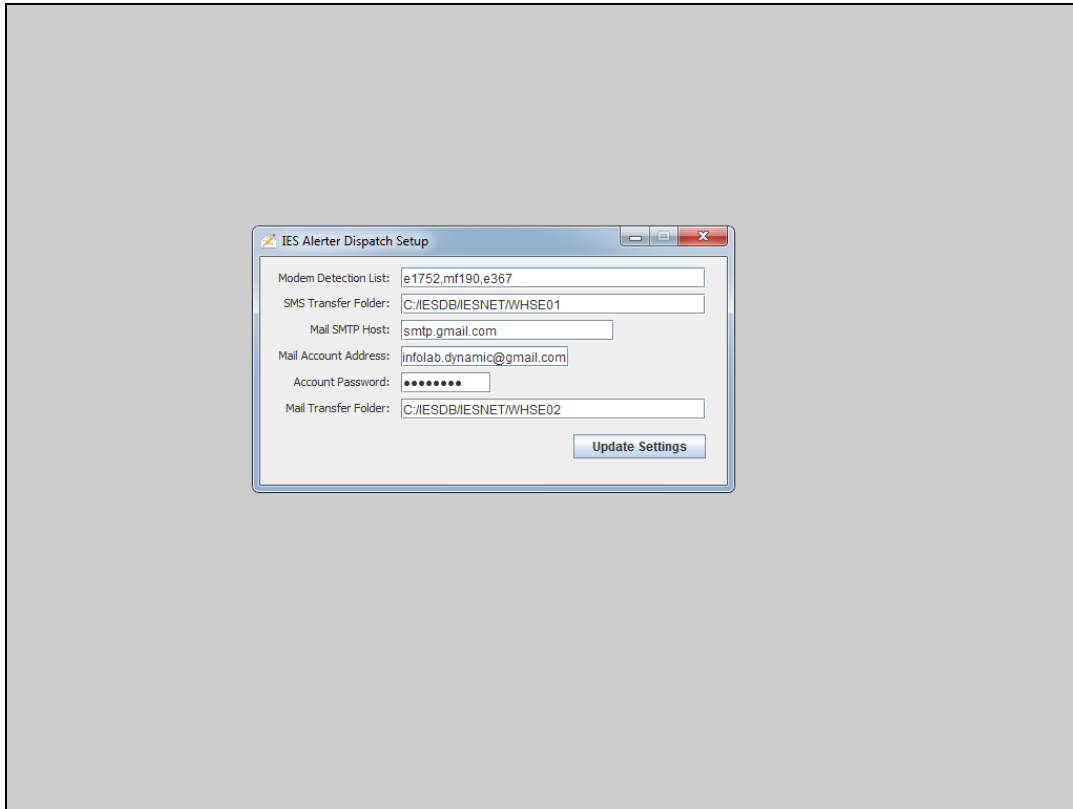
Slide notes: Once the software is fully operational, it can usually be used to check the balance, top up the balance, etc. Of course there should always be a balance sufficient for sending the SMS messages passing through Alerter Dispatch.

Before we actually use the modem with Alerter Dispatch, we will disconnect the Mobile Operator software, i.e. close it, so that it will release the modem from the COM port, and thereby enable Alerter Dispatch to acquire it.

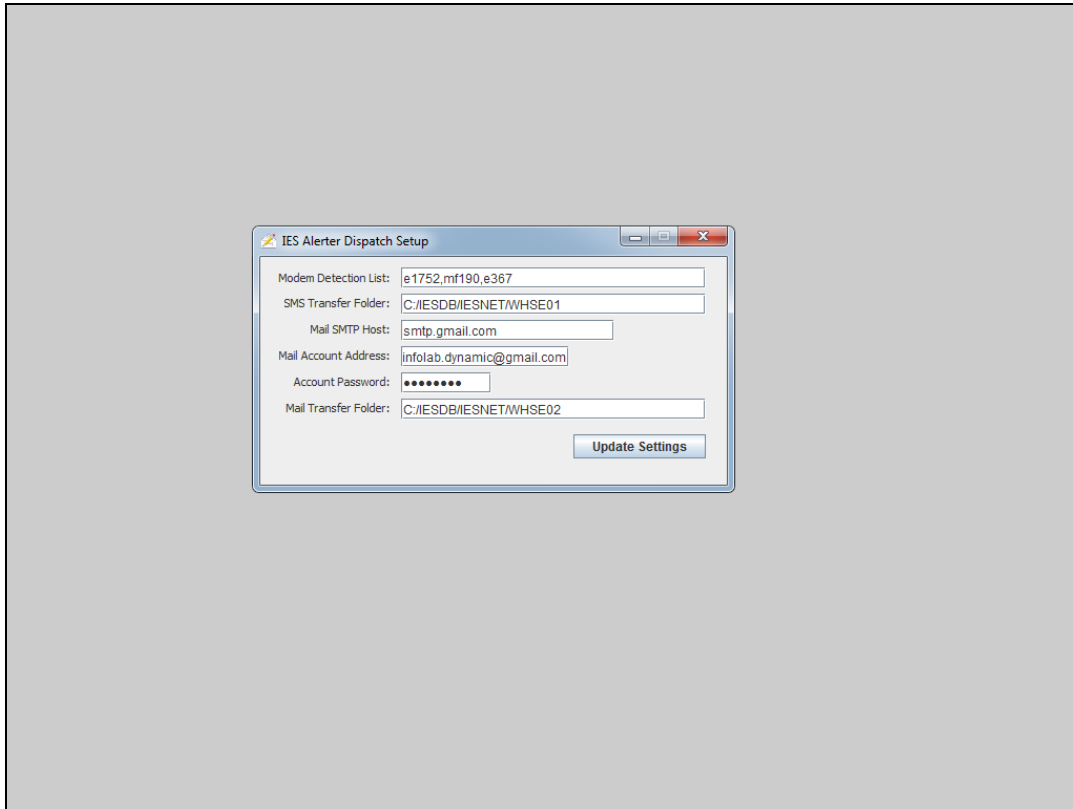


Slide 4

Slide notes: At the Alerter Dispatch setup, we need to indicate the type of modem we are using. By default, Alerter Dispatch indicates the most common modems currently in use, but if our modem is not one of these, or we suspect it is not, then we can use the SCAN option (see the SCAN tutorial for that) to identify the correct type of our modem and indicate it at the settings.



Slide 5
Slide notes:



Slide 6
Slide notes: