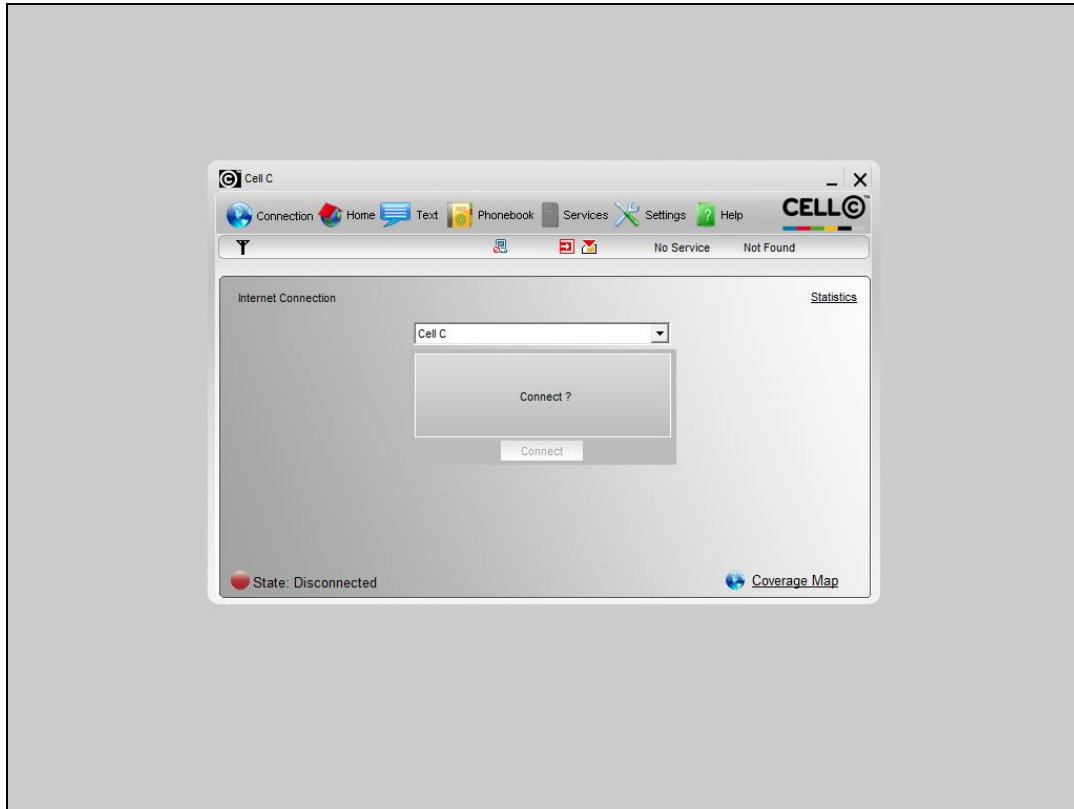




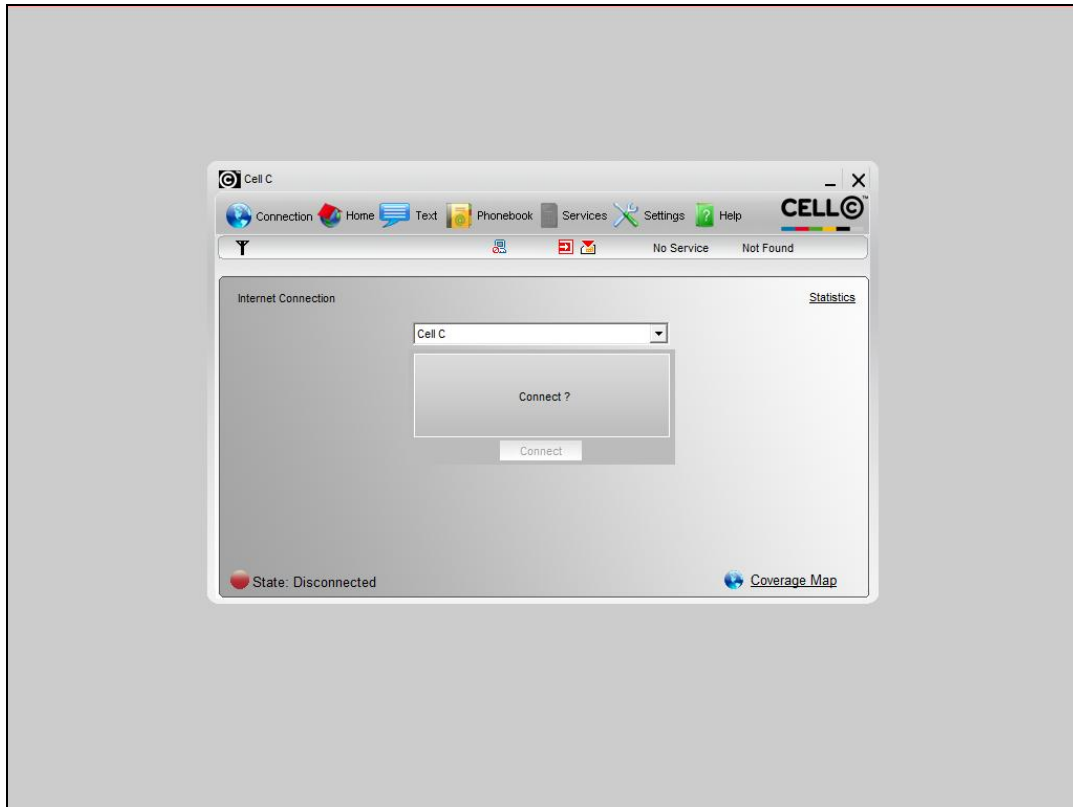
Slide 1

Slide notes: If we are using the SMS service by Alerter Dispatch, then we are using a modem typically provided by our Mobile Operator. Before we start Alerter Dispatch, the 1st step is to plug in this modem.



Slide 2

Slide notes: This will typically result in a sensing of the Mobile Operator software, and this software will also attach the COM port for the modem.



### Slide 3

Slide notes: As such, we need to close this software in order to release the modem COM port, and then only do we start the Alerter Dispatch, which is then able to sense the modem COM port and use it.