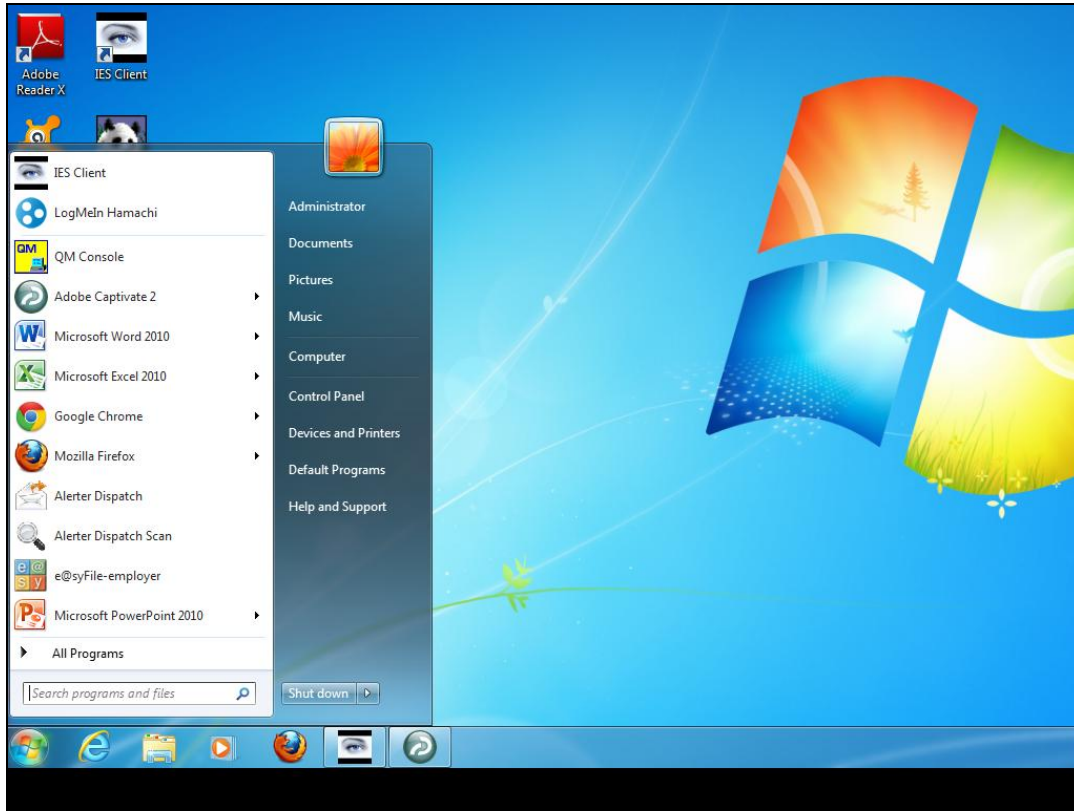
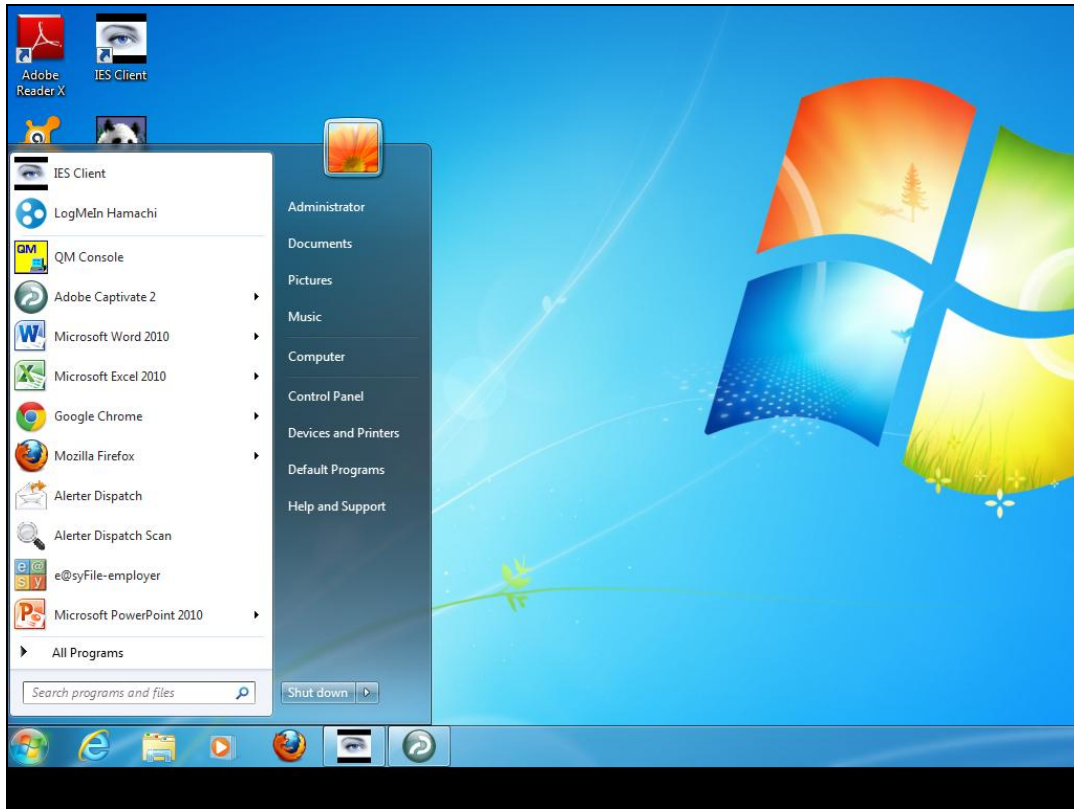


Slide 1

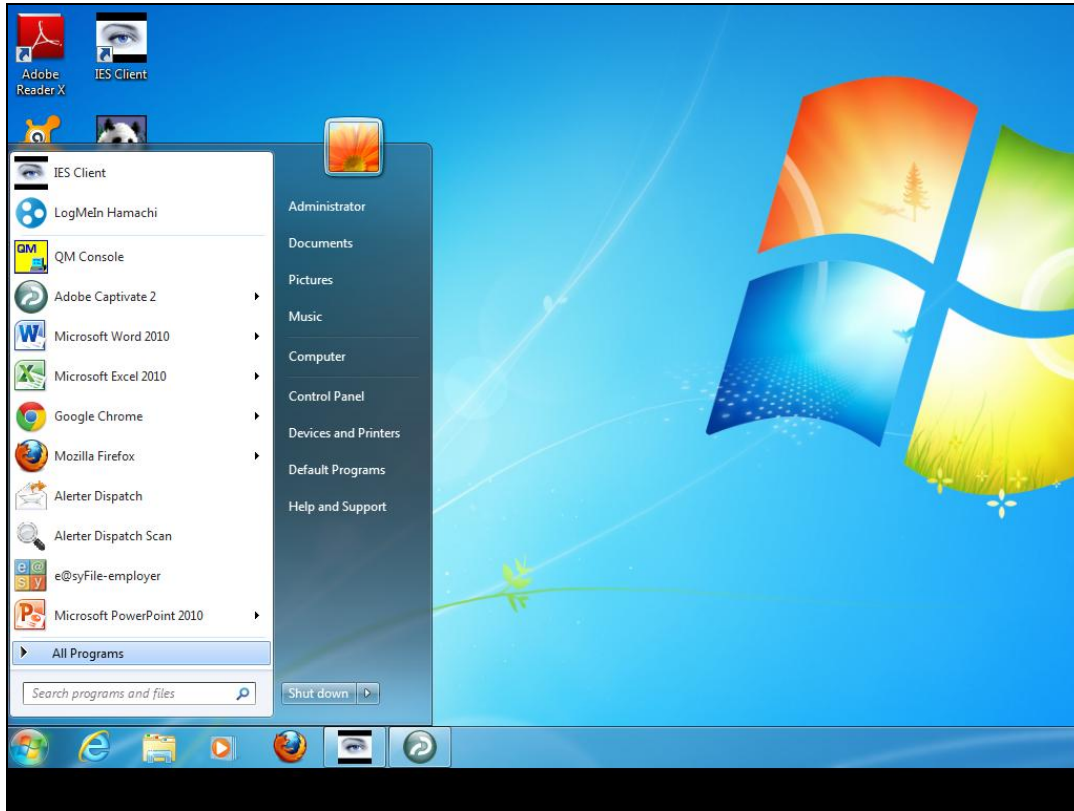
Slide notes: Before we can use Alerter Dispatch, we need to confirm our settings for operation. For this, we use Alerter Dispatch Setup.



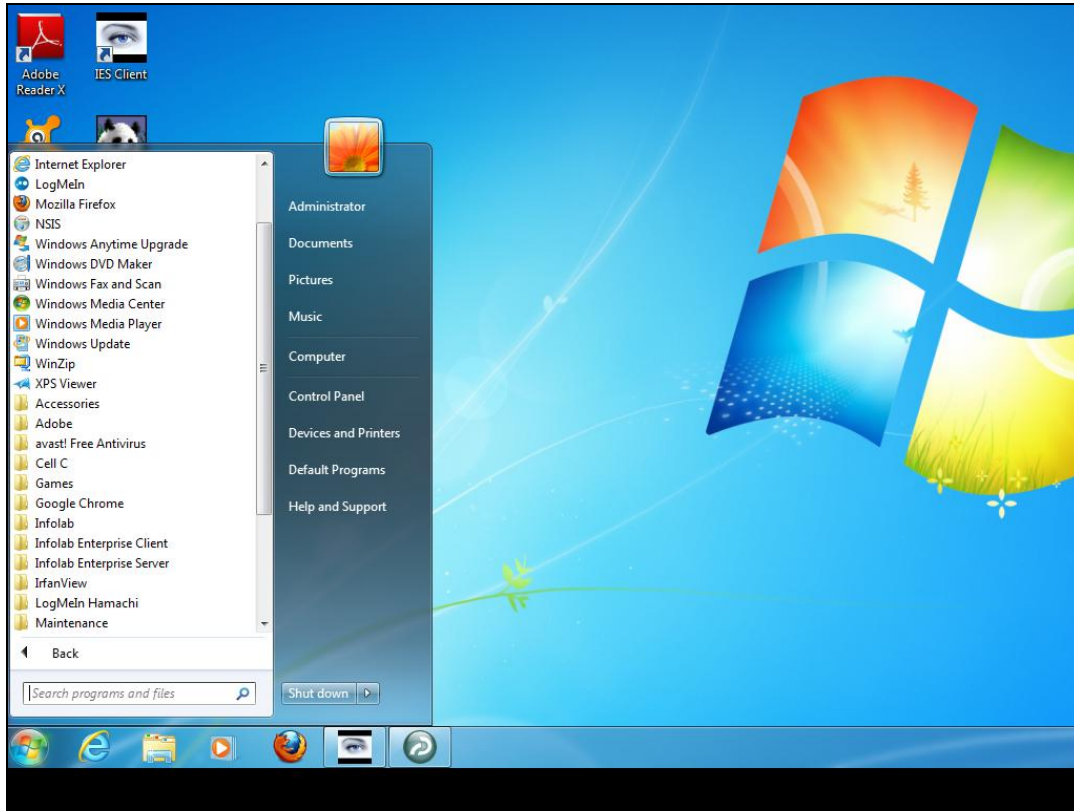
Slide 2
Slide notes:



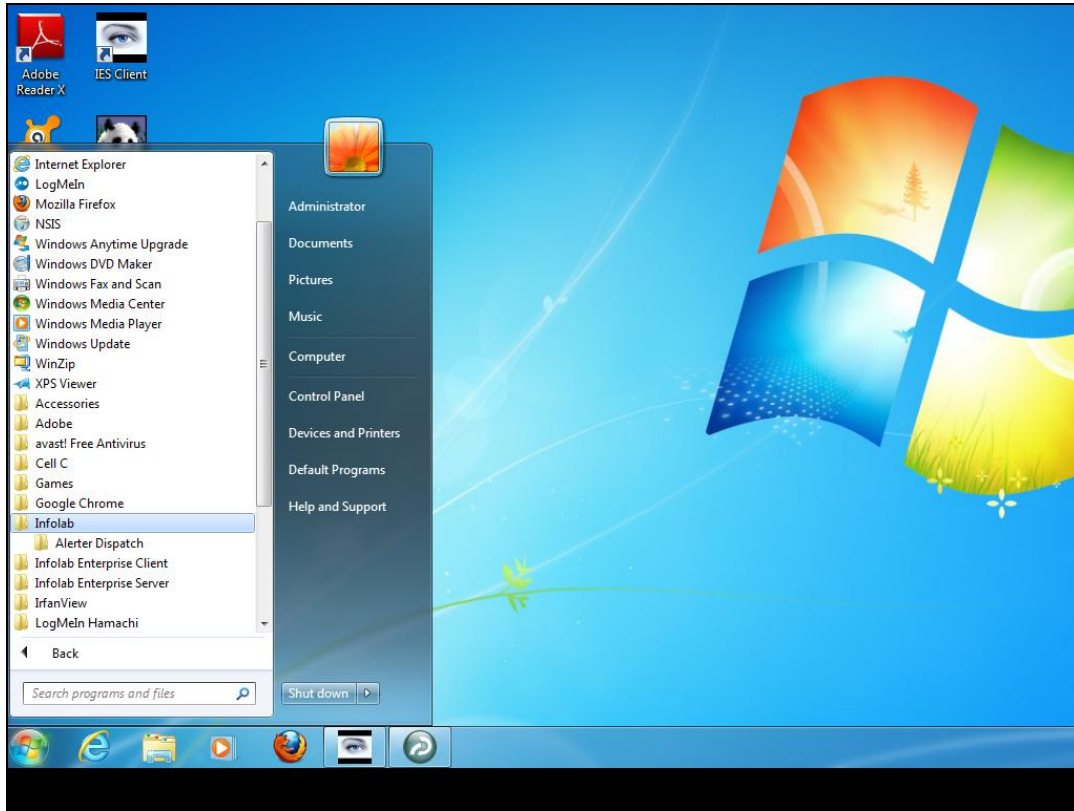
Slide 3
Slide notes:



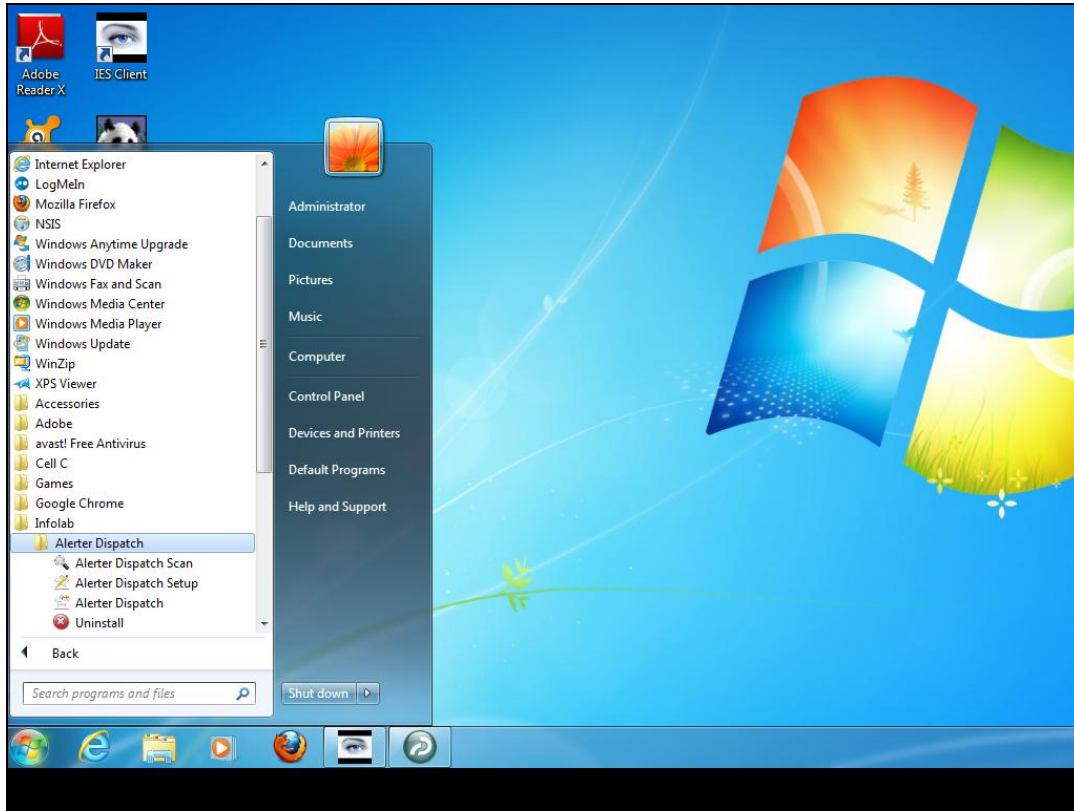
Slide 4
Slide notes:



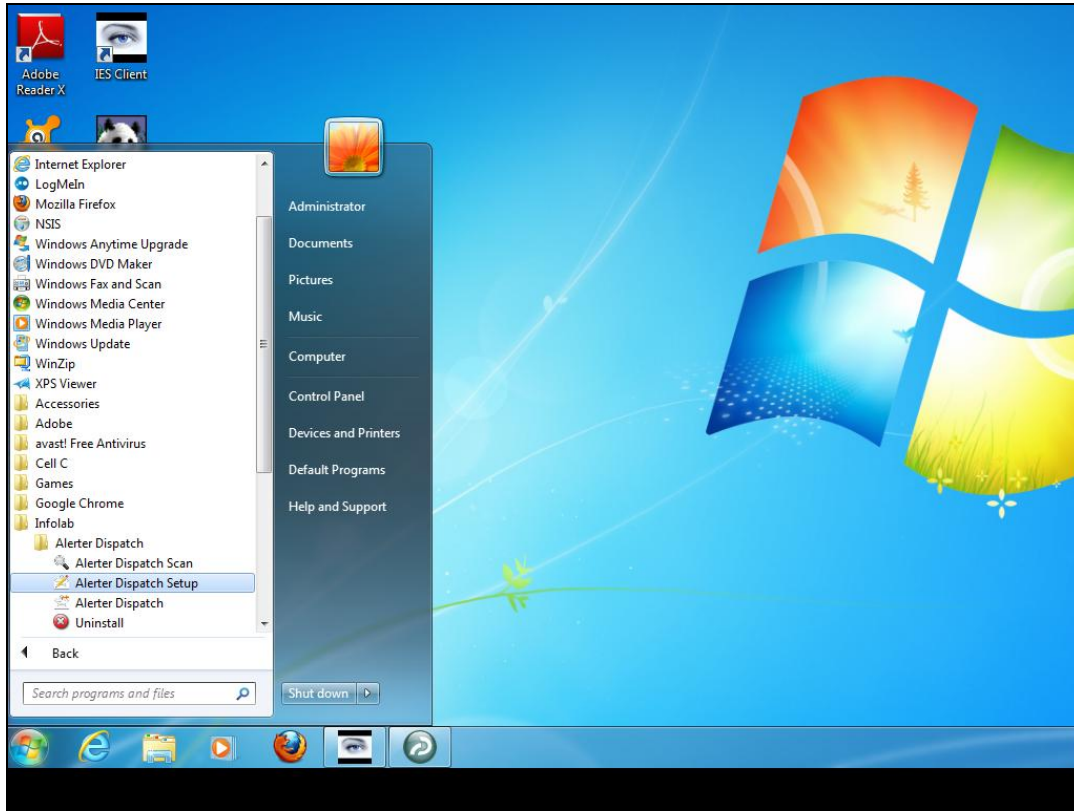
Slide 5
Slide notes:



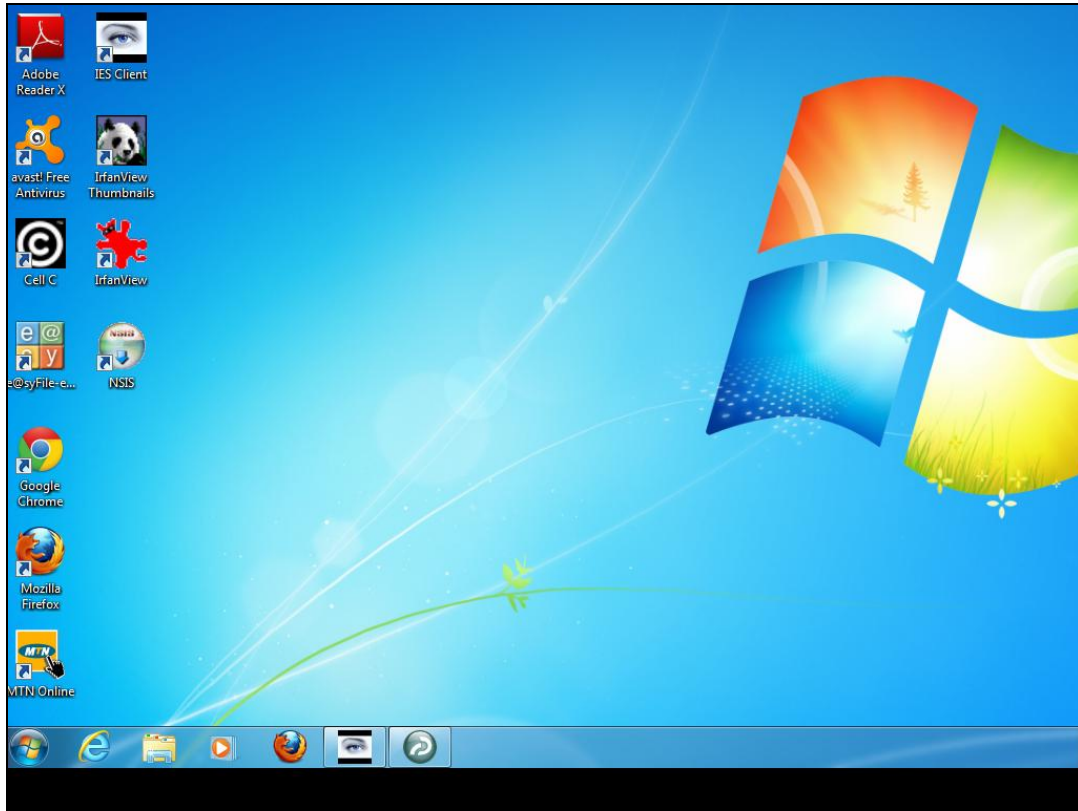
Slide 6
Slide notes:



Slide 7
Slide notes:

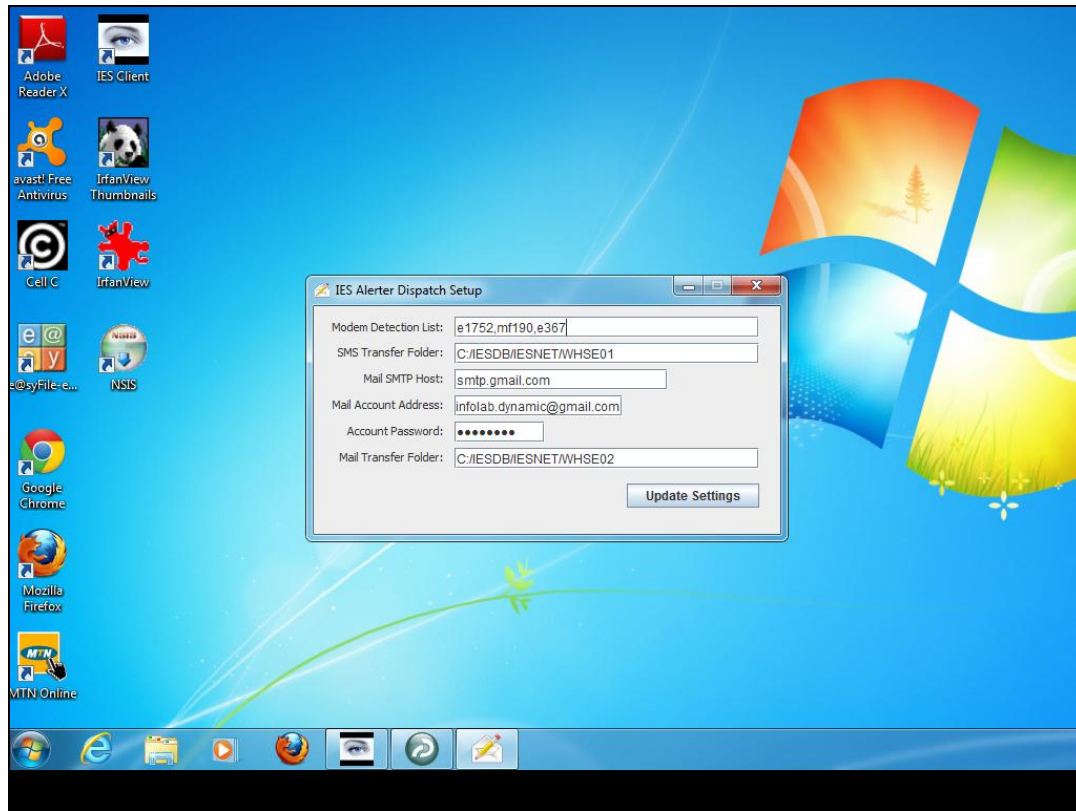


Slide 8
Slide notes:



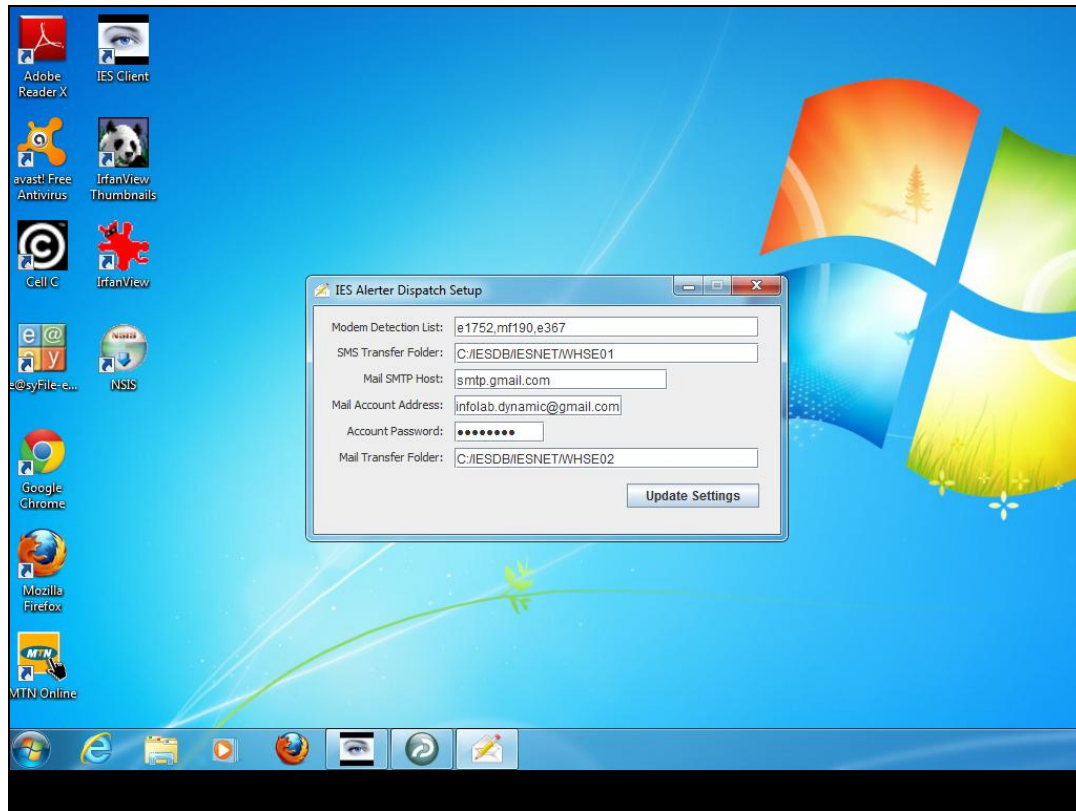
Slide 9

Slide notes:



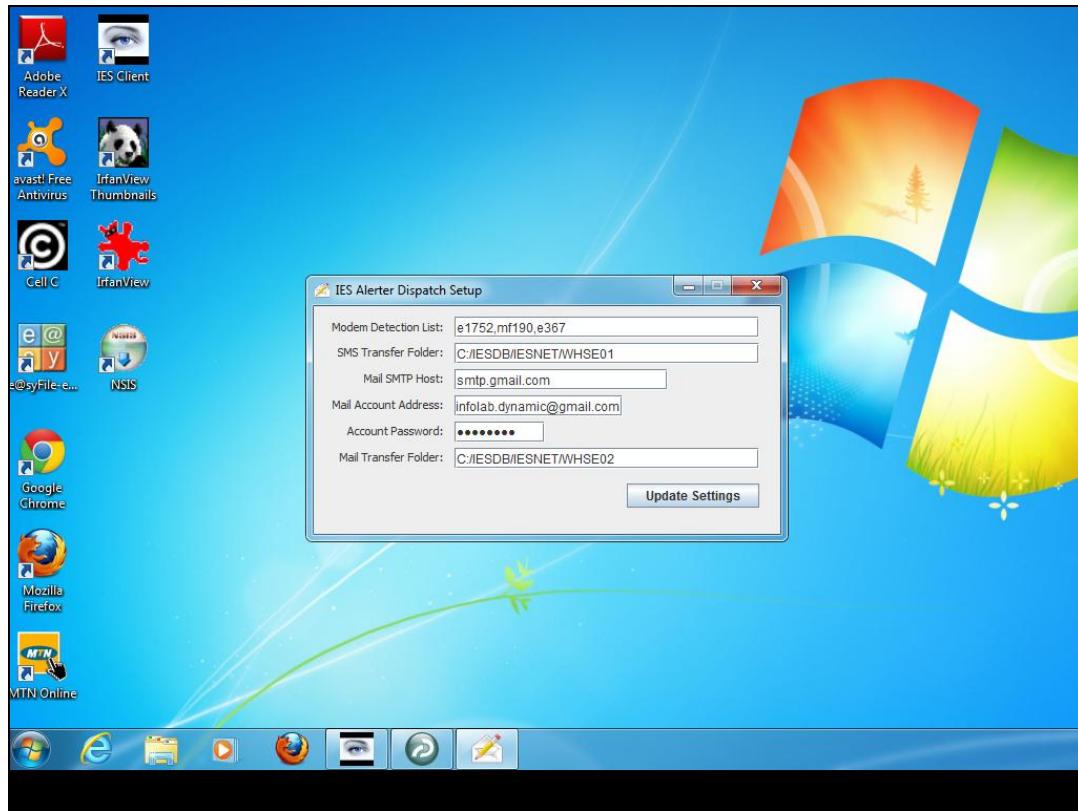
Slide 10

Slide notes: The modem detection list needs only our modem type to be indicated. The default value here indicates the most common modems currently in use, separated by comma. But if necessary, we can scan to find our different modem type and indicate that parameter here.



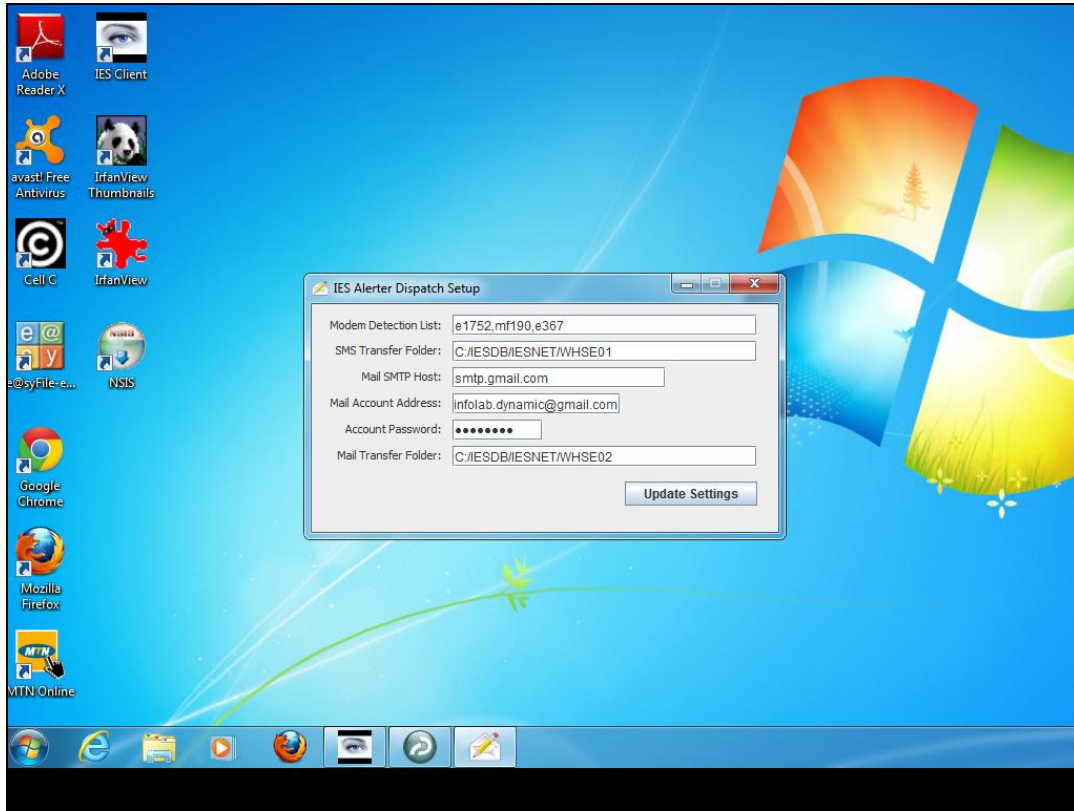
Slide 11

Slide notes: The SMS Transfer folder is essential, even if we do not use SMS, and should point to WHSE01 at the IES Server. Alerter Dispatch, wherever it is running from, must have full read/write access to this folder.



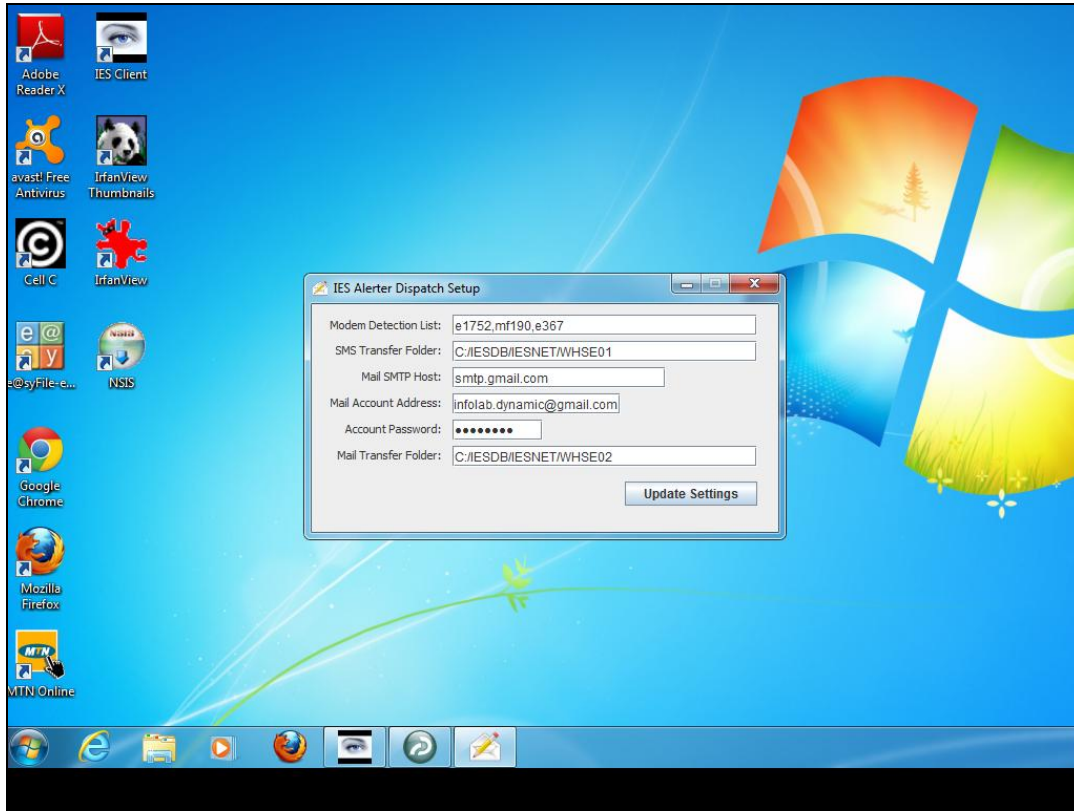
Slide 12

Slide notes: The mail SMTP host must be specified, and is correct if we use a gmail account, otherwise we need to change it.



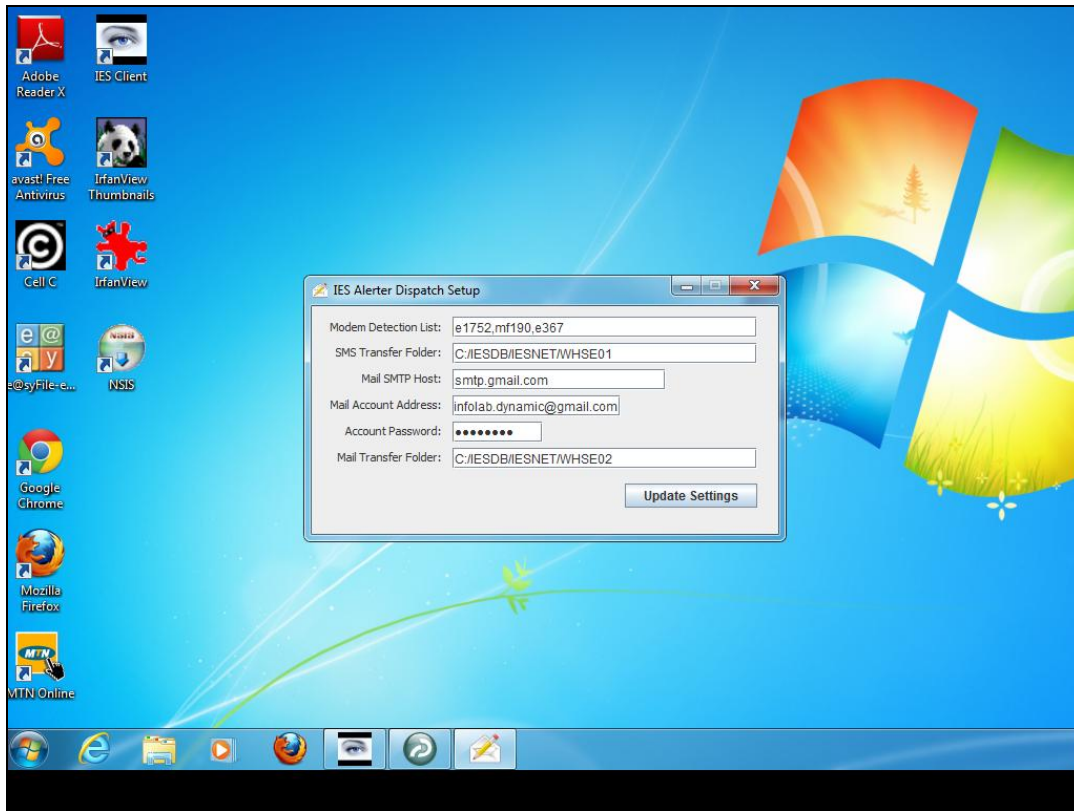
Slide 13

Slide notes: The mail account is the one we specially create for Alerter Dispatch to use.



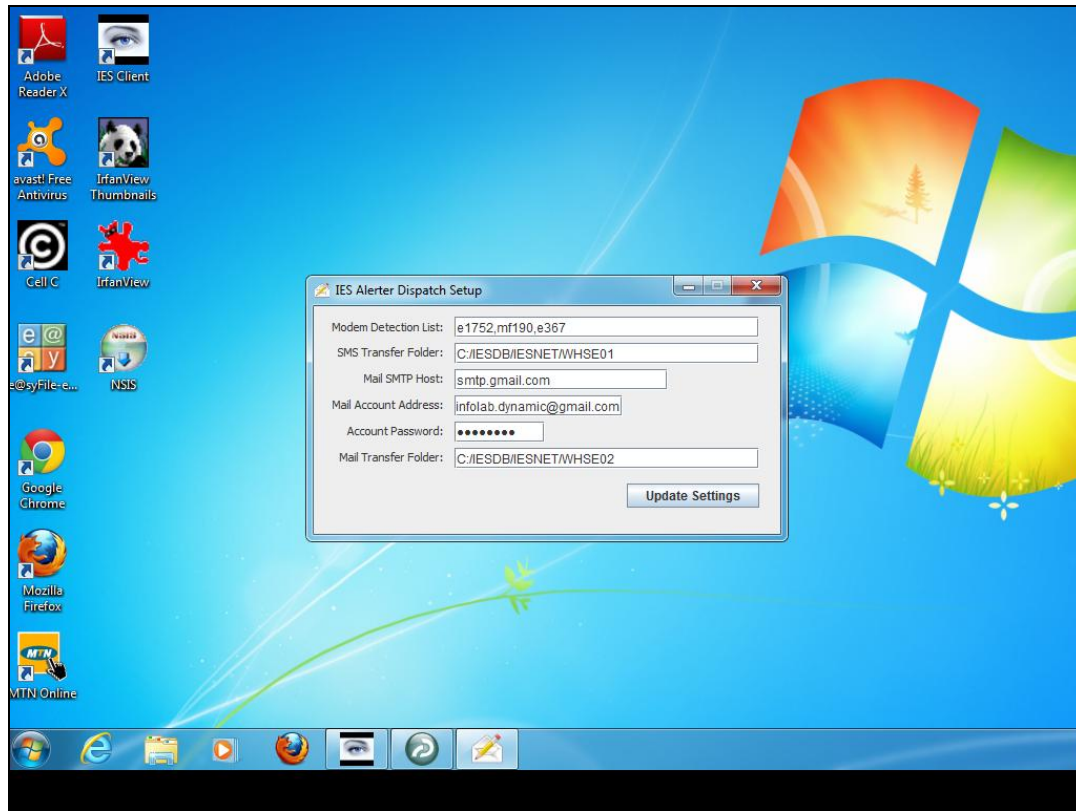
Slide 14

Slide notes: And the correct mail account password is required.



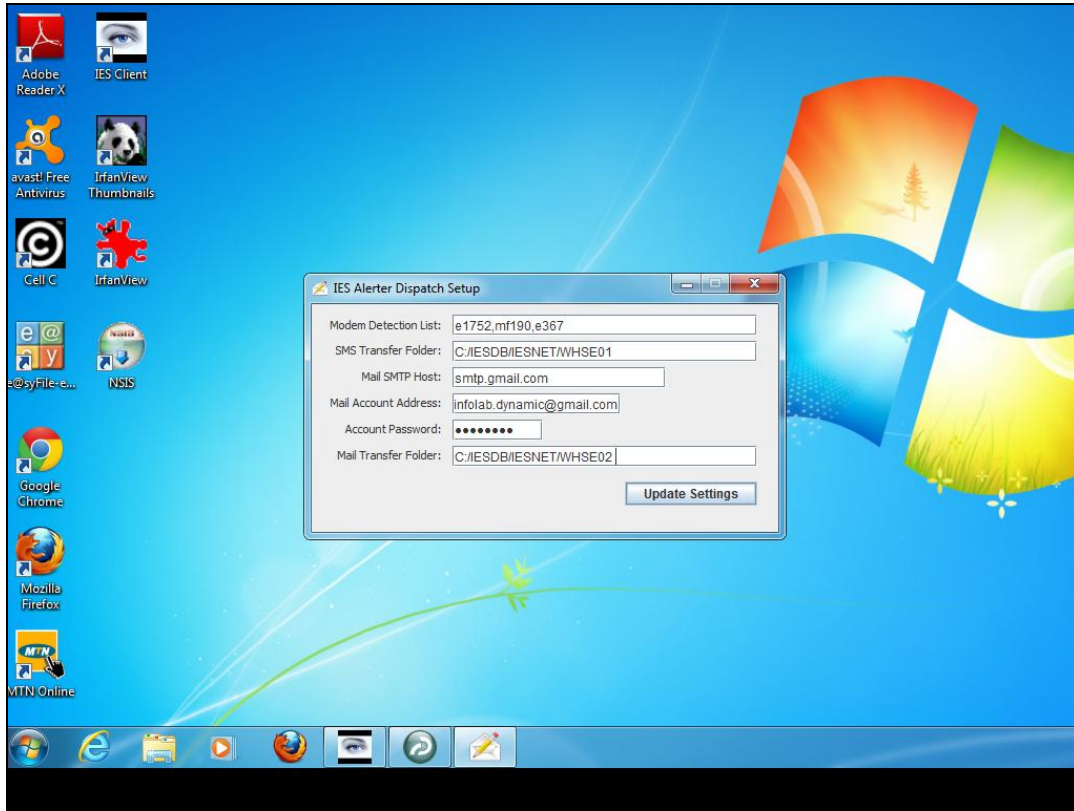
Slide 15

Slide notes: The Mail Transfer folder is essential, even if we do not use e-mail, and should point to WHSE02 at the IES Server. Alerter Dispatch, wherever it is running from, must have full read/write access to this folder.



Slide 16

Slide notes: 'Update Settings' will update the current settings for Alerter Dispatch.



Slide 17
Slide notes: