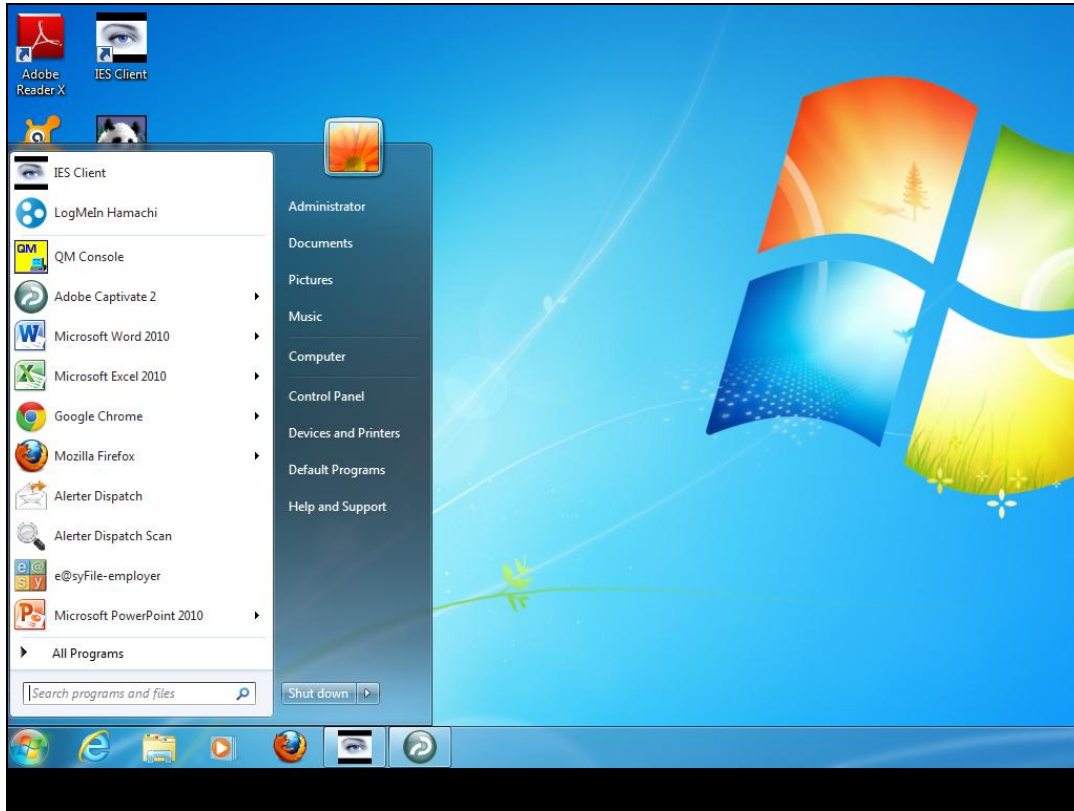
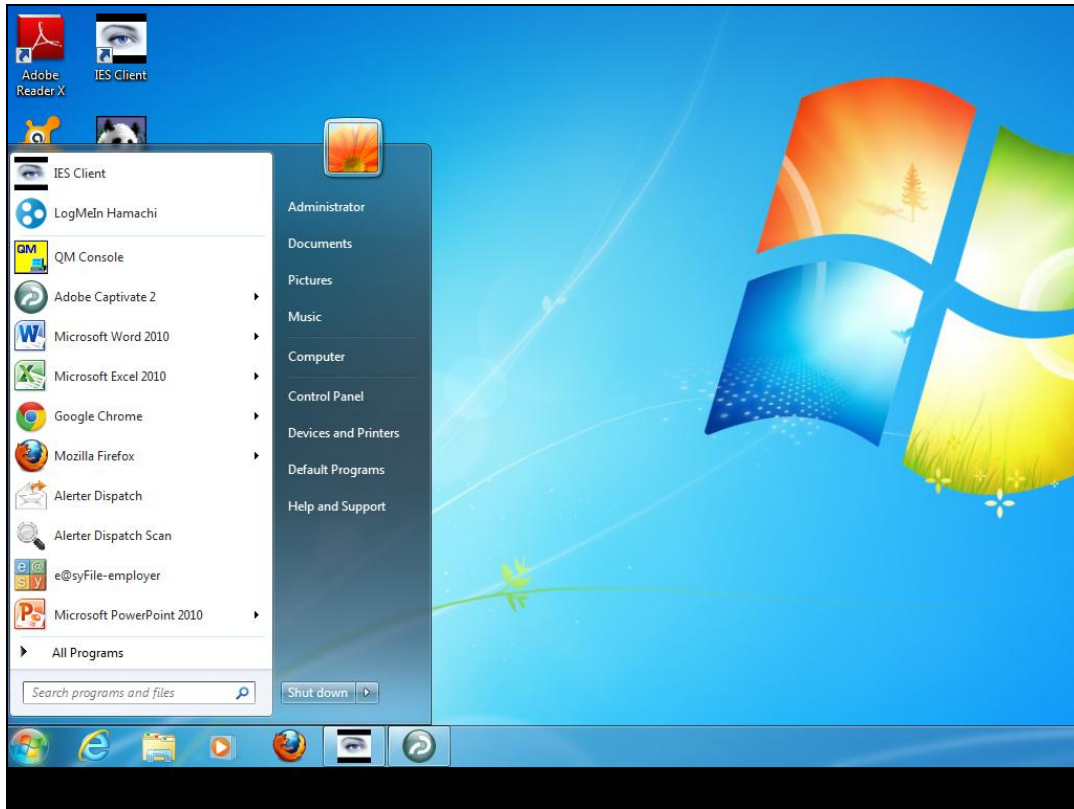


Slide 1

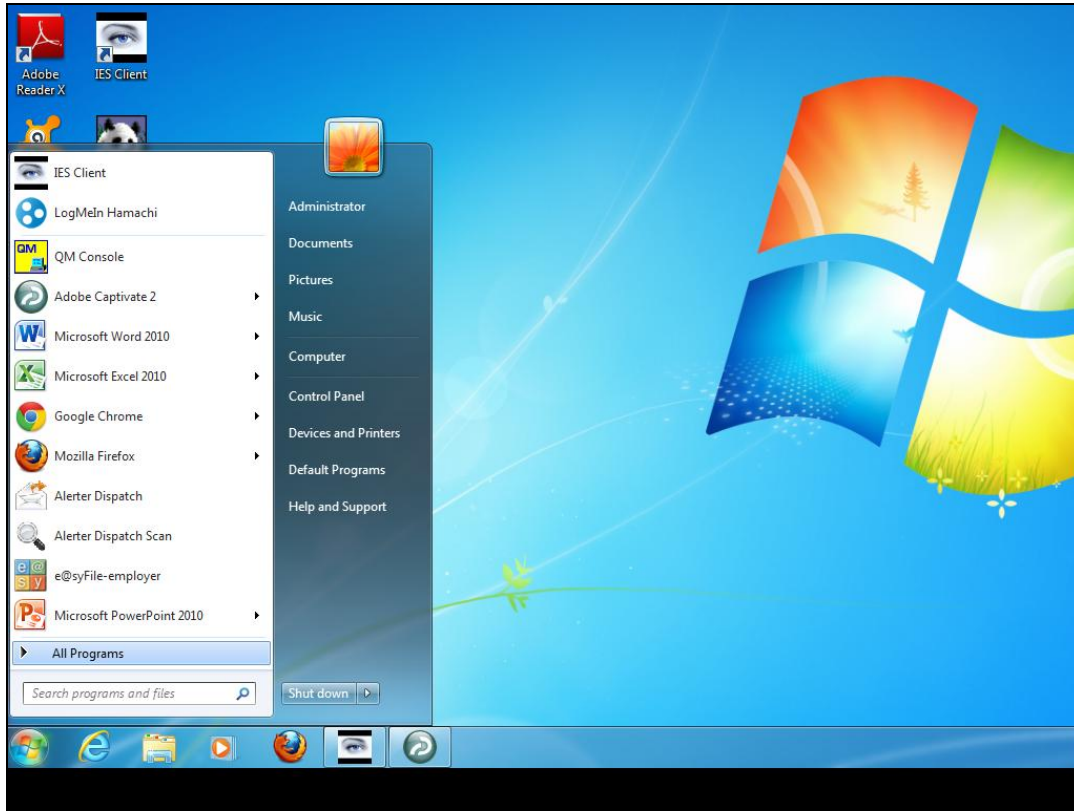
Slide notes: If Alerter Dispatch is in use, we will ensure it is always running when IES server is running. Before we start it, if SMS is in use, we will plug in the SMS modem, disconnect the Mobile Provider software to release the SMS COM port, and then start Alerter Dispatch.



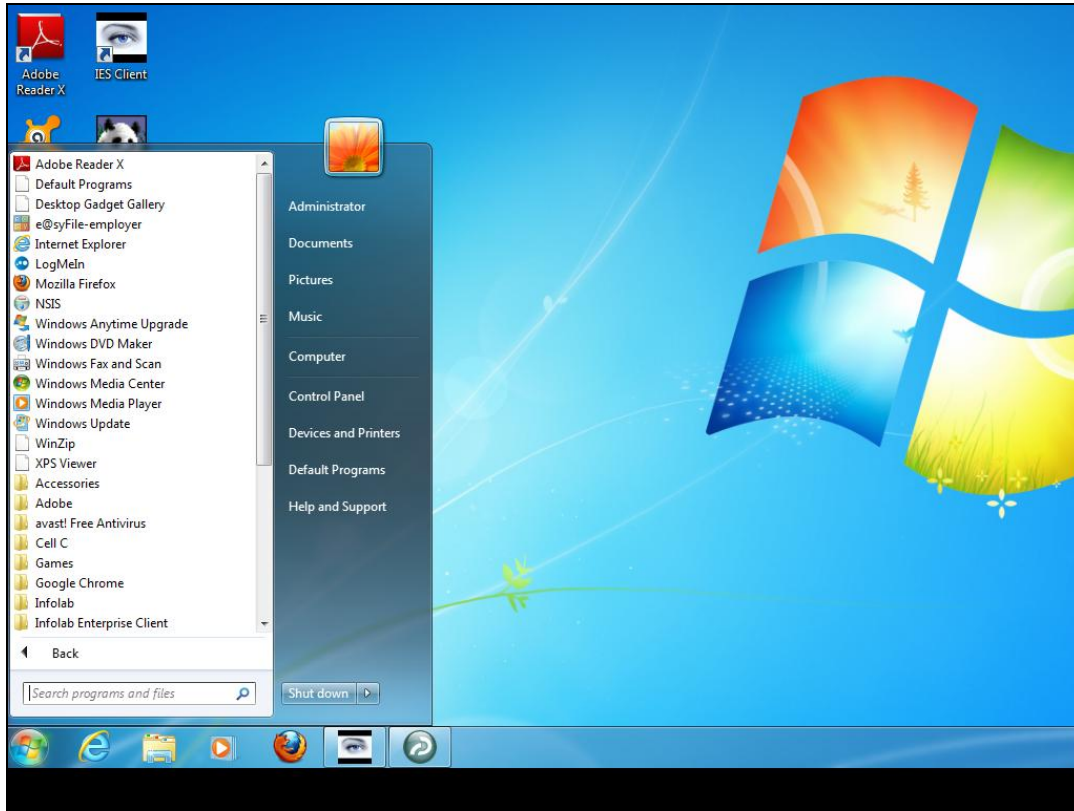
Slide 2
Slide notes:



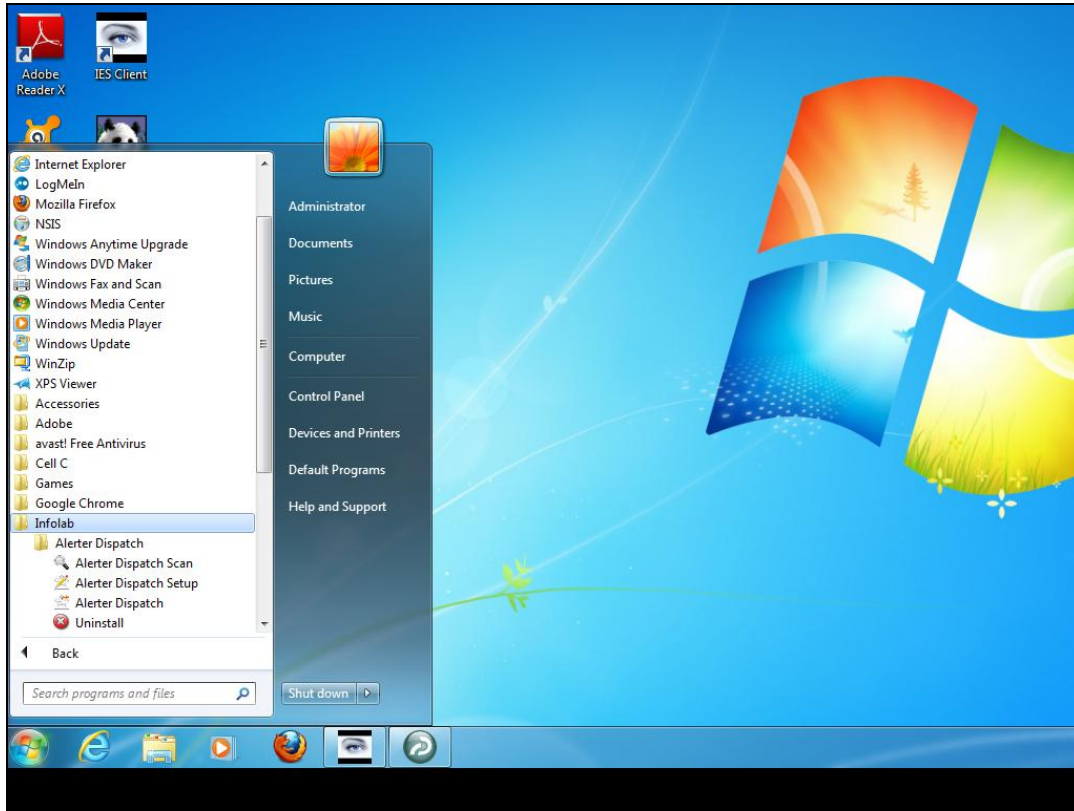
Slide 3
Slide notes:



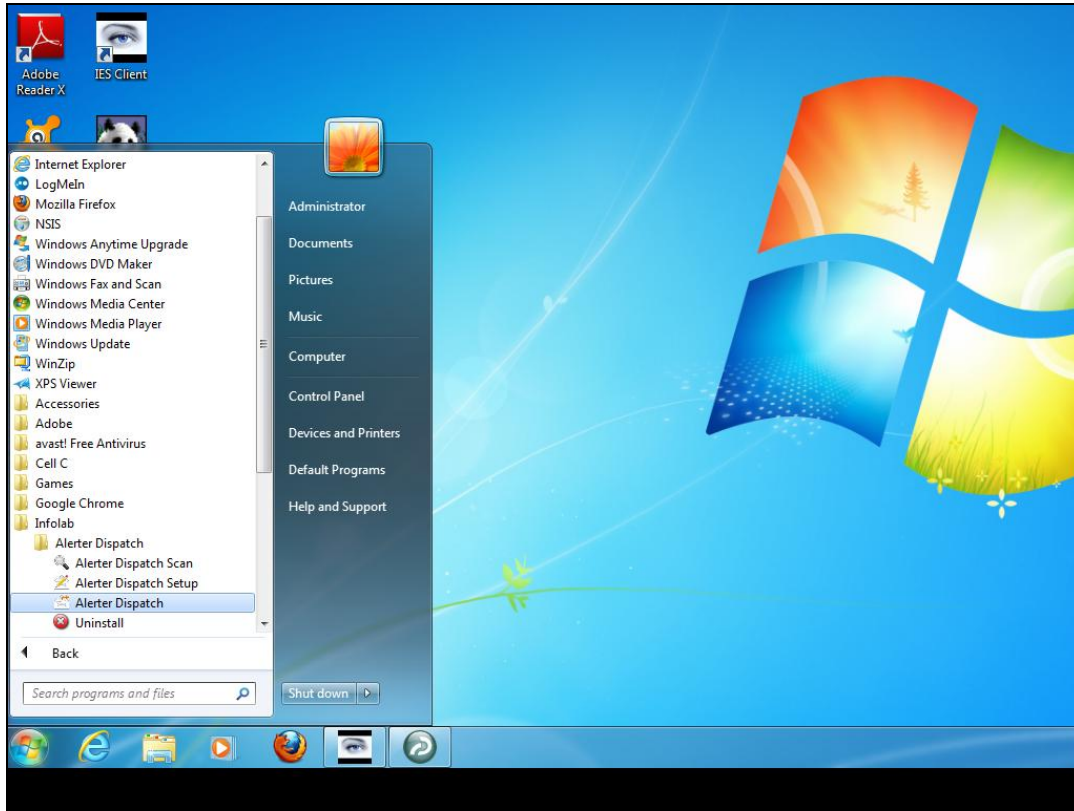
Slide 4
Slide notes:



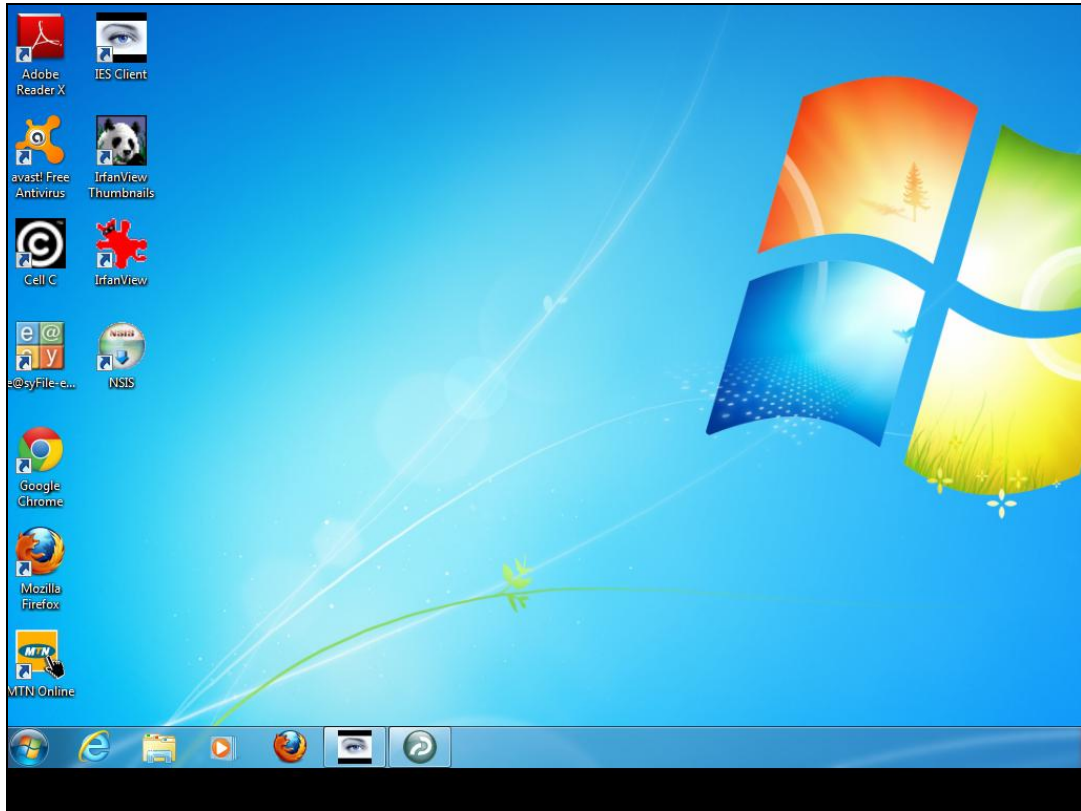
Slide 5
Slide notes:



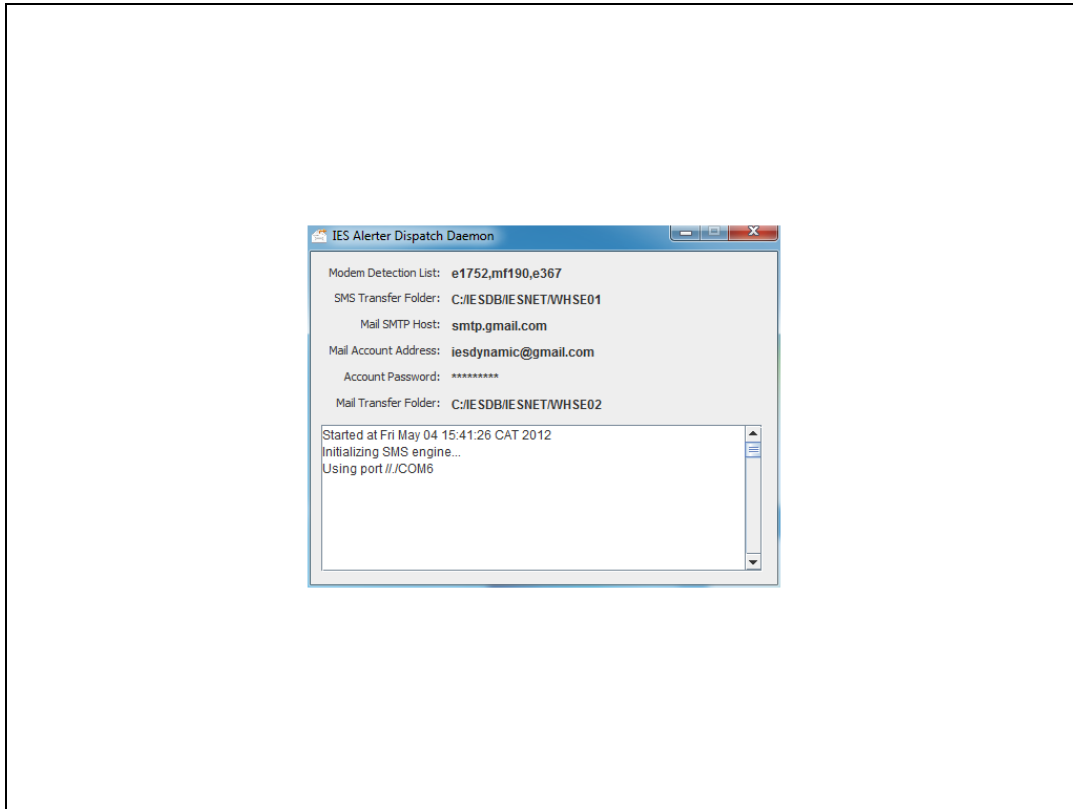
Slide 6
Slide notes:



Slide 7
Slide notes:

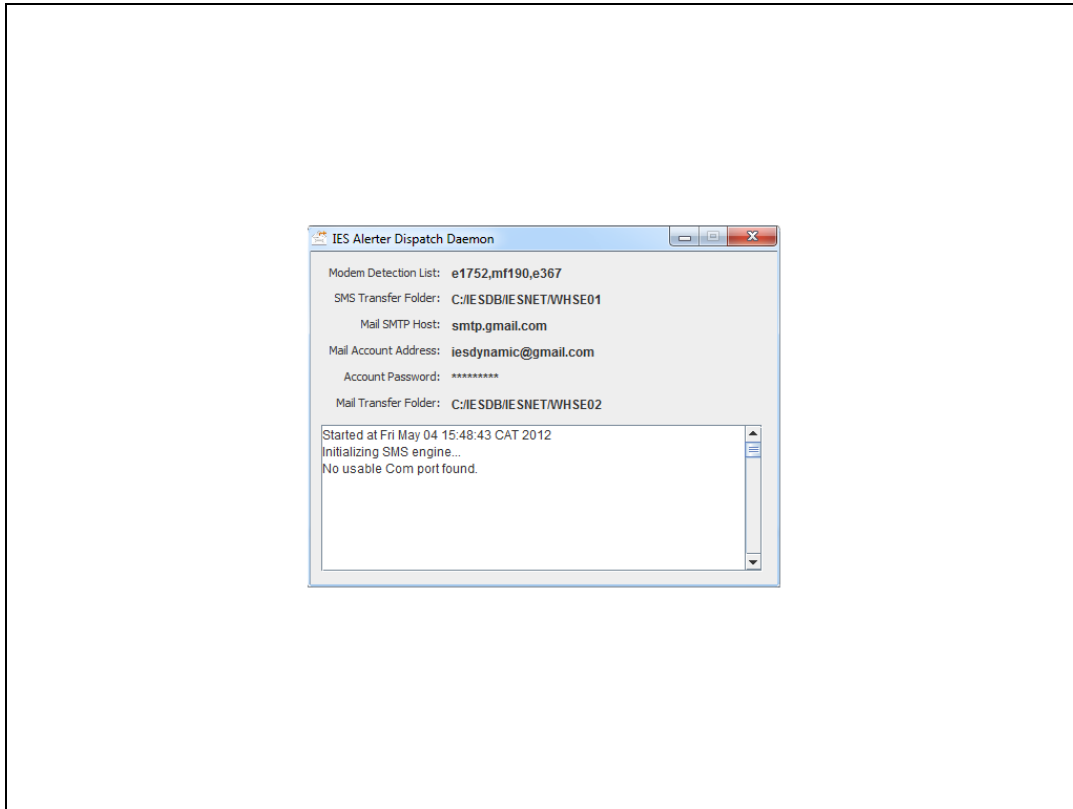


Slide 8
Slide notes:



Slide 9

Slide notes: As shown here, we are in fact using the SMS modem and it is running at COM6.



Slide 10

Slide notes: In this example, we are using e-mail but not SMS, and therefore there is no COM port active for Alerter Dispatch.