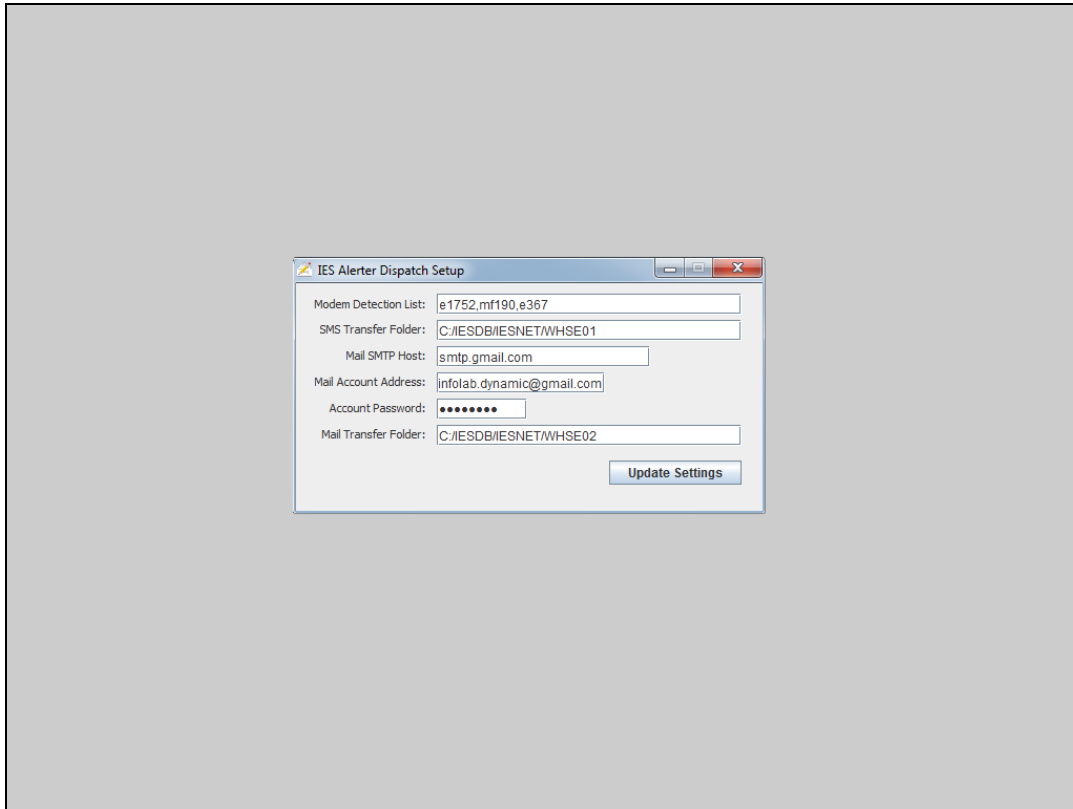
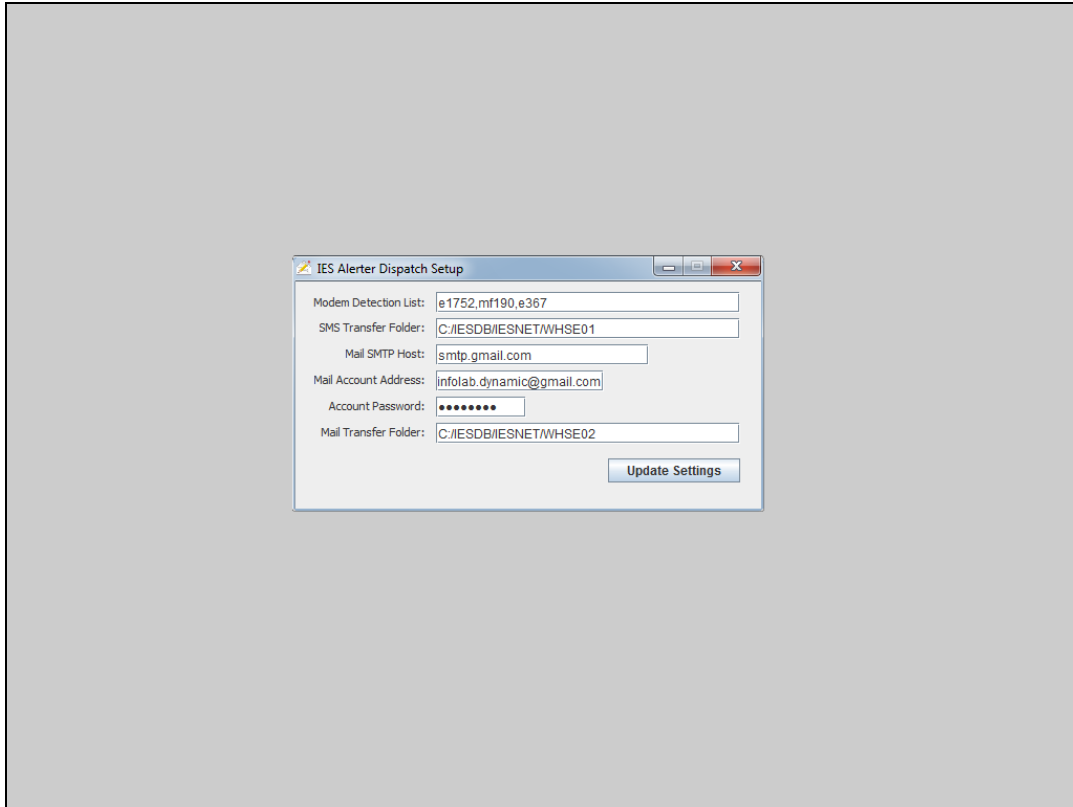


#### Slide 1

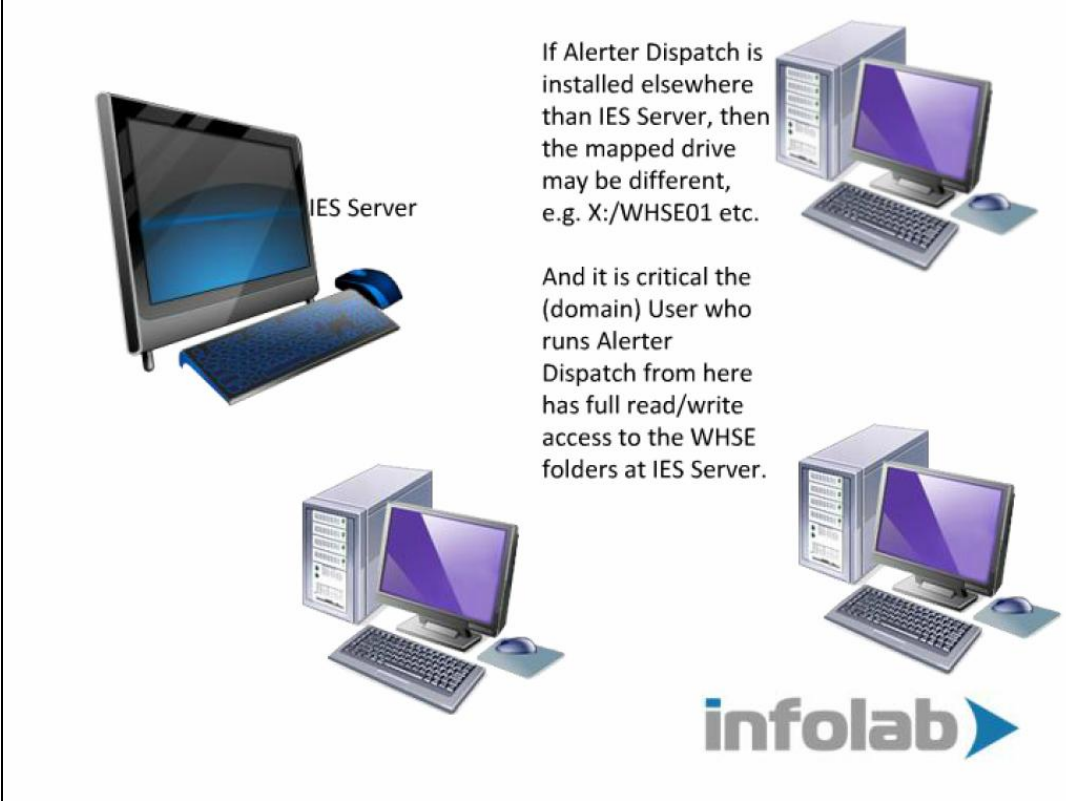
Slide notes: At the Alerter Dispatch settings, we have an address for the SMS Transfer Folder, and also the Mail Transfer Folder. Regardless of whether e-mail or sms or both are in use, it is essential that the Alerter Dispatch program has full read/write access to these folders.



Slide 2  
Slide notes:




Slide 3  
Slide notes:



IES Server

If Alerter Dispatch is installed elsewhere than IES Server, then the mapped drive may be different, e.g. X:/WHSE01 etc.

And it is critical the (domain) User who runs Alerter Dispatch from here has full read/write access to the WHSE folders at IES Server.



## Slide 1

Slide notes: Alerter Dispatch may be installed on the IES Server itself, in which case the settings we have shown would be correct if IESDB is installed on the C drive. However, the settings can be changed to point correctly, as necessary, and if Alerter Dispatch is installed on another machine, then the folders may be pointed through a mapped drive.