



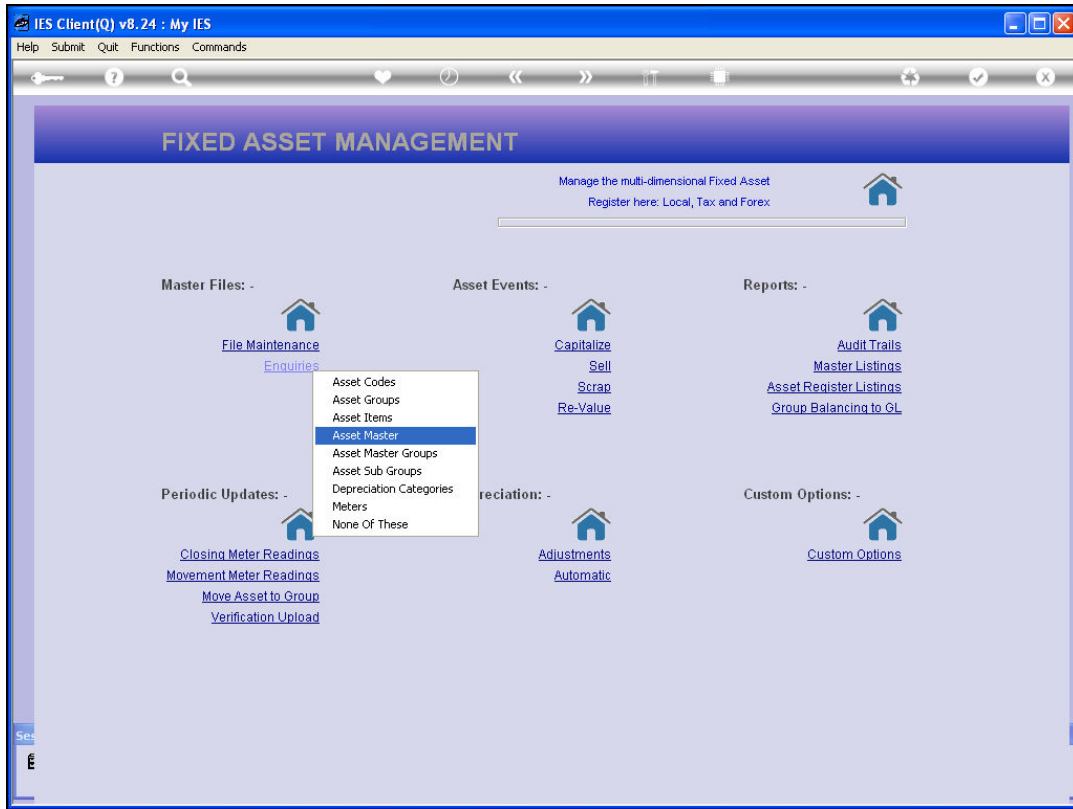
Slide 1

Slide notes: The Asset Master Enquiry option is useful to reveal various views of the Asset and it's Asset Items.

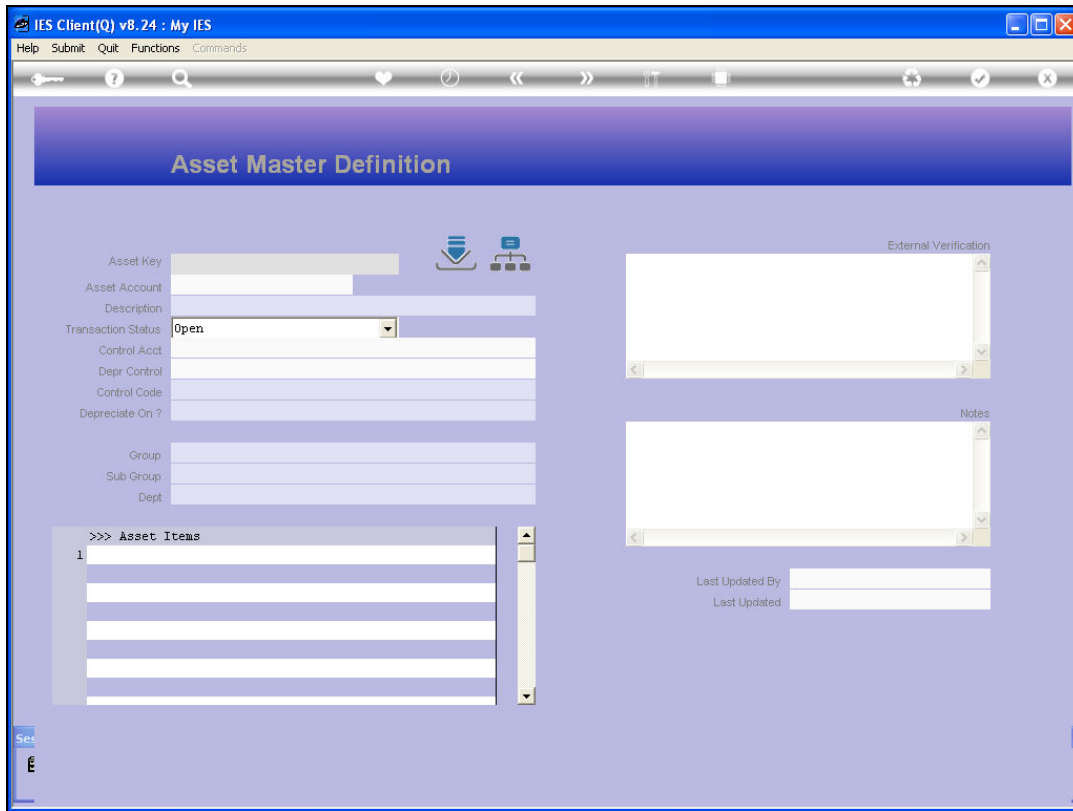


Slide 2

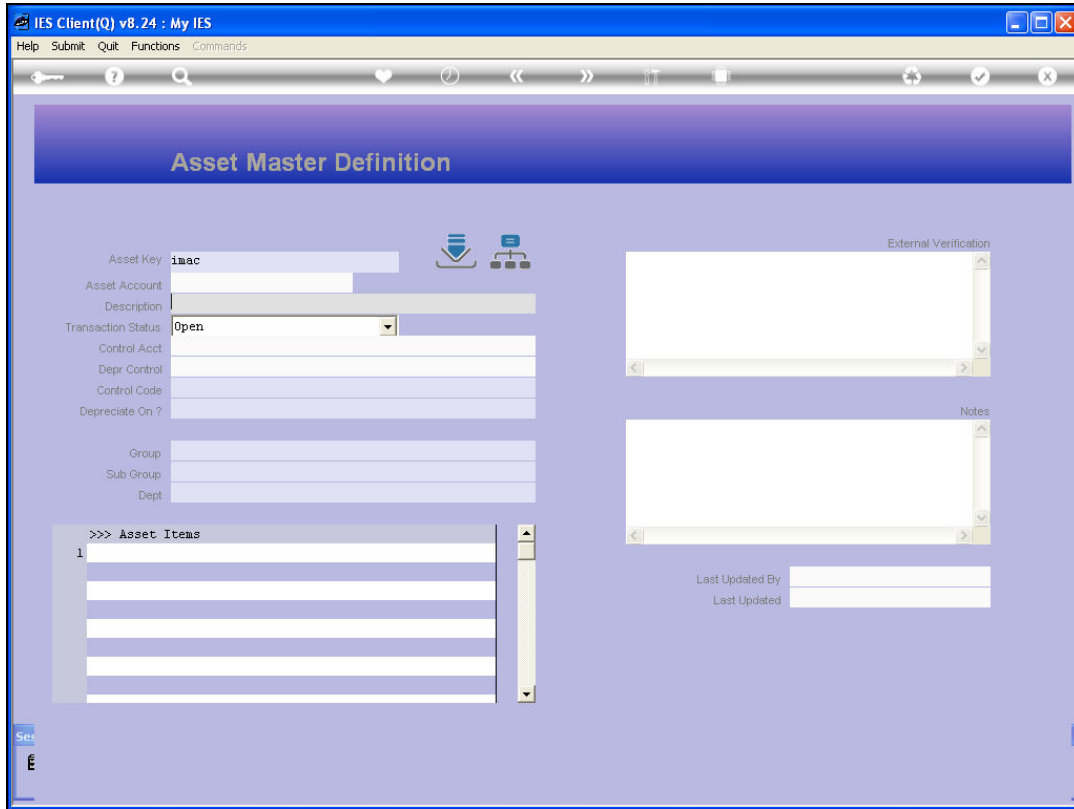
Slide notes:



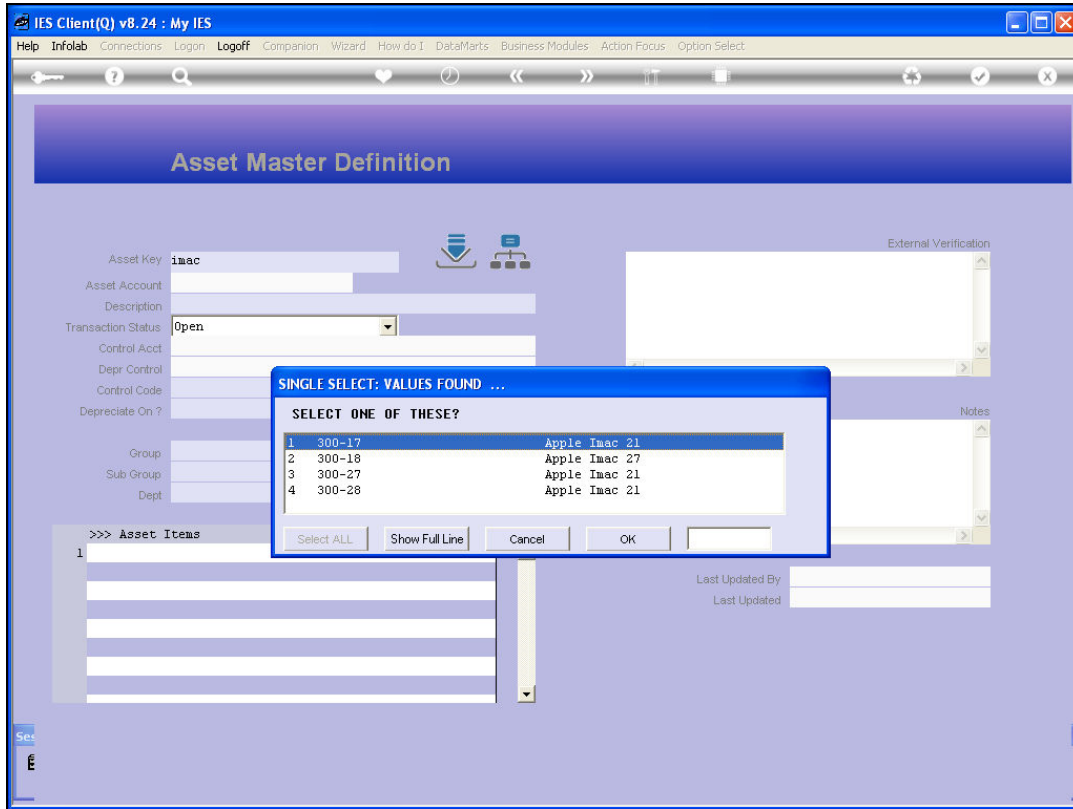
Slide 3
Slide notes:



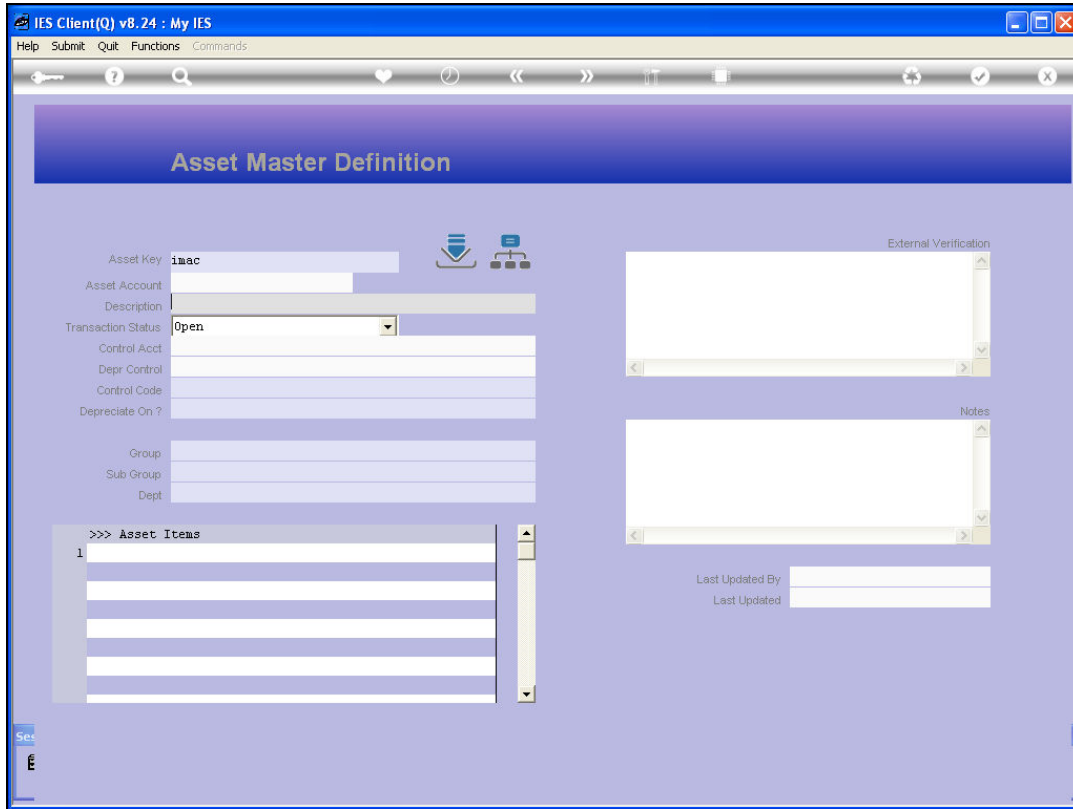
Slide 4
Slide notes:



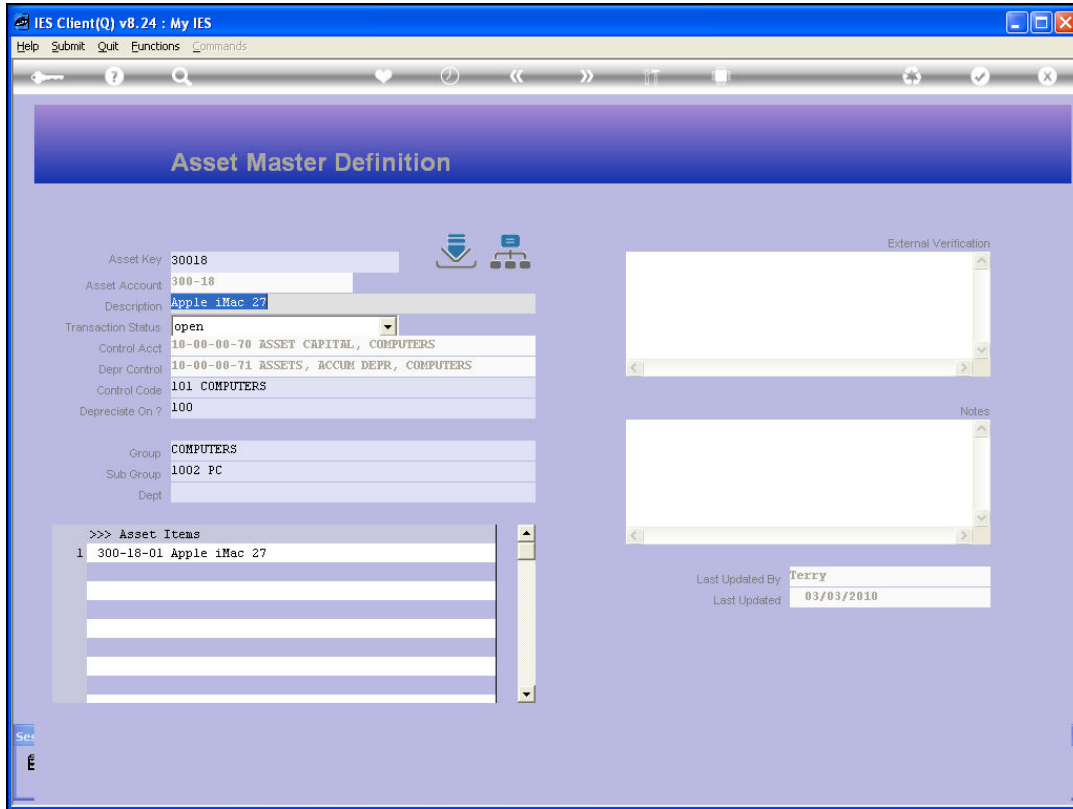
Slide 5
Slide notes:



Slide 6
Slide notes:

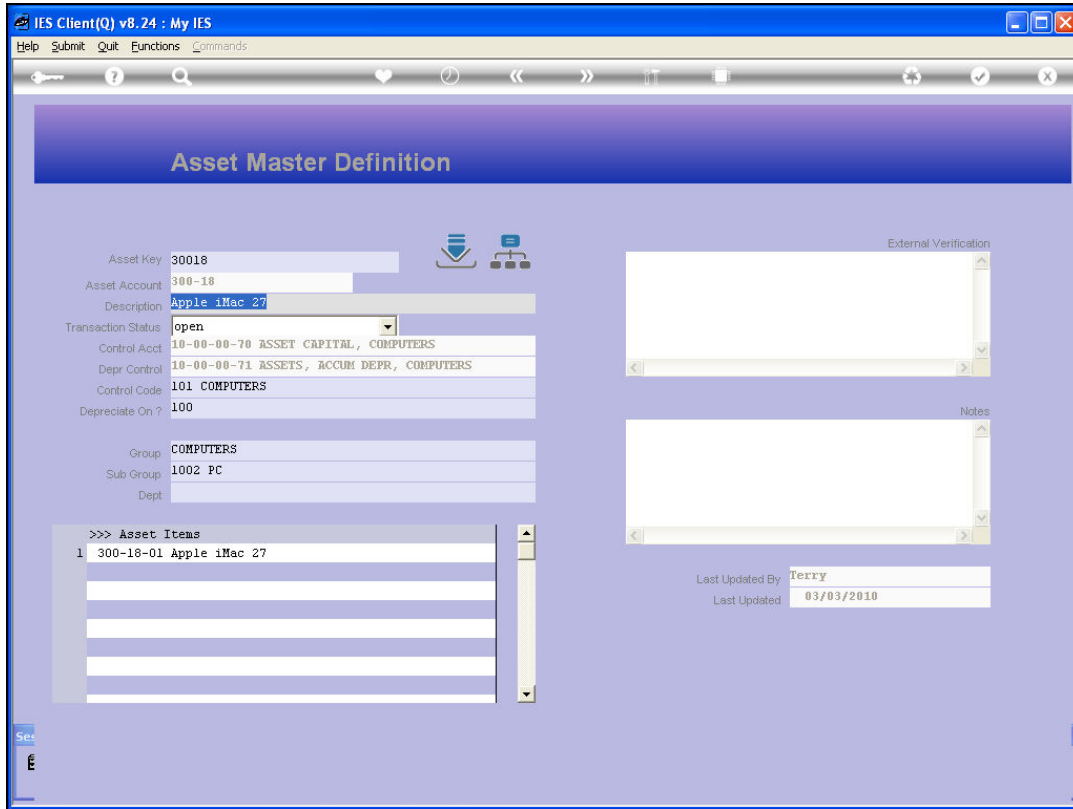


Slide 7
Slide notes:



Slide 8

Slide notes: The Asset Master Enquiry includes Transaction Drills, Audit Trails, Export to Spread Sheet, and View options at the Asset Master level.



Slide 9

Slide notes: And it also enables a drill through to any Asset Item listed on the Master.

The screenshot shows the 'Asset Item' form in the IES Client v8.24. The form is divided into several sections:

- Asset Item Key:** 30018-01
- Internal Ref:** [Blank]
- Asset Item Account:** 300-18-01
- Description:** Apple iMac 27
- Transaction Status:** open
- Quantity:** 1.00
- Main Asset Account:** 300-18 Apple iMac 27
- Meter Open Balance:** 0.00

Depreciation:

: Primary	104 33.3% per annum
: Tax	104 33.3% per annum
: Forex	104 33.3% per annum

MEMO: -

Original Capital Value: 0.00
Currency: [Blank]

Notes: [Text Area]

Asset Item Values:

Residual %:

: Primary	0.00
: Tax	0.00
: Forex	0.00

Residual Amount:

: Primary	1.00
: Tax	1.00
: Forex	1.00

Depreciation Start Period:

: Primary	Dec 2009 (p 107)
: Tax	Dec 2009 (p 107)
: Forex	Dec 2009 (p 107)

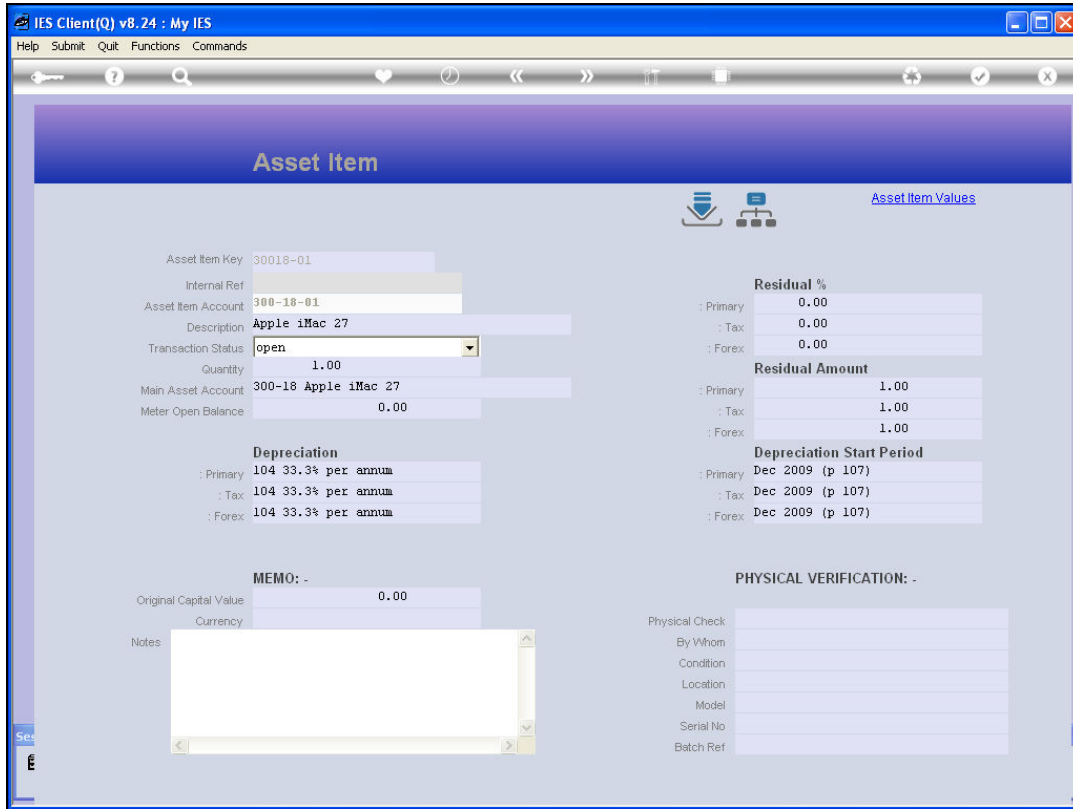
PHYSICAL VERIFICATION: -

Physical Check:

By Whom	[Blank]
Condition	[Blank]
Location	[Blank]
Model	[Blank]
Serial No	[Blank]
Batch Ref	[Blank]

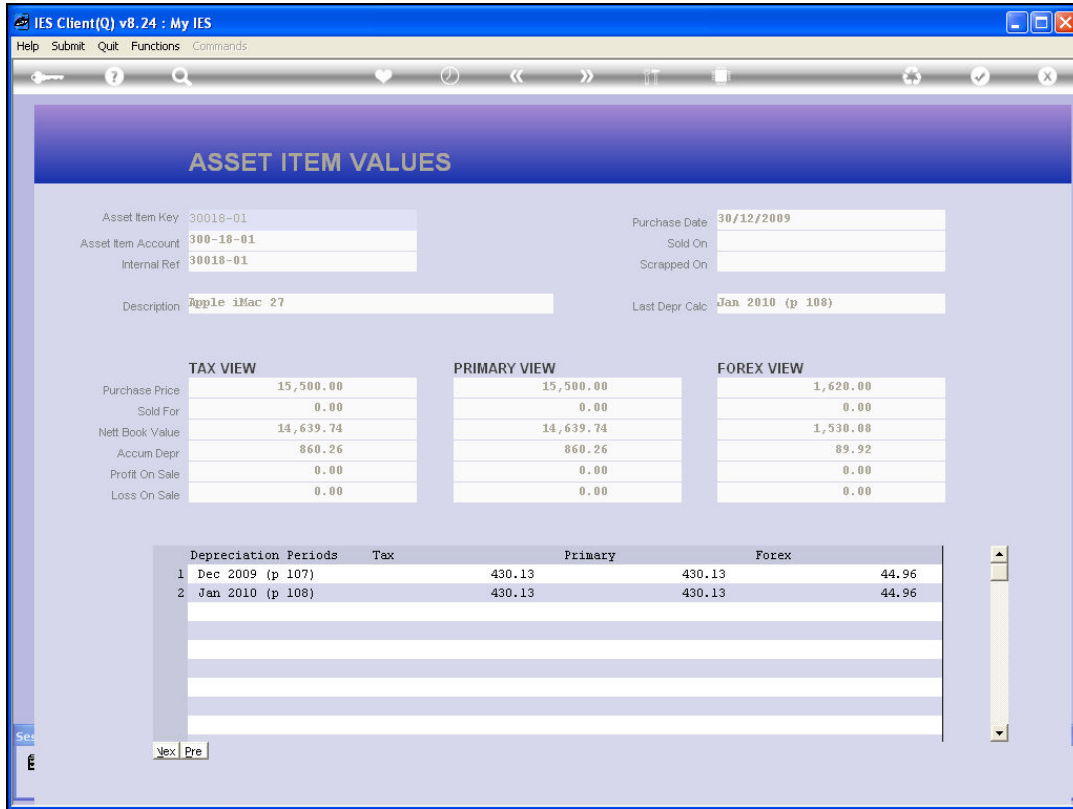
Slide 10

Slide notes:



Slide 11

Slide notes: The Asset Item Enquiry, once entered into, provides further Transaction Drills and Views of the Asset Item Account, and provides also a drill through to the Asset Item Values perspective.



Slide 12

Slide notes: At the Asset Item Values screen, we get a clear perspective on the Asset Item, and it's current Depreciation status.

ASSET ITEM VALUES

Asset Item Key: 30018-01
Asset Item Account: 300-18-01
Internal Ref: 30018-01
Description: Apple iMac 27

Purchase Date: 30/12/2009
Sold On:
Scrapped On:
Last Depr Calc: Jan 2010 (p 108)

	TAX VIEW	PRIMARY VIEW	FOREX VIEW
Purchase Price	15,500.00	15,500.00	1,620.00
Sold For	0.00	0.00	0.00
Nett Book Value	14,639.74	14,639.74	1,530.08
Accum Depr	860.26	860.26	89.92
Profit On Sale	0.00	0.00	0.00
Loss On Sale	0.00	0.00	0.00

Depreciation Periods	Tax	Primary	Forex
1 Dec 2009 (p 107)	430.13	430.13	44.96
2 Jan 2010 (p 108)	430.13	430.13	44.96

Next Pre

Slide 13

Slide notes:

ASSET ITEM VALUES

Asset Item Key: 30018-01
Asset Item Account: 300-18-01
Internal Ref: 30018-01
Description: Apple iMac 27

Purchase Date: 30/12/2009
Sold On:
Scrapped On:
Last Depr Calc: Jan 2010 (p 108)

TAX VIEW		PRIMARY VIEW		FOREX VIEW	
Purchase Price	15,500.00	15,500.00		1,620.00	
Sold For	0.00			0.00	
Nett Book Value	14,639.74			1,530.08	
Accum Depr	860.26			89.92	
Profit On Sale	0.00			0.00	
Loss On Sale	0.00			0.00	

Depreciation Periods	Tax	Primary	Forex
1 Dec 2009 (p 107)	430.13	430.13	44.96
2 Jan 2010 (p 108)	430.13	430.13	44.96

Dialog Box: IES Client - You pressed ESCAPE. Please confirm Screen Exit? [OK] [Cancel]

Slide 14

Slide notes:

The screenshot shows the 'Asset Item' form in the IES Client v8.24. The form is divided into several sections:

- Asset Item Key:** 30018-01
- Internal Ref:** [Blank]
- Asset Item Account:** 300-18-01
- Description:** Apple iMac 27
- Transaction Status:** open
- Quantity:** 1.00
- Main Asset Account:** 300-18 Apple iMac 27
- Meter Open Balance:** 0.00

Depreciation:

: Primary	104 33.3% per annum
: Tax	104 33.3% per annum
: Forex	104 33.3% per annum

MEMO: -

Original Capital Value: 0.00

Currency: [Blank]

Notes: [Text area]

Asset Item Values:

Residual %:

: Primary	0.00
: Tax	0.00
: Forex	0.00

Residual Amount:

: Primary	1.00
: Tax	1.00
: Forex	1.00

Depreciation Start Period:

: Primary	Dec 2009 (p 107)
: Tax	Dec 2009 (p 107)
: Forex	Dec 2009 (p 107)

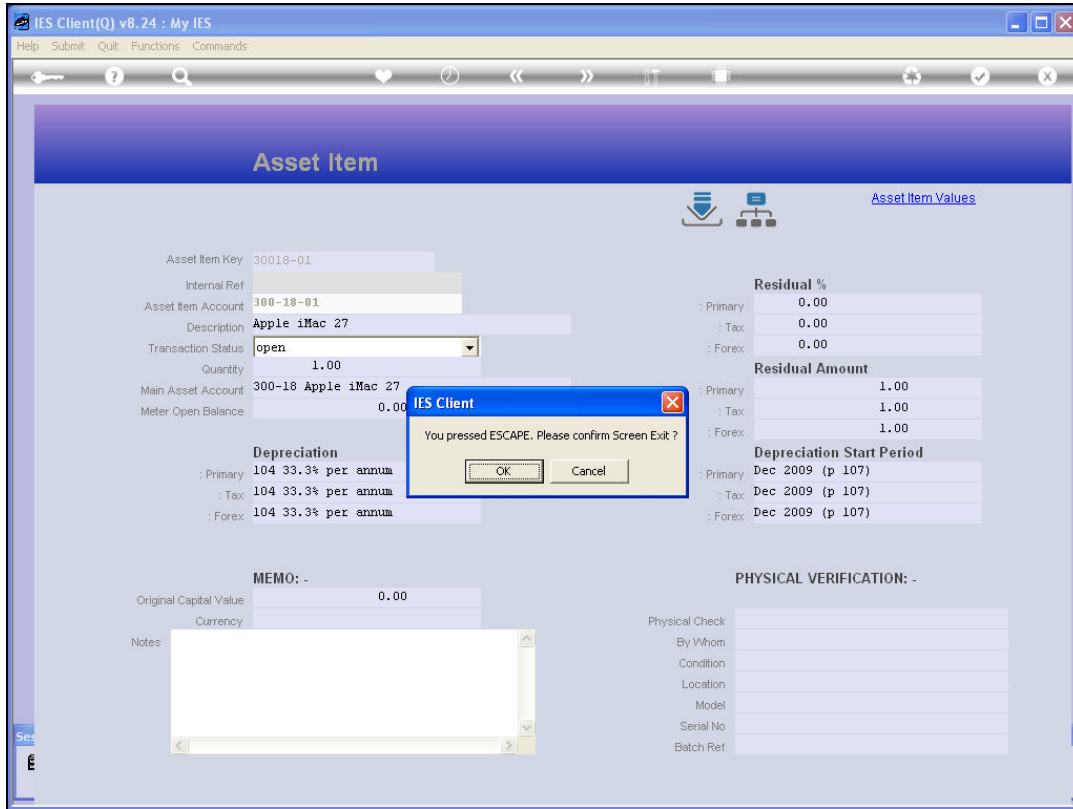
PHYSICAL VERIFICATION: -

Physical Check:

By Whom	[Blank]
Condition	[Blank]
Location	[Blank]
Model	[Blank]
Serial No	[Blank]
Batch Ref	[Blank]

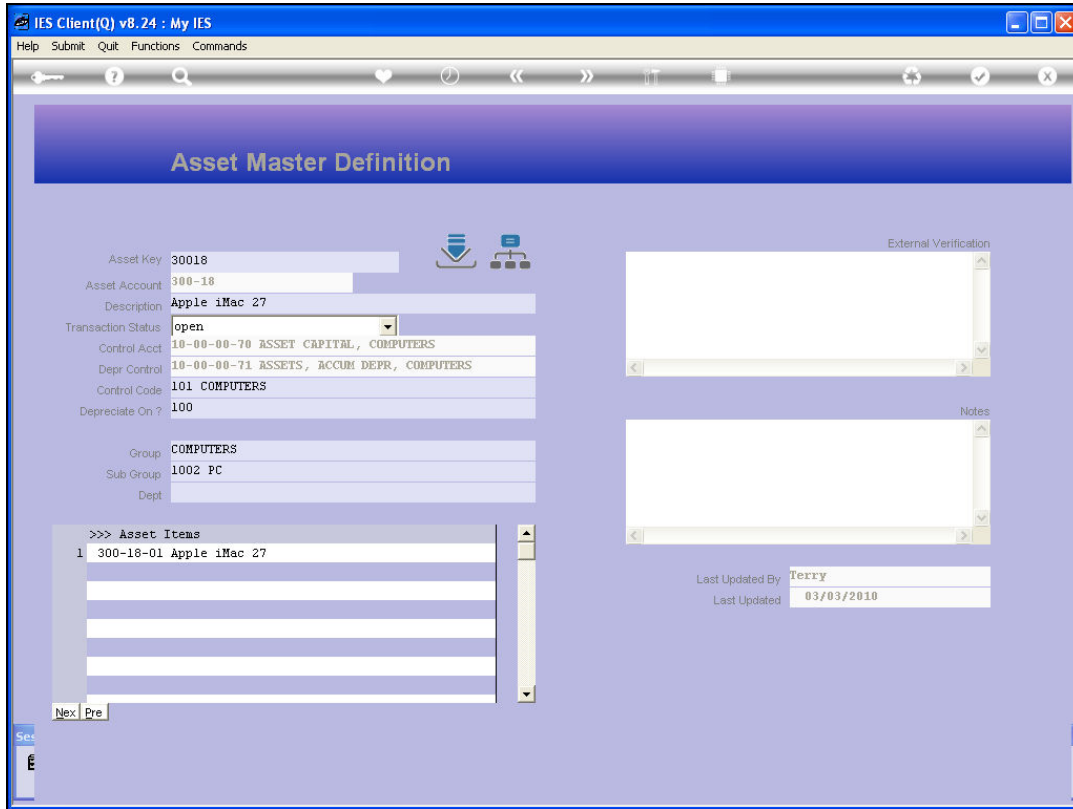
Slide 15

Slide notes:



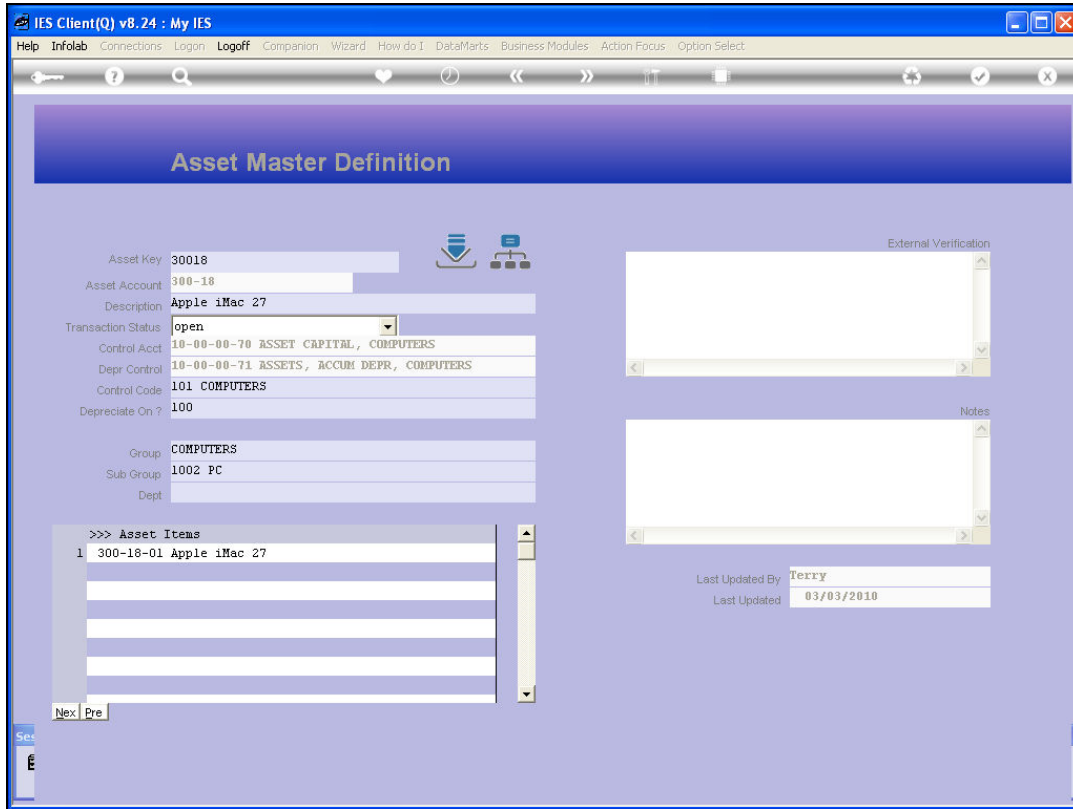
Slide 16

Slide notes:



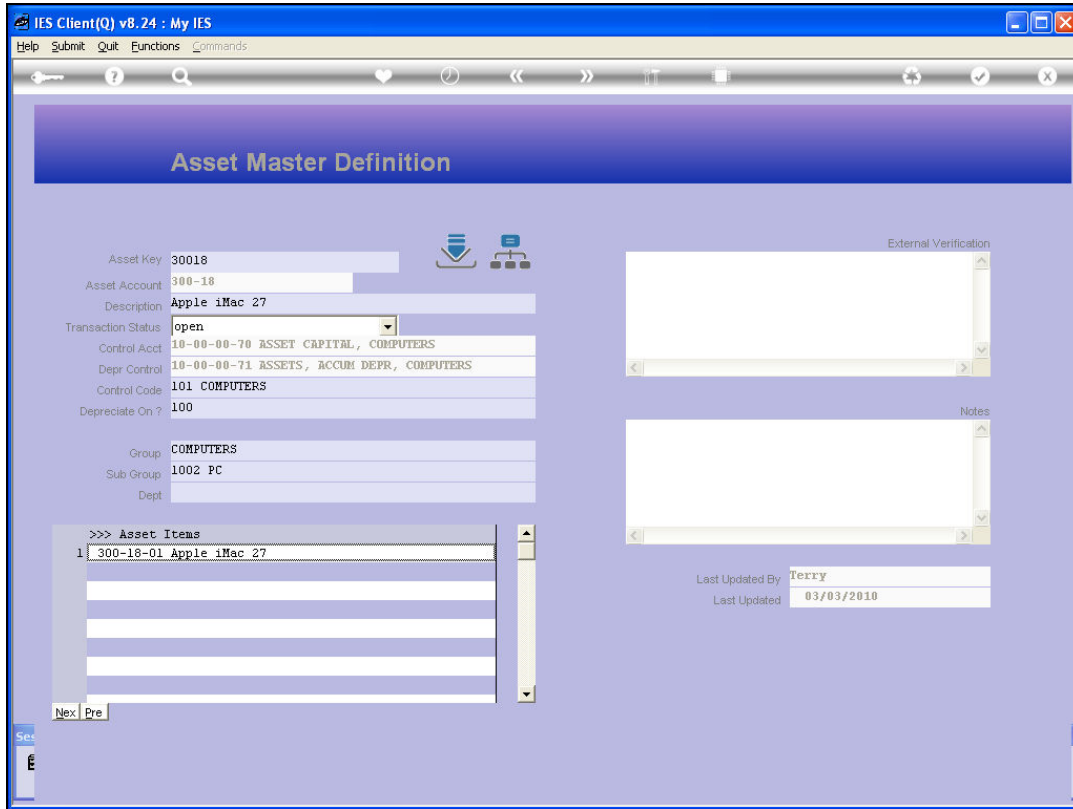
Slide 17

Slide notes:



Slide 18

Slide notes:



Slide 19

Slide notes: The functions available here are also available on the Update function, but in the case of the Enquiry it is useful to the User who does not have access to the Update function.