

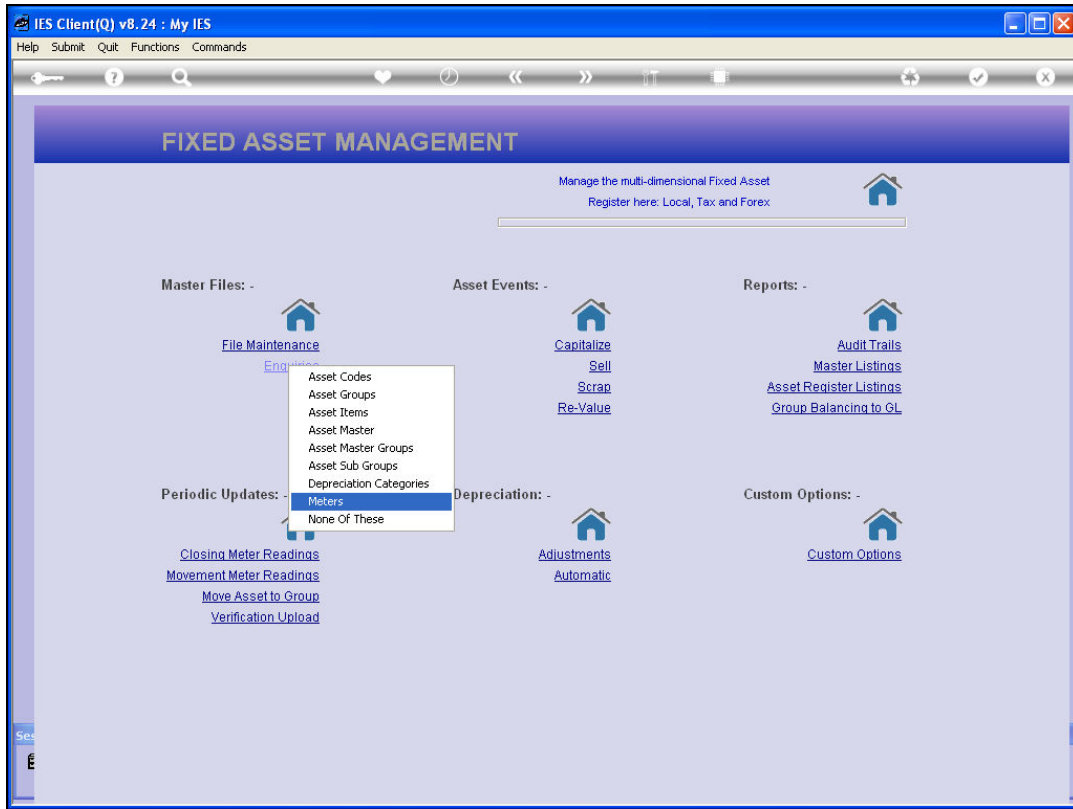


Slide 1

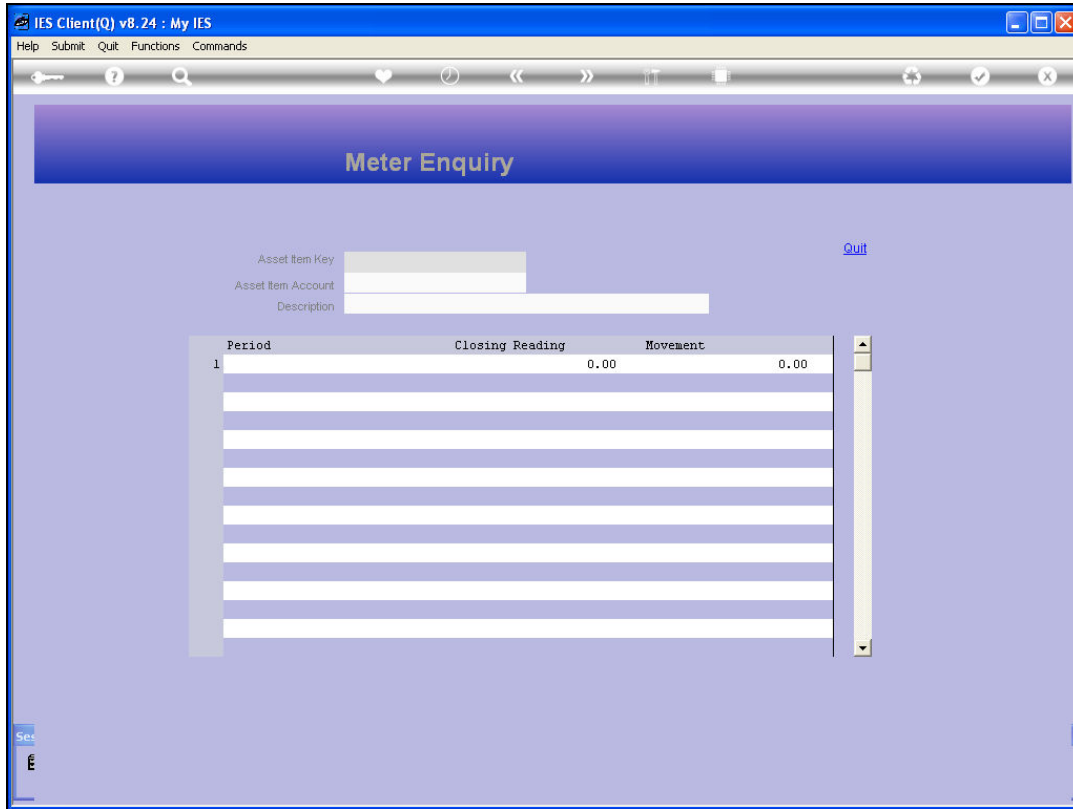
Slide notes: The Asset Item Meter Enquiry will reveal Meter detail for the Asset Item.



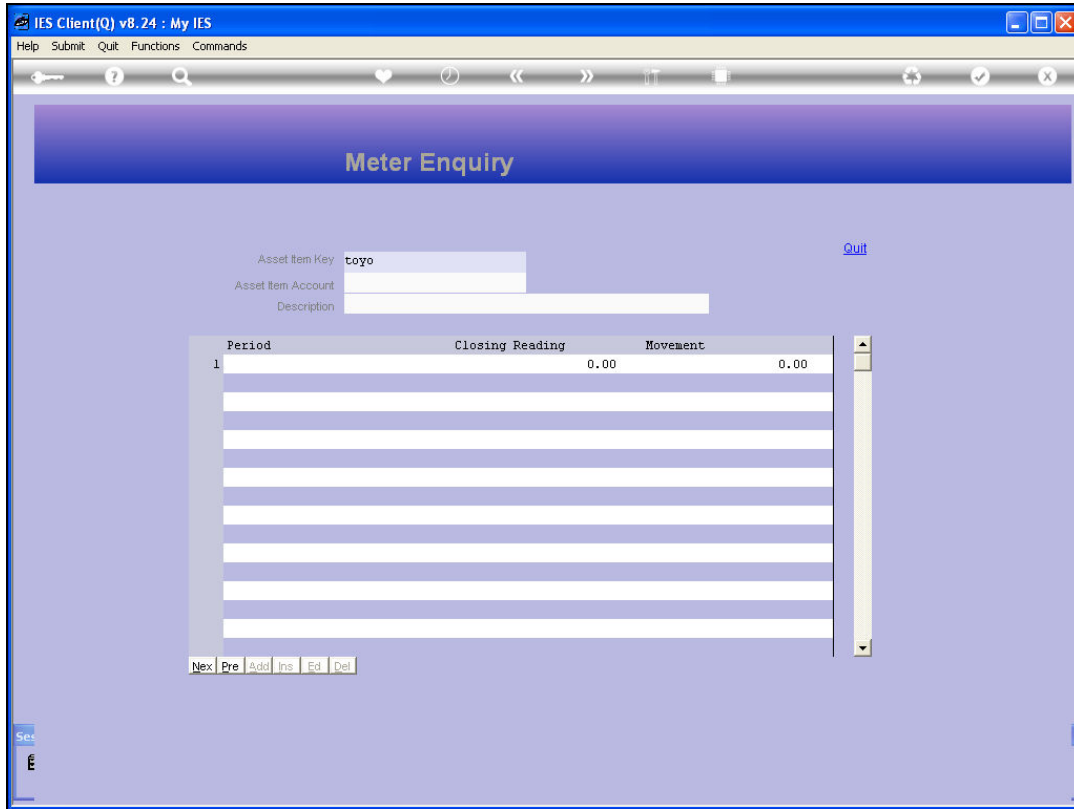
Slide 2
Slide notes:



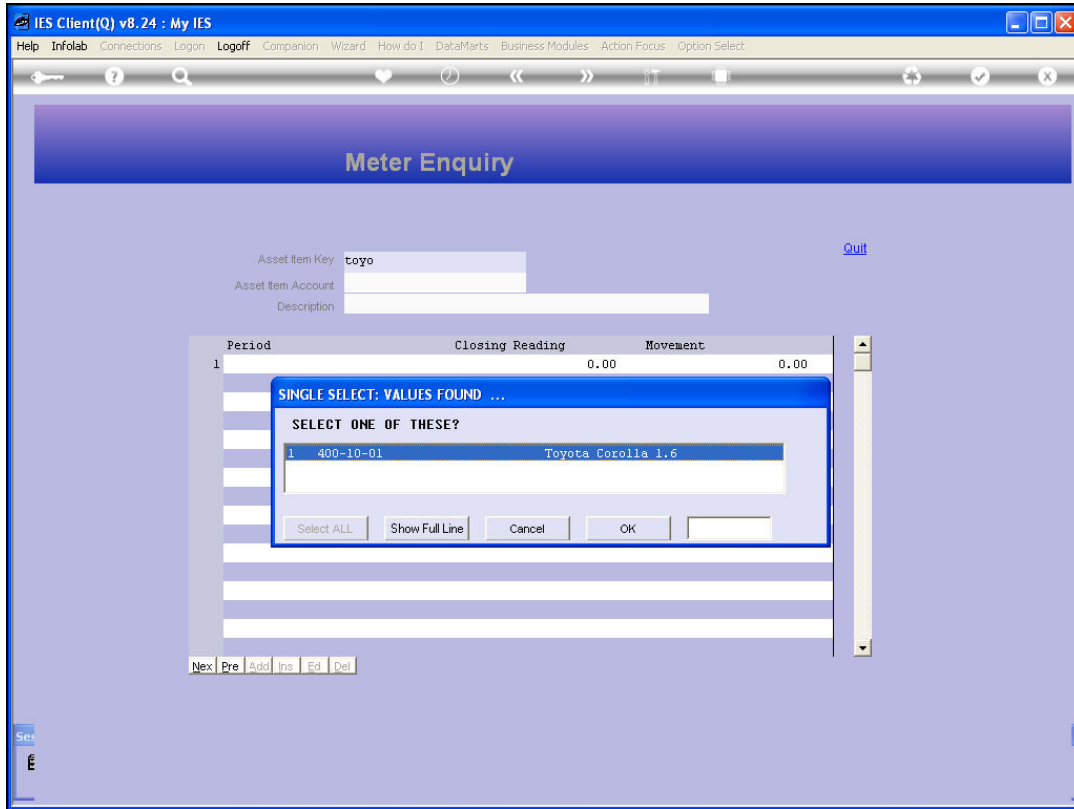
Slide 3
Slide notes:



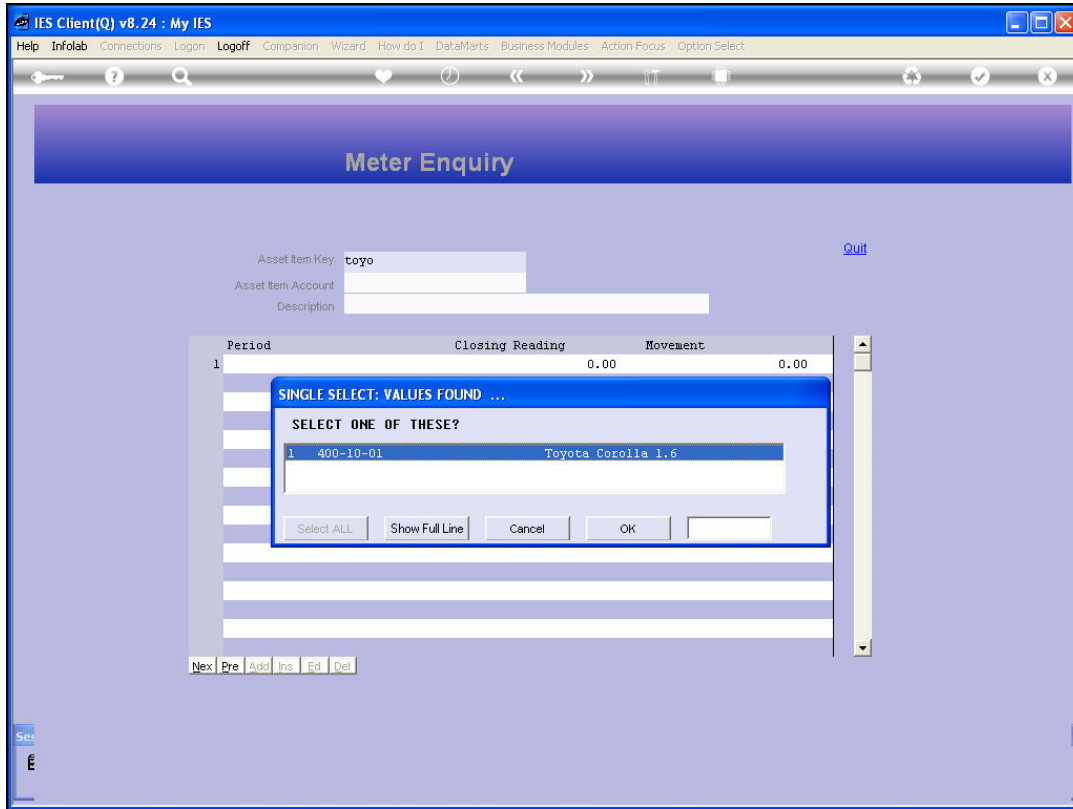
Slide 4
Slide notes:



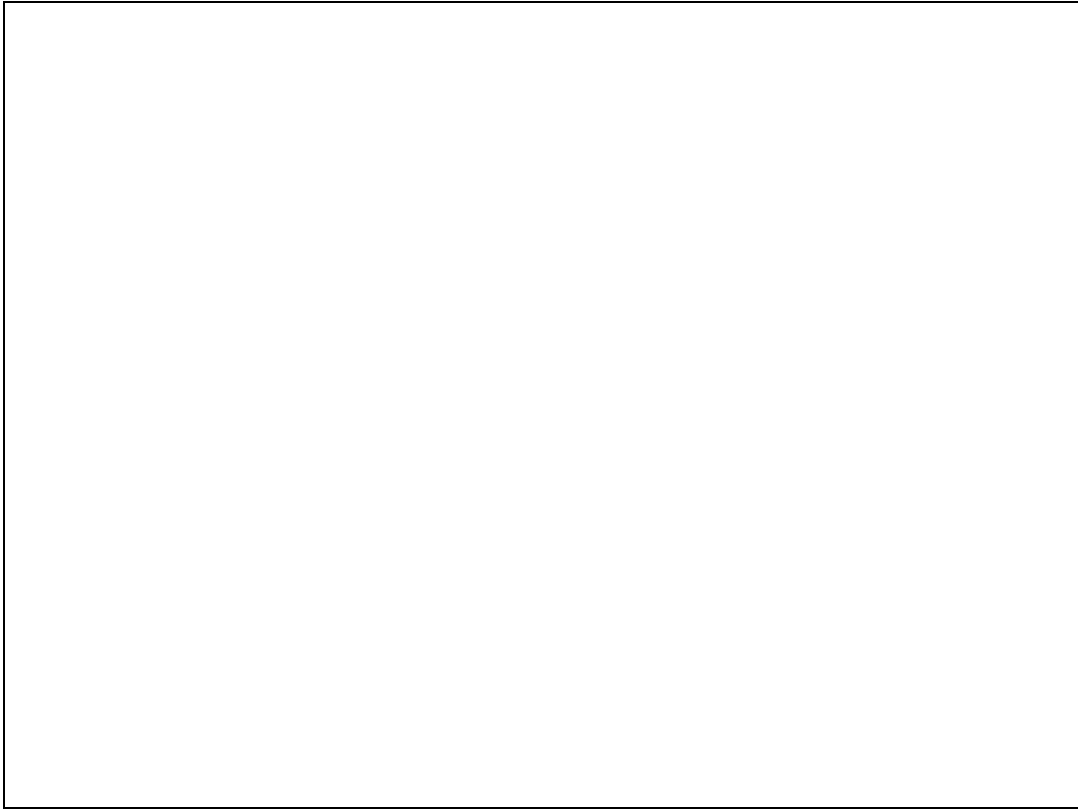
Slide 5
Slide notes:



Slide 6
Slide notes:

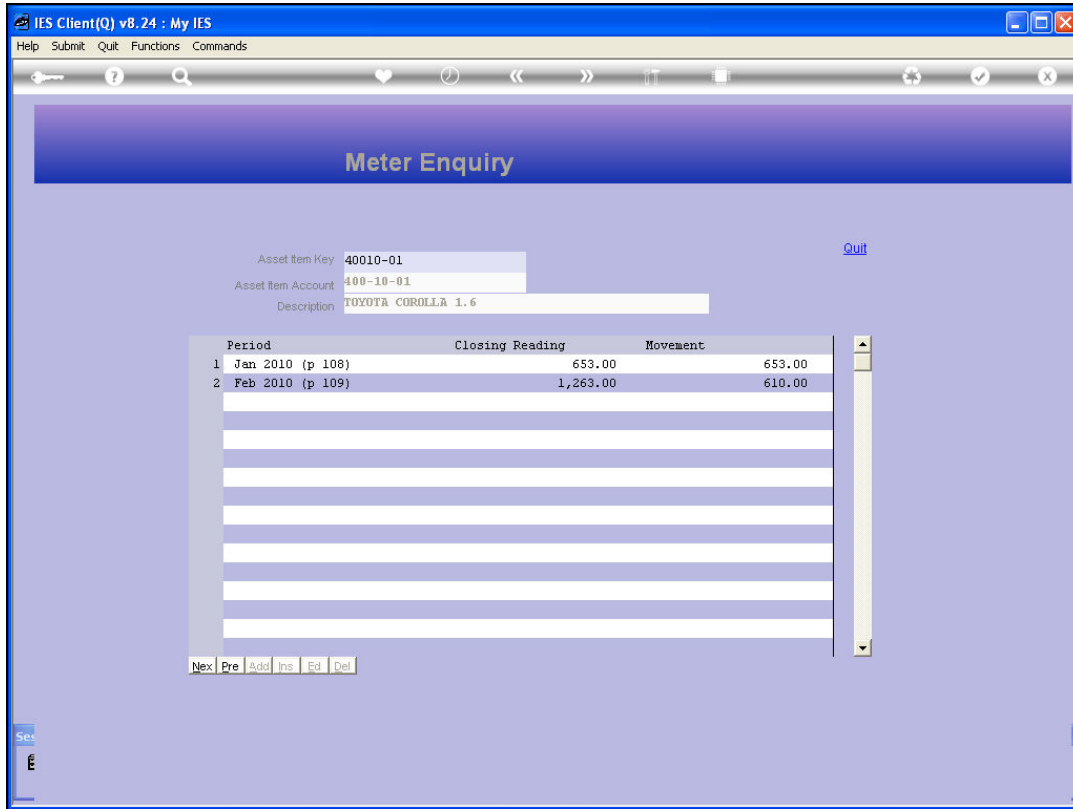


Slide 7
Slide notes:



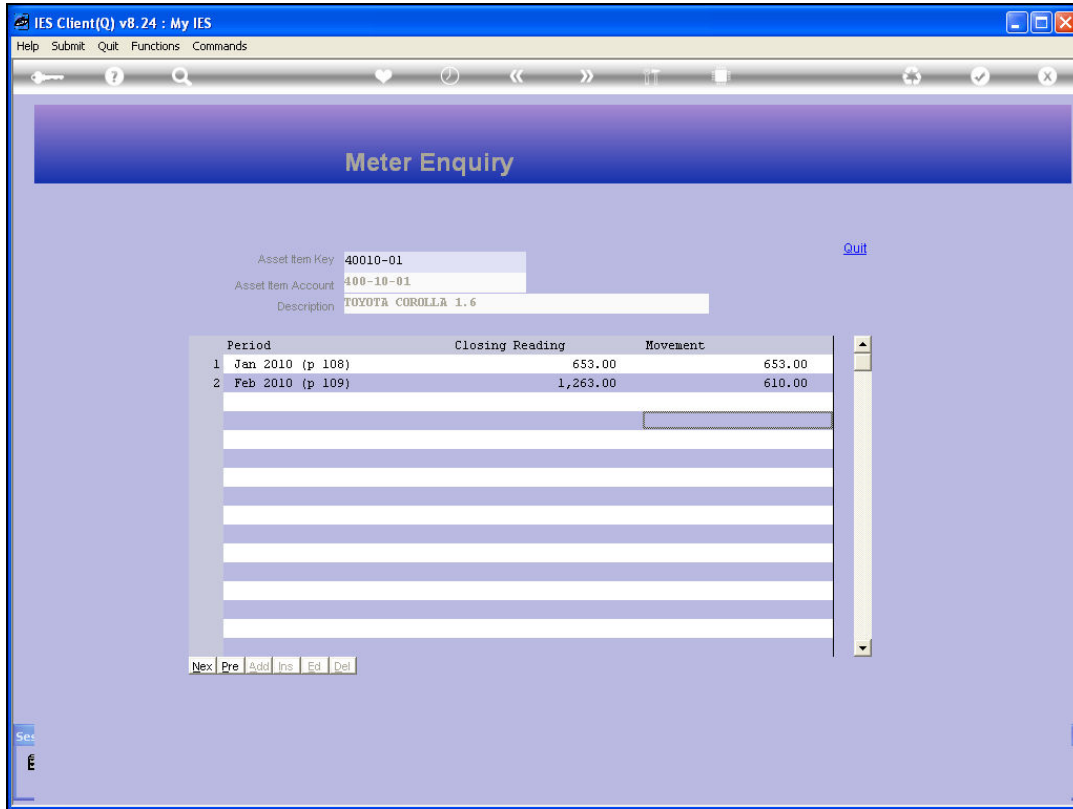
Slide 8

Slide notes:



Slide 9

Slide notes: All Meter History for the Asset Item that is present will be listed by Closing Meter Reading and Movement, irrespective of the method used to feed the Meter readings.



Slide 10
Slide notes: