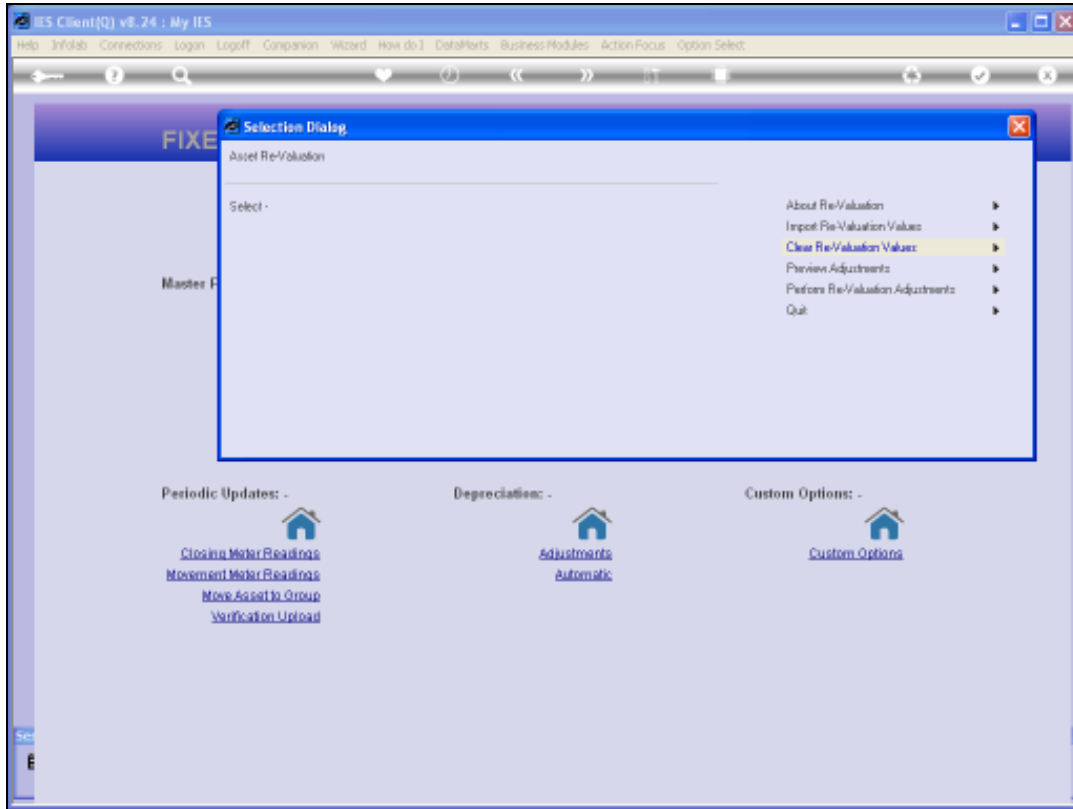
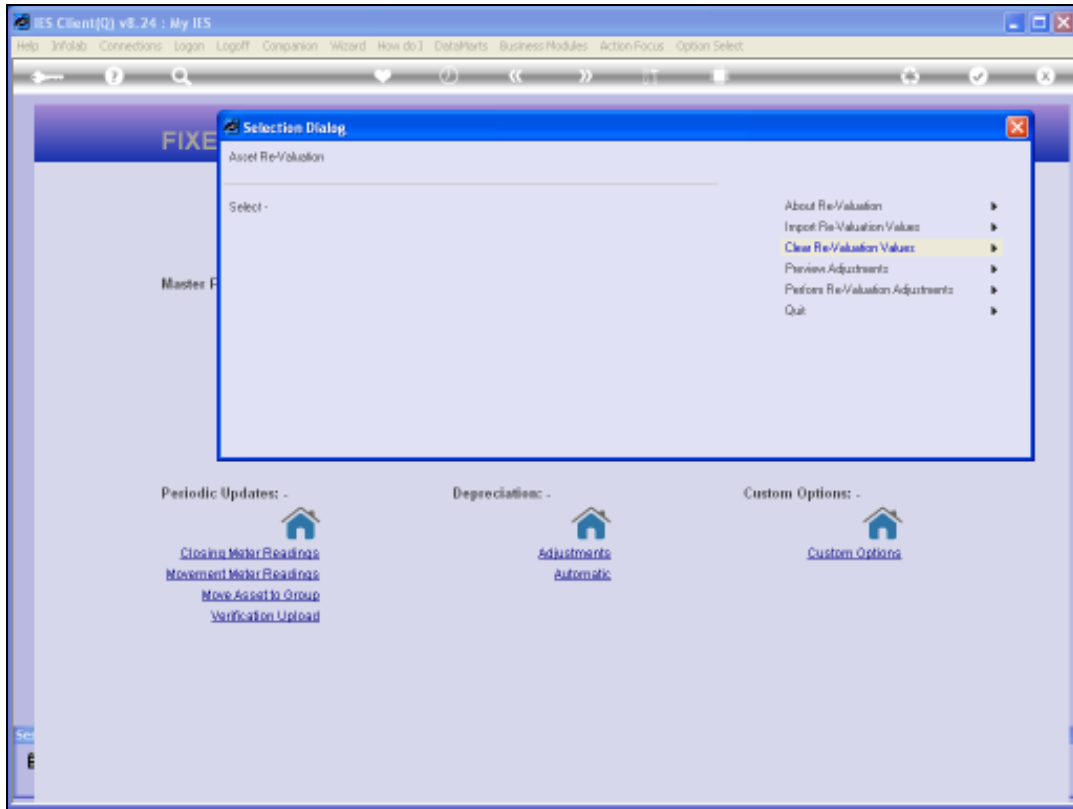


Slide 1

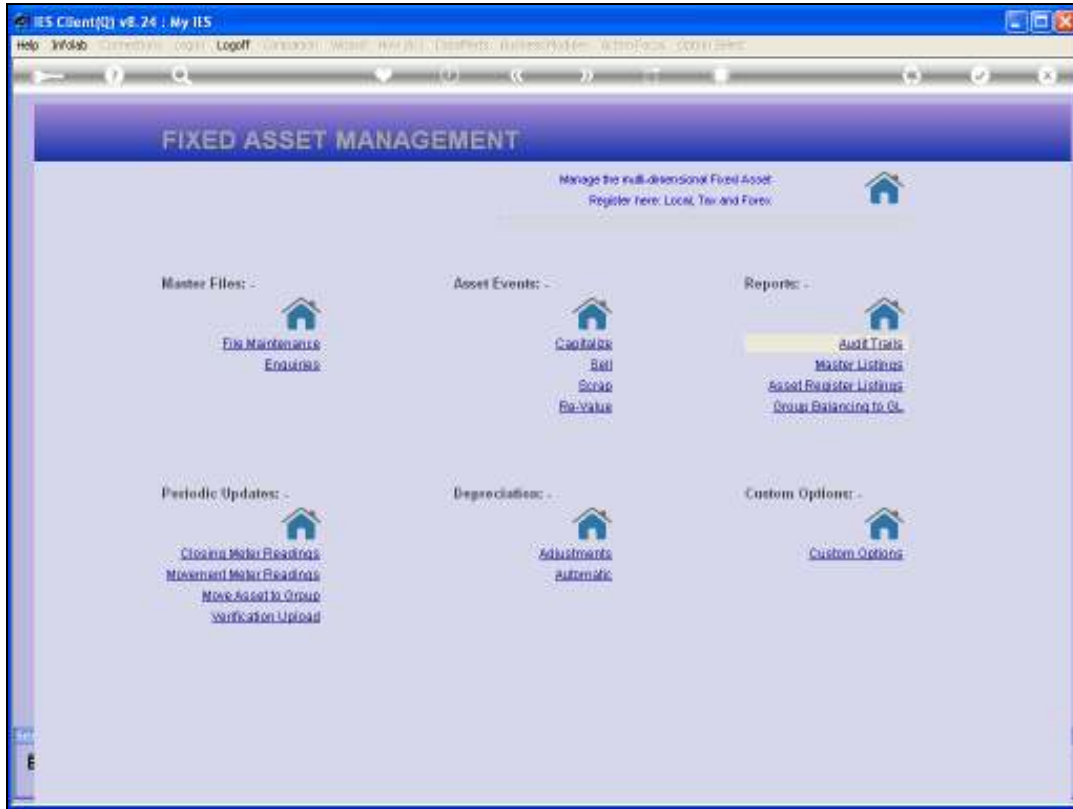
Slide notes: We are working with Asset Re-Valuation, and we are considering the option to "CLEAR" current Adjustments. This option is always performed when we do a new upload of Asset Values. So the only time that we will really need to use it is if we have uploaded new Values, but have decided that we will not proceed to perform the Adjustments at all. In any event, what this option does is to remove all uploaded Adjustments that have NOT yet been performed.



Slide 2
Slide notes:



Slide 3
Slide notes:



Slide 4
Slide notes: