



Slide 1

Slide notes: We will now have a look at the Audit Trail Report options for Assets. Individual Account Audit Trails are available from all the Transaction Drills on Asset Financial Accounts, and we can also mass produce Audit Trails for Ranges of Accounts, as we will see now.



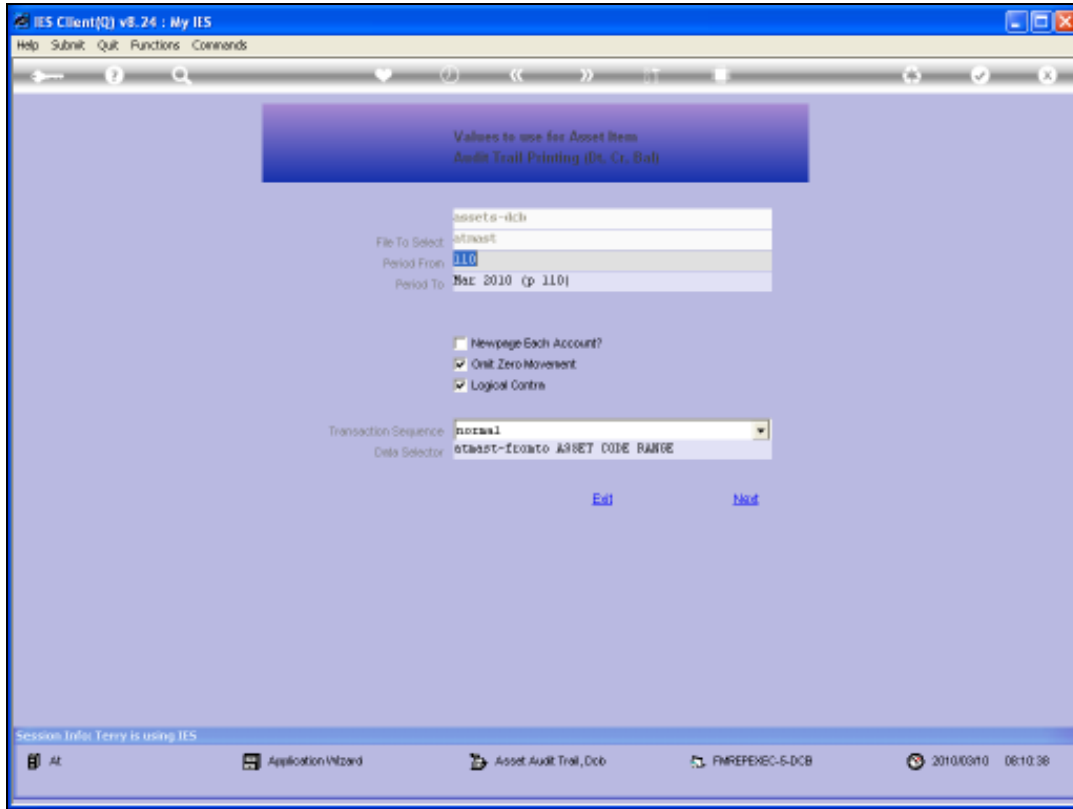
Slide 2

Slide notes: There are a variety of formats available. For Primary, we can choose between the Actual Only and the Debit and Credit type format. Then we also have a Tax and a Forex format, and a combination format that will list Primary, Tax and Forex all on the same Report.



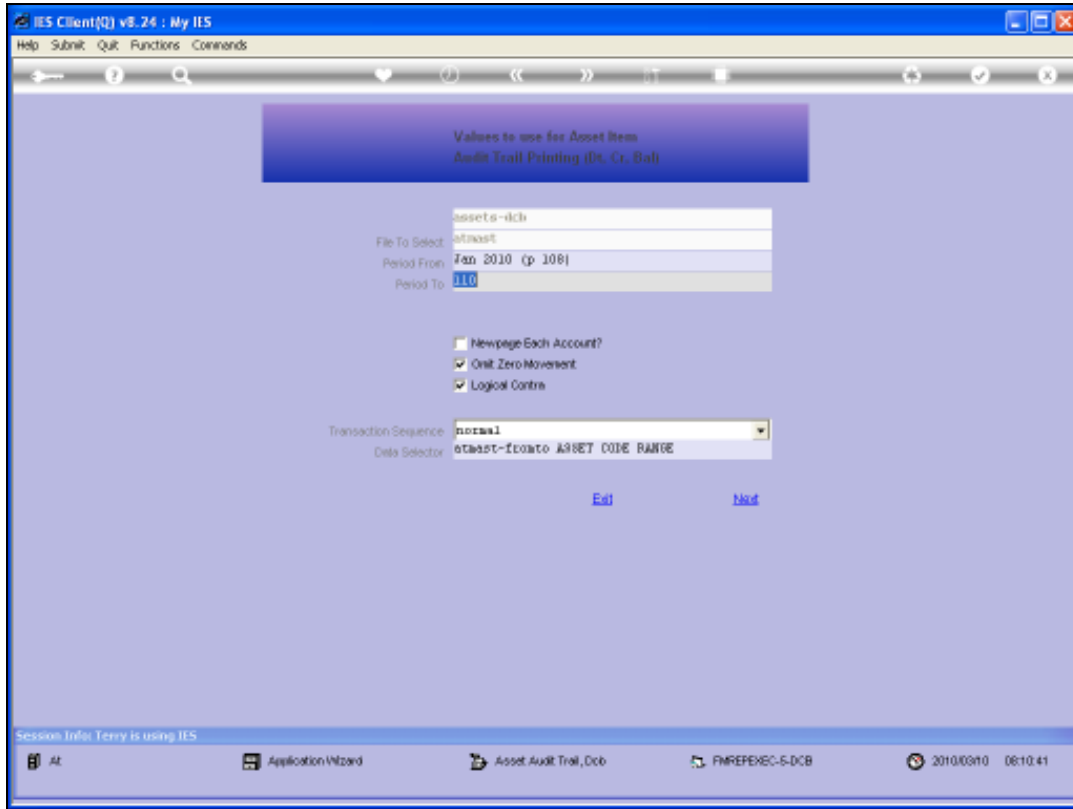
Slide 3

Slide notes: For this example, we will choose the Debit and Credit option on the Primary view.



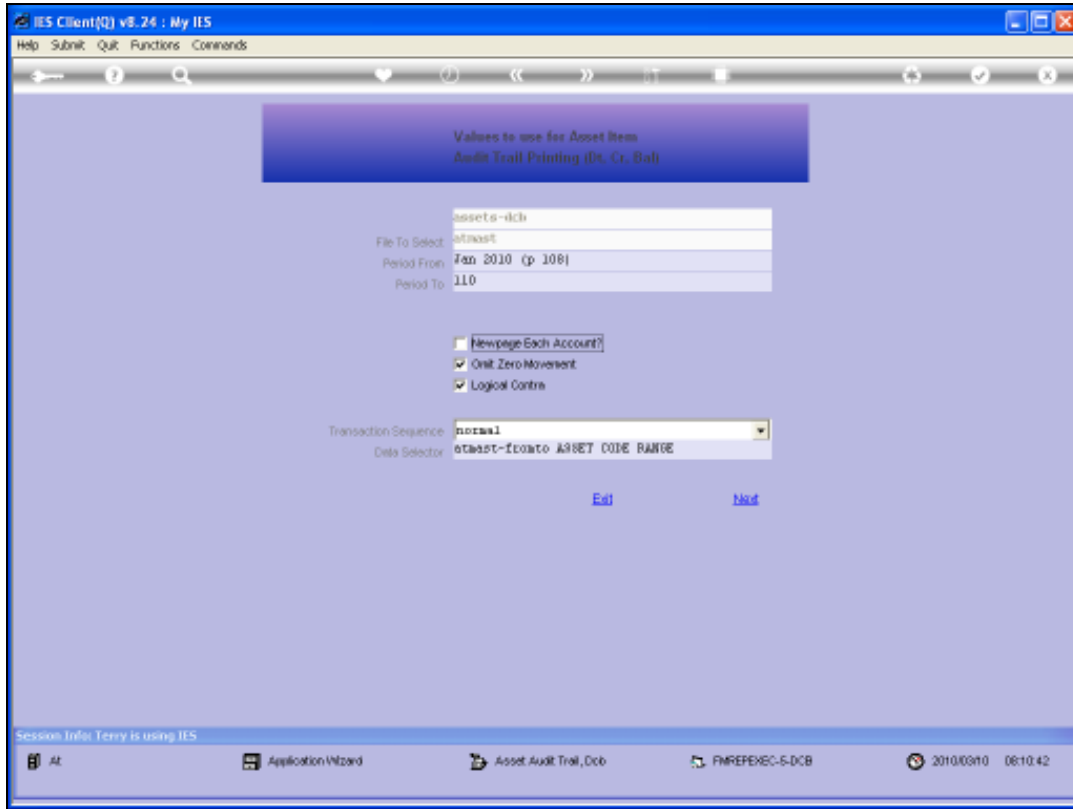
Slide 4

Slide notes: We can select a range of multiple Periods, although the default is to the Current Period only.



Slide 5

Slide notes: And we have the usual other settings for Audit Trails where we can omit Accounts with no Movement, plus some other settings.



Slide 6
Slide notes:



Slide 7
Slide notes:

IES Client(v8.24.1) My IES

Help Submit Quit Functions Commands

IES REPORTS AND QUERIES: - User Instructions

NAME:

1: - CHOOSE VERSION [Help](#)

Report Version:

2: - CHOOSE SETTINGS

Format:

Output:

File Type:

Template:

Report Header:

3: - CHOOSE DATA SELECTOR [Group/Source](#)

Fixed choice:

4: - TO e-MAIL THE RESULTS [Priority](#) [Add/Remove](#)

Dispatch By E-Mail

Mail To:

Mail Title:

Message Body:

5: - ADAPT DATA SELECTION (if groups are present) [How to adapt MY CHOICE](#)

Selection Tip	By Choice
1 Asset > >	0
2 Asset < <	21

[New](#) [Del](#) [Add](#) [Print](#) [Go](#) [Find](#)

6: - Record Select

OPEN Records Only

CLOSED Records Only

EITHER

7: - CHOOSE NEXT [Next](#)

Slide 8

Slide notes: Now we can still fine-tune the range of Accounts to include, if we wish to do so.


```

T1541029259.TXT - Notepad
File Edit Format View Help

                               Infobahn (Pty) Ltd
                               *****
                               0 : Head Office
                               -----
                               Account Number : 20017-01 - AIR CONDITIONER, 10
                               *****

                               A S S E T   T R A N S A C T I O N   L I S T I N G   A T   Jan 2010 to Mar 2010 as printed on 10/02/2010
                               -----

Date      Transaction Detail          Other Side Of Entry      Doc #          Debit          Credit          |
-----
Balance B/F
21/01/10  109/20017-01/period Deprecia L: 10901002          *auto          0.00          66.60          | 1
***** Closing Balance For Jan 2010
29/02/10  109/20017-01/period Deprecia L: 10901002          *auto          0.00          66.60          | 1
***** Closing Balance For Feb 2010
09/02/10  Scrap Asset Item          L: 10000000          20017-01          0.00          266.40          | 1
09/02/10  Scrap Asset Item          L: 10000000          20017-01          266.40          0.00          | 1
09/02/10  Scrap Asset Item          L: 10901000          20017-01          0.00          2,132.60          | 1
09/02/10  Reverse Scrapping Of Asset I L: 10000000          20017-01          266.40          0.00          | 1
09/02/10  Reverse Scrapping Of Asset I L: 10000000          20017-01          0.00          266.40          | 1

                               Infobahn (Pty) Ltd
                               *****
                               0 : Head Office
                               -----
                               Account Number : 20017-01 - AIR CONDITIONER, 10
                               *****

                               A S S E T   T R A N S A C T I O N   L I S T I N G   A T   Jan 2010 to Mar 2010 as printed on 10/02/2010
                               -----

Date      Transaction Detail          Other Side Of Entry      Doc #          Debit          Credit          |
-----
09/02/10  Reverse Scrapping Of Asset I L: 10901000          20017-01          2,132.60          0.00          | 1
***** Closing Balance For Mar 2010

```

Slide 9

Slide notes: And here we have a sample print, with more detail to the right.

Infolab (Pty) Ltd 0 : Head Office Account Number : 20017-01 - AID. GONDWIZWENI, GG							
DEBIT TRANSACTION LISTING A Y Jan 2010 to Mar 2010 as printed on 10/03/2010 Page 00008							
Other Side Of Entry	Doc #	Debit	Credit	Balance	Subch #	Ways	Subt
acc 1: 10001002	*memo	0.00	266.40	2,266.00			
For Jan 2010				2,200.20			1040962053F to
acc 1: 10001002	*memo	0.00	266.40	2,133.80			
For Feb 2010				2,133.80			1040962053F to
1: 10000000	20017-01	0.00	266.40	1,867.20			1040971621 to
1: 10000000	20017-01	266.40	0.00	2,133.80			1040971621A to
1: 10001000	20017-01	0.00	2,133.80	0.00			1040971621B to
SI 1: 10000000	20017-01	266.40	0.00	266.40			1040971620 to
SI 1: 10000000	20017-01	0.00	266.40	0.00			1040971620A to
Infolab (Pty) Ltd 0 : Head Office Account Number : 20017-01 - AID. GONDWIZWENI, GG							
DEBIT TRANSACTION LISTING A Y Jan 2010 to Mar 2010 as printed on 10/03/2010 Page 00009							
Other Side Of Entry	Doc #	Debit	Credit	Balance	Subch #	Ways	Subt
SI 1: 10001000	20017-01	2,133.80	0.00	2,133.80			1040971620B to
For Mar 2010				2,133.80			
				2,133.80			

Slide 10
 Slide notes: