

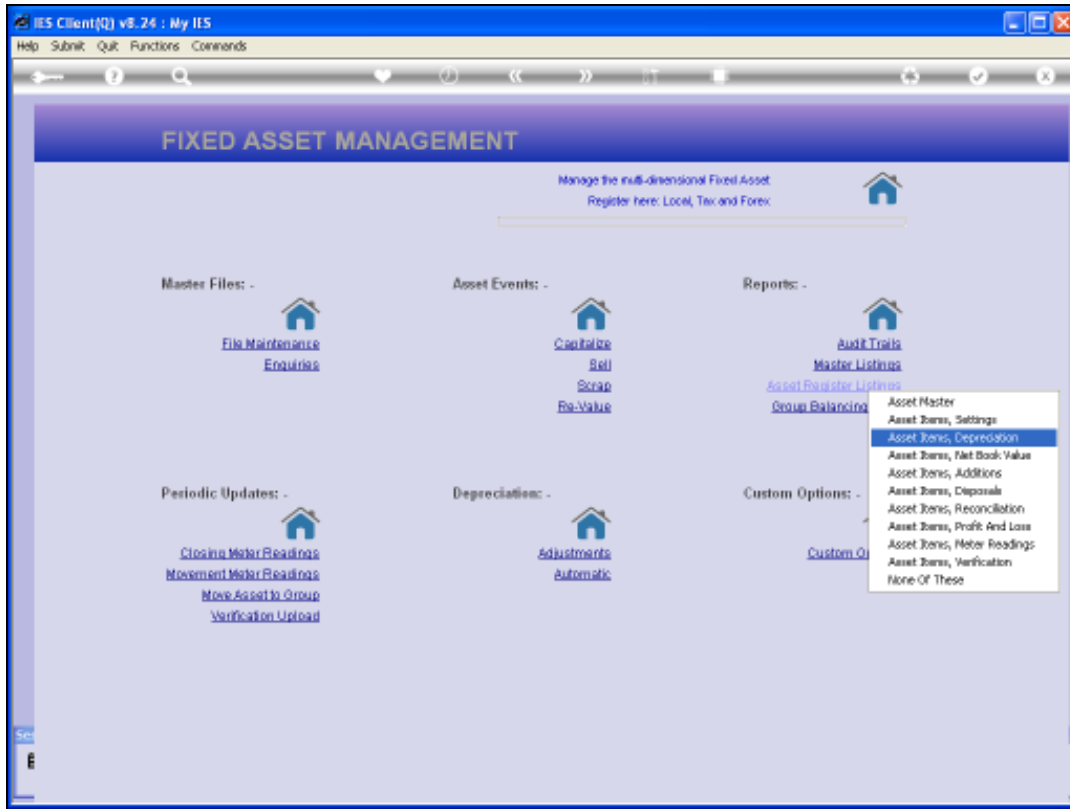


Slide 1

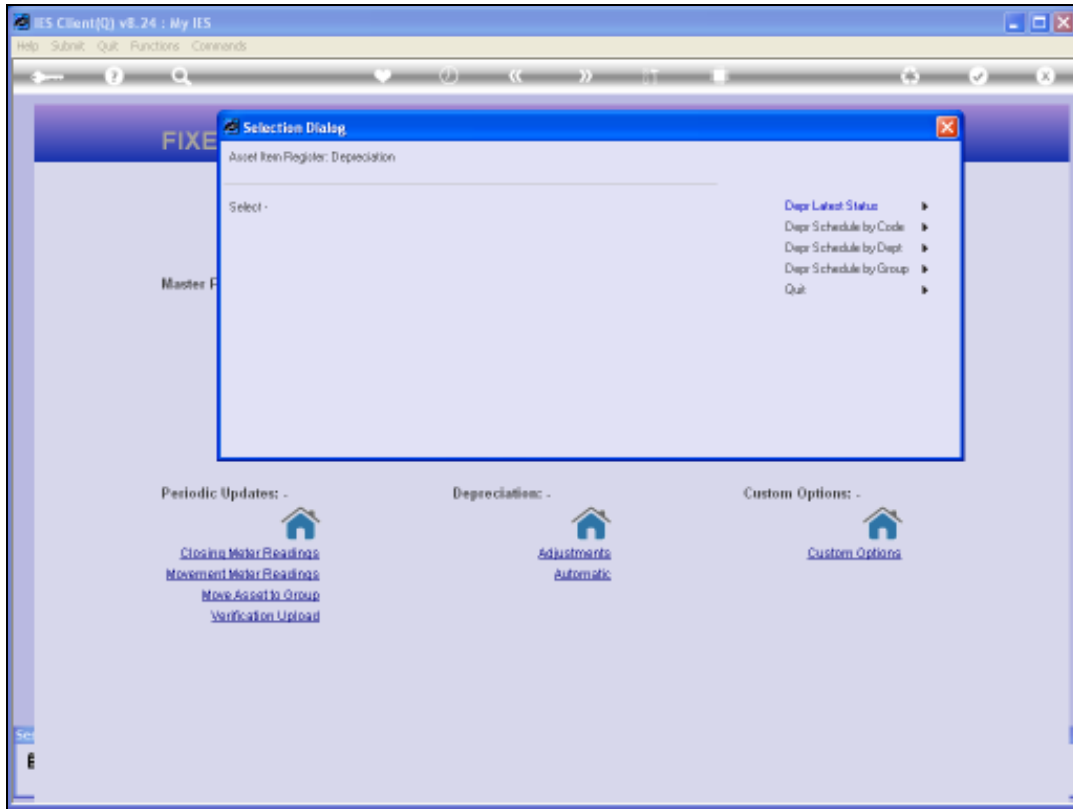
Slide notes: We have a number of options for Depreciation Schedules and Listings.



Slide 2
Slide notes:

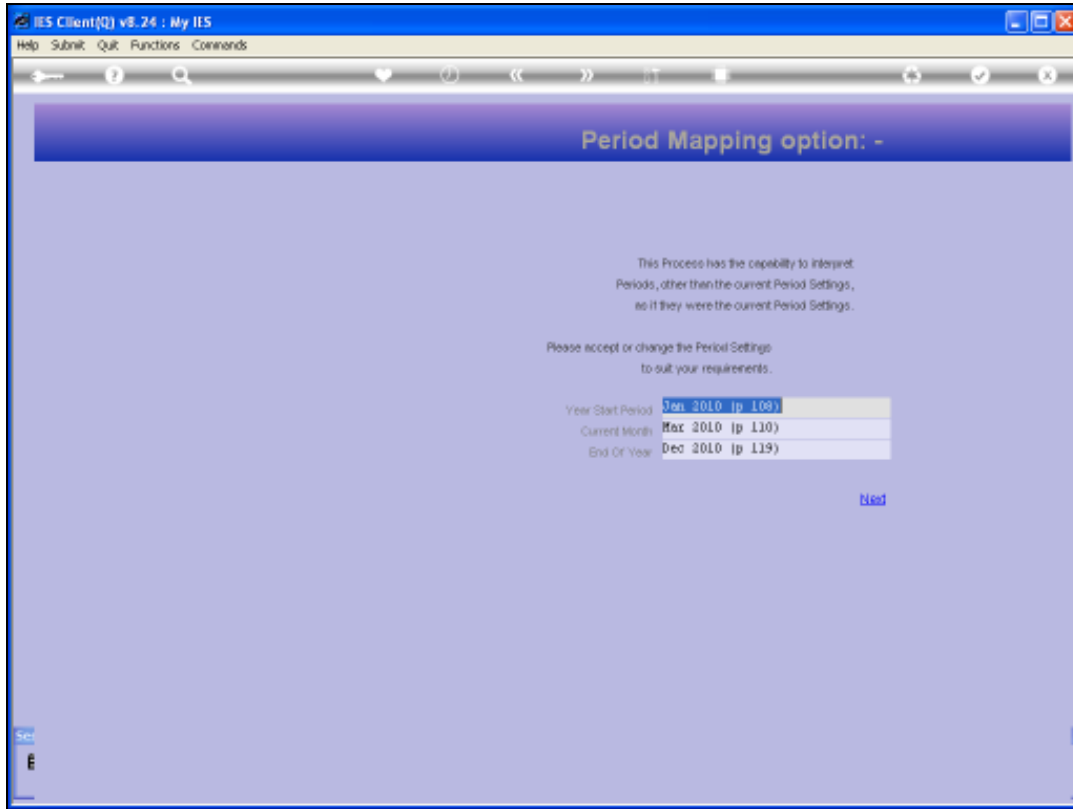


Slide 3
Slide notes:

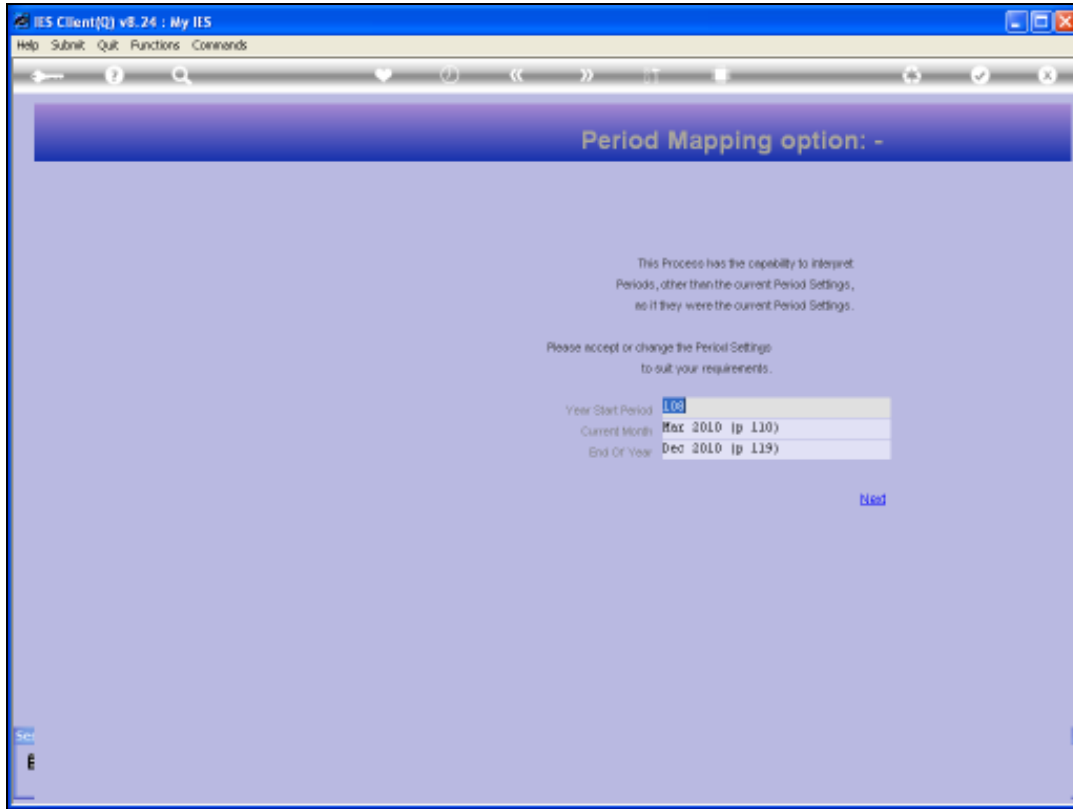


Slide 4

Slide notes: We start with the 'Latest Status' option.



Slide 5
Slide notes:



Slide 6
Slide notes:



Slide 7
Slide notes:



Slide 8
Slide notes:

Q154103109BA.TXT Notepad

File Edit Format View Help

InfoTab (F7) Lock

09:38:19 10 MAR 2010 page 1

Asset Item Register Jan 2010 - Mar 2010

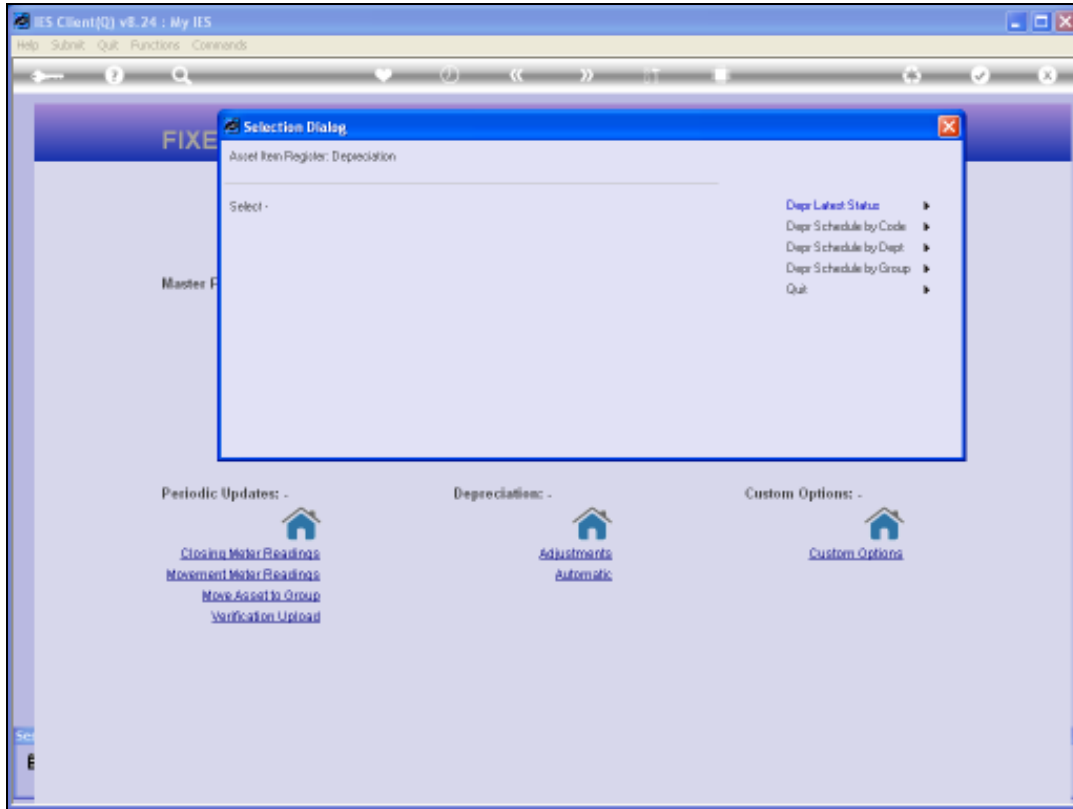
Key.....	Group..	Description.....	Depreciation Category	Last Depr Calc.....	Accum Depr
20015-01	21	Acer 7600	22.24 per annum	Feb 2010 (p 109)	541.14
20016-01	21	Acer 7600	22.24 per annum	Feb 2010 (p 109)	541.14
20015-01	21	HP 5615	22.24 per annum	Feb 2010 (p 109)	624.39
20017-01	21	Apple iMac 21	22.24 per annum	Feb 2010 (p 109)	1,040.64
20018-01	21	Apple iMac 27	22.24 per annum	Feb 2010 (p 109)	1,290.39
20020-01	21	Apple MacBook Pro 12	22.24 per annum	Feb 2010 (p 109)	1,040.64
20021-01	21	Apple MacBook Pro 15	22.24 per annum	Feb 2010 (p 109)	1,290.39
20021-01	21	Apple MacBook Pro 17	22.24 per annum	Feb 2010 (p 109)	2,122.99
20022-01	21	Apple MacBook Pro 15	22.24 per annum	Feb 2010 (p 109)	1,290.39
20027-01	21	Apple iMac 21	22.24 per annum	Feb 2010 (p 109)	1,040.64
20028-01	21	Apple iMac 21	22.24 per annum	Feb 2010 (p 109)	1,040.64
++					-----
21					11,963.29
20010-01	22	AC SPLIT DAMASOMIC CS 120PH 1.5 FH	22.24 per annum	Feb 2010 (p 109)	277.52
20011-01	22	AC SPLIT DAMASOMIC CS 120PH 1.5 FH	22.24 per annum	Feb 2010 (p 109)	277.52
20012-01	22	AC SPLIT DAMASOMIC CS 120PH 1.5 FH	22.24 per annum	Feb 2010 (p 109)	289.40
20013-01	22	AC SPLIT DAIHEIN 1.5PH INVERTER	22.24 per annum	Feb 2010 (p 109)	289.40
20014-01	22	AC SPLIT DAIHEIN 1.5PH INVERTER	22.24 per annum	Feb 2010 (p 109)	266.40
20014-01	22	AC SPLIT DAIHEIN 1.5PH INVERTER	22.24 per annum	Feb 2010 (p 109)	266.40
20017-01	22	AIR CONDITIONER, LG	22.24 per annum	Feb 2010 (p 109)	266.40
20018-01	22	AIR CONDITIONER, LG	22.24 per annum	Feb 2010 (p 109)	266.40
++					-----
22					2,197.94
40010-01	22	TOYOTA COROLLA 1.6	Usage of Veh, Vehicles	Feb 2010 (p 109)	401.69
40011-01	22	HIA PICANTO	Usage of Veh, Vehicles	Feb 2010 (p 109)	316.00
++					-----
22					717.69

					14,779.91

21 record(s) listed

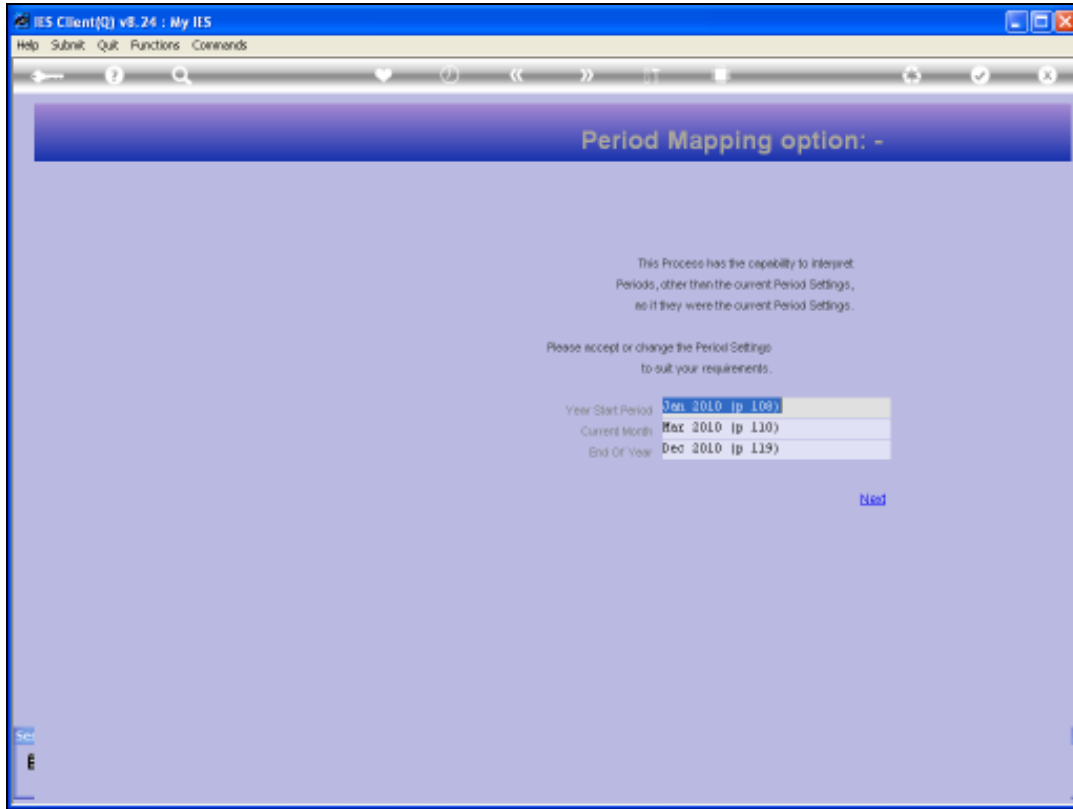
Slide 9

Slide notes: This Report will include the Depreciation Category, Last Depreciation Calculation and Latest Accumulated Depreciation Total.



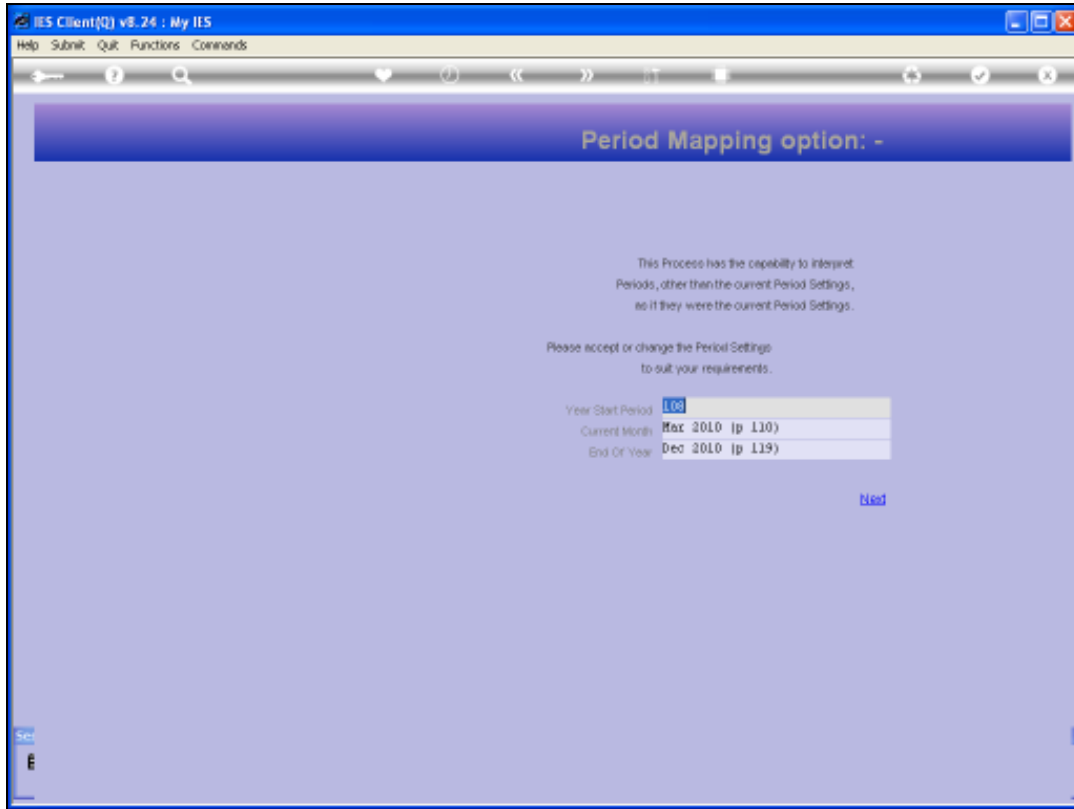
Slide 10

Slide notes: There are also Schedules by Code, Department and Group. Let us do an example.



Slide 11

Slide notes:



Slide 12

Slide notes:



Slide 13
Slide notes:



Slide 14
Slide notes:

Q1541031155A.TXT - Notepad

File Edit Format View Help

InfoTab (F7) Lcd

09:39:15 10 MAR 2010 page 1

Asset Depreciation Schedule by Code. Jan 2010 - Mar 2010

Key.....	Description.....	Dept	Asset Code..	Depr. Catg.....	Purchase Price	Ytd Depr	Accum Depr
20020-01	Apple iMac 21	101		32.24 per annum	12,500.00	493.76	1,040.54
20027-01	Apple iMac 21	101		32.24 per annum	12,500.00	493.76	1,040.54
20023-01	Apple MacBook Pro 15	101		32.24 per annum	15,500.00	960.24	1,290.39
20022-01	Apple MacBook Pro 17	101		32.24 per annum	25,500.00	1,415.24	2,122.39
20021-01	Apple MacBook Pro 15	101		32.24 per annum	15,500.00	960.24	1,290.39
20020-01	Apple MacBook Pro 13	101		32.24 per annum	12,500.00	493.76	1,040.54
20018-01	Apple iMac 27	101		32.24 per annum	15,500.00	960.24	1,290.39
20017-01	Apple iMac 21	101		32.24 per annum	12,500.00	493.76	1,040.54
20015-01	HP 5615	101		32.24 per annum	7,500.00	416.24	624.39
20012-01	Acer 7900	101		32.24 per annum	6,500.00	360.76	541.14
20012-01	Acer 7900	101		32.24 per annum	6,500.00	360.76	541.14
	**				142,500.00	7,908.96	11,963.29
20018-01	ATE CONDITIONER, LG	102		32.24 per annum	2,400.00	122.20	266.40
20017-01	ATE CONDITIONER, LG	102		32.24 per annum	2,400.00	122.20	266.40
20015-01	AC SPLIT DAIHIN 1.5PK INVERTER	102		32.24 per annum	2,400.00	122.20	266.40
20014-01	AC SPLIT DAIHIN 1.5PK INVERTER	102		32.24 per annum	2,400.00	122.20	266.40
20013-01	AC SPLIT DAIHIN 1.5PK INVERTER	102		32.24 per annum	2,600.00	144.30	289.60
20012-01	AC SPLIT PANASONIC CS 1SDPH 1.5 PK	102		32.24 per annum	2,600.00	144.30	289.60
20011-01	AC SPLIT PANASONIC CS 1SDPH 1.5 PK	102		32.24 per annum	2,500.00	129.76	277.52
20010-01	AC SPLIT PANASONIC CS 1SDPH 1.5 PK	102		32.24 per annum	2,500.00	129.76	277.52
	**				19,900.00	1,098.92	2,197.94
40011-01	HIA PICANTO	102		Usage of Pa, Vehicles	120,000.00	316.00	316.00
40010-01	TOYOTA COROLLA 1.6	102		Usage of Pa, Vehicles	185,000.00	401.68	401.68
	**				305,000.00	717.68	717.68
	**				467,300.00	9,725.46	14,778.91

21 record(s) listed

Slide 15

Slide notes: This schedule has additional detail not found in the 1st option, as we can also see the Purchase Price and Year to Date Depreciation, and there is more information to the right of the Report still.

Q1561031155A.TXT - Notepad

File Edit Format View Help

InfoTab (F7) Lock

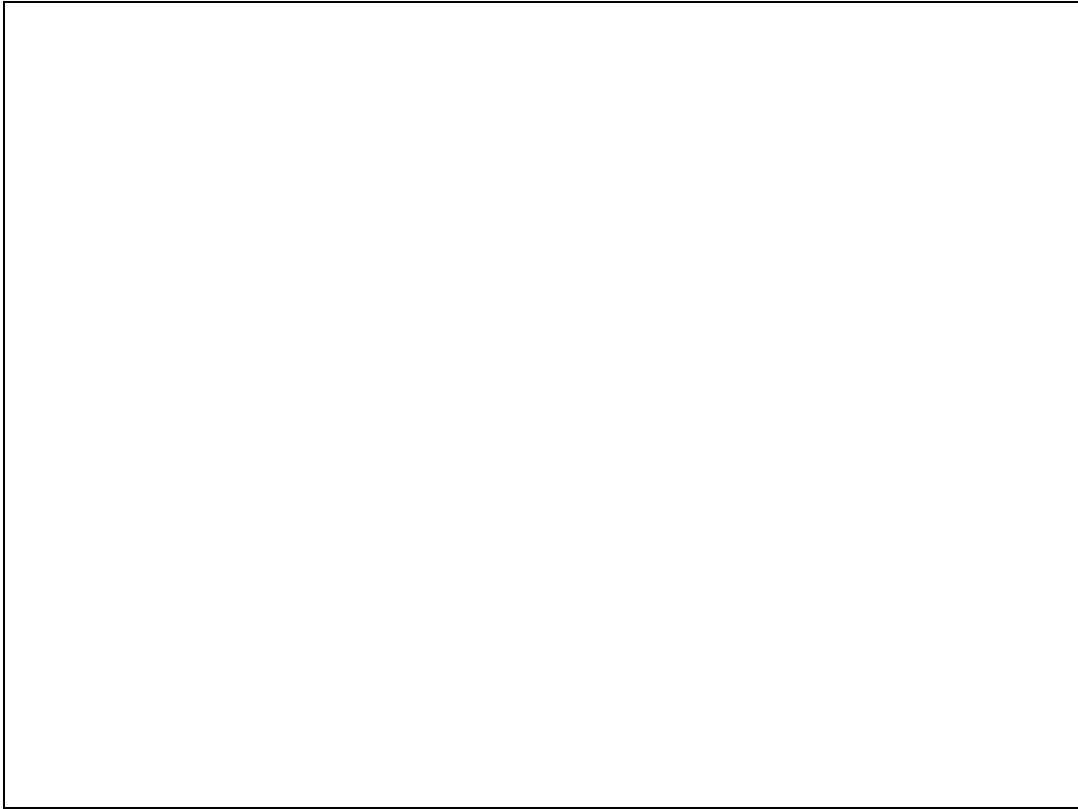
09:39:15 10 MAR 2010 page 1

Asset Depreciation Schedule by Code. Jan 2010 - Mar 2010

Key.....	Description.....	Dept	Asset Code..	Depr. Catg.....	Purchase Price	Ytd Depr	Accum Depr
20020-01	Apple iMac 21	101		32.24 per annum	12,500.00	693.76	1,040.64
20027-01	Apple iMac 21	101		32.24 per annum	12,500.00	693.76	1,040.64
20023-01	Apple MacBook Pro 15	101		32.24 per annum	15,500.00	960.24	1,290.39
20022-01	Apple MacBook Pro 17	101		32.24 per annum	25,500.00	1,415.24	2,122.99
20021-01	Apple MacBook Pro 15	101		32.24 per annum	15,500.00	960.24	1,290.39
20020-01	Apple MacBook Pro 13	101		32.24 per annum	12,500.00	693.76	1,040.64
20018-01	Apple iMac 27	101		32.24 per annum	15,500.00	960.24	1,290.39
20017-01	Apple iMac 21	101		32.24 per annum	12,500.00	693.76	1,040.64
20015-01	HP 5615	101		32.24 per annum	7,500.00	436.24	624.39
20012-01	Acer 7900	101		32.24 per annum	6,500.00	360.76	541.14
20012-01	Acer 7900	101		32.24 per annum	6,500.00	360.76	541.14
	**				142,500.00	7,908.96	11,963.29
20018-01	AIR CONDITIONER, LG	102		32.24 per annum	2,400.00	133.20	266.40
20017-01	AIR CONDITIONER, LG	102		32.24 per annum	2,400.00	133.20	266.40
20015-01	AC SPLIT DAIHIN 1.5PK INVERTER	102		32.24 per annum	2,400.00	133.20	266.40
20014-01	AC SPLIT DAIHIN 1.5PK INVERTER	102		32.24 per annum	2,400.00	133.20	266.40
20013-01	AC SPLIT DAIHIN 1.5PK INVERTER	102		32.24 per annum	2,600.00	144.30	289.60
20012-01	AC SPLIT PANASONIC 93 1200W 1.5 PK	102		32.24 per annum	2,600.00	144.30	289.60
20011-01	AC SPLIT PANASONIC 93 1200W 1.5 PK	102		32.24 per annum	2,500.00	139.76	277.52
20010-01	AC SPLIT PANASONIC 93 1200W 1.5 PK	102		32.24 per annum	2,500.00	139.76	277.52
	**				19,900.00	1,098.92	2,197.94
40011-01	HIA PICANTO	102		Usage of Pa, Vehicles	120,000.00	316.00	316.00
40010-01	TOYOTA COROLLA 1.6	102		Usage of Pa, Vehicles	185,000.00	401.68	401.68
	**				305,000.00	717.68	717.68
	**				467,300.00	9,725.46	14,778.91

21 record(s) listed

Slide 16
 Slide notes:



Slide 17

Slide notes:

Jan 2010 - Mar 2010										
Dept.	Asset Code	Dept	Cont.	Purchase Price	...Tot Dept	Accum. Dept	Net Bk Value	Group	Dis...	
101	35.56	gac	accum.	12,500.00	692.76	1,040.64	11,459.36	E1	Deprec.	
101	35.56	gac	accum.	12,500.00	692.76	1,040.64	11,459.36	E1	Deprec.	
101	35.56	gac	accum.	15,500.00	820.26	1,250.29	14,249.71	E1	Deprec.	
101	35.56	gac	accum.	15,500.00	820.26	1,250.29	14,249.71	E1	Deprec.	
101	35.56	gac	accum.	15,500.00	820.26	1,250.29	14,249.71	E1	Deprec.	
101	35.56	gac	accum.	15,500.00	820.26	1,250.29	14,249.71	E1	Deprec.	
101	35.56	gac	accum.	15,500.00	820.26	1,250.29	14,249.71	E1	Deprec.	
101	35.56	gac	accum.	15,500.00	820.26	1,250.29	14,249.71	E1	Deprec.	
101	35.56	gac	accum.	7,500.00	416.26	624.29	6,875.71	E1	Deprec.	
101	35.56	gac	accum.	6,500.00	360.76	541.14	5,958.86	E1	Deprec.	
101	35.56	gac	accum.	6,500.00	360.76	541.14	5,958.86	E1	Deprec.	
**										
101				142,500.00	7,352.96	11,822.29	130,677.71			
10E	35.56	gac	accum.	2,400.00	122.20	226.40	2,173.60	E2	Deprec.	
10E	35.56	gac	accum.	2,400.00	122.20	226.40	2,173.60	E2	Deprec.	
21720	35.56	gac	accum.	2,400.00	122.20	226.40	2,173.60	E2	Deprec.	
21720	35.56	gac	accum.	2,400.00	122.20	226.40	2,173.60	E2	Deprec.	
21720	35.56	gac	accum.	2,400.00	122.20	226.40	2,173.60	E2	Deprec.	
21720	35.56	gac	accum.	2,400.00	122.20	226.40	2,173.60	E2	Deprec.	
FX 1,5 FF	35.56	gac	accum.	2,600.00	144.30	260.60	2,339.40	E2	Deprec.	
FX 1,5 FF	35.56	gac	accum.	2,600.00	144.30	260.60	2,339.40	E2	Deprec.	
FX 1,5 FF	35.56	gac	accum.	2,600.00	144.30	260.60	2,339.40	E2	Deprec.	
FX 1,5 FF	35.56	gac	accum.	2,600.00	144.30	260.60	2,339.40	E2	Deprec.	
**										
10E				13,400.00	1,096.32	2,197.84	11,202.16			
109			Usage of Pa, Vehicle	180,000.00	216.00	216.00	179,784.00	E3	Deprec.	
109			Usage of Pa, Vehicle	185,000.00	401.69	401.69	184,598.31	E3	Deprec.	
**										
109				365,000.00	717.69	717.69	364,282.31			
				467,900.00	2,785.46	14,790.81	462,811.19			

Slide 18

Slide notes: So we also have the Accumulated Depreciation, Net Book Value, Group, etc.