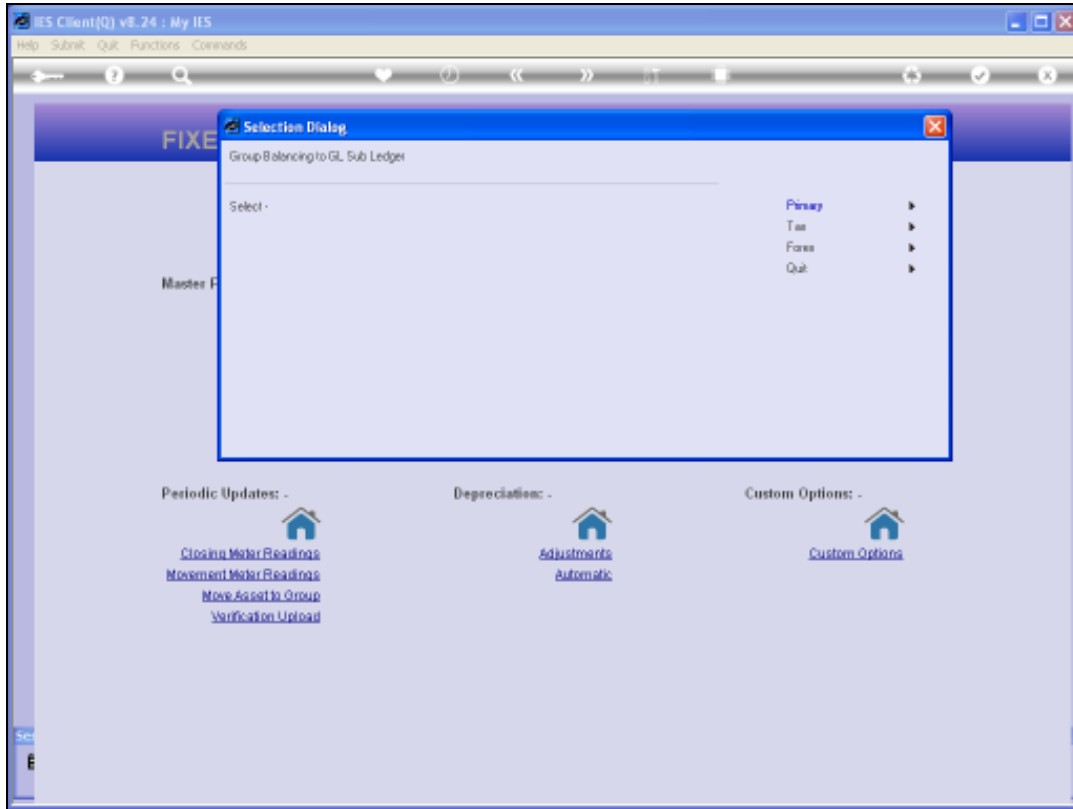




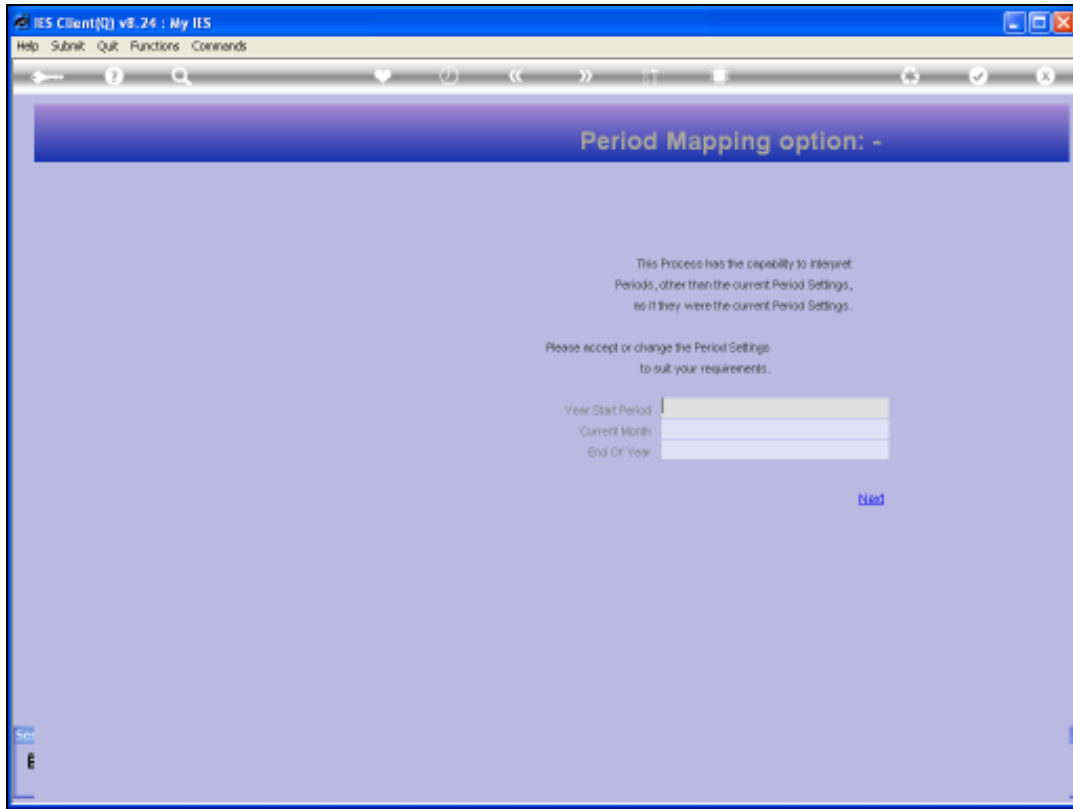
Slide 1

Slide notes: We will now look at the Report for Sub Ledger Balancing of the Asset Groups.

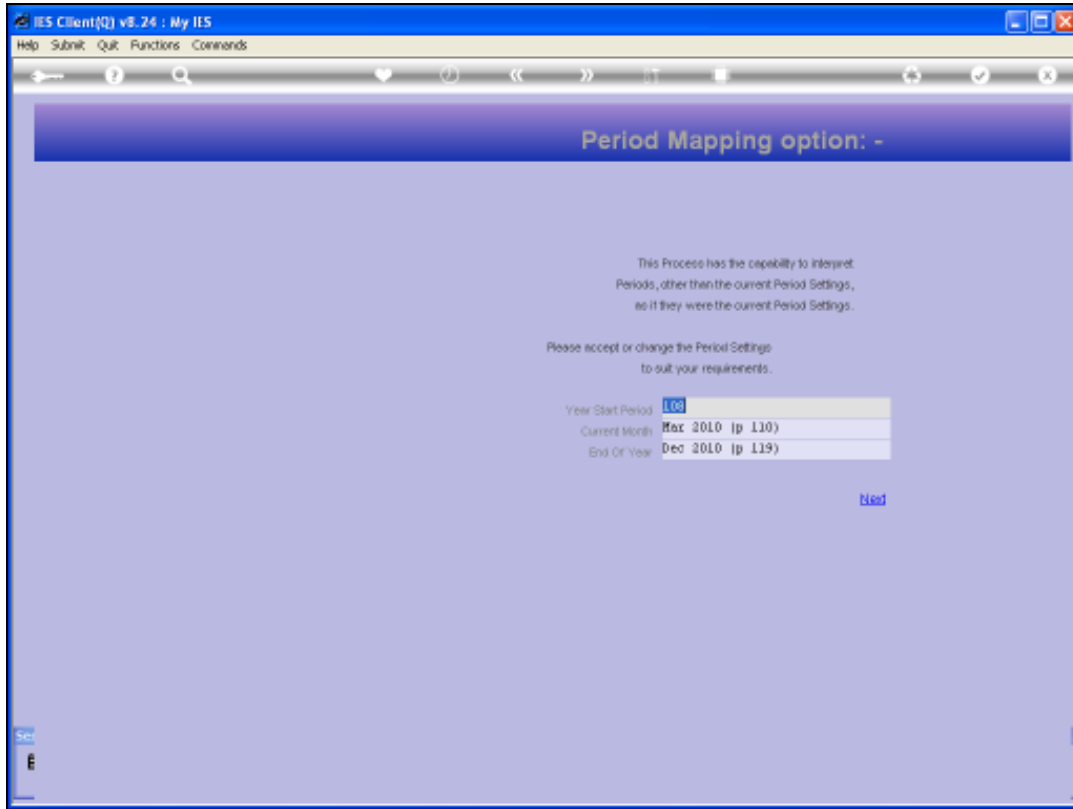


Slide 2

Slide notes: This Report is available for each view. We will do our example on the Primary View.



Slide 3
Slide notes:



Slide 4

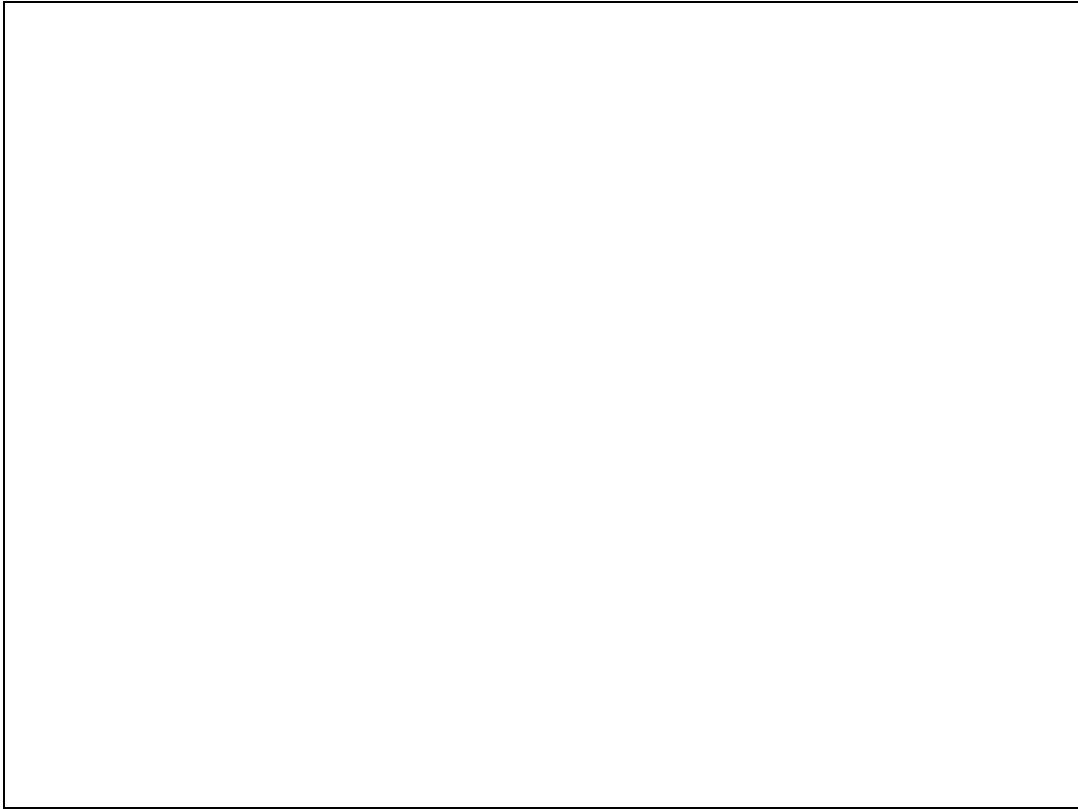
Slide notes: We select our preferred Period Range.



Slide 5
Slide notes:



Slide 6
Slide notes:



Slide 7

Slide notes:



Slide 8
Slide notes:



Slide 9
Slide notes:

```
Q1540974435A.TXT - Notepad
File Edit Format View Help
InfoLab (Pty) Ltd
21:17:15 09 MAR 2010 page 1
Asset Primary Summary Jan 2010 - Mar 2010

Ledgercode..... *Description..... Actual Current .Actual YTD
10-00-00-68 ASSET CAPITAL, VEHICLES 0.00 305,000.00
10-00-00-69 ASSETS, ACCUM DEPR, VEHICLES 0.00 -717.68
10-00-00-70 ASSET CAPITAL, COMPUTERS 0.00 142,500.00
10-00-00-71 ASSETS, ACCUM DEPR, COMPUTERS 0.00 -11,863.29
10-00-00-72 ASSET CAPITAL, AIR CONDITIONERS 0.00 19,800.00
10-00-00-73 ASSETS, ACCUM DEPR, AIR CONDITIONERS 0.00 -2,197.84
                                         -----
                                         452,521.19

reportkey=ASSET-FREN-SUMM
```

Slide 10

Slide notes: And here is the result. Each Asset Group has a Capital and an Accumulated Depreciation Control Account in the General Ledger, and these Accounts balance to the Asset Register Reports. The total shown on this Report represents the Current Net Book Value of the Asset Register.