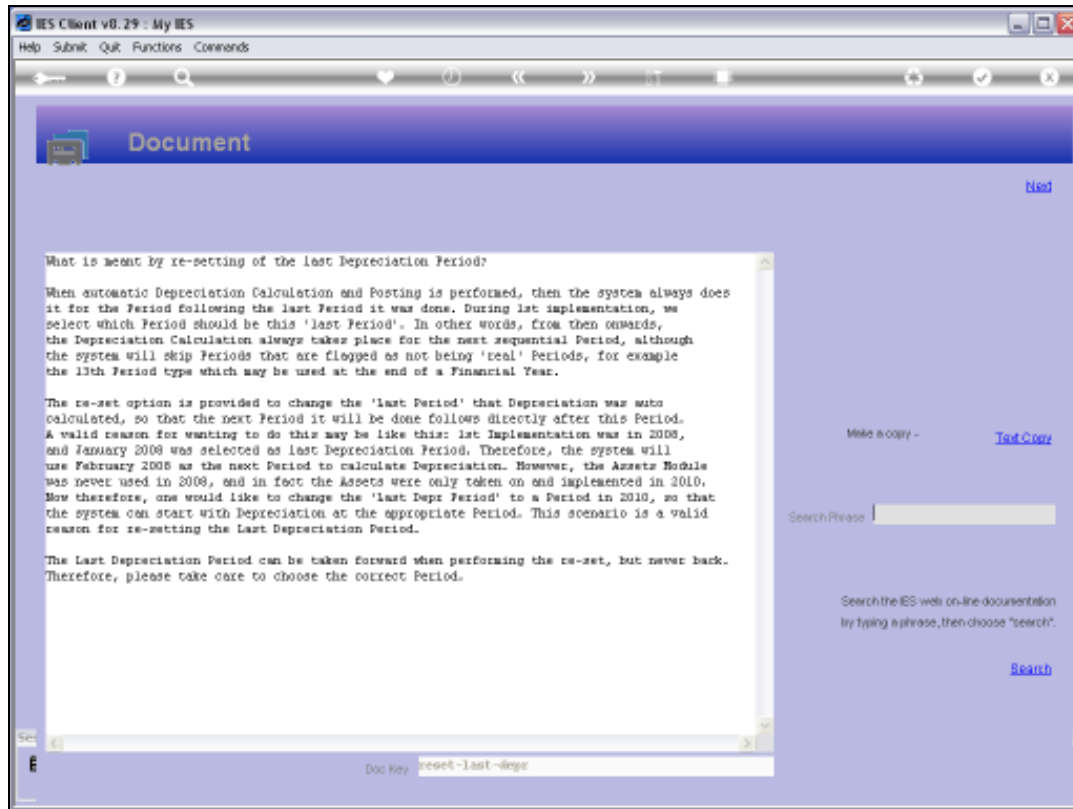




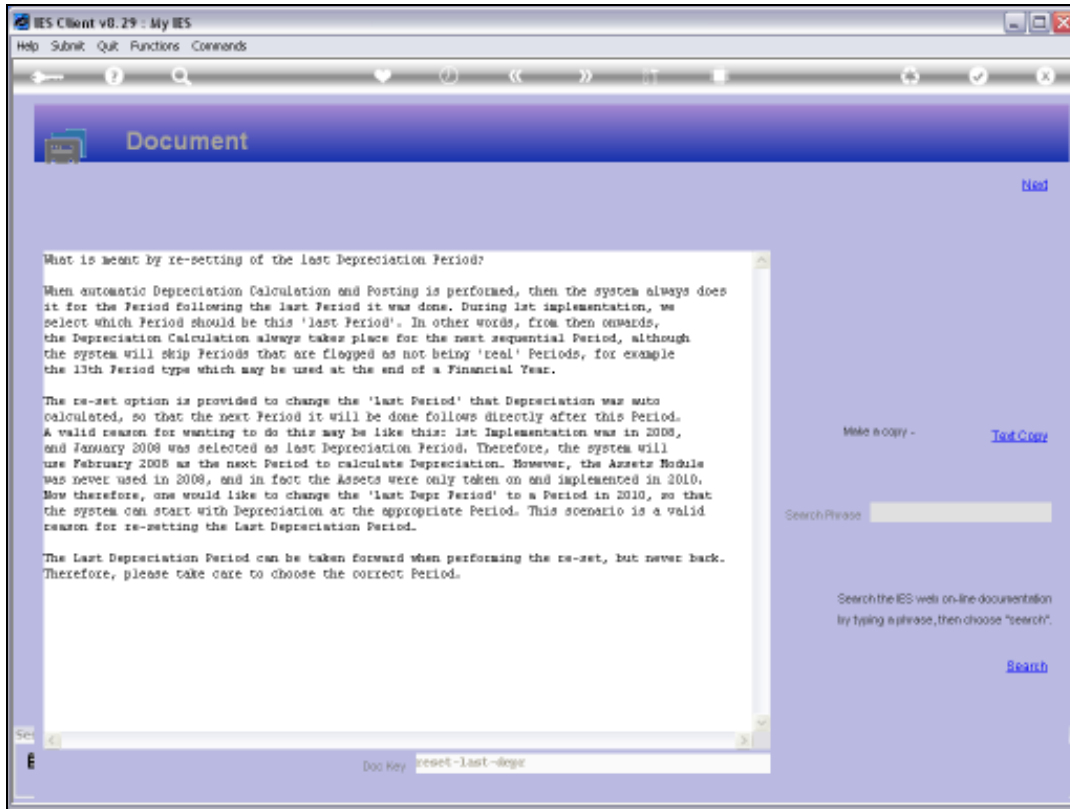
Slide 1

Slide notes: An option is provided for re-setting the Last Depreciation Period.



Slide 2

Slide notes: The Help explains why and when we may want to use this option, and it is certainly not to be used regularly. However, for late implementation of the Asset Module, where we want to move the Last Depreciation Period forward and skip a number of Periods that should not be calculated, it is valid to use this option.



Slide 3
Slide notes:



Slide 4

Slide notes: The system will indicate the current setting, and that we can choose a later Period.



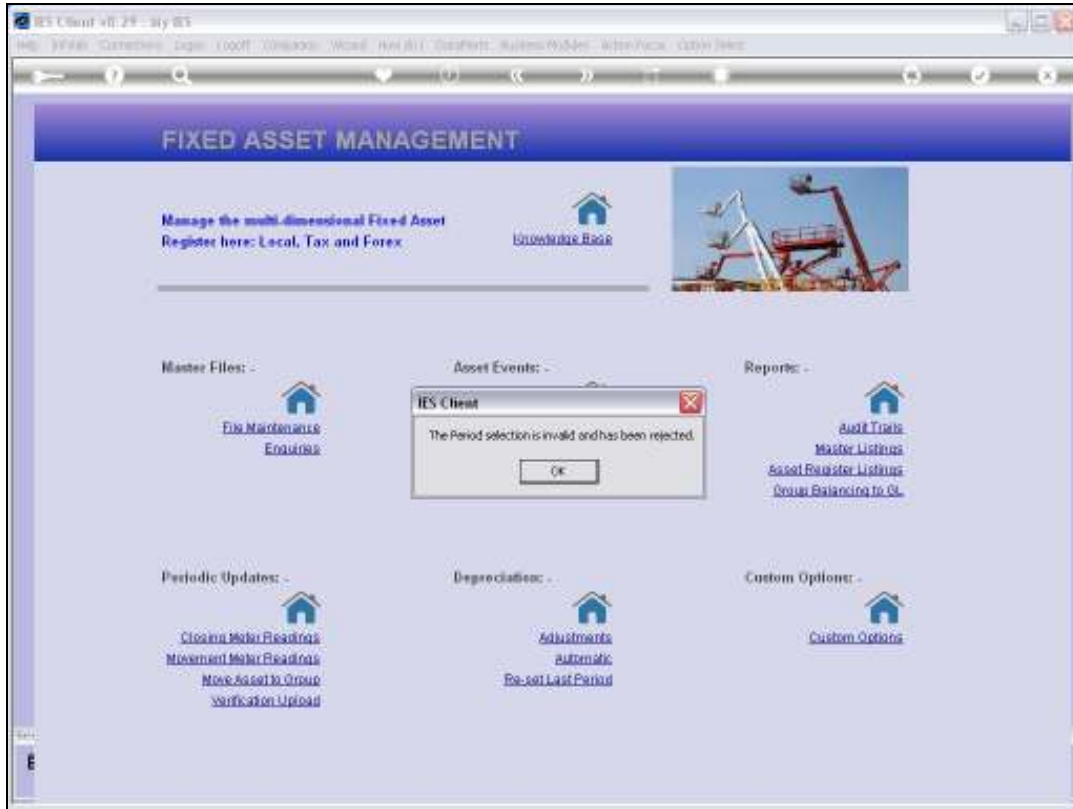
Slide 5
Slide notes:



Slide 6
Slide notes:

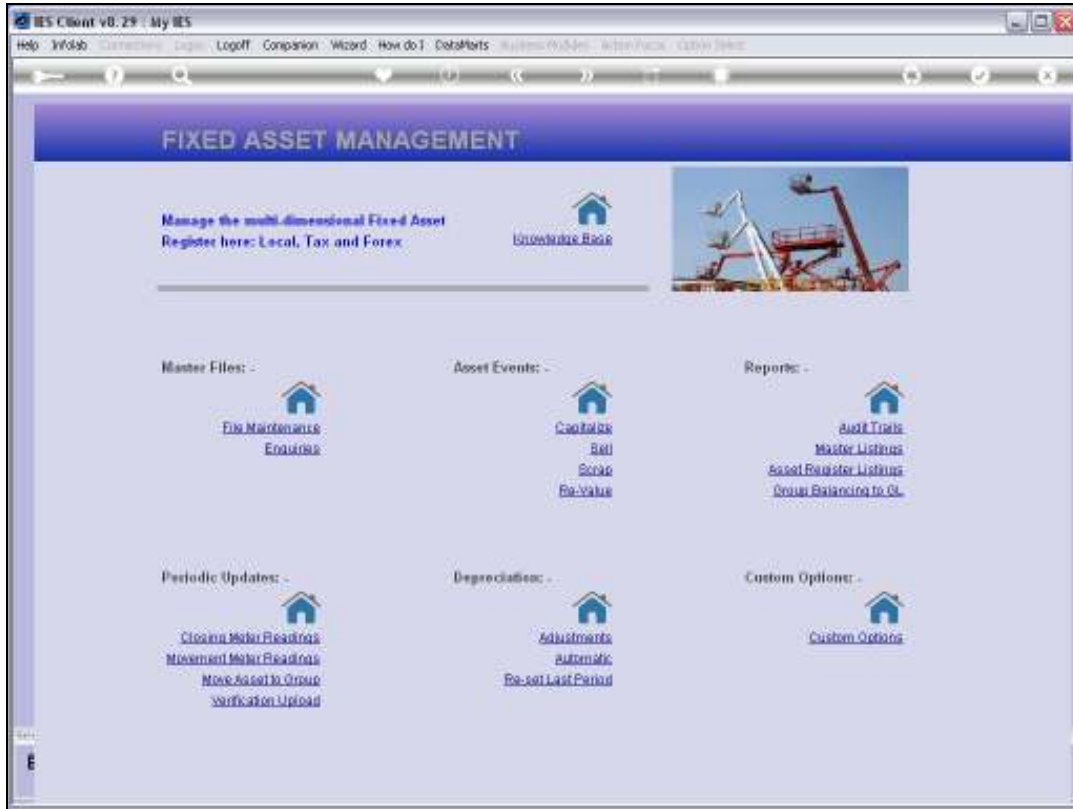


Slide 7
Slide notes:

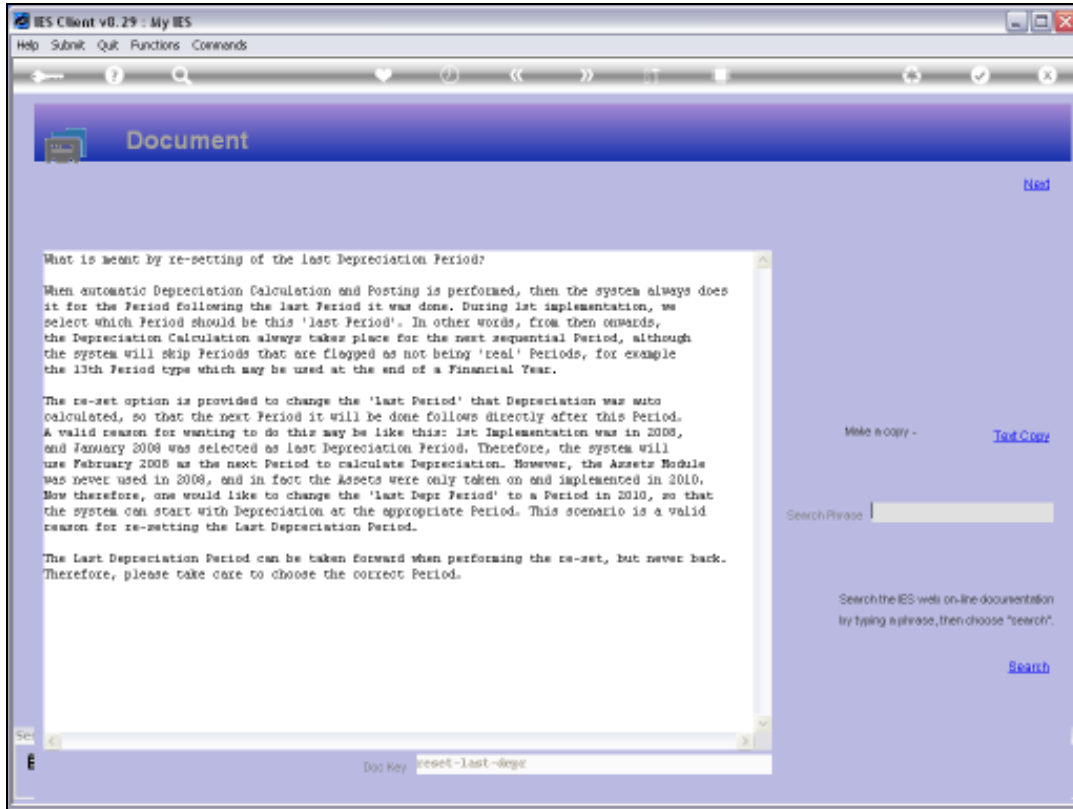


Slide 8

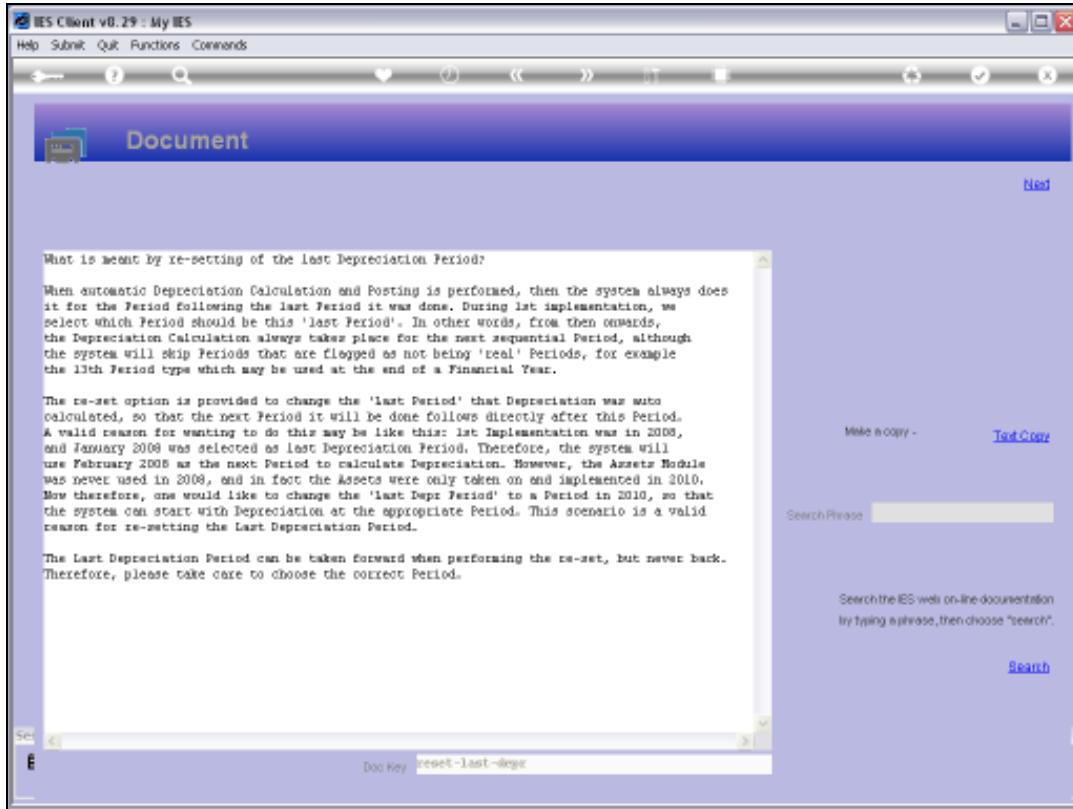
Slide notes: If we do not choose a later Period, then it will be rejected.



Slide 9
Slide notes:



Slide 10
Slide notes:



Slide 11
Slide notes:



Slide 12
Slide notes:

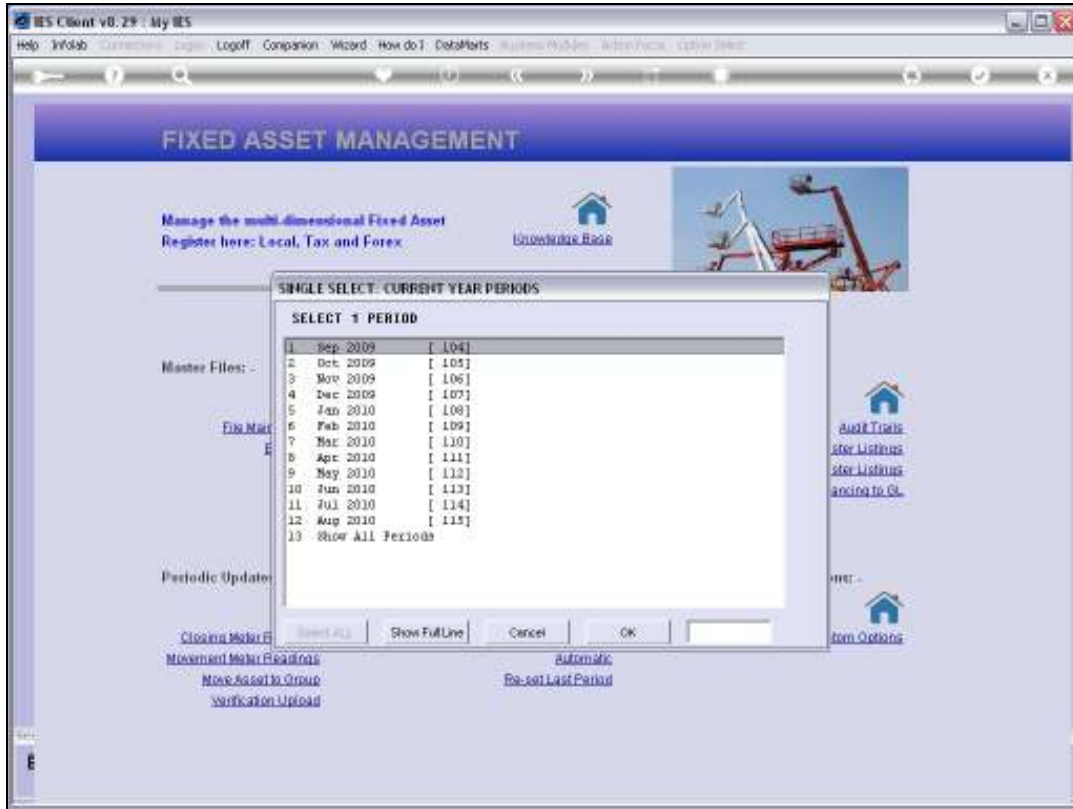


Slide 13

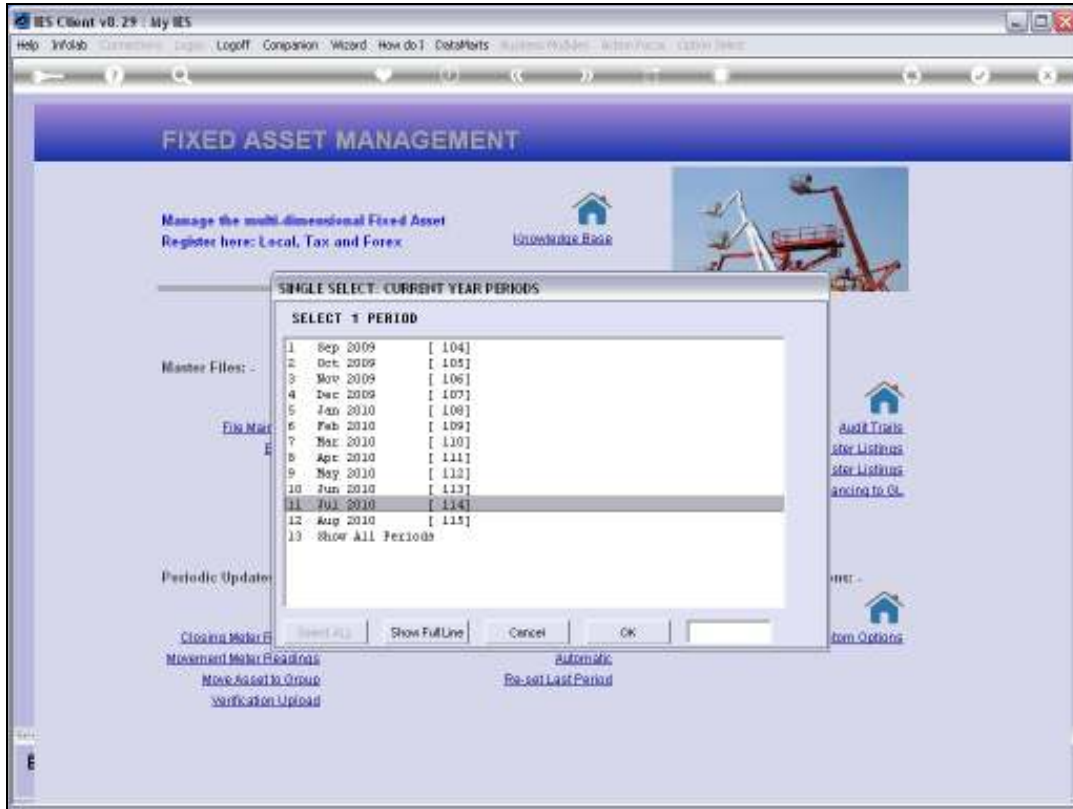
Slide notes:



Slide 14
Slide notes:



Slide 15
Slide notes:



Slide 16

Slide notes: When we choose to re-set and we select a later Period, then the system will accept and install the selected Period as the Last Depreciation Period, but we note that once we have done this, we cannot then select an earlier Period afterwards. The action is irreversible.



Slide 17

Slide notes:



Slide 18

Slide notes: