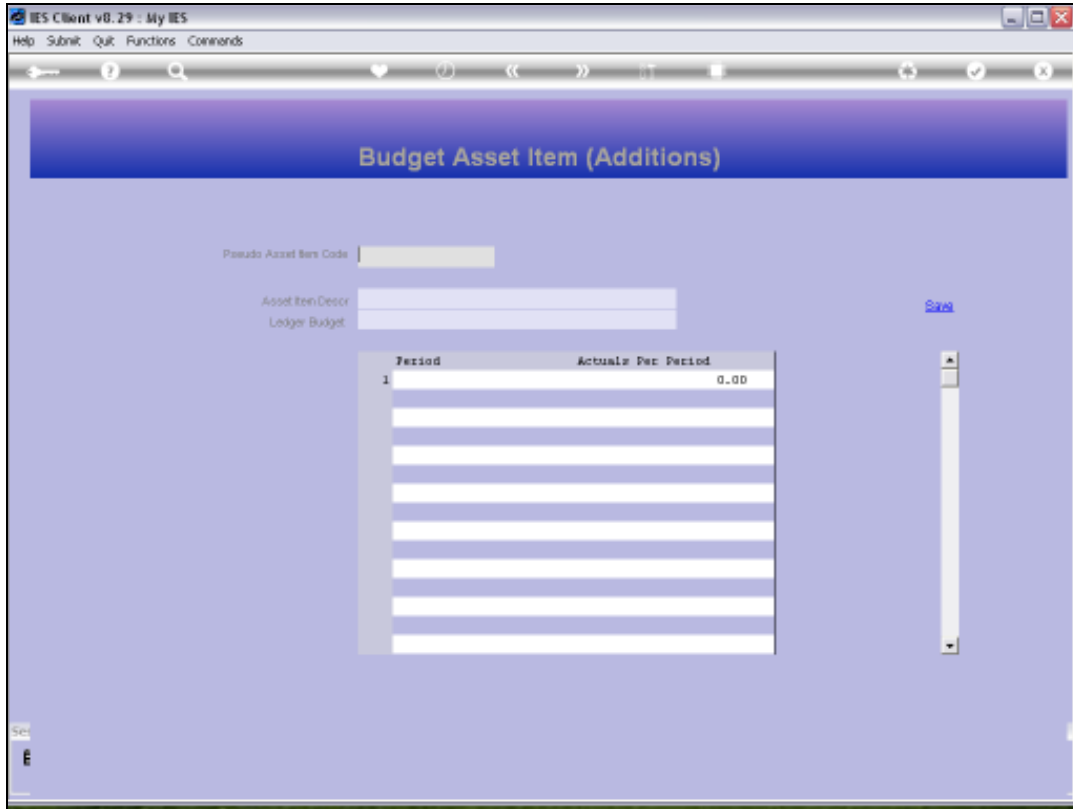




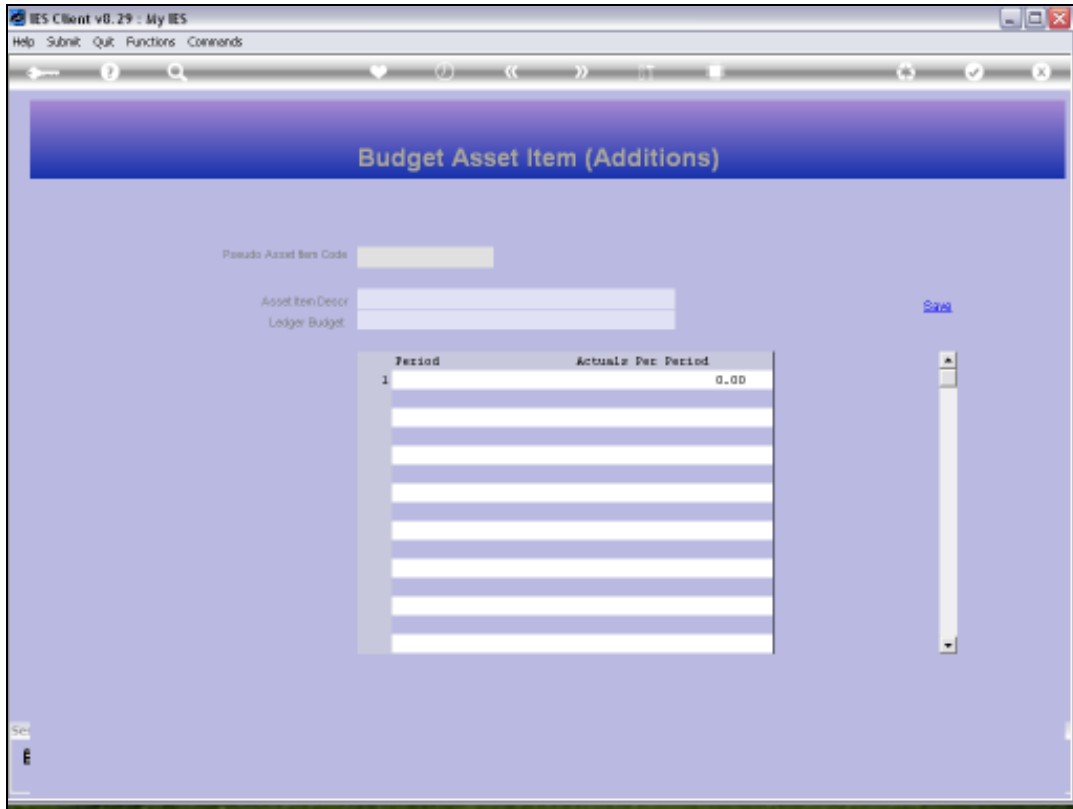
Slide 1

Slide notes: After we have performed the Forecast Calculation, we can record the Asset Additions. What are they? Asset Additions are Assets that we expect to acquire during the new Budget Year, and here we are just including the expected Depreciation Expense on such Asset Additions, NOT the Capital Cost!



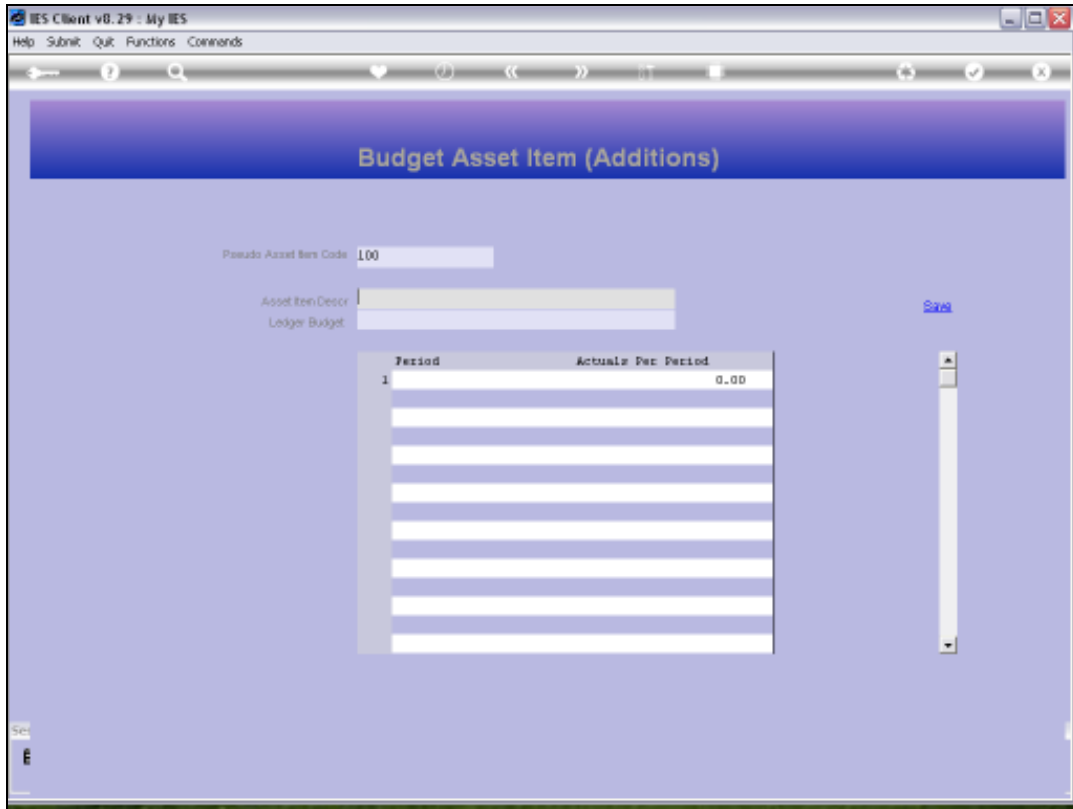
Slide 2

Slide notes: By including expected Asset Item Additions, we include their expected Depreciation in the Asset Depreciation Budget that has already been calculated in the Forecast.



Slide 3

Slide notes: We can use any unique numbers for the Asset Additions, as long as they are not existing Asset Codes.



Slide 4

Slide notes: We state a short Description for the Addition.

IES Client v8.29: My IES

Help Submit Quit Functions Commands

Budget Asset Item (Additions)

Pseudo Asset Item Code: 100

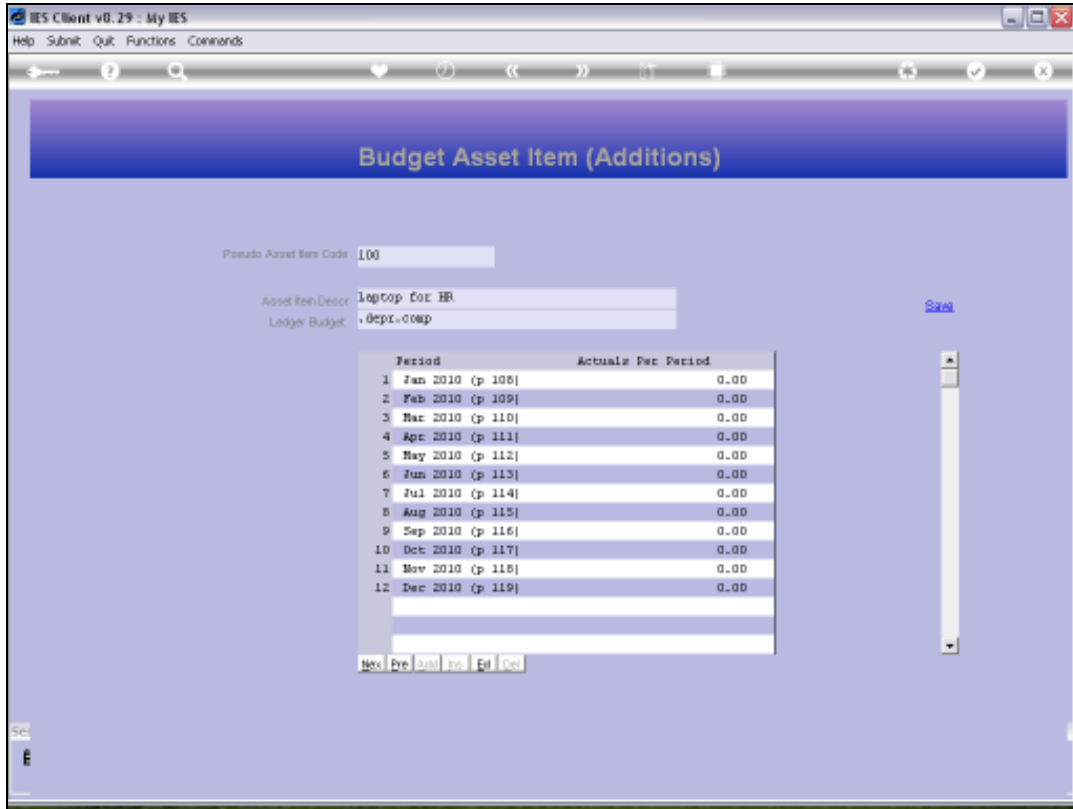
Asset Item Description: Laptop for HR

Ledger Budget: [Save](#)

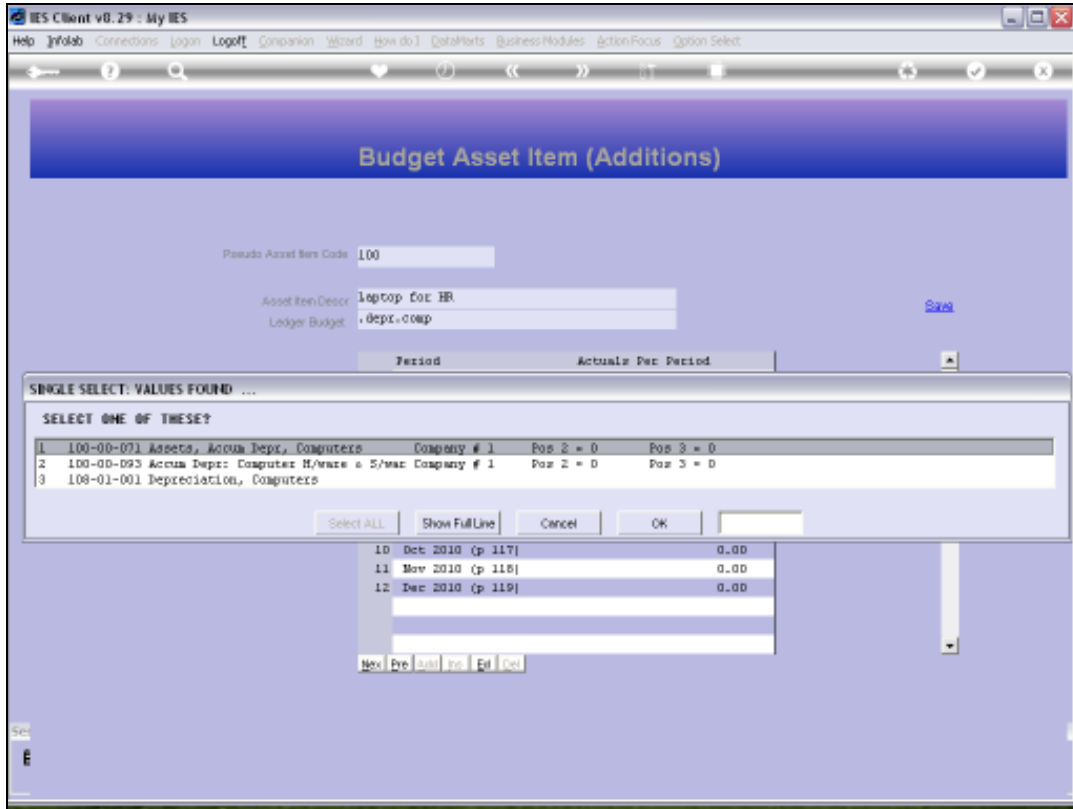
Period	Actuals Per Period
1 Jan 2010 (p 108)	0.00
2 Feb 2010 (p 109)	0.00
3 Mar 2010 (p 110)	0.00
4 Apr 2010 (p 111)	0.00
5 May 2010 (p 112)	0.00
6 Jun 2010 (p 113)	0.00
7 Jul 2010 (p 114)	0.00
8 Aug 2010 (p 115)	0.00
9 Sep 2010 (p 116)	0.00
10 Oct 2010 (p 117)	0.00
11 Nov 2010 (p 118)	0.00
12 Dec 2010 (p 119)	0.00

Slide 5

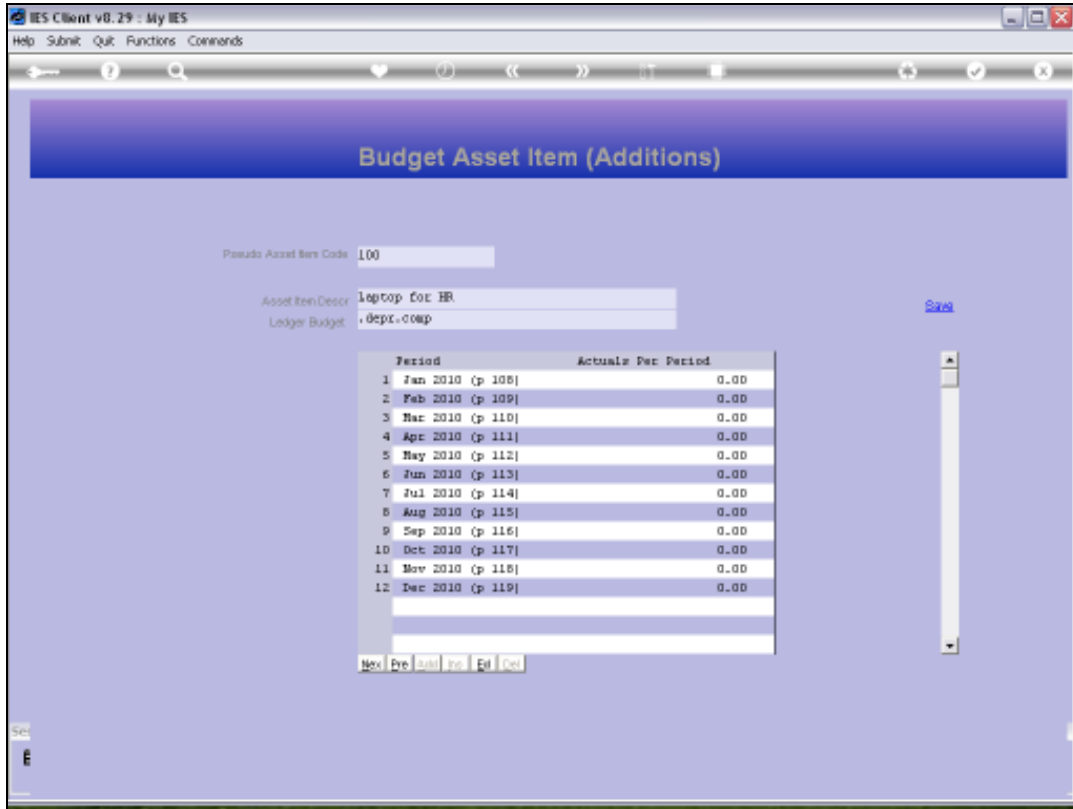
Slide notes: And we have to indicate where the Depreciation will be expensed, because the Items are new and not yet in the Asset Register, so therefore the system will not know otherwise where to budget for this Expense.



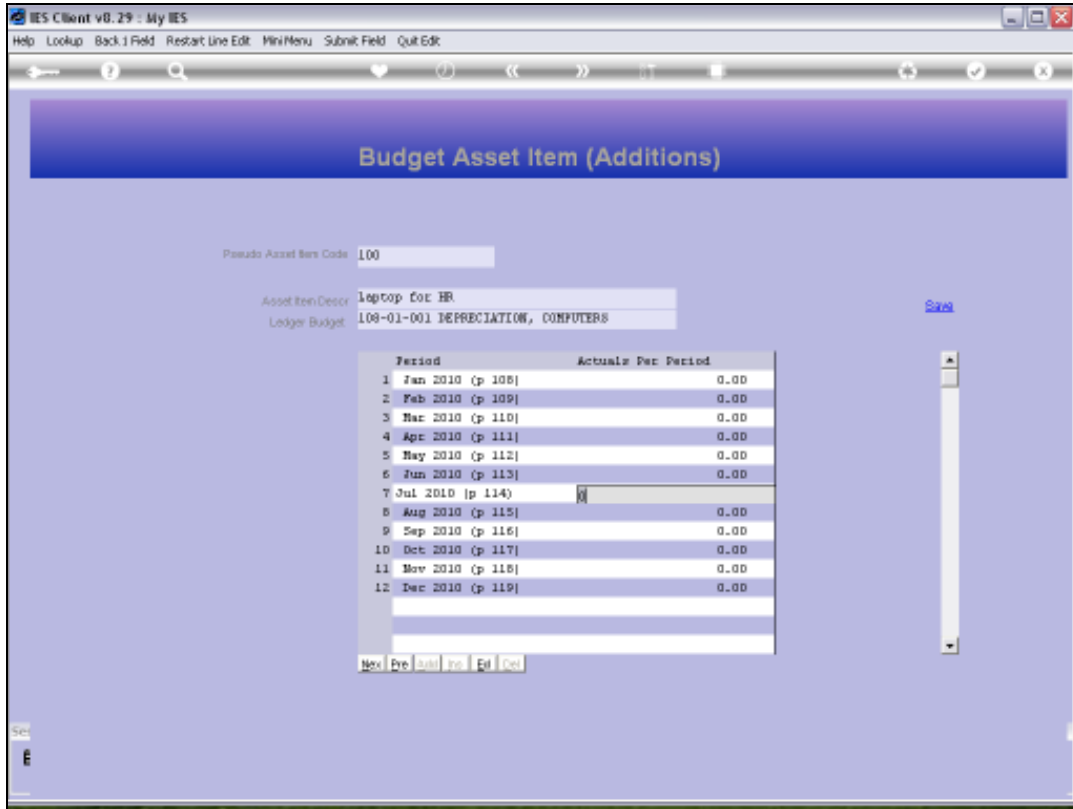
Slide 6
Slide notes:



Slide 7
Slide notes:



Slide 8
Slide notes:



Slide 9
Slide notes:

IES Client v8.29 : My IES

Help Lookup Back:1 Field Restart Line Edit Mini Menu Submit Field Quit Edit

Budget Asset Item (Additions)

Pseudo Asset Item Code: 100

Asset Item Descr: Laptop for HR

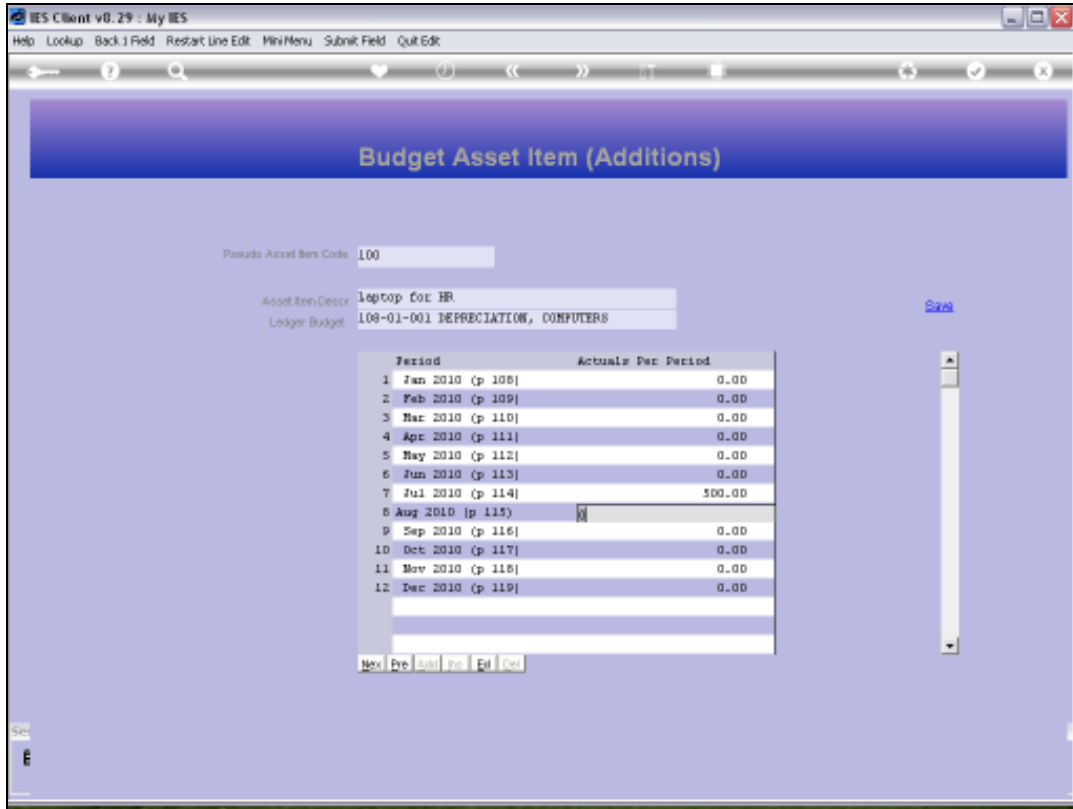
Ledger Budget: 108-01-001 DEPRECIATION, COMPUTERS [Save](#)

Period	Actuals For Period
1 Jan 2010 (p 108)	0.00
2 Feb 2010 (p 109)	0.00
3 Mar 2010 (p 110)	0.00
4 Apr 2010 (p 111)	0.00
5 May 2010 (p 112)	0.00
6 Jun 2010 (p 113)	0.00
7 Jul 2010 (p 114)	0
8 Aug 2010 (p 115)	0.00
9 Sep 2010 (p 116)	0.00
10 Oct 2010 (p 117)	0.00
11 Nov 2010 (p 118)	0.00
12 Dec 2010 (p 119)	0.00

Hex Pre Add Del Edit Del

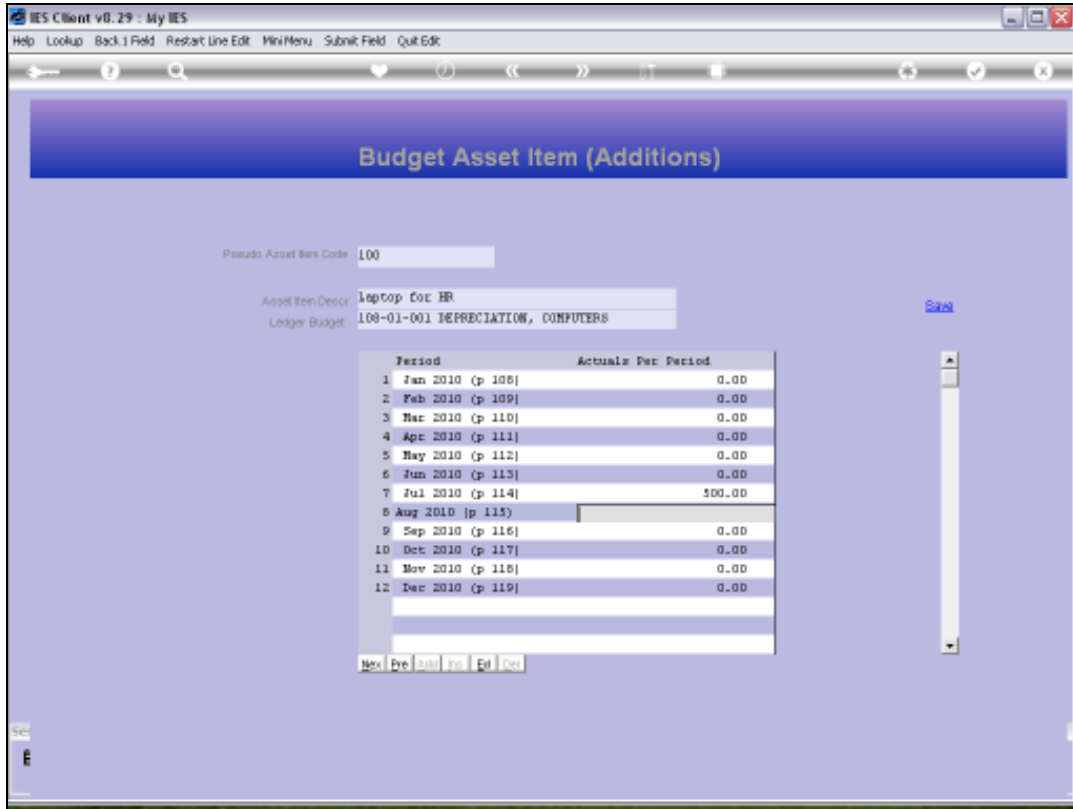
Slide 10

Slide notes: And then we simply Budget for the expected Depreciation in the Months following expected acquisition.



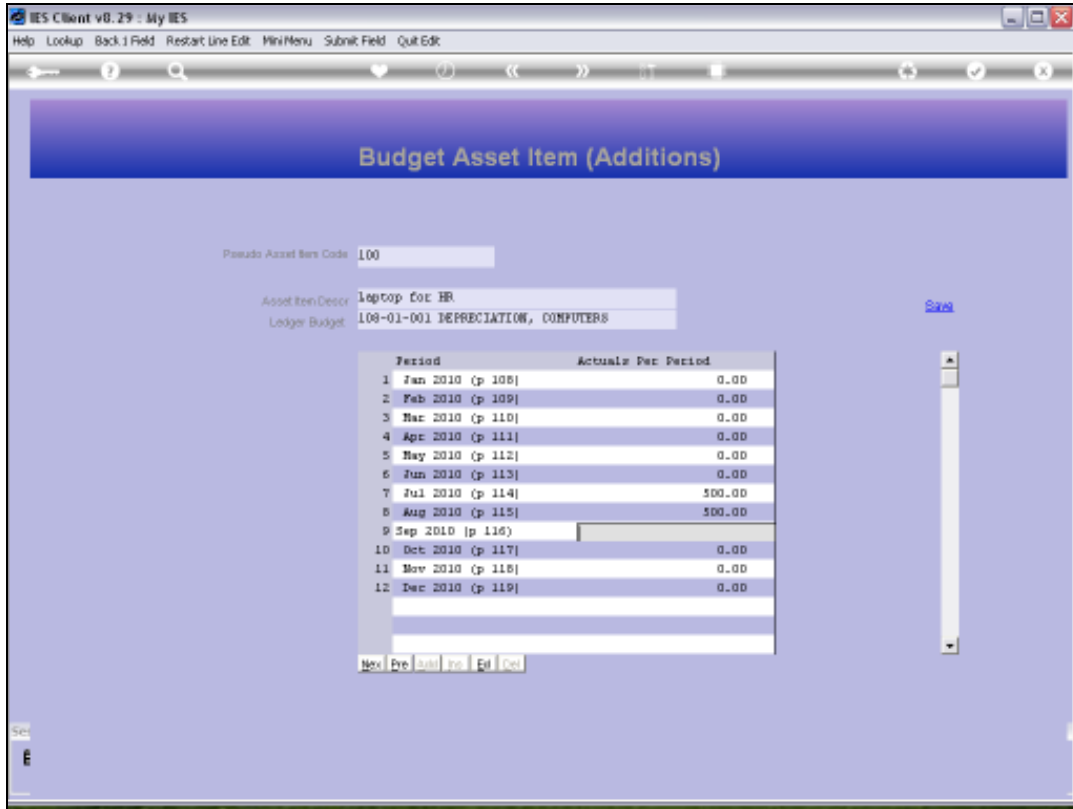
Slide 11

Slide notes:



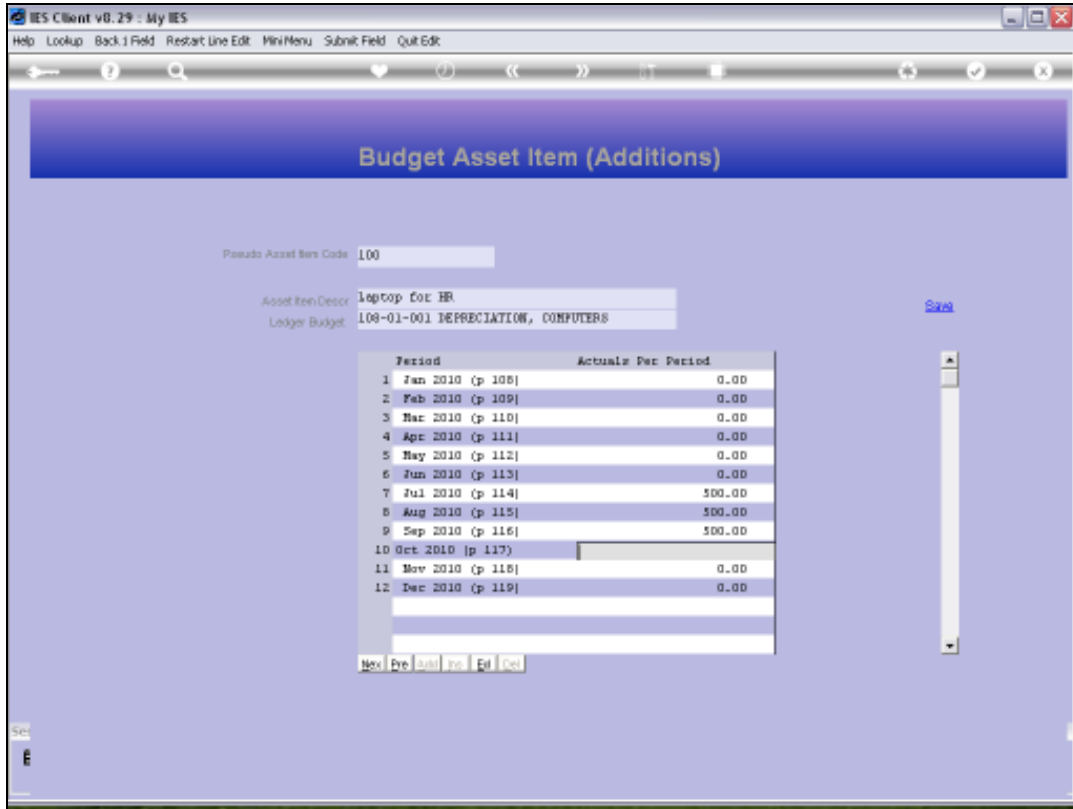
Slide 12

Slide notes:



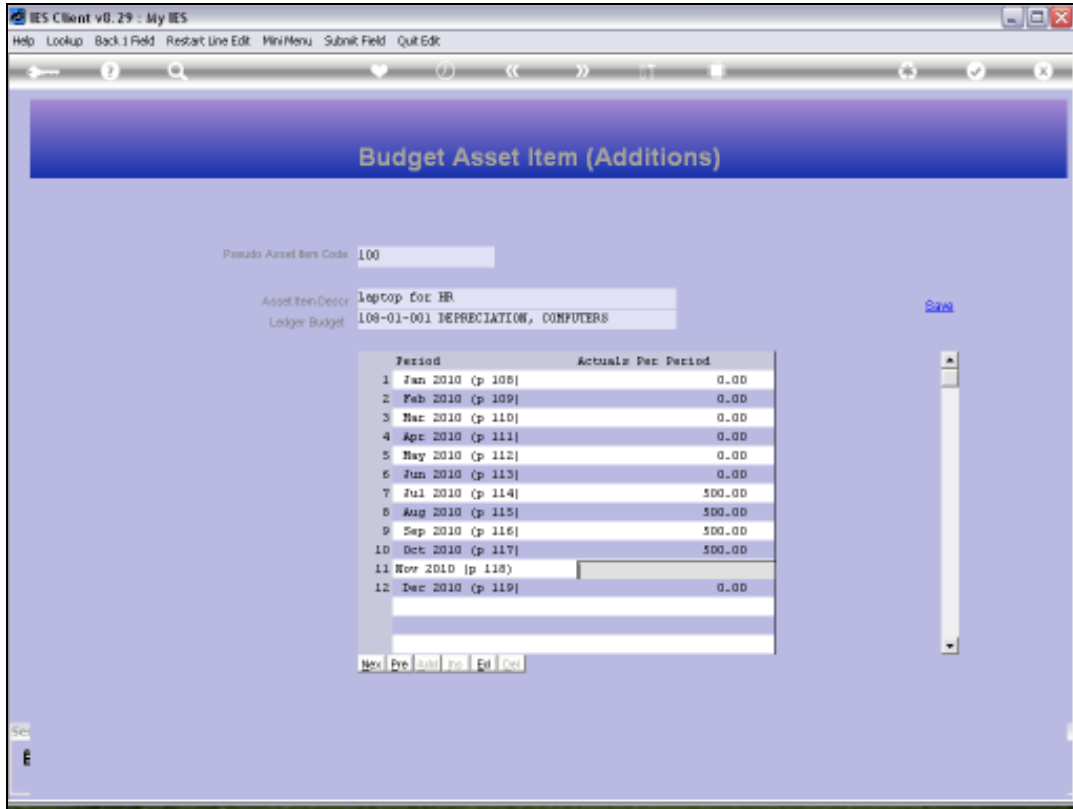
Slide 13

Slide notes:



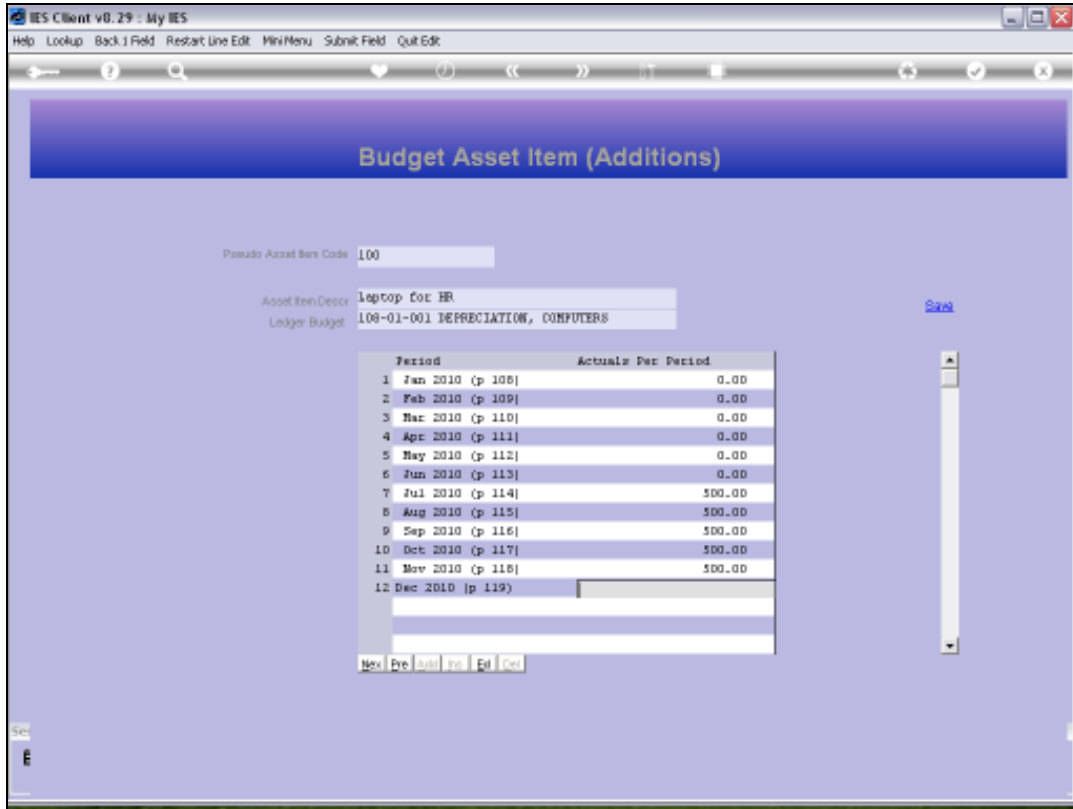
Slide 14

Slide notes:



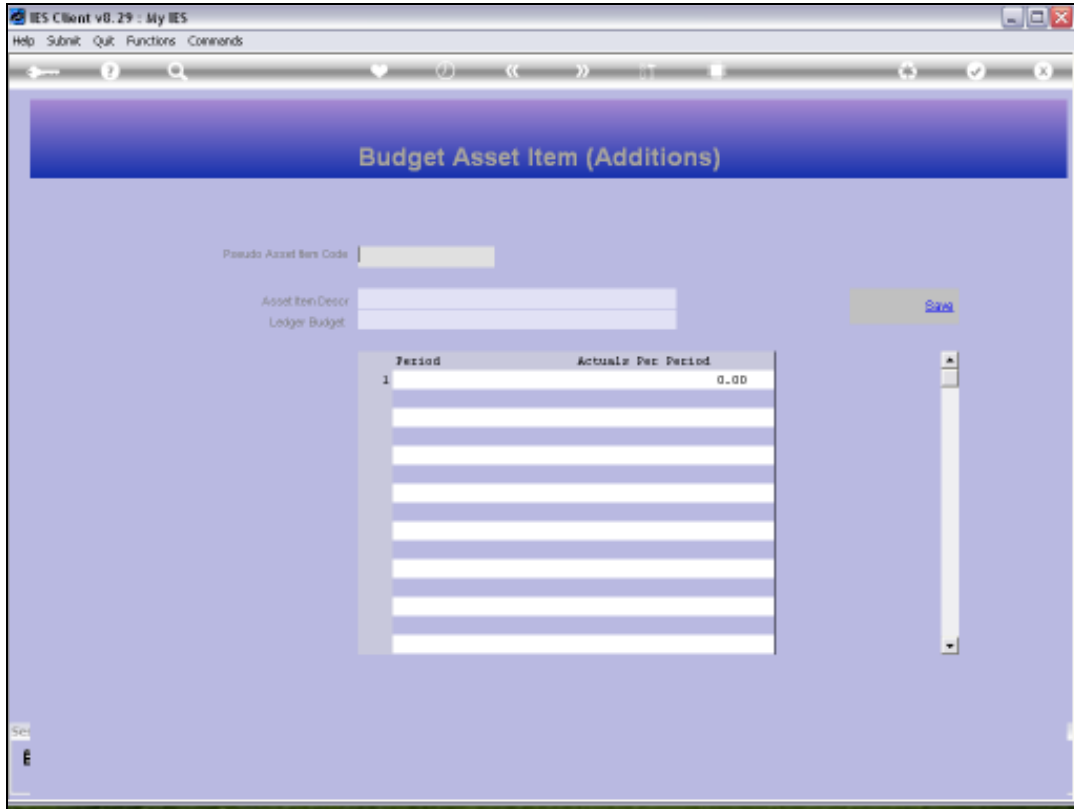
Slide 15

Slide notes:



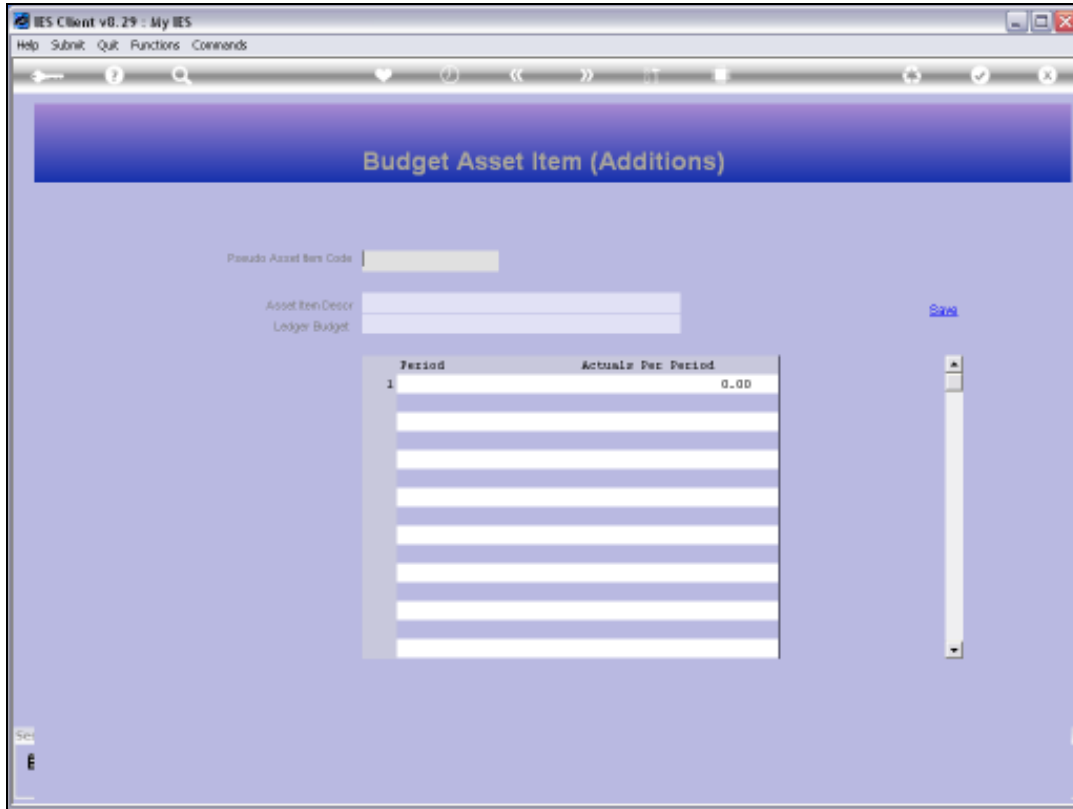
Slide 16

Slide notes: This we do for all our expected Asset acquisitions in the new Budget Year.



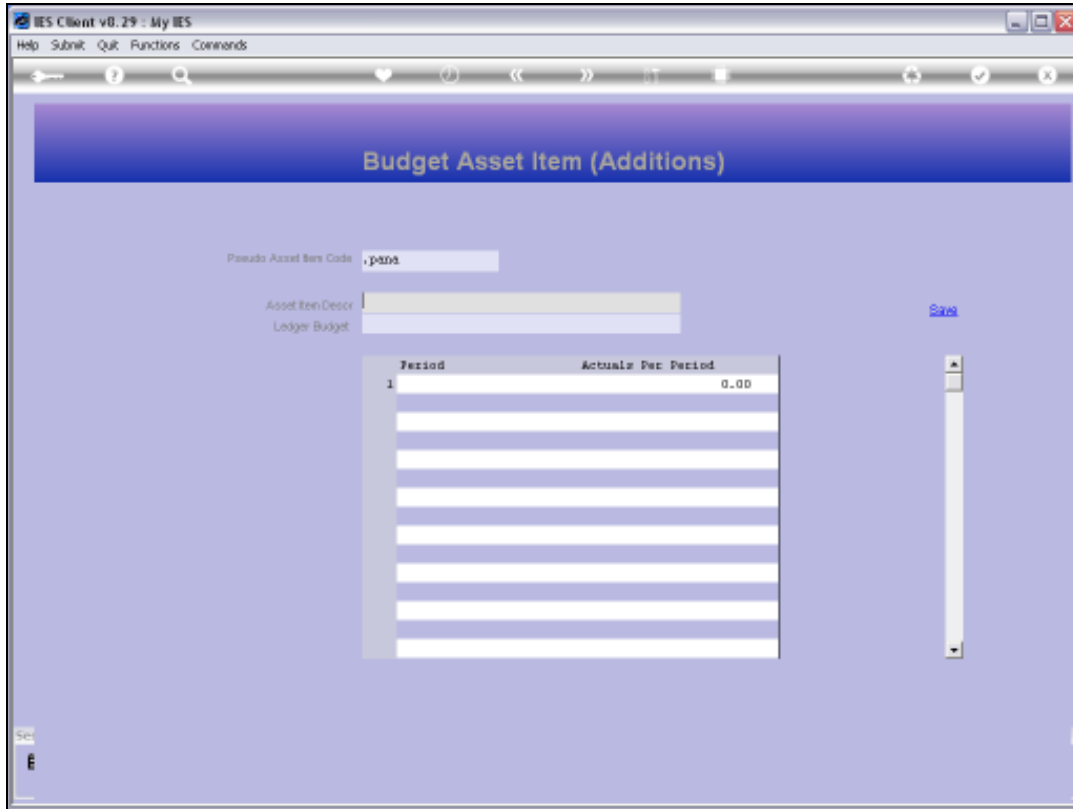
Slide 17

Slide notes:



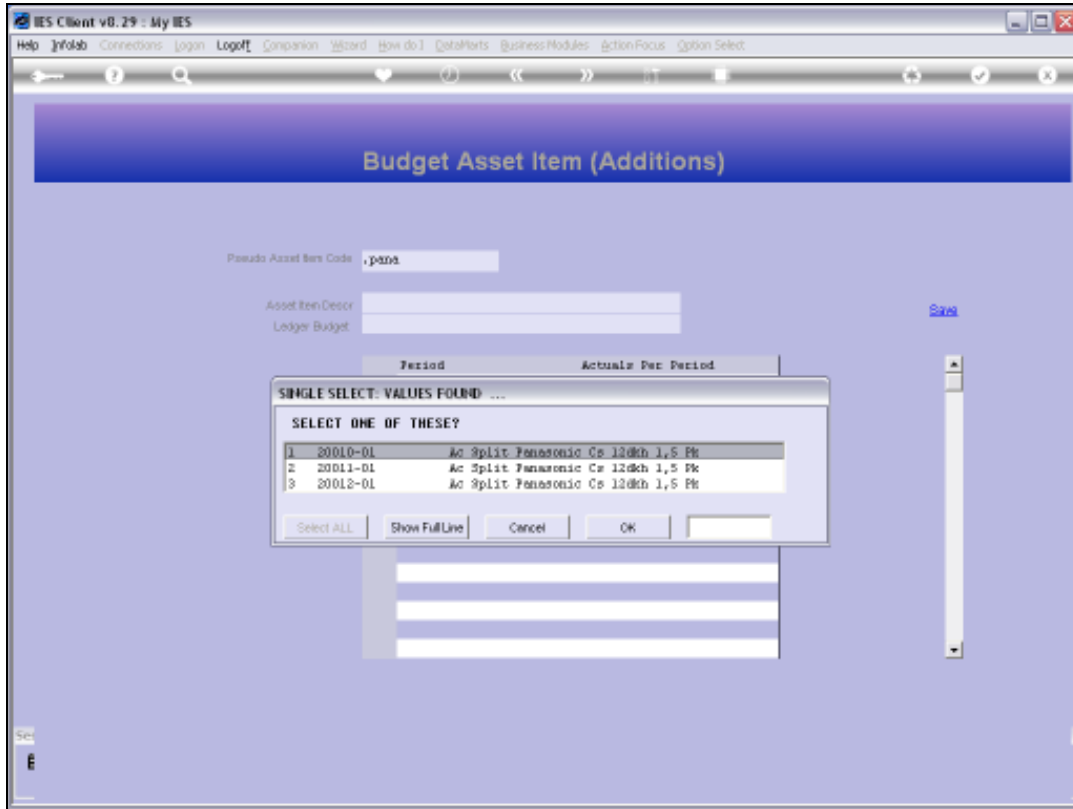
Slide 18

Slide notes: The Asset Additions are included in the same pool with the 'already calculated' Forecast Items, and we can edit any of the existing Asset Items or any of the Additions, as needed.

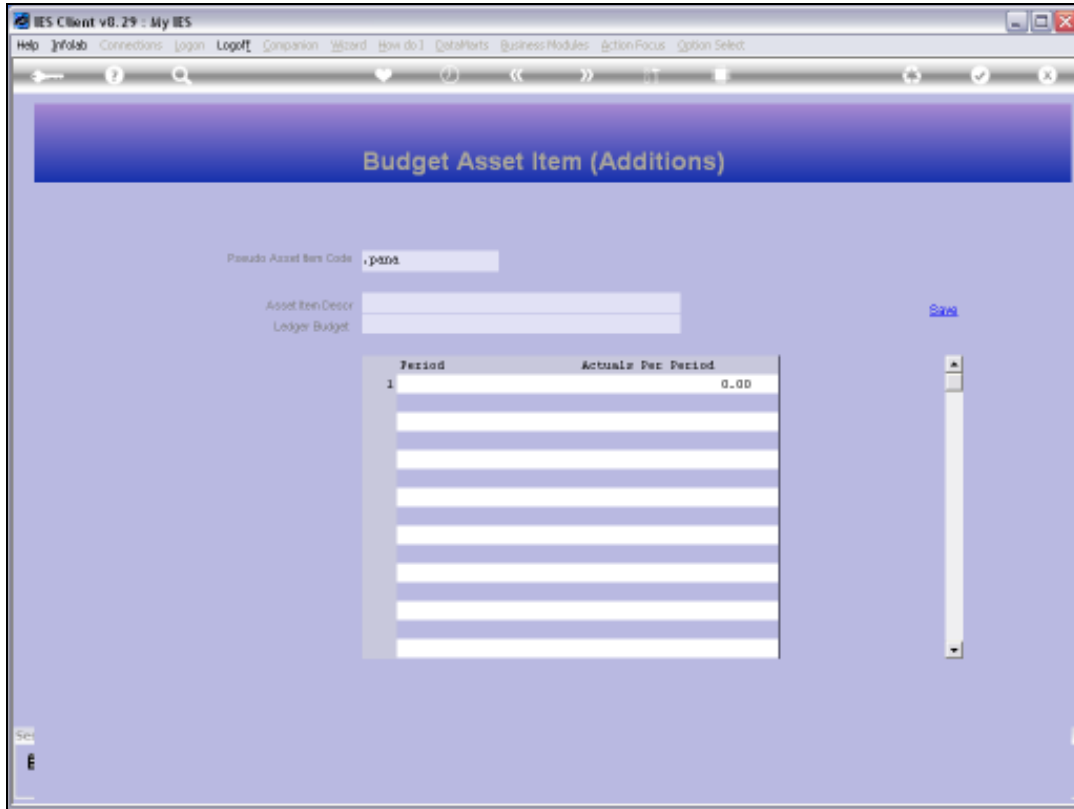


Slide 19

Slide notes:



Slide 20
Slide notes:



Slide 21

Slide notes:

IES Client v8.29 : My IES

Help Submit Quit Functions Commands

Budget Asset Item (Additions)

Pseudo Asset Item Code: 20010-01

Asset Item Descr: AC SPLIT PANASONIC CR 1200H 1.5 FR

Ledger Budget: 108-01-002 DEPRECIATION, AIR CONDITIONERS

Period	Actuals Per Period
1 Jan 2010 (p 108)	69.36
2 Feb 2010 (p 109)	69.36
3 Mar 2010 (p 110)	69.36
4 Apr 2010 (p 111)	69.36
5 May 2010 (p 112)	69.36
6 Jun 2010 (p 113)	69.36
7 Jul 2010 (p 114)	69.36
8 Aug 2010 (p 115)	69.36
9 Sep 2010 (p 116)	69.36
10 Oct 2010 (p 117)	69.36
11 Nov 2010 (p 118)	69.36
12 Dec 2010 (p 119)	69.36

Slide 22

Slide notes: This is an example of an existing Asset Item in the Fixed Asset Register, together with the Depreciation Budget that the system has forecast for the Budget Year.