



## Slide 1

Slide notes: The Asset Depreciation Report will reveal the current Asset Depreciation Budget expense for the next Budget Year. This is based on the calculation of the Forecast on the Fixed Asset Register, i.e. forecast Depreciation for the Budget Year Periods, PLUS any Asset Item Additions that we perform. When this Report is correct to our satisfaction, then we may use the 'transfer' step for the system to put all of this directly into the real Budget.



Slide 2  
Slide notes:

IES Client v8.29 - My IES

Help Submit Quit Functions Comments

IES REPORTS AND QUERIES: - User Instructions

NAME: ASSET ITEM DEPRECIATION BUDGET REPORT

1 - CHOOSE VERSION [Windows](#)

Report Version: SYSTEM version: Asset Item Depreciation Budget

2 - CHOOSE SETTINGS

Format: report

Output: FILE

File Type: Data.html file

Company: 05: Gannay Hoopa Inc

Report Header: Asset Item Depreciation Budget

3 - CHOOSE DATA SELECTOR [Advanced Selection](#)

Element choice: Advanced ASSET DEPRECIATION BUDGET

4 - TO E-MAIL THE RESULTS. Priority: normal

Dispatch By E-Mail [Add Content](#)

Mail To: Asset Item Depreciation Budget Report

Message Body: report by mail

5 - ADAPT DATA SELECTION @ prompts are present

HOW TO ADAPT BY CHOICE

Selection Tip	By Choice
1 Asset Item Key From	0
2 Asset Item Key To	X1

6 - Record Select:

OPEN Records Only

CLOSED Records Only

EITHER

7 - CHOOSE NEXT [Next](#)

## Slide 3

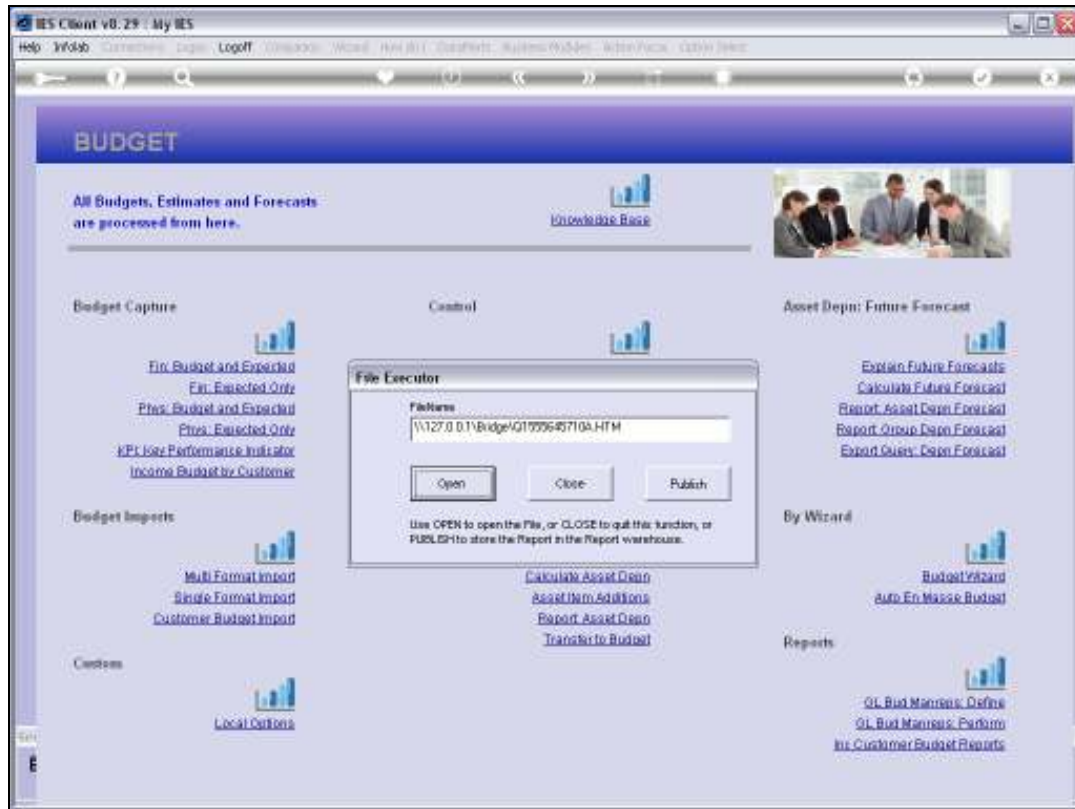
Slide notes: The Report is by default performed for all Asset Keys implied by the wildcards, but we can adapt the range if we want.



Slide 4  
Slide notes:



Slide 5  
Slide notes:



Slide 6  
Slide notes:

hello@gummyhoops.com [www.gummyhoops.com](http://www.gummyhoops.com)

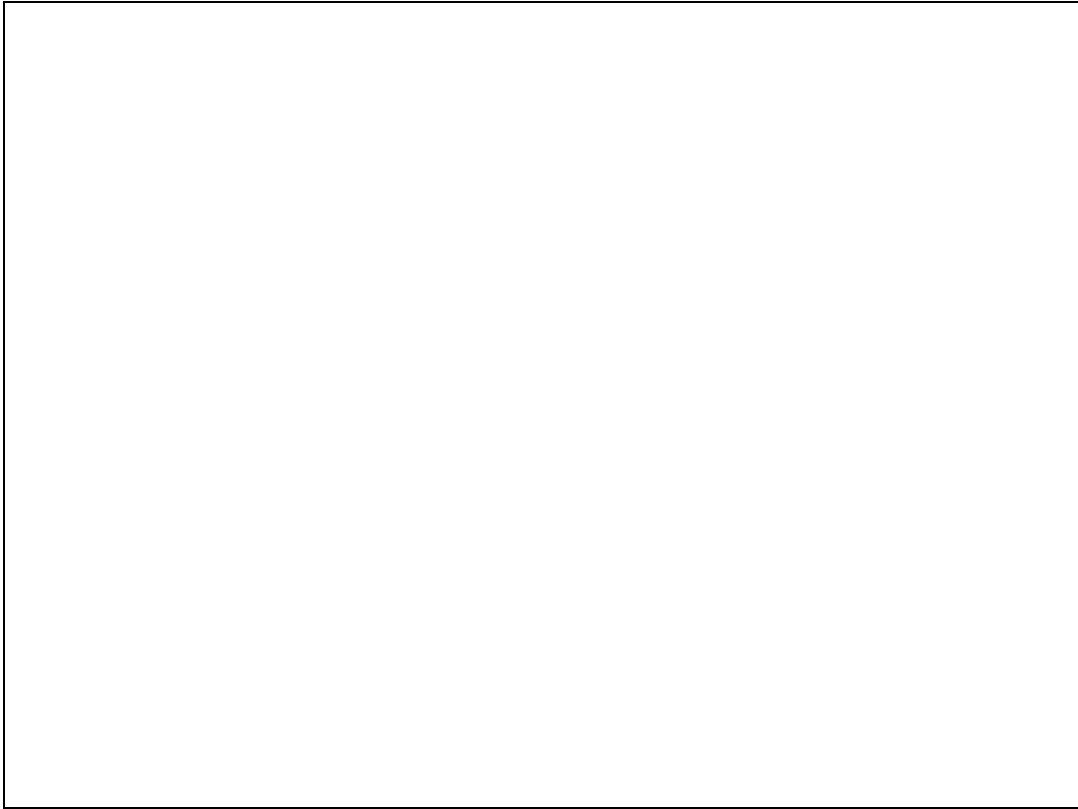
12:39:29 03 AUG 2010 page 1

Asset Item Depreciation Budget

AFORECAST	Asset Item Descr	Dept			
40011-01	XIA PICANTO		300.00	289.20	0.00
			0.00	0.00	292.60
			292.60	292.60	292.60
40010-01	TOYOTA COROLLA 1.6		401.68	376.17	0.00
			0.00	0.00	359.43
			359.43	359.43	359.43
30025-01	Apple iMac 21		346.25	346.25	346.25
			346.25	346.25	346.25
			346.25	346.25	346.25
30027-01	Apple iMac 21		346.25	346.25	346.25
			346.25	346.25	346.25
			346.25	346.25	346.25
30023-01	Apple MacBook Pro 15		430.13	430.13	430.13
			430.13	430.13	430.13
			430.13	430.13	430.13
30022-01	Apple MacBook Pro 17		707.63	707.63	707.63
			707.63	707.63	707.63
			707.63	707.63	707.63
30021-01	Apple MacBook Pro 15		430.13	430.13	430.13
			430.13	430.13	430.13
			430.13	430.13	430.13
30020-01	Apple MacBook Pro 15		346.25	346.25	346.25

Slide 7

Slide notes: And the Report will list each Asset Item with forecast Depreciation, together with 12 Monthly Values shown over 3 rows per Asset Item, and with a Total for the Budget Year on the right.



Slide 8

Slide notes:



Internet Explorer - Windows Internet Explorer  
http://127.0.0.1/Bridge/0155564556/WJ.htm

File Edit View Favorites Tools Help

Google Search Share Sidewiki Check Translate AutoFill Sign In

Free Hitral Suggested Sites Web Site Gallery

InfoLab

s Inc  
www.gummyhoops.com

300.00	269.20	0.00	0.00	Total
0.00	0.00	292.60	292.60	2,324.80
292.60	292.60	292.60	292.60	
401.68	376.17	0.00	0.00	3,114.43
0.00	0.00	389.43	389.43	
389.43	389.43	389.43	389.43	
346.88	346.88	346.88	346.88	4,162.56
346.88	346.88	346.88	346.88	
346.88	346.88	346.88	346.88	
346.88	346.88	346.88	346.88	4,162.56
346.88	346.88	346.88	346.88	
346.88	346.88	346.88	346.88	
430.13	430.13	430.13	430.13	5,161.56
430.13	430.13	430.13	430.13	
430.13	430.13	430.13	430.13	
707.63	707.63	707.63	707.63	5,491.56
707.63	707.63	707.63	707.63	
707.63	707.63	707.63	707.63	
430.13	430.13	430.13	430.13	5,161.56
430.13	430.13	430.13	430.13	
430.13	430.13	430.13	430.13	
346.88	346.88	346.88	346.88	4,162.56

Slide 9  
Slide notes: