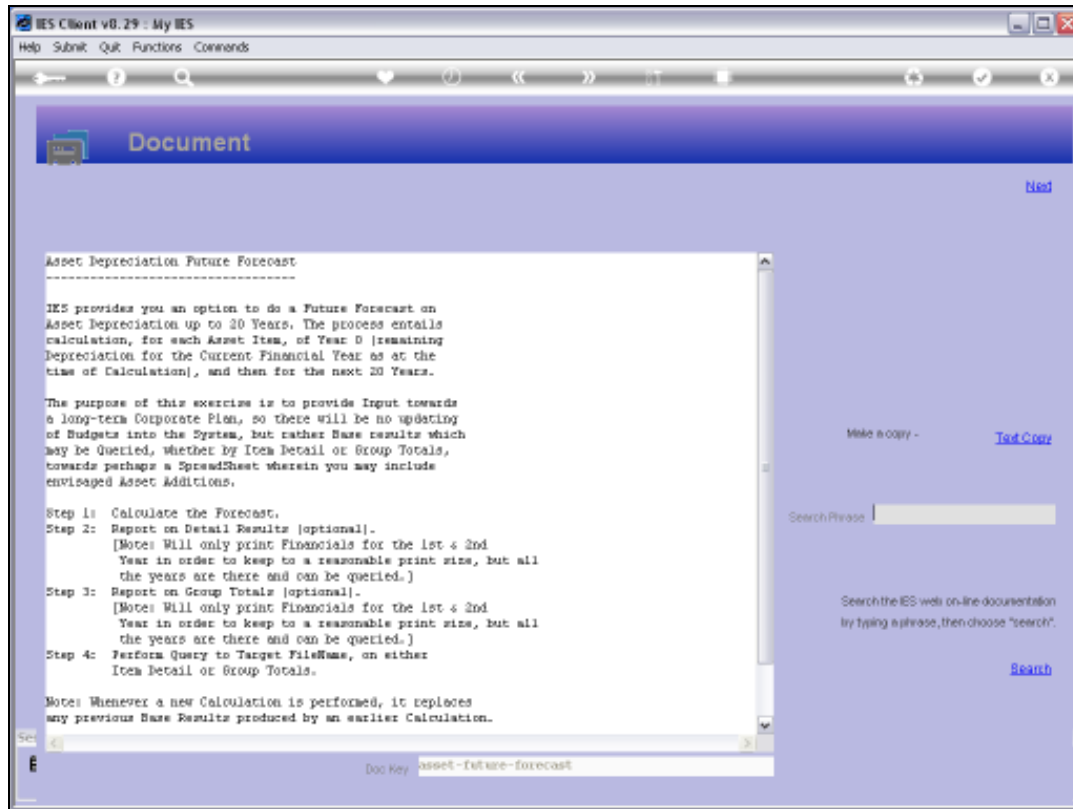




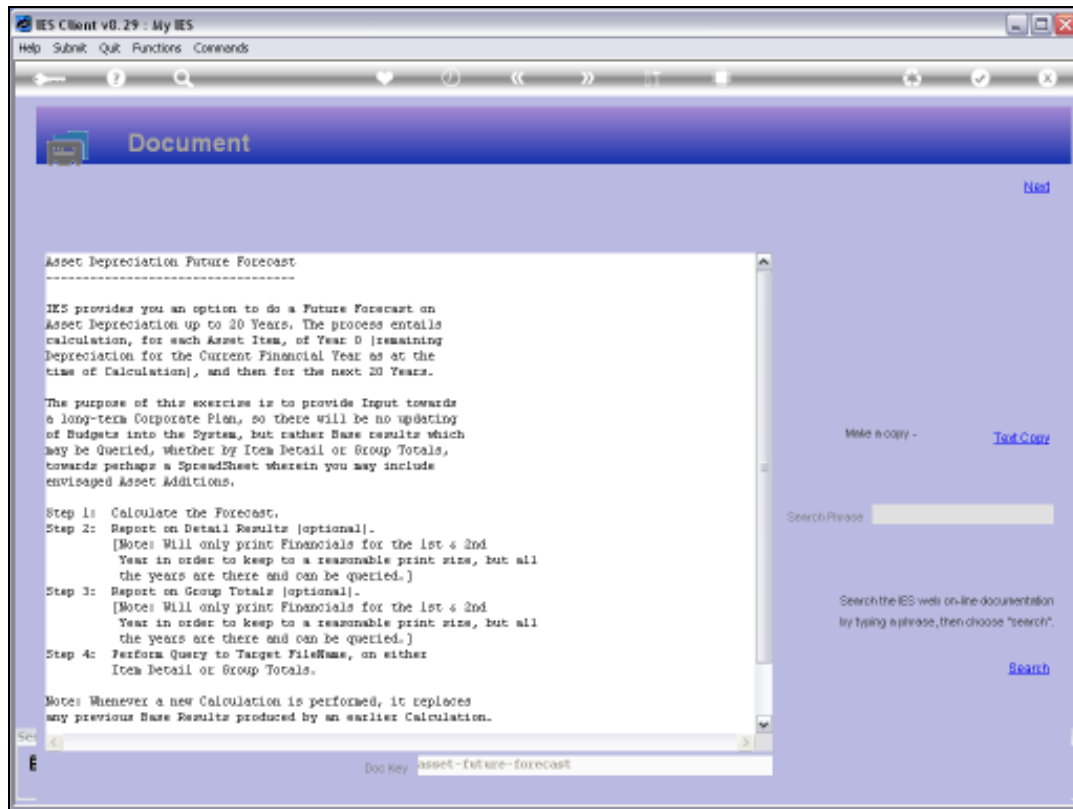
Slide 1

Slide notes: Future Forecasts for Assets are used when we do Corporate Plans for up to 20 Years, as in this case the forecast Asset Depreciation provides a useful and necessary input.



Slide 2

Slide notes: The Help document explains the Future Forecast. In a nutshell, it produces forecast Asset Depreciation numbers for the next 20 Years.



The screenshot shows a web browser window titled "IES Client v8.29 : My IES". The browser address bar is empty. The page content is titled "Document" and contains the following text:

Asset Depreciation Future Forecast

IES provides you an option to do a Future Forecast on Asset Depreciation up to 20 Years. The process entails calculation, for each Asset Item, of Year 0 (remaining Depreciation for the Current Financial Year as at the time of Calculation), and then for the next 20 Years.

The purpose of this exercise is to provide Input towards a long-term Corporate Plan, so there will be no updating of Budgets into the System, but rather Base results which may be Queried, whether by Item Detail or Group Totals, towards perhaps a Spreadsheet wherein you may include envisaged Asset Additions.

Step 1: Calculate the Forecast.
Step 2: Report on Detail Results [optional].
[Note: Will only print Financials for the 1st & 2nd Year in order to keep to a reasonable print size, but all the years are there and can be queried.]
Step 3: Report on Group Totals [optional].
[Note: Will only print Financials for the 1st & 2nd Year in order to keep to a reasonable print size, but all the years are there and can be queried.]
Step 4: Perform Query to Target FileName, on either Item Detail or Group Totals.

Notes: Whenever a new Calculation is performed, it replaces any previous Base Results produced by an earlier Calculation.

At the bottom of the document area, there is a search bar with the text "Doc Key: asset-future-forecast".

On the right side of the page, there are several interactive elements: a "Next" link, a "Make a copy -" link, a "Text Copy" link, a "Search Please" input field, and a "Search" link. Below the search bar, there is a note: "Search the IES web on-line documentation by typing a phrase, then choose 'Search'."

Slide 3
Slide notes: