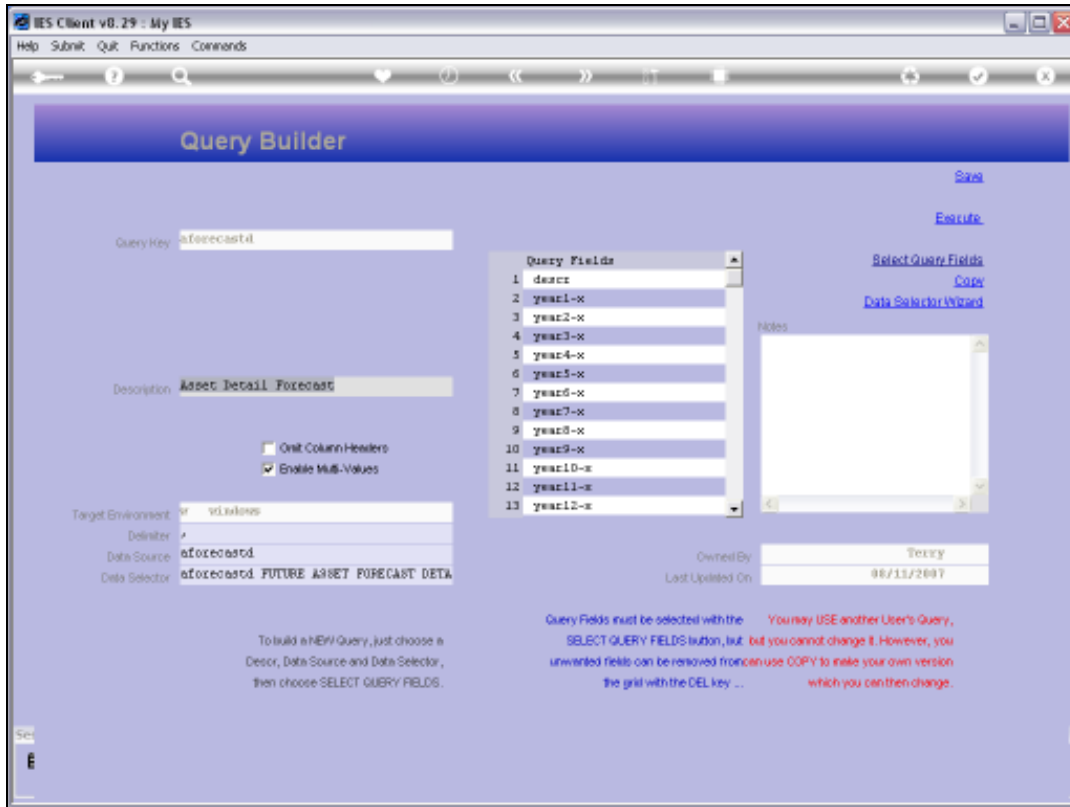




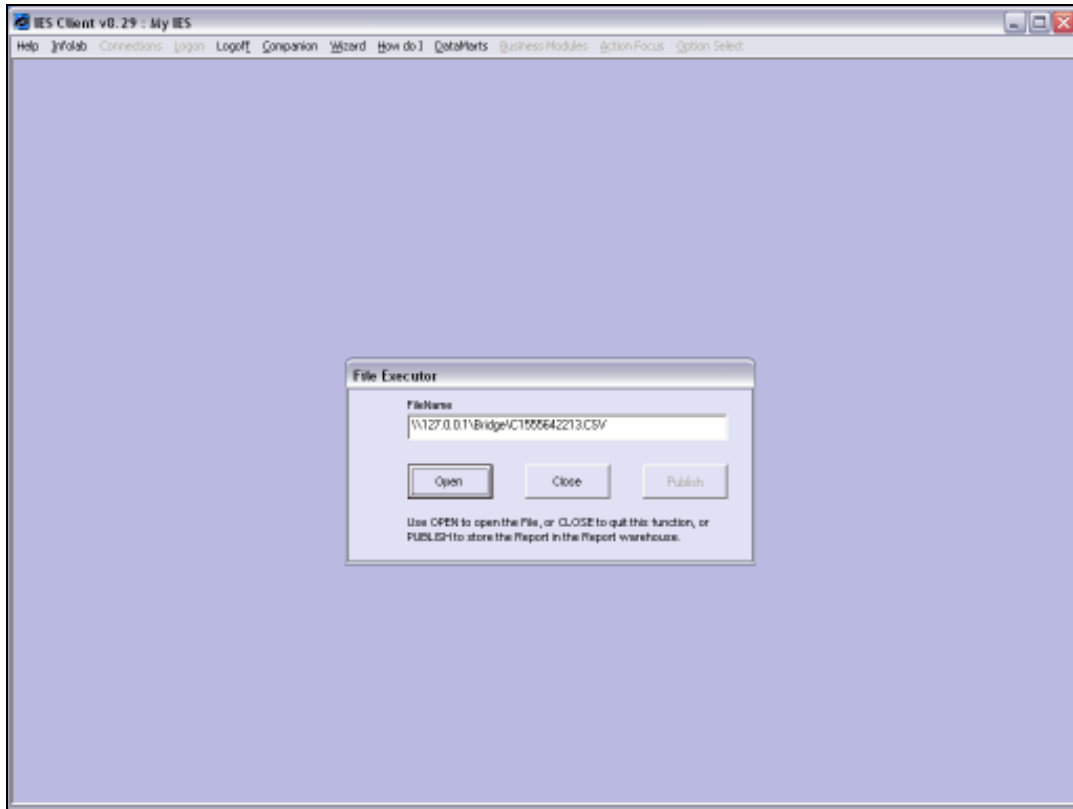
Slide 1

Slide notes: The Export option provides the full 20 Year results into a spreadsheet.

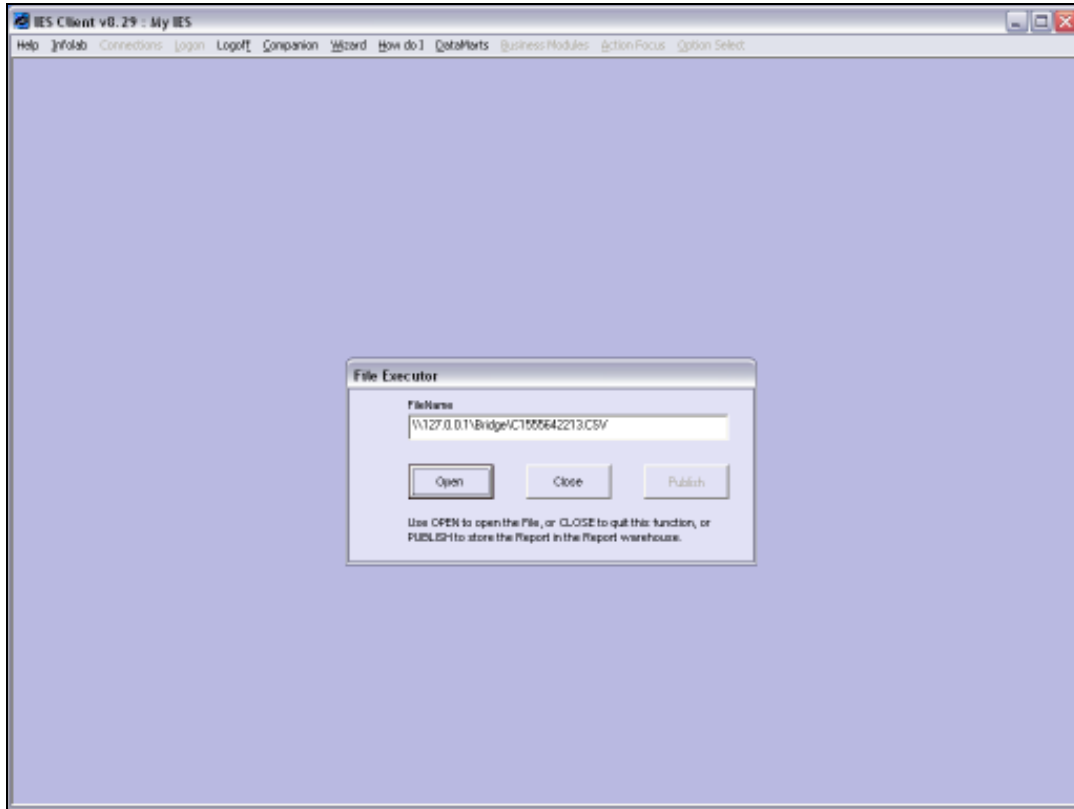




Slide 3  
Slide notes:



Slide 4  
Slide notes:



Slide 5  
Slide notes:

	Year 1	Year 2	Year 3	Year 4	Year 5	Year 6	Year 7	Year 8	Year 9	Year 10	Year 11	Year 12
1 Descr												
2 AC SPLIT PANASONIC CS 120KH 1.5 PK	832.56	832.56	70.70	0.00	0.00	0.00	0.00	0.00	0.00	0.00	0.00	0.00
3 AC SPLIT PANASONIC CS 120KH 1.5 PK	832.56	832.56	70.70	0.00	0.00	0.00	0.00	0.00	0.00	0.00	0.00	0.00
4 AC SPLIT PANASONIC CS 120KH 1.5 PK	865.80	865.80	73.75	0.00	0.00	0.00	0.00	0.00	0.00	0.00	0.00	0.00
5 AC SPLIT DAIKIN 1.5PK INVERTER	865.80	865.80	73.76	0.00	0.00	0.00	0.00	0.00	0.00	0.00	0.00	0.00
6 AC SPLIT DAIKIN 1.5PK INVERTER	799.20	799.20	68.00	0.00	0.00	0.00	0.00	0.00	0.00	0.00	0.00	0.00
7 AC SPLIT DAIKIN 1.5PK INVERTER	799.20	799.20	68.00	0.00	0.00	0.00	0.00	0.00	0.00	0.00	0.00	0.00
8 AIR CONDITIONER, LG	799.20	799.20	77.80	0.00	0.00	0.00	0.00	0.00	0.00	0.00	0.00	0.00
9 AIR CONDITIONER, LG	799.20	799.20	68.00	0.00	0.00	0.00	0.00	0.00	0.00	0.00	0.00	0.00
10 Acer 7800	2,164.56	2,164.56	426.84	0.00	0.00	0.00	0.00	0.00	0.00	0.00	0.00	0.00
11 Acer 7800	2,164.56	2,164.56	366.08	0.00	0.00	0.00	0.00	0.00	0.00	0.00	0.00	0.00
12 HP 5615	2,497.56	2,497.56	422.58	0.00	0.00	0.00	0.00	0.00	0.00	0.00	0.00	0.00
13 Apple iMac Z1	4,162.56	4,162.56	705.08	0.00	0.00	0.00	0.00	0.00	0.00	0.00	0.00	0.00
14 Apple iMac Z7	5,161.56	5,161.56	874.58	0.00	0.00	0.00	0.00	0.00	0.00	0.00	0.00	0.00
15 Apple MacBook Pro 13	4,162.56	4,162.56	705.08	0.00	0.00	0.00	0.00	0.00	0.00	0.00	0.00	0.00
16 Apple MacBook Pro 15	5,161.56	5,161.56	874.58	0.00	0.00	0.00	0.00	0.00	0.00	0.00	0.00	0.00
17 Apple MacBook Pro 17	8,491.56	8,491.56	1,439.58	0.00	0.00	0.00	0.00	0.00	0.00	0.00	0.00	0.00
18 Apple MacBook Pro 15	5,161.56	5,161.56	874.58	0.00	0.00	0.00	0.00	0.00	0.00	0.00	0.00	0.00
19 Apple iMac Z1	4,162.56	4,162.56	705.08	0.00	0.00	0.00	0.00	0.00	0.00	0.00	0.00	0.00
20 Apple iMac Z1	4,162.56	4,162.56	705.08	0.00	0.00	0.00	0.00	0.00	0.00	0.00	0.00	0.00
21 TOYOTA COROLLA I.B	4,673.16	4,673.16	4,673.16	4,673.16	4,673.16	4,673.16	4,673.16	4,673.16	4,673.16	4,673.16	4,673.16	4,673.16
22 KIA PICANTO	3,511.20	3,511.20	3,511.20	3,511.20	3,511.20	3,511.20	3,511.20	3,511.20	3,511.20	3,511.20	3,511.20	3,511.20
23												
24												
25												
26												
27												
28												
29												

Slide 6

Slide notes: And the spreadsheet has all the results of the Forecast for 20 Years.