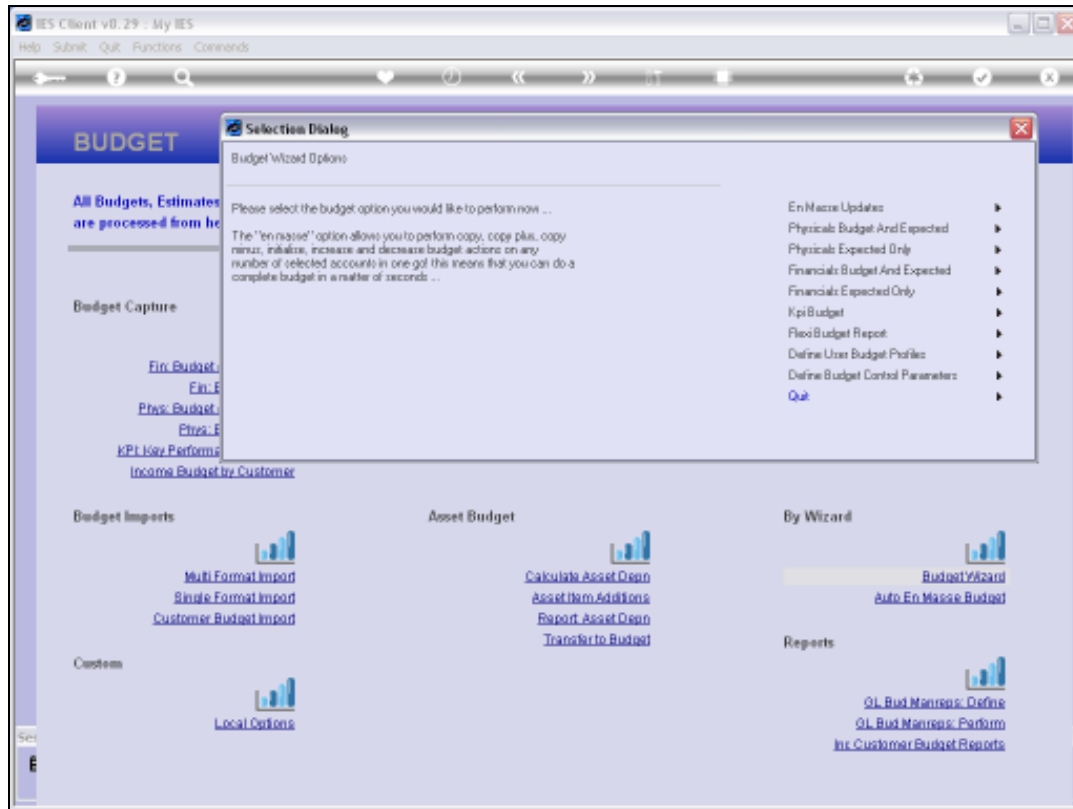




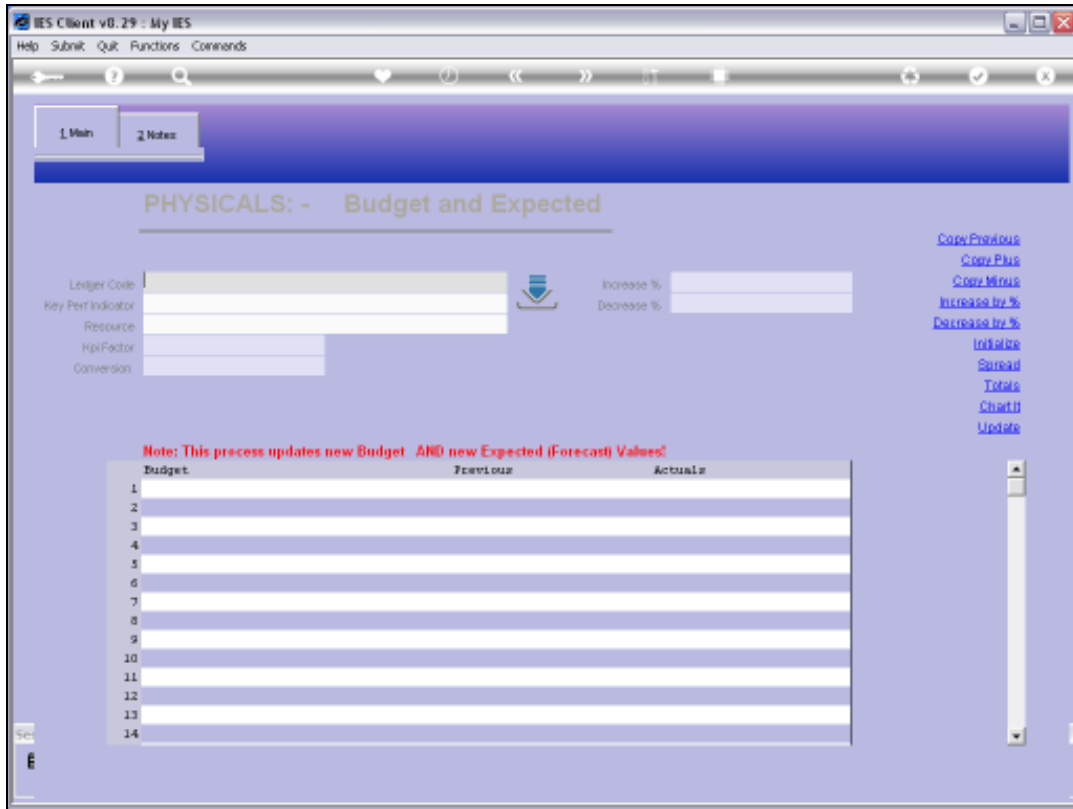
Slide 1

Slide notes: The Budget Wizard includes many of the options found on the main Budget console.



Slide 2

Slide notes: Every option listed here is also found on the main Budget menu screen, so why have the wizard? The benefit of the wizard is that it is a Menu Option in it's own right, and as such can be on our Companion Favorites and therefore available at all times from anywhere in the system, if we wish, without having to navigate to the Budget Menu. Any option selected and executed here is the same as if selected from the main Budget menu.



Slide 3
Slide notes:

The screenshot shows the IES Client v8.29 interface. At the top, there are menu options: Help, Submit, Quit, Functions, Comments. Below the menu is a toolbar with navigation icons. The main content area is titled "PHYSICALS: - Budget and Expected".

On the left side, there are input fields for:

- Ledger Code
- Key Perf Indicator
- Resource
- Kpi Factor: 0.00
- Conversion: 0.00

On the right side, there are percentage input fields:

- Increase %: 0.00
- Decrease %: 0.00

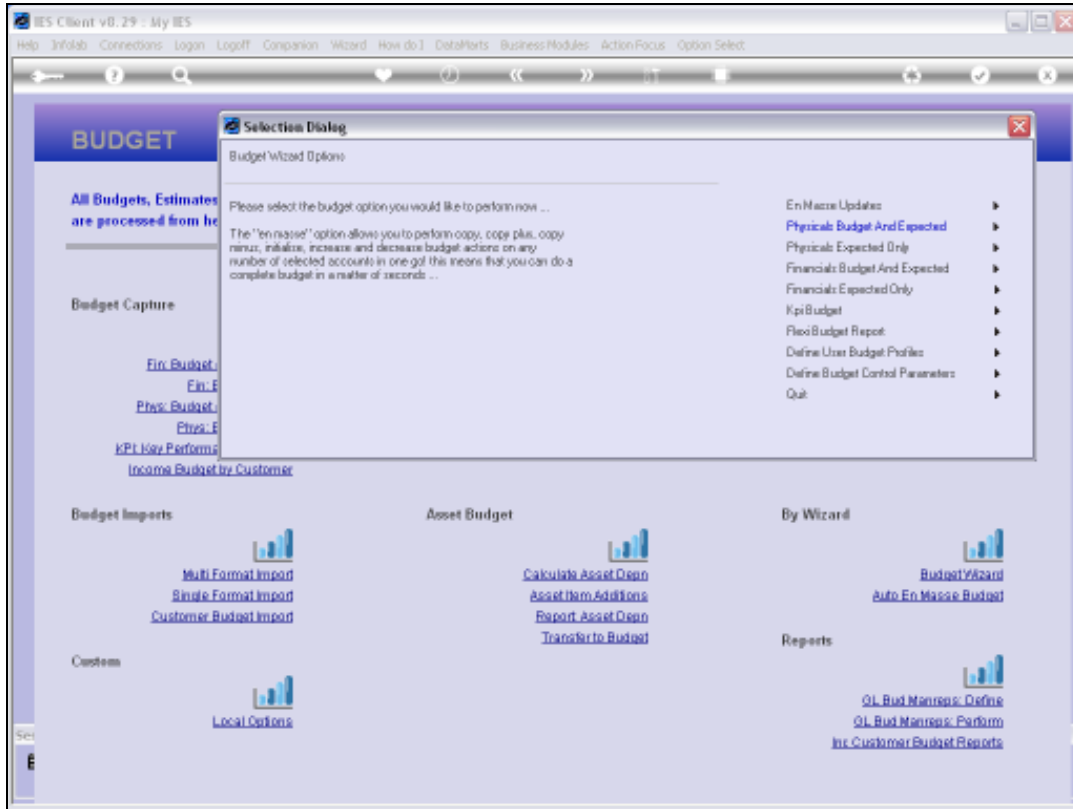
Further right, there are several action links: Copy Previous, Copy Plus, Copy Minus, Increase by %, Decrease by %, Initiate, Spread, Totals, Chart, Update.

A red note states: "Note: This process updates new Budget AND new Expected (Forecast) Values!"

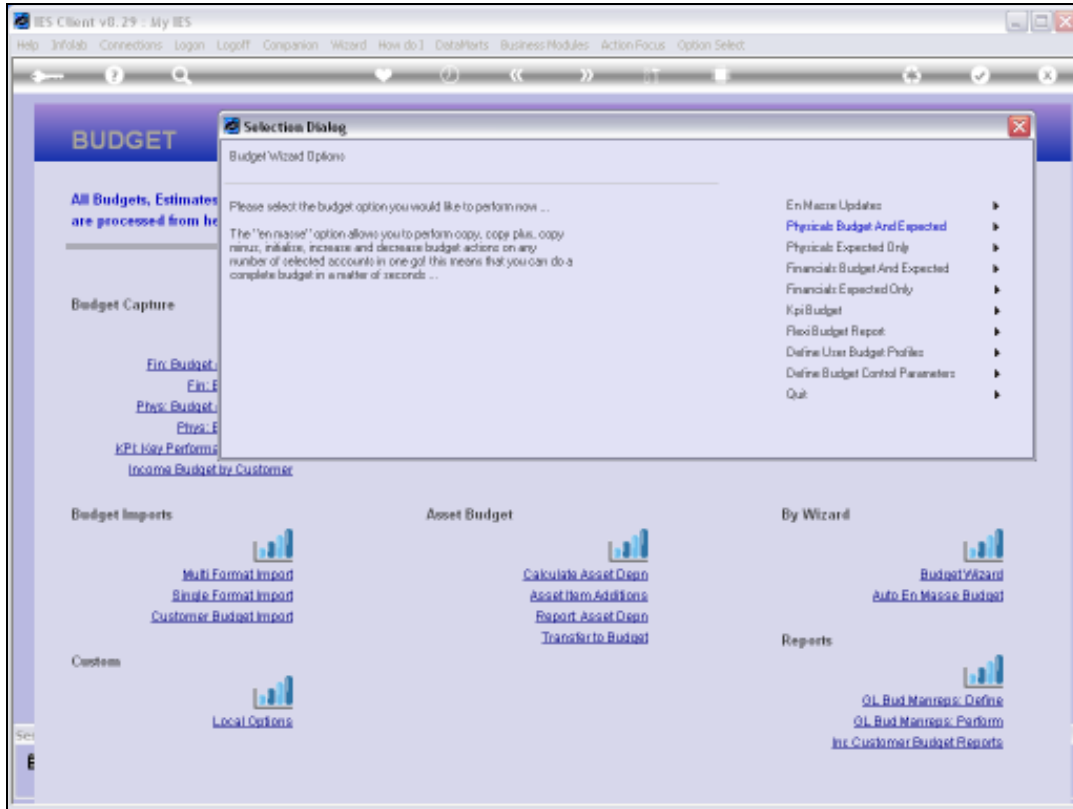
Below the note is a table with the following data:

	Budget		Previous	Actuals	
1	0.00	Jan 2010	0.00	0.00	
2	0.00	Feb 2010	0.00	0.00	
3	0.00	Mar 2010	0.00	0.00	
4	0.00	Apr 2010	0.00	0.00	
5	0.00	May 2010	0.00	0.00	
6	0.00	Jun 2010	0.00	0.00	
7	0.00	Jul 2010	0.00	0.00	
8	0.00	Aug 2010	0.00	0.00	
9	0.00	Sep 2010	0.00	0.00	
10	0.00	Oct 2010	0.00	0.00	
11	0.00	Nov 2010	0.00	0.00	
12	0.00	Dec 2010	0.00	0.00	

Slide 4
Slide notes:



Slide 5
Slide notes:



Slide 6
Slide notes:



Slide 7
Slide notes: