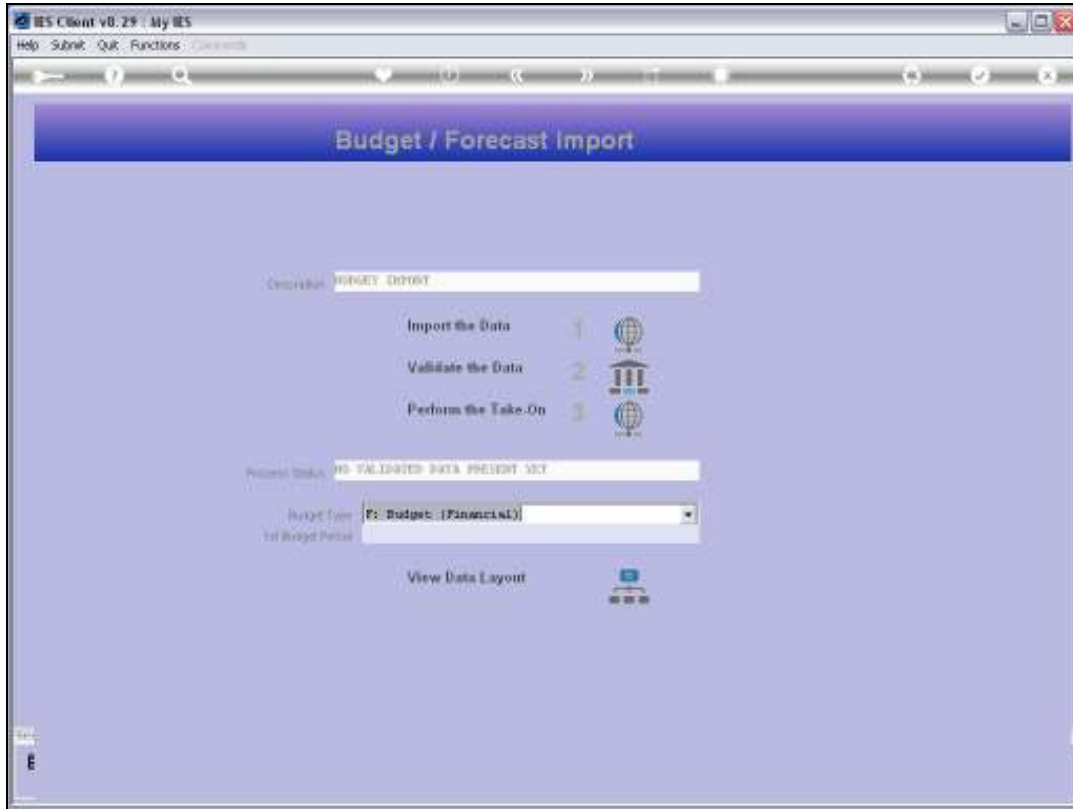


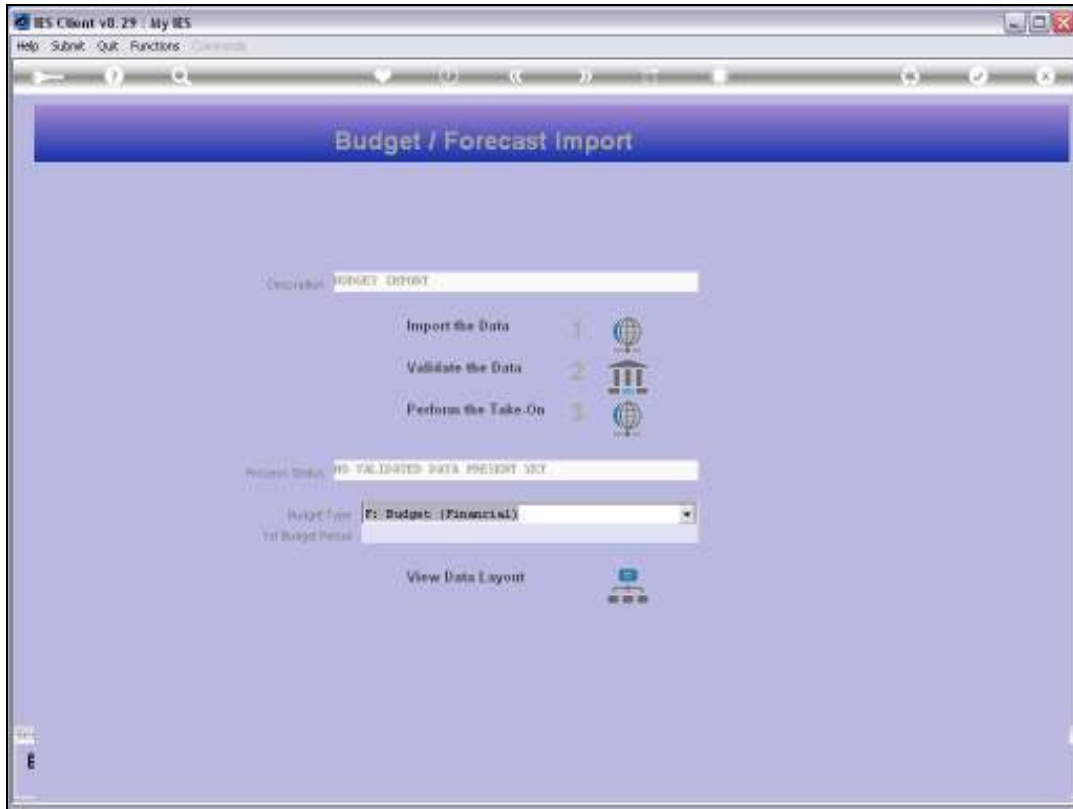


Slide 1

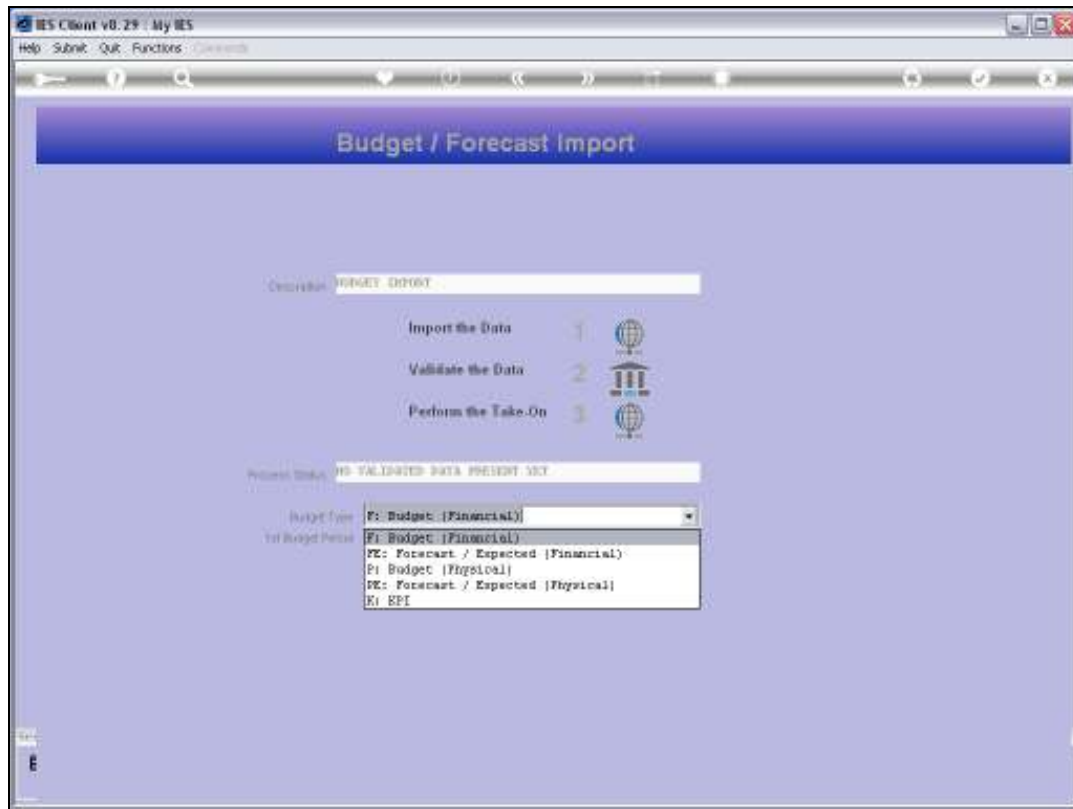
Slide notes: Revised Budgets, or part thereof, may be performed with the Import Options.



Slide 2  
Slide notes:



Slide 3  
Slide notes:



Slide 4

Slide notes: In this case, we use the FE and PE options for Financial Revised and Physical Revised, respectively.



Slide 5  
Slide notes:



Slide 6  
Slide notes:



Slide 7  
Slide notes:

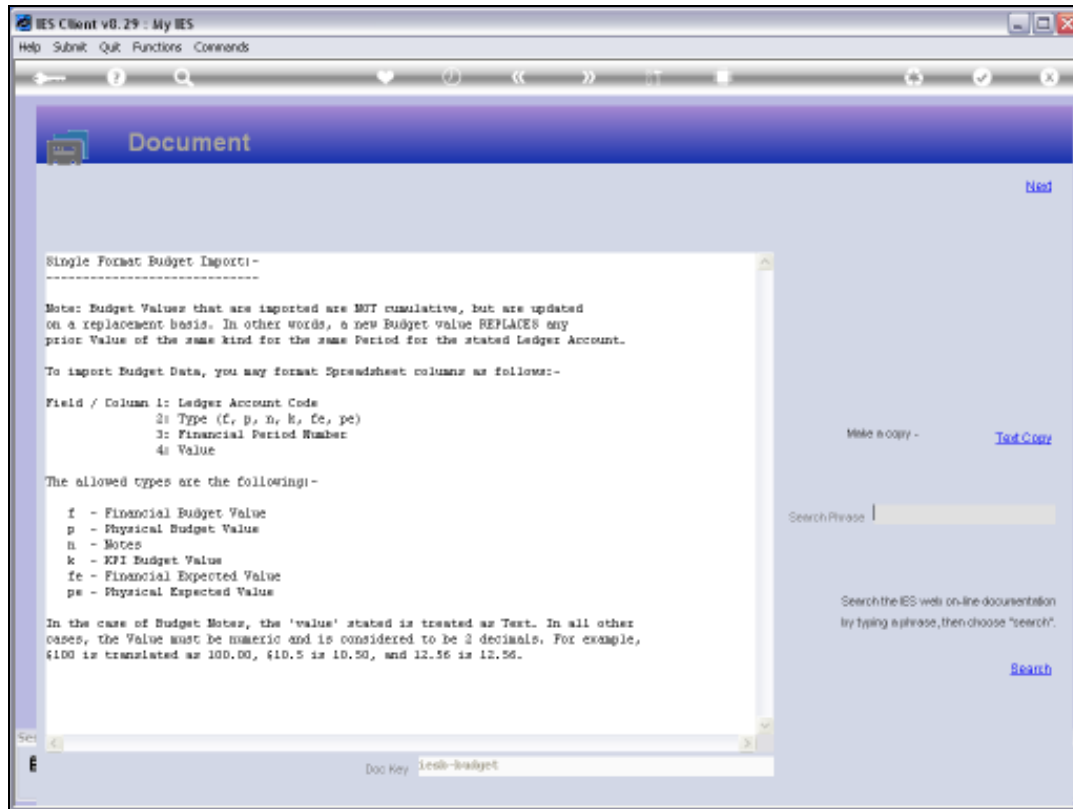


Slide 8  
Slide notes:



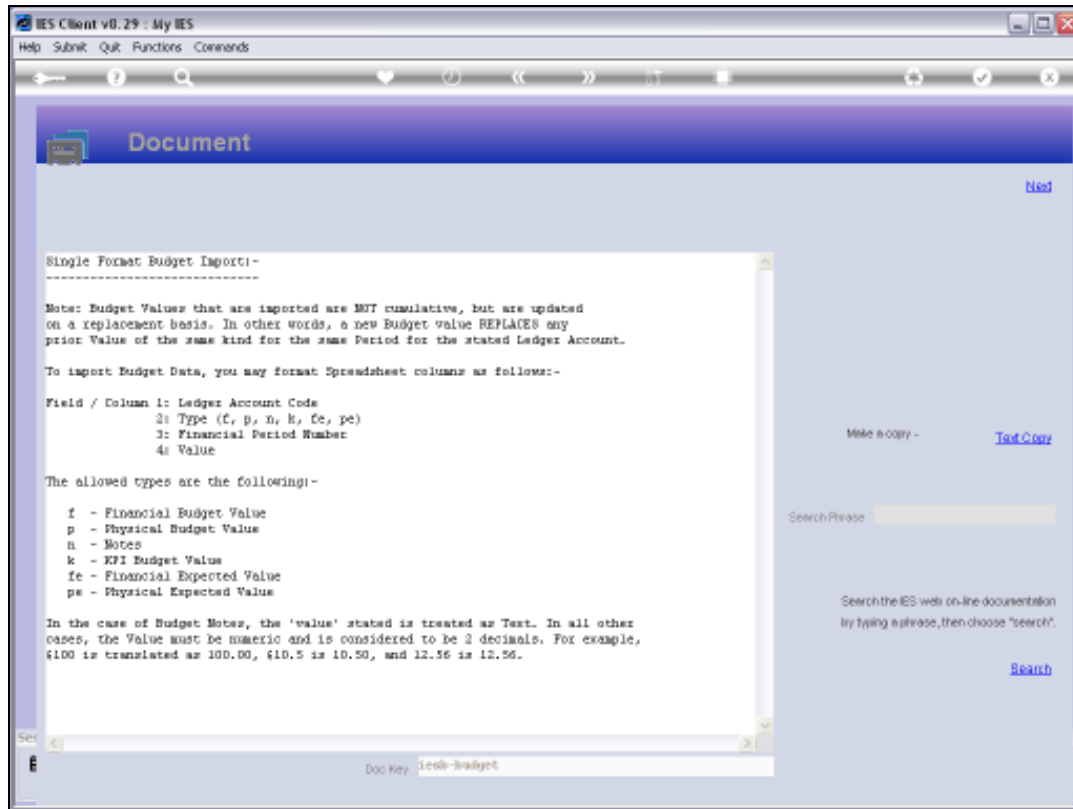


Slide 9  
Slide notes:



## Slide 10

Slide notes: In the case of the Single Import Format, we also have the FE and PE options available. So importing of Revised Budgets are the same as for New Budgets, except that we just state the appropriate Revised Budget options when importing.



IES Client v8.29 : My IES  
Help Submit Quit Functions Commands

Document

Single Format Budget Import:-

Note: Budget Values that are imported are NOT cumulative, but are updated on a replacement basis. In other words, a new Budget value REPLACES any prior Value of the same kind for the same Period for the stated Ledger Account.

To import Budget Data, you may format Spreadsheet columns as follows:-

Field / Column 1: Ledger Account Code  
2: Type (C, P, N, E, EC, PE)  
3: Financial Period Number  
4: Value

The allowed types are the following:-

- f - Financial Budget Value
- p - Physical Budget Value
- n - Notes
- k - KPI Budget Value
- fe - Financial Expected Value
- pe - Physical Expected Value

In the case of Budget Notes, the 'value' stated is treated as Text. In all other cases, the Value must be numeric and is considered to be 2 decimals. For example, \$100 is translated as 100.00, \$10.5 is 10.50, and 12.56 is 12.56.

Make a copy - [Text Copy](#)

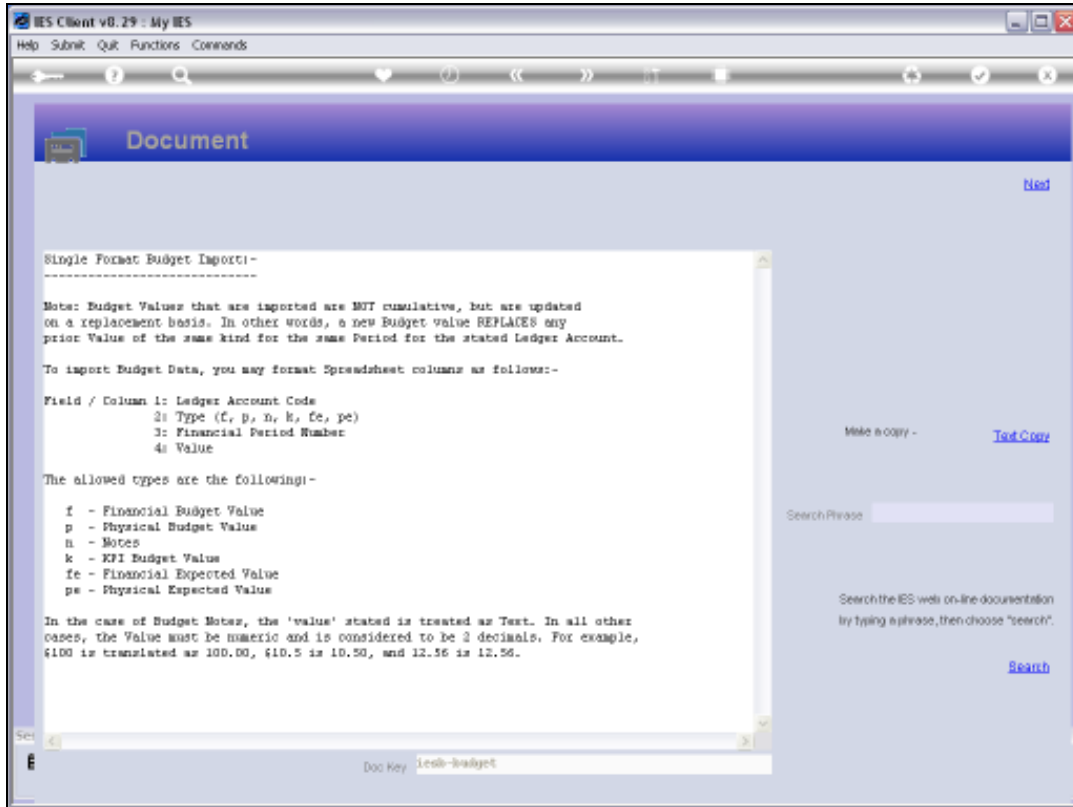
Search Phrase

Search the IES web on-line documentation by typing a phrase, then choose "search".

[Search](#)

Doc Key: `ies8-budget`

Slide 11  
Slide notes:



Slide 12  
Slide notes:



Slide 13

Slide notes:



Slide 14

Slide notes:



Slide 15  
Slide notes:



Slide 16  
Slide notes: