



Slide 1

Slide notes: There are times when we want to lock the Budgets against further updates or change by Users. Rather than having to remove all User Access to the Capture Options, we can just use the Budget Locks until we want to allow general capture by Users again.



Slide 2

Slide notes: There are 3 Capture options that are affected by the New Budget Lock, and they are 'Financial Budget and Expected', 'Physical Budget and Expected' and the 'KPI Budget'.



Slide 3
Slide notes:



Slide 4
Slide notes:



Slide 5

Slide notes: And there are 2 options affected by the Revised Budget Lock, and they are 'Financial Expected Only' and 'Physical Expected Only'.



Slide 6
Slide notes:

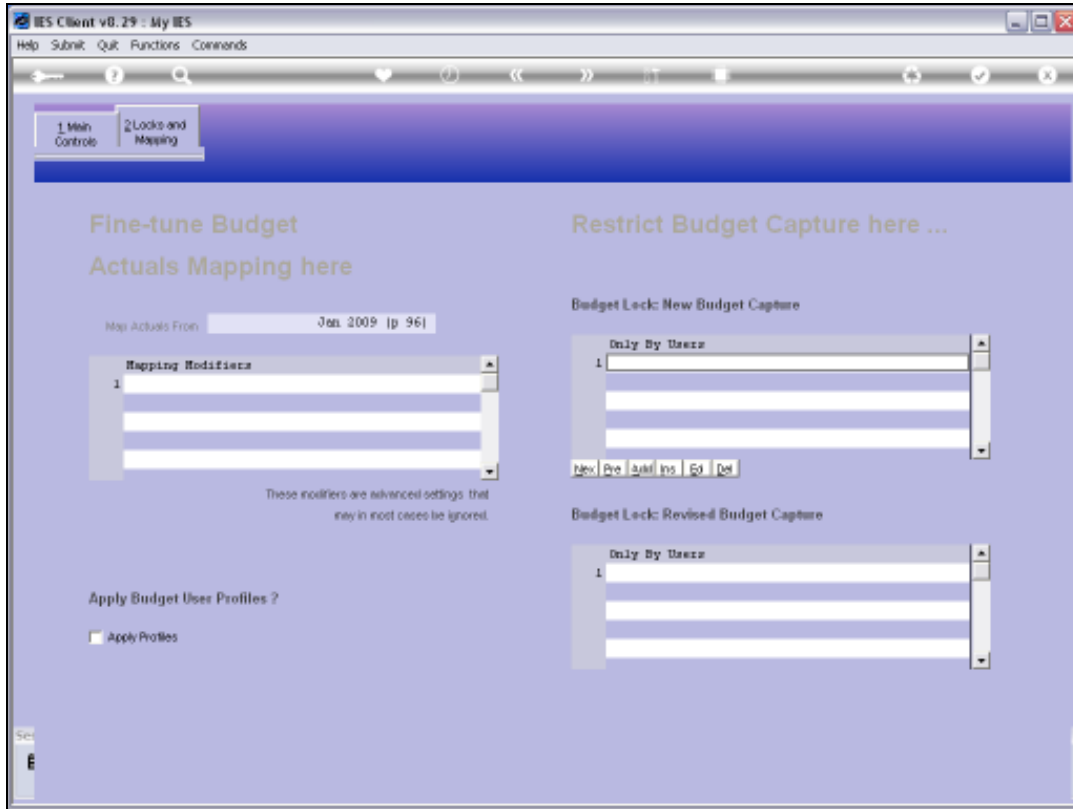


Slide 7

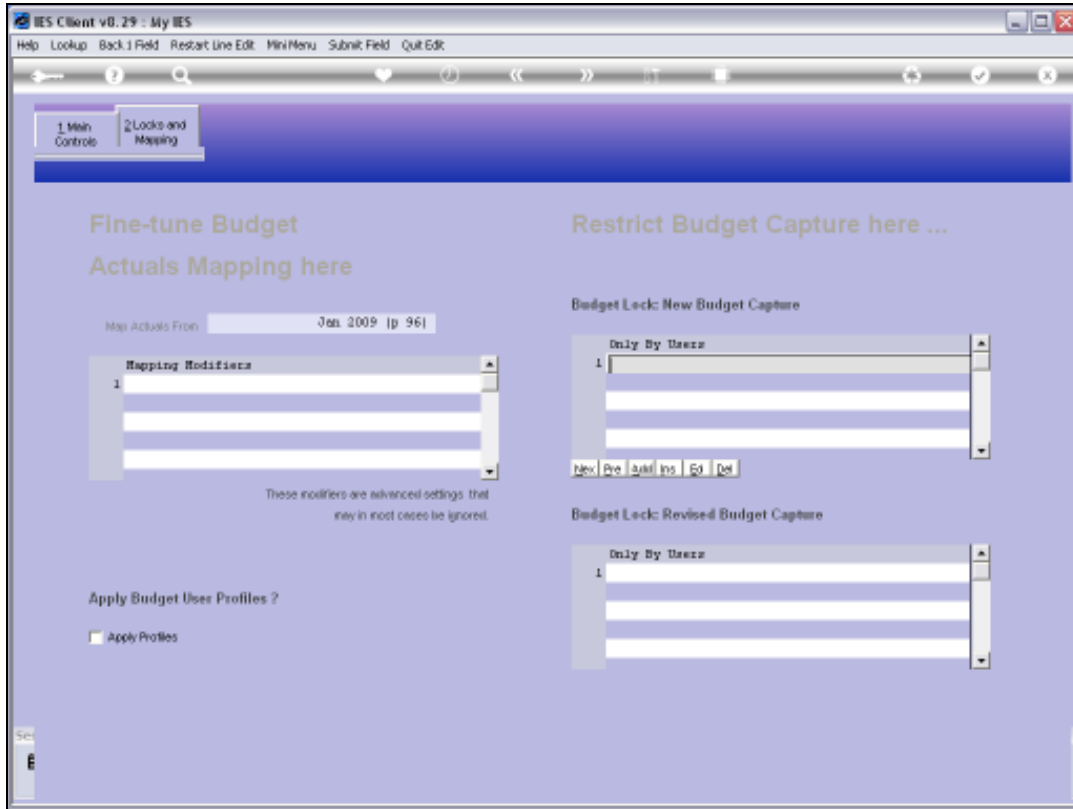
Slide notes: The Locks are set or released at the Control Parameters.



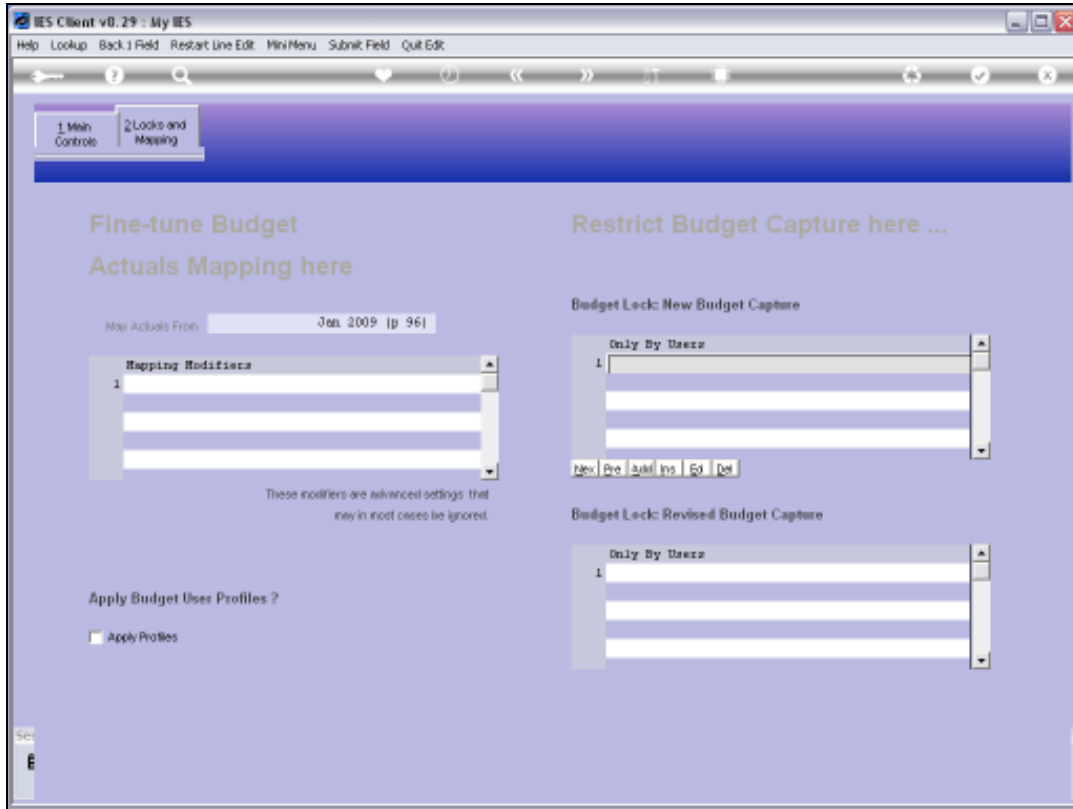
Slide 8
Slide notes:



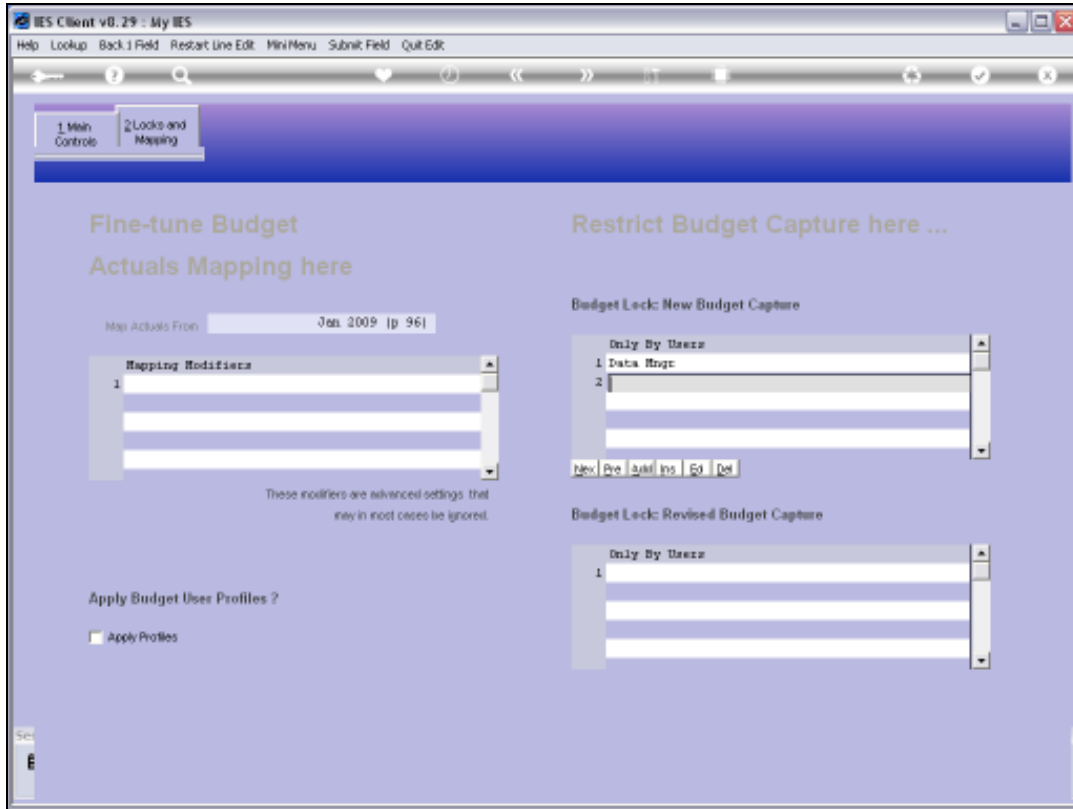
Slide 9
Slide notes:



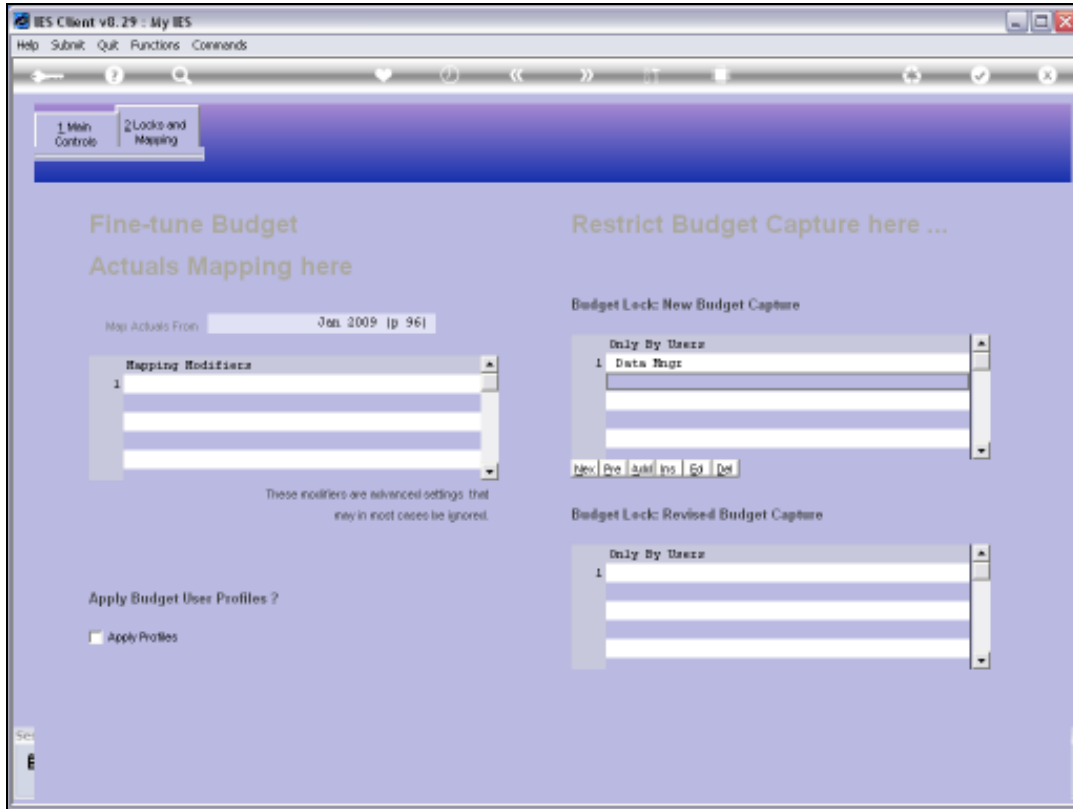
Slide 10
Slide notes:



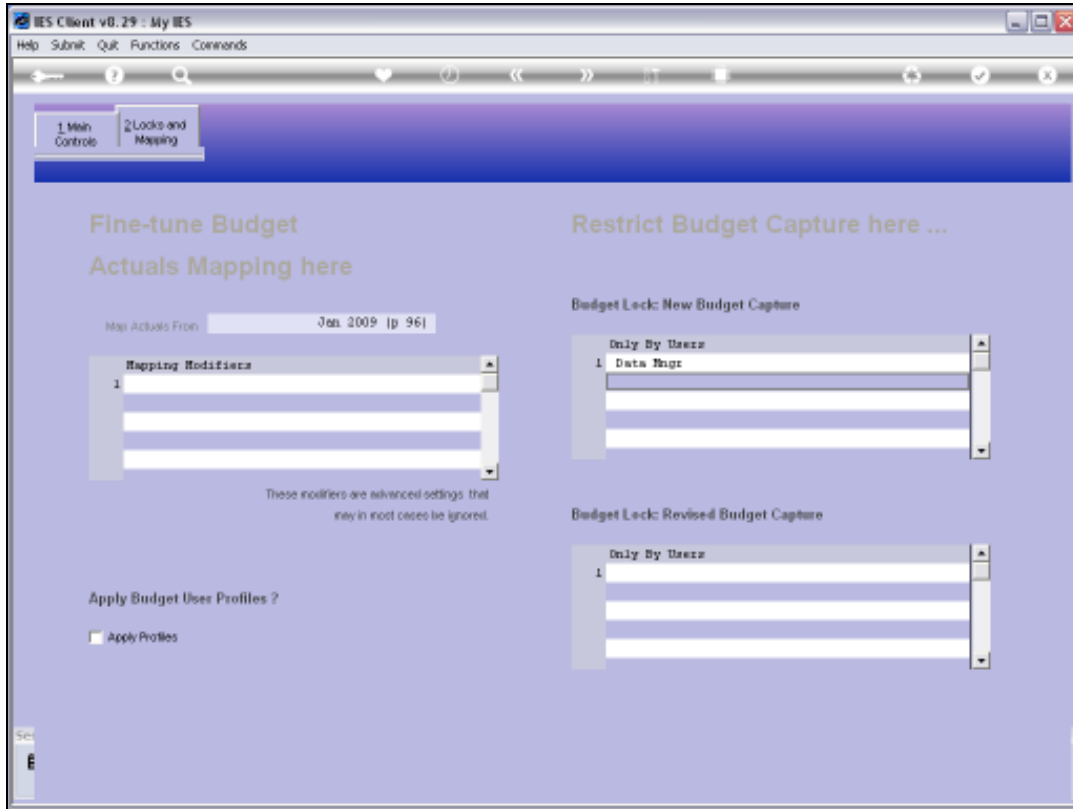
Slide 11
Slide notes:



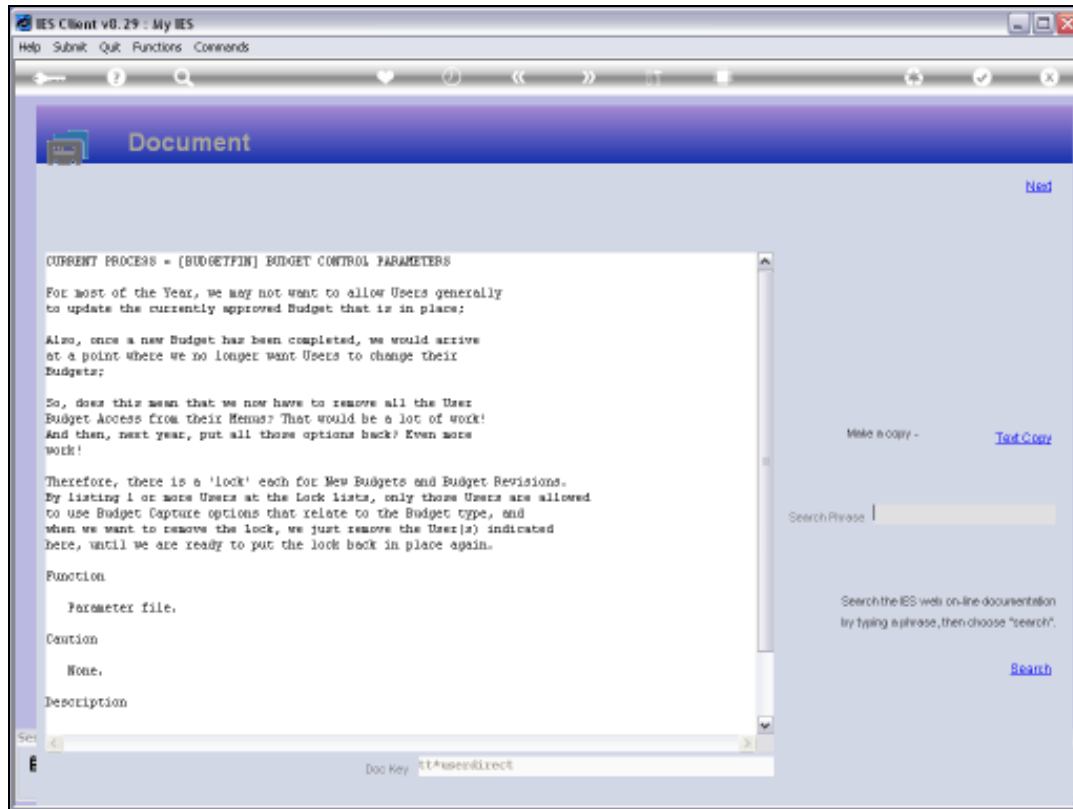
Slide 12
Slide notes:



Slide 13
Slide notes:

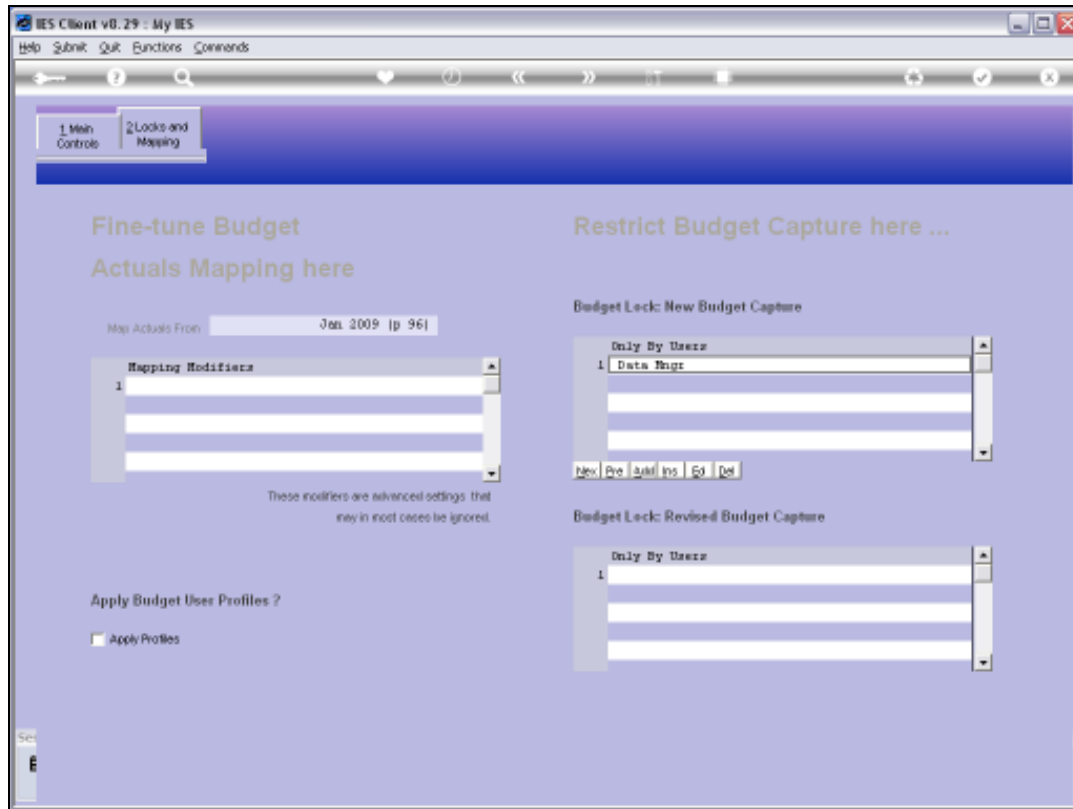


Slide 14
Slide notes:



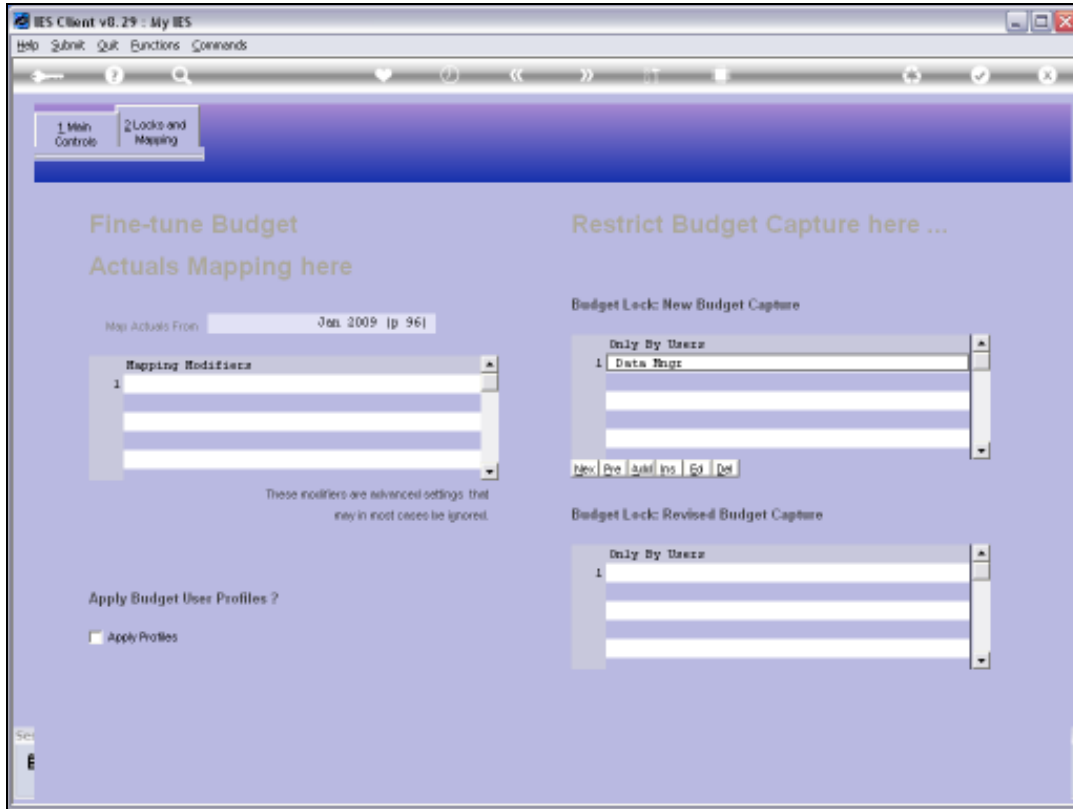
Slide 15

Slide notes: Here we have a full explanation on the Locks.

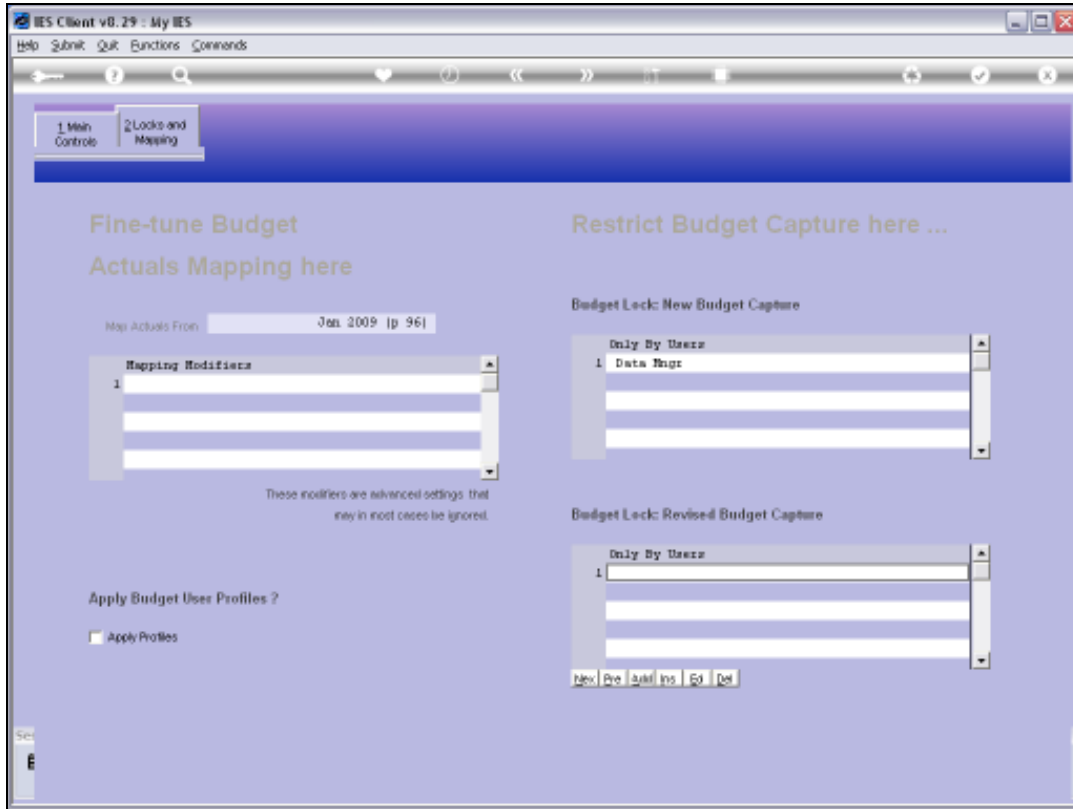


Slide 16

Slide notes: While there are 1 or more Users listed at a Lock, then no-one else than those Users may use the related Capture options.



Slide 17
Slide notes:



Slide 18

Slide notes: To release a Lock we just remove the Users listed at the Lock.



Slide 19
Slide notes:



Slide 20
Slide notes: