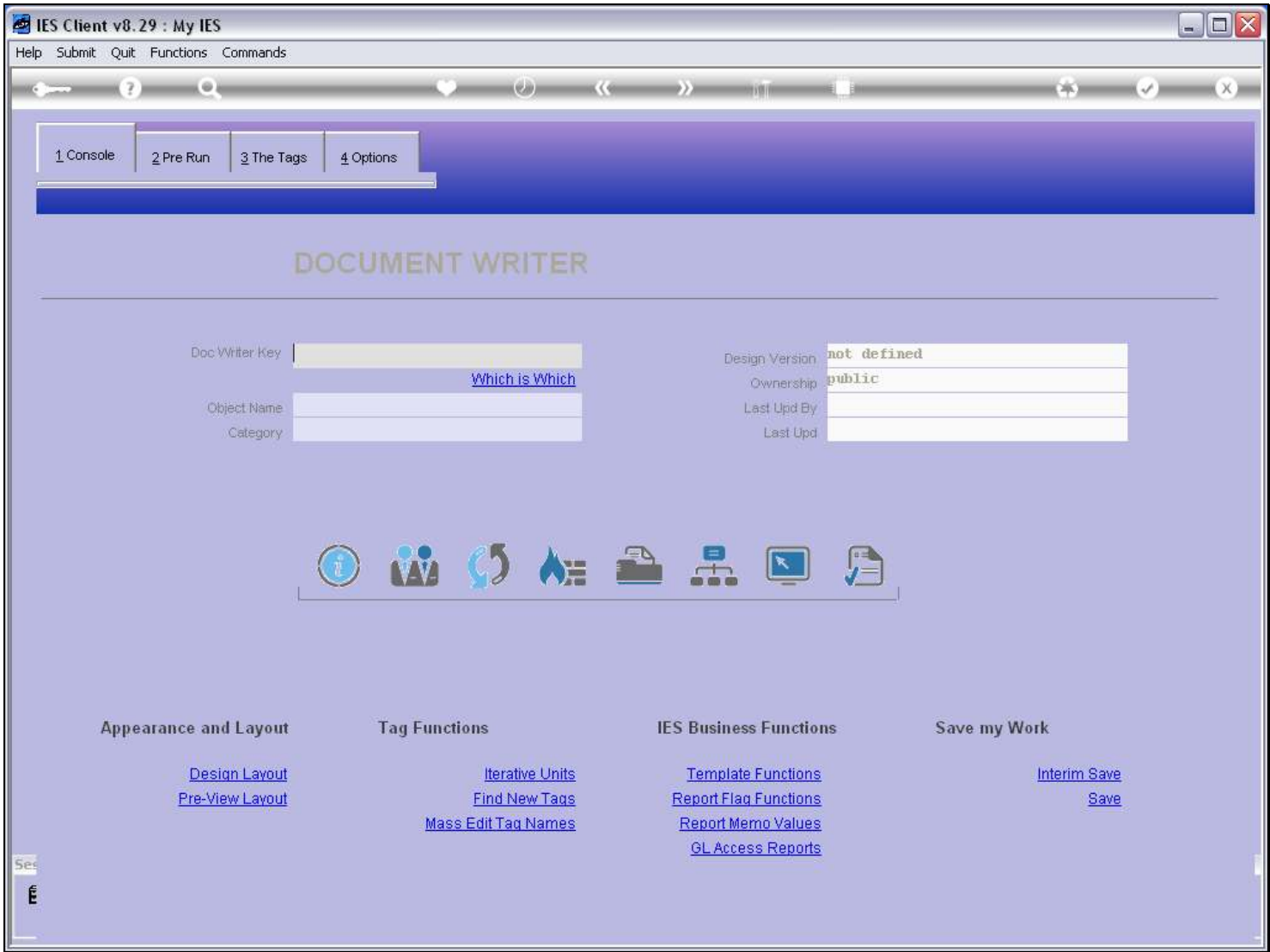


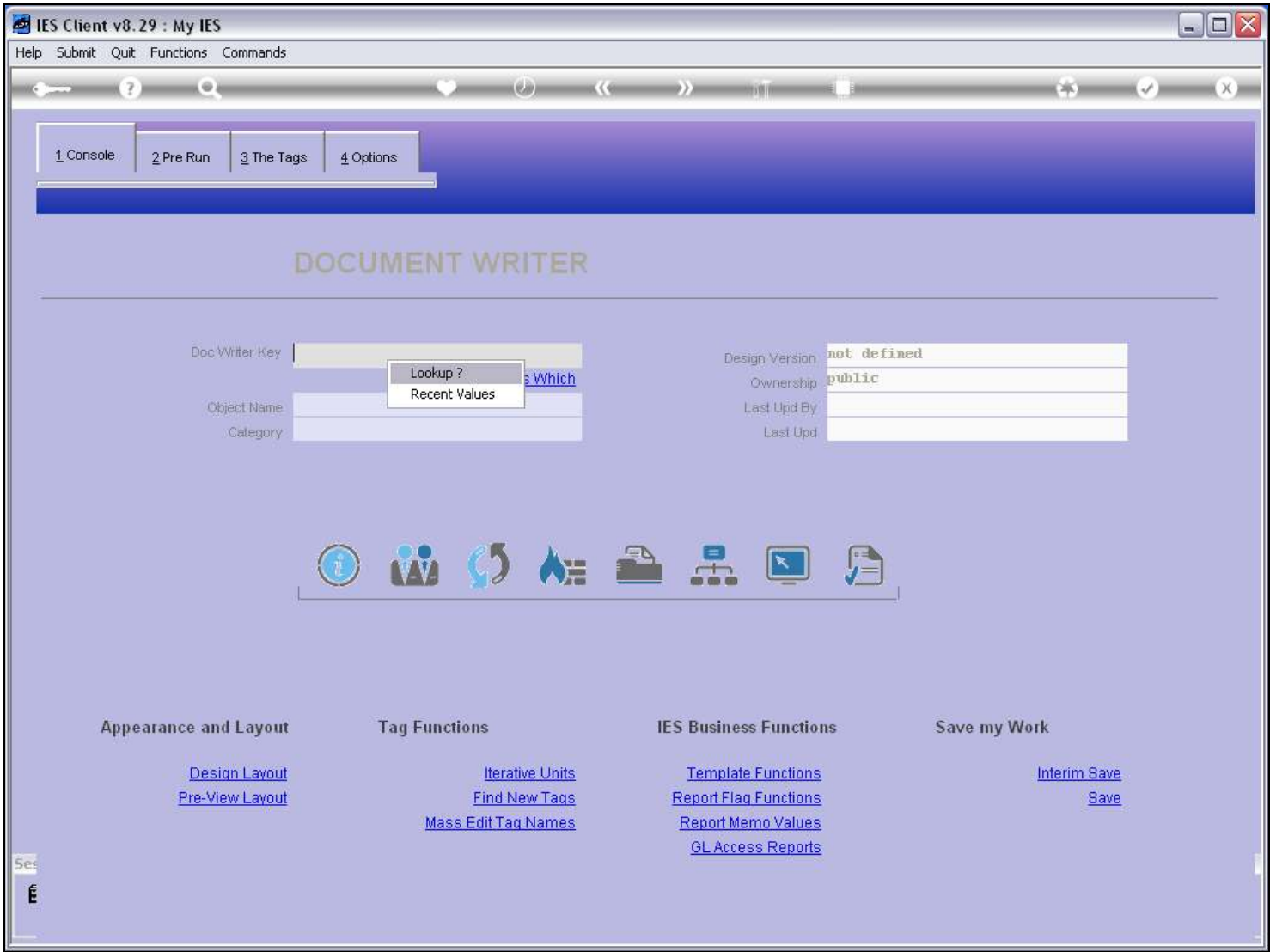
Slide 1 - Slide 1



Slide notes

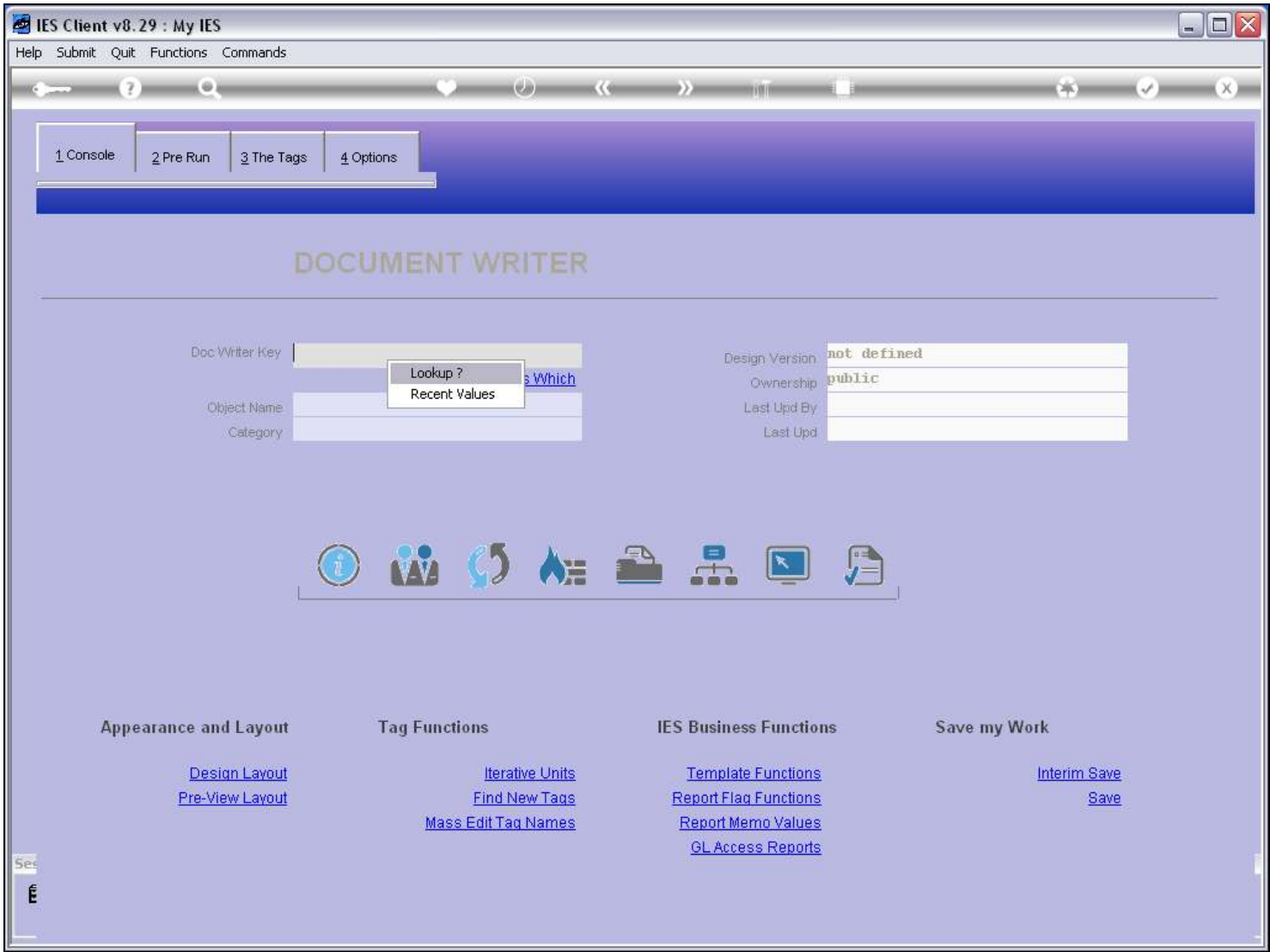
A number of DocWriter Reports are a standard part of the IES system, and in addition, we can do any number of DocWriter Reports locally.

Slide 2 - Slide 2



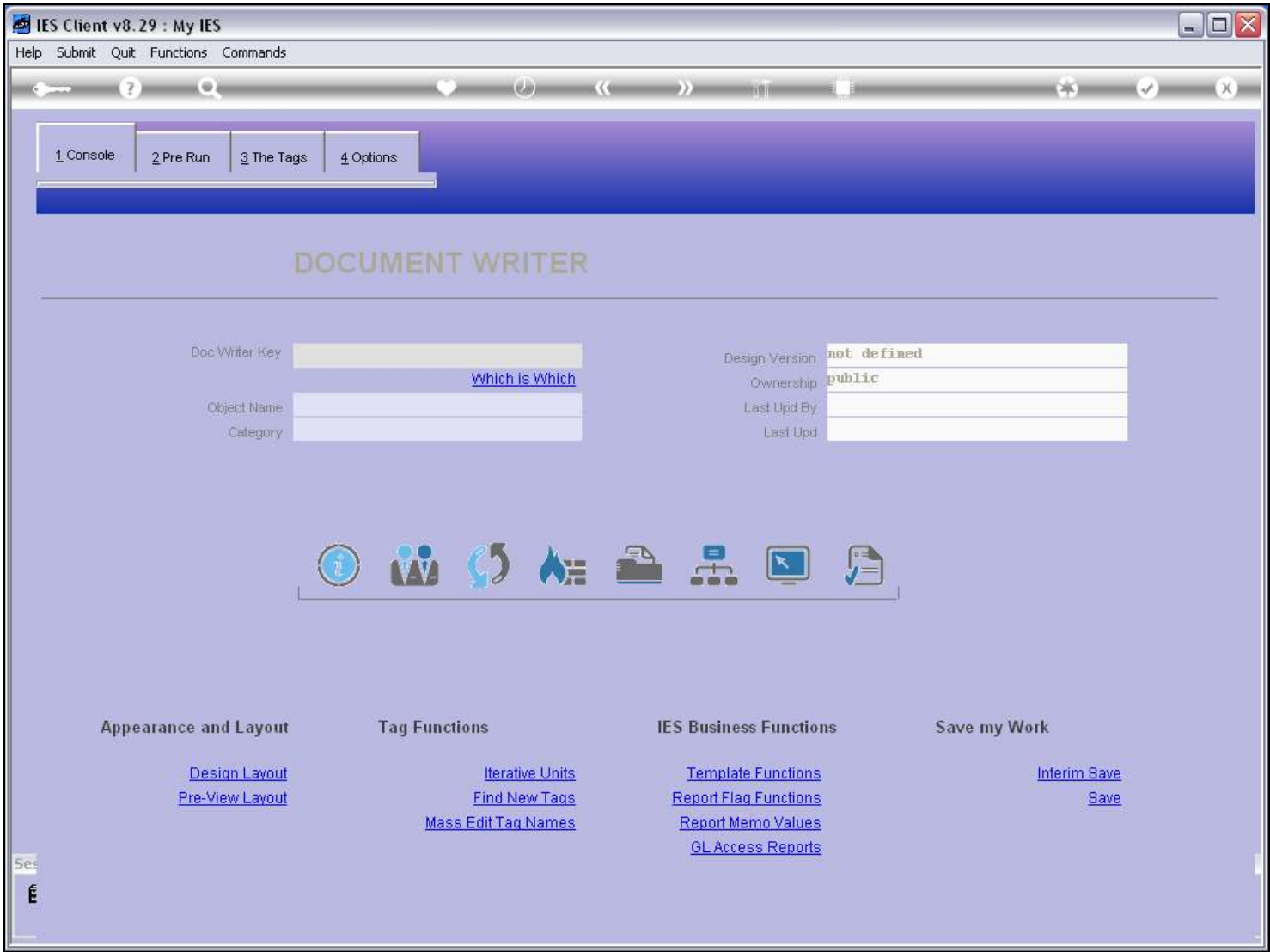
Slide notes

Slide 3 - Slide 3



Slide notes

Slide 4 - Slide 4

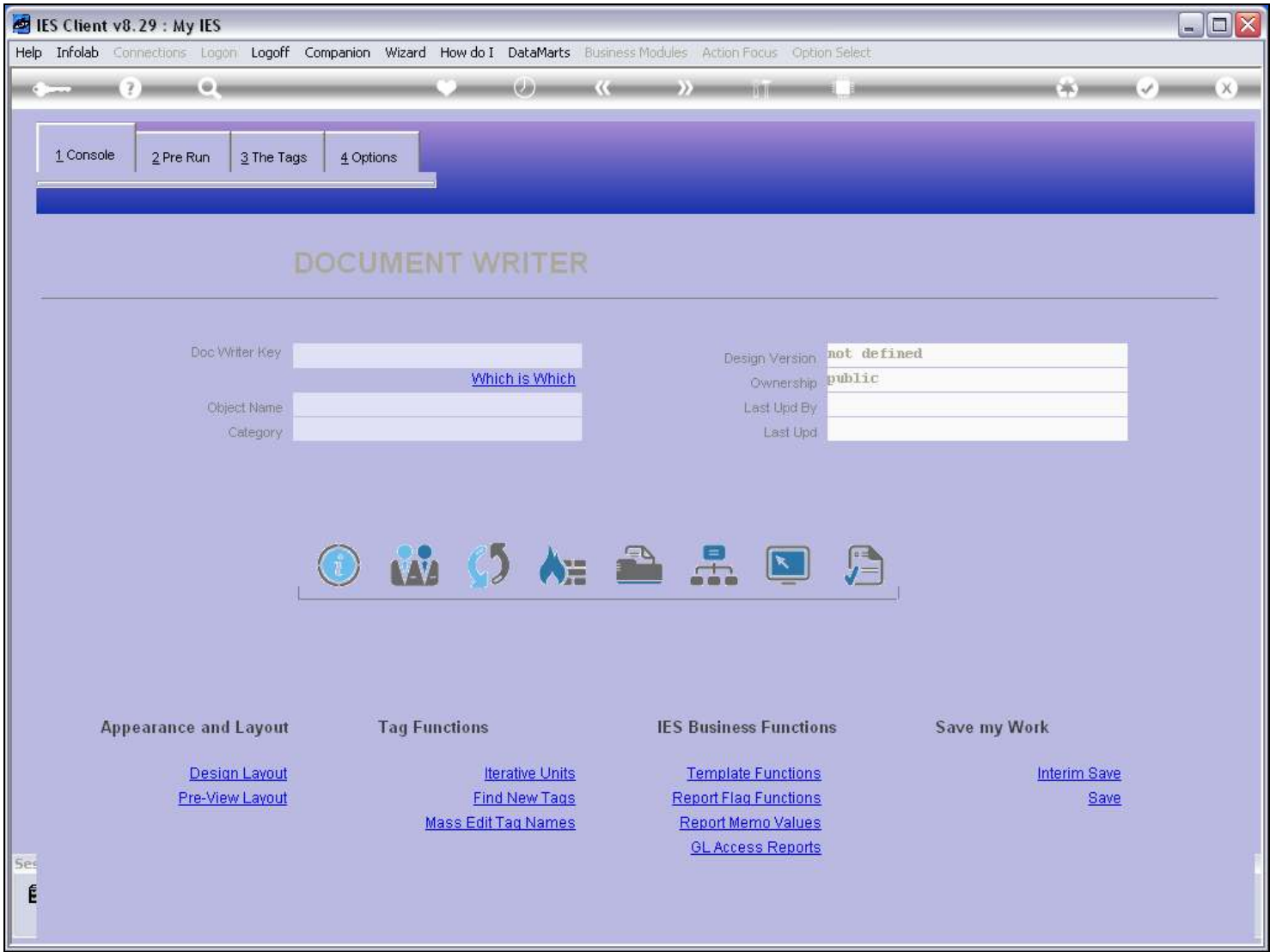


Slide notes

[illegible]

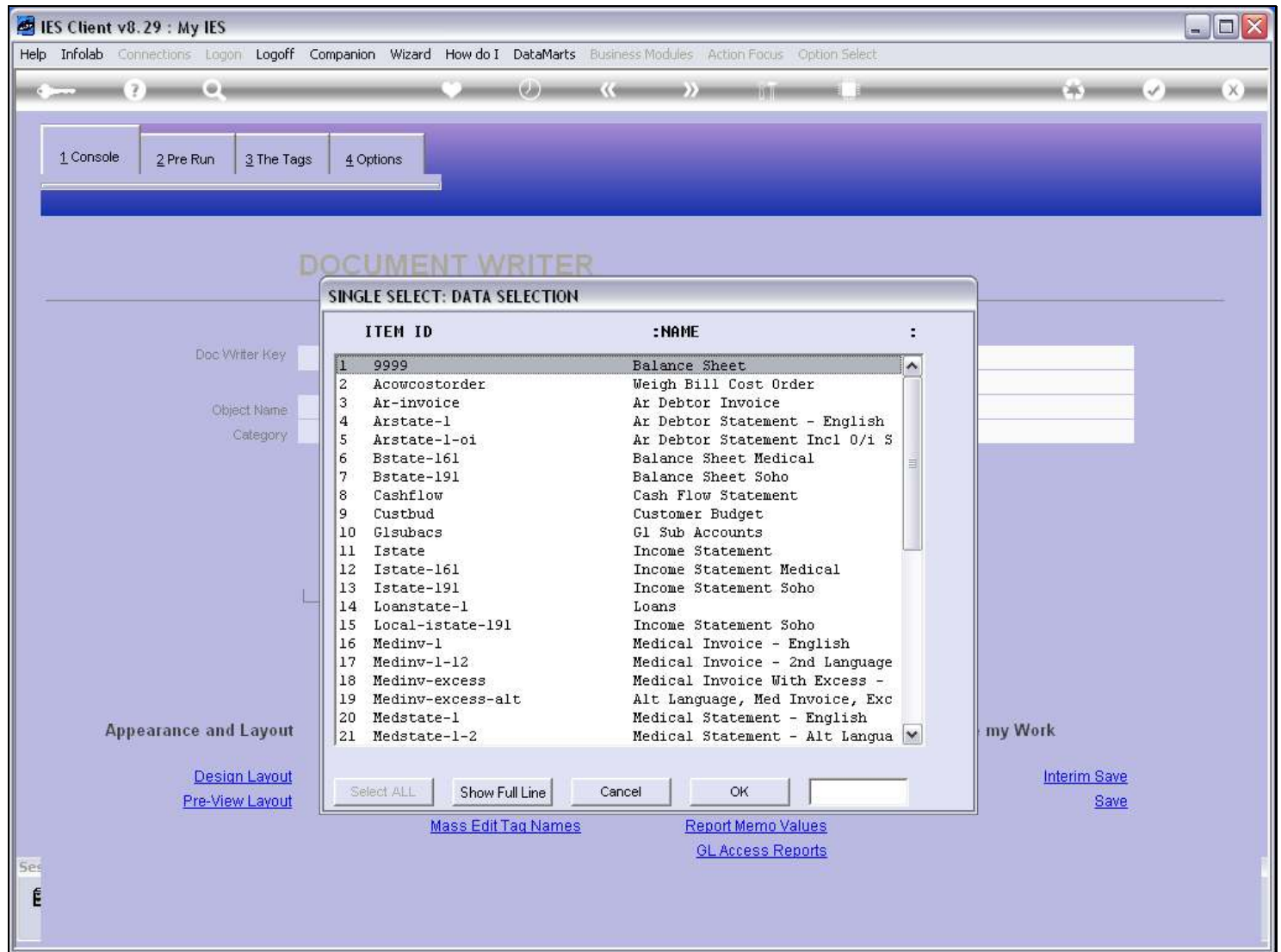
## Page 5 of 15

Slide 6 - Slide 6



Slide notes

## Slide 7 - Slide 7



## Slide notes

It is recommended that we have a local convention for DocWriter Keys so that we can easily identify local Reports, which we may change. The ones we see here are all IES system Reports, and they should not be changed. Of course, it is allowed to use a local version for any standard IES Report, but the way to do that is to make a Copy, modify the Copy, and then register a Swap so that the system will perform the local version instead.

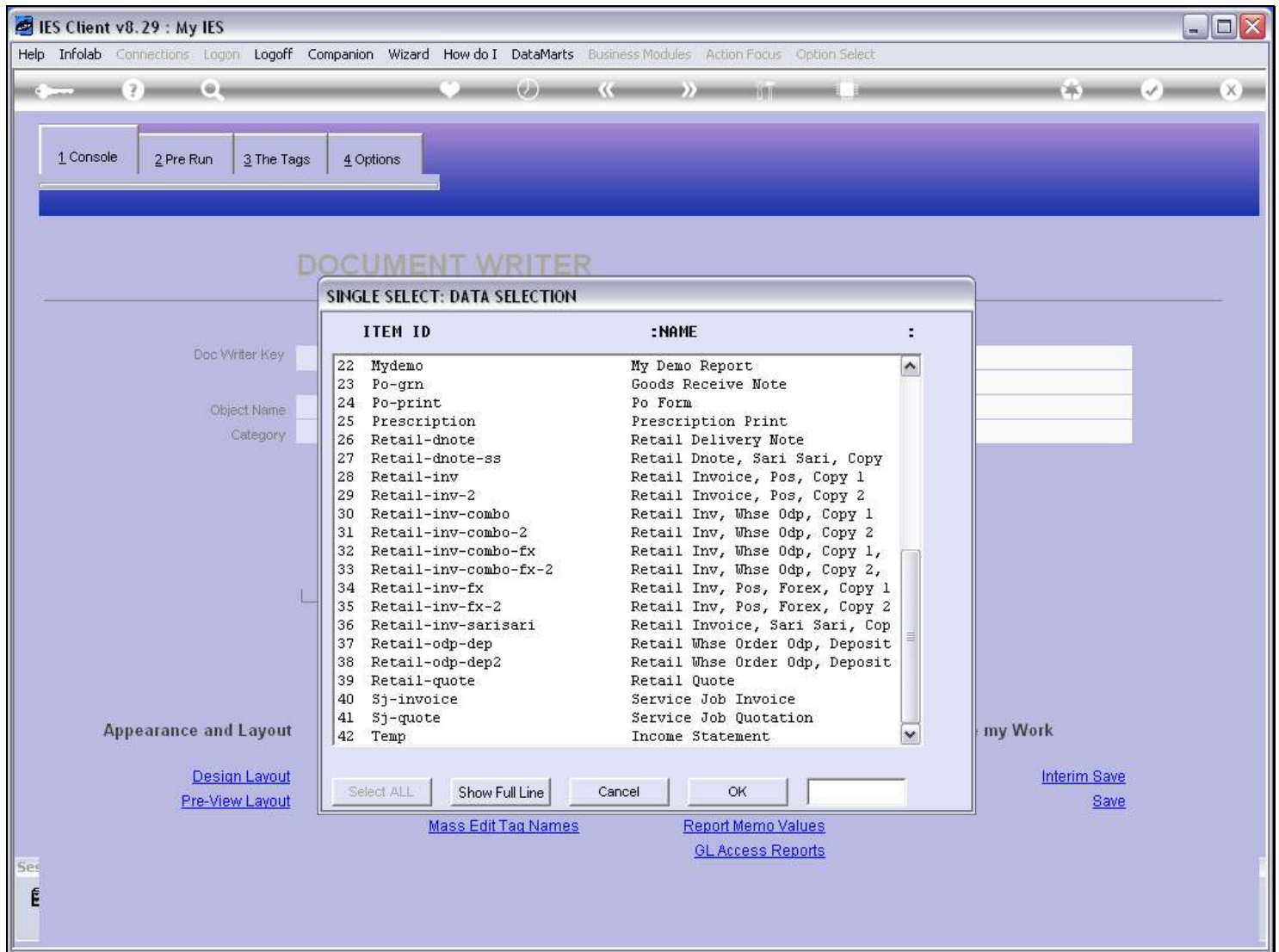
**Slide 8 - Slide 8**



**Slide notes**

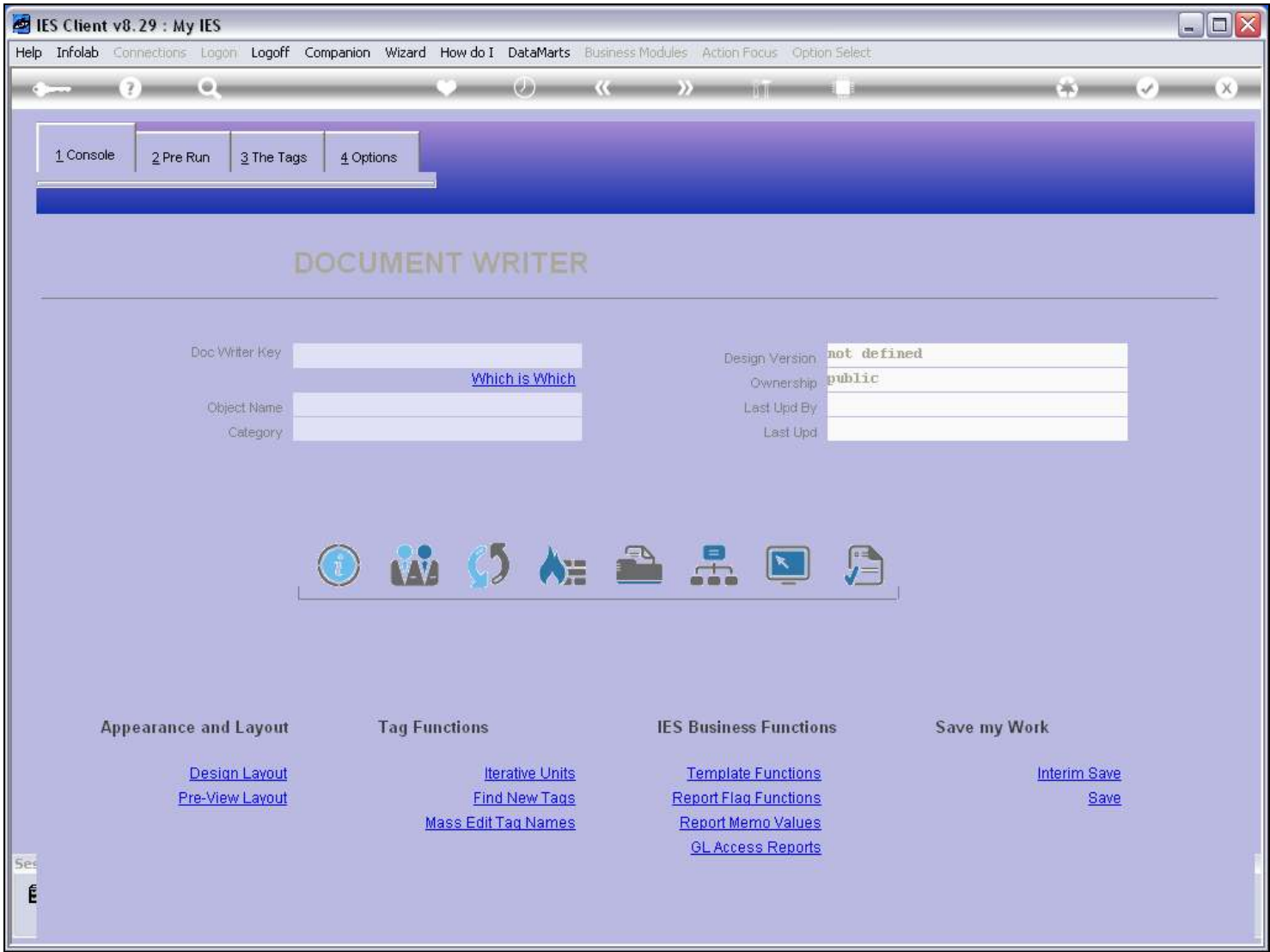


## Slide 9 - Slide 9

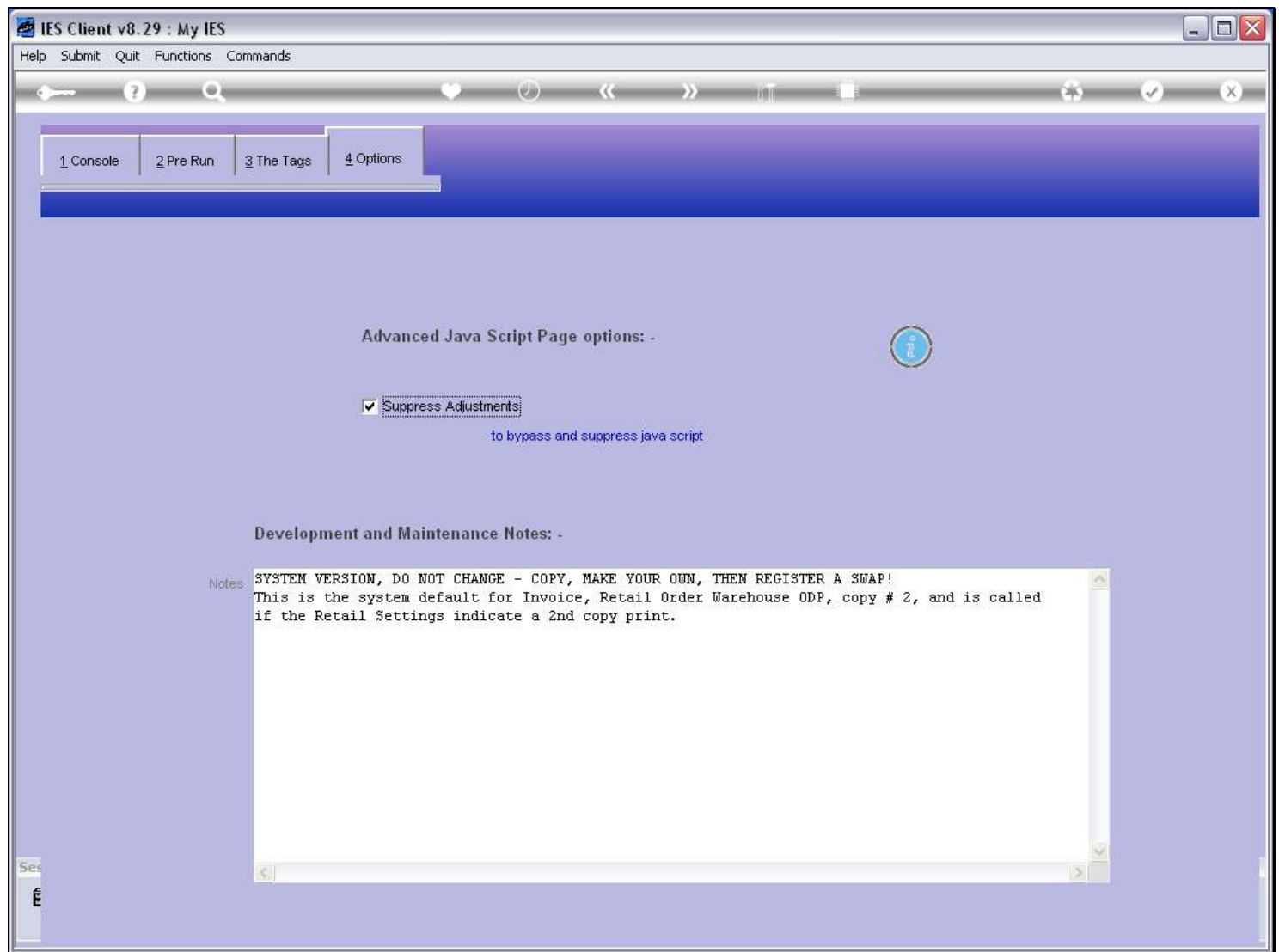


## Slide notes

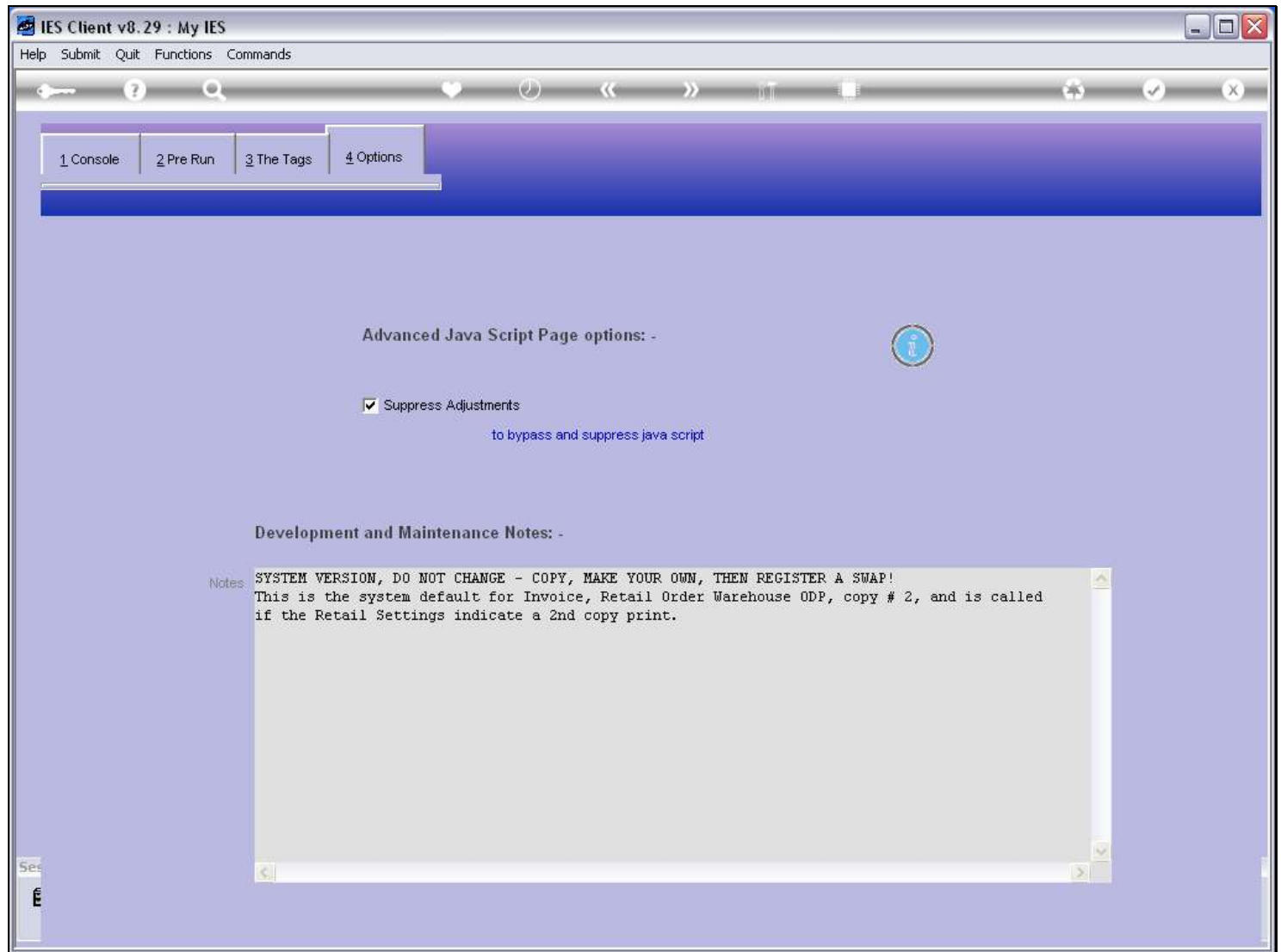
Slide 10 - Slide 10

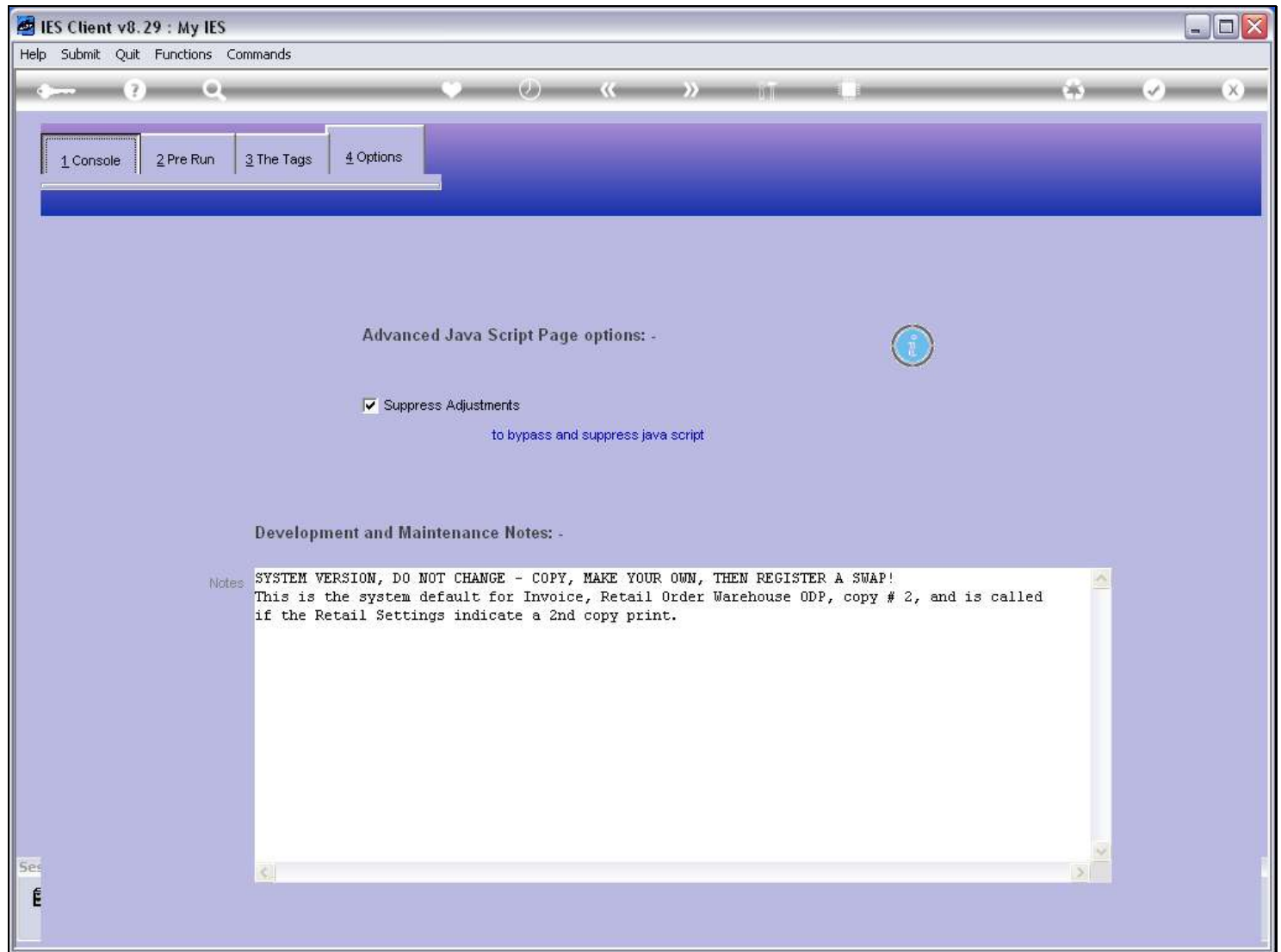


Slide notes

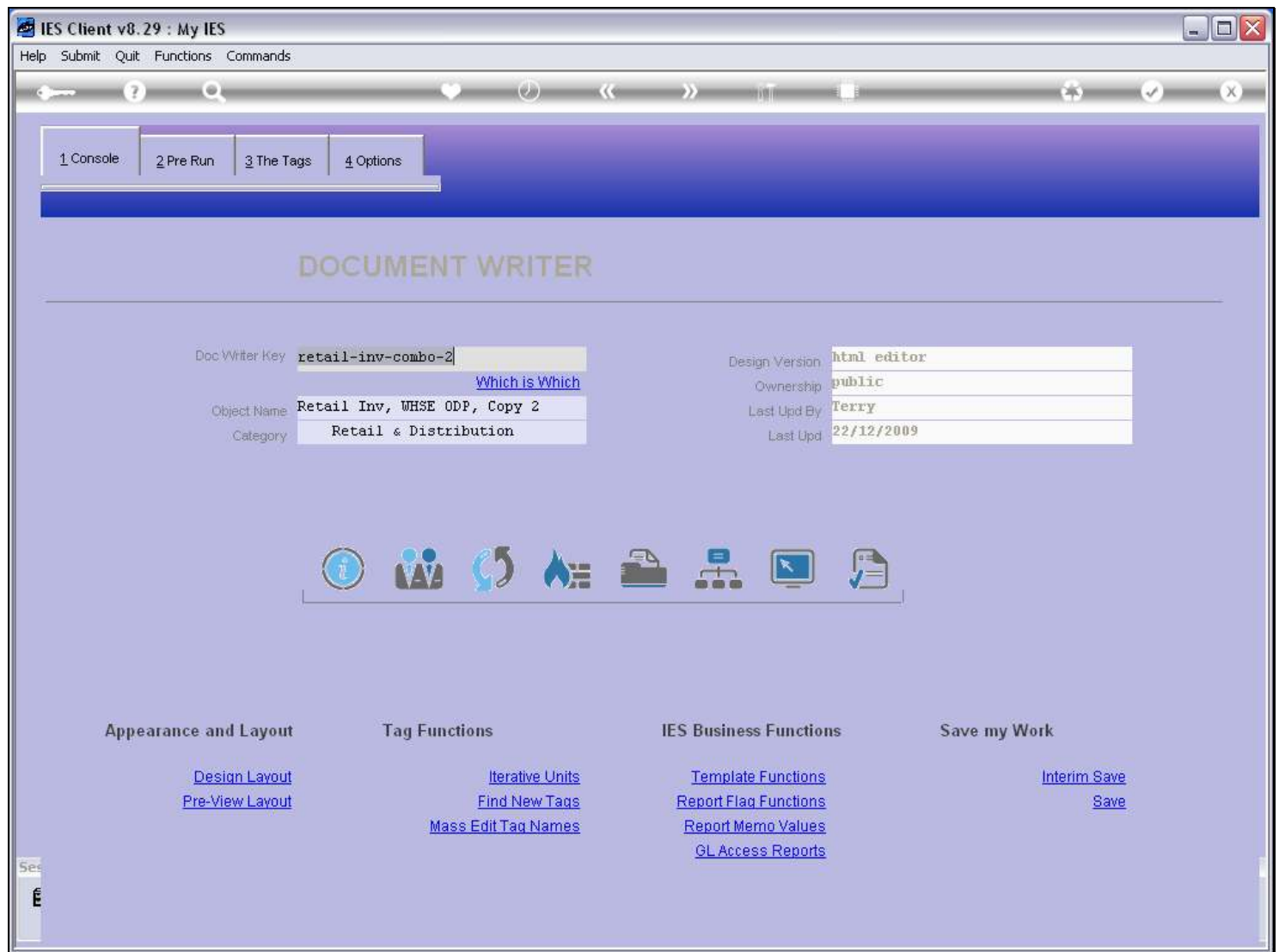
**Slide 11 - Slide 11****Slide notes**

If we select a system Report, it will usually say clearly at the Notes field that it is a system version and should not be changed.

**Slide 12 - Slide 12****Slide notes**

**Slide 13 - Slide 13****Slide notes**

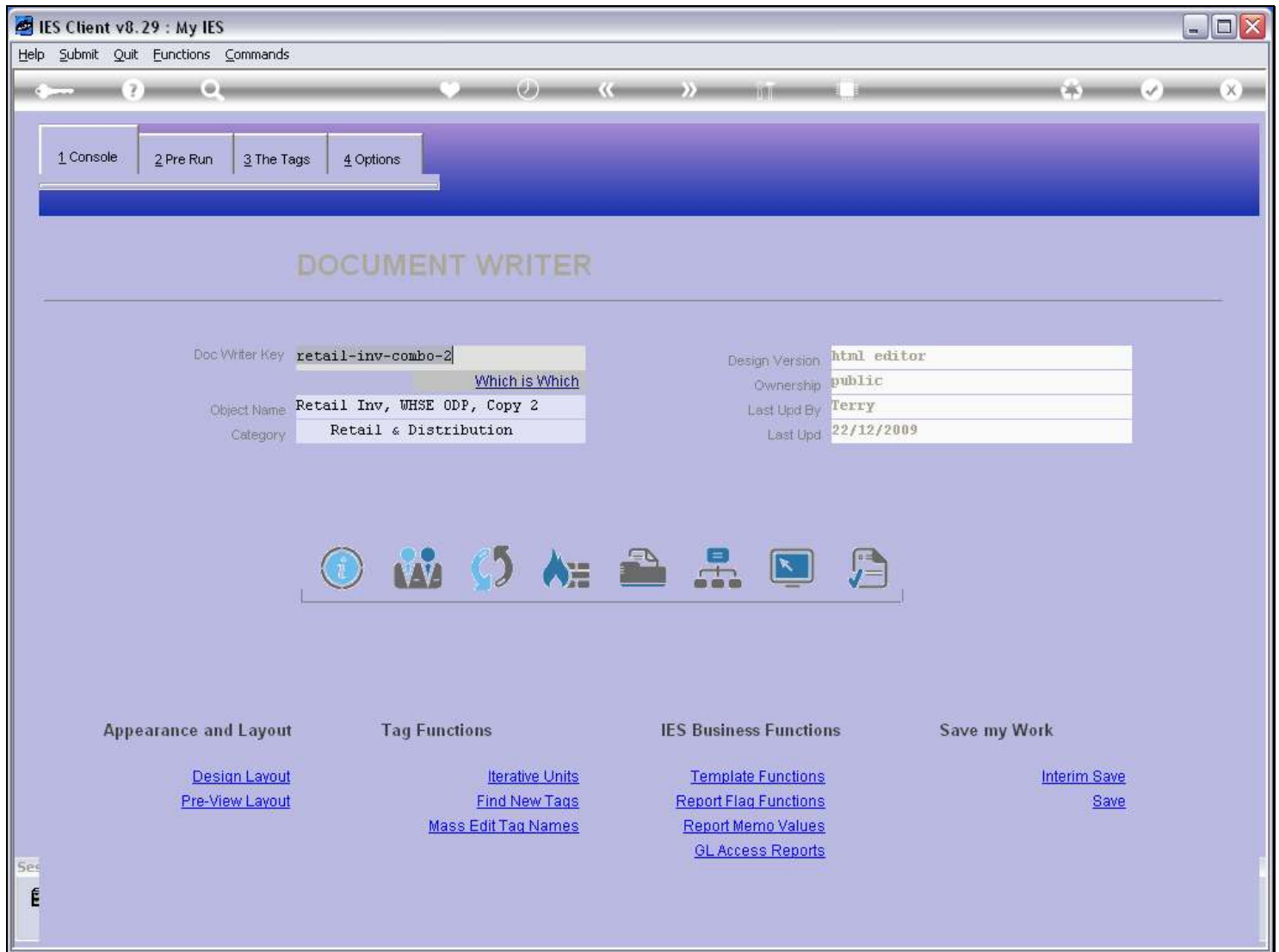
## Slide 14 - Slide 14



## Slide notes

We can also use the 'which is which' Report to see which are system objects.

## Slide 15 - Slide 15



## Slide notes

So, we may make our own DocWriters Reports, as many as we like, but system Reports should not be changed, even though we may have access to do so.