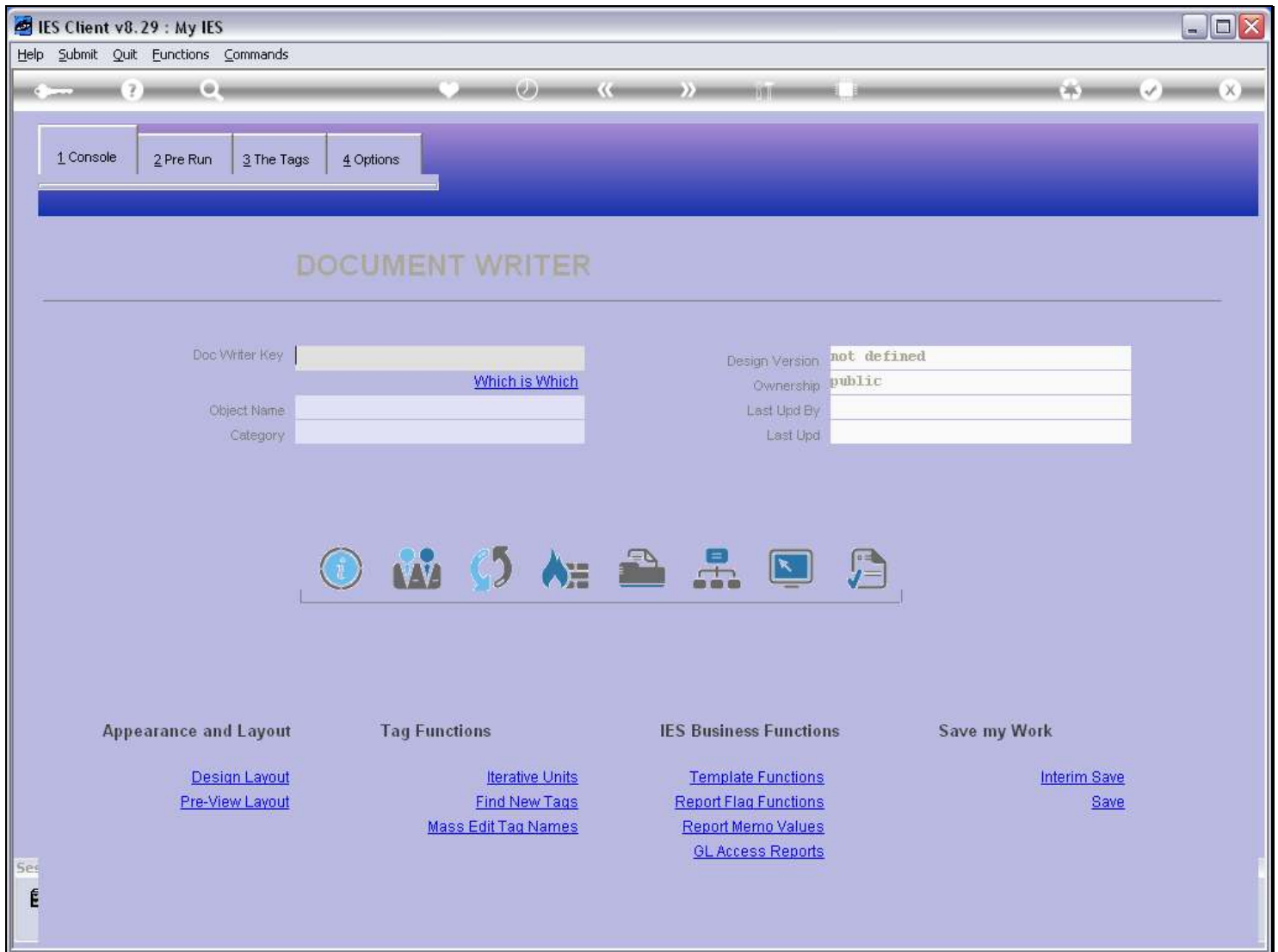


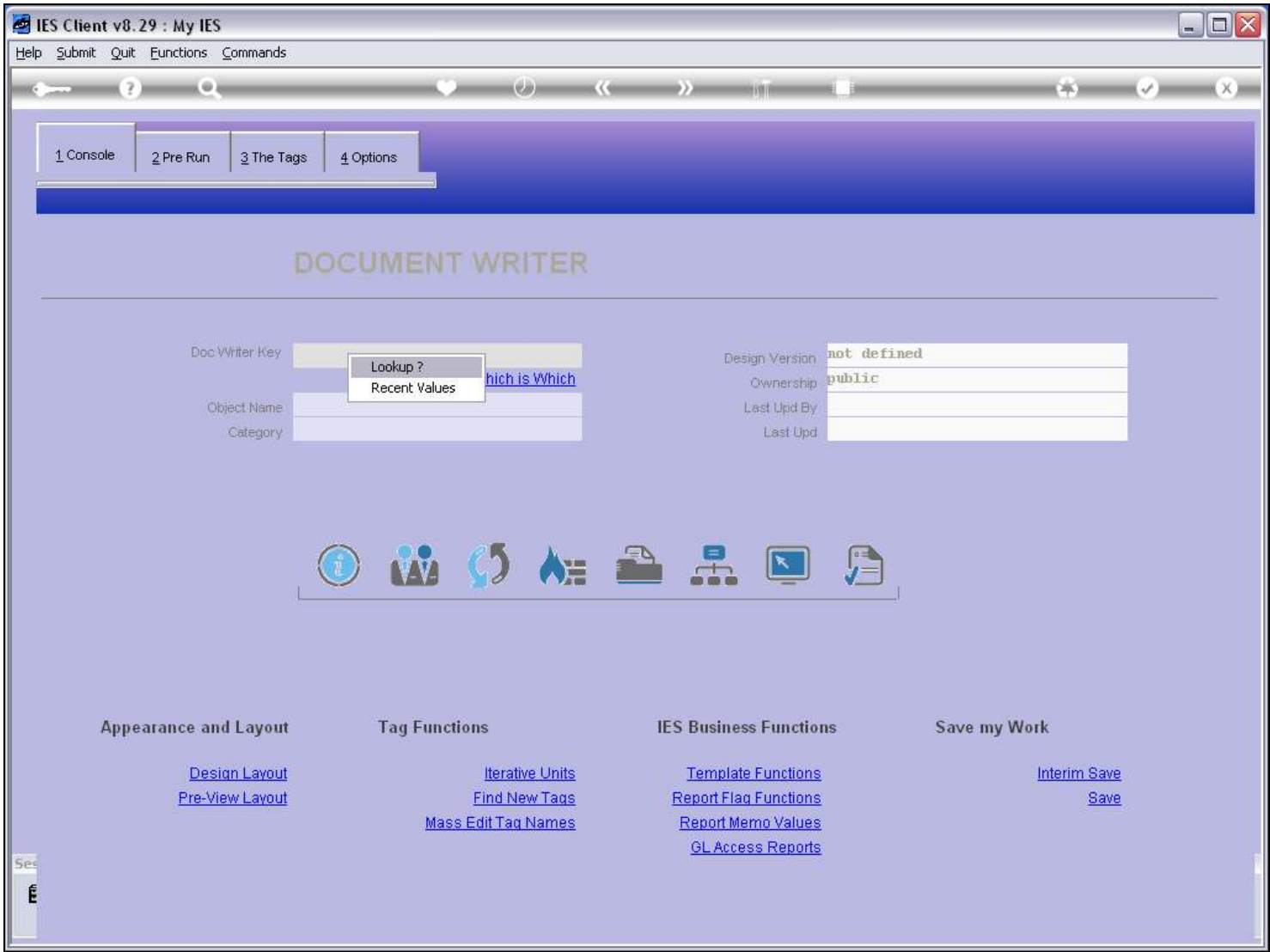
Slide 1 - Slide 1



Slide notes

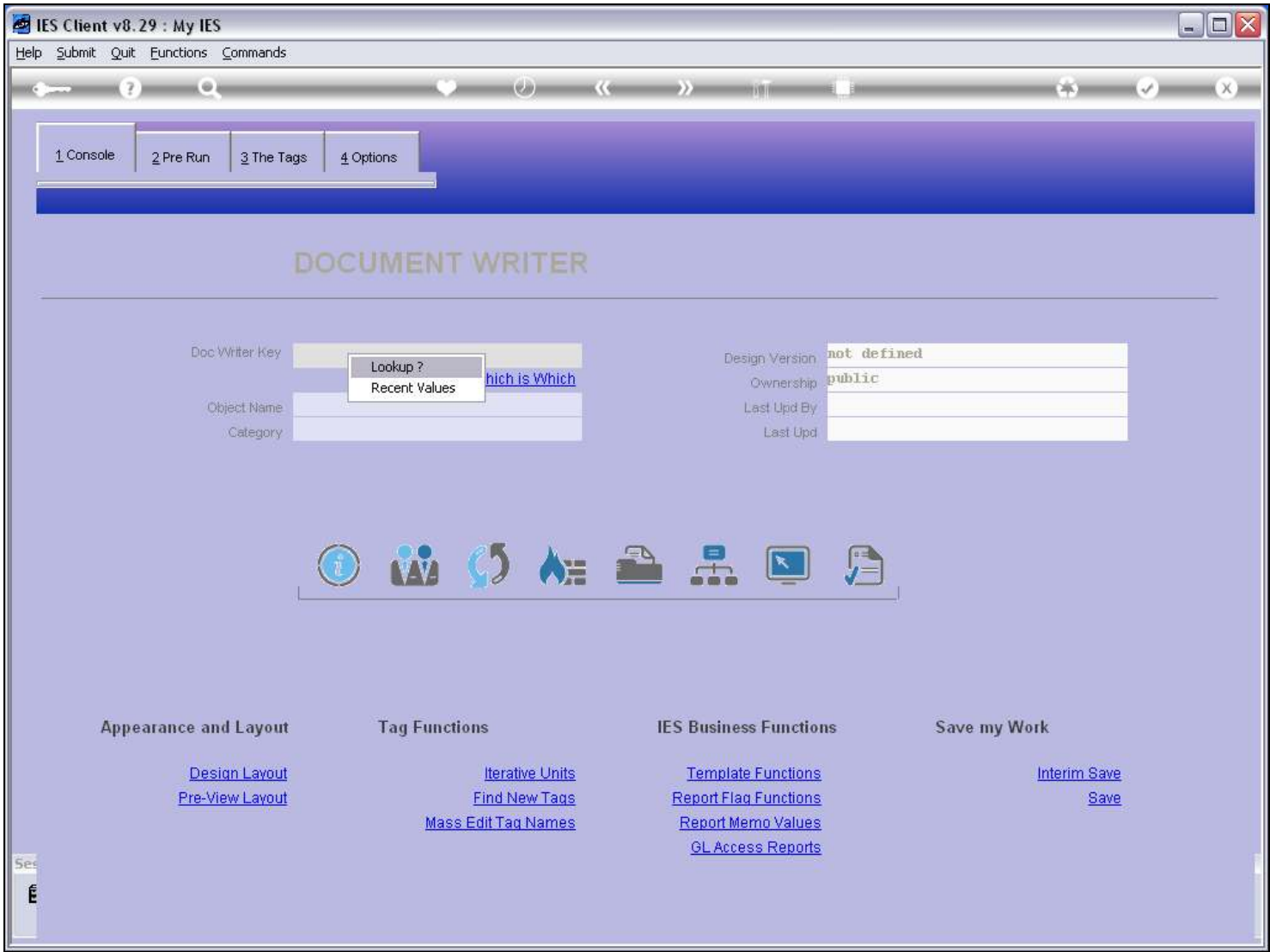
When we want to work with an existing Report, then we retrieve the Key with the lookup or any of the usual intuitive methods.

Slide 2 - Slide 2



Slide notes

Slide 3 - Slide 3

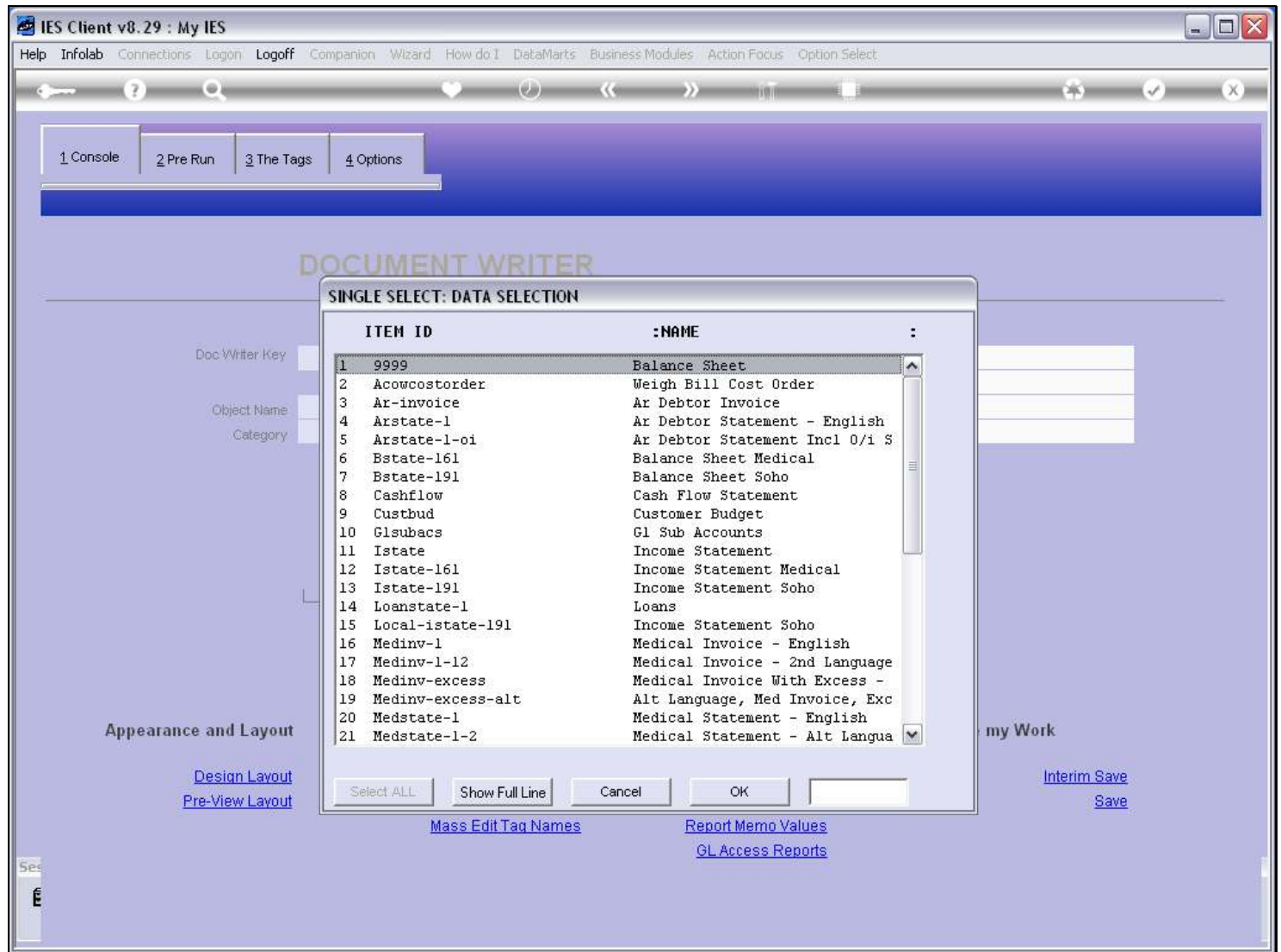


Slide notes

The screenshot shows the IES Client v8.29 application window titled "My IES". The menu bar includes Help, Submit, Quit, Functions, and Commands. A toolbar at the top contains icons for key, help, search, heart, clock, left arrow, right arrow, list, grid, refresh, checkmark, and close. The main area has a blue header with the text "Please Choose the Data To Select -". Below this, there are two instructional paragraphs: "The selection tips tell you what kind of selection rule is being applied ..." and "You may change any 'My Choice' value to prescribe which data should be selected ...". Between these paragraphs are two blue downward-pointing arrows. A central table displays selection rules. The first row is numbered "1" and contains "Name = ?" under the "Selection Tip" column and "[]" under the "My Choice" column. There are several empty rows below. At the bottom of the table are buttons: Nex, Pre, Add, Ins, Ed, Del. On the right side of the table is a vertical scrollbar. In the bottom right corner, there is a blue "Next" link. The status bar at the very bottom shows "See" and a small icon.

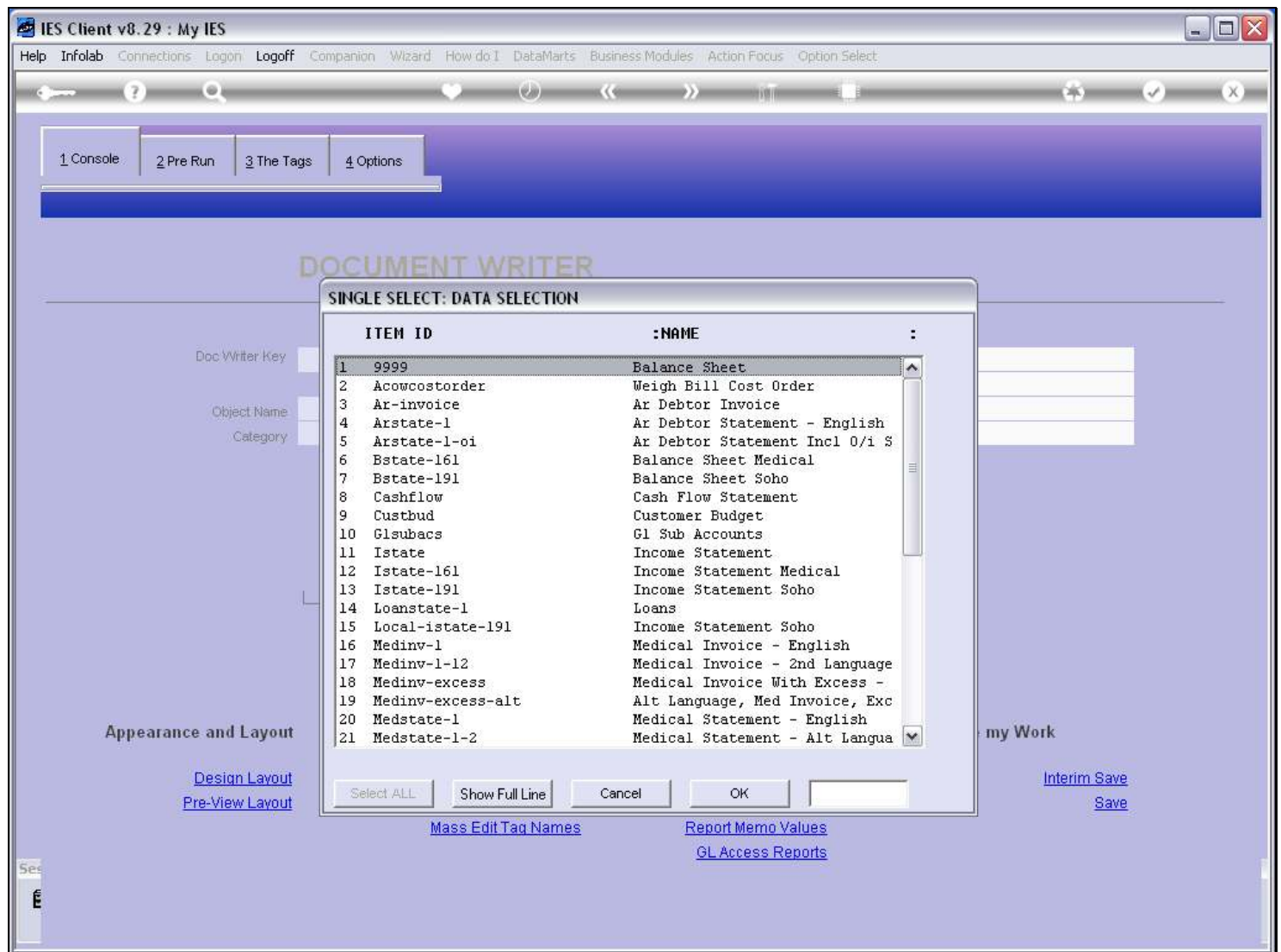
Page 4 of 12

Slide 5 - Slide 5



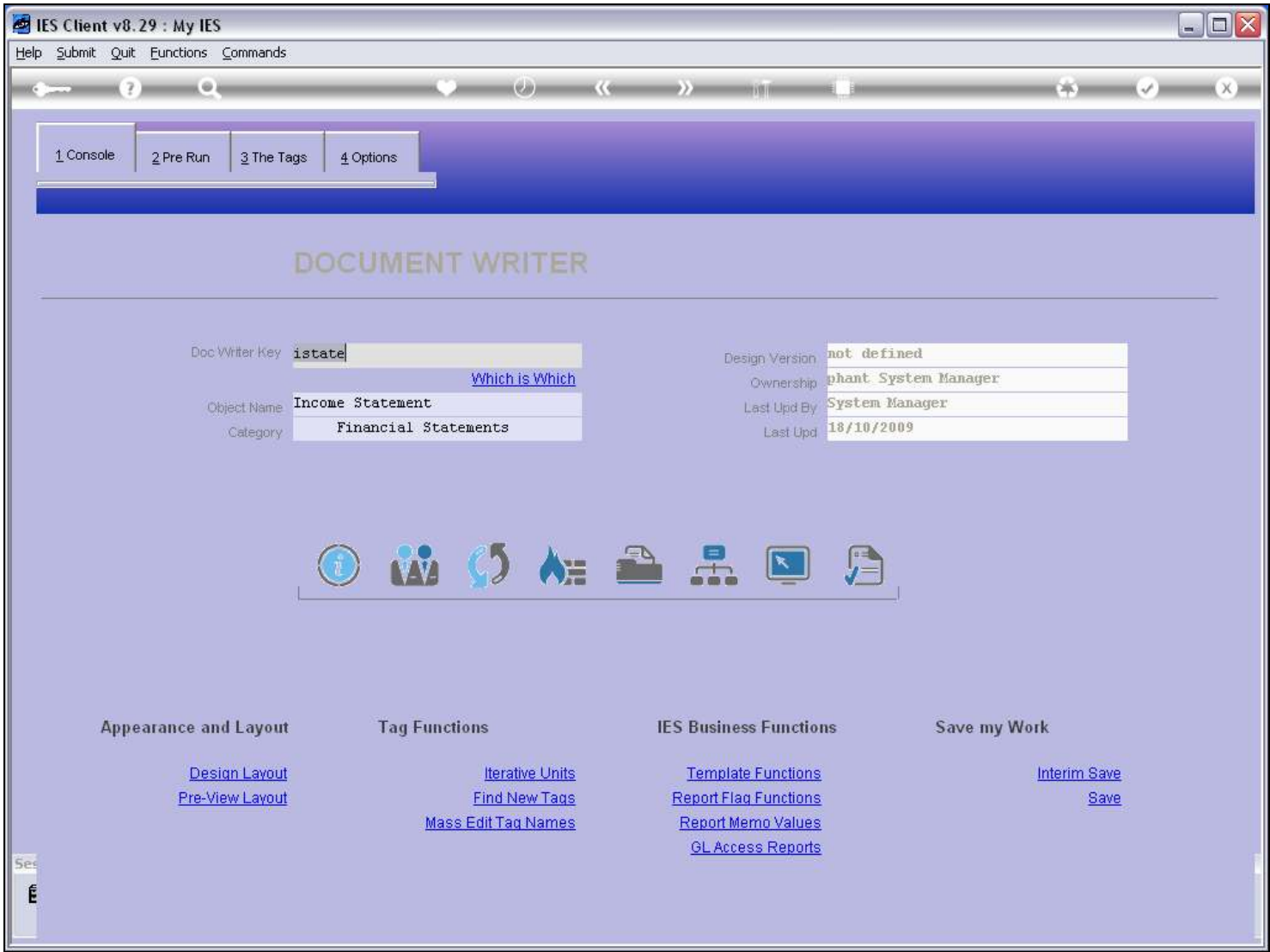
Slide notes

Slide 6 - Slide 6



Slide notes

Slide 7 - Slide 7



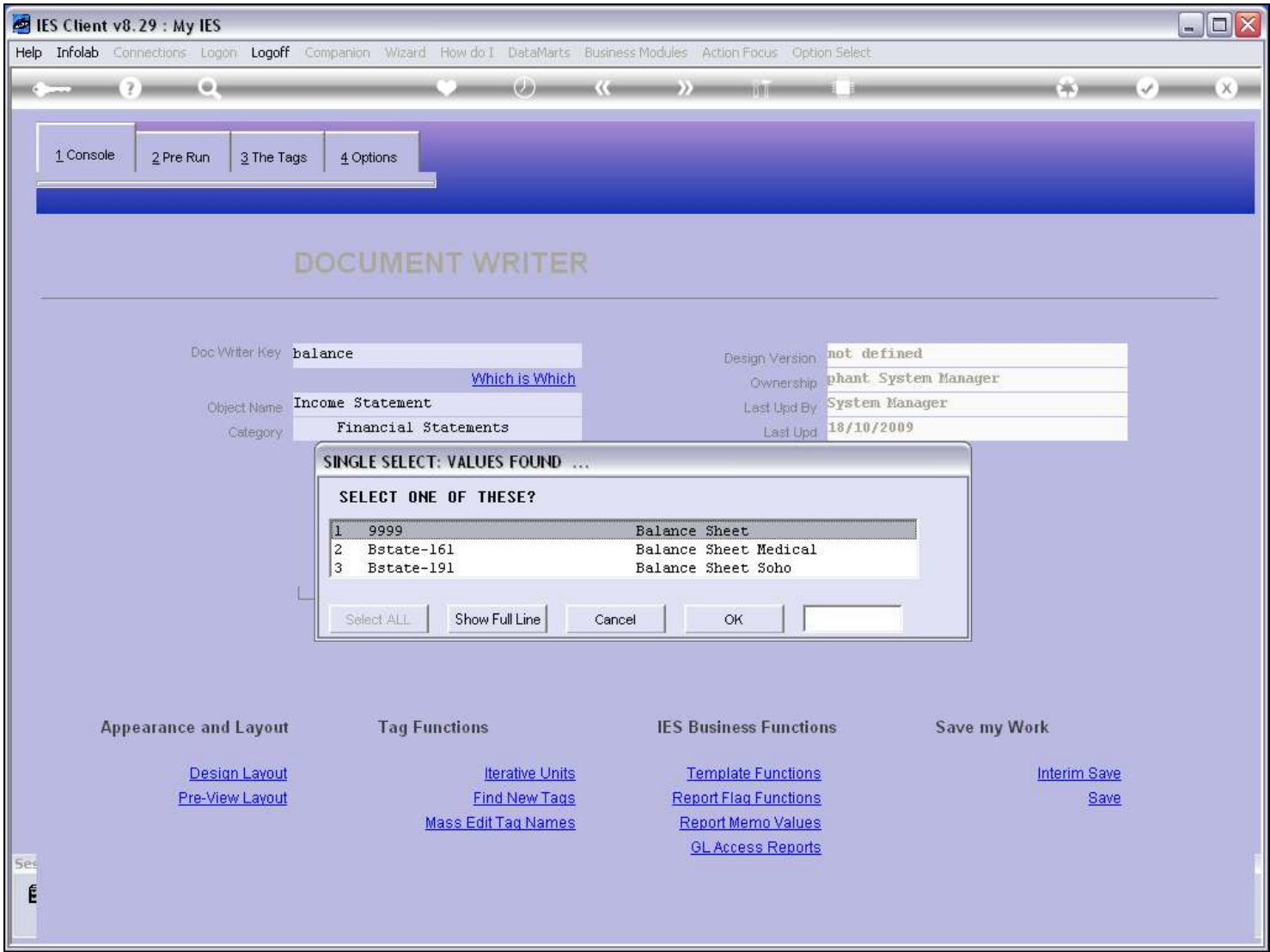
Slide notes

Slide 8 - Slide 8



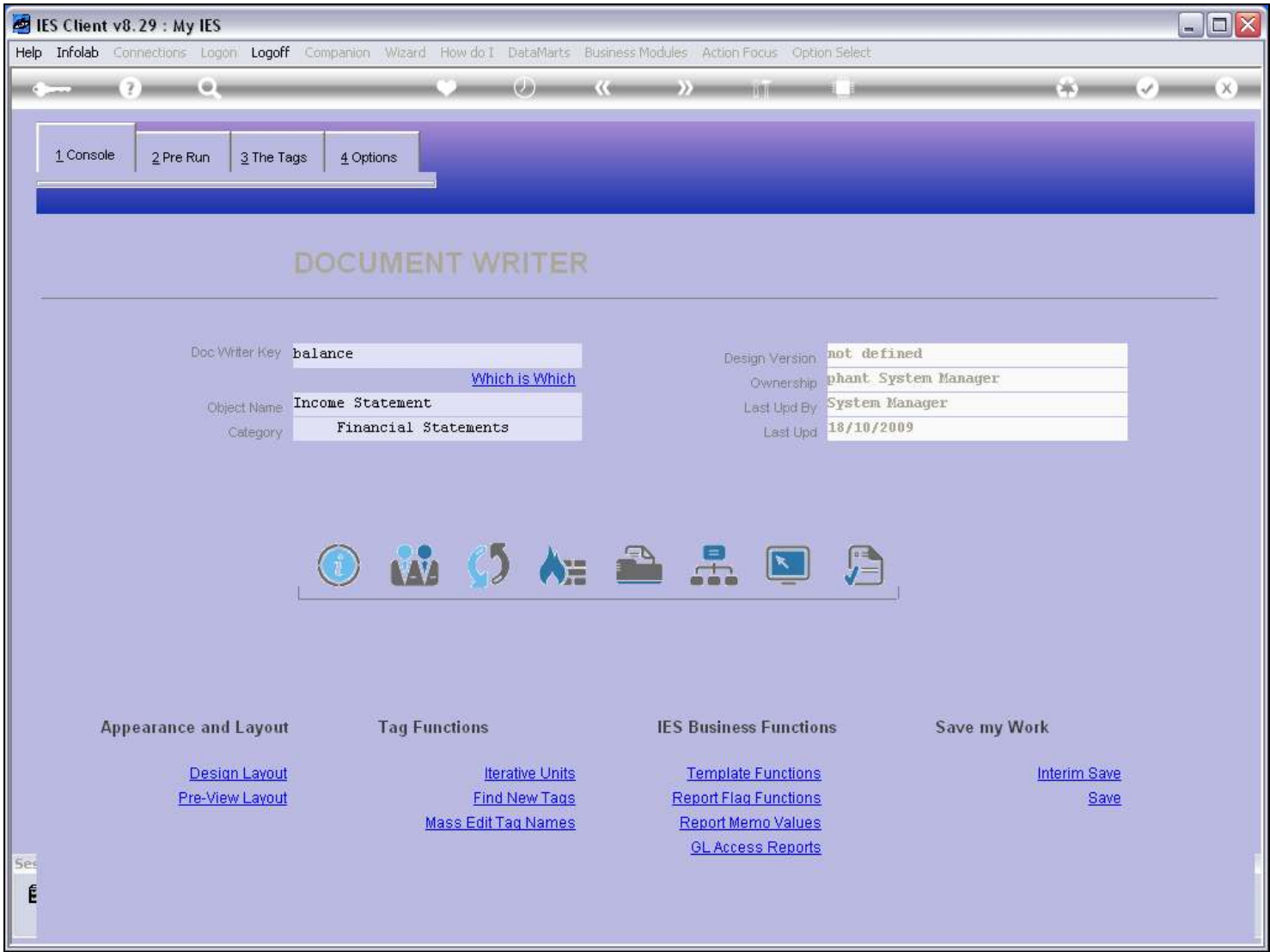
Slide notes

Slide 9 - Slide 9



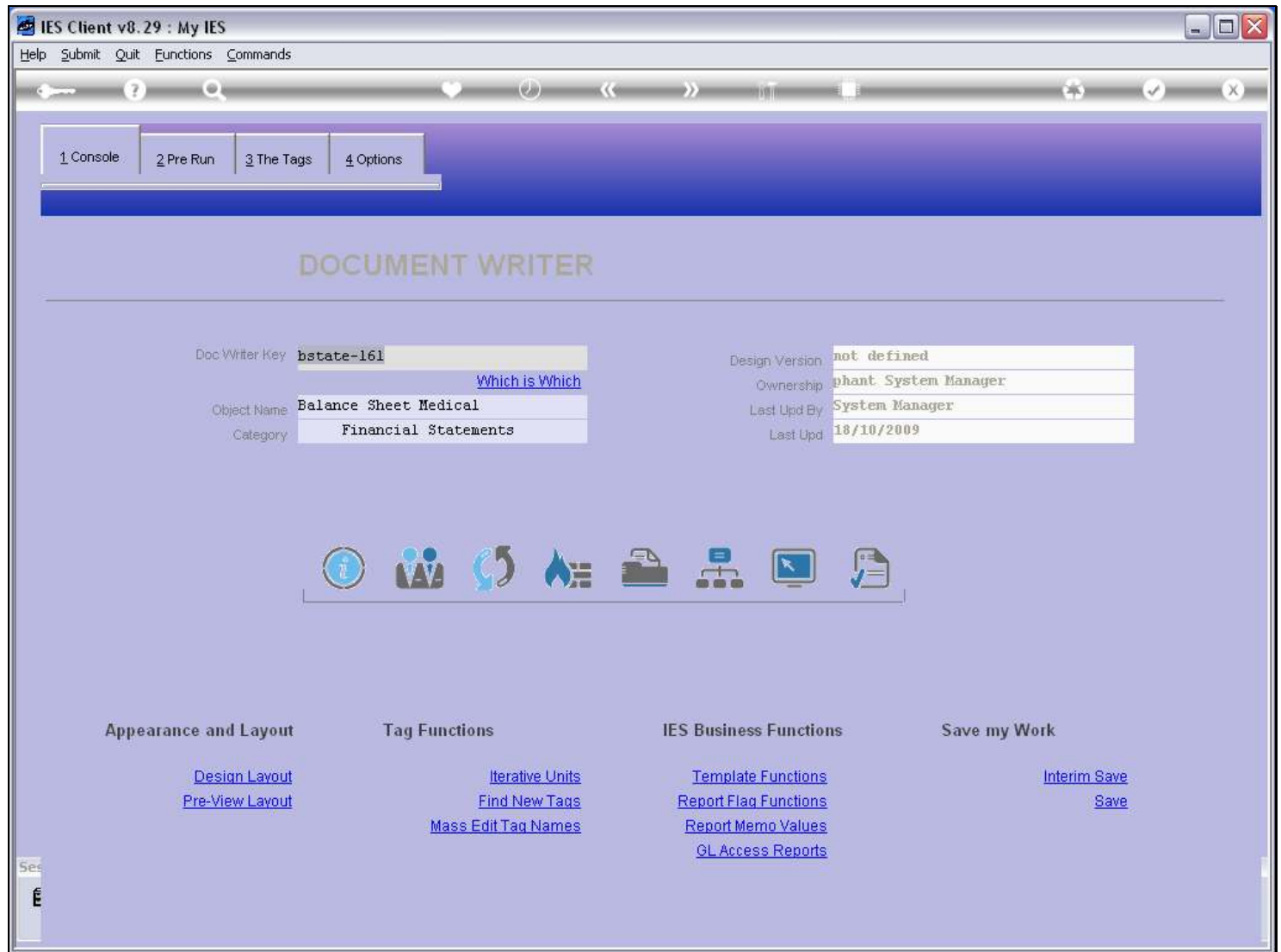
Slide notes

Slide 10 - Slide 10



Slide notes

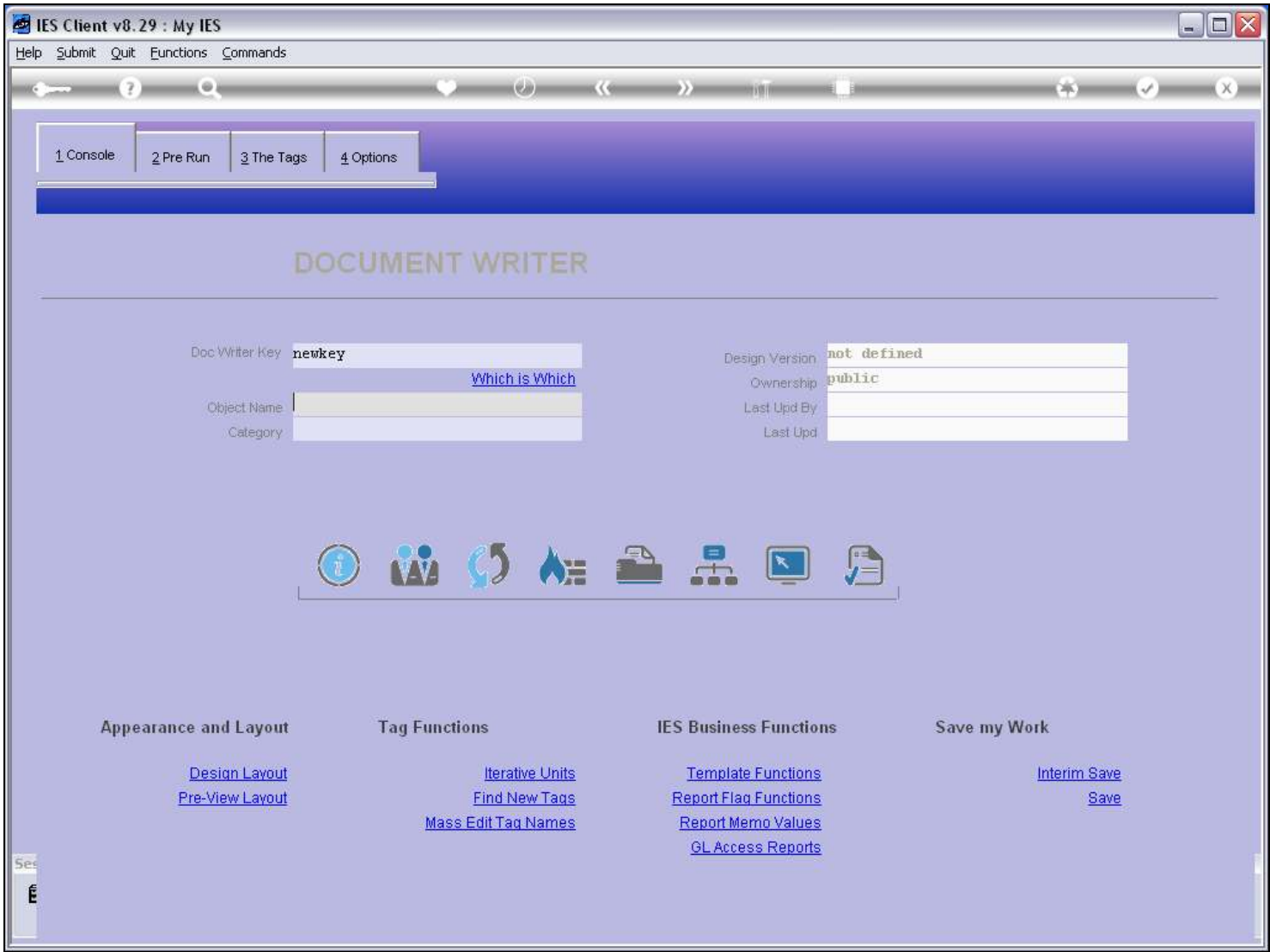
Slide 11 - Slide 11



Slide notes

When we want to work with a brand new Report, then we choose and type a new Key that is not yet in use. There should be no spaces in this Key, but we are reasonably free as to the rest of the Key design. It is just a good idea to be unique in our Key choice, so that there is no possibility of a clash with a new Key that may appear in a future IES release for a system standard Report.

Slide 12 - Slide 12



Slide notes

Using a new Key results in the system sensing that we are doing a new Report.