

Slide 1 - Slide 1

IES Client v8.29 : My IES

Help Submit Quit Functions Commands

1 Console 2 Pre Run 3 The Tags 4 Options

Tag Result Macros: -

>>> Tags	Value Names	Exec It
1 0001	Co Name	1
2 0002	Period	1
3 0014	Stock Sales: Cur	1
4 0015	Stock Sales: Bud	1
5 0016	Stock Sales: YTD	1
6 0017	Stock Sales: YTD Bud	1
7 0018	Stock Sales: Ann Bud	1
8 0019	Interest Received: Cur	1
9 0020	Interest Received: Bud	1
10 0021	Interest Received: YTD	1
11 0022	Interest Received: YTD Bud	1
12 0023	Interest Received: Ann Bud	1
13 0024	Tot Revenue: Cur	1
14 0025	Tot Revenue: Bud	1
15 0026	Tot Revenue: YTD	1
16 0027	Tot Revenue: YTD Bud	1
17 0028	Tot Revenue: Ann Bud	1
18 0029	Rent: Cur	1
19 0030	Rent: Bud	1
20 0031	Rent: YTD	1
21 0032	Rent: YTD Bud	1
22 0033	Rent: Ann Bud	1
23 0034	Bad Debts: Cur	1
24 0035	Bad Debts: Bud	1
25 0036	Bad Debts: YTD	1

Where is that tag !

[Select from Tag List](#)

[Search for Tag Number](#)

[Search for Tag Name](#)

Current Tag Focus: -

Row: 2

Tag #: 0002

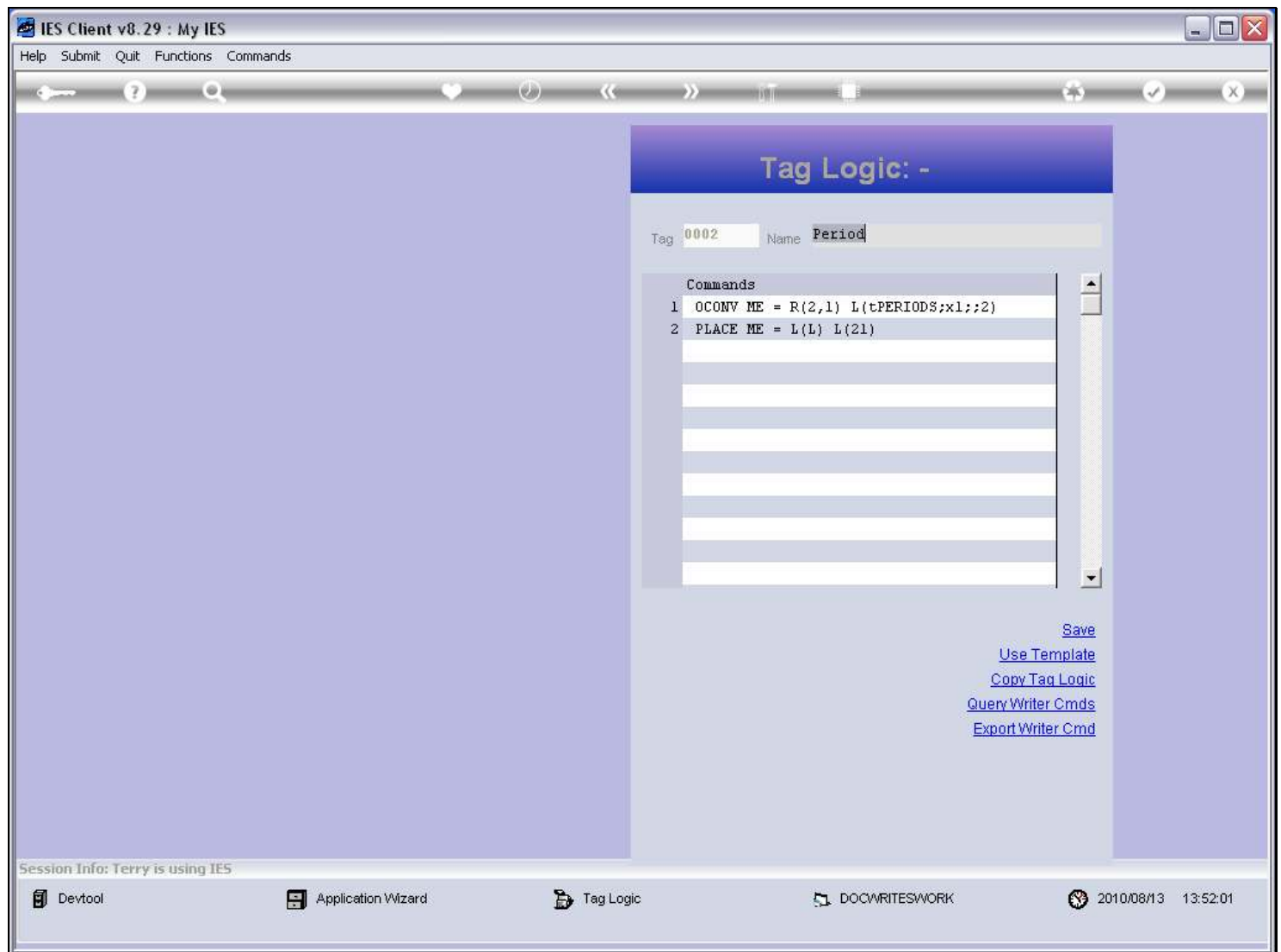
Name: Period

[Open the Tag Macro](#)

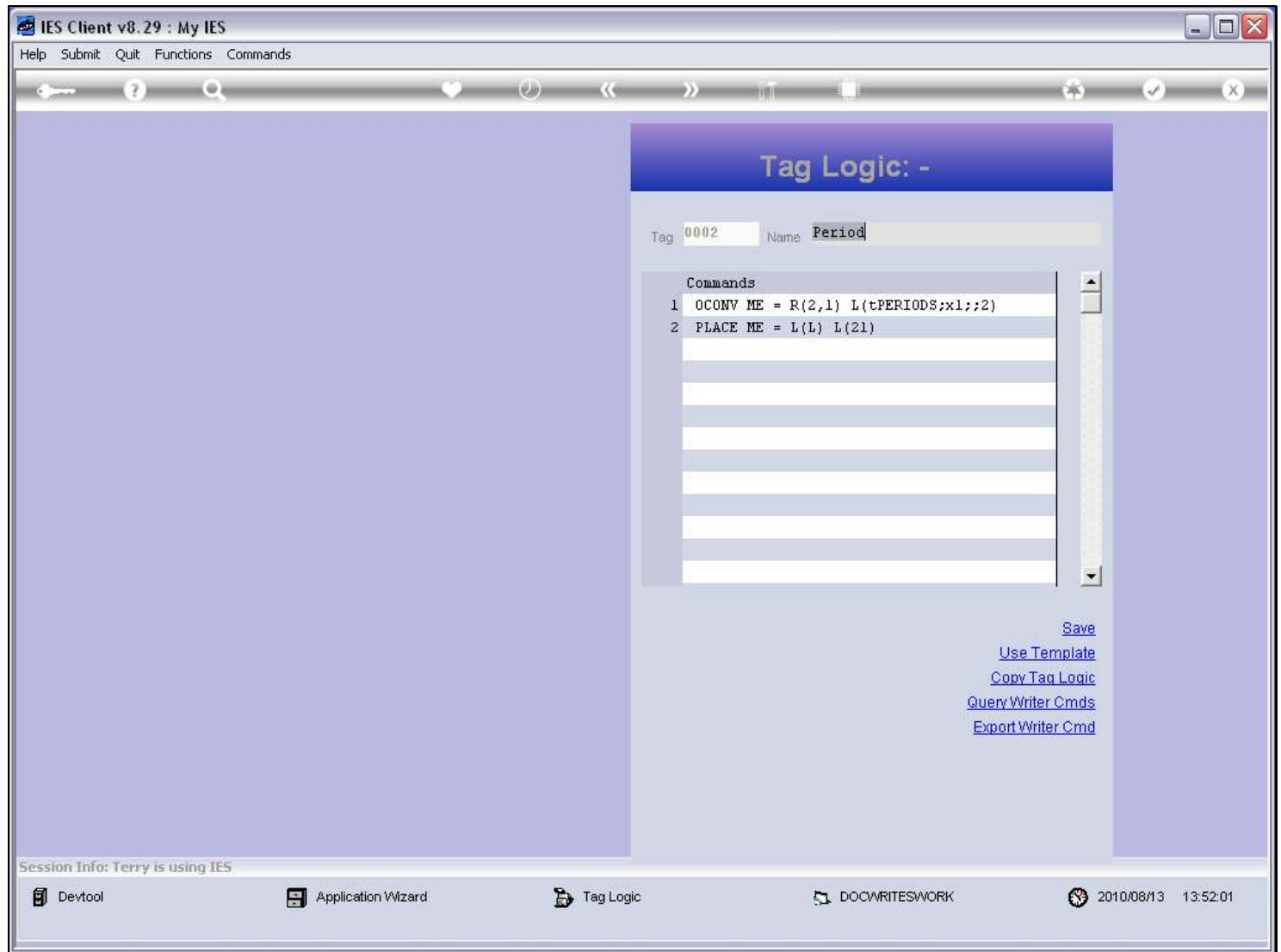
Nex Pre Add Ins Ed Del

Slide notes

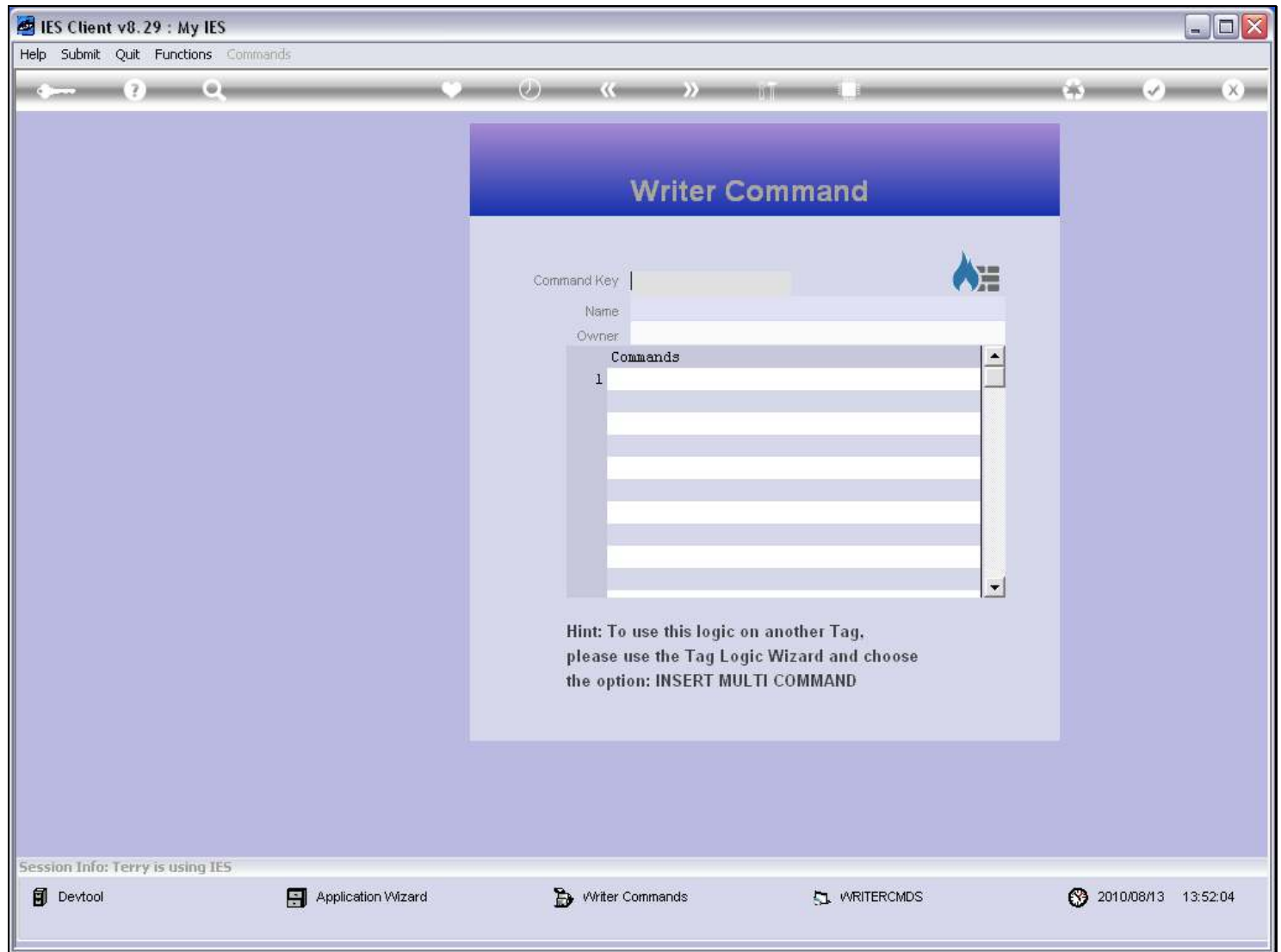
We will now see how to 'query' Writer Commands.

Slide 2 - Slide 2**Slide notes**

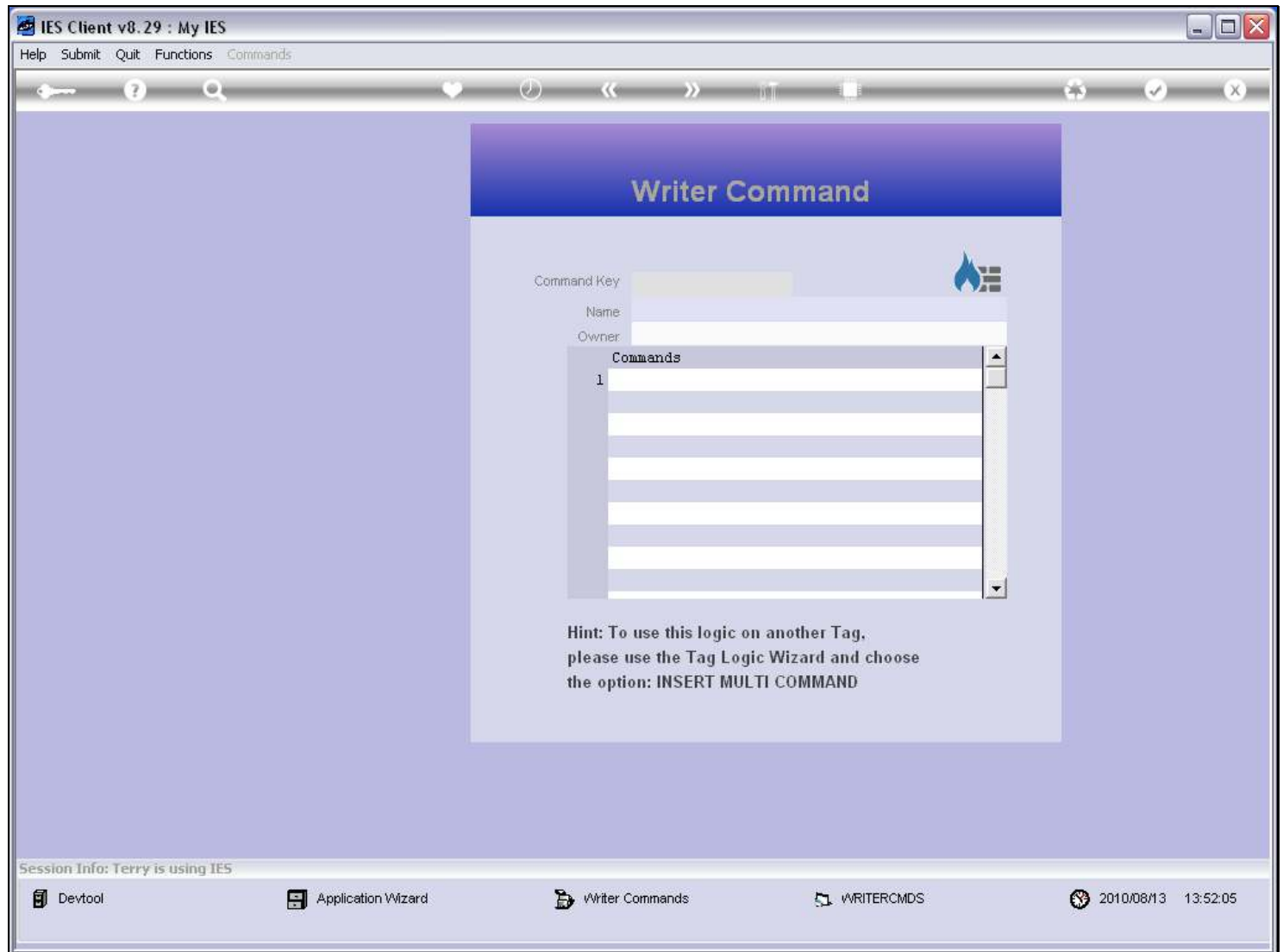
Writer Commands are stored Macros of Tag Logic, and we can only access them at Tags where we use Raw Macros, i.e. not Tag Templates.

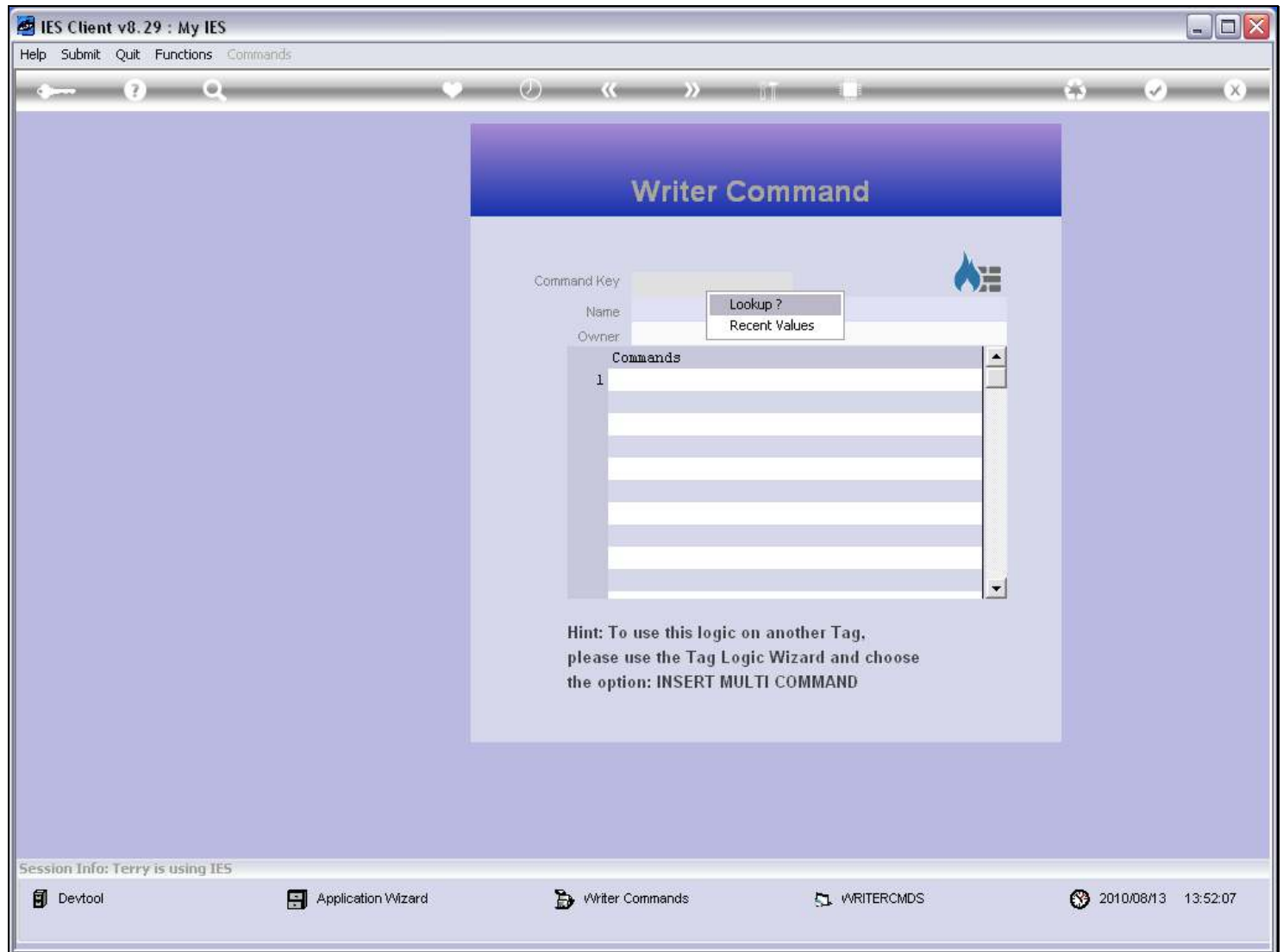
Slide 3 - Slide 3**Slide notes**

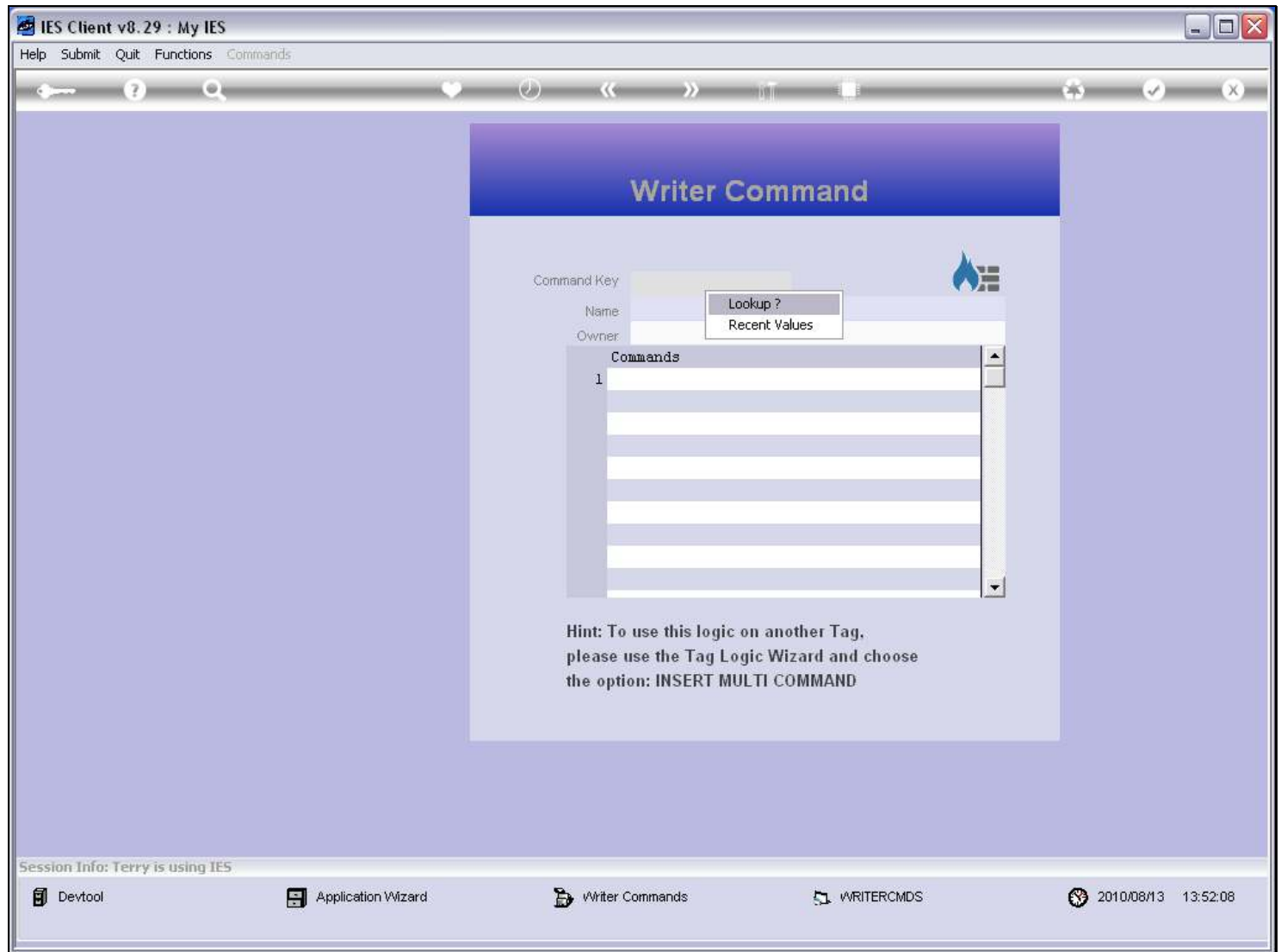
The 'Query' option is listed below the Tag Logic.

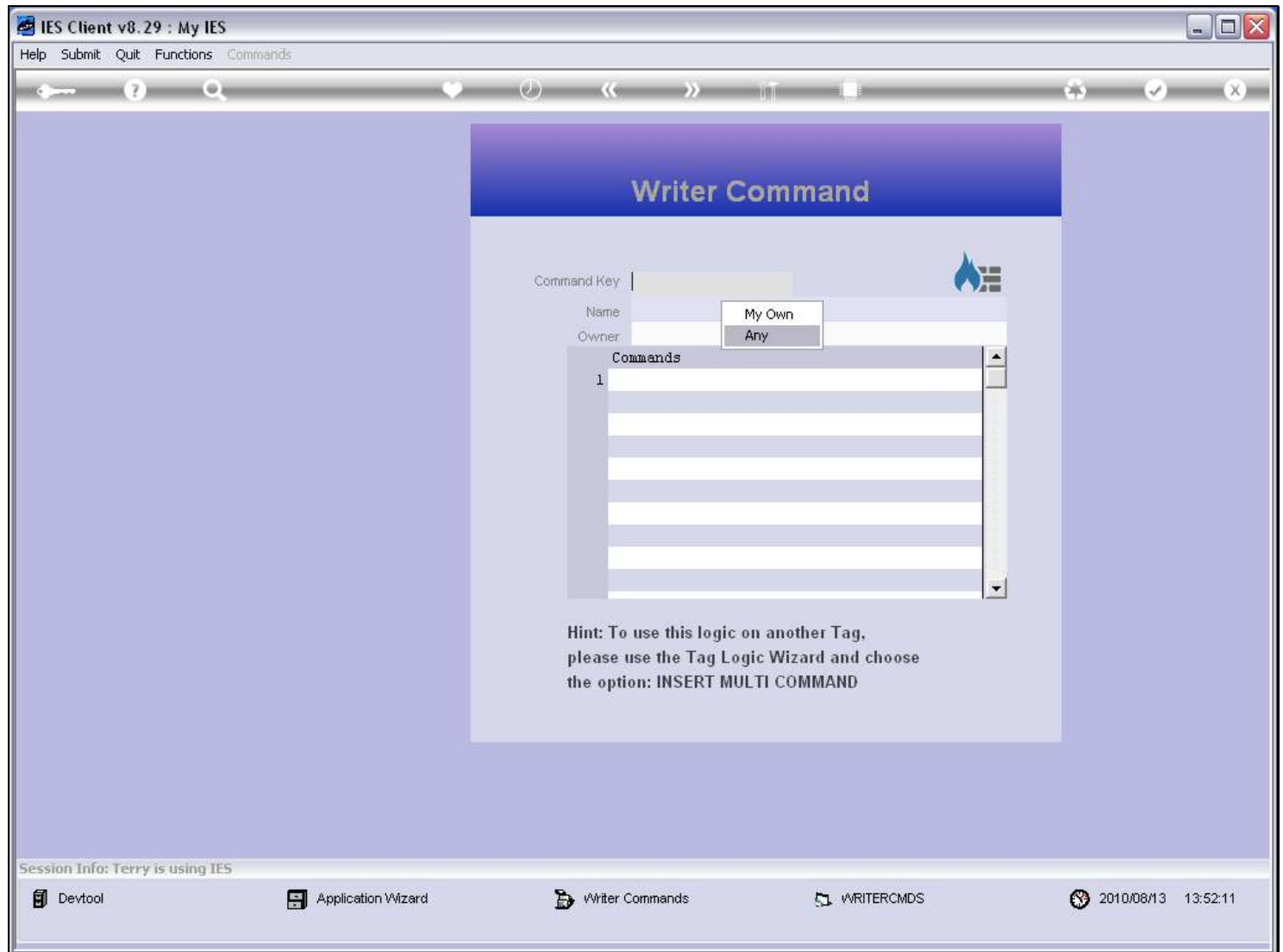
Slide 4 - Slide 4**Slide notes**

At the Query screen, we can lookup existing Writer Commands.

Slide 5 - Slide 5**Slide notes**

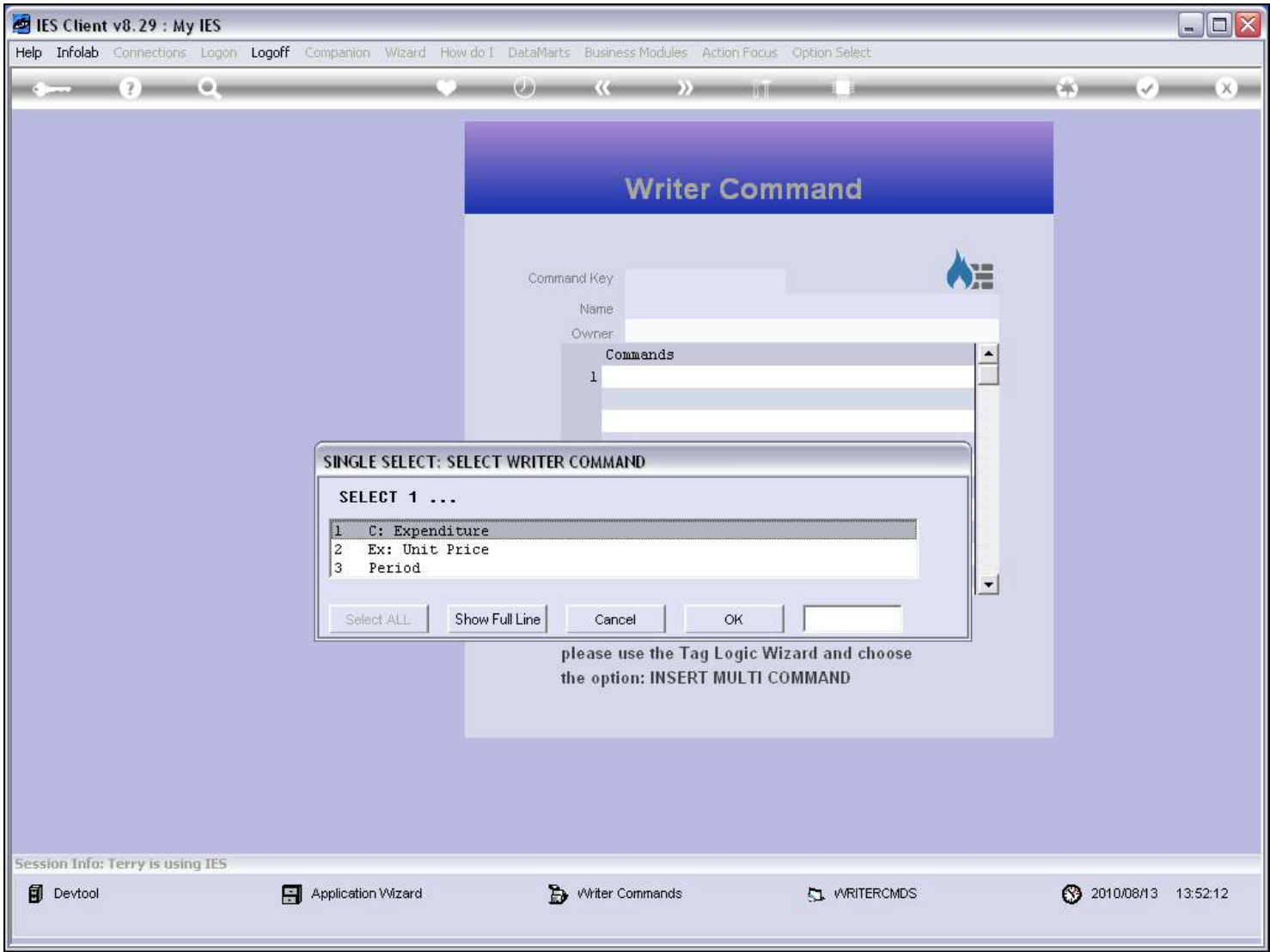
Slide 6 - Slide 6**Slide notes**

Slide 7 - Slide 7**Slide notes**

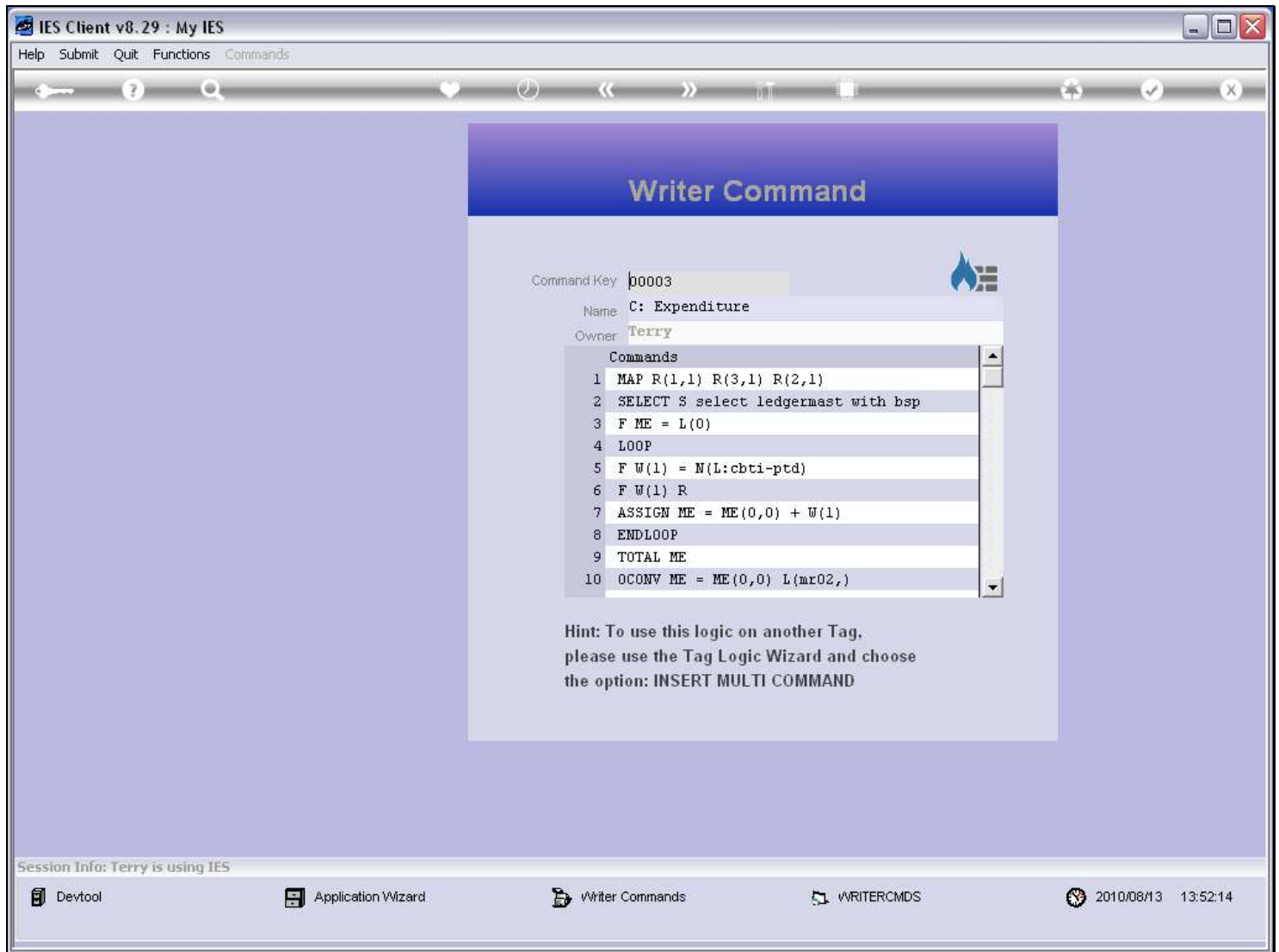
Slide 8 - Slide 8**Slide notes**

The Writer Commands are stored by User, so we can search only our own, or any.

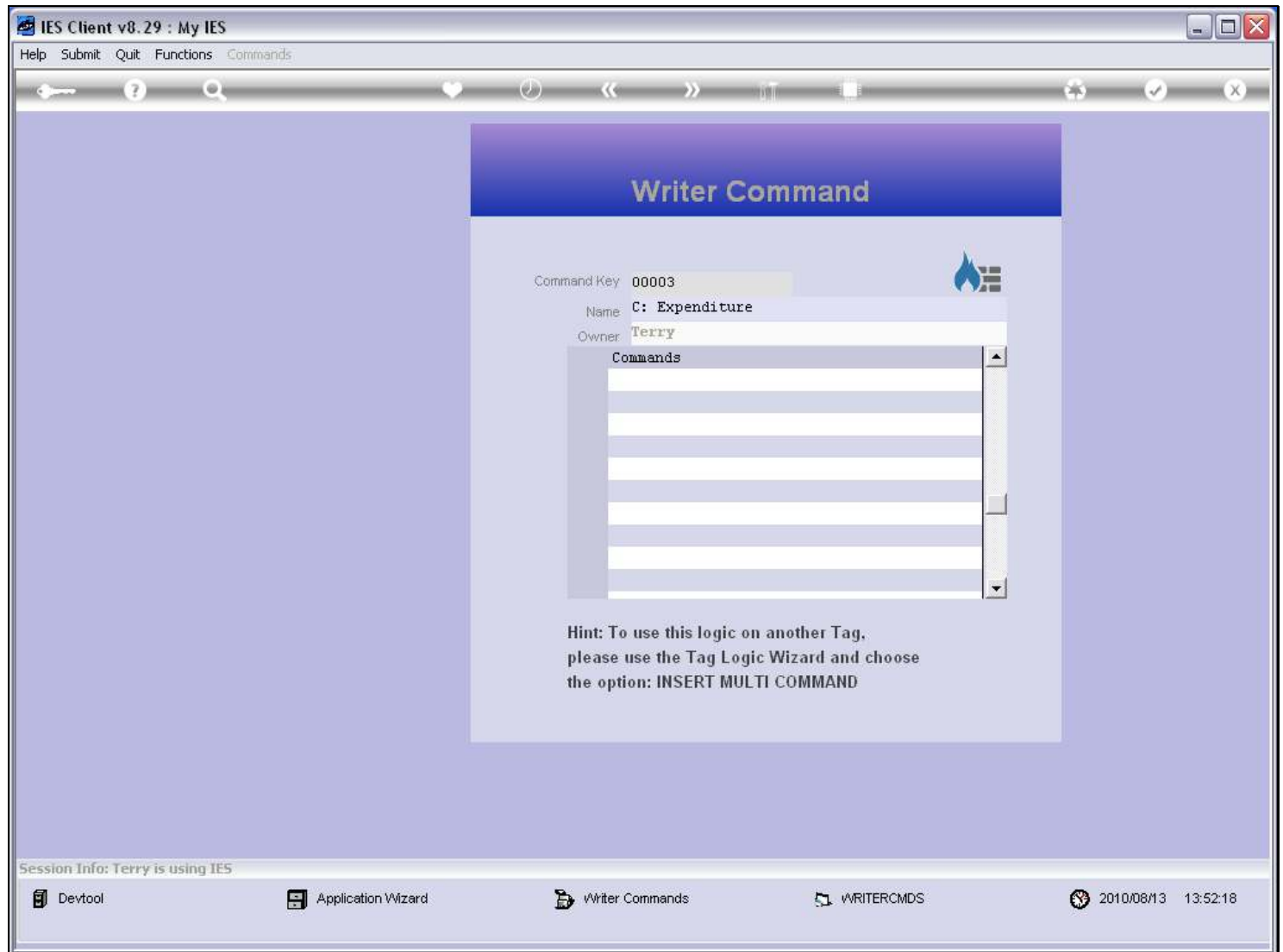
Slide 9 - Slide 9



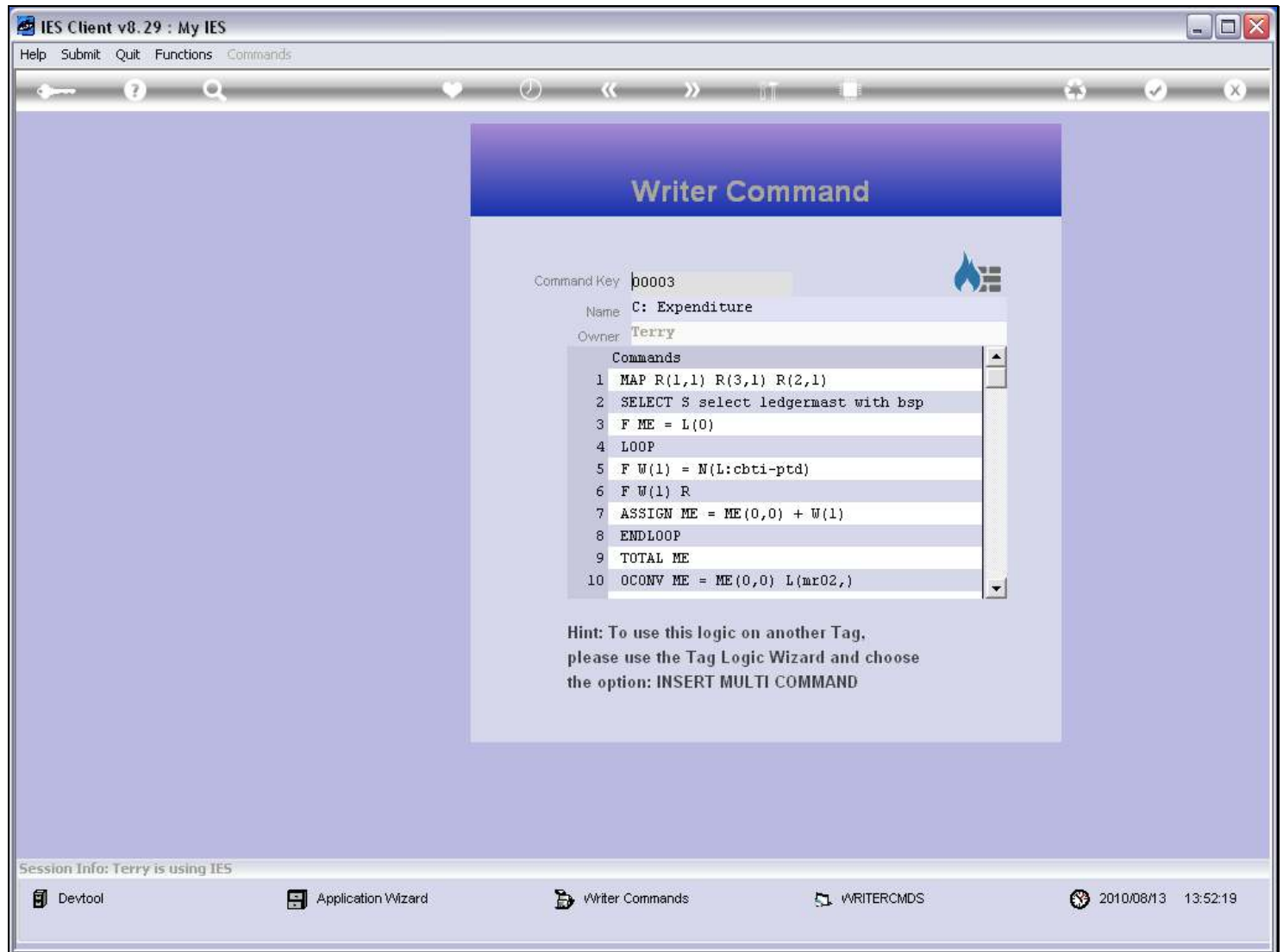
Slide notes

Slide 10 - Slide 10**Slide notes**

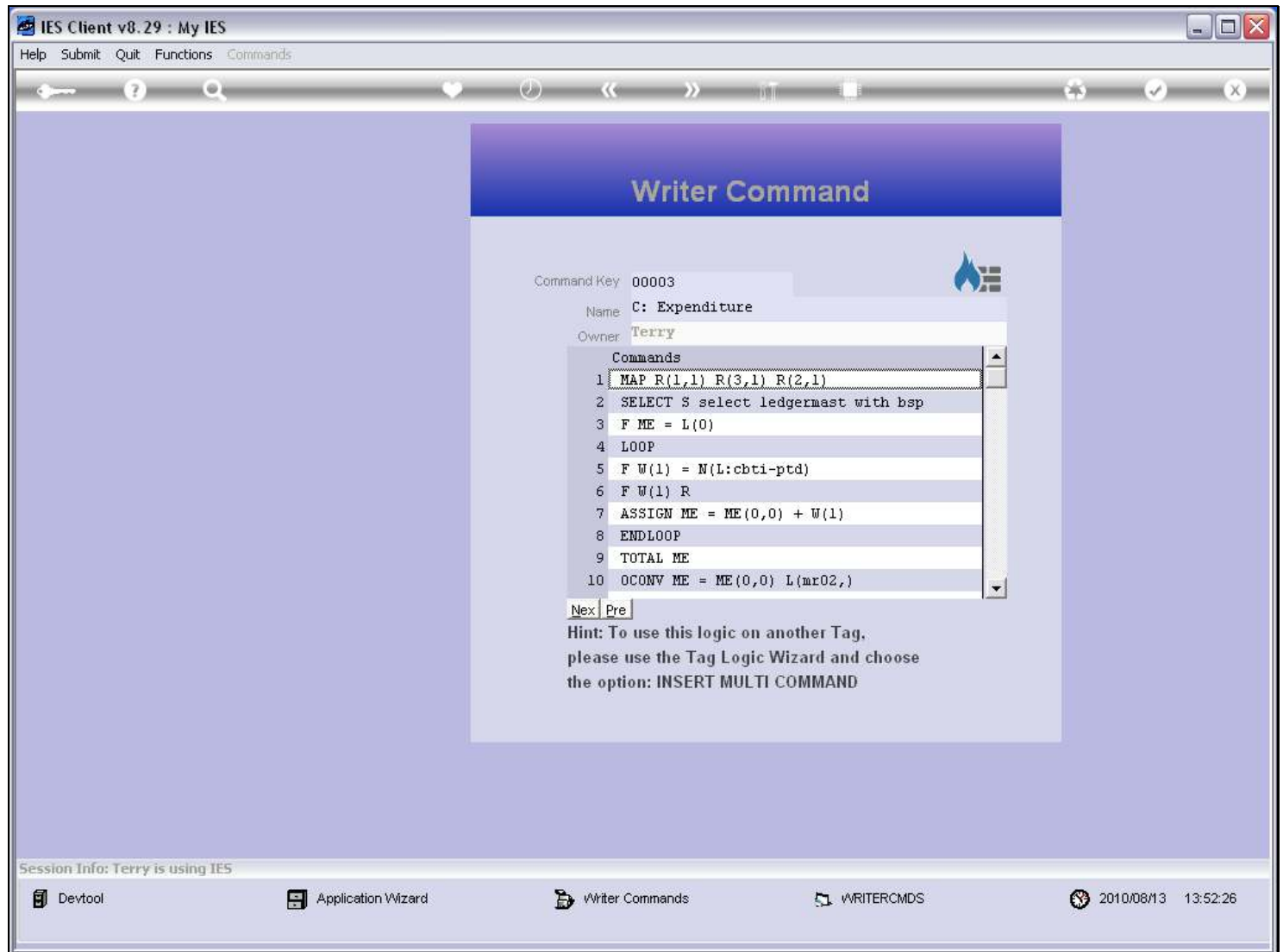
The Tag Logic, 1 Command per line, makes up the Writer Command, and we can use it on other Tags by importing it.

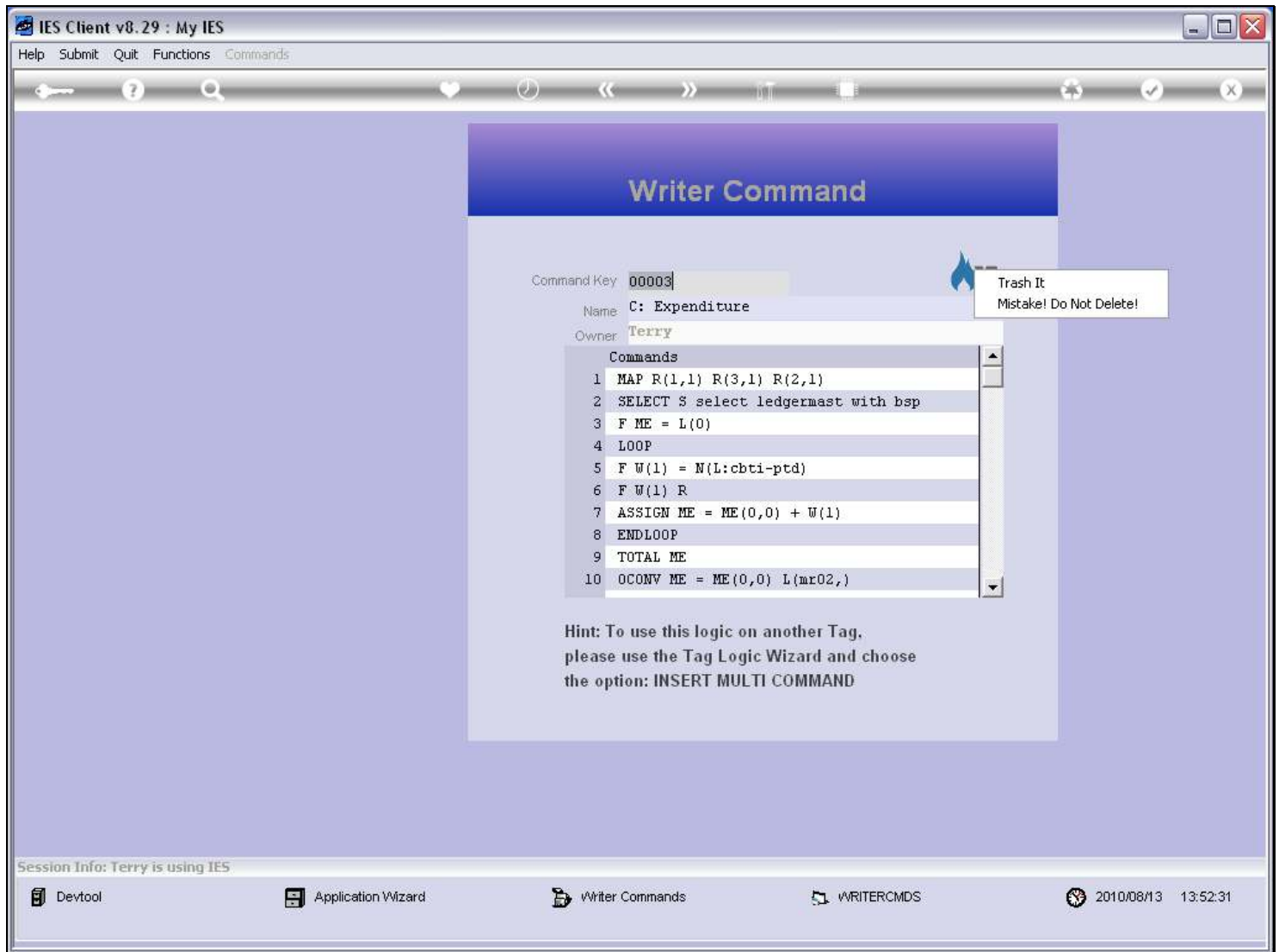
Slide 11 - Slide 11**Slide notes**

Slide 12 - Slide 12



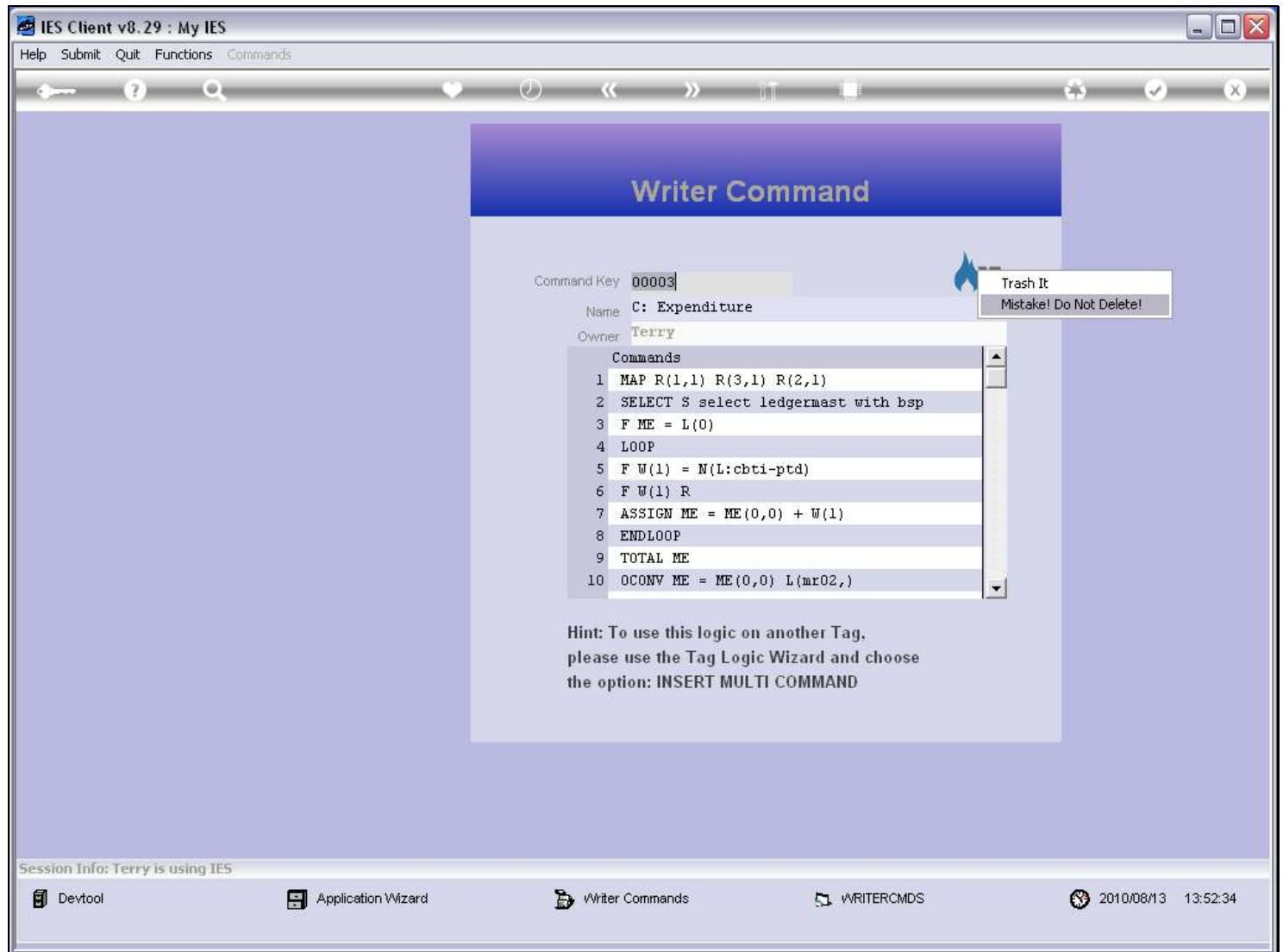
Slide notes

Slide 13 - Slide 13**Slide notes**

Slide 14 - Slide 14**Slide notes**

If we own a Writer Command, then we have the option to delete it also.

Slide 15 - Slide 15



Slide notes

Slide 16 - Slide 16

The screenshot shows the IES Client v8.29 interface. The title bar reads 'IES Client v8.29 : My IES'. The menu bar includes 'Help', 'Submit', 'Quit', 'Functions', and 'Commands'. The main window has a toolbar with icons for key, help, search, heart, clock, left arrow, right arrow, list, document, refresh, checkmark, and close. The central area displays a 'Writer Command' dialog box with a blue header. Inside the dialog, the 'Command Key' is '00003', the 'Name' is 'C: Expenditure', and the 'Owner' is 'Terry'. A list of commands is shown, numbered 1 to 10: 1. MAP R(1,1) R(3,1) R(2,1), 2. SELECT S select ledgermast with bsp, 3. F ME = L(0), 4. LOOP, 5. F W(1) = N(L:cbti-ptd), 6. F W(1) R, 7. ASSIGN ME = ME(0,0) + W(1), 8. ENDLLOOP, 9. TOTAL ME, 10. OCONV ME = ME(0,0) L(mr02,). Below the list are 'Nex' and 'Pre' buttons. A hint text reads: 'Hint: To use this logic on another Tag, please use the Tag Logic Wizard and choose the option: INSERT MULTI COMMAND'. The status bar at the bottom shows 'Session Info: Terry is using IES' and a taskbar with icons for Devtool, Application Wizard, Writer Commands, WRITERCMDS, and a clock showing 2010/08/13 13:52:34.

IES Client v8.29 : My IES

Help Submit Quit Functions Commands

Writer Command

Command Key 00003

Name C: Expenditure

Owner Terry

Commands

- 1 MAP R(1,1) R(3,1) R(2,1)
- 2 SELECT S select ledgermast with bsp
- 3 F ME = L(0)
- 4 LOOP
- 5 F W(1) = N(L:cbti-ptd)
- 6 F W(1) R
- 7 ASSIGN ME = ME(0,0) + W(1)
- 8 ENDLLOOP
- 9 TOTAL ME
- 10 OCONV ME = ME(0,0) L(mr02,)

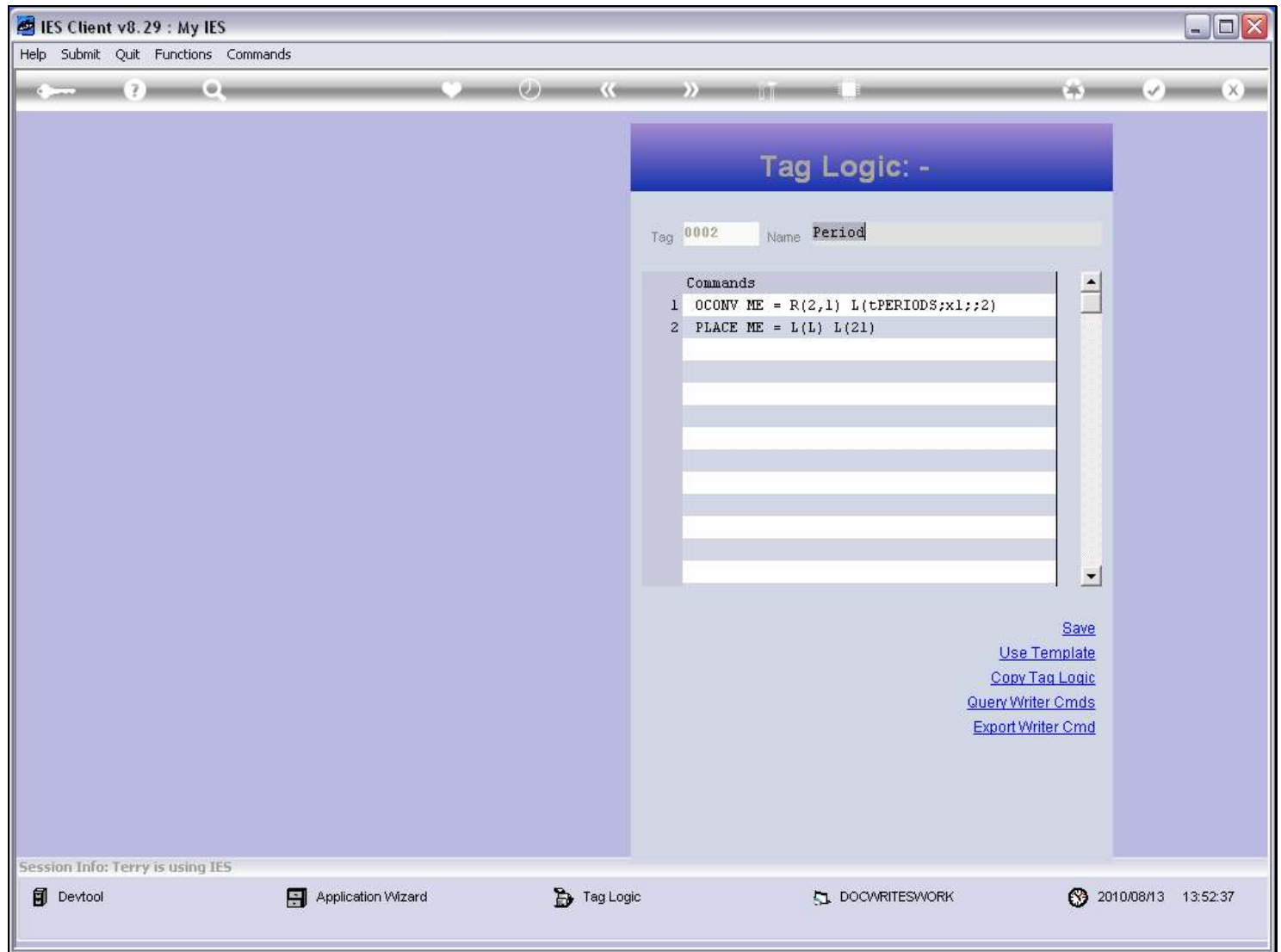
Nex Pre

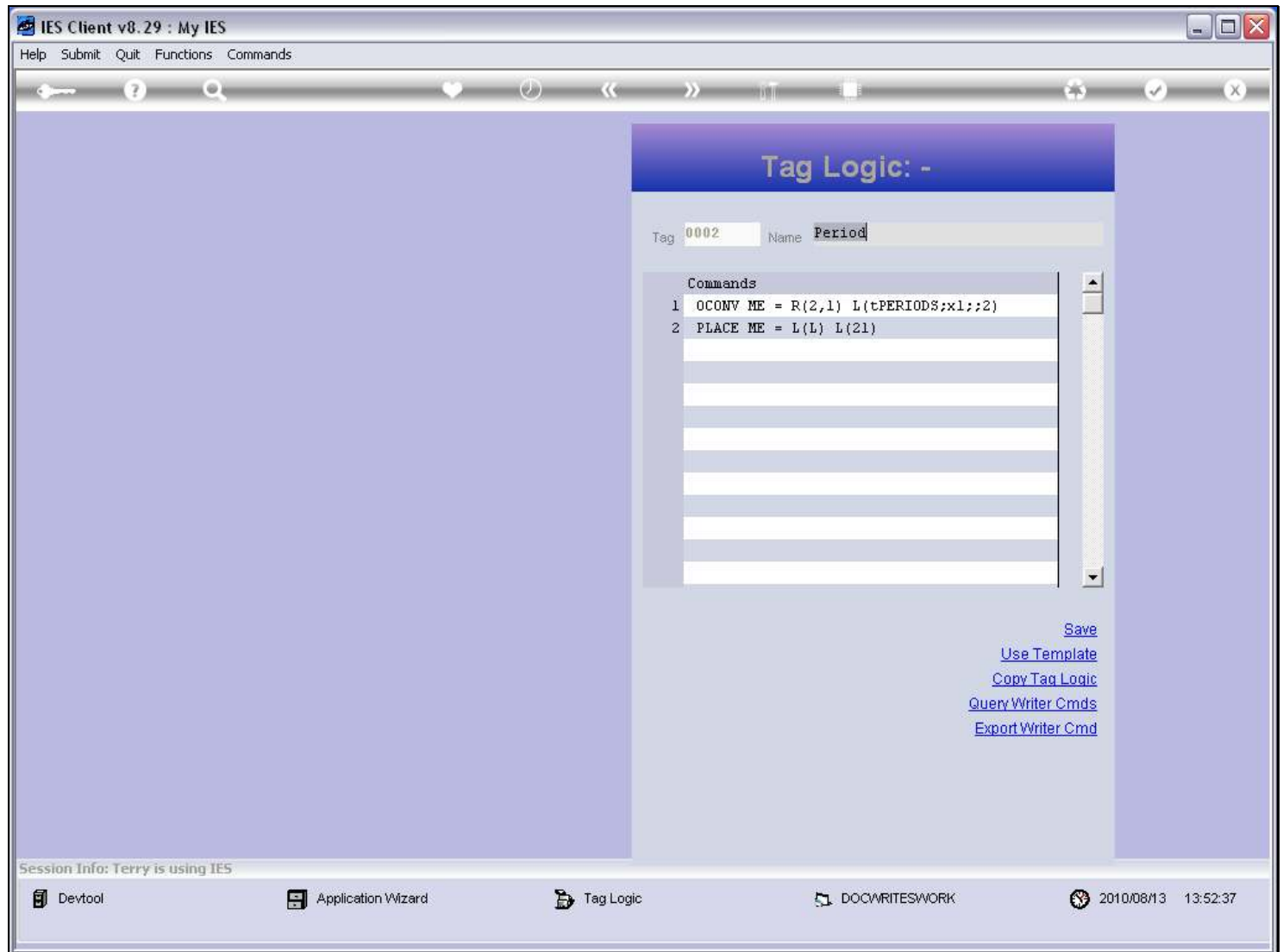
Hint: To use this logic on another Tag,
please use the Tag Logic Wizard and choose
the option: INSERT MULTI COMMAND

Session Info: Terry is using IES

Devtool Application Wizard Writer Commands WRITERCMDS 2010/08/13 13:52:34

Slide notes

Slide 17 - Slide 17**Slide notes**

Slide 18 - Slide 18**Slide notes**