

Slide 1 - Slide 1

IES Client v8.29 : My IES

Help Submit Quit Functions Commands

1 Console

2 Pre Run

3 The Tags

4 Options

Tag Result Macros: -

>>> Tags	Value Names	Exec It
1 0001	Co Name	1
2 0002	Period	1
3 0014	Stock Sales: Cur	1
4 0015	Stock Sales: Bud	1
5 0016	Stock Sales: YTD	1
6 0017	Stock Sales: YTD Bud	1
7 0018	Stock Sales: Ann Bud	1
8 0019	Interest Received: Cur	1
9 0020	Interest Received: Bud	1
10 0021	Interest Received: YTD	1
11 0022	Interest Received: YTD Bud	1
12 0023	Interest Received: Ann Bud	1
13 0024	Tot Revenue: Cur	1
14 0025	Tot Revenue: Bud	1
15 0026	Tot Revenue: YTD	1
16 0027	Tot Revenue: YTD Bud	1
17 0028	Tot Revenue: Ann Bud	1
18 0029	Rent: Cur	1
19 0030	Rent: Bud	1
20 0031	Rent: YTD	1
21 0032	Rent: YTD Bud	1
22 0033	Rent: Ann Bud	1
23 0034	Bad Debts: Cur	1
24 0035	Bad Debts: Bud	1
25 0036	Bad Debts: YTD	1

Nex

Pre

Add

Ins

Ed

Del

Where is that tag !

Select from Tag List

Search for Tag Number

Search for Tag Name

Current Tag Focus: -

Row

2

Tag #

0002

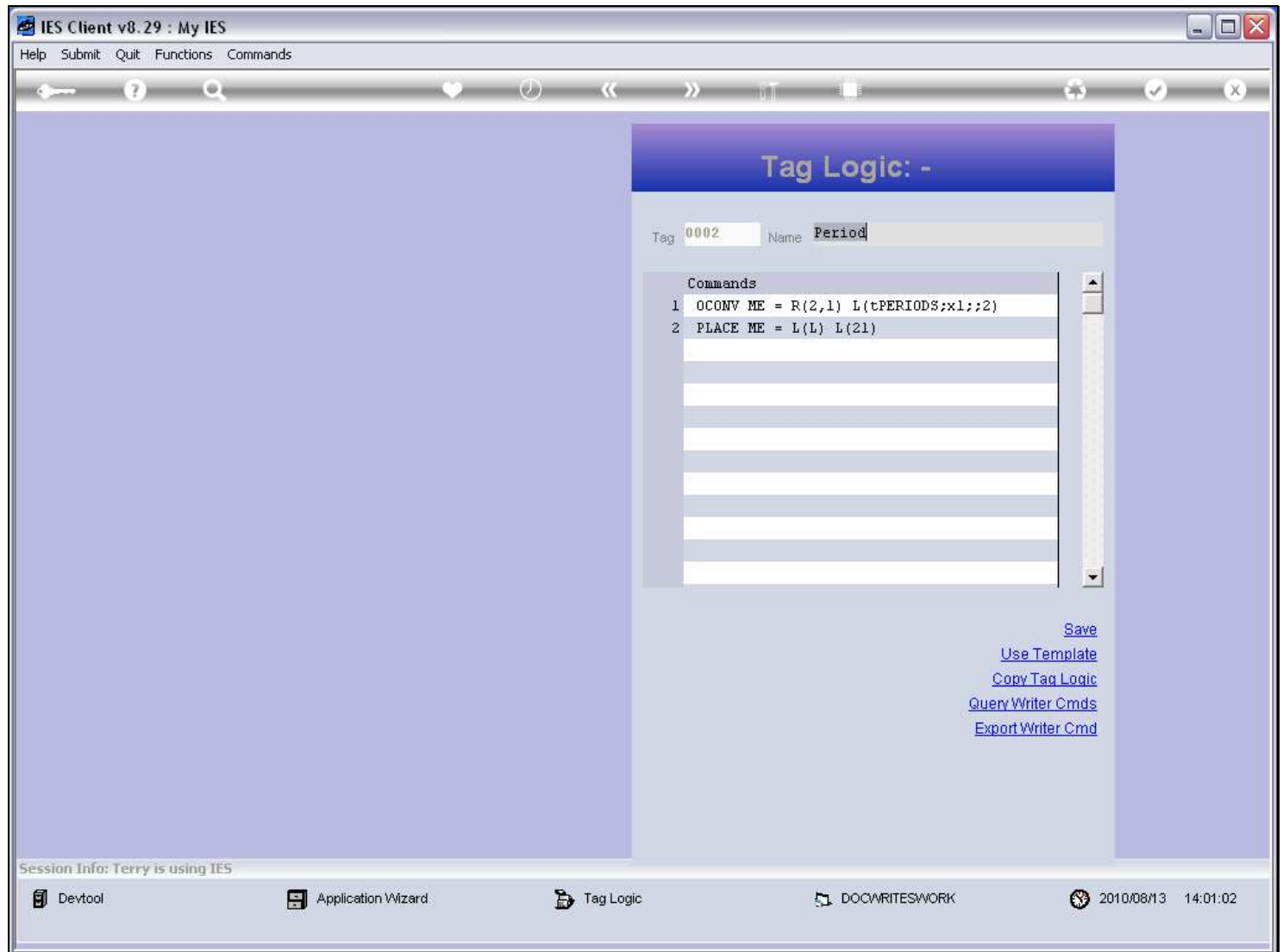
Name

Period

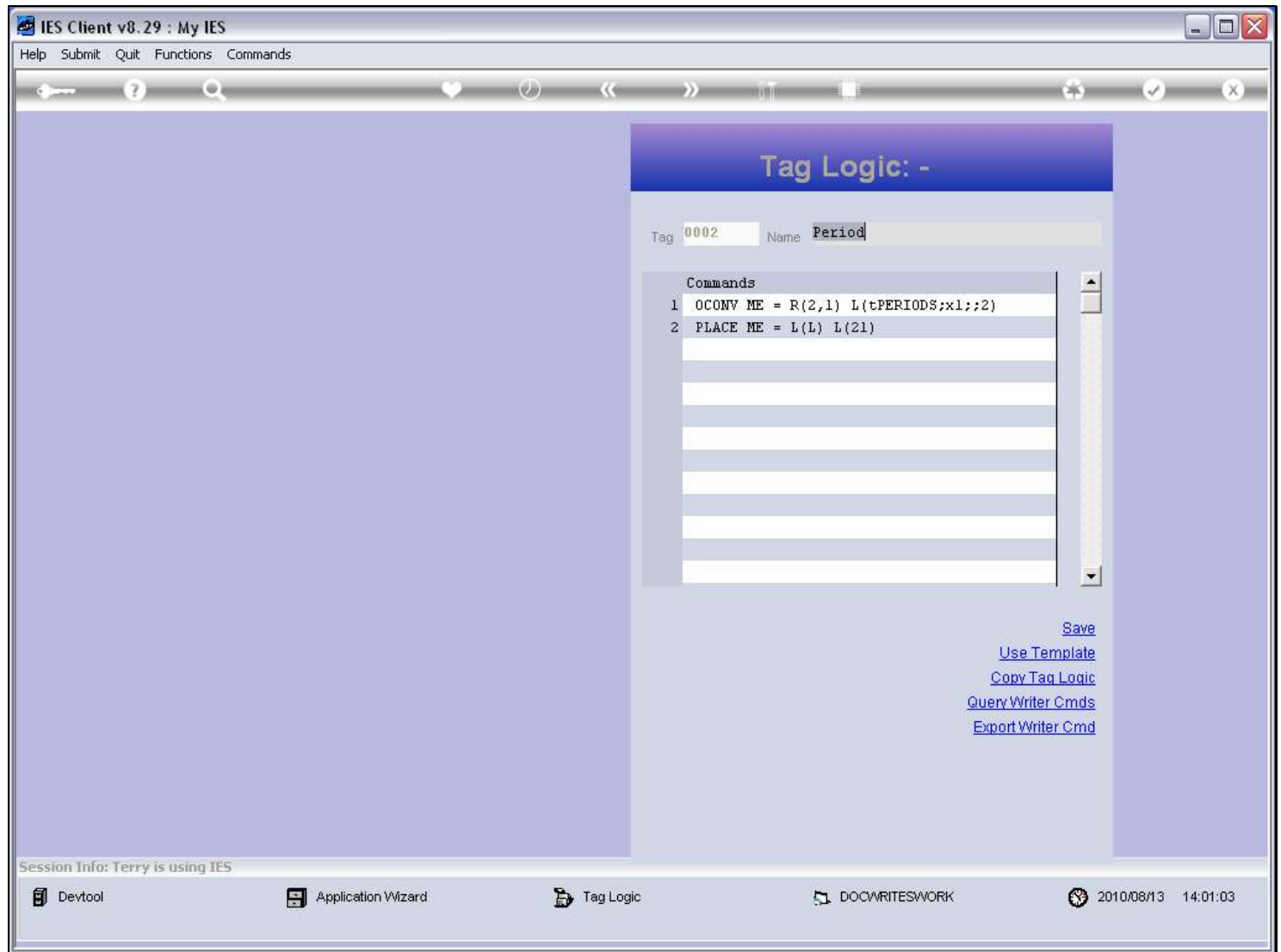
Open the Tag Macro

Slide notes

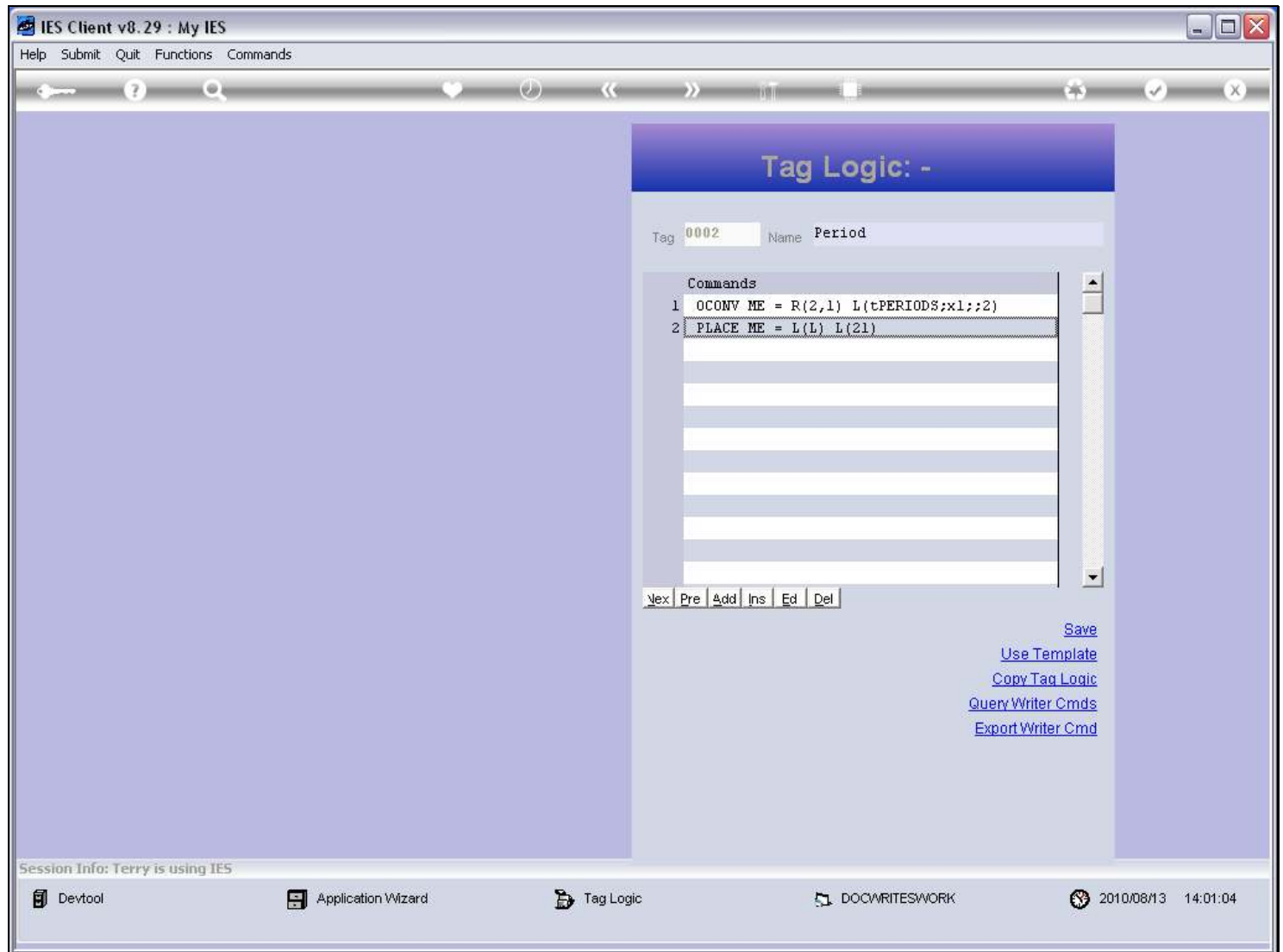
We will now see how to 'export' Writer Commands.

Slide 2 - Slide 2**Slide notes**

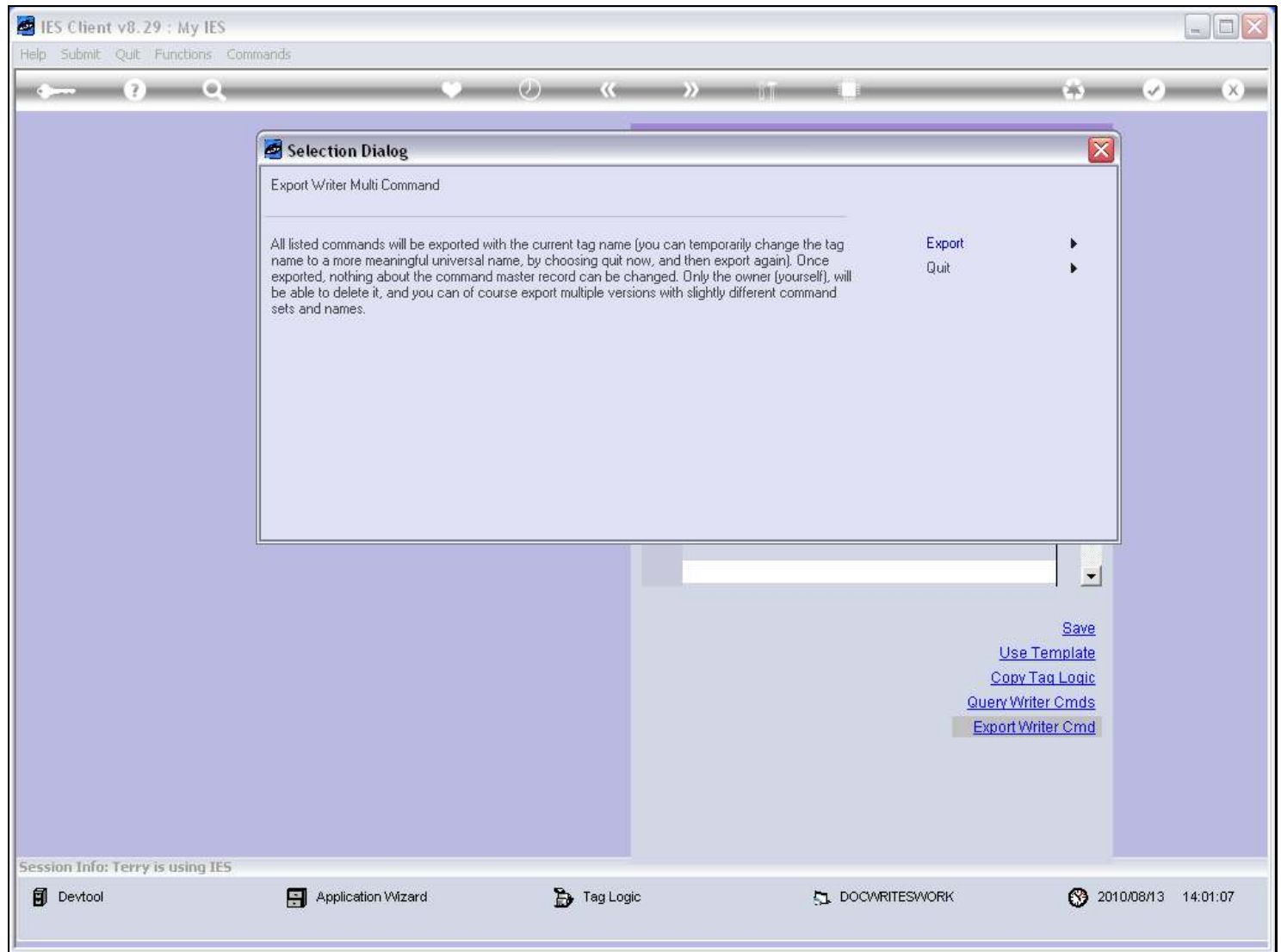
Writer Commands are stored Macros of Tag Logic, and we can only access them at Tags where we use Raw Macros, i.e. not Tag Templates.

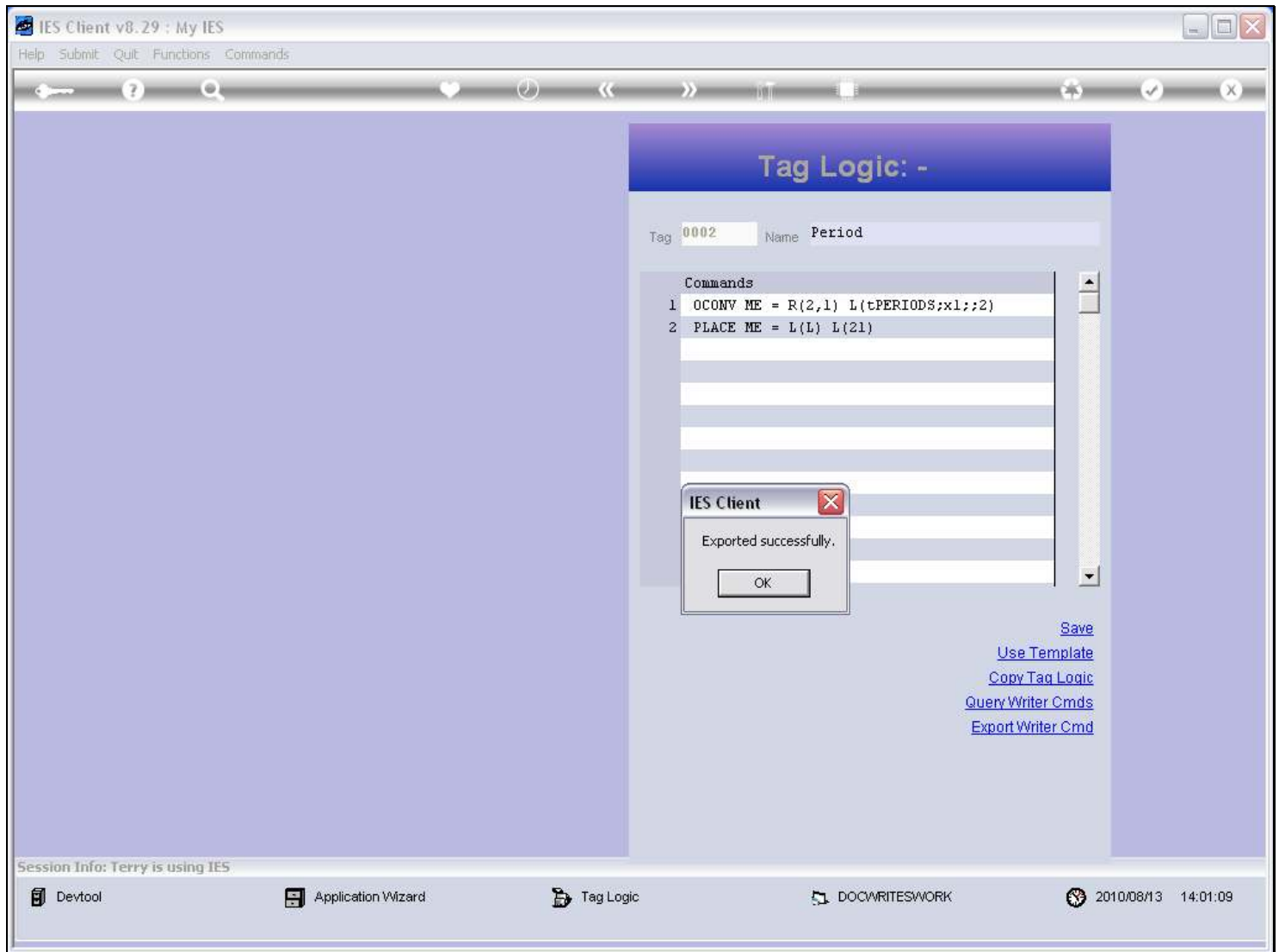
Slide 3 - Slide 3**Slide notes**

This is the current Tag Logic, and each Line is a Pseudo Command. The Tag Logic can be exported and then becomes a Writer Command that we can import into any other Tag Logic in any Report where we need to use it. Sometimes, Tag Logic can be a challenge to get right, and once we have the Tag Logic for some result working well, and especially if it has potential for re-use, then it is a good idea to export it as a Writer Command.

Slide 4 - Slide 4**Slide notes**

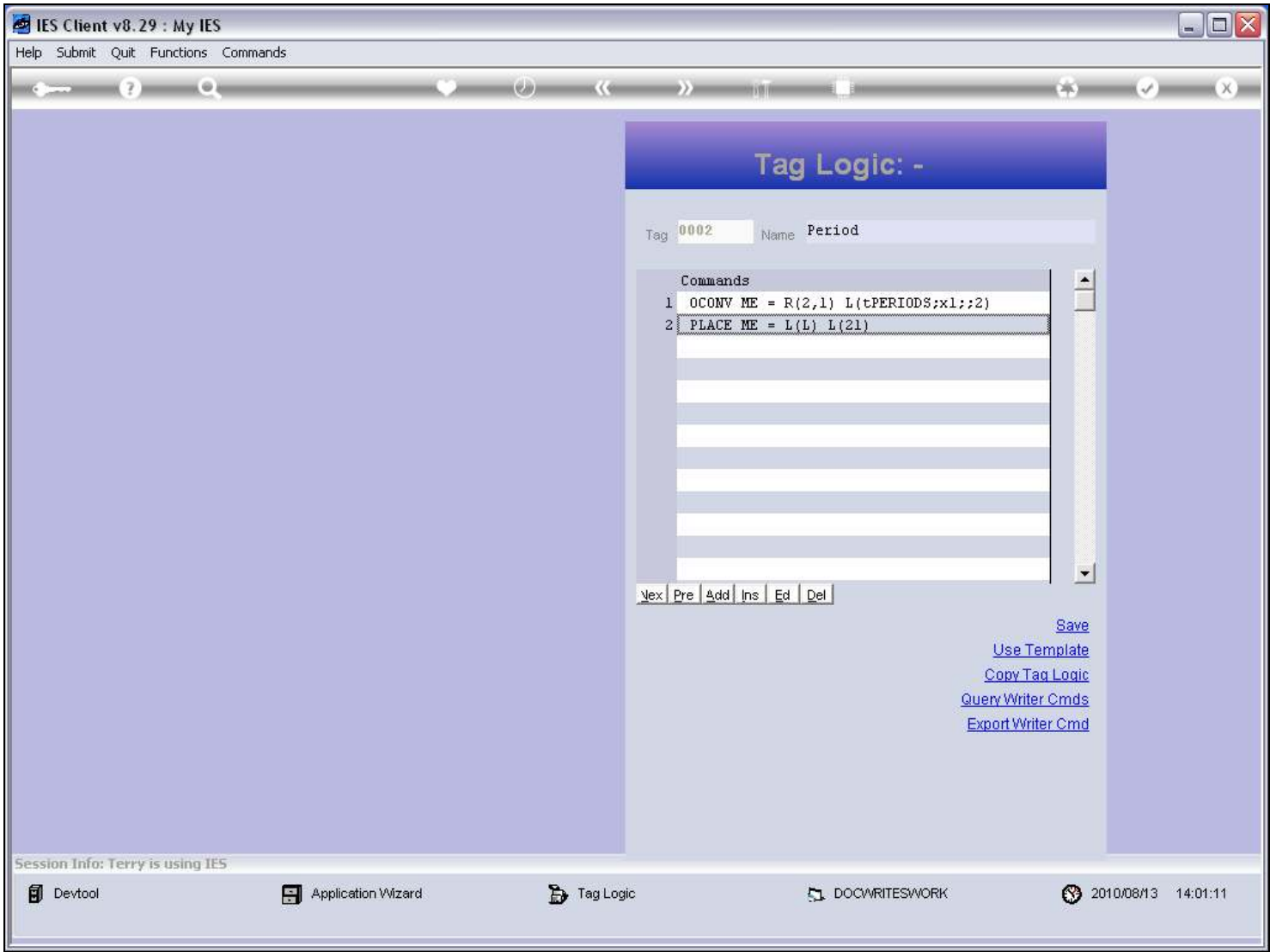
The 'Export' option is listed below the Tag Logic.

Slide 5 - Slide 5**Slide notes**

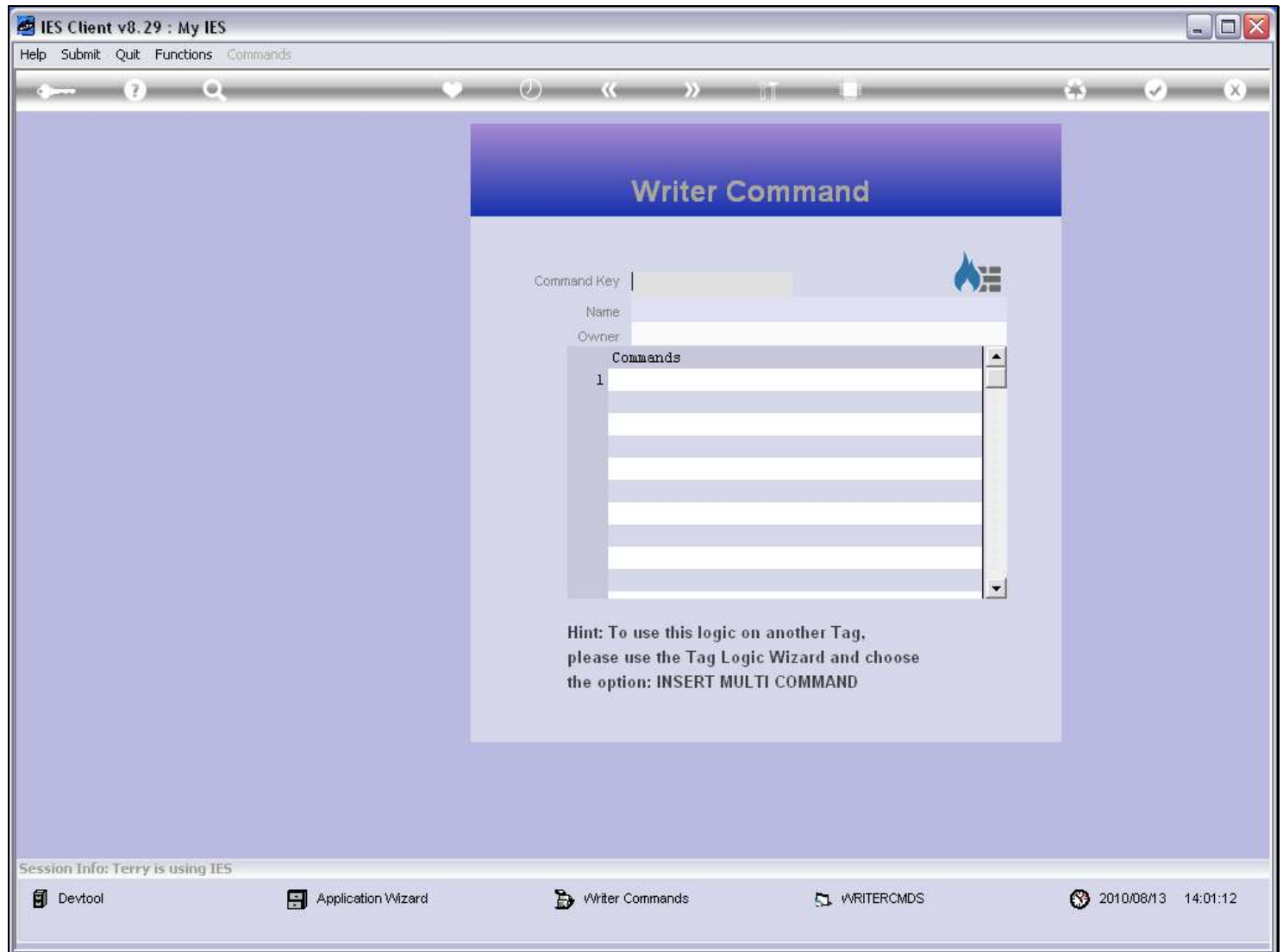
Slide 6 - Slide 6**Slide notes**

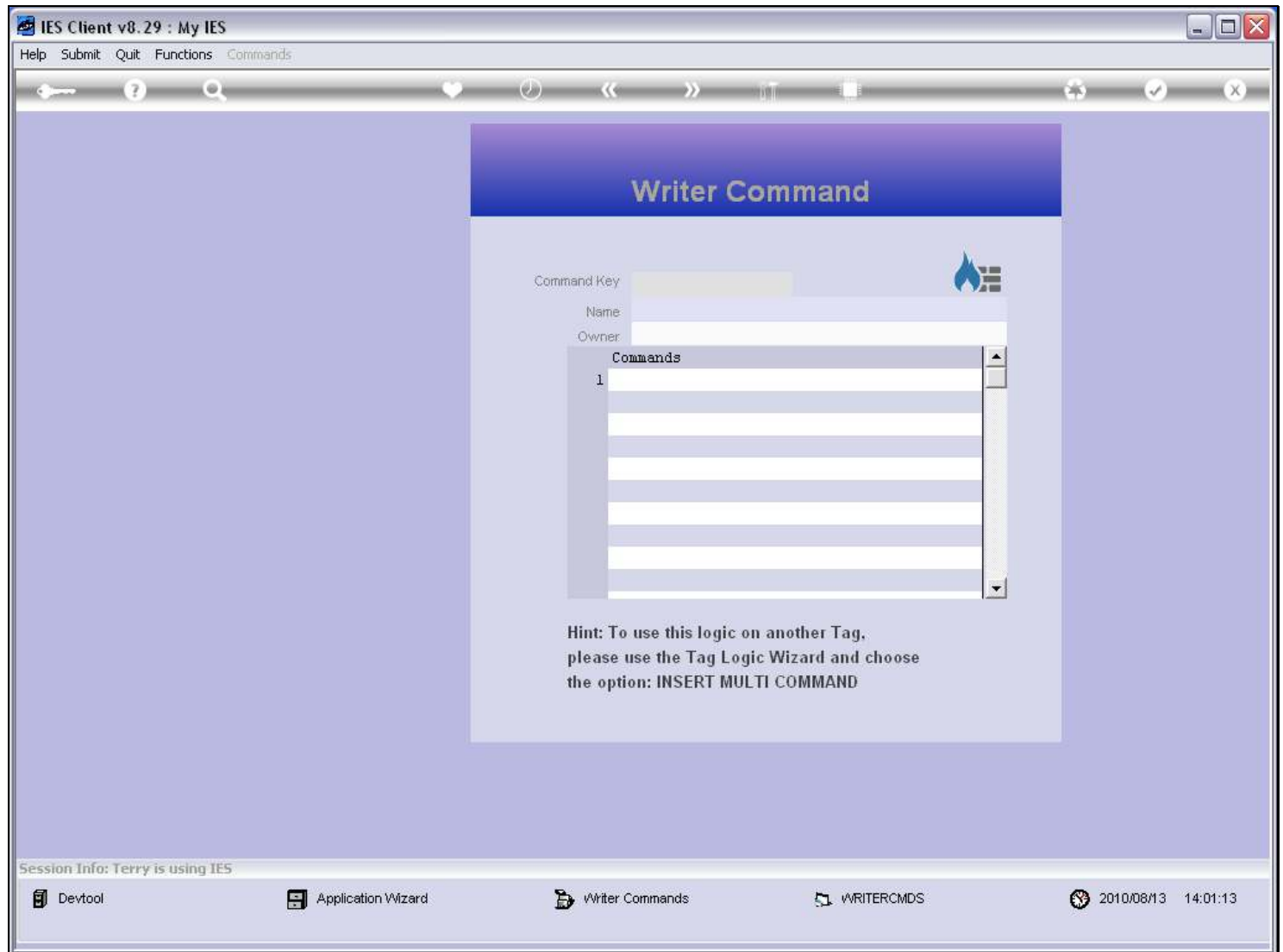
The Writer Command has been successfully exported, and we will just do a quick Query to show that it is in the Library for Writer Commands now.

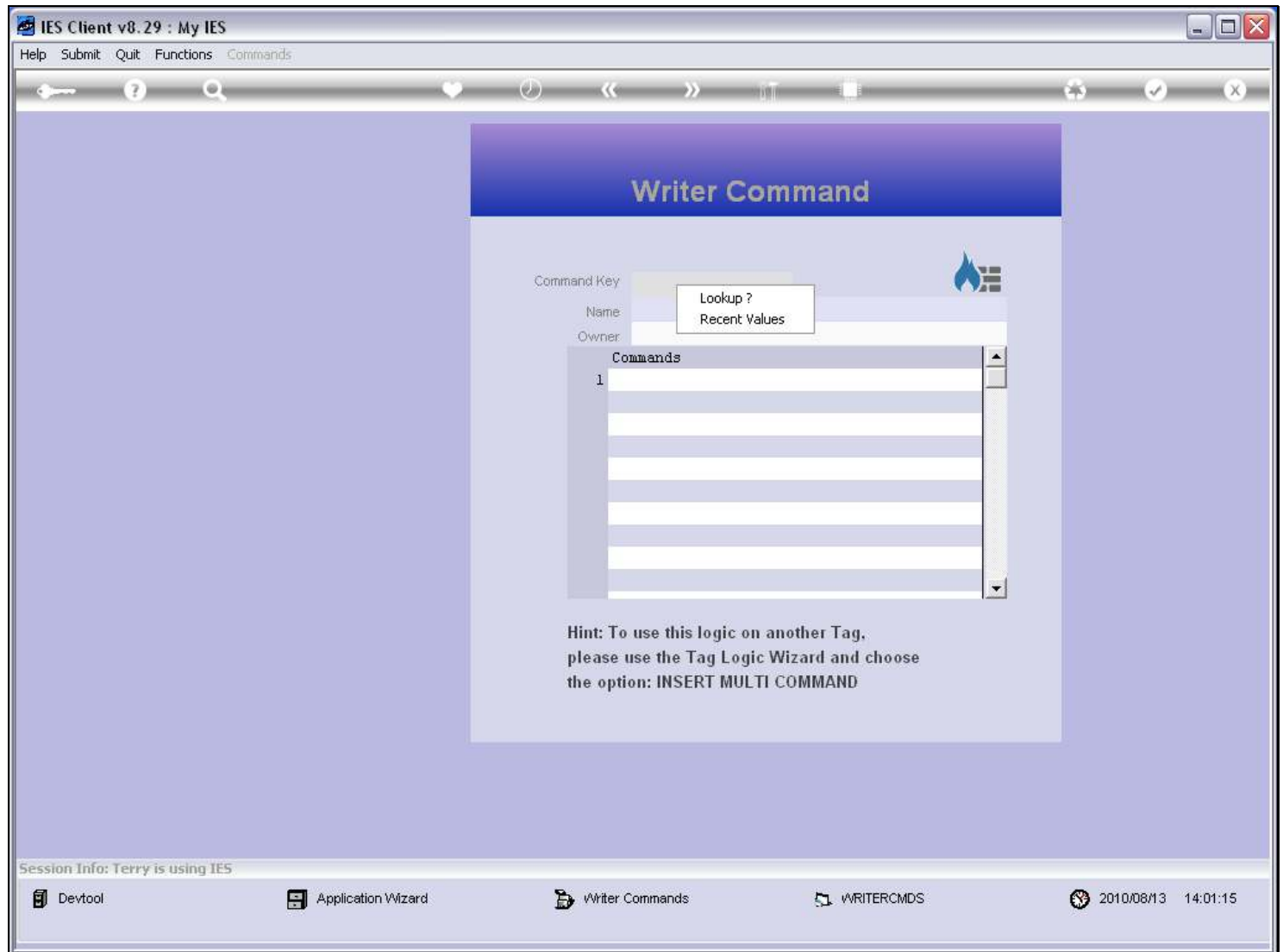
Slide 7 - Slide 7



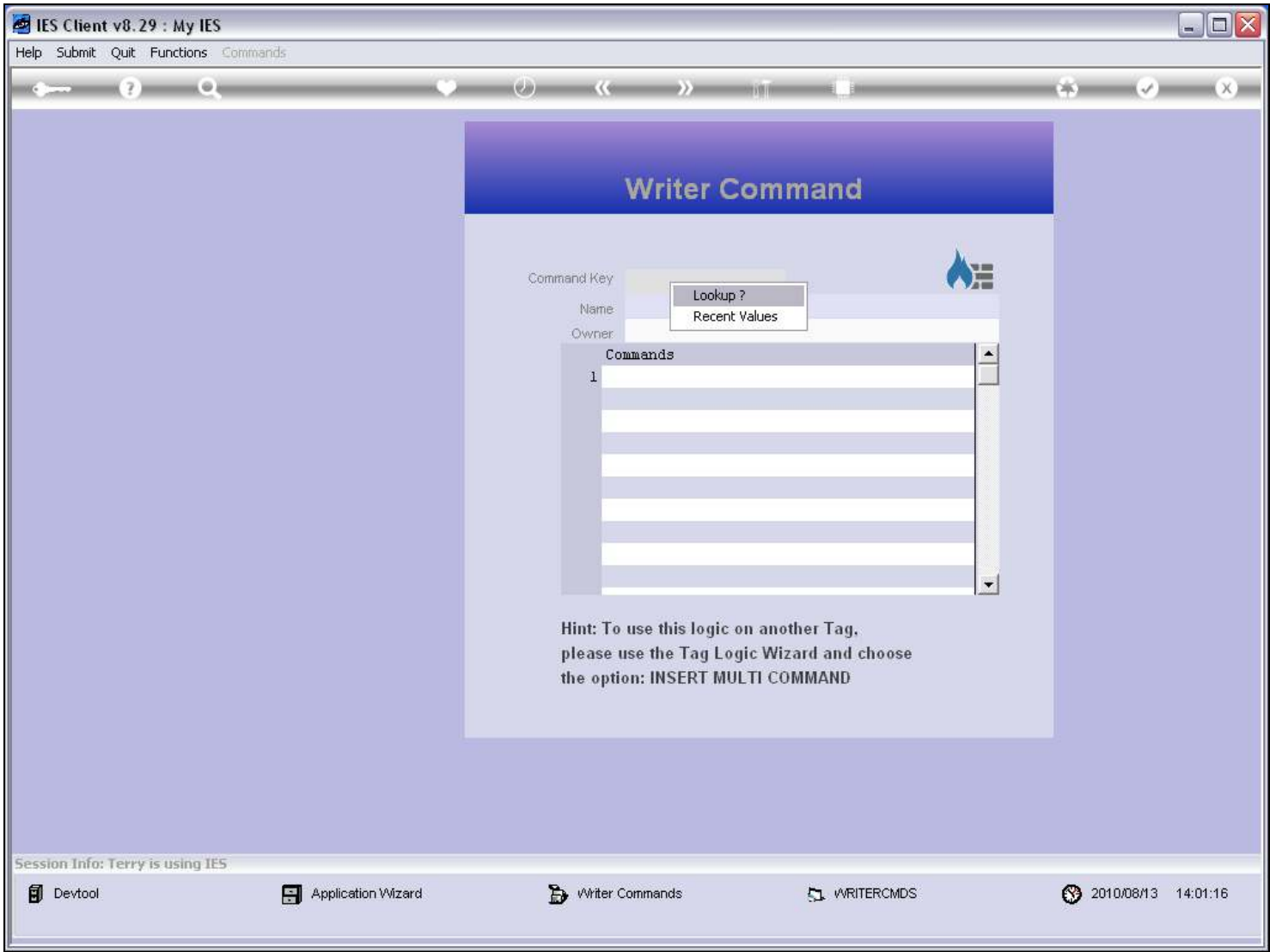
Slide notes

Slide 8 - Slide 8**Slide notes**

Slide 9 - Slide 9**Slide notes**

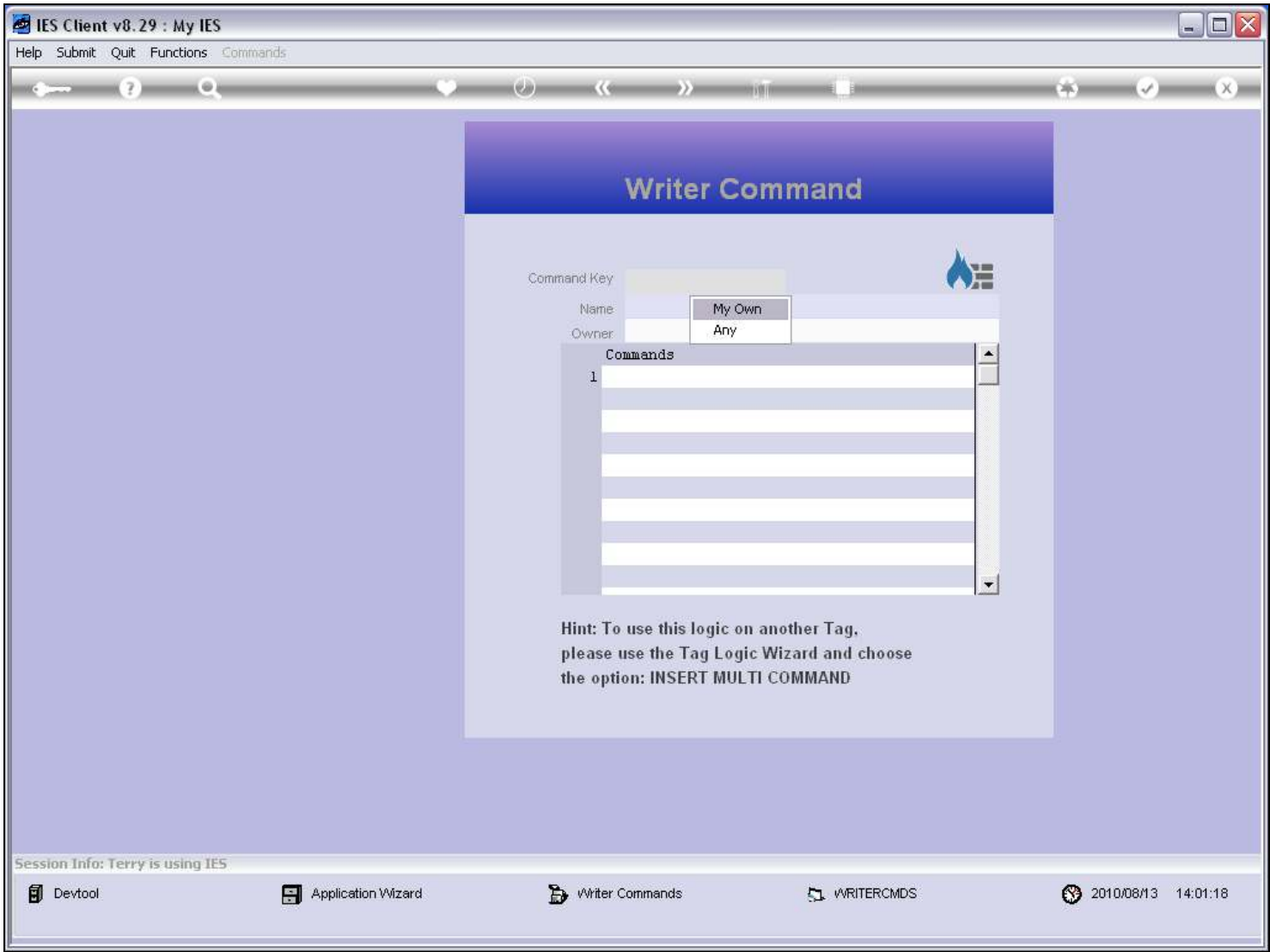
Slide 10 - Slide 10**Slide notes**

Slide 11 - Slide 11



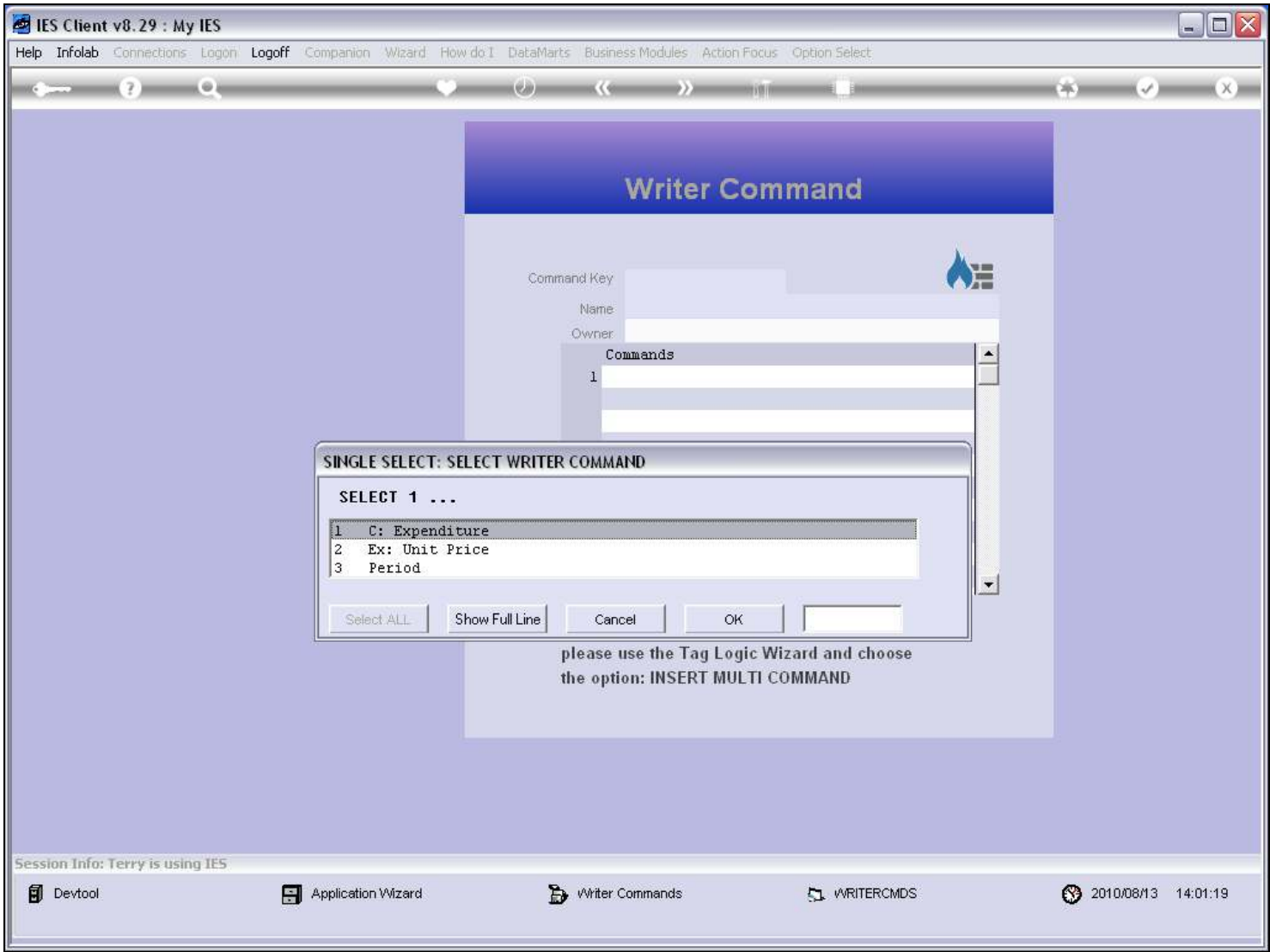
Slide notes

Slide 12 - Slide 12



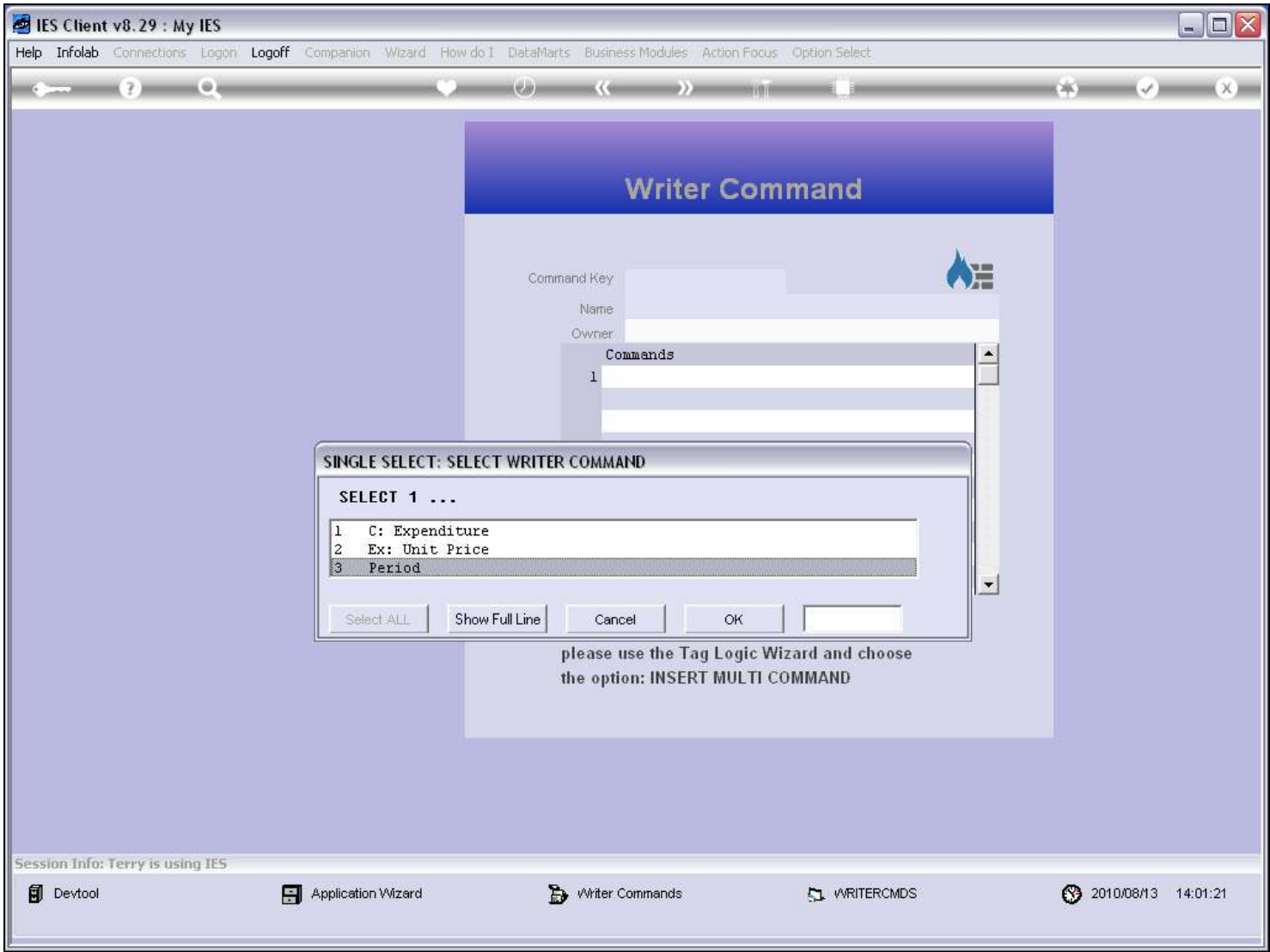
Slide notes

Slide 13 - Slide 13

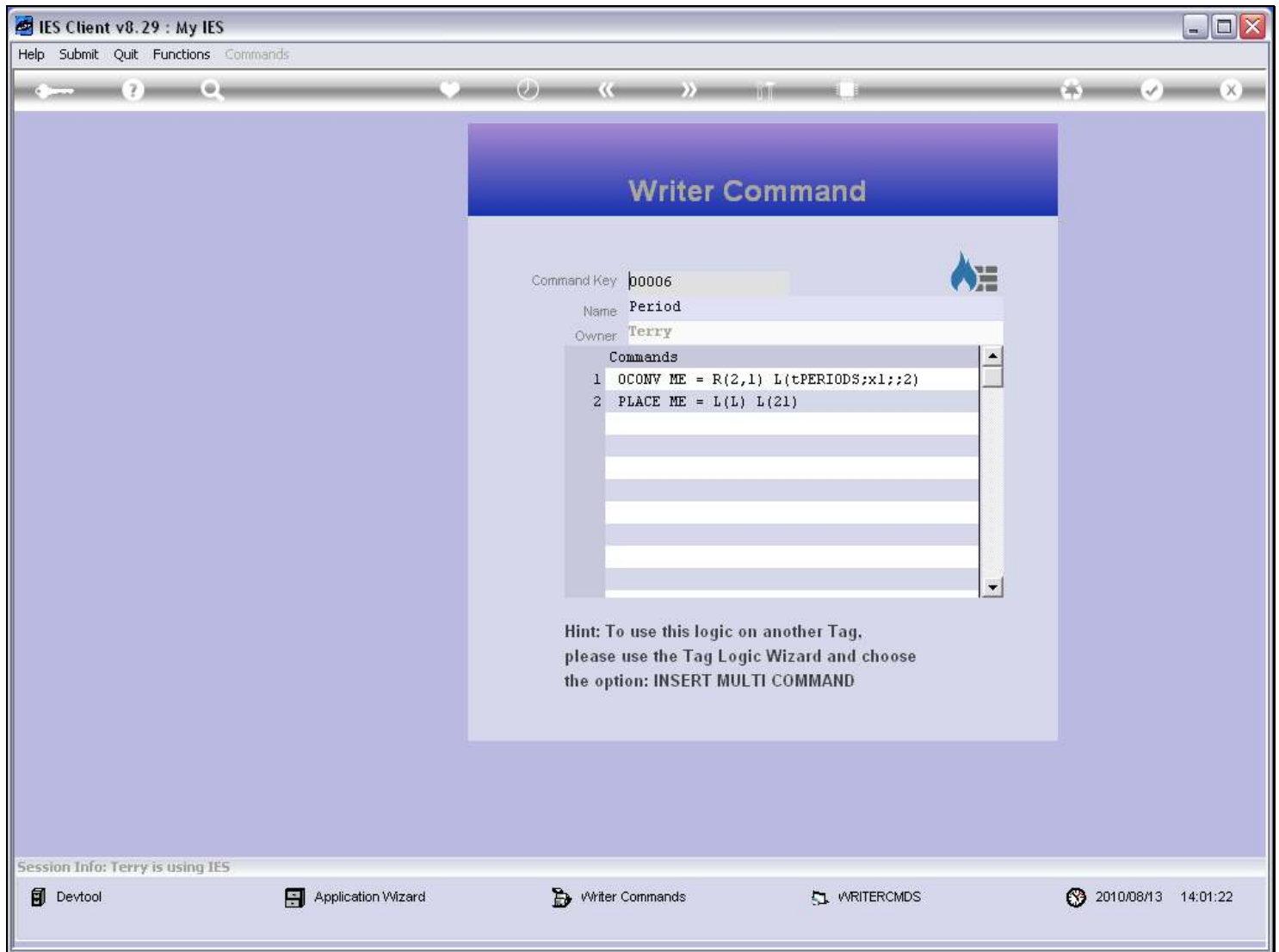


Slide notes

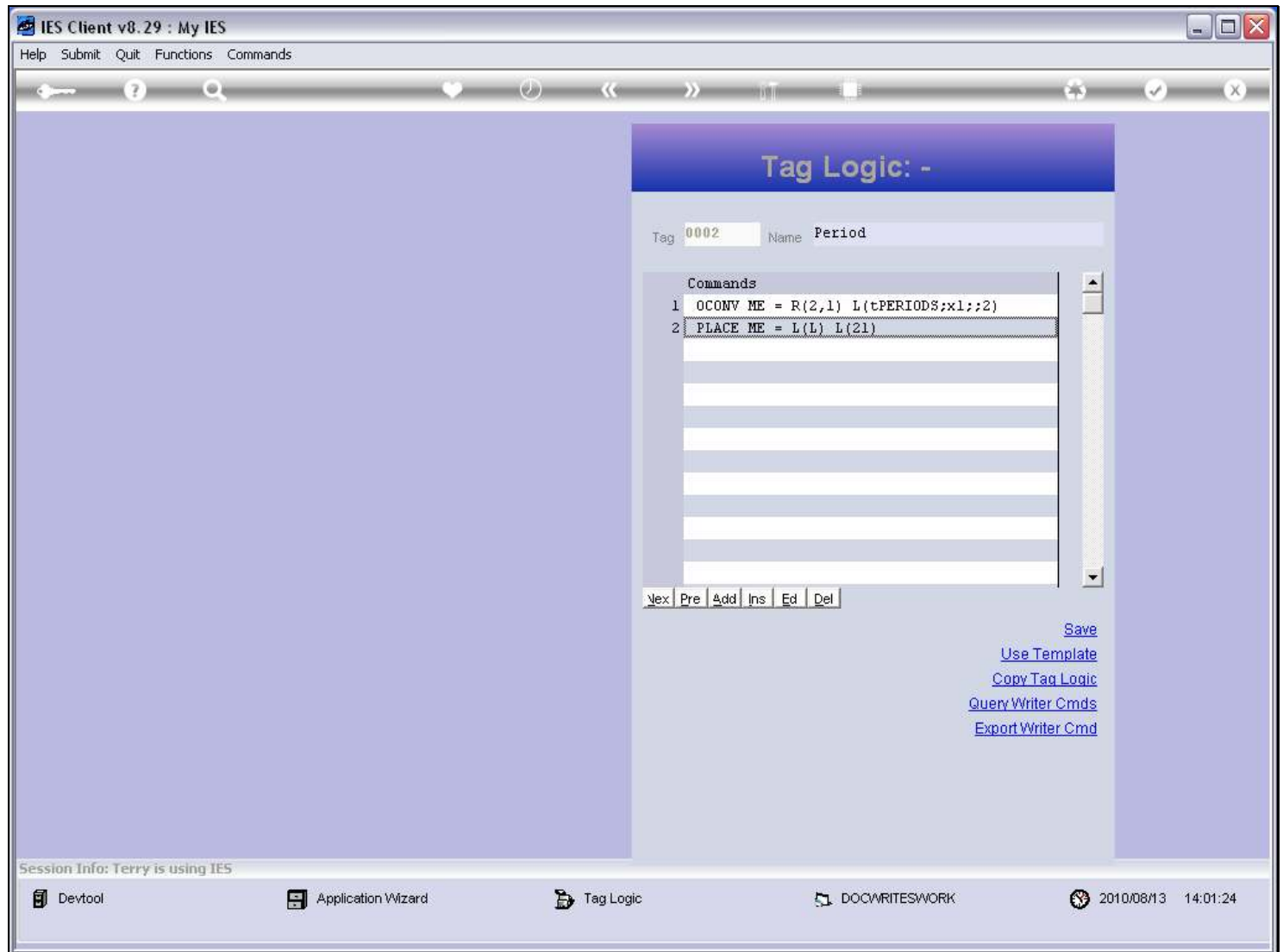
Slide 14 - Slide 14

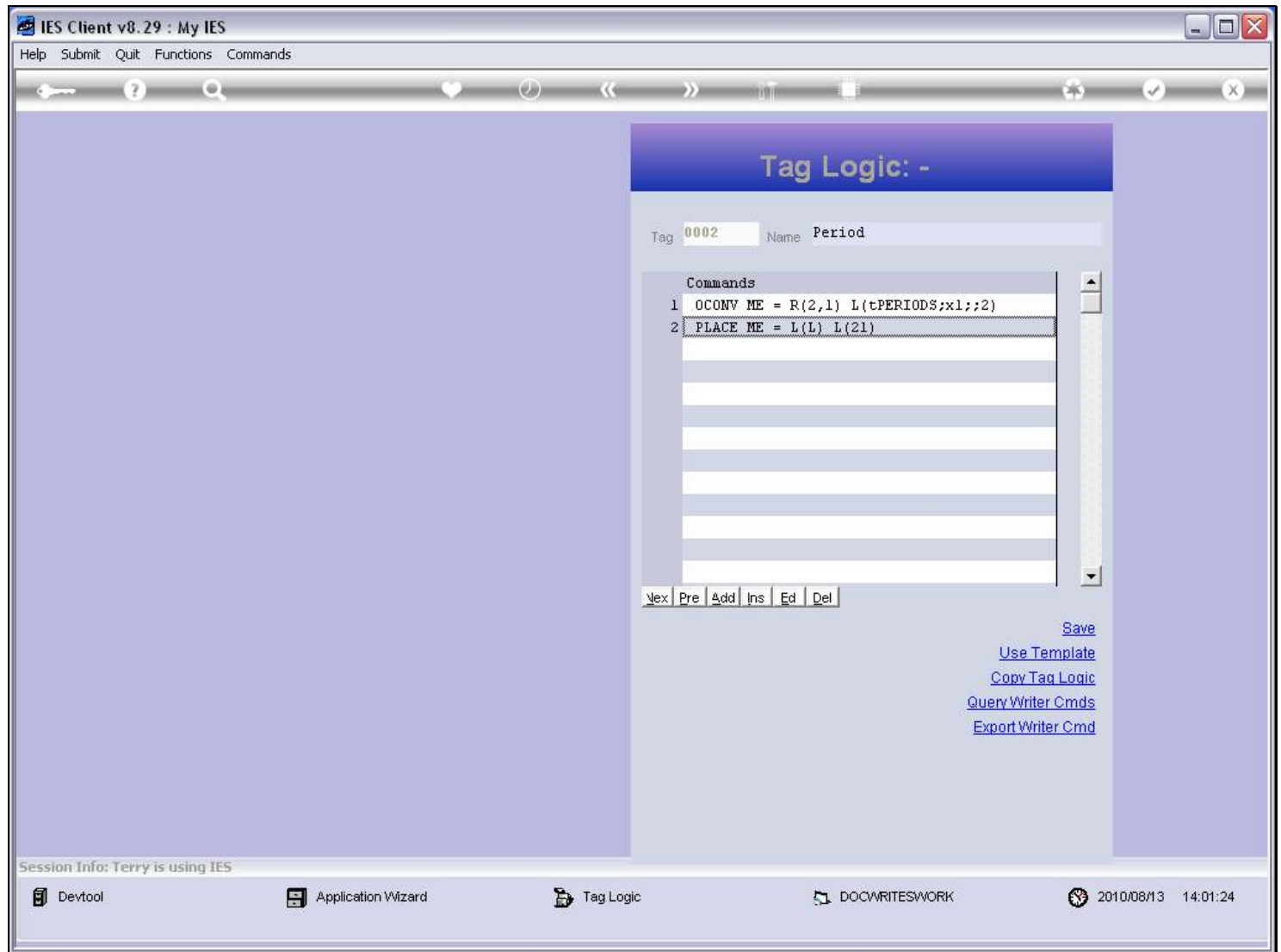


Slide notes

Slide 15 - Slide 15**Slide notes**

And here it is.

Slide 16 - Slide 16**Slide notes**

Slide 17 - Slide 17**Slide notes**

There is no time limitation on when a Writer Command can be exported. So, if we realize at any time that Command Logic for a certain Tag in a new Report is similar to what we have used elsewhere before, then we can open that Report, export the Writer Command, return to our new Report, and import the Tag Logic from the Writer Command.