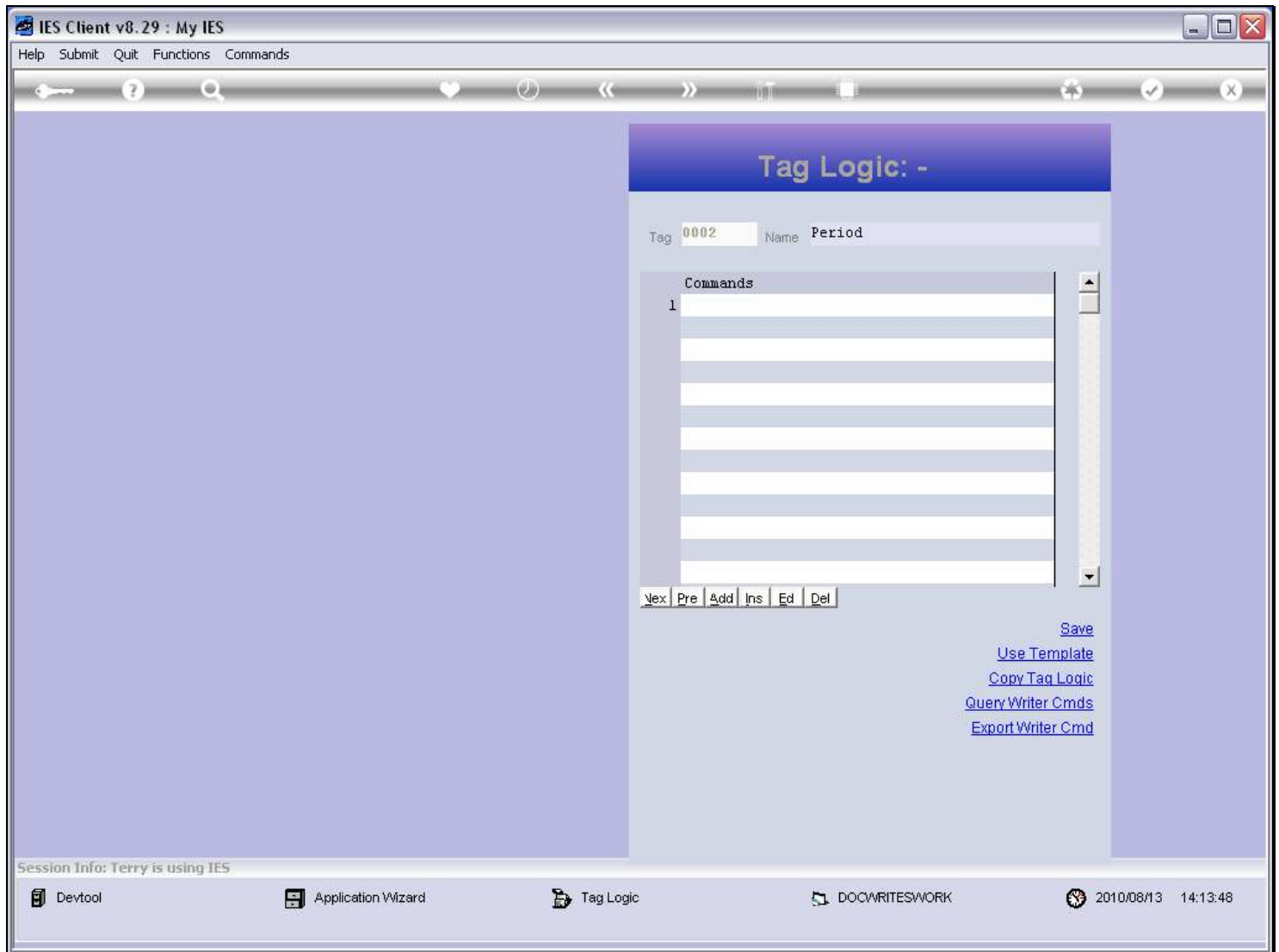
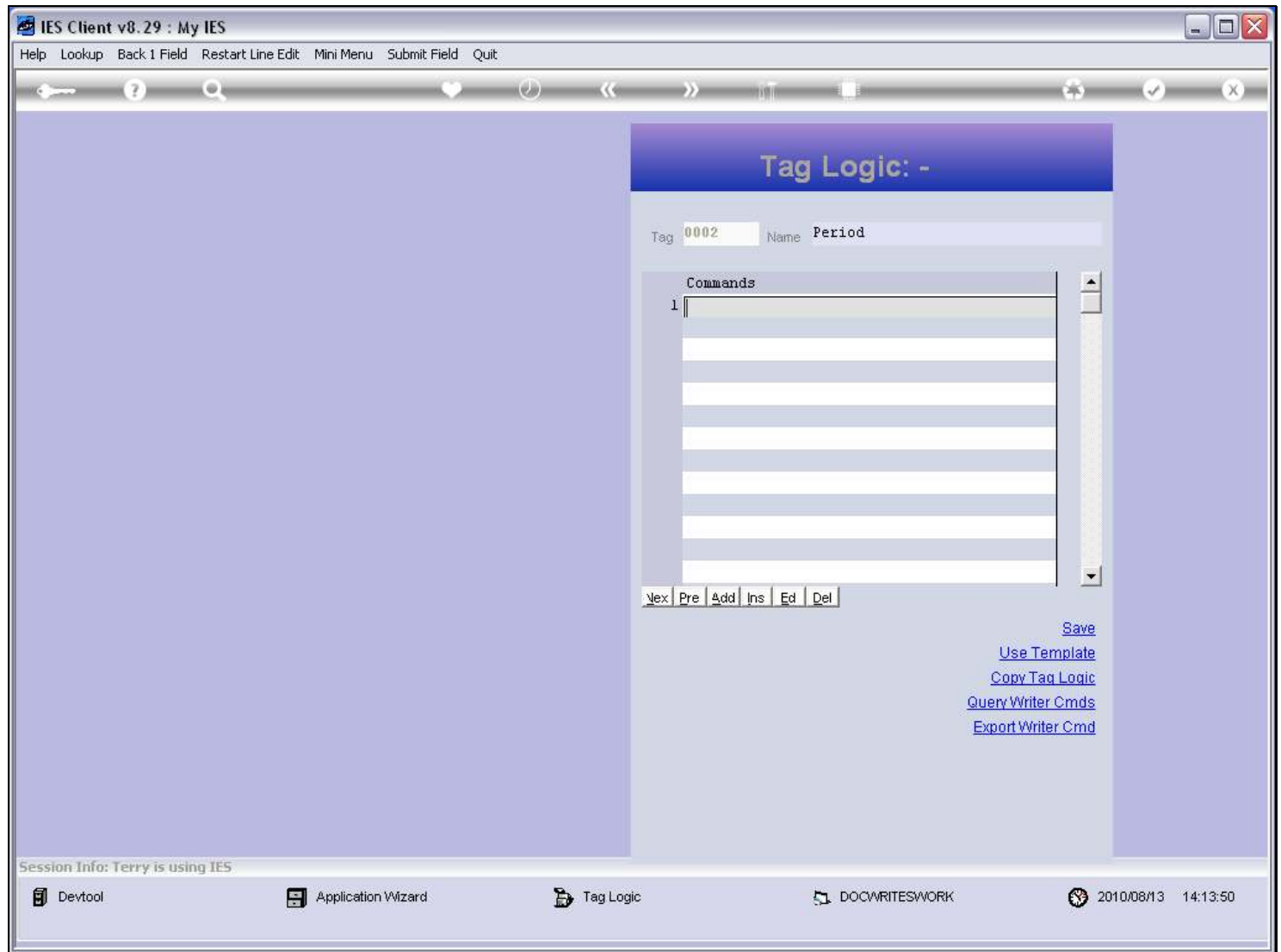


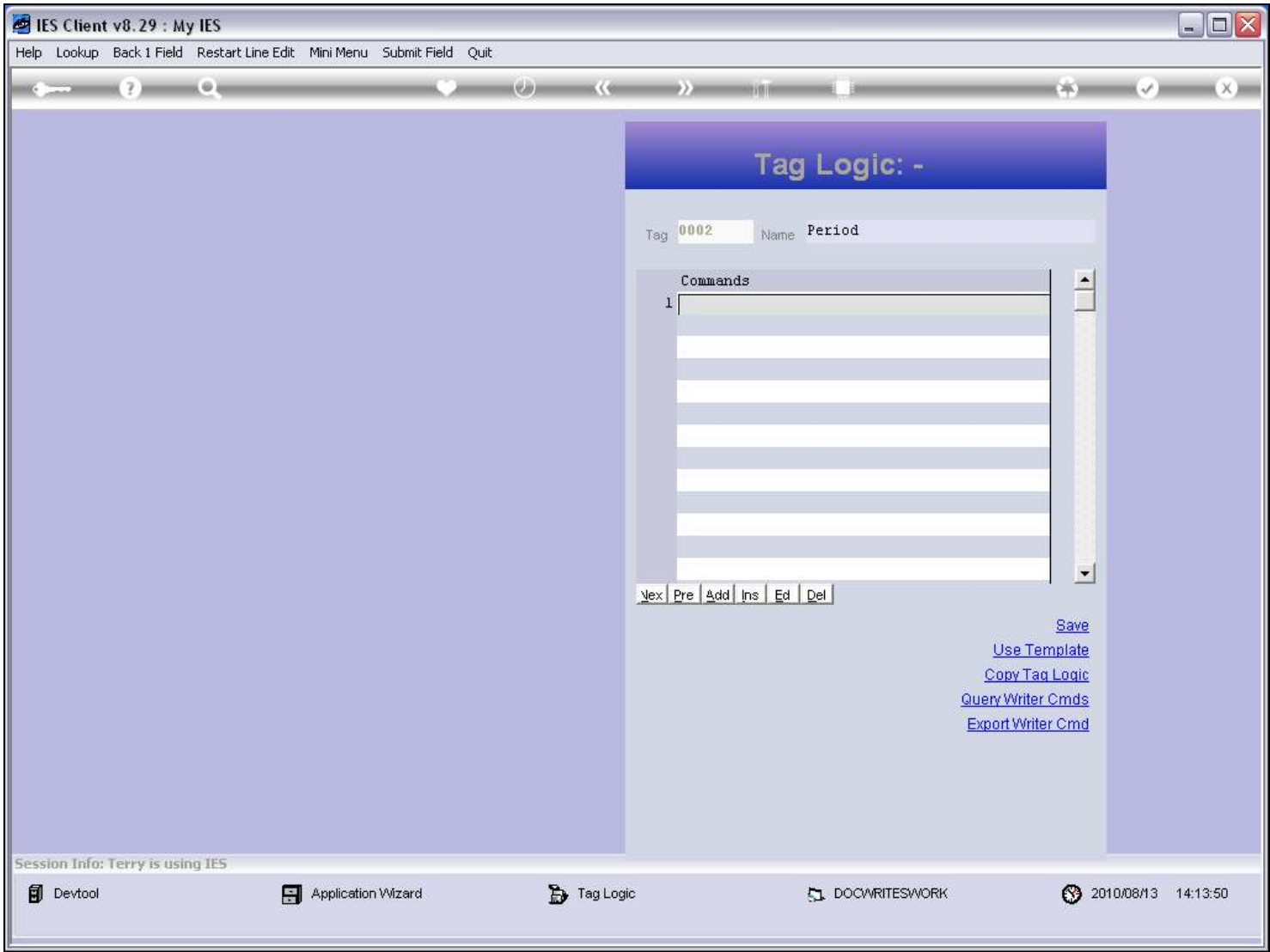
Slide 1 - Slide 1**Slide notes**

We are now going to IMPORT a Writer Command. A Writer Command is nothing other than a Tag Logic Macro that was created before and exported so that it can be used again by importing it.

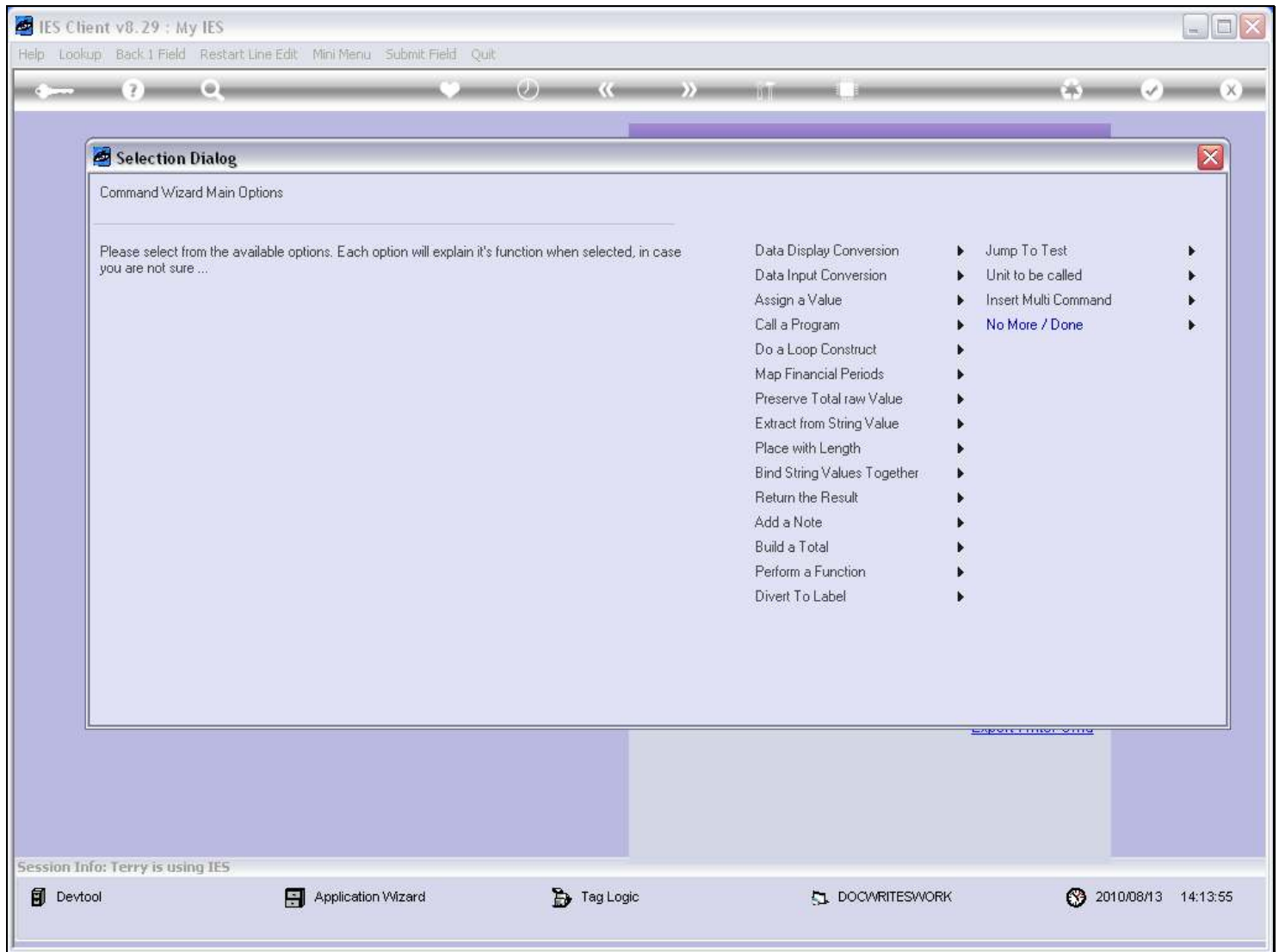
Slide 2 - Slide 2**Slide notes**

When we are working with raw macro lines, we can at any time type "w" and press ENTER to activate the Macro Wizard.

Slide 3 - Slide 3

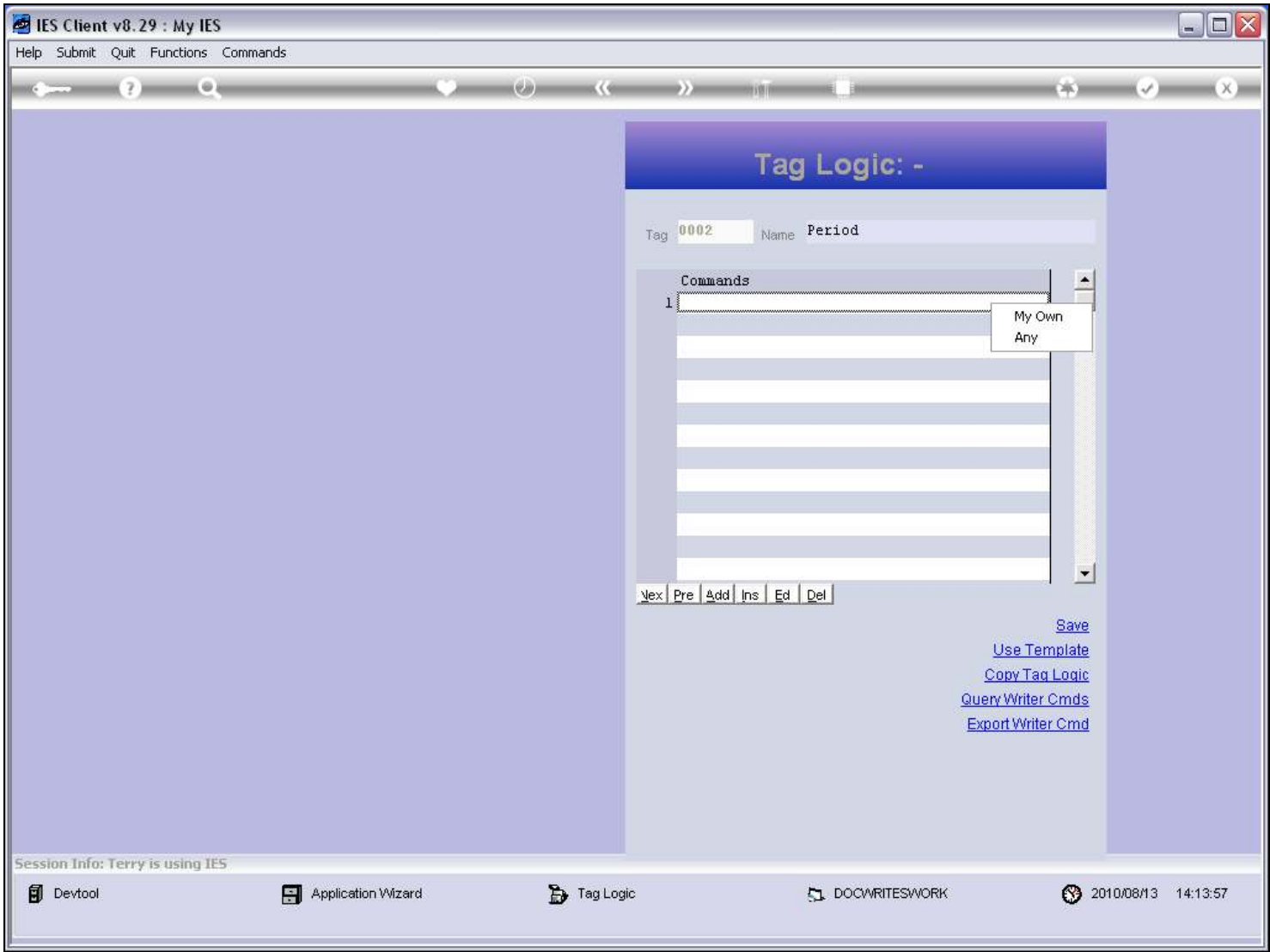


Slide notes

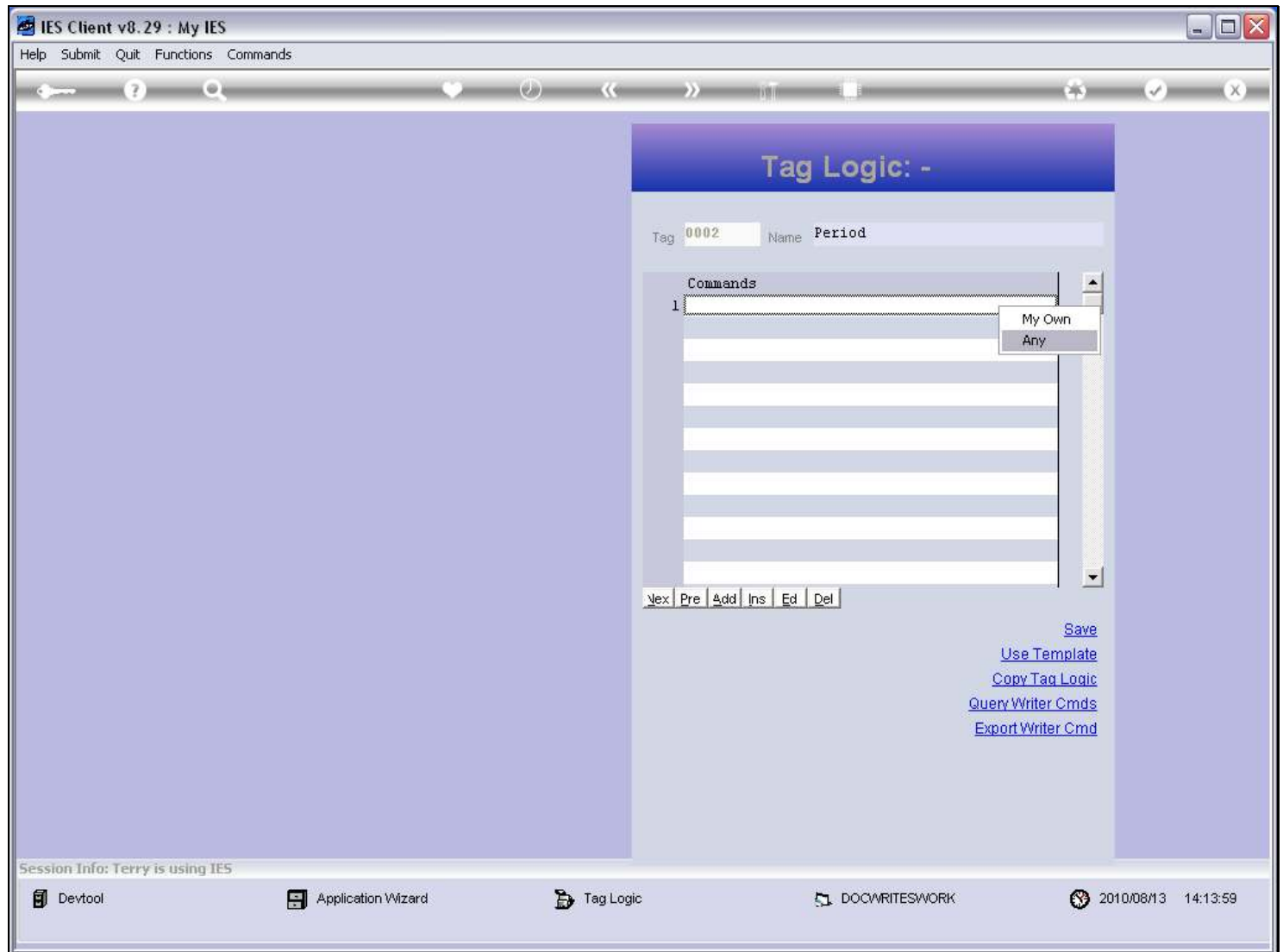
Slide 4 - Slide 4**Slide notes**

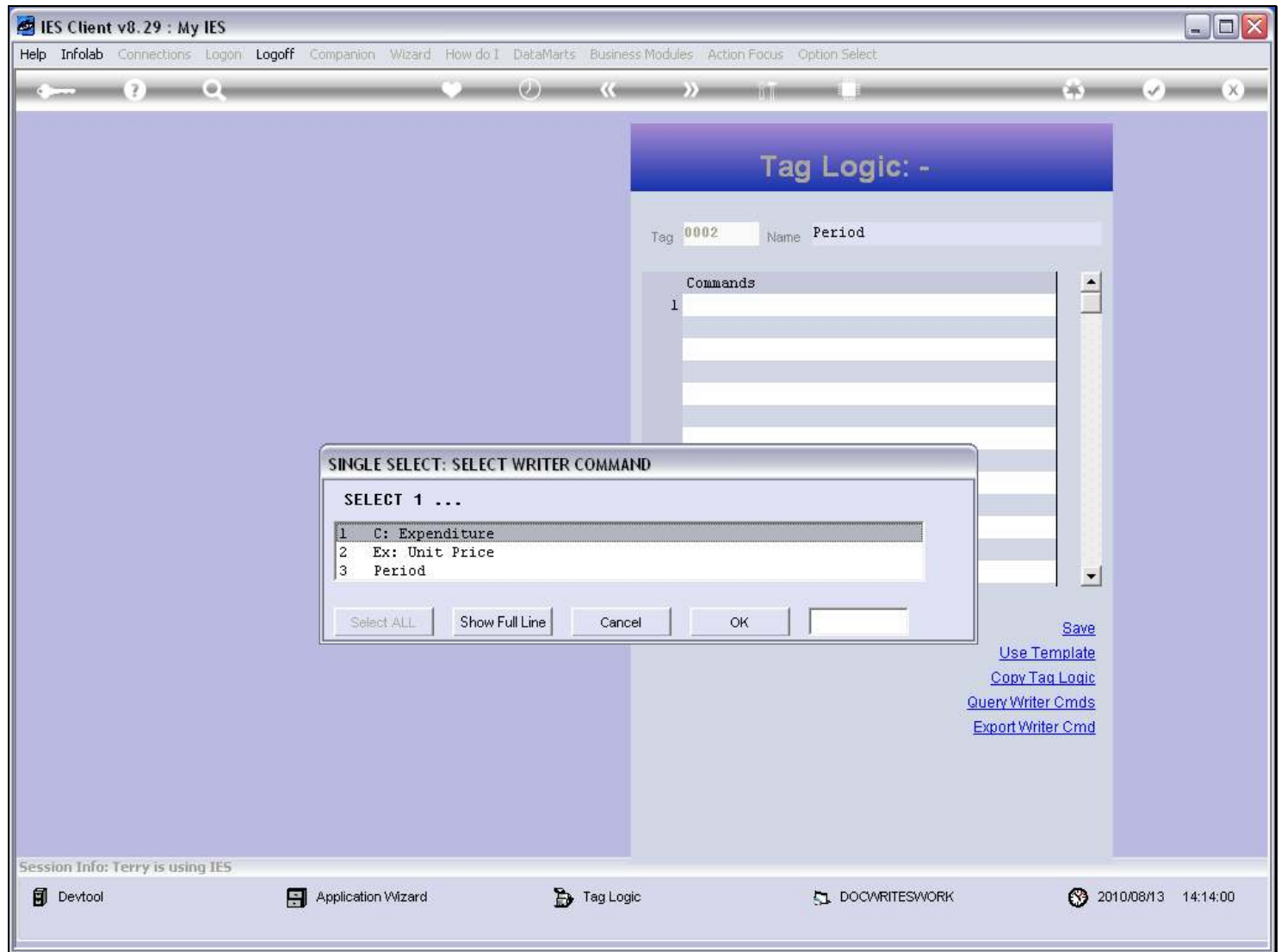
And the Macro Wizard has an option to import a Writer Command, which it calls 'Insert Multi Command'.

Slide 5 - Slide 5

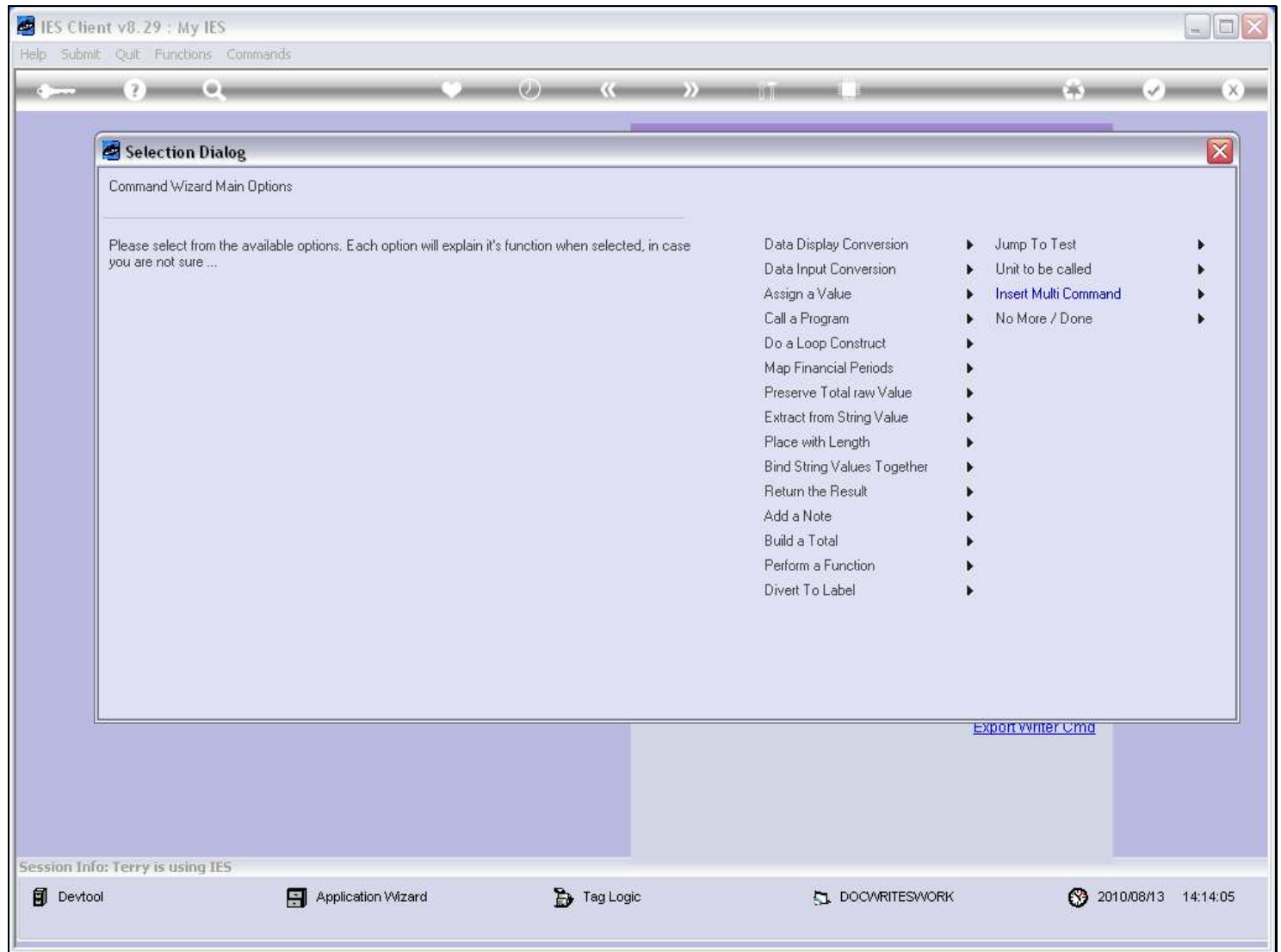


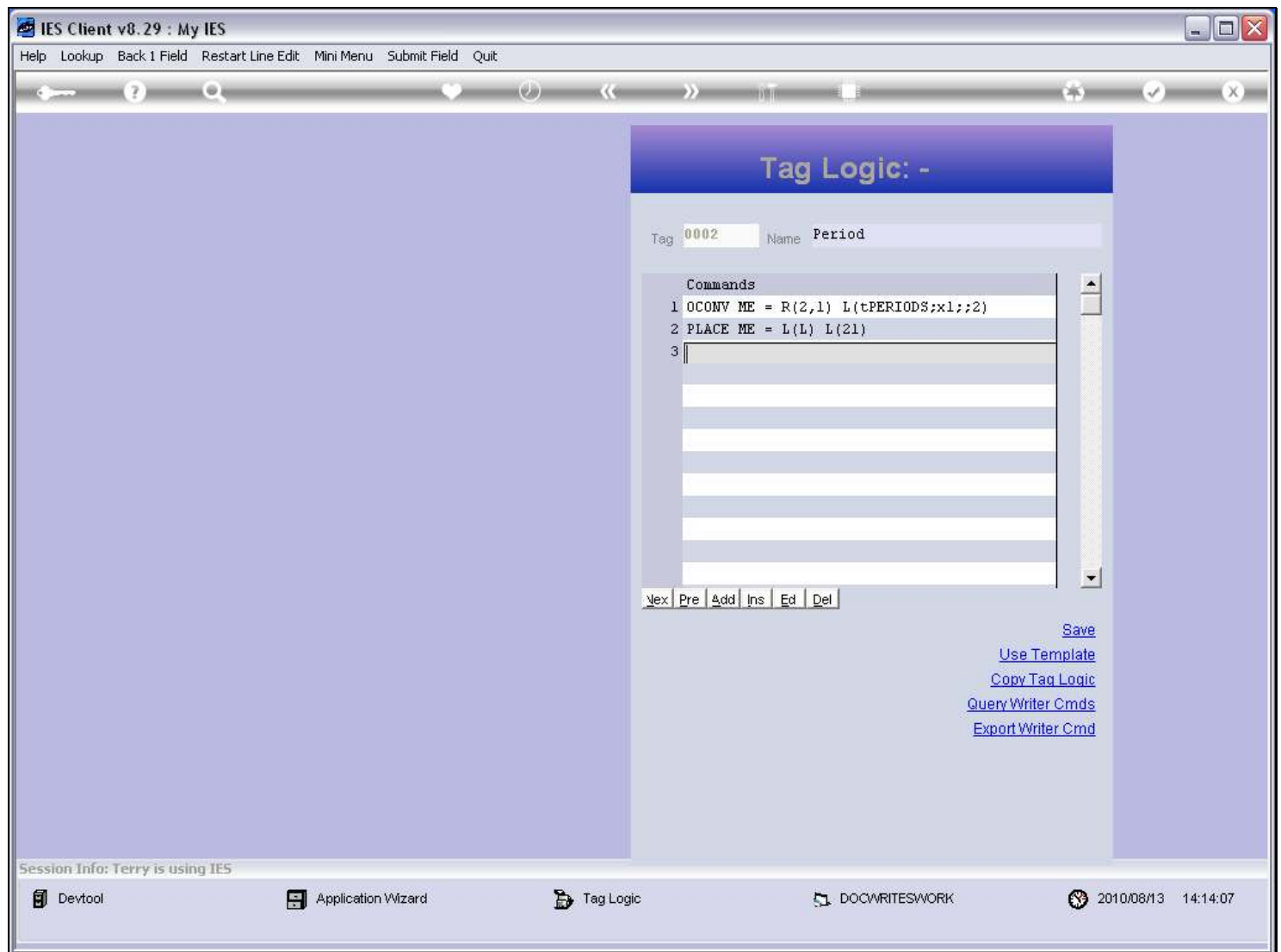
Slide notes

Slide 6 - Slide 6**Slide notes**

Slide 7 - Slide 7**Slide notes**

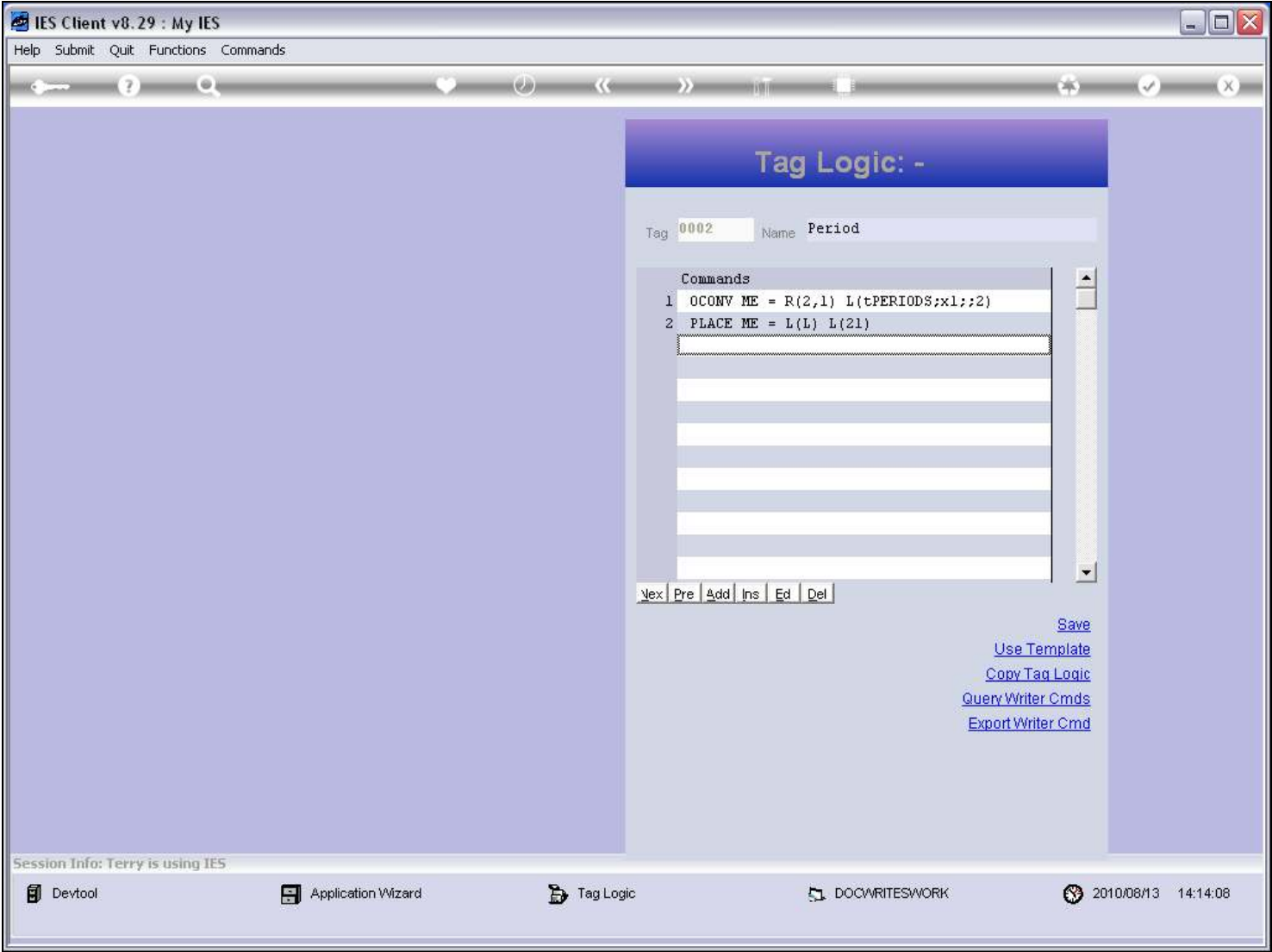
We just select the Writer Command to import.

Slide 8 - Slide 8**Slide notes**

Slide 9 - Slide 9**Slide notes**

Writer Commands can be inserted before or after other lines, or by itself. In this case, the Writer Command is the complete Tag Logic that we need here.

Slide 10 - Slide 10



Slide notes