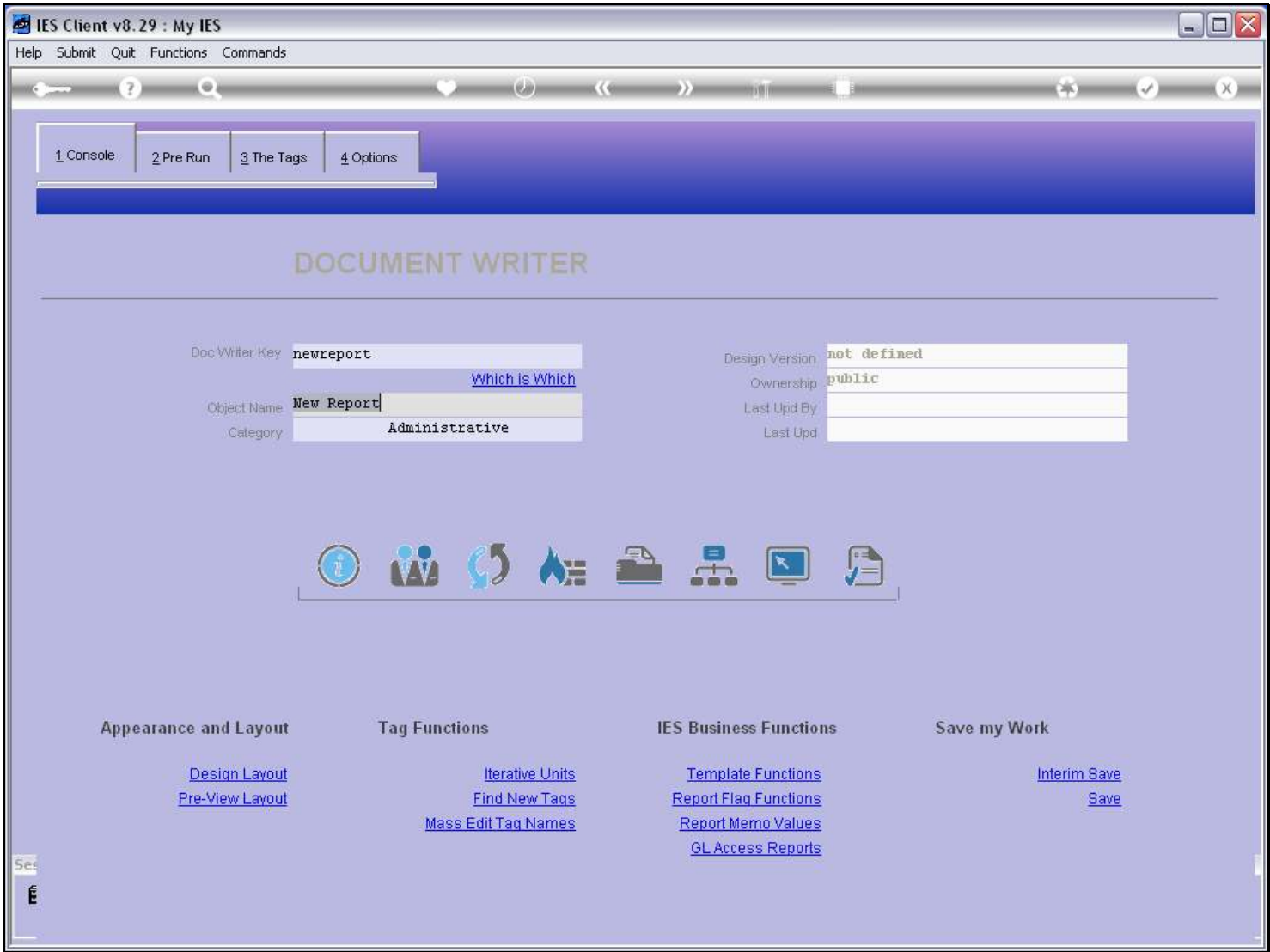


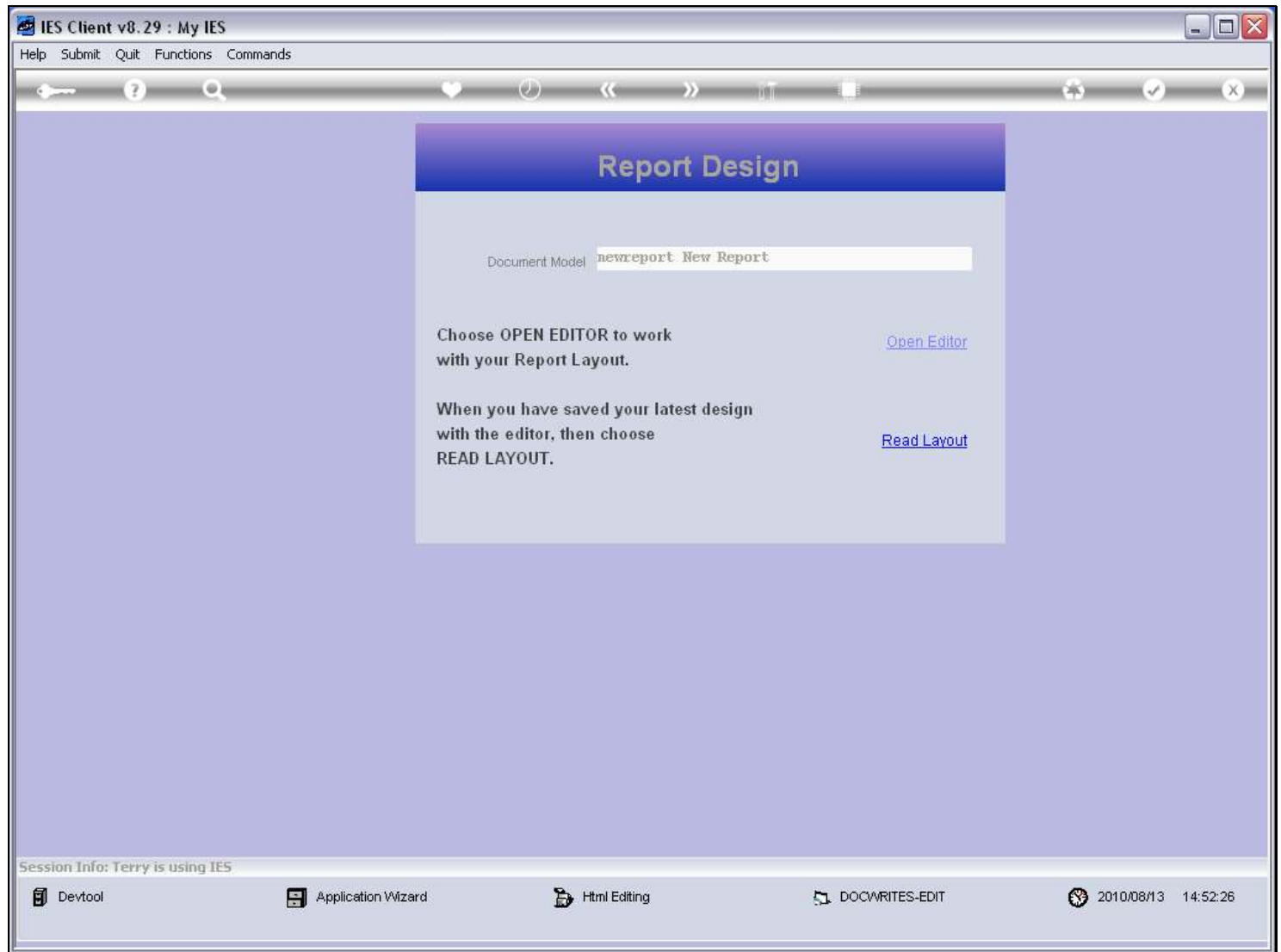
Slide 1 - Slide 1



Slide notes

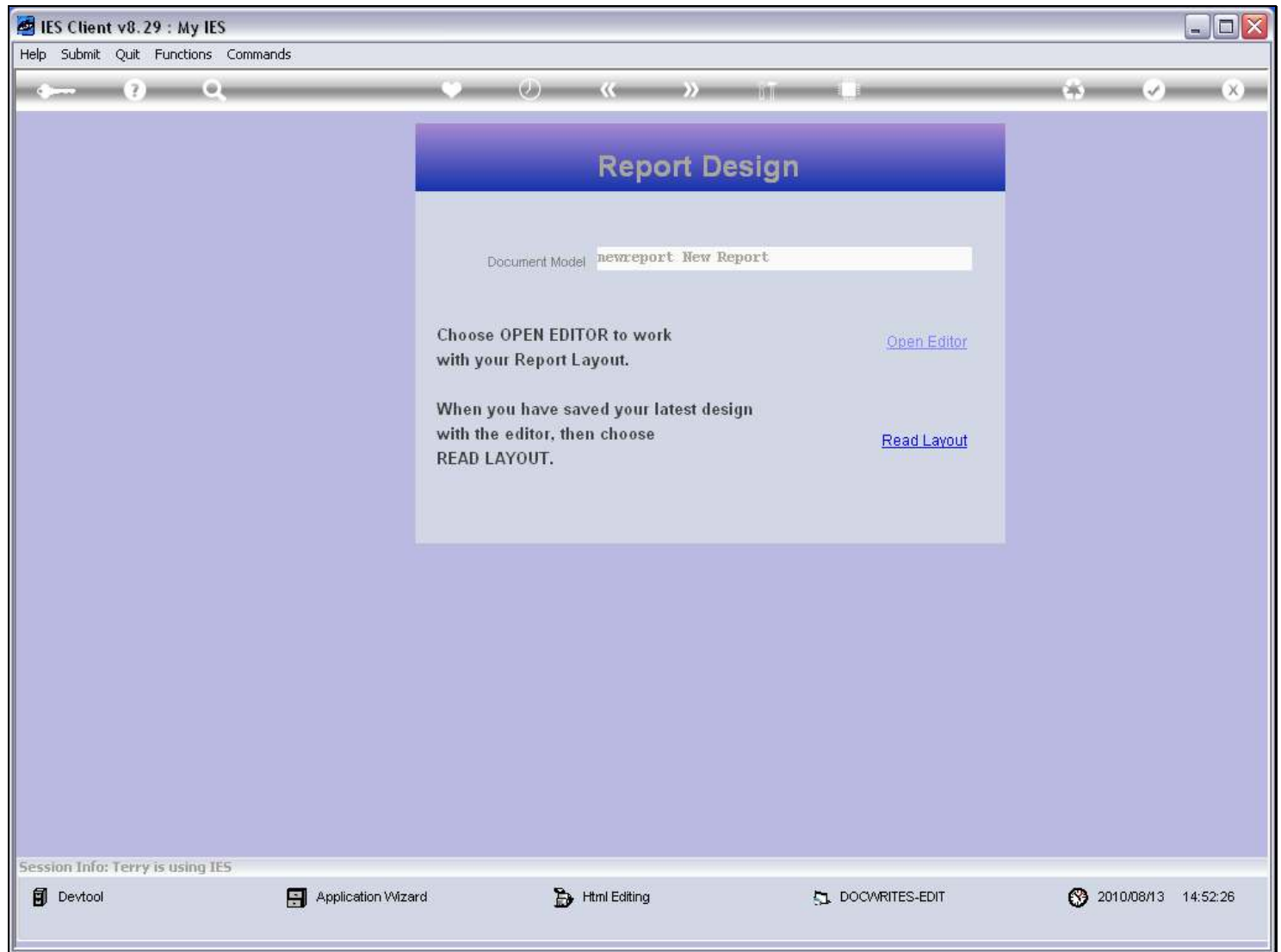
When we design our Report Layout, we do so with the HTML Editor of our choice.

Slide 2 - Slide 2



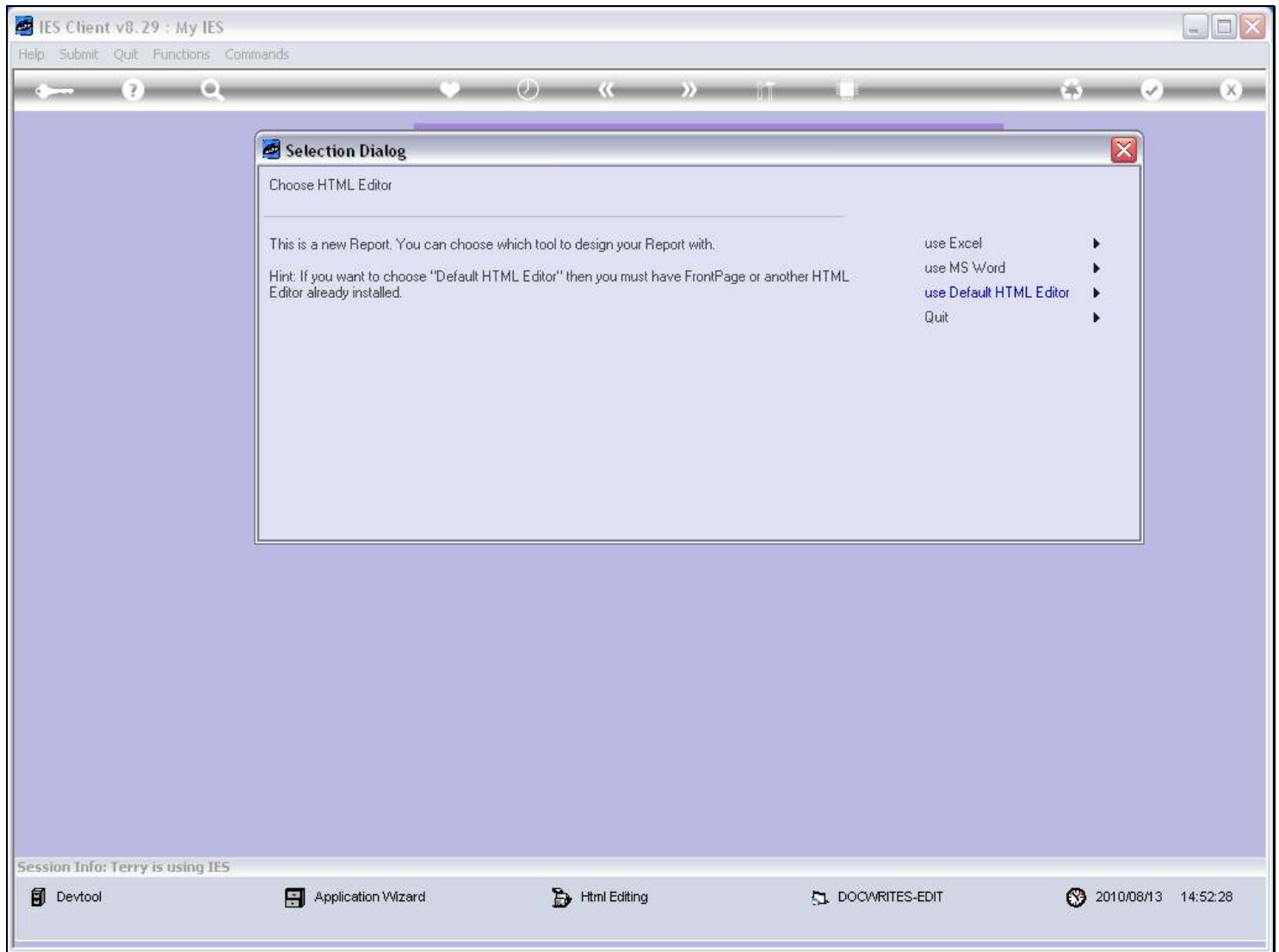
Slide notes

Slide 3 - Slide 3



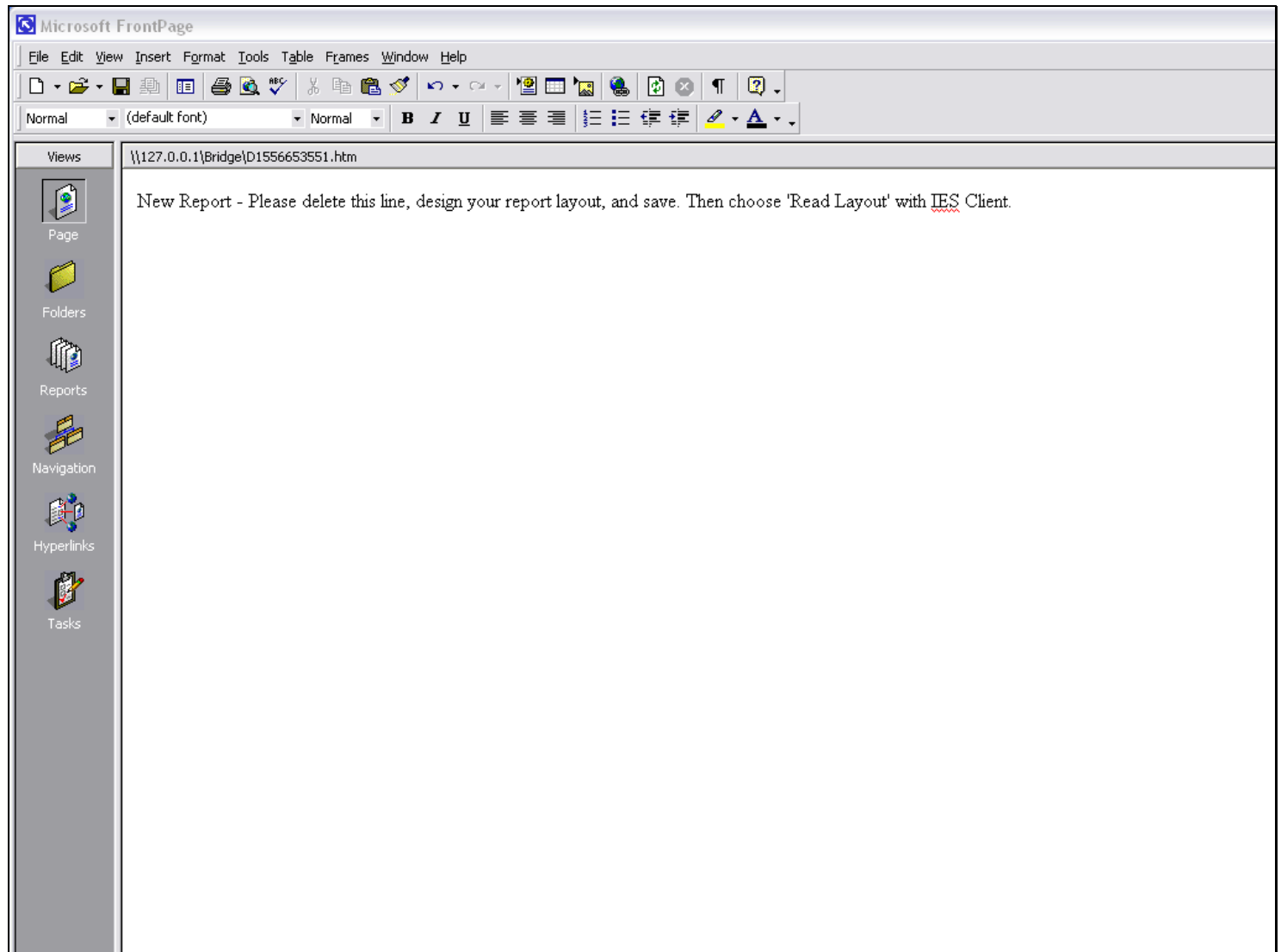
Slide notes

For a new Report that is not a copy from another Report, then the 1st time that we open the Editor, we get to choose which Editor to use. After that, as in the case of a copy from another Report, the Report is marked with the Editor and will always use the same Editor as before.

Slide 4 - Slide 4**Slide notes**

If we choose 'Default HTML Editor' then it depends which HTML Editor we have installed, and that is the one that will be used. This is in fact the best choice, because real HTML Editors are better designed for HTML production.

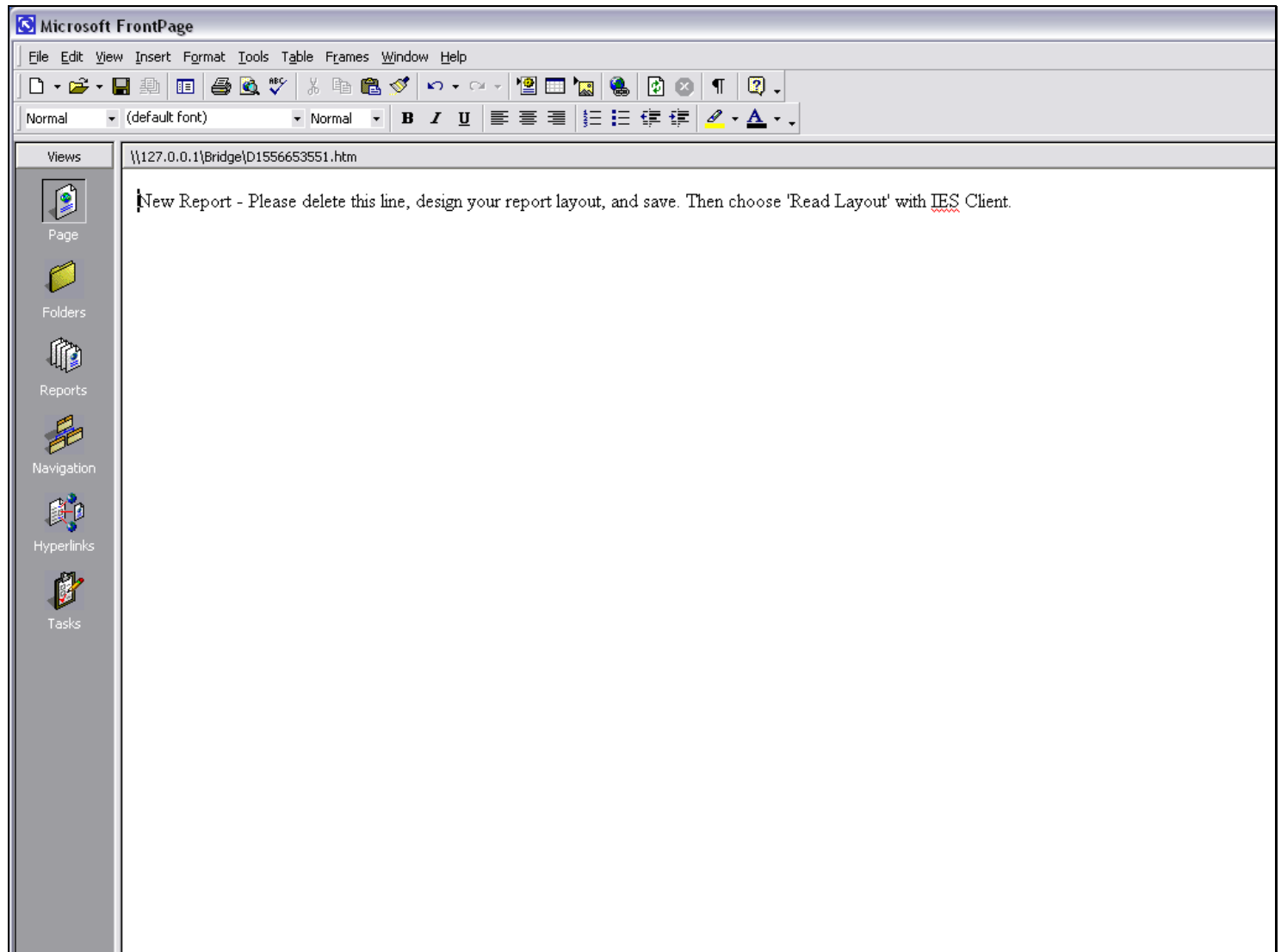
Slide 5 - Slide 5



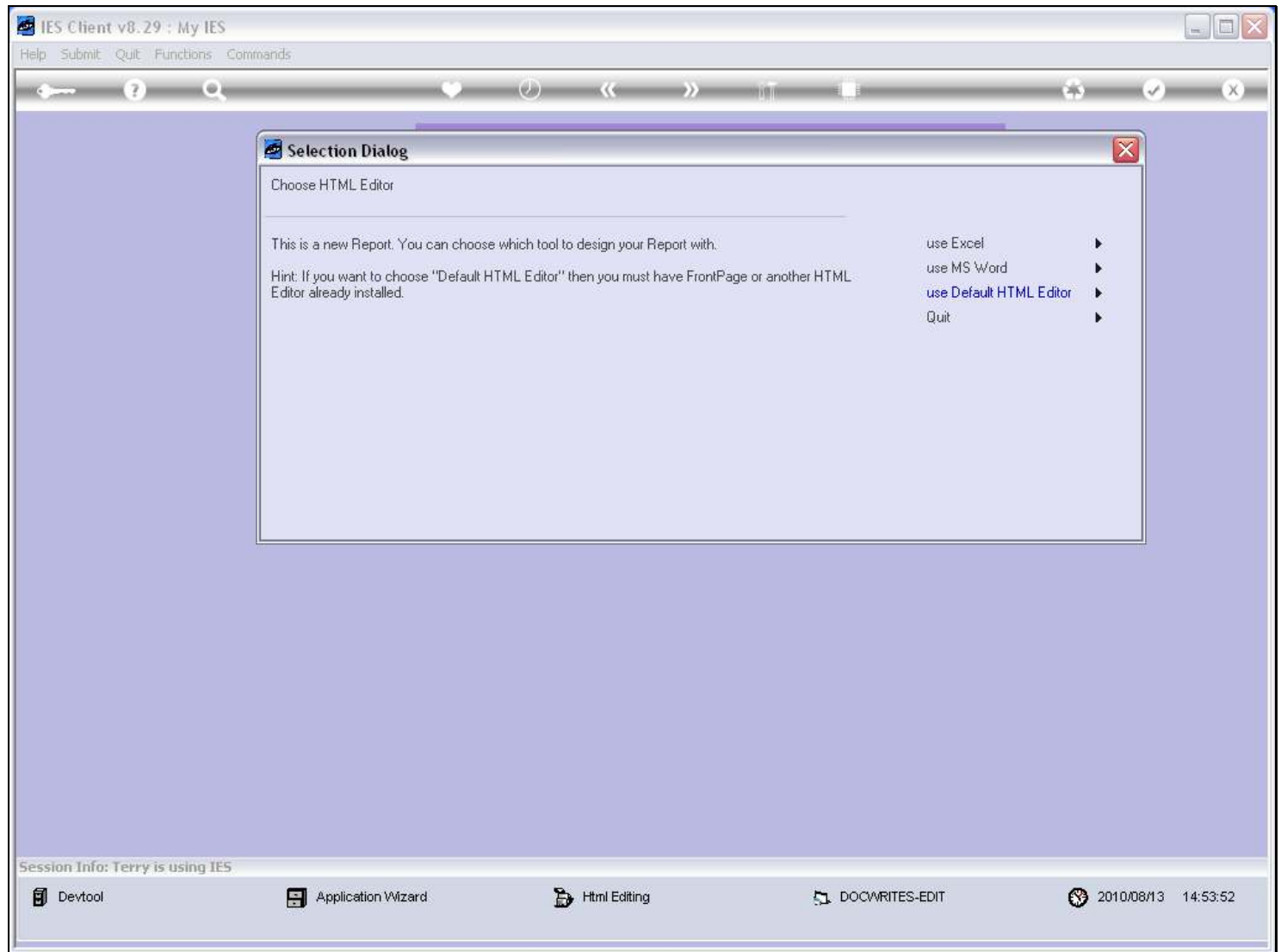
Slide notes

In this example, the local machine has Microsoft Front Page installed as HTML Editor.

Slide 6 - Slide 6

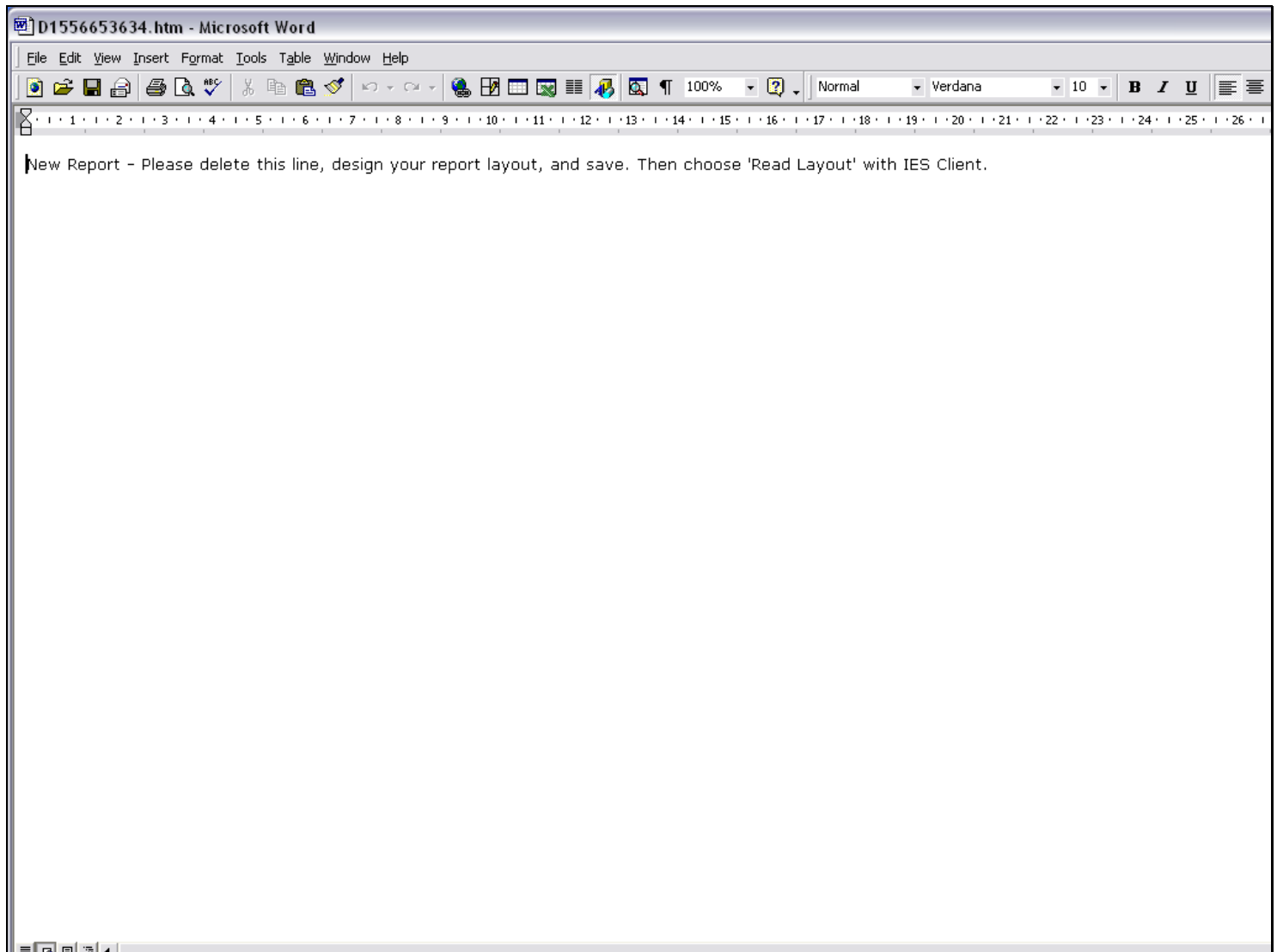


Slide notes

Slide 7 - Slide 7**Slide notes**

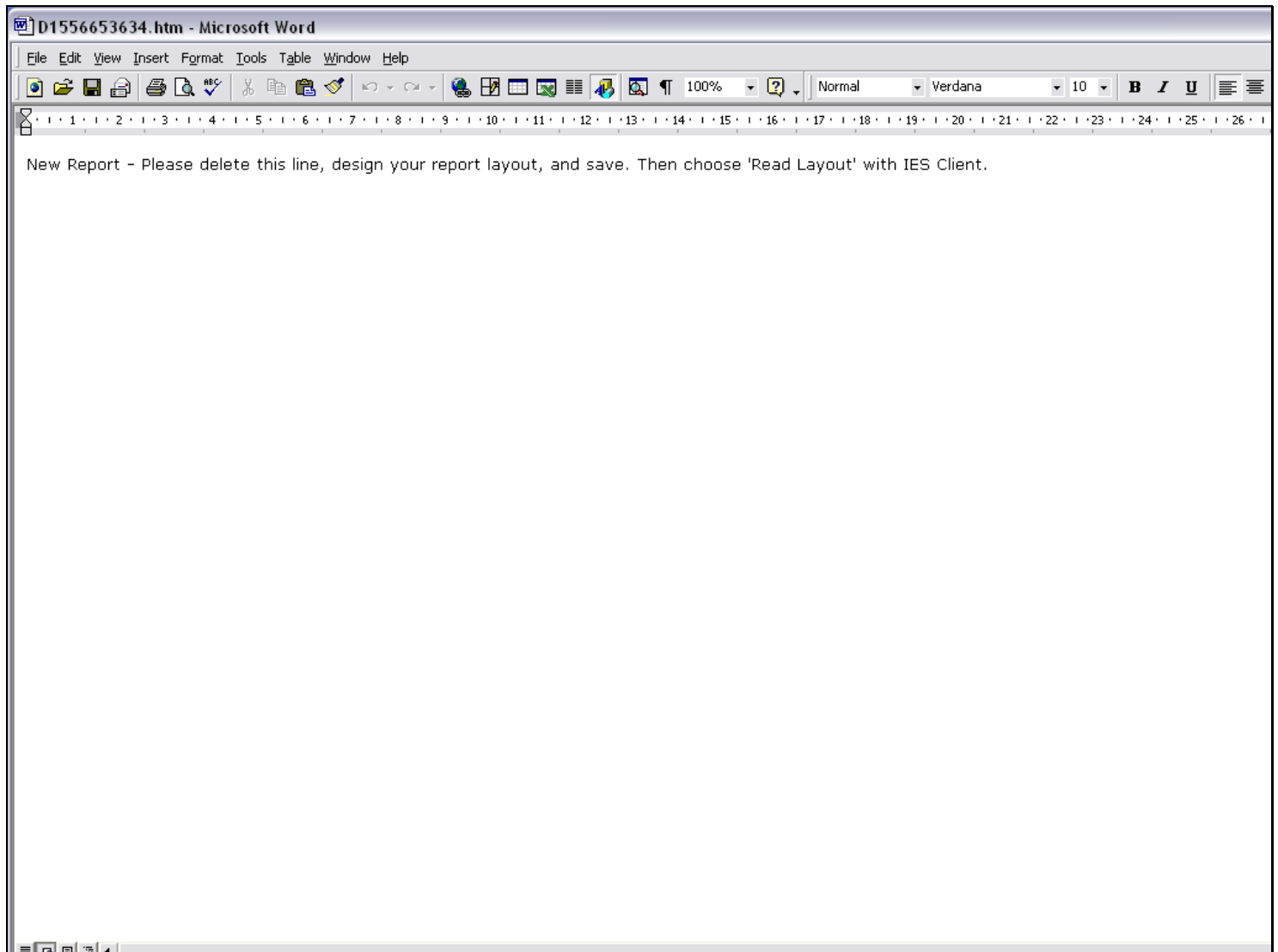
We can also choose to use Microsoft Word.

Slide 8 - Slide 8

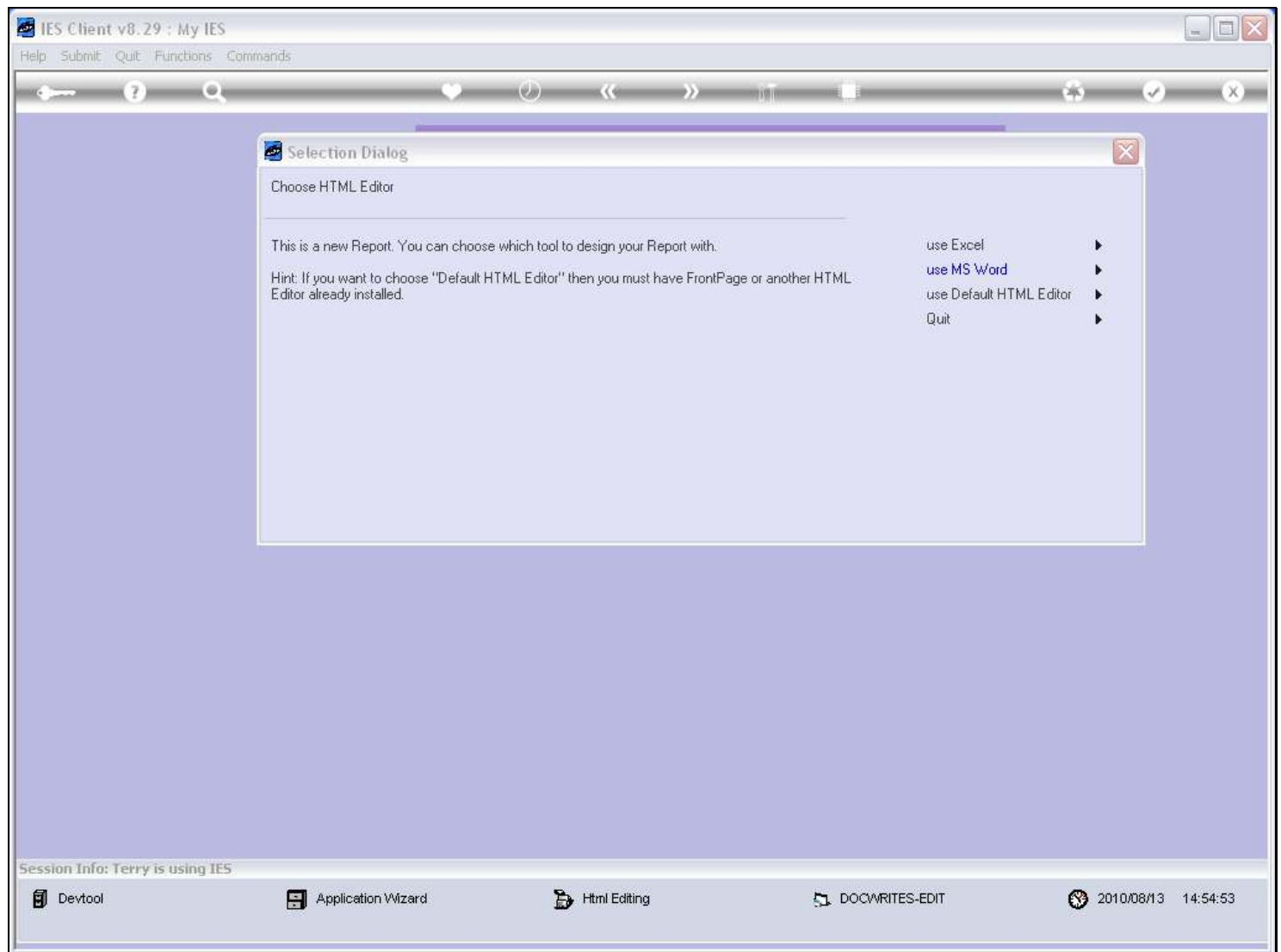


Slide notes

Slide 9 - Slide 9

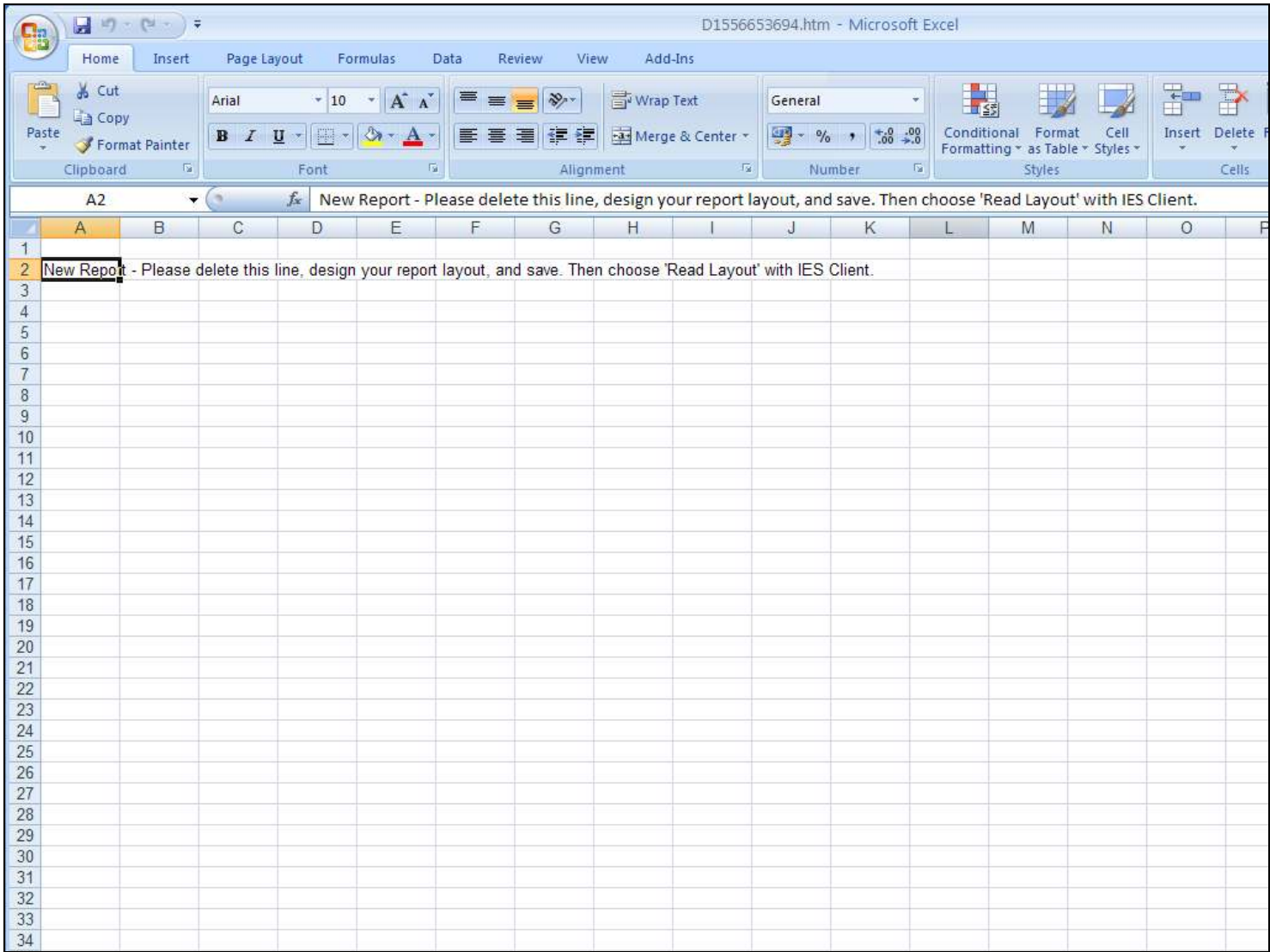


Slide notes

Slide 10 - Slide 10**Slide notes**

And of course, the most popular choice with Users turns out to be Microsoft Excel, most likely because most Users and Accountants already know it and find it easy to design with this tool.

Slide 11 - Slide 11



Slide notes