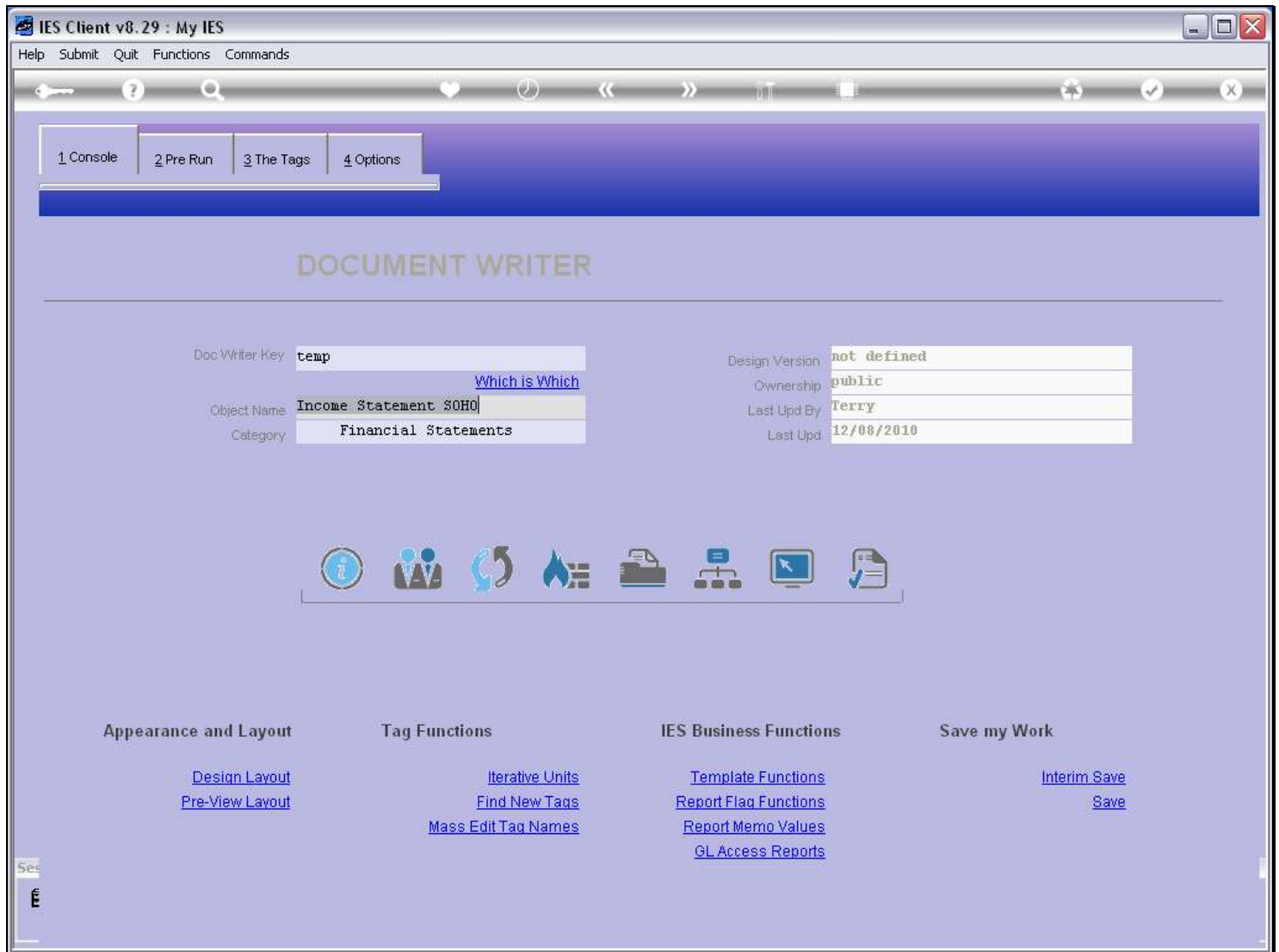


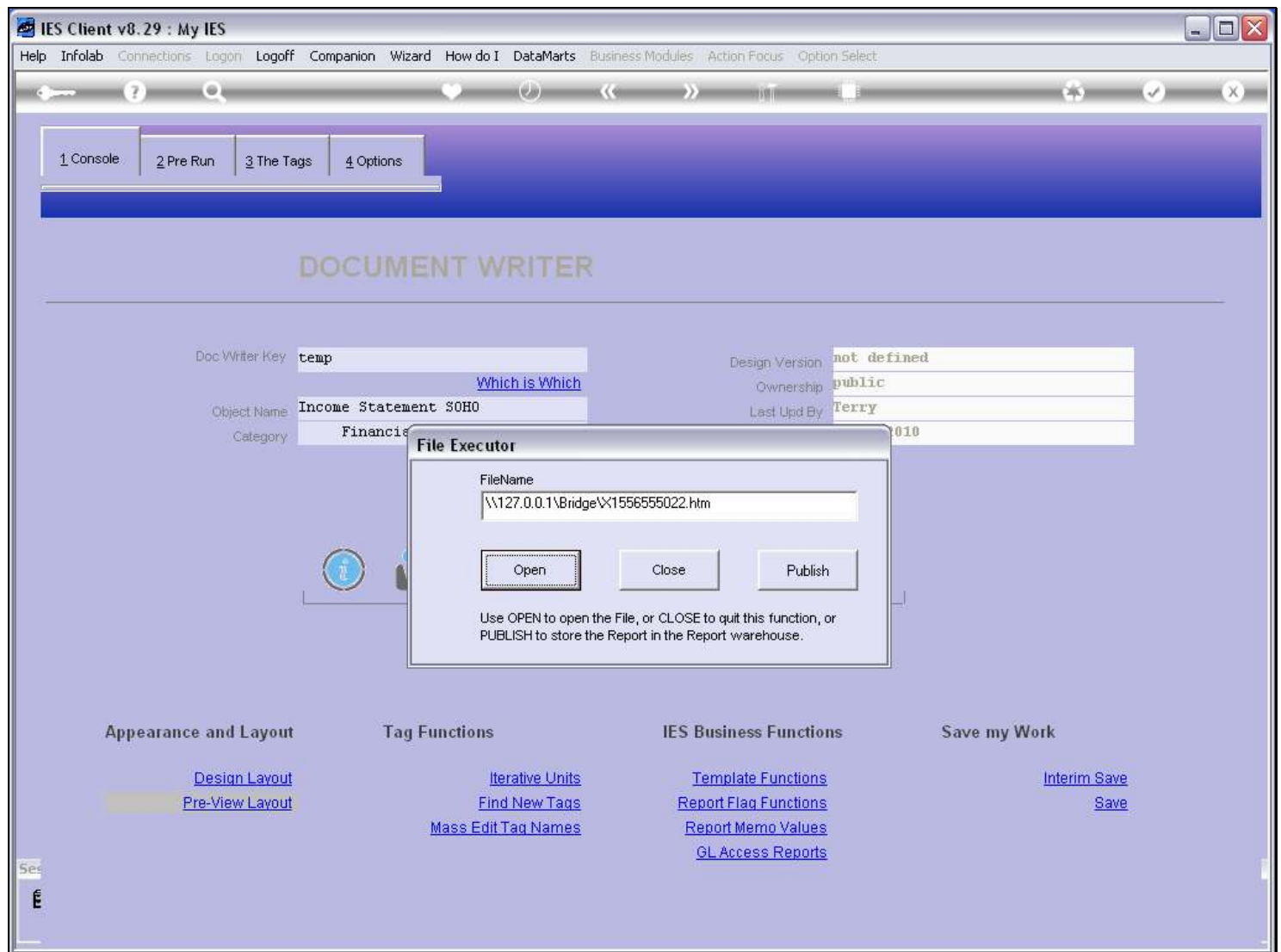
## Slide 1 - Slide 1



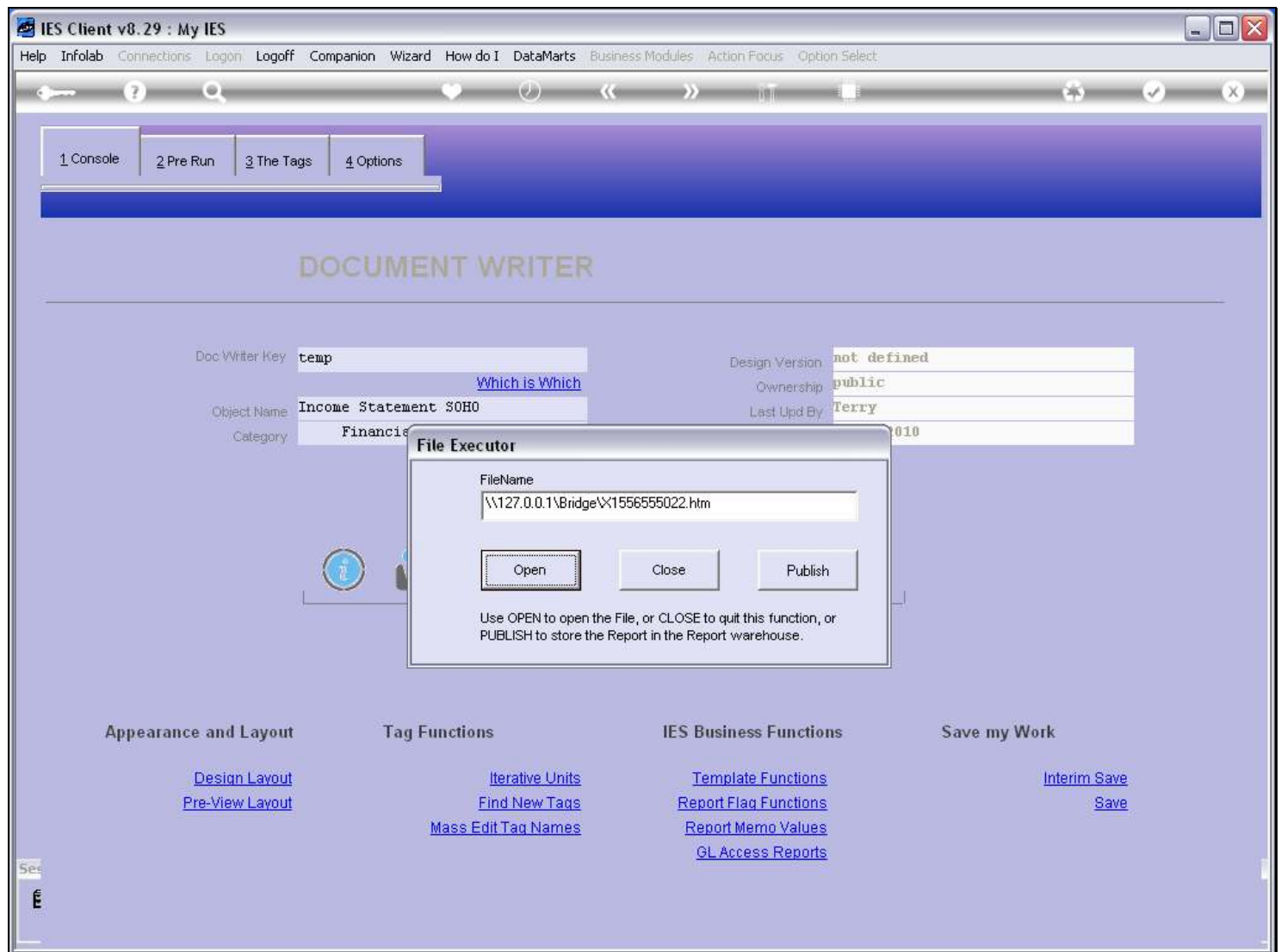
## Slide notes

While working with a Report, especially while doing the Tag Logic, it is often very useful to keep a preview of the Layout open. For this, we have a 'preview' function.

## Slide 2 - Slide 2



## Slide notes

**Slide 3 - Slide 3****Slide notes**

## Slide 4 - Slide 4

[0001] Profit and Loss (Income Statement) for [0002]					
	Actual Current	Budget	Actual YTD	Budget YTD	Annual Budget
Revenue:					
Stock Sales	[0014]	[0015]	[0016]	[0017]	[0018]
Other	[0019]	[0020]	[0021]	[0022]	[0023]
Total Revenue	[0024]	[0025]	[0026]	[0027]	[0028]
Costs					
Rent and Utilities	[0029]	[0030]	[0031]	[0032]	[0033]
Bad Debts	[0034]	[0035]	[0036]	[0037]	[0038]
Staff Costs	[0039]	[0040]	[0041]	[0042]	[0043]
Office Costs	[0044]	[0045]	[0046]	[0047]	[0048]
Audit Fees	[0049]	[0050]	[0051]	[0052]	[0053]
Computer Systems	[0054]	[0055]	[0056]	[0057]	[0058]
Equipment Maintenance	[0059]	[0060]	[0061]	[0062]	[0063]
Sundry Expenses	[0064]	[0065]	[0066]	[0067]	[0068]
Total Cost of Sales	[0069]	[0070]	[0071]	[0072]	[0073]
[0084]					
[0085] Gross Profit	[0074]	[0075]	[0076]	[0077]	[0078]
[0086]					
[0087] Gross Loss	[0079]	[0080]	[0081]	[0082]	[0083]
[0088]					
[0097] [0091] [0092] [0093] [0094] [0095] [0096] [0098]					

## Slide notes

The Preview does not calculate results. Instead, it shows us the layout for the Report with the Tags as they are positioned.