

## Slide 1 - Slide 1

D1556738043.htm - Microsoft Excel

Home Insert Page Layout Formulas Data Review View Add-Ins

Clipboard Font Alignment Number Styles Cells

A15 fx Staff Costs

	A	B	C	D	E	F	G	H	I	J	K	L
1												
2												
3												
4												
5												
6												
7	Revenue											
8	Stock Sales											
9	Interest Received											
10	Total Revenue											
11												
12	Costs											
13	Rent and Utilities											
14	Bad Debts											
15	Staff Costs											
16	Office Costs											
17	Audit Fees											
18	Computer Systems											
19	Equipment Maintenance											
20	Sundry Expenses											
21	Total Cost of Sales											
22	[0084]											
23	[0085]Gross Profit											[0086]
24												
25	[0087]Gross Loss											[0088]
26	[0097] [0091] [0092] [0093] [0094] [0095] [0096] [0098]											
27												
28												
29												
30												
31												
32												
33												
34												

## Slide notes

Tag calculation happens in the order of left to right and top to bottom.

## Slide 2 - Slide 2

D1556738043.htm - Microsoft Excel

Home Insert Page Layout Formulas Data Review View Add-Ins

Clipboard Font Alignment Number Styles Cells

A15 Staff Costs

	Actual Current	Budget	Actual YTD	Budget YTD	Annual Budget
[0001] Profit and Loss (Income Statement) for [0002]					
Revenue					
Stock Sales	[0014]	[0015]	[0016]	[0017]	[0018]
Interest Received	[0019]	[0020]	[0021]	[0022]	[0023]
Total Revenue	[0024]	[0025]	[0026]	[0027]	[0028]
Costs					
Rent and Utilities	[0029]	[0030]	[0031]	[0032]	[0033]
Bad Debts	[0034]	[0035]	[0036]	[0037]	[0038]
Staff Costs	[0039]	[0040]	[0041]	[0042]	[0043]
Office Costs	[0044]	[0045]	[0046]	[0047]	[0048]
Audit Fees	[0049]	[0050]	[0051]	[0052]	[0053]
Computer Systems	[0054]	[0055]	[0056]	[0057]	[0058]
Equipment Maintenance	[0059]	[0060]	[0061]	[0062]	[0063]
Sundry Expenses	[0064]	[0065]	[0066]	[0067]	[0068]
Total Cost of Sales	[0069]	[0070]	[0071]	[0072]	[0073]
[0084]					
[0085]Gross Profit	[0074]	[0075]	[0076]	[0077]	[0078]
[0087]Gross Loss	[0079]	[0080]	[0081]	[0082]	[0083]
[0097] [0091] [0092] [0093] [0094] [0095] [0096] [0098]					

## Slide notes

[illegible]

## Page 3 of 41

## Slide 4 - Slide 4

D1556738043.htm - Microsoft Excel

Home Insert Page Layout Formulas Data Review View Add-Ins

Clipboard Font Alignment Number Styles Cells

A2 [0001]

	A	B	C	D	E	F	G	H	I	J	K	L
1												
2		[0001]										
3		Profit and Loss (Income Statement) for [0002]										
4												
5		Actual Current	Budget		Actual YTD	Budget YTD		Annual Budget				
6												
7	Revenue											
8	Stock Sales	[0014]	[0015]		[0016]	[0017]		[0018]				
9	Interest Received	[0019]	[0020]		[0021]	[0022]		[0023]				
10	Total Revenue	[0024]	[0025]		[0026]	[0027]		[0028]				
11												
12	Costs											
13	Rent and Utilities	[0029]	[0030]		[0031]	[0032]		[0033]				
14	Bad Debts	[0034]	[0035]		[0036]	[0037]		[0038]				
15	Staff Costs	[0039]	[0040]		[0041]	[0042]		[0043]				
16	Office Costs	[0044]	[0045]		[0046]	[0047]		[0048]				
17	Audit Fees	[0049]	[0050]		[0051]	[0052]		[0053]				
18	Computer Systems	[0054]	[0055]		[0056]	[0057]		[0058]				
19	Equipment Maintenance	[0059]	[0060]		[0061]	[0062]		[0063]				
20	Sundry Expenses	[0064]	[0065]		[0066]	[0067]		[0068]				
21	Total Cost of Sales	[0069]	[0070]		[0071]	[0072]		[0073]				
22	[0084]											
23	[0085]Gross Profit	[0074]	[0075]		[0076]	[0077]		[0078]			[0086]	
24												
25	[0087]Gross Loss	[0079]	[0080]		[0081]	[0082]		[0083]			[0088]	
26	[0097] [0091] [0092] [0093] [0094] [0095] [0096] [0098]											
27												
28												
29												
30												
31												
32												
33												
34												

## Slide notes

D1556738043.htm - Microsoft Excel

Home Insert Page Layout Formulas Data Review View Add-Ins

Paste Cut Copy Format Painter Clipboard Font Alignment Number Conditional Formatting Styles Cell Styles Insert Delete Cells

A27 fx |0089|

	A	B	C	D	E	F	G	H	I	J	K	L
1												
2	[0001]											
3	Profit and Loss (Income Statement) for [0002]											
4												
5		Actual Current	Budget		Actual YTD	Budget YTD		Annual Budget				
6												
7	Revenue											
8	Stock Sales	[0014]	[0015]		[0016]	[0017]		[0018]				
9	Interest Received	[0019]	[0020]		[0021]	[0022]		[0023]				
10	Total Revenue	[0024]	[0025]		[0026]	[0027]		[0028]				
11												
12	Costs											
13	Rent and Utilities	[0029]	[0030]		[0031]	[0032]		[0033]				
14	Bad Debts	[0034]	[0035]		[0036]	[0037]		[0038]				
15	Staff Costs	[0039]	[0040]		[0041]	[0042]		[0043]				
16	Office Costs	[0044]	[0045]		[0046]	[0047]		[0048]				
17	Audit Fees	[0049]	[0050]		[0051]	[0052]		[0053]				
18	Computer Systems	[0054]	[0055]		[0056]	[0057]		[0058]				
19	Equipment Maintenance	[0059]	[0060]		[0061]	[0062]		[0063]				
20	Sundry Expenses	[0064]	[0065]		[0066]	[0067]		[0068]				
21	Total Cost of Sales	[0069]	[0070]		[0071]	[0072]		[0073]				
22	[0084]											
23	[0085]Gross Profit	[0074]	[0075]		[0076]	[0077]		[0078]	[0086]			
24												
25	[0087]Gross Loss	[0079]	[0080]		[0081]	[0082]		[0083]	[0088]			
26	[0097]	[0091]	[0092]	[0093]	[0094]	[0095]	[0096]	[0098]				
27												
28												
29												
30												
31												
32												
33												
34												

## Page 5 of 41



## Slide 6 - Slide 6

D1556738043.htm - Microsoft Excel

Home Insert Page Layout Formulas Data Review View Add-Ins

Clipboard Font Alignment Number Styles Cells

A10 Total Revenue

	Actual Current	Budget	Actual YTD	Budget YTD	Annual Budget
Revenue					
Stock Sales	[0014]	[0015]	[0016]	[0017]	[0018]
Interest Received	[0019]	[0020]	[0021]	[0022]	[0023]
Total Revenue	[0024]	[0025]	[0026]	[0027]	[0028]
Costs					
Rent and Utilities	[0029]	[0030]	[0031]	[0032]	[0033]
Bad Debts	[0034]	[0035]	[0036]	[0037]	[0038]
Staff Costs	[0039]	[0040]	[0041]	[0042]	[0043]
Office Costs	[0044]	[0045]	[0046]	[0047]	[0048]
Audit Fees	[0049]	[0050]	[0051]	[0052]	[0053]
Computer Systems	[0054]	[0055]	[0056]	[0057]	[0058]
Equipment Maintenance	[0059]	[0060]	[0061]	[0062]	[0063]
Sundry Expenses	[0064]	[0065]	[0066]	[0067]	[0068]
Total Cost of Sales	[0069]	[0070]	[0071]	[0072]	[0073]
[0084]					
[0085]Gross Profit	[0074]	[0075]	[0076]	[0077]	[0078]
[0087]Gross Loss	[0079]	[0080]	[0081]	[0082]	[0083]
[0097] [0091] [0092] [0093] [0094] [0095] [0096] [0098]					

## Slide notes

**Slide 7 - Slide 7**



**Slide notes**

## Slide 8 - Slide 8

D1556738043.htm - Microsoft Excel

Home Insert Page Layout Formulas Data Review View Add-Ins

Clipboard Font Alignment Number Styles Cells

A10 Total Revenue

	Actual Current	Budget	Actual YTD	Budget YTD	Annual Budget
[0001] Profit and Loss (Income Statement) for [0002]					
Revenue					
Stock Sales	[0014]	[0015]	[0016]	[0017]	[0018]
Interest Received	[0019]	[0020]	[0021]	[0022]	[0023]
Total Revenue	[0024]	[0025]	[0026]	[0027]	[0028]
Costs					
Rent and Utilities	[0029]	[0030]	[0031]	[0032]	[0033]
Bad Debts	[0034]	[0035]	[0036]	[0037]	[0038]
Staff Costs	[0039]	[0040]	[0041]	[0042]	[0043]
Office Costs	[0044]	[0045]	[0046]	[0047]	[0048]
Audit Fees	[0049]	[0050]	[0051]	[0052]	[0053]
Computer Systems	[0054]	[0055]	[0056]	[0057]	[0058]
Equipment Maintenance	[0059]	[0060]	[0061]	[0062]	[0063]
Sundry Expenses	[0064]	[0065]	[0066]	[0067]	[0068]
Total Cost of Sales	[0069]	[0070]	[0071]	[0072]	[0073]
[0084]					
[0085]Gross Profit	[0074]	[0075]	[0076]	[0077]	[0078]
[0087]Gross Loss	[0079]	[0080]	[0081]	[0082]	[0083]
[0097] [0091] [0092] [0093] [0094] [0095] [0096] [0098]					

## Slide notes

But what if this 'Total' line actually appeared ABOVE the 'Detail' Lines. In that case, the Total will be calculated before the Tags that provide the Input, and they will be zero because they have not been calculated yet! That's why we have Execution Iterations. Any Tags may be listed for higher Execution Iterations. So if Tag 2, in the normal sequence, is calculated before Tag 1, but Tag 2 needs Tag 1 to be already calculated, then we can raise the Execution Iteration of Tag 2 to 2. With every Execution Iteration, only the Tags listed for that Iteration will be calculated.



## Slide 9 - Slide 9

IES Client v8.29 : My IES

Help Submit Quit Functions Commands

1 Console 2 Pre Run 3 The Tags 4 Options

Tag Result Macros: -

>>> Tags	Value Names	Exec It
1 0001	Co Name	1
2 0002	Period	1
3 0014	Stock Sales: Cur	1
4 0015	Stock Sales: Bud	1
5 0016	Stock Sales: YTD	1
6 0017	Stock Sales: YTD Bud	1
7 0018	Stock Sales: Ann Bud	1
8 0019	Interest Received: Cur	1
9 0020	Interest Received: Bud	1
10 0021	Interest Received: YTD	1
11 0022	Interest Received: YTD Bud	1
12 0023	Interest Received: Ann Bud	1
13 0024	Tot Revenue: Cur	1
14 0025	Tot Revenue: Bud	1
15 0026	Tot Revenue: YTD	1
16 0027	Tot Revenue: YTD Bud	1
17 0028	Tot Revenue: Ann Bud	1
18 0029	Rent: Cur	1
19 0030	Rent: Bud	1
20 0031	Rent: YTD	1
21 0032	Rent: YTD Bud	1
22 0033	Rent: Ann Bud	1
23 0034	Bad Debts: Cur	1
24 0035	Bad Debts: Bud	1
25 0036	Bad Debts: YTD	1

Where is that tag !

[Select from Tag List](#)

[Search for Tag Number](#)

[Search for Tag Name](#)

Current Tag Focus: -

Row: 1

Tag #: 0001

Name: Co Name

[Open the Tag Macro](#)

Nex Pre Add Ins Ed Del

### Slide notes

For example, Tag 24 relies on input from Tag 23. So, if in the left-to-right and top-to-bottom scenario, Tag 24 happens before Tag 23, then in that case we need to ensure that Tag 24 is calculated LATER, for example in Calculation round 2.

Slide 10 - Slide 10

IES Client v8.29 : My IES

Help Submit Quit Functions Commands

1 Console2 Pre Run3 The Tags4 Options

Tag Result Macros: -

>>> Tags	Value Names	Exec It
1 0001	Co Name	1
2 0002	Period	1
3 0014	Stock Sales: Cur	1
4 0015	Stock Sales: Bud	1
5 0016	Stock Sales: YTD	1
6 0017	Stock Sales: YTD Bud	1
7 0018	Stock Sales: Ann Bud	1
8 0019	Interest Received: Cur	1
9 0020	Interest Received: Bud	1
10 0021	Interest Received: YTD	1
11 0022	Interest Received: YTD Bud	1
12 0023	Interest Received: Ann Bud	1
13 0024	Tot Revenue: Cur	1
14 0025	Tot Revenue: Bud	1
15 0026	Tot Revenue: YTD	1
16 0027	Tot Revenue: YTD Bud	1
17 0028	Tot Revenue: Ann Bud	1
18 0029	Rent: Cur	1
19 0030	Rent: Bud	1
20 0031	Rent: YTD	1
21 0032	Rent: YTD Bud	1
22 0033	Rent: Ann Bud	1
23 0034	Bad Debts: Cur	1
24 0035	Bad Debts: Bud	1
25 0036	Bad Debts: YTD	1

NexPreAddInsEdDel

Where is that tag !

Select from Tag List

Search for Tag Number

Search for Tag Name

Current Tag Focus: -

Row1

Tag #0001

NameCo Name

Open the Tag Macro

Slide notes

## Slide 11 - Slide 11

IES Client v8.29 : My IES

Help Submit Quit Functions Commands

1 Console 2 Pre Run 3 The Tags 4 Options

Tag Result Macros: -

>>> Tags	Value Names	Exec It
1 0001	Co Name	1
2 0002	Period	1
3 0014	Stock Sales: Cur	1
4 0015	Stock Sales: Bud	1
5 0016	Stock Sales: YTD	1
6 0017	Stock Sales: YTD Bud	1
7 0018	Stock Sales: Ann Bud	1
8 0019	Interest Received: Cur	1
9 0020	Interest Received: Bud	1
10 0021	Interest Received: YTD	1
11 0022	Interest Received: YTD Bud	1
12 0023	Interest Received: Ann Bud	1
13 0024	Tot Revenue: Cur	1
14 0025	Tot Revenue: Bud	1
15 0026	Tot Revenue: YTD	1
16 0027	Tot Revenue: YTD Bud	1
17 0028	Tot Revenue: Ann Bud	1
18 0029	Rent: Cur	1
19 0030	Rent: Bud	1
20 0031	Rent: YTD	1
21 0032	Rent: YTD Bud	1
22 0033	Rent: Ann Bud	1
23 0034	Bad Debts: Cur	1
24 0035	Bad Debts: Bud	1
25 0036	Bad Debts: YTD	1

Where is that tag !

[Select from Tag List](#)

[Search for Tag Number](#)

[Search for Tag Name](#)

Current Tag Focus: -

Row 1

Tag # 0001

Name Co Name

[Open the Tag Macro](#)

Nex Pre Add Ins Ed Del

## Slide notes

We can manually edit the Calculation Round, called the Execution Iteration.

Slide 12 - Slide 12

IES Client v8.29 : My IES

Help Submit Quit Functions Commands

1 Console2 Pre Run3 The Tags4 Options

Tag Result Macros: -

>>> Tags	Value Names	Exec It
1 0001	Co Name	1
2 0002	Period	1
3 0014	Stock Sales: Cur	1
4 0015	Stock Sales: Bud	1
5 0016	Stock Sales: YTD	1
6 0017	Stock Sales: YTD Bud	1
7 0018	Stock Sales: Ann Bud	1
8 0019	Interest Received: Cur	1
9 0020	Interest Received: Bud	1
10 0021	Interest Received: YTD	1
11 0022	Interest Received: YTD Bud	1
12 0023	Interest Received: Ann Bud	1
13 0024	Tot Revenue: Cur	1
14 0025	Tot Revenue: Bud	1
15 0026	Tot Revenue: YTD	1
16 0027	Tot Revenue: YTD Bud	1
17 0028	Tot Revenue: Ann Bud	1
18 0029	Rent: Cur	1
19 0030	Rent: Bud	1
20 0031	Rent: YTD	1
21 0032	Rent: YTD Bud	1
22 0033	Rent: Ann Bud	1
23 0034	Bad Debts: Cur	1
24 0035	Bad Debts: Bud	1
25 0036	Bad Debts: YTD	1

NexPreAddInsEdDel

Where is that tag !

Select from Tag List

Search for Tag Number

Search for Tag Name

Current Tag Focus: -

Row1

Tag #0001

NameCo Name

Open the Tag Macro

Slide notes

Slide 13 - Slide 13

IES Client v8.29 : My IES

Help   Lookup   Back 1 Field   Restart Line Edit   Mini Menu   Submit Field   Quit Edit

1 Console

2 Pre Run

3 The Tags

4 Options

Tag Result Macros: -

>>>	Tags	Value Names	Exec It
1	0001	Co Name	1
2	0002	Period	1
3	0014	Stock Sales: Cur	1
4	0015	Stock Sales: Bud	1
5	0016	Stock Sales: YTD	1
6	0017	Stock Sales: YTD Bud	1
7	0018	Stock Sales: Ann Bud	1
8	0019	Interest Received: Cur	1
9	0020	Interest Received: Bud	1
10	0021	Interest Received: YTD	1
11	0022	Interest Received: YTD Bud	1
12	0023	Interest Received: Ann Bud	1
13	0024	Tot Revenue: Cur	1
14	0025	Tot Revenue: Bud	1
15	0026	Tot Revenue: YTD	1
16	0027	Tot Revenue: YTD Bud	1
17	0028	Tot Revenue: Ann Bud	1
18	0029	Rent: Cur	1
19	0030	Rent: Bud	1
20	0031	Rent: YTD	1
21	0032	Rent: YTD Bud	1
22	0033	Rent: Ann Bud	1
23	0034	Bad Debts: Cur	1
24	0035	Bad Debts: Bud	1
25	0036	Bad Debts: YTD	1

Sec

E

Nex

Pre

Add

Ins

Ed

Del

Where is that tag !

Select from Tag List

Search for Tag Number

Search for Tag Name

Current Tag Focus: -

Row

1

Tag #

0001

Name

Co Name

Open the Tag Macro

Slide notes



Slide 14 - Slide 14

IES Client v8.29 : My IES

Help    Lookup    Back 1 Field    Restart Line Edit    Mini Menu    Submit Field    Quit Edit

1 Console

2 Pre Run

3 The Tags

4 Options

Tag Result Macros: -

>>>	Tags	Value Names	Exec It
1	0001	Co Name	1
2	0002	Period	1
3	0014	Stock Sales: Cur	1
4	0015	Stock Sales: Bud	1
5	0016	Stock Sales: YTD	1
6	0017	Stock Sales: YTD Bud	1
7	0018	Stock Sales: Ann Bud	1
8	0019	Interest Received: Cur	1
9	0020	Interest Received: Bud	1
10	0021	Interest Received: YTD	1
11	0022	Interest Received: YTD Bud	1
12	0023	Interest Received: Ann Bud	1
13	0024	Tot Revenue: Cur	1
14	0025	Tot Revenue: Bud	1
15	0026	Tot Revenue: YTD	1
16	0027	Tot Revenue: YTD Bud	1
17	0028	Tot Revenue: Ann Bud	1
18	0029	Rent: Cur	1
19	0030	Rent: Bud	1
20	0031	Rent: YTD	1
21	0032	Rent: YTD Bud	1
22	0033	Rent: Ann Bud	1
23	0034	Bad Debts: Cur	1
24	0035	Bad Debts: Bud	1
25	0036	Bad Debts: YTD	1

Nex

Pre

Add

Ins

Ed

Del

Where is that tag !

Select from Tag List

Search for Tag Number

Search for Tag Name

Current Tag Focus: -

Row

1

Tag #

0001

Name

Co Name

Open the Tag Macro

Slide notes

Slide 15 - Slide 15

IES Client v8.29 : My IES

Help    Lookup    Back 1 Field    Restart Line Edit    Mini Menu    Submit Field    Quit Edit

1 Console

2 Pre Run

3 The Tags

4 Options

Tag Result Macros: -

>>>	Tags	Value Names	Exec It
1	0001	Co Name	1
2	0002	Period	1
3	0014	Stock Sales: Cur	1
4	0015	Stock Sales: Bud	1
5	0016	Stock Sales: YTD	1
6	0017	Stock Sales: YTD Bud	1
7	0018	Stock Sales: Ann Bud	1
8	0019	Interest Received: Cur	1
9	0020	Interest Received: Bud	1
10	0021	Interest Received: YTD	1
11	0022	Interest Received: YTD Bud	1
12	0023	Interest Received: Ann Bud	1
13	0024	Tot Revenue: Cur	1
14	0025	Tot Revenue: Bud	1
15	0026	Tot Revenue: YTD	1
16	0027	Tot Revenue: YTD Bud	1
17	0028	Tot Revenue: Ann Bud	1
18	0029	Rent: Cur	1
19	0030	Rent: Bud	1
20	0031	Rent: YTD	1
21	0032	Rent: YTD Bud	1
22	0033	Rent: Ann Bud	1
23	0034	Bad Debts: Cur	1
24	0035	Bad Debts: Bud	1
25	0036	Bad Debts: YTD	1

Nex

Pre

Add

Ins

Ed

Del

Where is that tag !

Select from Tag List

Search for Tag Number

Search for Tag Name

Current Tag Focus: -

Row

1

Tag #

0001

Name

Co Name

Open the Tag Macro

Slide notes

Slide 16 - Slide 16

IES Client v8.29 : My IES

Help    Lookup    Back 1 Field    Restart Line Edit    Mini Menu    Submit Field    Quit Edit

1 Console

2 Pre Run

3 The Tags

4 Options

Tag Result Macros: -

	>>> Tags	Value Names	Exec It
1	0001	Co Name	1
2	0002	Period	1
3	0014	Stock Sales: Cur	1
4	0015	Stock Sales: Bud	1
5	0016	Stock Sales: YTD	1
6	0017	Stock Sales: YTD Bud	1
7	0018	Stock Sales: Ann Bud	1
8	0019	Interest Received: Cur	1
9	0020	Interest Received: Bud	1
10	0021	Interest Received: YTD	1
11	0022	Interest Received: YTD Bud	1
12	0023	Interest Received: Ann Bud	1
13	0024	Tot Revenue: Cur	2
14	0025	Tot Revenue: Bud	1
15	0026	Tot Revenue: YTD	1
16	0027	Tot Revenue: YTD Bud	1
17	0028	Tot Revenue: Ann Bud	1
18	0029	Rent: Cur	1
19	0030	Rent: Bud	1
20	0031	Rent: YTD	1
21	0032	Rent: YTD Bud	1
22	0033	Rent: Ann Bud	1
23	0034	Bad Debts: Cur	1
24	0035	Bad Debts: Bud	1
25	0036	Bad Debts: YTD	1

Nex

Pre

Add

Ins

Ed

Del

Where is that tag !

Select from Tag List

Search for Tag Number

Search for Tag Name

Current Tag Focus: -

Row

1

Tag #

0001

Name

Co Name

Open the Tag Macro

Slide notes

**Slide 17 - Slide 17**

IES Client v8.29 : My IES

Help Submit Quit Functions Commands

Document

[Next](#)

CURRENT PROCESS = [DOCWRITES] DOCUMENT WRITER

Tag Values are replaced when the Report is executed, but you may have Values that are dependent on other Values being executed 1st, even if such Values are listed higher up in the Report than the Values they depend on, which may be lower down. Therefore, you may use up to 100 iterations of Value execution, and specify with each Value in which Iteration it's Value should be calculated.

For example: You have a list of 10 Numeric Values that are listed on 10 consecutive lines. Elsewhere on the report, you have a Value that is none other than the Total of the 10 Values mentioned. To ensure that the Total is not executed until all of the 10 Values are present, you may specify those 10 Values to be calculated in Iteration 1, and the Total in Iteration 2.

Please note that it does not matter how many different Values are executed in any Iteration, as long as you ensure that a Value that depends on other Values is executed in an Iteration that is higher than the one in which the initial Values are calculated.

Hint: If a Value is always lower down in the list than the Values it depends on, it may safely be calculated in the same iteration.

Function

A Document Writer Master Object defines an HTML Document or Report.

Caution

None.

Make a copy - [Text Copy](#)

Search Phrase

Search the IES web on-line documentation by typing a phrase, then choose "search".

[Search](#)

Doc Key: tt\*userdirect

**Slide notes**

The Help on this Field also explains about Execution Iterations.

Slide 18 - Slide 18

IES Client v8.29 : My IES

Help    Lookup    Back 1 Field    Restart Line Edit    Mini Menu    Submit Field    Quit Edit

1 Console

2 Pre Run

3 The Tags

4 Options

Tag Result Macros: -

	>>> Tags	Value Names	Exec It
1	0001	Co Name	1
2	0002	Period	1
3	0014	Stock Sales: Cur	1
4	0015	Stock Sales: Bud	1
5	0016	Stock Sales: YTD	1
6	0017	Stock Sales: YTD Bud	1
7	0018	Stock Sales: Ann Bud	1
8	0019	Interest Received: Cur	1
9	0020	Interest Received: Bud	1
10	0021	Interest Received: YTD	1
11	0022	Interest Received: YTD Bud	1
12	0023	Interest Received: Ann Bud	1
13	0024	Tot Revenue: Cur	2
14	0025	Tot Revenue: Bud	1
15	0026	Tot Revenue: YTD	1
16	0027	Tot Revenue: YTD Bud	1
17	0028	Tot Revenue: Ann Bud	1
18	0029	Rent: Cur	1
19	0030	Rent: Bud	1
20	0031	Rent: YTD	1
21	0032	Rent: YTD Bud	1
22	0033	Rent: Ann Bud	1
23	0034	Bad Debts: Cur	1
24	0035	Bad Debts: Bud	1
25	0036	Bad Debts: YTD	1

Nex

Pre

Add

Ins

Ed

Del

Where is that tag !

Select from Tag List

Search for Tag Number

Search for Tag Name

Current Tag Focus: -

Row

1

Tag #

0001

Name

Co Name

Open the Tag Macro

Slide notes



Slide 19 - Slide 19

IES Client v8.29 : My IES

Help    Lookup    Back 1 Field    Restart Line Edit    Mini Menu    Submit Field    Quit Edit

1 Console

2 Pre Run

3 The Tags

4 Options

Tag Result Macros: -

>>>	Tags	Value Names	Exec It
1	0001	Co Name	1
2	0002	Period	1
3	0014	Stock Sales: Cur	1
4	0015	Stock Sales: Bud	1
5	0016	Stock Sales: YTD	1
6	0017	Stock Sales: YTD Bud	1
7	0018	Stock Sales: Ann Bud	1
8	0019	Interest Received: Cur	1
9	0020	Interest Received: Bud	1
10	0021	Interest Received: YTD	1
11	0022	Interest Received: YTD Bud	1
12	0023	Interest Received: Ann Bud	1
13	0024	Tot Revenue: Cur	2
14	0025	Tot Revenue: Bud	1
15	0026	Tot Revenue: YTD	1
16	0027	Tot Revenue: YTD Bud	1
17	0028	Tot Revenue: Ann Bud	1
18	0029	Rent: Cur	1
19	0030	Rent: Bud	1
20	0031	Rent: YTD	1
21	0032	Rent: YTD Bud	1
22	0033	Rent: Ann Bud	1
23	0034	Bad Debts: Cur	1
24	0035	Bad Debts: Bud	1
25	0036	Bad Debts: YTD	1

Nex

Pre

Add

Ins

Ed

Del

Where is that tag !

Select from Tag List

Search for Tag Number

Search for Tag Name

Current Tag Focus: -

Row

1

Tag #

0001

Name

Co Name

Open the Tag Macro

Slide notes

Slide 20 - Slide 20

IES Client v8.29 : My IES

Help Submit Quit Functions Commands

1 Console2 Pre Run3 The Tags4 Options

Tag Result Macros: -

>>> Tags	Value Names	Exec It
1 0001	Co Name	1
2 0002	Period	1
3 0014	Stock Sales: Cur	1
4 0015	Stock Sales: Bud	1
5 0016	Stock Sales: YTD	1
6 0017	Stock Sales: YTD Bud	1
7 0018	Stock Sales: Ann Bud	1
8 0019	Interest Received: Cur	1
9 0020	Interest Received: Bud	1
10 0021	Interest Received: YTD	1
11 0022	Interest Received: YTD Bud	1
12 0023	Interest Received: Ann Bud	1
13 0024	Tot Revenue: Cur	2
14 0025	Tot Revenue: Bud	1
15 0026	Tot Revenue: YTD	1
16 0027	Tot Revenue: YTD Bud	1
17 0028	Tot Revenue: Ann Bud	1
18 0029	Rent: Cur	1
19 0030	Rent: Bud	1
20 0031	Rent: YTD	1
21 0032	Rent: YTD Bud	1
22 0033	Rent: Ann Bud	1
23 0034	Bad Debts: Cur	1
24 0035	Bad Debts: Bud	1
25 0036	Bad Debts: YTD	1

NexPreAddInsEdDel

Where is that tag !

Select from Tag List

Search for Tag Number

Search for Tag Name

Current Tag Focus: -

Row1

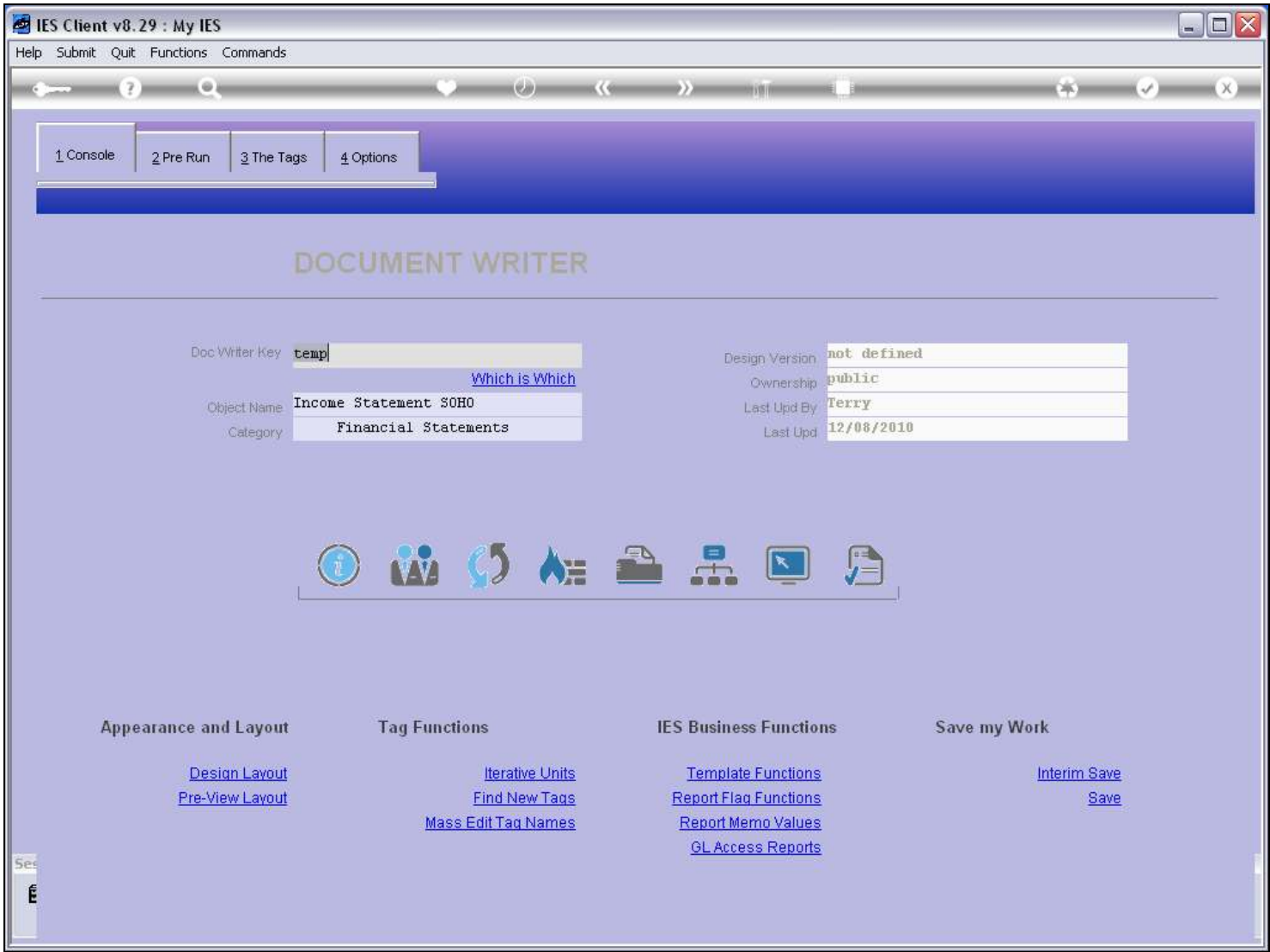
Tag #0001

NameCo Name

Open the Tag Macro

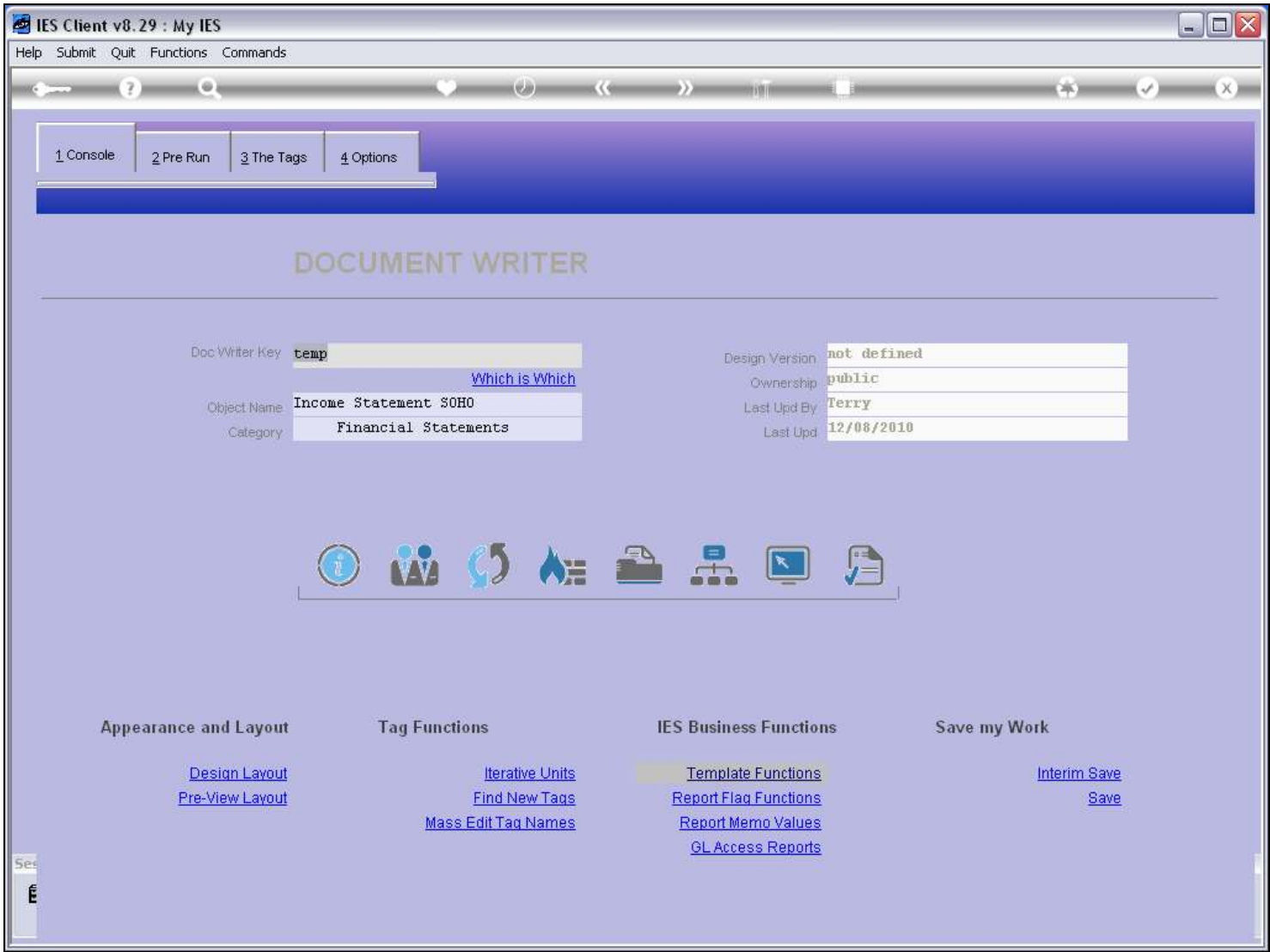
Slide notes

Slide 21 - Slide 21



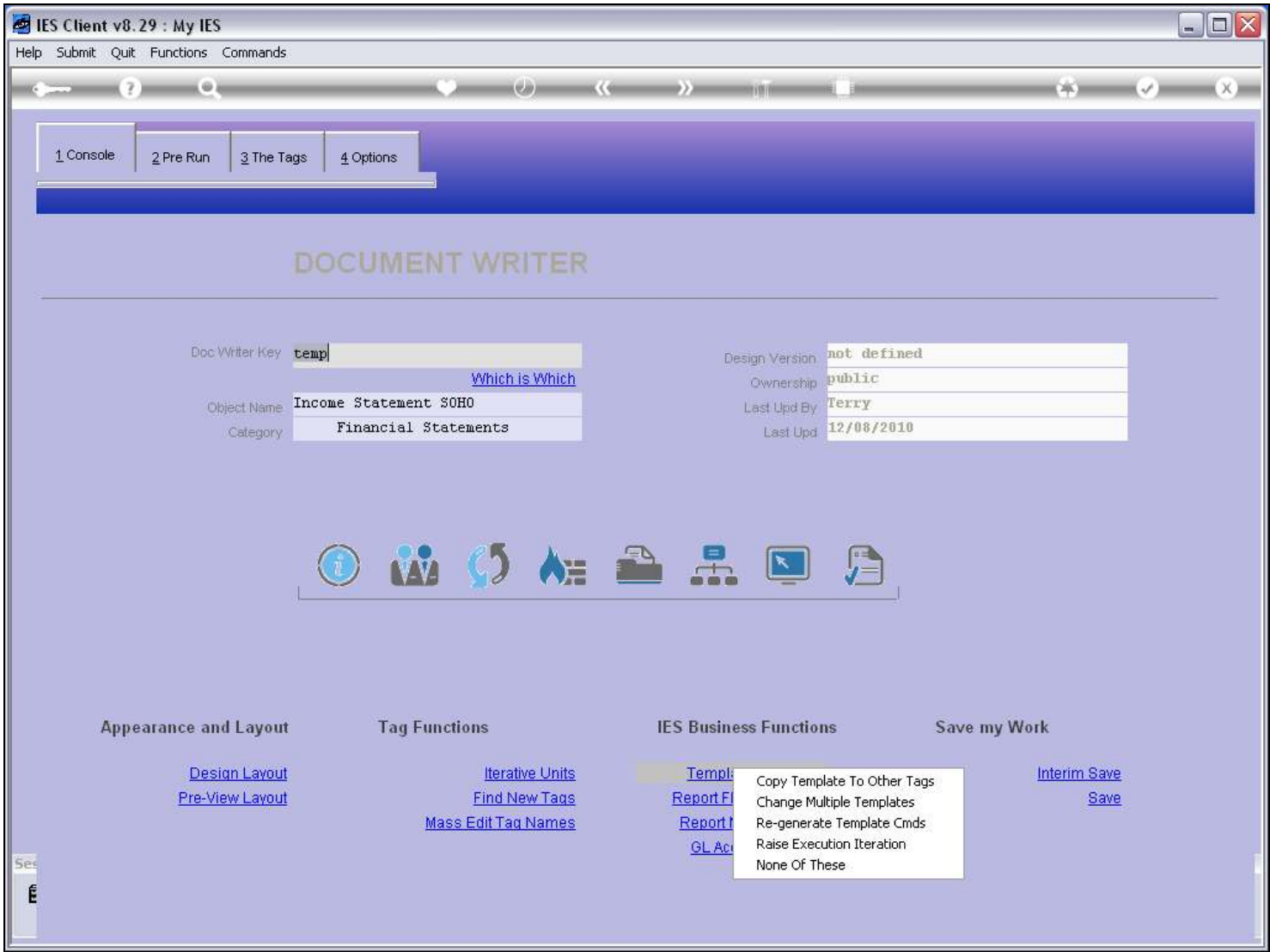
Slide notes

Slide 22 - Slide 22



Slide notes

Slide 23 - Slide 23

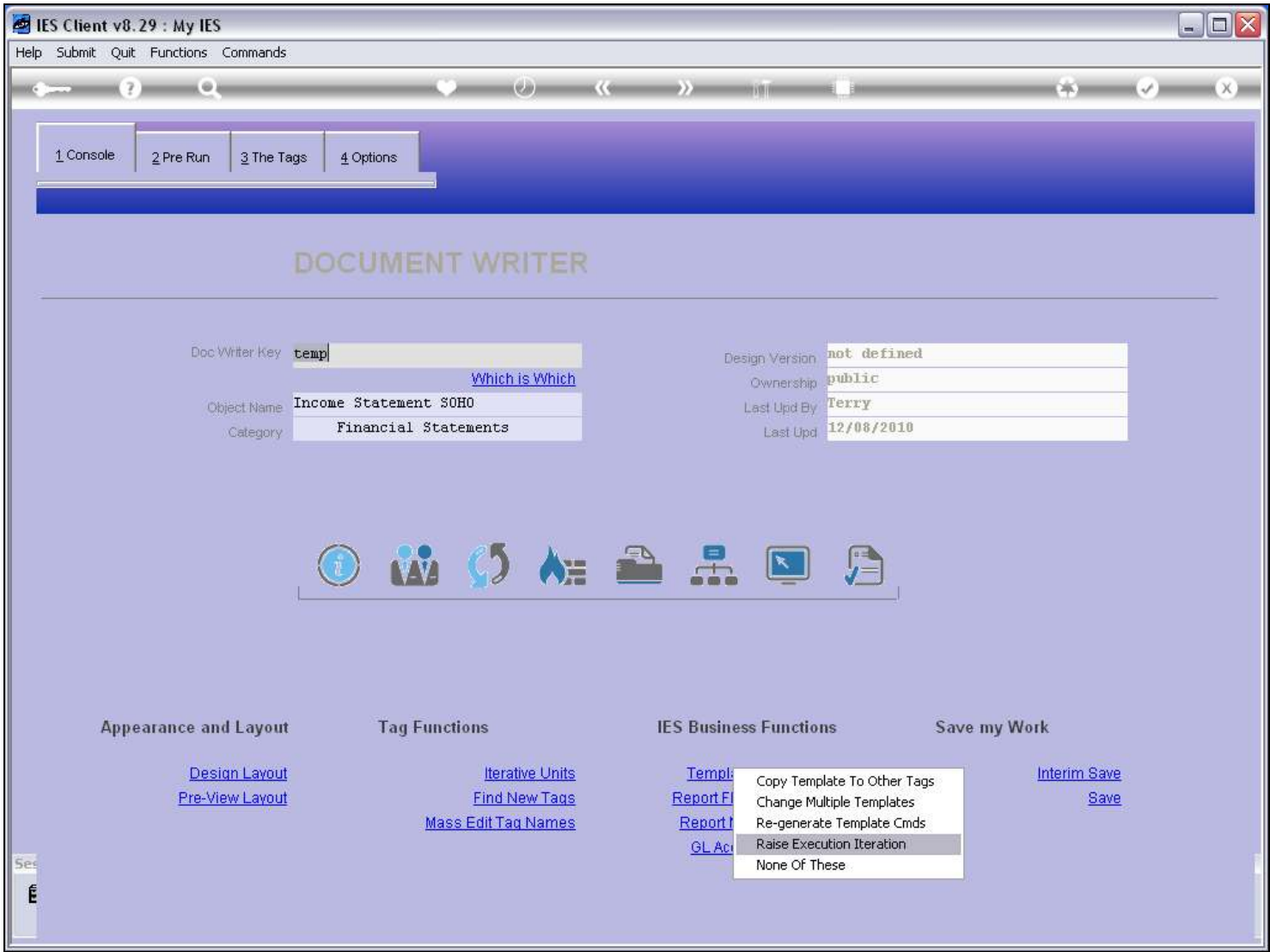


Slide notes

Execution Iteration can also be raised for many Tags with the Selection and Automatic functions.



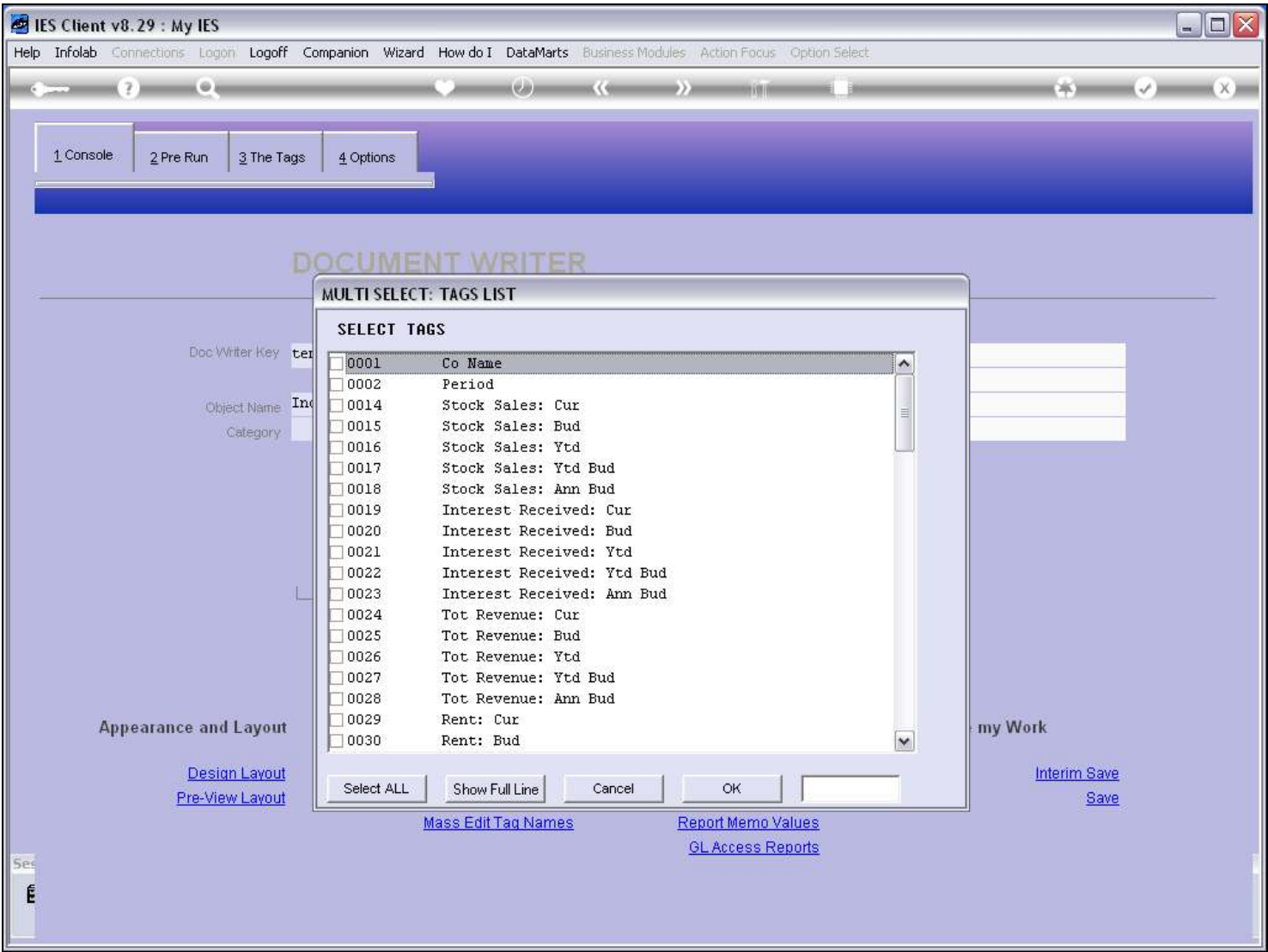
Slide 24 - Slide 24



Slide notes

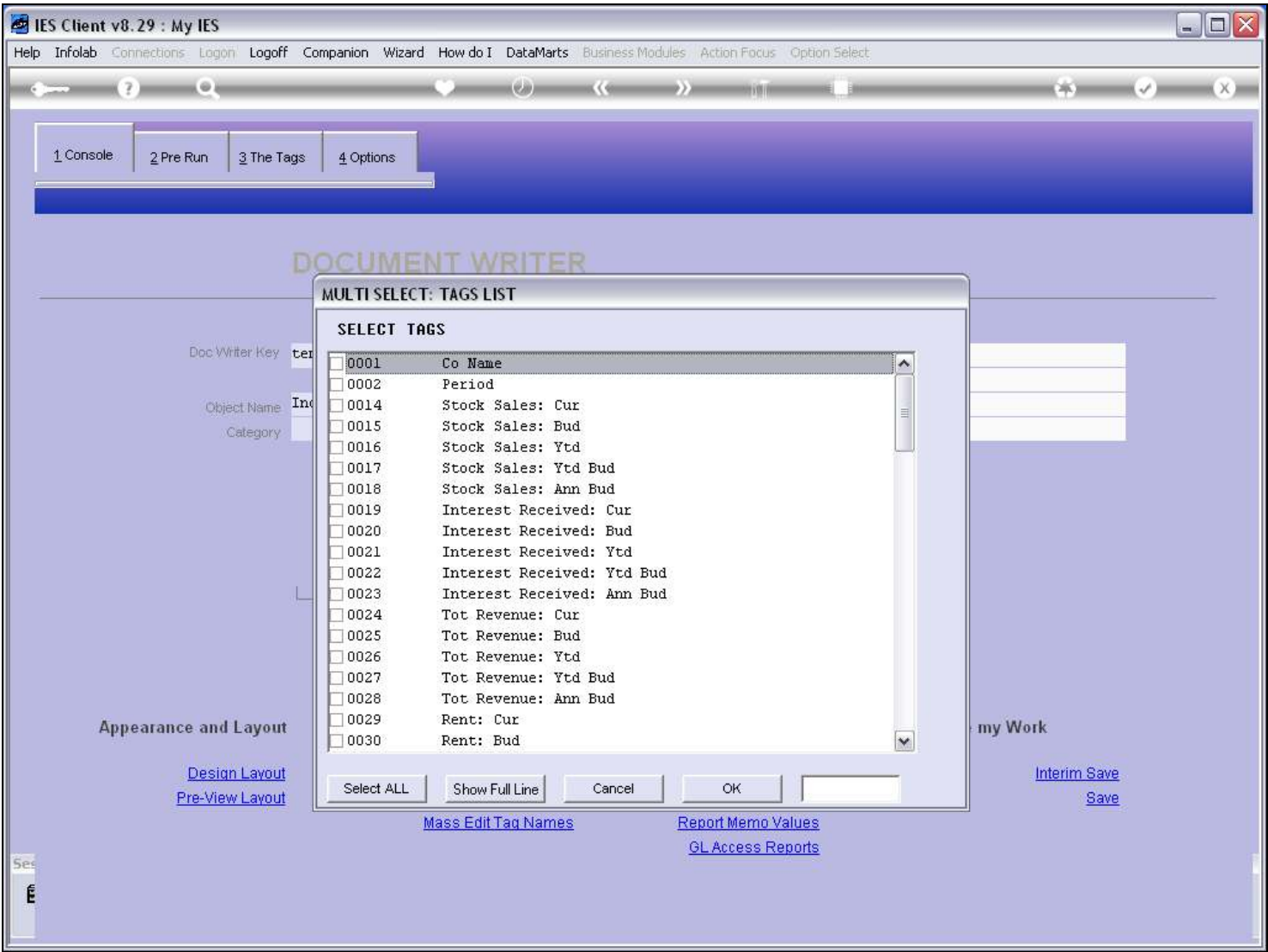
**Slide 25 - Slide 25****Slide notes**

Slide 26 - Slide 26



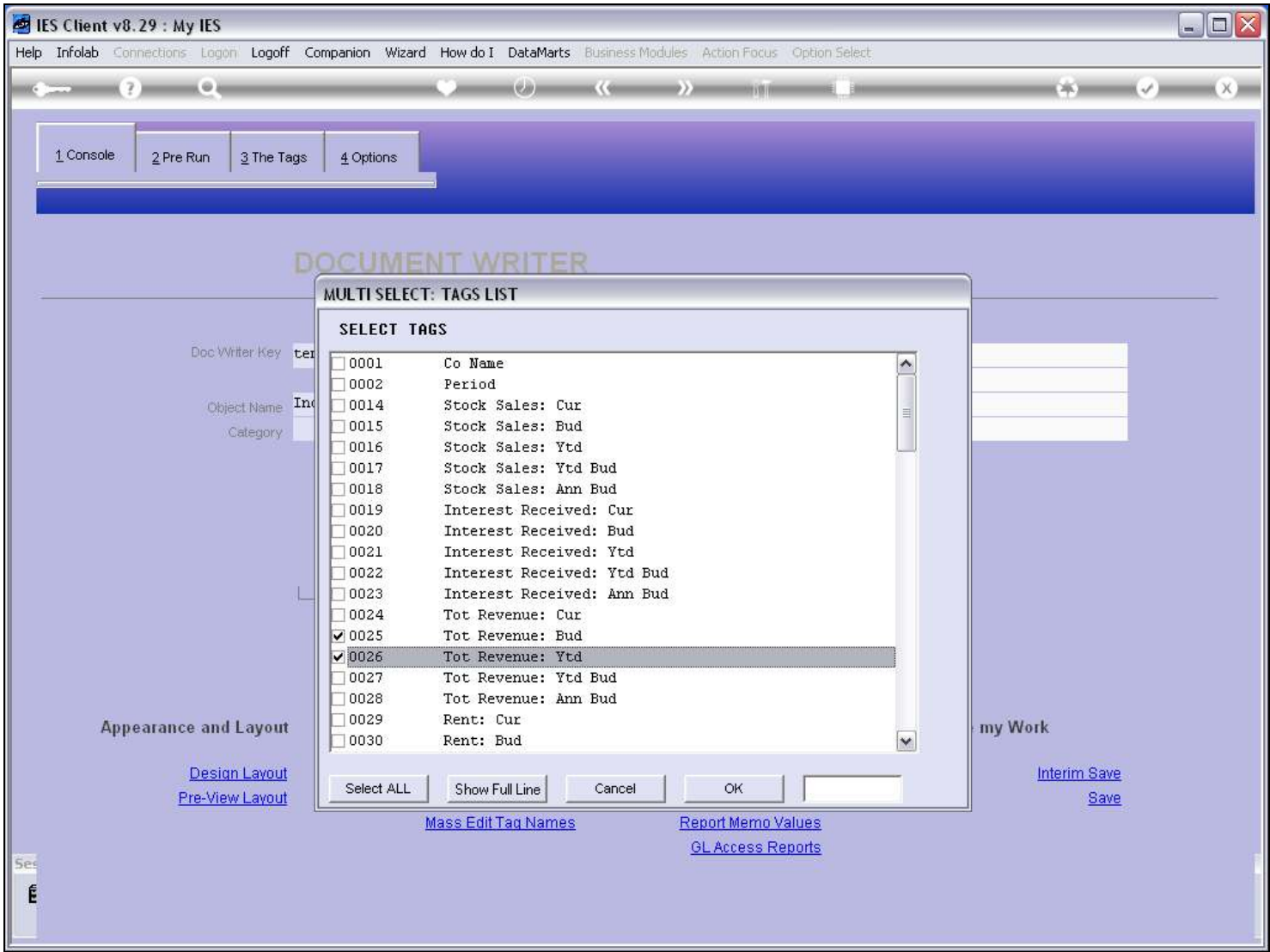
Slide notes

Slide 27 - Slide 27



Slide notes

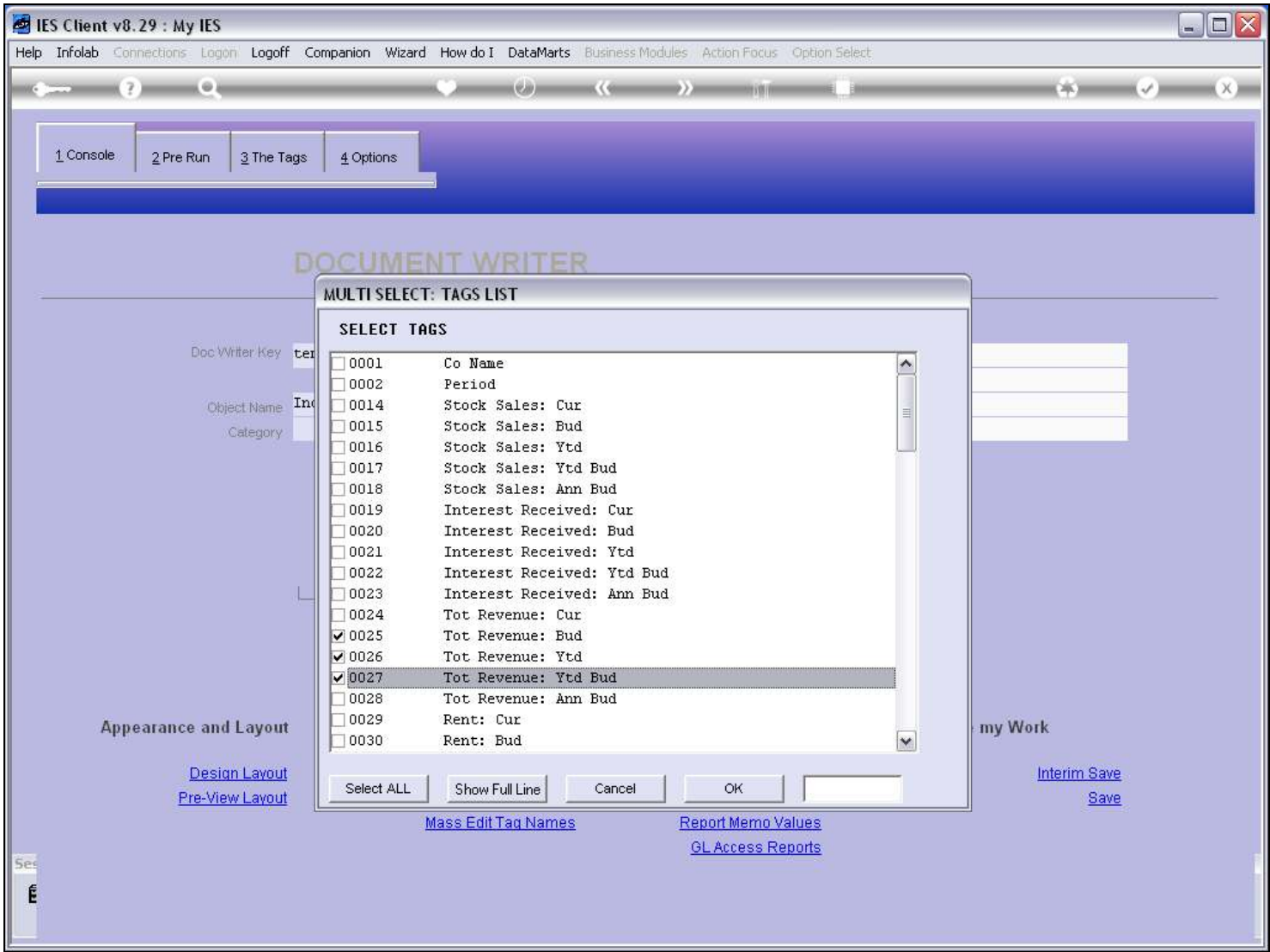
Slide 28 - Slide 28



Slide notes

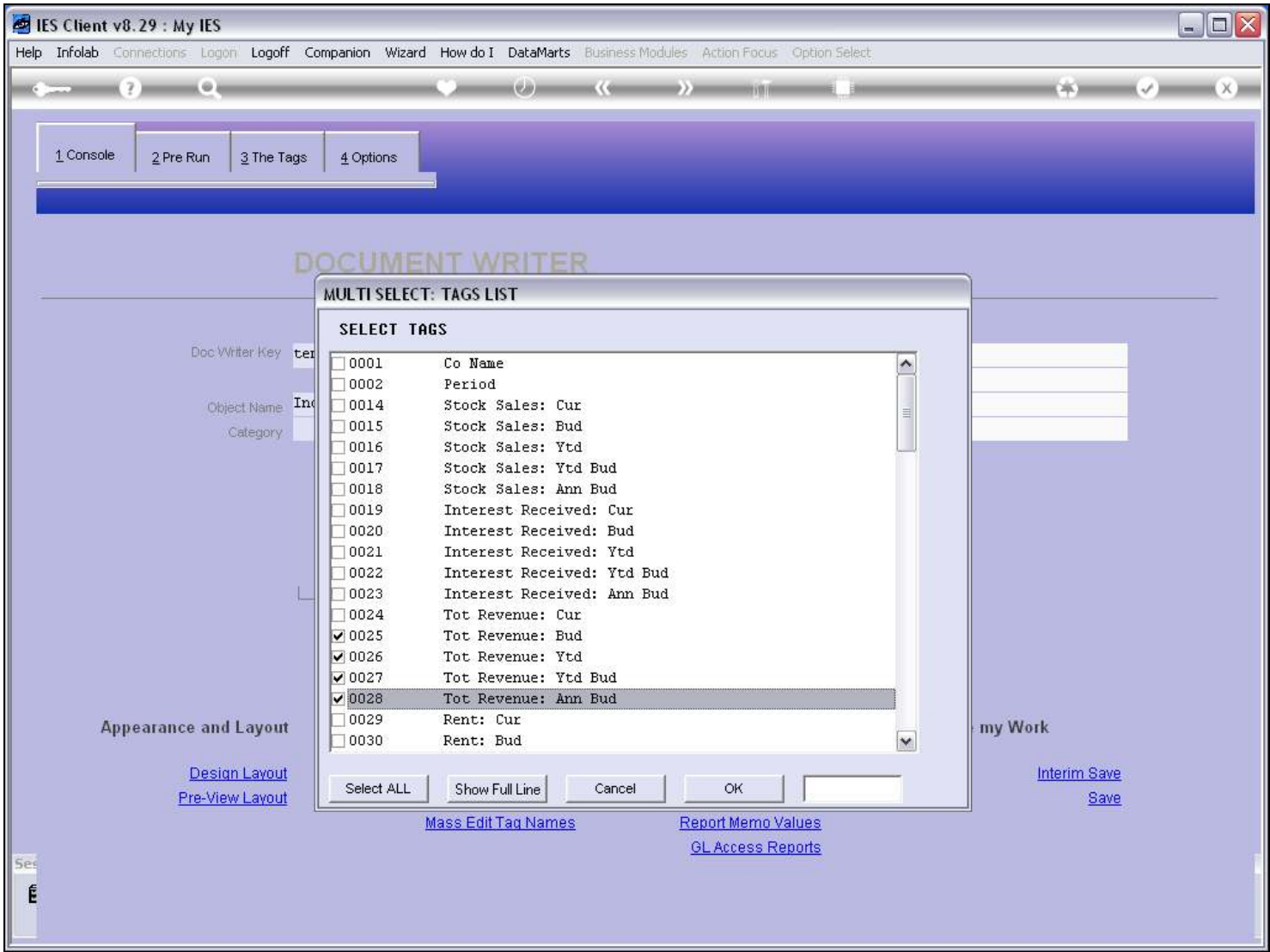


Slide 29 - Slide 29



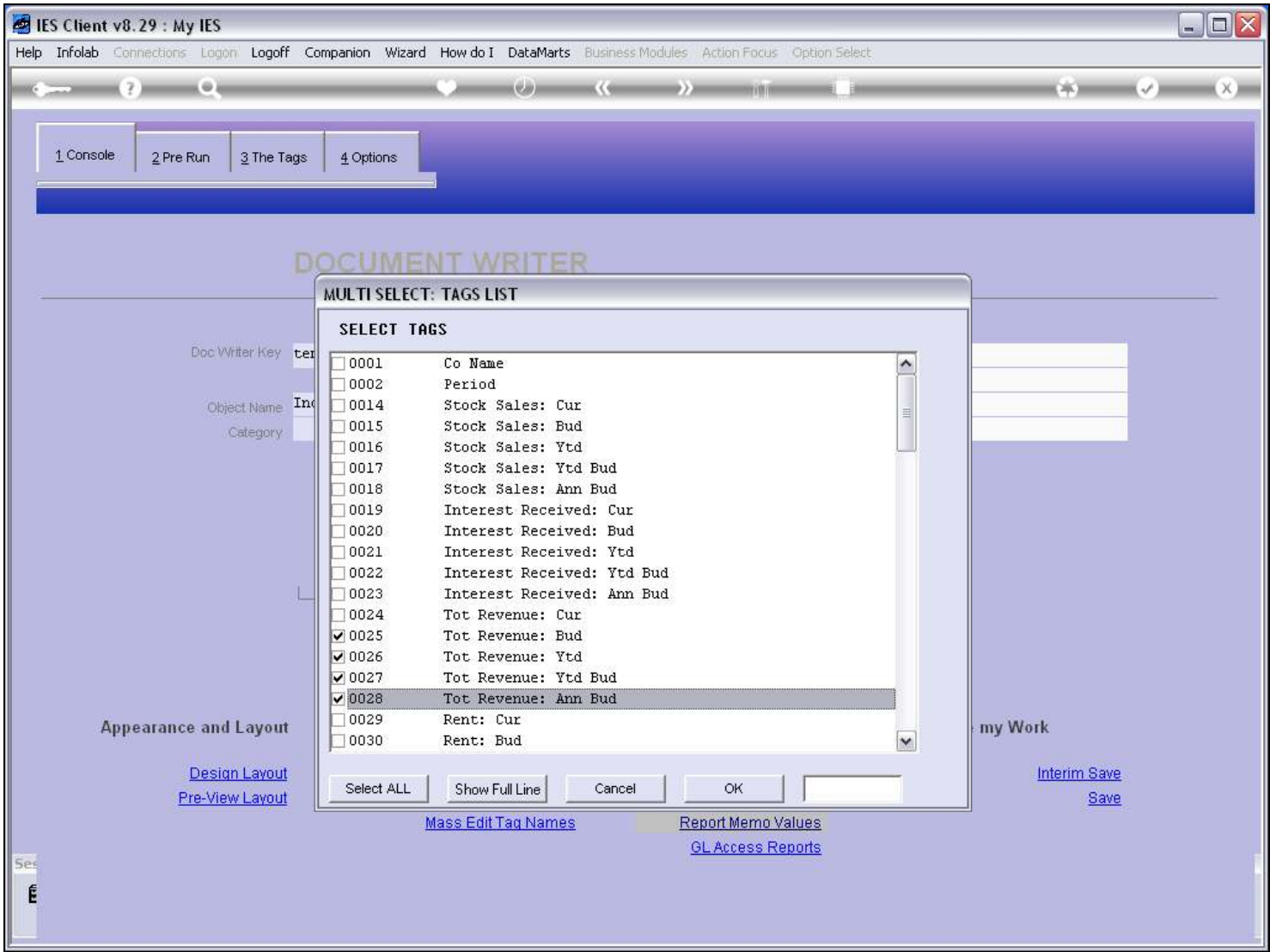
Slide notes

Slide 30 - Slide 30

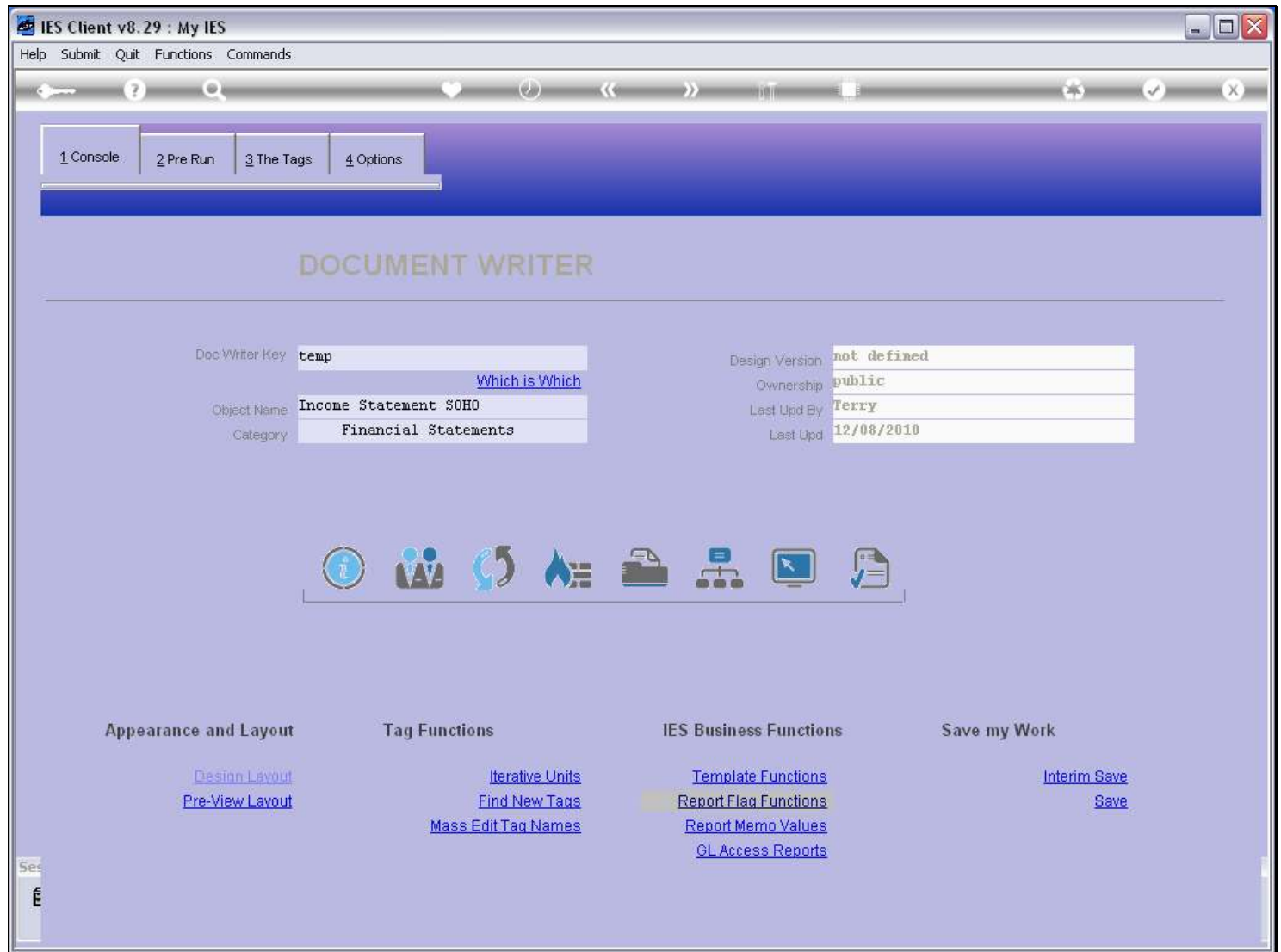


Slide notes

Slide 31 - Slide 31



Slide notes

**Slide 32 - Slide 32****Slide notes**

Slide 33 - Slide 33

IES Client v8.29 : My IES

Help Submit Quit Functions Commands

1 Console2 Pre Run3 The Tags4 Options

Tag Result Macros: -

>>> Tags	Value Names	Exec It
1 0001	Co Name	1
2 0002	Period	1
3 0014	Stock Sales: Cur	1
4 0015	Stock Sales: Bud	1
5 0016	Stock Sales: YTD	1
6 0017	Stock Sales: YTD Bud	1
7 0018	Stock Sales: Ann Bud	1
8 0019	Interest Received: Cur	1
9 0020	Interest Received: Bud	1
10 0021	Interest Received: YTD	1
11 0022	Interest Received: YTD Bud	1
12 0023	Interest Received: Ann Bud	1
13 0024	Tot Revenue: Cur	2
14 0025	Tot Revenue: Bud	2
15 0026	Tot Revenue: YTD	2
16 0027	Tot Revenue: YTD Bud	2
17 0028	Tot Revenue: Ann Bud	2
18 0029	Rent: Cur	1
19 0030	Rent: Bud	1
20 0031	Rent: YTD	1
21 0032	Rent: YTD Bud	1
22 0033	Rent: Ann Bud	1
23 0034	Bad Debts: Cur	1
24 0035	Bad Debts: Bud	1
25 0036	Bad Debts: YTD	1

NexPreAddInsEdDel

Where is that tag !

[Select from Tag List](#)

[Search for Tag Number](#)

[Search for Tag Name](#)

Current Tag Focus: -

Row1

Tag #0001

NameCo Name

[Open the Tag Macro](#)

Slide notes

Slide 34 - Slide 34

IES Client v8.29 : My IES

Help Submit Quit Functions Commands

1 Console2 Pre Run3 The Tags4 Options

Tag Result Macros :-

	>>> Tags	Value Names	Exec It
1	0001	Co Name	1
2	0002	Period	1
3	0014	Stock Sales: Cur	1
4	0015	Stock Sales: Bud	1
5	0016	Stock Sales: YTD	1
6	0017	Stock Sales: YTD Bud	1
7	0018	Stock Sales: Ann Bud	1
8	0019	Interest Received: Cur	1
9	0020	Interest Received: Bud	1
10	0021	Interest Received: YTD	1
11	0022	Interest Received: YTD Bud	1
12	0023	Interest Received: Ann Bud	1
13	0024	Tot Revenue: Cur	2
14	0025	Tot Revenue: Bud	2
15	0026	Tot Revenue: YTD	2
16	0027	Tot Revenue: YTD Bud	2
17	0028	Tot Revenue: Ann Bud	2
18	0029	Rent: Cur	1
19	0030	Rent: Bud	1
20	0031	Rent: YTD	1
21	0032	Rent: YTD Bud	1
22	0033	Rent: Ann Bud	1
23	0034	Bad Debts: Cur	1
24	0035	Bad Debts: Bud	1
25	0036	Bad Debts: YTD	1

NexPreAddInsEdDel

Where is that tag !

Select from Tag List

Search for Tag Number

Search for Tag Name

Current Tag Focus: -

Row1

Tag #0001

NameCo Name

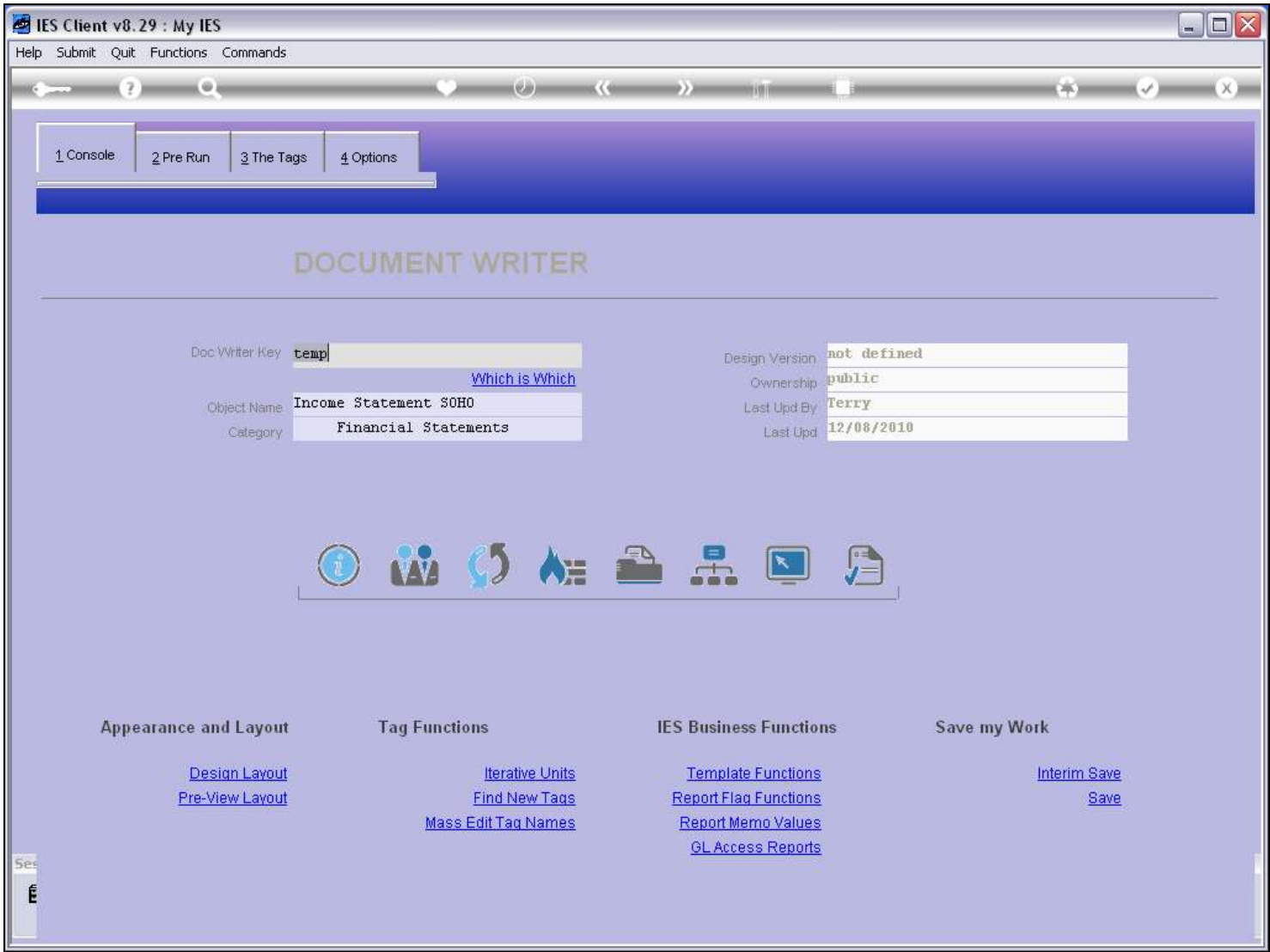
The Tag Number is usually inserted by the system when the 'Tag Numbering' option is used.

Open the Tag Macro

Slide notes

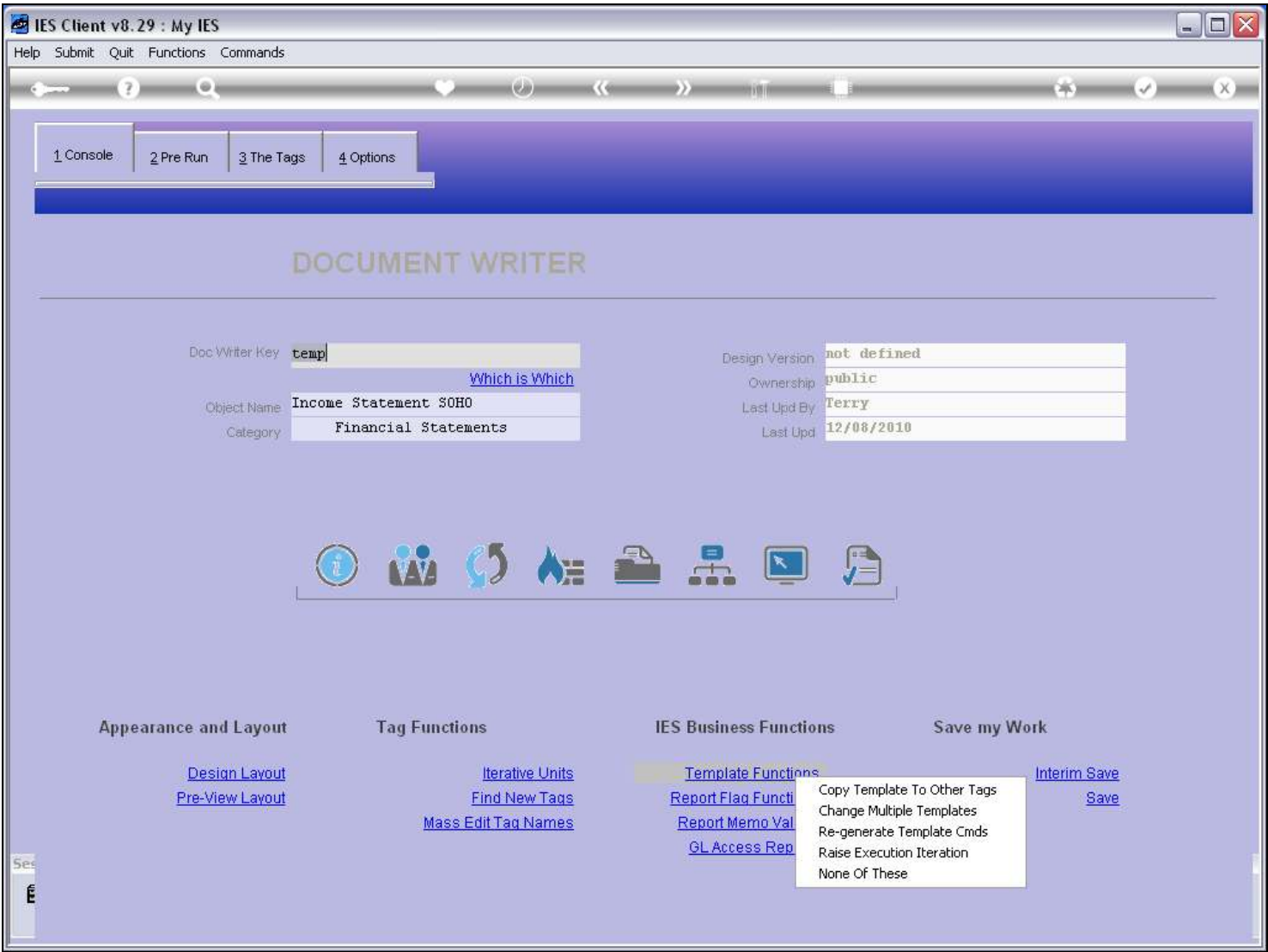


Slide 35 - Slide 35



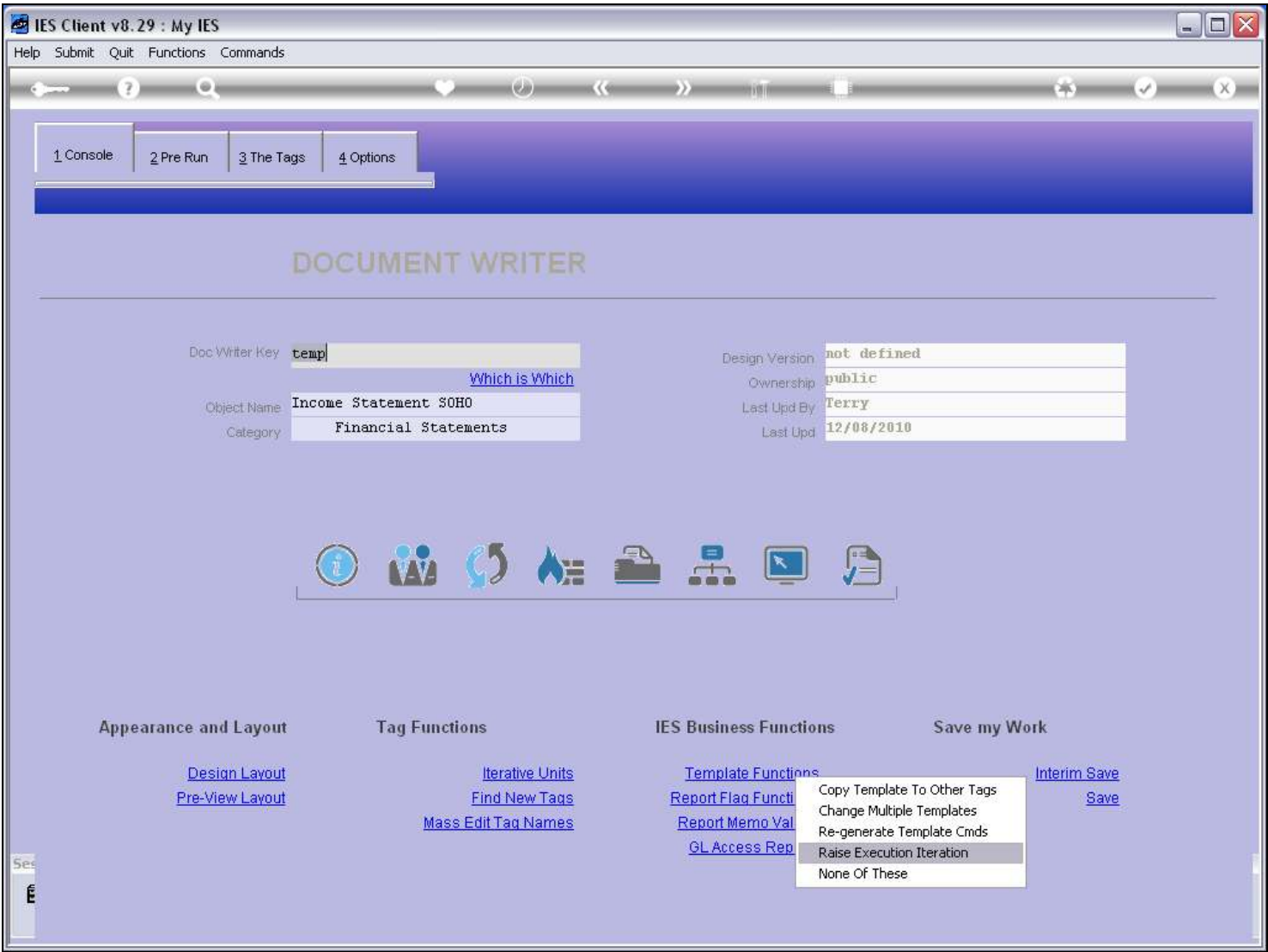
Slide notes

Slide 36 - Slide 36



Slide notes

Slide 37 - Slide 37

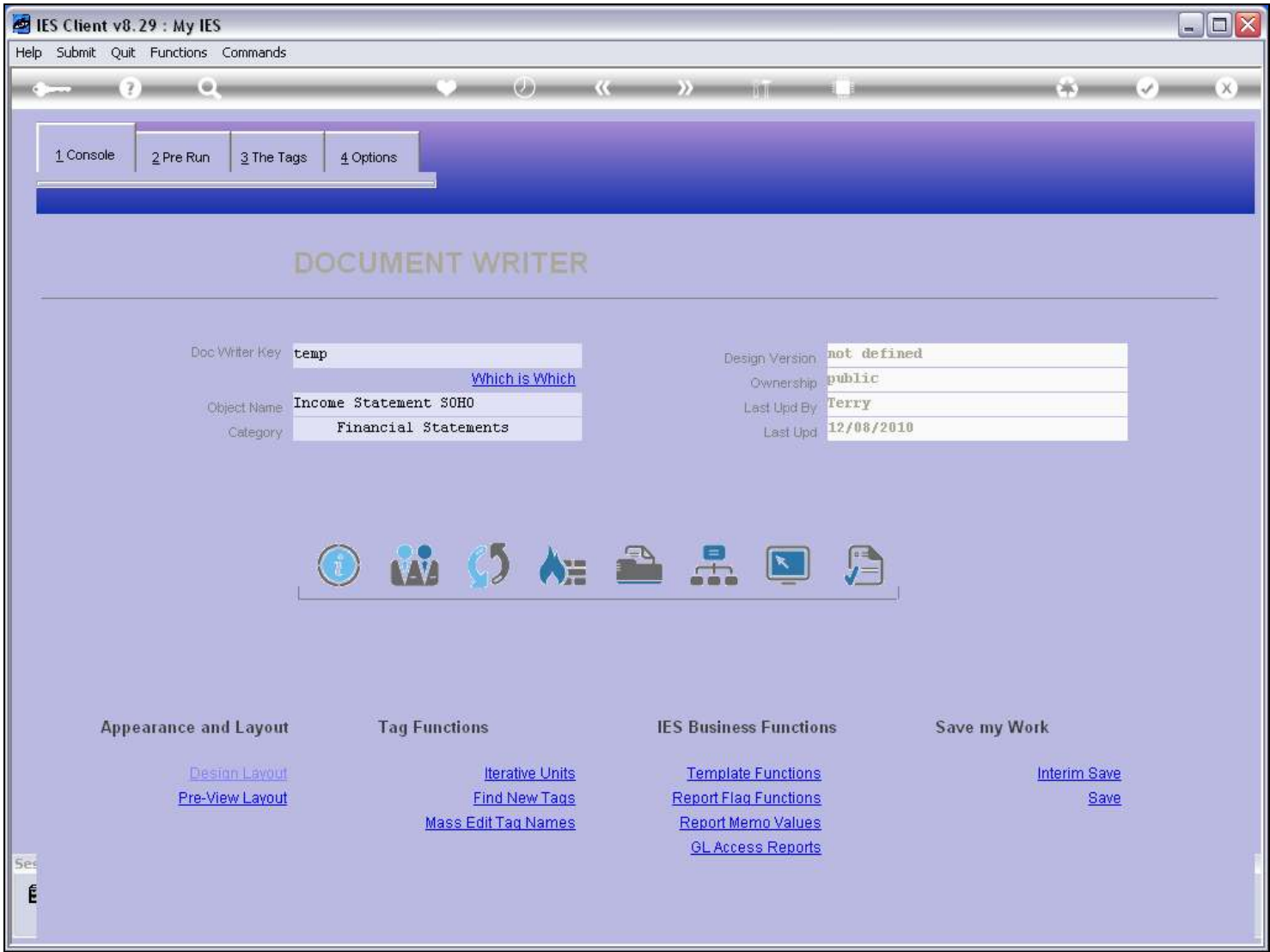


Slide notes

**Slide 38 - Slide 38****Slide notes**

The Automatic function raises all Tags that depend on other Tags.

Slide 39 - Slide 39



Slide notes

Slide 40 - Slide 40

IES Client v8.29 : My IES

Help Submit Quit Functions Commands

1 Console2 Pre Run3 The Tags4 Options

Tag Result Macros: -

	>>> Tags	Value Names	Exec It
1	0001	Co Name	1
2	0002	Period	1
3	0014	Stock Sales: Cur	1
4	0015	Stock Sales: Bud	1
5	0016	Stock Sales: YTD	1
6	0017	Stock Sales: YTD Bud	1
7	0018	Stock Sales: Ann Bud	1
8	0019	Interest Received: Cur	1
9	0020	Interest Received: Bud	1
10	0021	Interest Received: YTD	1
11	0022	Interest Received: YTD Bud	1
12	0023	Interest Received: Ann Bud	1
13	0024	Tot Revenue: Cur	3
14	0025	Tot Revenue: Bud	3
15	0026	Tot Revenue: YTD	3
16	0027	Tot Revenue: YTD Bud	3
17	0028	Tot Revenue: Ann Bud	3
18	0029	Rent: Cur	1
19	0030	Rent: Bud	1
20	0031	Rent: YTD	1
21	0032	Rent: YTD Bud	1
22	0033	Rent: Ann Bud	1
23	0034	Bad Debts: Cur	1
24	0035	Bad Debts: Bud	1
25	0036	Bad Debts: YTD	1

NexPreAddInsEdDel

Where is that tag !

Select from Tag List

Search for Tag Number

Search for Tag Name

Current Tag Focus: -

Row1

Tag #0001

NameCo Name

Open the Tag Macro

Slide notes



## Slide 41 - Slide 41

IES Client v8.29 : My IES

Help Submit Quit Functions Commands

1 Console 2 Pre Run 3 The Tags 4 Options

Tag Result Macros: -

>>> Tags	Value Names	Exec It
1 0001	Co Name	1
2 0002	Period	1
3 0014	Stock Sales: Cur	1
4 0015	Stock Sales: Bud	1
5 0016	Stock Sales: YTD	1
6 0017	Stock Sales: YTD Bud	1
7 0018	Stock Sales: Ann Bud	1
8 0019	Interest Received: Cur	1
9 0020	Interest Received: Bud	1
10 0021	Interest Received: YTD	1
11 0022	Interest Received: YTD Bud	1
12 0023	Interest Received: Ann Bud	1
13 0024	Tot Revenue: Cur	3
14 0025	Tot Revenue: Bud	3
15 0026	Tot Revenue: YTD	3
16 0027	Tot Revenue: YTD Bud	3
17 0028	Tot Revenue: Ann Bud	3
18 0029	Rent: Cur	1
19 0030	Rent: Bud	1
20 0031	Rent: YTD	1
21 0032	Rent: YTD Bud	1
22 0033	Rent: Ann Bud	1
23 0034	Bad Debts: Cur	1
24 0035	Bad Debts: Bud	1
25 0036	Bad Debts: YTD	1

Where is that tag !

[Select from Tag List](#)

[Search for Tag Number](#)

[Search for Tag Name](#)

Current Tag Focus: -

Row

Name

[Open the Tag Macro](#)

The Tag Number is usually inserted by the system when the 'Tag Numbering' option is used.

Nex Pre Add Ins Ed Del

## Slide notes

Bear in mind though, that there may still be cases of Tags that depend on Others that also depend on Others, in which case we still need to raise some of them Manually or by Selection.