

Slide 1 - Slide 1

D1557131140.htm - Microsoft Excel

	A	B	C	D	E	F	G	H	I	J	K	L
1												
2												
3												
4												
5		Actual Current	Budget		Actual YTD	Budget YTD		Annual Budget				
6												
7												
8												
9												
10												
11	Revenue											
12	Stock Sales	[0014]	[0015]		[0016]	[0017]		[0018]				
13	Other	[0019]	[0020]		[0021]	[0022]		[0023]				
14	Total Revenue	[0024]	[0025]		[0026]	[0027]		[0028]				
15												
16	Costs											
17	Rent and Utilities	[0029]	[0030]		[0031]	[0032]		[0033]				
18	Bad Debts	[0034]	[0035]		[0036]	[0037]		[0038]				
19	Staff Costs	[0039]	[0040]		[0041]	[0042]		[0043]				
20	Office Costs	[0044]	[0045]		[0046]	[0047]		[0048]				
21	Audit Fees	[0049]	[0050]		[0051]	[0052]		[0053]				
22	Computer Systems	[0054]	[0055]		[0056]	[0057]		[0058]				
23	Equipment Maintenance	[0059]	[0060]		[0061]	[0062]		[0063]				
24	Sundry Expenses	[0064]	[0065]		[0066]	[0067]		[0068]				
25	Total Cost of Sales	[0069]	[0070]		[0071]	[0072]		[0073]				
26	[0084]											
27	[0085]Gross Profit	[0074]	[0075]		[0076]	[0077]		[0078]		[0086]		
28												
29	[0087]Gross Loss	[0079]	[0080]		[0081]	[0082]		[0083]		[0088]		
30	[0097] [0091] [0092] [0093] [0094] [0095] [0096] [0098]											
31												
32												
33												
34												

Slide notes

This is a Report Layout in progress. Whether we are busy with the 1st or any subsequent Layout Design session on the Report, we create Tags only by inserting 2 pipe symbols next to each other, wherever we want to have a Tag. The Tags that we see here have been inserted before, and was subsequently numbered by DocWriter.

Slide 2 - Slide 2

D1557131140.htm - Microsoft Excel												
Home Insert Page Layout Formulas Data Review View Add-Ins												
Clipboard Font Alignment Number Styles Cells												
B7												
	A	B	C	D	E	F	G	H	I	J	K	L
1												
2	[0001]											
3	Profit and Loss (Income Statement) for [0002]											
4												
5		Actual Current	Budget		Actual YTD	Budget YTD		Annual Budget				
6												
7												
8												
9												
10												
11	Revenue											
12	Stock Sales	[0014]	[0015]		[0016]	[0017]		[0018]				
13	Other	[0019]	[0020]		[0021]	[0022]		[0023]				
14	Total Revenue	[0024]	[0025]		[0026]	[0027]		[0028]				
15												
16	Costs											
17	Rent and Utilities	[0029]	[0030]		[0031]	[0032]		[0033]				
18	Bad Debts	[0034]	[0035]		[0036]	[0037]		[0038]				
19	Staff Costs	[0039]	[0040]		[0041]	[0042]		[0043]				
20	Office Costs	[0044]	[0045]		[0046]	[0047]		[0048]				
21	Audit Fees	[0049]	[0050]		[0051]	[0052]		[0053]				
22	Computer Systems	[0054]	[0055]		[0056]	[0057]		[0058]				
23	Equipment Maintenance	[0059]	[0060]		[0061]	[0062]		[0063]				
24	Sundry Expenses	[0064]	[0065]		[0066]	[0067]		[0068]				
25	Total Cost of Sales	[0069]	[0070]		[0071]	[0072]		[0073]				
26	[0084]											
27	[0085]Gross Profit	[0074]	[0075]		[0076]	[0077]		[0078]	[0086]			
28												
29	[0087]Gross Loss	[0079]	[0080]		[0081]	[0082]		[0083]	[0088]			
30	[0097] [0091] [0092] [0093] [0094] [0095] [0096] [0098]											
31												
32												
33												
34												

Slide notes

Slide 3 - Slide 3

D1557131140.htm - Microsoft Excel

	A	B	C	D	E	F	G	H	I	J	K	L
1												
2												
3												
4												
5		Actual Current	Budget		Actual YTD	Budget YTD		Annual Budget				
6												
7												
8												
9												
10												
11	Revenue											
12	Stock Sales	0014	0015		0016	0017		0018				
13	Other	0019	0020		0021	0022		0023				
14	Total Revenue	0024	0025		0026	0027		0028				
15												
16	Costs											
17	Rent and Utilities	0029	0030		0031	0032		0033				
18	Bad Debts	0034	0035		0036	0037		0038				
19	Staff Costs	0039	0040		0041	0042		0043				
20	Office Costs	0044	0045		0046	0047		0048				
21	Audit Fees	0049	0050		0051	0052		0053				
22	Computer Systems	0054	0055		0056	0057		0058				
23	Equipment Maintenance	0059	0060		0061	0062		0063				
24	Sundry Expenses	0064	0065		0066	0067		0068				
25	Total Cost of Sales	0069	0070		0071	0072		0073				
26	0084											
27	0085 Gross Profit	0074	0075		0076	0077		0078	0086			
28												
29	0087 Gross Loss	0079	0080		0081	0082		0083	0088			
30	0097 0091 0092 0093 0094 0095 0096 0098											
31												
32												
33												
34												

Slide notes

Slide 4 - Slide 4

D1557131140.htm - Microsoft Excel

	A	B	C	D	E	F	G	H	I	J	K	L
1												
2												
3												
4												
5		Actual Current	Budget		Actual YTD	Budget YTD		Annual Budget				
6												
7												
8												
9												
10												
11	Revenue											
12	Stock Sales	[0014]	[0015]		[0016]	[0017]		[0018]				
13	Other	[0019]	[0020]		[0021]	[0022]		[0023]				
14	Total Revenue	[0024]	[0025]		[0026]	[0027]		[0028]				
15												
16	Costs											
17	Rent and Utilities	[0029]	[0030]		[0031]	[0032]		[0033]				
18	Bad Debts	[0034]	[0035]		[0036]	[0037]		[0038]				
19	Staff Costs	[0039]	[0040]		[0041]	[0042]		[0043]				
20	Office Costs	[0044]	[0045]		[0046]	[0047]		[0048]				
21	Audit Fees	[0049]	[0050]		[0051]	[0052]		[0053]				
22	Computer Systems	[0054]	[0055]		[0056]	[0057]		[0058]				
23	Equipment Maintenance	[0059]	[0060]		[0061]	[0062]		[0063]				
24	Sundry Expenses	[0064]	[0065]		[0066]	[0067]		[0068]				
25	Total Cost of Sales	[0069]	[0070]		[0071]	[0072]		[0073]				
26	[0084]											
27	[0085]Gross Profit	[0074]	[0075]		[0076]	[0077]		[0078]	[0086]			
28												
29	[0087]Gross Loss	[0079]	[0080]		[0081]	[0082]		[0083]	[0088]			
30	[0097] [0091] [0092] [0093] [0094] [0095] [0096] [0098]											
31												
32												
33												
34												

Slide notes

Slide 5 - Slide 5

D1557131140.htm - Microsoft Excel

Home Insert Page Layout Formulas Data Review View Add-Ins

Clipboard Font Alignment Number Styles Cells

E12 |0016|

	A	B	C	D	E	F	G	H	I	J	K	L
1												
2												
3												
4												
5		Actual Current	Budget		Actual YTD	Budget YTD		Annual Budget				
6												
7												
8												
9												
10												
11		Revenue										
12		Stock Sales	0014	0015	0016	0017		0018				
13		Other	0019	0020	0021	0022		0023				
14		Total Revenue	0024	0025	0026	0027		0028				
15												
16		Costs										
17		Rent and Utilities	0029	0030	0031	0032		0033				
18		Bad Debts	0034	0035	0036	0037		0038				
19		Staff Costs	0039	0040	0041	0042		0043				
20		Office Costs	0044	0045	0046	0047		0048				
21		Audit Fees	0049	0050	0051	0052		0053				
22		Computer Systems	0054	0055	0056	0057		0058				
23		Equipment Maintenance	0059	0060	0061	0062		0063				
24		Sundry Expenses	0064	0065	0066	0067		0068				
25		Total Cost of Sales	0069	0070	0071	0072		0073				
26		0084										
27		0085 Gross Profit	0074	0075	0076	0077		0078	0086			
28												
29		0087 Gross Loss	0079	0080	0081	0082		0083	0088			
30		0097 0091 0092 0093 0094 0095 0096 0098										
31												
32												
33												
34												

Slide notes

Slide 6 - Slide 6

D1557131140.htm - Microsoft Excel

	A	B	C	D	E	F	G	H	I	J	K	L
1												
2												
3												
4												
5		Actual Current	Budget		Actual YTD	Budget YTD		Annual Budget				
6												
7												
8												
9												
10												
11	Revenue											
12	Stock Sales	[0014]	[0015]	renumber a Tag	[0016]	[0017]		[0018]				
13	Other	[0019]	[0020]		[0021]	[0022]		[0023]				
14	Total Revenue	[0024]	[0025]		[0026]	[0027]		[0028]				
15												
16	Costs											
17	Rent and Utilities	[0029]	[0030]		[0031]	[0032]		[0033]				
18	Bad Debts	[0034]	[0035]		[0036]	[0037]		[0038]				
19	Staff Costs	[0039]	[0040]		[0041]	[0042]		[0043]				
20	Office Costs	[0044]	[0045]		[0046]	[0047]		[0048]				
21	Audit Fees	[0049]	[0050]		[0051]	[0052]		[0053]				
22	Computer Systems	[0054]	[0055]		[0056]	[0057]		[0058]				
23	Equipment Maintenance	[0059]	[0060]		[0061]	[0062]		[0063]				
24	Sundry Expenses	[0064]	[0065]		[0066]	[0067]		[0068]				
25	Total Cost of Sales	[0069]	[0070]		[0071]	[0072]		[0073]				
26	[0084]											
27	[0085]Gross Profit	[0074]	[0075]		[0076]	[0077]		[0078]	[0086]			
28												
29	[0087]Gross Loss	[0079]	[0080]		[0081]	[0082]		[0083]	[0088]			
30	[0097] [0091] [0092] [0093] [0094] [0095] [0096] [0098]											
31												
32												
33												
34												

Slide notes

It is allowed to delete a Tag from the Layout, and it is the correct way to be rid of a Tag that is no longer wanted.

Slide 7 - Slide 7

D1557131140.htm - Microsoft Excel

	A	B	C	D	E	F	G	H	I	J	K	L
1												
2												
3												
4												
5		Actual Current	Budget		Actual YTD	Budget YTD		Annual Budget				
6												
7												
8												
9												
10												
11	Revenue											
12	Stock Sales	0014	0015	renumber a Tag 16		0017		0018				
13	Other	0019	0020			0022		0023				
14	Total Revenue	0024	0025		0026	0027		0028				
15												
16	Costs											
17	Rent and Utilities	0029	0030		0031	0032		0033				
18	Bad Debts	0034	0035		0036	0037		0038				
19	Staff Costs	0039	0040		0041	0042		0043				
20	Office Costs	0044	0045		0046	0047		0048				
21	Audit Fees	0049	0050		0051	0052		0053				
22	Computer Systems	0054	0055		0056	0057		0058				
23	Equipment Maintenance	0059	0060		0061	0062		0063				
24	Sundry Expenses	0064	0065		0066	0067		0068				
25	Total Cost of Sales	0069	0070		0071	0072		0073				
26	0084											
27	0085 Gross Profit	0074	0075		0076	0077		0078	0086			
28												
29	0087 Gross Loss	0079	0080		0081	0082		0083	0088			
30	0097 0091 0092 0093 0094 0095 0096 0098											
31												
32												
33												
34												

Slide notes

Slide 8 - Slide 8

D1557131140.htm - Microsoft Excel

	A	B	C	D	E	F	G	H	I	J	K	L
1												
2												
3												
4												
5		Actual Current	Budget		Actual YTD	Budget YTD		Annual Budget				
6												
7												
8												
9												
10												
11												
12												
13												
14												
15												
16												
17												
18												
19												
20												
21												
22												
23												
24												
25												
26												
27												
28												
29												
30												
31												
32												
33												
34												

Slide notes

Slide 9 - Slide 9

D1557131140.htm - Microsoft Excel

	A	B	C	D	E	F	G	H	I	J	K	L
1												
2												
3												
4												
5		Actual Current	Budget		Actual YTD	Budget YTD		Annual Budget				
6												
7												
8												
9												
10												
11	Revenue											
12	Stock Sales	[0014]	[0015]	renumber a Tag[16]		[0017]		[0018]				
13	Other	[0019]	[0020]			[0022]		[0023]				
14	Total Revenue	[0024]	[0025]	[0026]		[0027]		[0028]				
15												
16	Costs											
17	Rent and Utilities	[0029]	[0030]		[0031]	[0032]		[0033]				
18	Bad Debts	[0034]	[0035]		[0036]	[0037]		[0038]				
19	Staff Costs	[0039]	[0040]		[0041]	[0042]		[0043]				
20	Office Costs	[0044]	[0045]		[0046]	[0047]		[0048]				
21	Audit Fees	[0049]	[0050]		[0051]	[0052]		[0053]				
22	Computer Systems	[0054]	[0055]		[0056]	[0057]		[0058]				
23	Equipment Maintenance	[0059]	[0060]		[0061]	[0062]		[0063]				
24	Sundry Expenses	[0064]	[0065]		[0066]	[0067]		[0068]				
25	Total Cost of Sales	[0069]	[0070]		[0071]	[0072]		[0073]				
26	[0084]											
27	[0085]Gross Profit	[0074]	[0075]		[0076]	[0077]		[0078]	[0086]			
28												
29	[0087]Gross Loss	[0079]	[0080]		[0081]	[0082]		[0083]	[0088]			
30	[0097] [0091] [0092] [0093] [0094] [0095] [0096] [0098]											
31												
32												
33												
34												

Slide notes

Slide 10 - Slide 10

D1557131140.htm - Microsoft Excel

	A	B	C	D	E	F	G	H	I	J	K	L
1												
2												
3												
4												
5		Actual Current	Budget		Actual YTD	Budget YTD		Annual Budget				
6												
7												
8												
9												
10												
11												
12												
13												
14												
15												
16												
17												
18												
19												
20												
21												
22												
23												
24												
25												
26												
27												
28												
29												
30												
31												
32												
33												
34												

Slide notes

Slide 11 - Slide 11

D1557131140.htm - Microsoft Excel

	A	B	C	D	E	F	G	H	I	J	K	L
1												
2												
3												
4												
5		Actual Current	Budget		Actual YTD	Budget YTD		Annual Budget				
6												
7												
8												
9												
10												
11	Revenue											
12	Stock Sales	[0014]	[0015]	renumber a Tag	[0016]	[0017]		[0018]				
13	Other	[0019]	[0020]			[0022]		[0023]				
14	Total Revenue	[0024]	[0025]		[0026]	[0027]		[0028]				
15												
16	Costs											
17	Rent and Utilities	[0029]	[0030]		[0031]	[0032]		[0033]				
18	Bad Debts	[0034]	[0035]		[0036]	[0037]		[0038]				
19	Staff Costs	[0039]	[0040]		[0041]	[0042]		[0043]				
20	Office Costs	[0044]	[0045]		[0046]	[0047]		[0048]				
21	Audit Fees	[0049]	[0050]		[0051]	[0052]		[0053]				
22	Computer Systems	[0054]	[0055]		[0056]	[0057]		[0058]				
23	Equipment Maintenance	[0059]	[0060]		[0061]	[0062]		[0063]				
24	Sundry Expenses	[0064]	[0065]		[0066]	[0067]		[0068]				
25	Total Cost of Sales	[0069]	[0070]		[0071]	[0072]		[0073]				
26	[0084]											
27	[0085]Gross Profit	[0074]	[0075]		[0076]	[0077]		[0078]	[0086]			
28												
29	[0087]Gross Loss	[0079]	[0080]		[0081]	[0082]		[0083]	[0088]			
30	[0097] [0091] [0092] [0093] [0094] [0095] [0096] [0098]											
31												
32												
33												
34												

Slide notes

We do not change Tags, and we do not number Tags. We may insert pipes for new Tags, and we may delete Tag numbers from the Layout. That is the correct procedure.

Slide 12 - Slide 12

D1557131140.htm - Microsoft Excel

	A	B	C	D	E	F	G	H	I	J	K	L
1												
2												
3												
4												
5		Actual Current	Budget		Actual YTD	Budget YTD		Annual Budget				
6												
7												
8												
9												
10												
11	Revenue											
12	Stock Sales	[0014]	[0015]	renumber a Tag	[0016]	[0017]		[0018]				
13	Other	[0019]	[0020]			[0022]		[0023]				
14	Total Revenue	[0024]	[0025]		[0026]	[0027]		[0028]				
15												
16	Costs											
17	Rent and Utilities	[0029]	[0030]		[0031]	[0032]		[0033]				
18	Bad Debts	[0034]	[0035]		[0036]	[0037]		[0038]				
19	Staff Costs	[0039]	[0040]		[0041]	[0042]		[0043]				
20	Office Costs	[0044]	[0045]		[0046]	[0047]		[0048]				
21	Audit Fees	[0049]	[0050]		[0051]	[0052]		[0053]				
22	Computer Systems	[0054]	[0055]		[0056]	[0057]		[0058]				
23	Equipment Maintenance	[0059]	[0060]		[0061]	[0062]		[0063]				
24	Sundry Expenses	[0064]	[0065]		[0066]	[0067]		[0068]				
25	Total Cost of Sales	[0069]	[0070]		[0071]	[0072]		[0073]				
26	[0084]											
27	[0085]Gross Profit	[0074]	[0075]		[0076]	[0077]		[0078]	[0086]			
28												
29	[0087]Gross Loss	[0079]	[0080]		[0081]	[0082]		[0083]	[0088]			
30	[0097] [0091] [0092] [0093] [0094] [0095] [0096] [0098]											
31												
32												
33												
34												

Slide notes

Slide 13 - Slide 13

Microsoft Excel interface showing a Profit and Loss (Income Statement) for [0002]. The worksheet is titled "D1557131140.htm - Microsoft Excel". The ribbon includes Home, Insert, Page Layout, Formulas, Data, Review, View, and Add-Ins. The font is Verdana, size 8. The number format is General. The worksheet contains the following data:

	Actual Current	Budget	Actual YTD	Budget YTD	Annual Budget
Revenue	[0039]	[0040]	[0041]	[0042]	[0043]
Stock Sales	[0044]	[0045]	[0046]	[0047]	[0048]
Other	[0049]	[0050]	[0051]	[0052]	[0053]
Total Revenue	[0054]	[0055]	[0056]	[0057]	[0058]
Costs	[0059]	[0060]	[0061]	[0062]	[0063]
Rent and Utilities	[0064]	[0065]	[0066]	[0067]	[0068]
Bad Debts	[0069]	[0070]	[0071]	[0072]	[0073]
Staff Costs	[0074]	[0075]	[0076]	[0077]	[0078]
Office Costs	[0079]	[0080]	[0081]	[0082]	[0083]
Audit Fees					
Computer Systems					
Equipment Maintenance					
Sundry Expenses					
Total Cost of Sales					
Gross Profit					
Gross Loss					

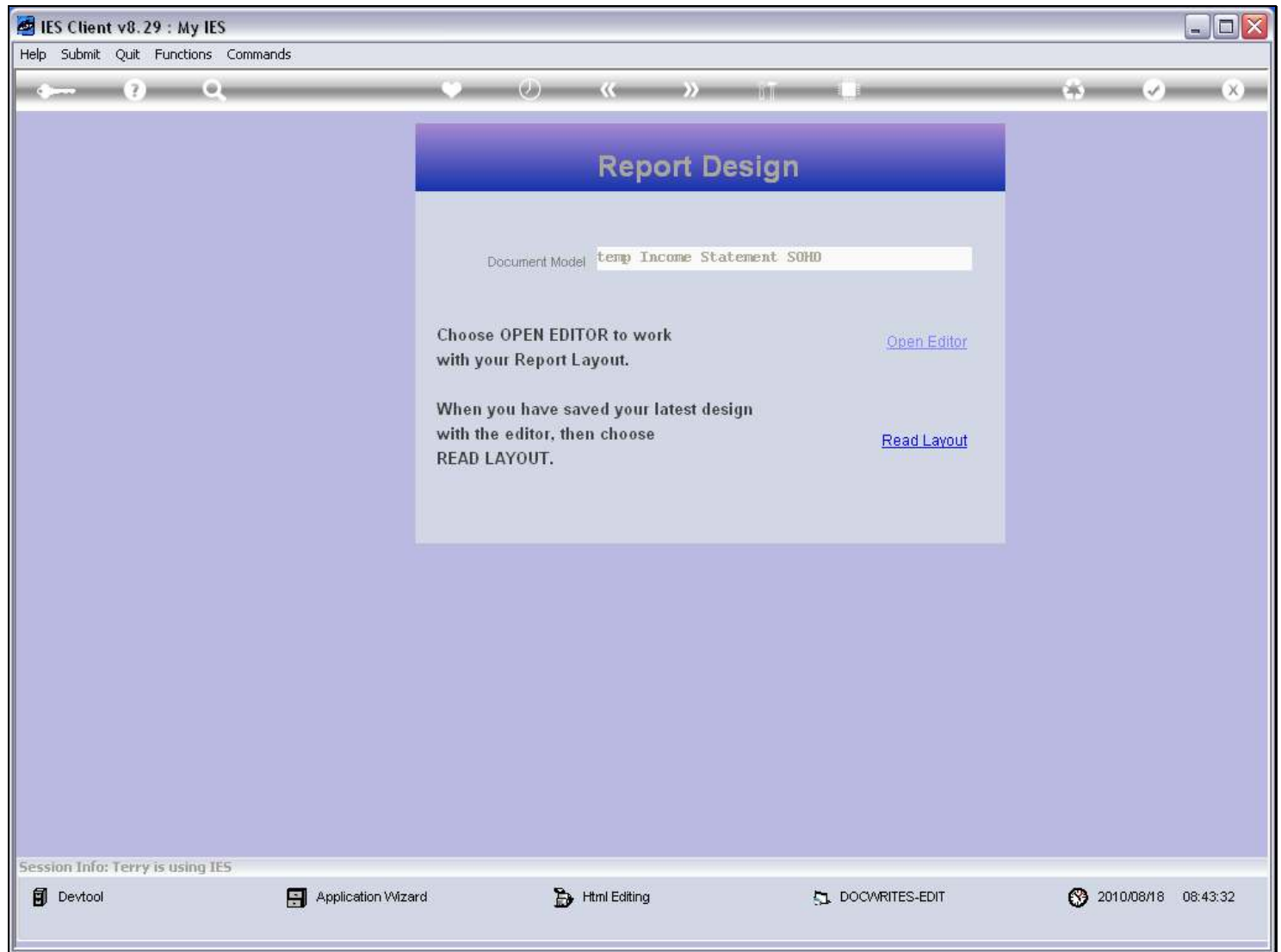
A Microsoft Office Excel dialog box is displayed, asking: "D1557131140.htm may contain features that are not compatible with Web Page. Do you want to keep the workbook in this format?" The options are Yes, No, and Help.

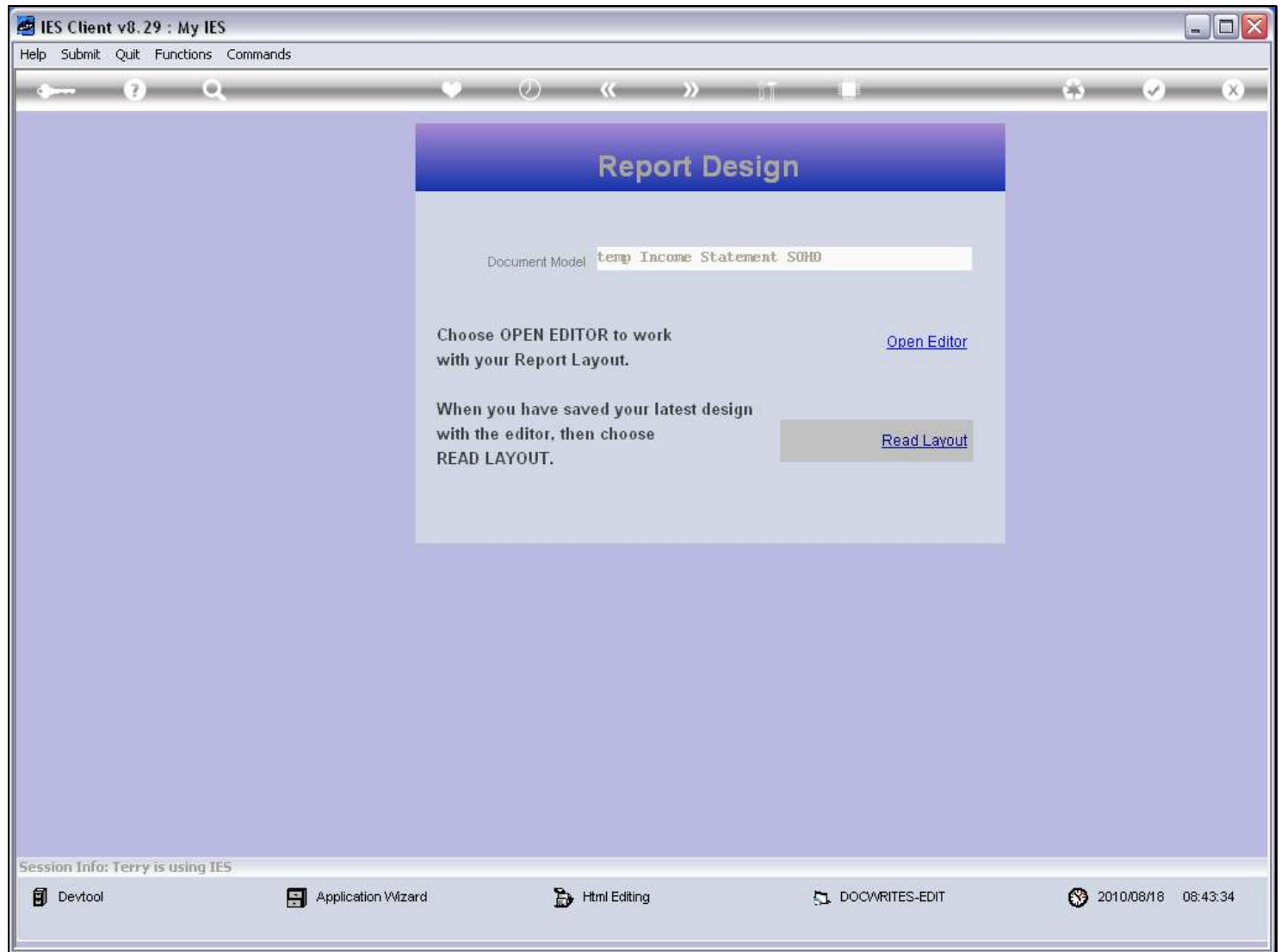
Slide notes

Slide 14 - Slide 14

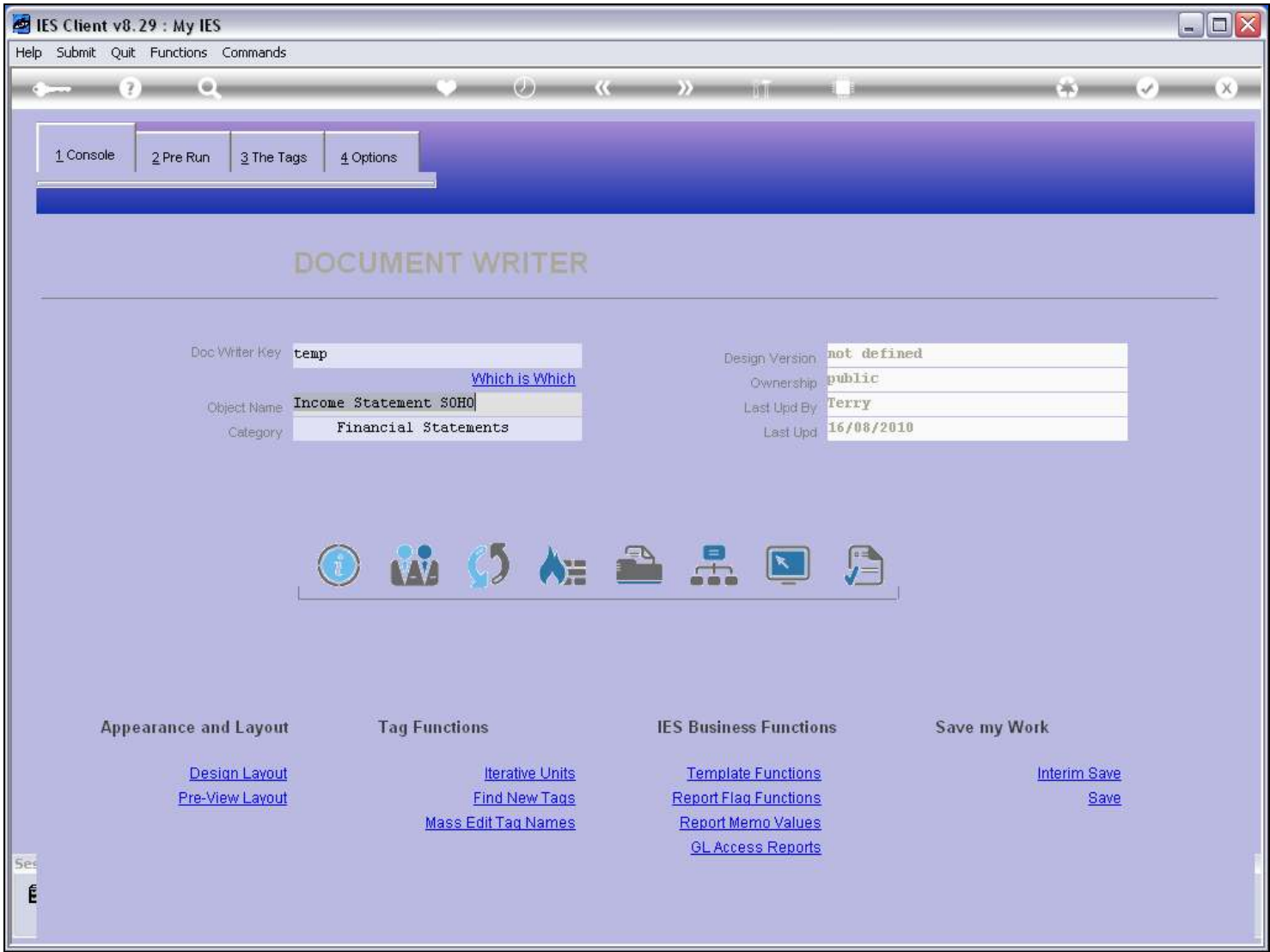
D1557131140.htm - Microsoft Excel												
Home Insert Page Layout Formulas Data Review View Add-Ins												
Clipboard		Font			Alignment			Number		Styles		Cells
F10												
	A	B	C	D	E	F	G	H	I	J	K	L
1												
2	[0001]											
3	Profit and Loss (Income Statement) for [0002]											
4												
5		Actual Current	Budget		Actual YTD	Budget YTD		Annual Budget				
6												
7	pipe and then the system will number the tag											
8												
9												
10												
11	Revenue											
12	Stock Sales	[0014]	[0015]	renumber a Tag	[0016]	[0017]		[0018]				
13	Other	[0019]	[0020]			[0022]		[0023]				
14	Total Revenue	[0024]	[0025]		[0026]	[0027]		[0028]				
15												
16	Costs											
17	Rent and Utilities	[0029]	[0030]		[0031]	[0032]		[0033]				
18	Bad Debts	[0034]	[0035]		[0036]	[0037]		[0038]				
19	Staff Costs	[0039]	[0040]		[0041]	[0042]		[0043]				
20	Office Costs	[0044]	[0045]		[0046]	[0047]		[0048]				
21	Audit Fees	[0049]	[0050]		[0051]	[0052]		[0053]				
22	Computer Systems	[0054]	[0055]		[0056]	[0057]		[0058]				
23	Equipment Maintenance	[0059]	[0060]		[0061]	[0062]		[0063]				
24	Sundry Expenses	[0064]	[0065]		[0066]	[0067]		[0068]				
25	Total Cost of Sales	[0069]	[0070]		[0071]	[0072]		[0073]				
26	[0084]											
27	[0085]Gross Profit	[0074]	[0075]		[0076]	[0077]		[0078]	[0086]			
28												
29	[0087]Gross Loss	[0079]	[0080]		[0081]	[0082]		[0083]	[0088]			
30	[0097] [0091] [0092] [0093] [0094] [0095] [0096] [0098]											
31												
32												
33												
34												

Slide notes

Slide 15 - Slide 15**Slide notes**

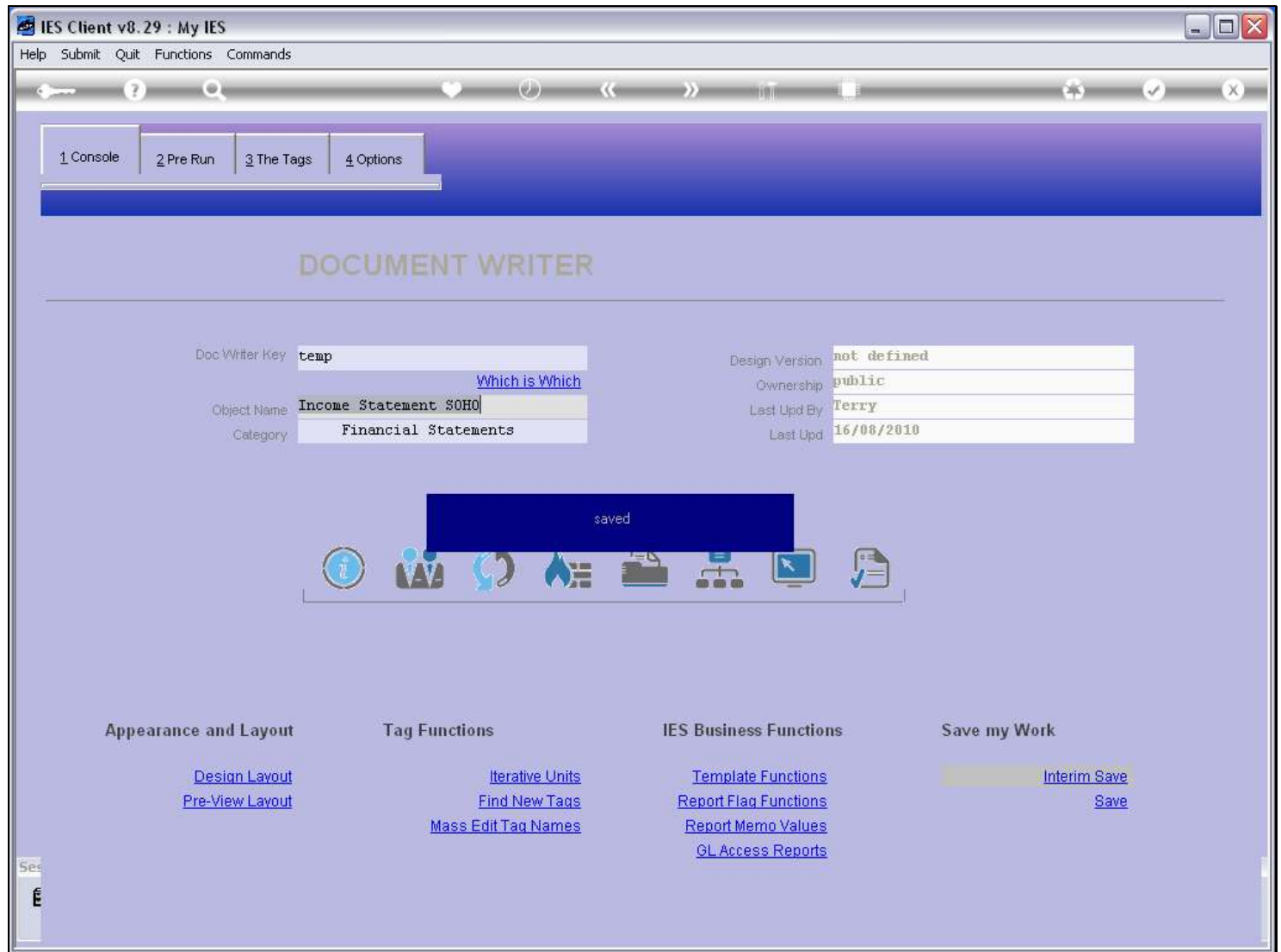
Slide 16 - Slide 16**Slide notes**

Slide 17 - Slide 17



Slide notes

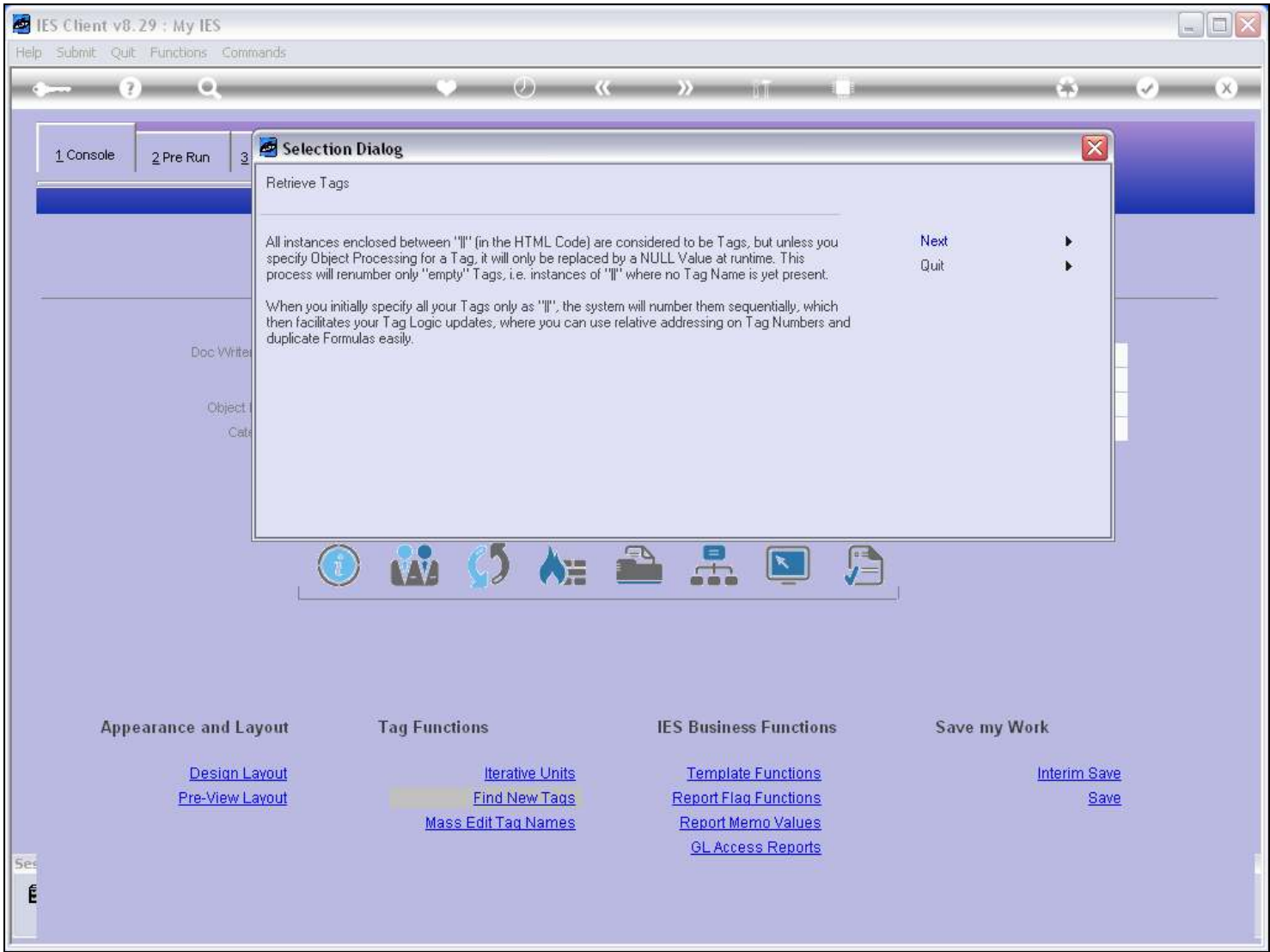
Slide 18 - Slide 18



Slide notes

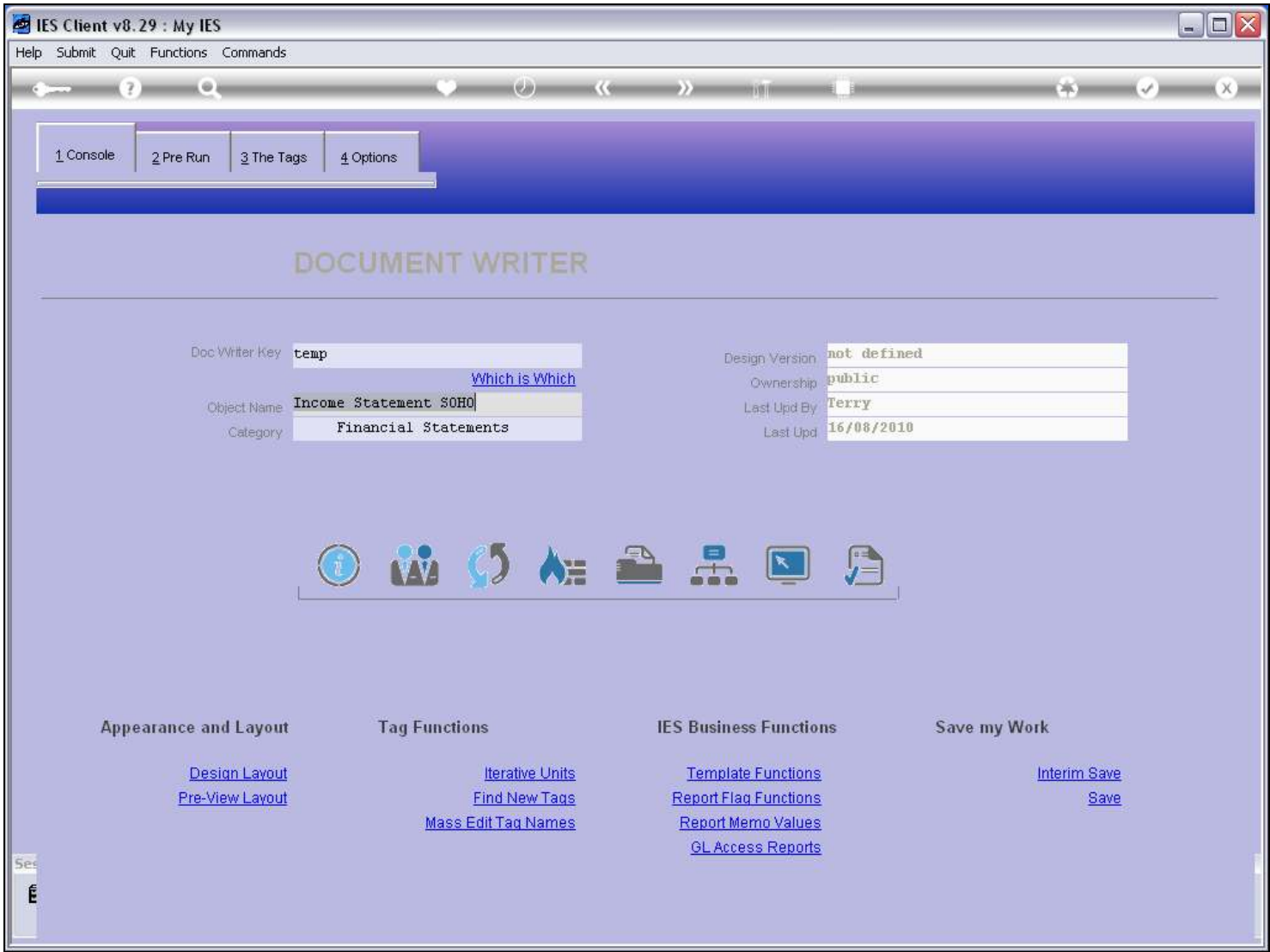
After making any changes on the Layout, we use the 'Find New Tags' function to update the internal Tag list. This function will recognize where Tags have been dropped, and it will find and number any new Tags.

Slide 19 - Slide 19



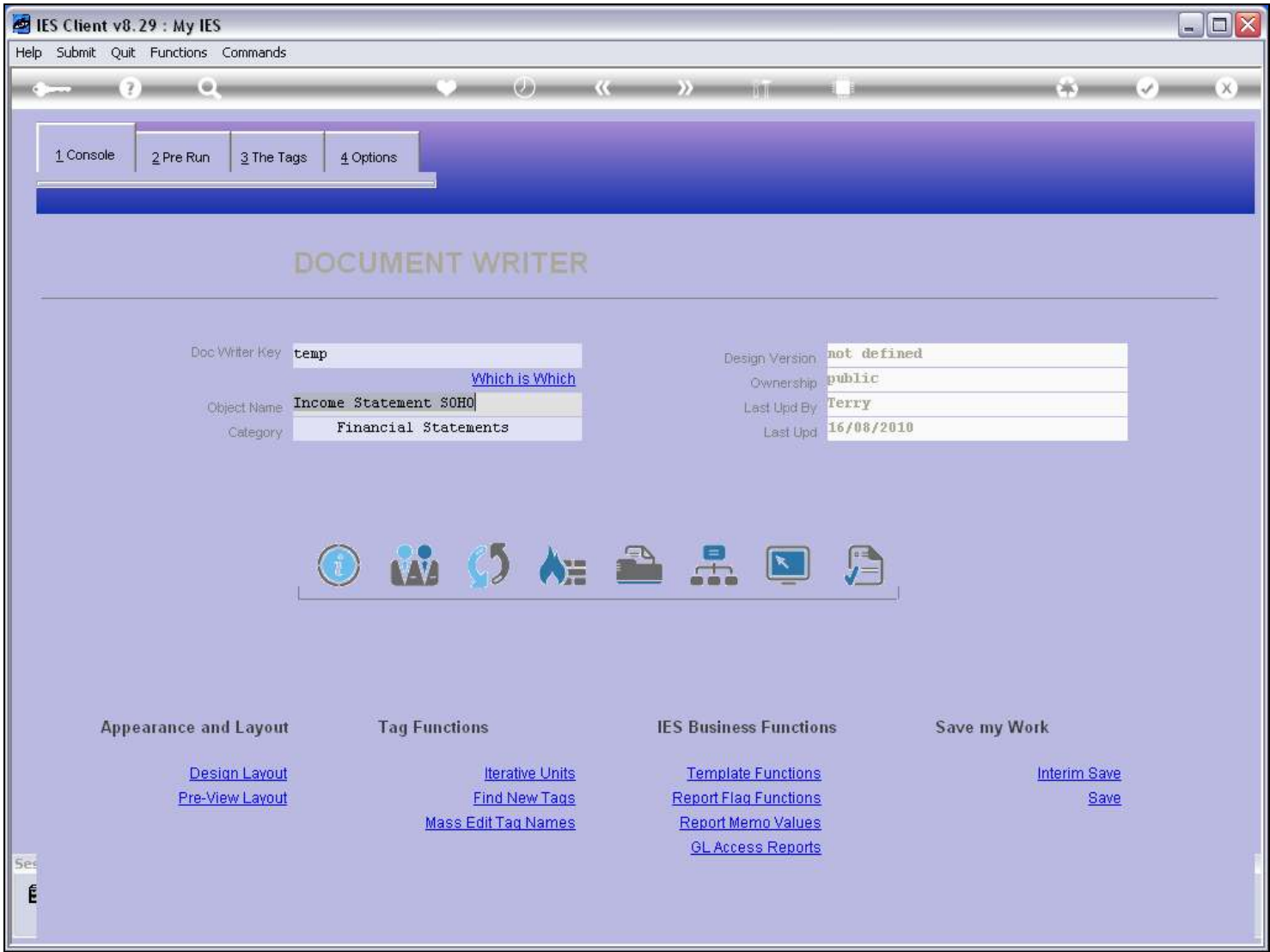
Slide notes

Slide 20 - Slide 20



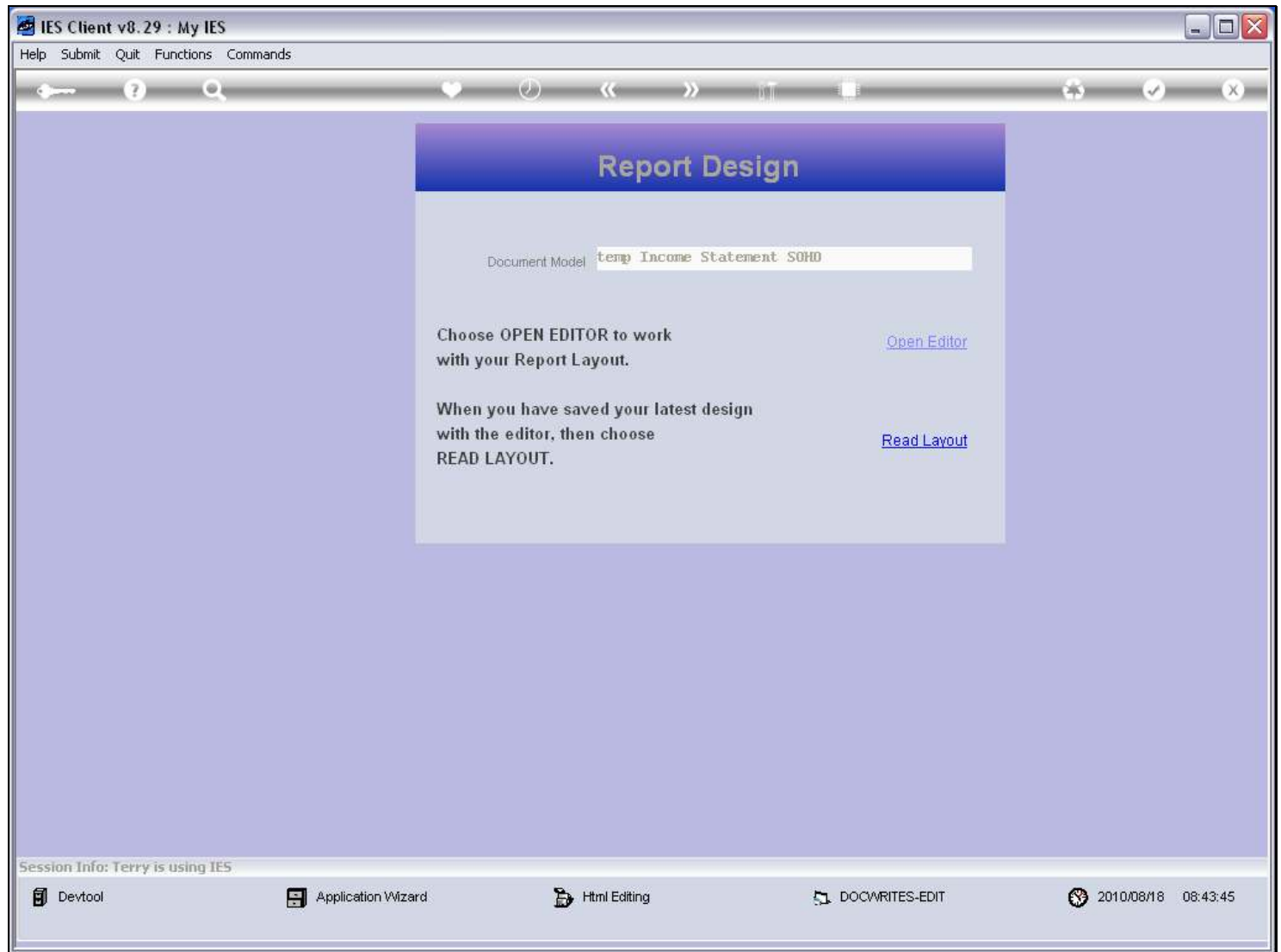
Slide notes

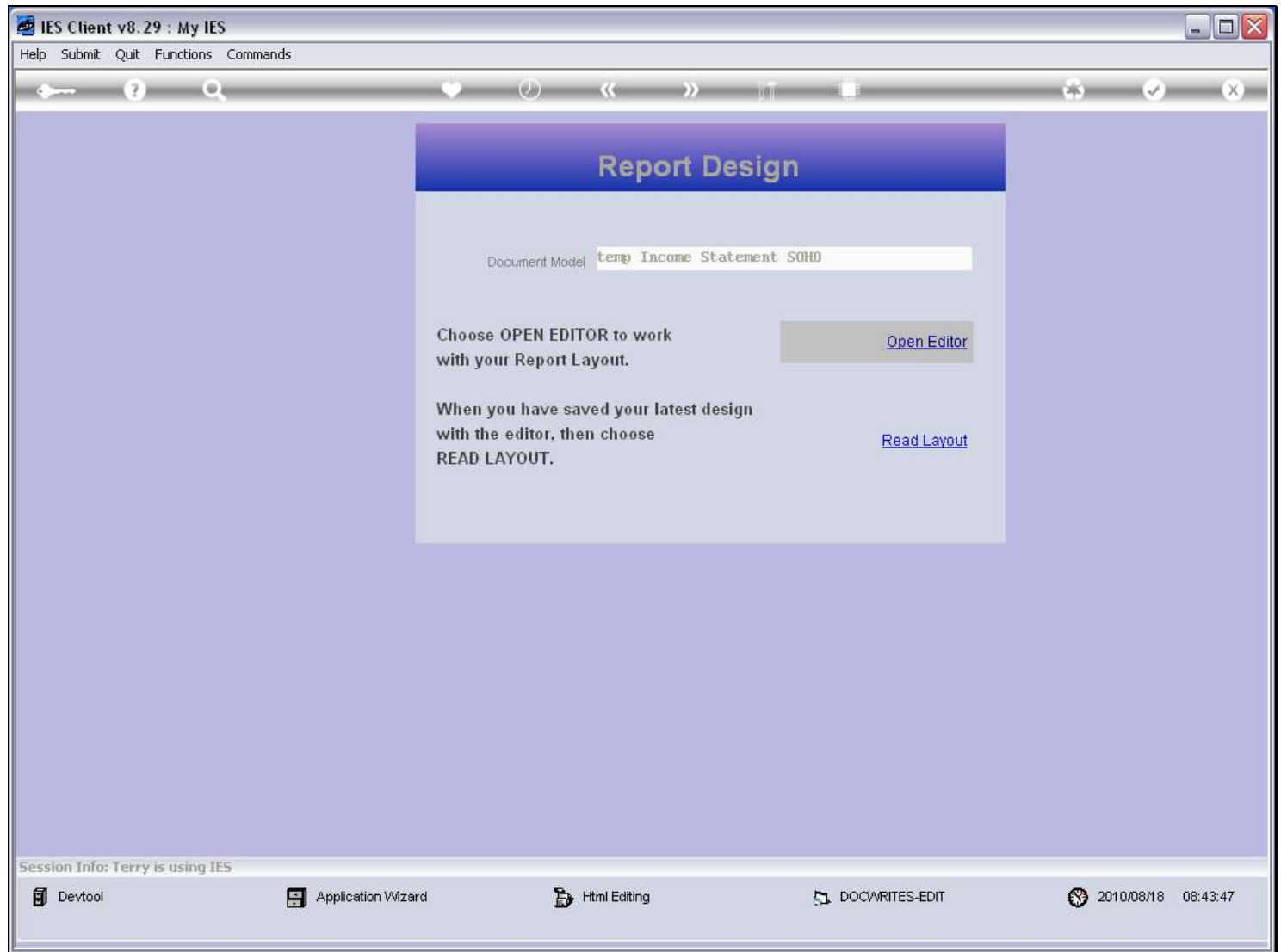
Slide 21 - Slide 21

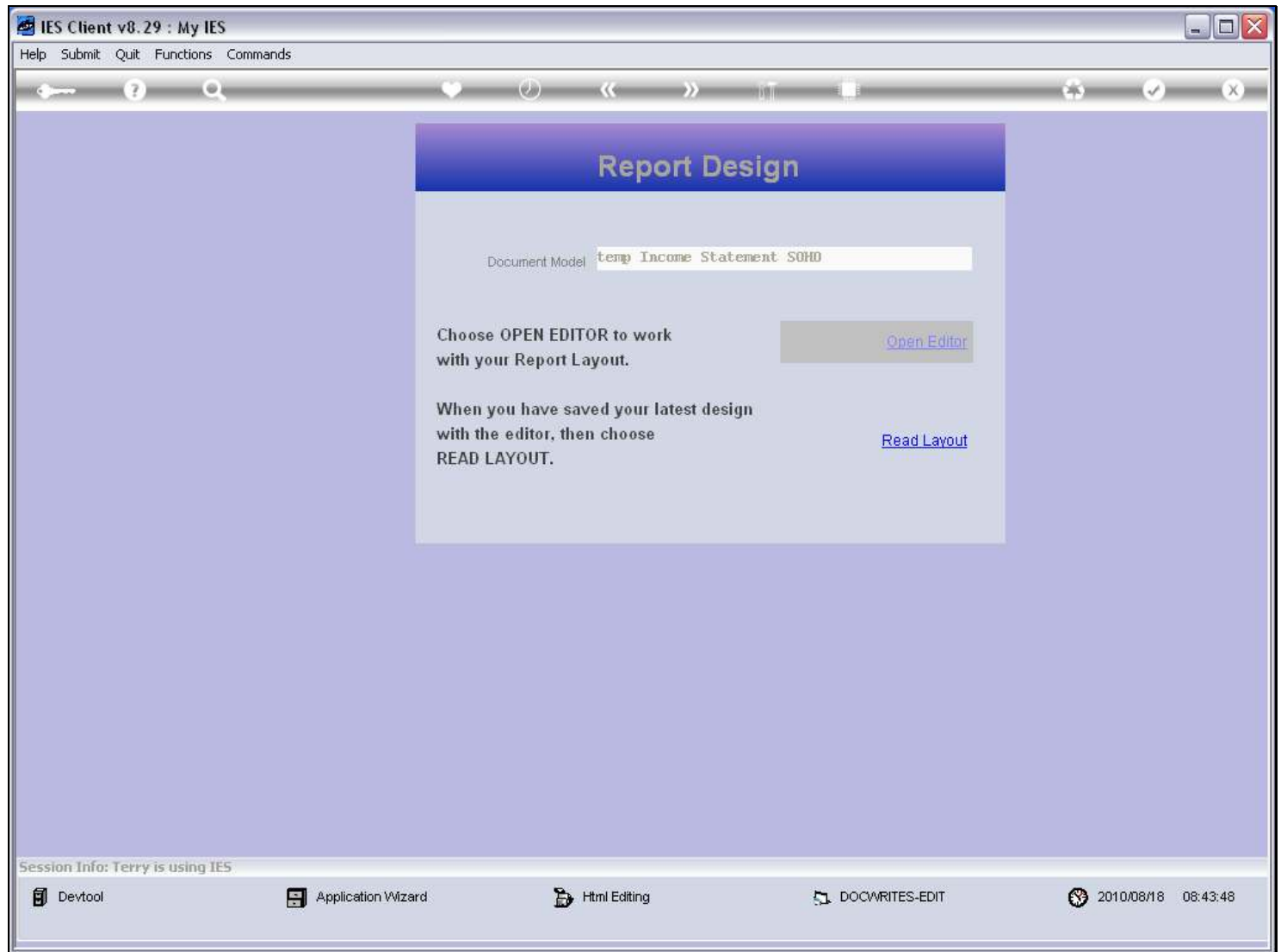


Slide notes

Slide 22 - Slide 22**Slide notes**

Slide 23 - Slide 23**Slide notes**

Slide 24 - Slide 24**Slide notes**

Slide 25 - Slide 25**Slide notes**

Slide 26 - Slide 26

D1557131427.htm - Microsoft Excel

Home Insert Page Layout Formulas Data Review View Add-Ins

Cut Copy Paste Format Painter Clipboard

Arial 10 A A B I U Font

Wrap Text Merge & Center Alignment

General Number Conditional Formatting Format as Table Cell Styles Insert Delete Cells

A1

	A	B	C	D	E	F	G	H	I	J	K	L
1												
2												
3												
4												
5												
6												
7												
8												
9												
10												
11												
12												
13												
14												
15												
16												
17												
18												
19												
20												
21												
22												
23												
24												
25												
26												
27												
28												
29												
30												
31												
32												
33												
34												

Slide notes

If we check our Layout again, then we can see that the system has found the newly inserted Tags, and numbered them. Even when these new Tag Numbers are higher than Tag numbers below, it does not matter, and it all depends on numbers that are available when the new Tags are numbered. In this case, there were lower Tag numbers available, but the Tag numbers do not determine the order in which Tags are calculated. Instead, Tags are calculated from left to right and top to bottom, and based on Calculation Iteration number.

Slide 27 - Slide 27

D1557131427.htm - Microsoft Excel

	A	B	C	D	E	F	G	H	I	J	K	L
1												
2												
3												
4												
5												
6												
7												
8												
9												
10												
11	Revenue											
12	Stock Sales	[0014]	[0015]									
13	Other	[0019]	[0020]									
14	Total Revenue	[0024]	[0025]									
15												
16	Costs											
17	Rent and Utilities	[0029]	[0030]									
18	Bad Debts	[0034]	[0035]									
19	Staff Costs	[0039]	[0040]									
20	Office Costs	[0044]	[0045]									
21	Audit Fees	[0049]	[0050]									
22	Computer Systems	[0054]	[0055]									
23	Equipment Maintenance	[0059]	[0060]									
24	Sundry Expenses	[0064]	[0065]									
25	Total Cost of Sales	[0069]	[0070]									
26	[0084]											
27	[0085]Gross Profit	[0074]	[0075]									[0086]
28												
29	[0087]Gross Loss	[0079]	[0080]									[0088]
30	[0097] [0091] [0092] [0093] [0094] [0095] [0096] [0098]											
31												
32												
33												
34												

Slide notes

Slide 28 - Slide 28

D1557131427.htm - Microsoft Excel

Home Insert Page Layout Formulas Data Review View Add-Ins

Clipboard Font Alignment Number Styles Cells

E13

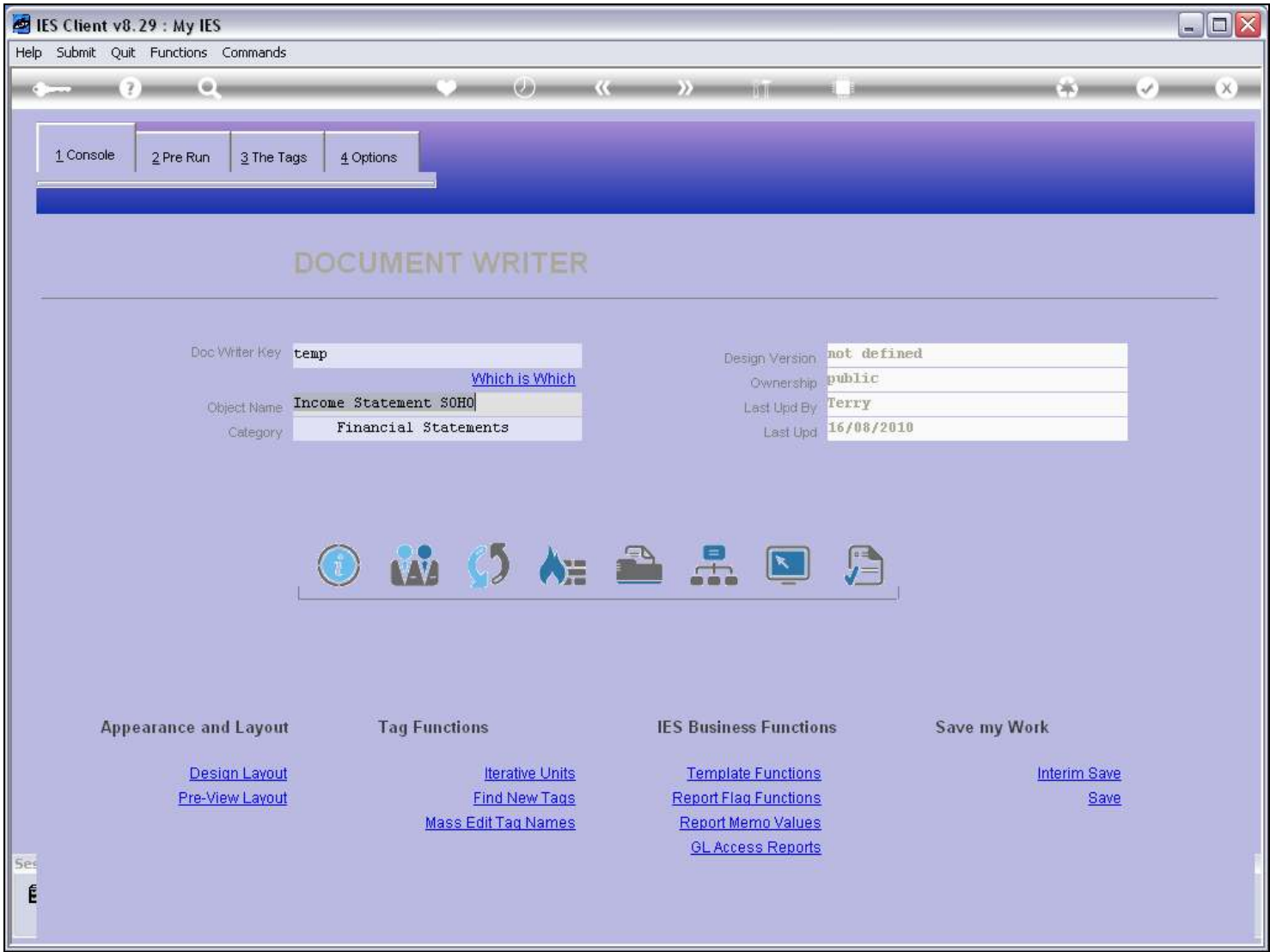
	A	B	C	D	E	F	G	H	I	J	K	L
1												
2												
3												
4												
5												
6												
7												
8												
9												
10												
11												
12												
13												
14												
15												
16												
17												
18												
19												
20												
21												
22												
23												
24												
25												
26												
27												
28												
29												
30												
31												
32												
33												
34												

Profit and Loss (Income Statement) for [0002]

	Actual Current	Budget	Actual YTD	Budget YTD	Annual Budget
Revenue					
Stock Sales	[0014]	[0015]	[0016]	[0017]	[0018]
Other	[0019]	[0020]	[0021]	[0022]	[0023]
Total Revenue	[0024]	[0025]	[0026]	[0027]	[0028]
Costs					
Rent and Utilities	[0029]	[0030]	[0031]	[0032]	[0033]
Bad Debts	[0034]	[0035]	[0036]	[0037]	[0038]
Staff Costs	[0039]	[0040]	[0041]	[0042]	[0043]
Office Costs	[0044]	[0045]	[0046]	[0047]	[0048]
Audit Fees	[0049]	[0050]	[0051]	[0052]	[0053]
Computer Systems	[0054]	[0055]	[0056]	[0057]	[0058]
Equipment Maintenance	[0059]	[0060]	[0061]	[0062]	[0063]
Sundry Expenses	[0064]	[0065]	[0066]	[0067]	[0068]
Total Cost of Sales	[0069]	[0070]	[0071]	[0072]	[0073]
[0084]					
[0085]Gross Profit	[0074]	[0075]	[0076]	[0077]	[0078]
[0087]Gross Loss	[0079]	[0080]	[0081]	[0082]	[0083]
[0097] [0091] [0092] [0093] [0094] [0095] [0096] [0098]					

Slide notes

Slide 29 - Slide 29



Slide notes

Slide 30 - Slide 30

IES Client v8.29 : My IES

Help Submit Quit Functions Commands

1 Console 2 Pre Run 3 The Tags 4 Options

Tag Result Macros: -

>>> Tags	Value Names	Exec It
1 0001	Co Name	1
2 0002	Period	1
3 1234	1234	1
4 0003	0003	1
5 0004	0004	1
6 0005	0005	1
7 0006	0006	1
8 0014	Stock Sales: Cur	1
9 0015	Stock Sales: Bud	1
10 0017	Stock Sales: YTD Bud	1
11 0018	Stock Sales: Ann Bud	1
12 0019	Other: Cur	1
13 0020	Other: Bud	1
14 0022	Other: YTD Bud	1
15 0023	Other: Ann Bud	1
16 0024	Tot Revenue: Cur	1
17 0025	Tot Revenue: Bud	1
18 0026	Tot Revenue: YTD	1
19 0027	Tot Revenue: YTD Bud	1
20 0028	Tot Revenue: Ann Bud	1
21 0029	Rent: Cur	1
22 0030	Rent: Bud	1
23 0031	Rent: YTD	1
24 0032	Rent: YTD Bud	1
25 0033	Rent: Ann Bud	1

Where is that tag !

[Select from Tag List](#)

[Search for Tag Number](#)

[Search for Tag Name](#)

Current Tag Focus: -

Row

Tag #

Name

[Open the Tag Macro](#)

Nex Pre Add Ins Ed Del

Slide notes

When we look at the internal Tag list, we can also see the new Tags that have been numbered.

Slide 31 - Slide 31

IES Client v8.29 : My IES

Help Submit Quit Functions Commands

1 Console2 Pre Run3 The Tags4 Options

Tag Result Macros: -

	>>> Tags	Value Names	Exec It
1	0001	Co Name	1
2	0002	Period	1
3	1234	1234	1
4	0003	0003	1
5	0004	0004	1
6	0005	0005	1
7	0006	0006	1
8	0014	Stock Sales: Cur	1
9	0015	Stock Sales: Bud	1
10	0017	Stock Sales: YTD Bud	1
11	0018	Stock Sales: Ann Bud	1
12	0019	Other: Cur	1
13	0020	Other: Bud	1
14	0022	Other: YTD Bud	1
15	0023	Other: Ann Bud	1
16	0024	Tot Revenue: Cur	1
17	0025	Tot Revenue: Bud	1
18	0026	Tot Revenue: YTD	1
19	0027	Tot Revenue: YTD Bud	1
20	0028	Tot Revenue: Ann Bud	1
21	0029	Rent: Cur	1
22	0030	Rent: Bud	1
23	0031	Rent: YTD	1
24	0032	Rent: YTD Bud	1
25	0033	Rent: Ann Bud	1

NexPreAddInsEdDel

Where is that tag !

Select from Tag List

Search for Tag Number

Search for Tag Name

Current Tag Focus: -

Row1

Tag #0001

NameCo Name

Open the Tag Macro

Slide notes

Slide 32 - Slide 32

IES Client v8.29 : My IES

Help Submit Quit Functions Commands

1 Console2 Pre Run3 The Tags4 Options

Tag Result Macros: -

	>>> Tags	Value Names	Exec It
1	0001	Co Name	1
2	0002	Period	1
3	1234	1234	1
4	0003	0003	1
5	0004	0004	1
6	0005	0005	1
7	0006	0006	1
8	0014	Stock Sales: Cur	1
9	0015	Stock Sales: Bud	1
10	0017	Stock Sales: YTD Bud	1
11	0018	Stock Sales: Ann Bud	1
12	0019	Other: Cur	1
13	0020	Other: Bud	1
14	0022	Other: YTD Bud	1
15	0023	Other: Ann Bud	1
16	0024	Tot Revenue: Cur	1
17	0025	Tot Revenue: Bud	1
18	0026	Tot Revenue: YTD	1
19	0027	Tot Revenue: YTD Bud	1
20	0028	Tot Revenue: Ann Bud	1
21	0029	Rent: Cur	1
22	0030	Rent: Bud	1
23	0031	Rent: YTD	1
24	0032	Rent: YTD Bud	1
25	0033	Rent: Ann Bud	1

NexPreAddInsEdDel

Where is that tag !

Select from Tag List

Search for Tag Number

Search for Tag Name

Current Tag Focus: -

Row1

Tag #0001

NameCo Name

Open the Tag Macro

Slide notes

Slide 33 - Slide 33

IES Client v8.29 : My IES

Help Submit Quit Functions Commands

1 Console 2 Pre Run 3 The Tags 4 Options

Tag Result Macros: -

>>> Tags	Value Names	Exec It
1 0001	Co Name	1
2 0002	Period	1
3 1234	1234	1
4 0003	0003	1
5 0004	0004	1
6 0005	0005	1
7 0006	0006	1
8 0014	Stock Sales: Cur	1
9 0015	Stock Sales: Bud	1
10 0017	Stock Sales: YTD Bud	1
11 0018	Stock Sales: Ann Bud	1
12 0019	Other: Cur	1
13 0020	Other: Bud	1
14 0022	Other: YTD Bud	1
15 0023	Other: Ann Bud	1
16 0024	Tot Revenue: Cur	1
17 0025	Tot Revenue: Bud	1
18 0026	Tot Revenue: YTD	1
19 0027	Tot Revenue: YTD Bud	1
20 0028	Tot Revenue: Ann Bud	1
21 0029	Rent: Cur	1
22 0030	Rent: Bud	1
23 0031	Rent: YTD	1
24 0032	Rent: YTD Bud	1
25 0033	Rent: Ann Bud	1

Where is that tag !

[Select from Tag List](#)

[Search for Tag Number](#)

[Search for Tag Name](#)

Current Tag Focus: -

Row	1
Tag #	0001
Name	Co Name

[Open the Tag Macro](#)

Nex Pre Add Ins Ed Del

Slide notes

We can also see the illegally inserted Tag 1234. Although the Tag has been included, it will cause problems and will not work correctly, because it was not numbered by the system. We should delete it from the Layout, and then it will disappear here as well.