

Slide 1 - Slide 1

D1557133259.htm - Microsoft Excel

	A	B	C	D	E	F	G	H	I	J	K	L
1												
2												
3												
4												
5		Actual Current	Budget		Actual YTD	Budget YTD		Annual Budget				
6												
7	Revenue											
8	Stock Sales	[0014]	[0015]		[0016]	[0017]		[0018]				
9	Other	[0019]	[0020]		[0021]	[0022]		[0023]				
10	Total Revenue	[0024]	[0025]		[0026]	[0027]		[0028]				
11												
12	Costs											
13	Rent and Utilities	[0029]	[0030]		[0031]	[0032]		[0033]				
14	Bad Debts	[0034]	[0035]		[0036]	[0037]		[0038]				
15	Staff Costs	[0039]	[0040]		[0041]	[0042]		[0043]				
16	Office Costs	[0044]	[0045]		[0046]	[0047]		[0048]				
17	Audit Fees	[0049]	[0050]		[0051]	[0052]		[0053]				
18	Computer Systems	[0054]	[0055]		[0056]	[0057]		[0058]				
19	Equipment Maintenance	[0059]	[0060]		[0061]	[0062]		[0063]				
20	Sundry Expenses	[0064]	[0065]		[0066]	[0067]		[0068]				
21	Total Cost of Sales	[0069]	[0070]		[0071]	[0072]		[0073]				
22	[0084]											
23	[0085]Gross Profit	[0074]	[0075]		[0076]	[0077]		[0078]	[0086]			
24												
25	[0087]Gross Loss	[0079]	[0080]		[0081]	[0082]		[0083]	[0088]			
26	[0097] [0091] [0092] [0093] [0094] [0095] [0096] [0098]											
27												
28												
29												
30												
31												
32												
33												
34												

Slide notes

Whenever we work with the Report Layout and make any changes, we will then use the 'Find New Tags' function to update the internal Tag list.

Slide 2 - Slide 2

D1557133259.htm - Microsoft Excel												
Home Insert Page Layout Formulas Data Review View Add-Ins												
Clipboard Font Alignment Number Styles Cells												
M18												
	A	B	C	D	E	F	G	H	I	J	K	L
1	[0001]											
2	Profit and Loss (Income Statement) for [0002]											
3												
4												
5		Actual Current	Budget		Actual YTD	Budget YTD		Annual Budget				
6												
7	Revenue											
8	Stock Sales	[0014]	[0015]		[0016]	[0017]		[0018]				
9	Other	[0019]	[0020]		[0021]	[0022]		[0023]				
10	Total Revenue	[0024]	[0025]		[0026]	[0027]		[0028]				
11												
12	Costs											
13	Rent and Utilities	[0029]	[0030]		[0031]	[0032]		[0033]				
14	Bad Debts	[0034]	[0035]		[0036]	[0037]		[0038]				
15	Staff Costs	[0039]	[0040]		[0041]	[0042]		[0043]				
16	Office Costs	[0044]	[0045]		[0046]	[0047]		[0048]				
17	Audit Fees	[0049]	[0050]		[0051]	[0052]		[0053]				
18	Computer Systems	[0054]	[0055]		[0056]	[0057]		[0058]				
19	Equipment Maintenance	[0059]	[0060]		[0061]	[0062]		[0063]				
20	Sundry Expenses	[0064]	[0065]		[0066]	[0067]		[0068]				
21	Total Cost of Sales	[0069]	[0070]		[0071]	[0072]		[0073]				
22	[0084]											
23	[0085]Gross Profit	[0074]	[0075]		[0076]	[0077]		[0078]	[0086]			
24												
25	[0087]Gross Loss	[0079]	[0080]		[0081]	[0082]		[0083]	[0088]			
26	[0097] [0091] [0092] [0093] [0094] [0095] [0096] [0098]											
27												
28												
29												
30												
31												
32												
33												
34												

Slide notes

Slide 3 - Slide 3

D1557133259.htm - Microsoft Excel

	A	B	C	D	E	F	G	H	I	J	K	L
1												
2												
3												
4												
5		Actual Current	Budget			Actual YTD	Budget YTD					
6												
7	Revenue											
8	Stock Sales	[0014]	[0015]			[0016]	[0017]			[0018]		
9	Other	[0019]	[0020]			[0021]	[0022]			[0023]		
10	Total Revenue	[0024]	[0025]			[0026]	[0027]			[0028]		
11												
12	Costs											
13	Rent and Utilities	[0029]	[0030]			[0031]	[0032]			[0033]		
14	Bad Debts	[0034]	[0035]			[0036]	[0037]			[0038]		
15	Staff Costs	[0039]	[0040]			[0041]	[0042]			[0043]		
16	Office Costs	[0044]	[0045]			[0046]	[0047]			[0048]		
17	Audit Fees	[0049]	[0050]			[0051]	[0052]			[0053]		
18	Computer Systems	[0054]	[0055]			[0056]	[0057]			[0058]		
19	Equipment Maintenance	[0059]	[0060]			[0061]	[0062]			[0063]		
20	Sundry Expenses	[0064]	[0065]			[0066]	[0067]			[0068]		
21	Total Cost of Sales	[0069]	[0070]			[0071]	[0072]			[0073]		
22	[0084]											
23	[0085]Gross Profit	[0074]	[0075]			[0076]	[0077]			[0078]	[0086]	
24												
25	[0087]Gross Loss	[0079]	[0080]			[0081]	[0082]			[0083]	[0088]	
26	[0097] [0091] [0092] [0093] [0094] [0095] [0096] [0098]											
27												
28												
29												
30												
31												
32												
33												
34												

Slide notes

For example, wherever we insert 2 pipe symbols, a new Tag will be recognized and numbered.

Slide 4 - Slide 4

D1557133259.htm - Microsoft Excel

D1557133259.htm - Microsoft Excel											
Home Insert Page Layout Formulas Data Review View Add-Ins											
Clipboard Font Alignment Number Styles Cells											
B13 [0029]											
A	B	C	D	E	F	G	H	I	J	K	L
1											
2	[0001]										
3	Profit and Loss (Income Statement) for [0002]										
4											
5		Actual Current	Budget		Actual YTD	Budget YTD		Annual Budget			
6											
7	Revenue										
8	Stock Sales	[0014]	[0015]		[0016]	[0017]		[0018]			
9	Other	[0019]	[0020]		[0021]	[0022]		[0023]			
10	Total Revenue	[0024]	[0025]		[0026]	[0027]		[0028]			
11											
12	Costs										
13	Rent and Utilities	[0029]	[0030]		[0031]	[0032]		[0033]			
14	Bad Debts	[0034]	[0035]		[0036]	[0037]		[0038]			
15	Staff Costs	[0039]	[0040]		[0041]	[0042]		[0043]			
16	Office Costs	[0044]	[0045]		[0046]	[0047]		[0048]			
17	Audit Fees	[0049]	[0050]		[0051]	[0052]		[0053]			
18	Computer Systems	[0054]	[0055]		[0056]	[0057]		[0058]			
19	Equipment Maintenance	[0059]	[0060]		[0061]	[0062]		[0063]			
20	Sundry Expenses	[0064]	[0065]		[0066]	[0067]		[0068]			
21	Total Cost of Sales	[0069]	[0070]		[0071]	[0072]		[0073]			
22	[0084]										
23	[0085]Gross Profit	[0074]	[0075]		[0076]	[0077]		[0078]	[0086]		
24											
25	[0087]Gross Loss	[0079]	[0080]		[0081]	[0082]		[0083]	[0088]		
26	[0097] [0091] [0092] [0093] [0094] [0095] [0096] [0098]										
27											
28											
29											
30											
31											
32											
33											
34											

Slide notes

And wherever we delete a Tag from the Layout, it will also be dropped from the internal Tag list.

Slide 5 - Slide 5

D1557133259.htm - Microsoft Excel

	A	B	C	D	E	F	G	H	I	J	K	L
1												
2												
3												
4												
5		Actual Current	Budget			Actual YTD	Budget YTD			Annual Budget		
6												
7	Revenue											
8	Stock Sales	[0014]	[0015]			[0016]	[0017]			[0018]		
9	Other	[0019]	[0020]			[0021]	[0022]			[0023]		
10	Total Revenue	[0024]	[0025]			[0026]	[0027]			[0028]		
11												
12	Costs											
13	Rent and Utilities		[0030]			[0031]	[0032]			[0033]		
14	Bad Debts	[0034]	[0035]			[0036]	[0037]			[0038]		
15	Staff Costs	[0039]	[0040]			[0041]	[0042]			[0043]		
16	Office Costs	[0044]	[0045]			[0046]	[0047]			[0048]		
17	Audit Fees	[0049]	[0050]			[0051]	[0052]			[0053]		
18	Computer Systems	[0054]	[0055]			[0056]	[0057]			[0058]		
19	Equipment Maintenance	[0059]	[0060]			[0061]	[0062]			[0063]		
20	Sundry Expenses	[0064]	[0065]			[0066]	[0067]			[0068]		
21	Total Cost of Sales	[0069]	[0070]			[0071]	[0072]			[0073]		
22	[0084]											
23	[0085]Gross Profit	[0074]	[0075]			[0076]	[0077]			[0078]	[0086]	
24												
25	[0087]Gross Loss	[0079]	[0080]			[0081]	[0082]			[0083]	[0088]	
26	[0097] [0091] [0092] [0093] [0094] [0095] [0096] [0098]											
27												
28												
29												
30												
31												
32												
33												
34												

Slide notes

The screenshot shows a Microsoft Excel spreadsheet titled "D1557133259.htm - Microsoft Excel". The ribbon at the top includes Home, Insert, Page Layout, Formulas, Data, Review, View, and Add-Ins. The spreadsheet displays a Profit and Loss (Income Statement) for 2002. The columns are labeled A through L. The rows are numbered 1 through 34. The data is organized into a table with the following structure:

	Actual Current	Budget	Actual YTD	Budget YTD	Annual Budget
Revenue					
Stock Sales	[0014]	[0015]	[0016]	[0017]	[0018]
Other	[0019]	[0020]	[0021]	[0022]	[0023]
Total Revenue					
Costs					
Rent and Utilities					
Bad Debts					
Staff Costs					
Office Costs					
Audit Fees					
Computer Systems					
Equipment Maintenance	[0059]	[0060]	[0061]	[0062]	[0063]
Sundry Expenses	[0064]	[0065]	[0066]	[0067]	[0068]
Total Cost of Sales	[0069]	[0070]	[0071]	[0072]	[0073]
[0084]					
[0085] Gross Profit	[0074]	[0075]	[0076]	[0077]	[0078]
[0087] Gross Loss	[0079]	[0080]	[0081]	[0082]	[0083]
[0097] [0091] [0092] [0093] [0094] [0095] [0096] [0098]					

A dialog box titled "Microsoft Office Excel" is displayed in the center of the screen. It contains the following text:

D1557133259.htm may contain features that are not compatible with Web Page. Do you want to keep the workbook in this format?

- To keep this format, which leaves out any incompatible features, click Yes.
- To preserve the features, click No. Then save a copy in the latest Excel format.
- To see what might be lost, click Help.

The dialog box has three buttons: Yes, No, and Help.

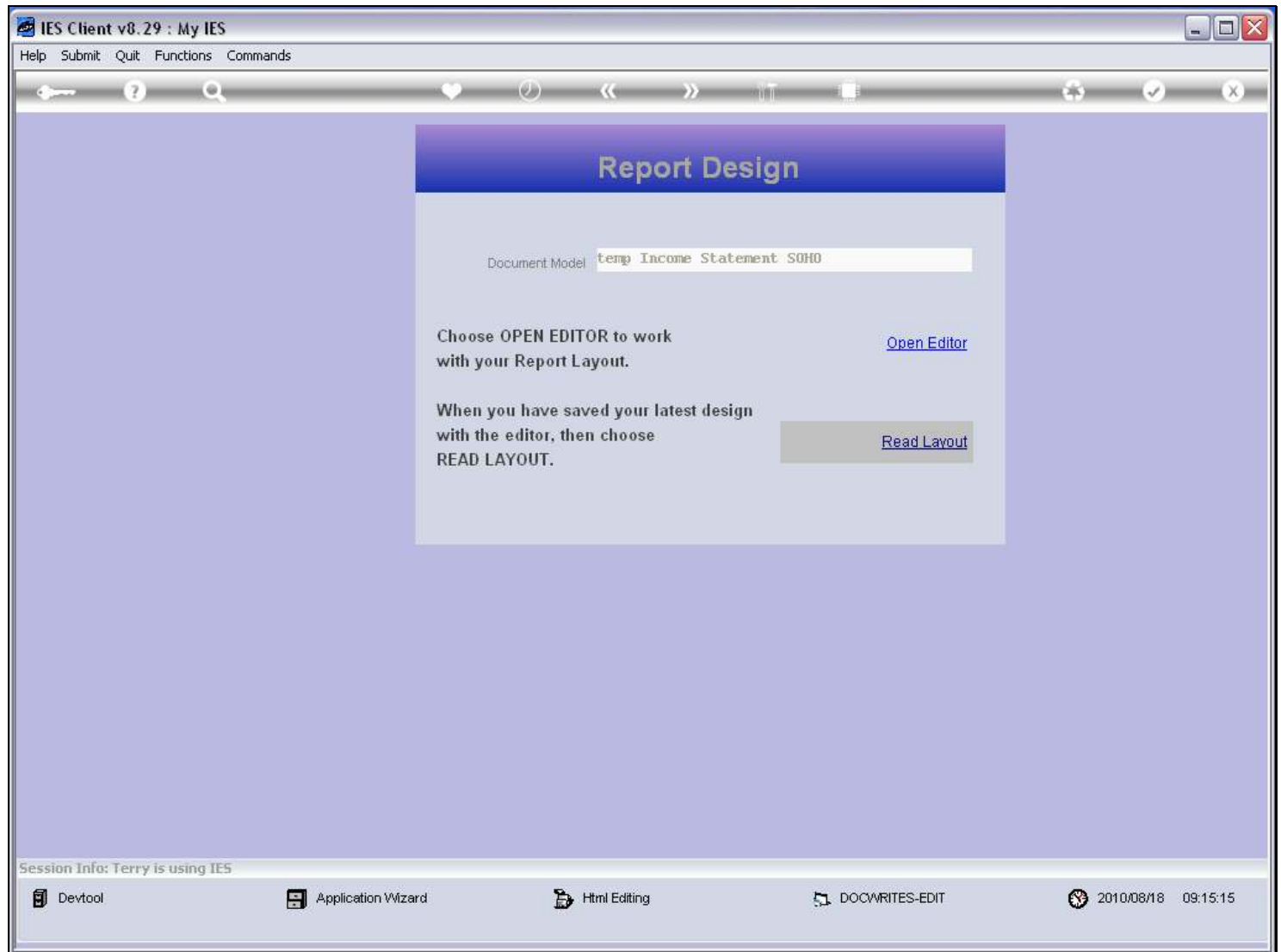
Page 6 of 18

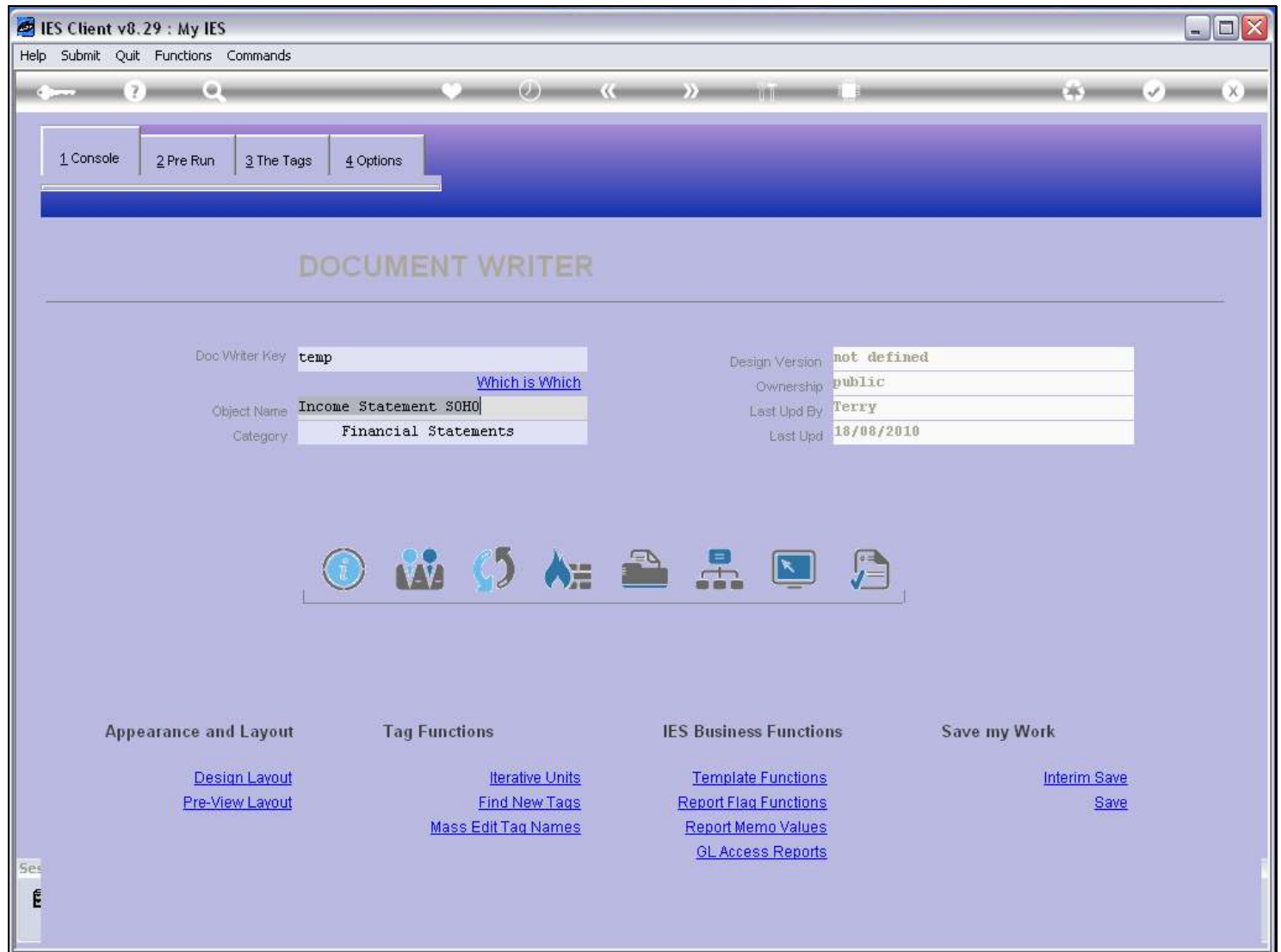
Slide 7 - Slide 7

D1557133259.htm - Microsoft Excel											
Home Insert Page Layout Formulas Data Review View Add-Ins											
Clipboard Font Alignment Number Styles Cells											
B13											
A	B	C	D	E	F	G	H	I	J	K	L
[0001]											
Profit and Loss (Income Statement) for [0002]											
	Actual Current	Budget		Actual YTD	Budget YTD		Annual Budget				
Revenue											
Stock Sales	[0014]	[0015]		[0016]	[0017]		[0018]				
Other	[0019]	[0020]		[0021]	[0022]		[0023]				
Total Revenue	[0024]	[0025]		[0026]	[0027]		[0028]				
Costs											
Rent and Utilities		[0030]		[0031]	[0032]		[0033]				
Bad Debts	[0034]	[0035]		[0036]	[0037]		[0038]				
Staff Costs	[0039]	[0040]		[0041]	[0042]		[0043]				
Office Costs	[0044]	[0045]		[0046]	[0047]		[0048]				
Audit Fees	[0049]	[0050]		[0051]	[0052]		[0053]				
Computer Systems	[0054]	[0055]		[0056]	[0057]		[0058]				
Equipment Maintenance	[0059]	[0060]		[0061]	[0062]		[0063]				
Sundry Expenses	[0064]	[0065]		[0066]	[0067]		[0068]				
Total Cost of Sales	[0069]	[0070]		[0071]	[0072]		[0073]				
[0084]											
[0085]Gross Profit	[0074]	[0075]		[0076]	[0077]		[0078]	[0086]			
[0087]Gross Loss	[0079]	[0080]		[0081]	[0082]		[0083]	[0088]			
[0097] [0091] [0092] [0093] [0094] [0095] [0096] [0098]											

Slide notes

Slide 8 - Slide 8**Slide notes**

Slide 9 - Slide 9**Slide notes**

Slide 10 - Slide 10**Slide notes**

Slide 11 - Slide 11

IES Client v8.29 : My IES

Help Submit Quit Functions Commands

1 Console 2 Pre Run 3 The Tags 4 Options

Tag Result Macros: -

>>> Tags	Value Names	Exec It
1 0001	Co Name	1
2 0002	Period	1
3 0014	Stock Sales: Cur	1
4 0015	Stock Sales: Bud	1
5 0016	Stock Sales: YTD	1
6 0017	Stock Sales: YTD Bud	1
7 0018	Stock Sales: Ann Bud	1
8 0019	Other: Cur	1
9 0020	Other: Bud	1
10 0021	Other: YTD	1
11 0022	Other: YTD Bud	1
12 0023	Other: Ann Bud	1
13 0024	Tot Revenue: Cur	1
14 0025	Tot Revenue: Bud	1
15 0026	Tot Revenue: YTD	1
16 0027	Tot Revenue: YTD Bud	1
17 0028	Tot Revenue: Ann Bud	1
18 0029	Rent: Cur	1
19 0030	Rent: Bud	1
20 0031	Rent: YTD	1
21 0032	Rent: YTD Bud	1
22 0033	Rent: Ann Bud	1
23 0034	Bad Debts: Cur	1
24 0035	Bad Debts: Bud	1
25 0036	Bad Debts: YTD	1

Where is that tag !

[Select from Tag List](#)

[Search for Tag Number](#)

[Search for Tag Name](#)

Current Tag Focus: -

Row	1
Tag #	0001
Name	Co Name

[Open the Tag Macro](#)

Nex Pre Add Ins Ed Del

Slide notes

Even though we have read the latest Layout, the Tag list is still in its former state. We can see that Tag 29, which was deleted in the Layout, is still here, and the new Tag that was inserted is not yet present. And it's because we have not yet performed 'Find New Tags'.

Slide 12 - Slide 12

IES Client v8.29 : My IES

Help Submit Quit Functions Commands

1 Console2 Pre Run3 The Tags4 Options

Tag Result Macros: -

>>>	Tags	Value Names	Exec It
1	0001	Co Name	1
2	0002	Period	1
3	0014	Stock Sales: Cur	1
4	0015	Stock Sales: Bud	1
5	0016	Stock Sales: YTD	1
6	0017	Stock Sales: YTD Bud	1
7	0018	Stock Sales: Ann Bud	1
8	0019	Other: Cur	1
9	0020	Other: Bud	1
10	0021	Other: YTD	1
11	0022	Other: YTD Bud	1
12	0023	Other: Ann Bud	1
13	0024	Tot Revenue: Cur	1
14	0025	Tot Revenue: Bud	1
15	0026	Tot Revenue: YTD	1
16	0027	Tot Revenue: YTD Bud	1
17	0028	Tot Revenue: Ann Bud	1
18	0029	Rent: Cur	1
19	0030	Rent: Bud	1
20	0031	Rent: YTD	1
21	0032	Rent: YTD Bud	1
22	0033	Rent: Ann Bud	1
23	0034	Bad Debts: Cur	1
24	0035	Bad Debts: Bud	1
25	0036	Bad Debts: YTD	1

NexPreAddInsEdDel

Where is that tag !

Select from Tag List

Search for Tag Number

Search for Tag Name

Current Tag Focus: -

Row1

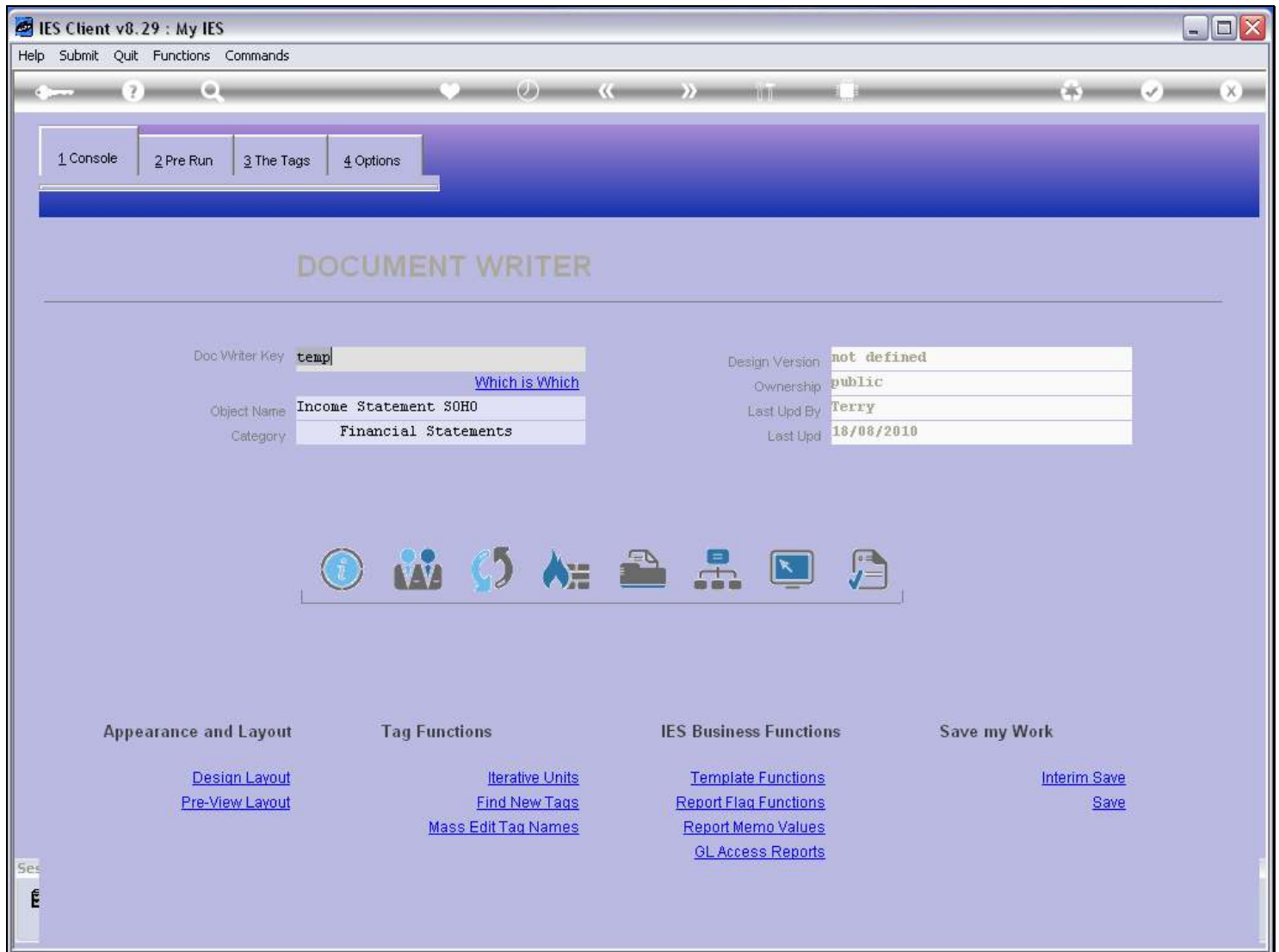
Tag #0001

NameCo Name

Open the Tag Macro

Slide notes

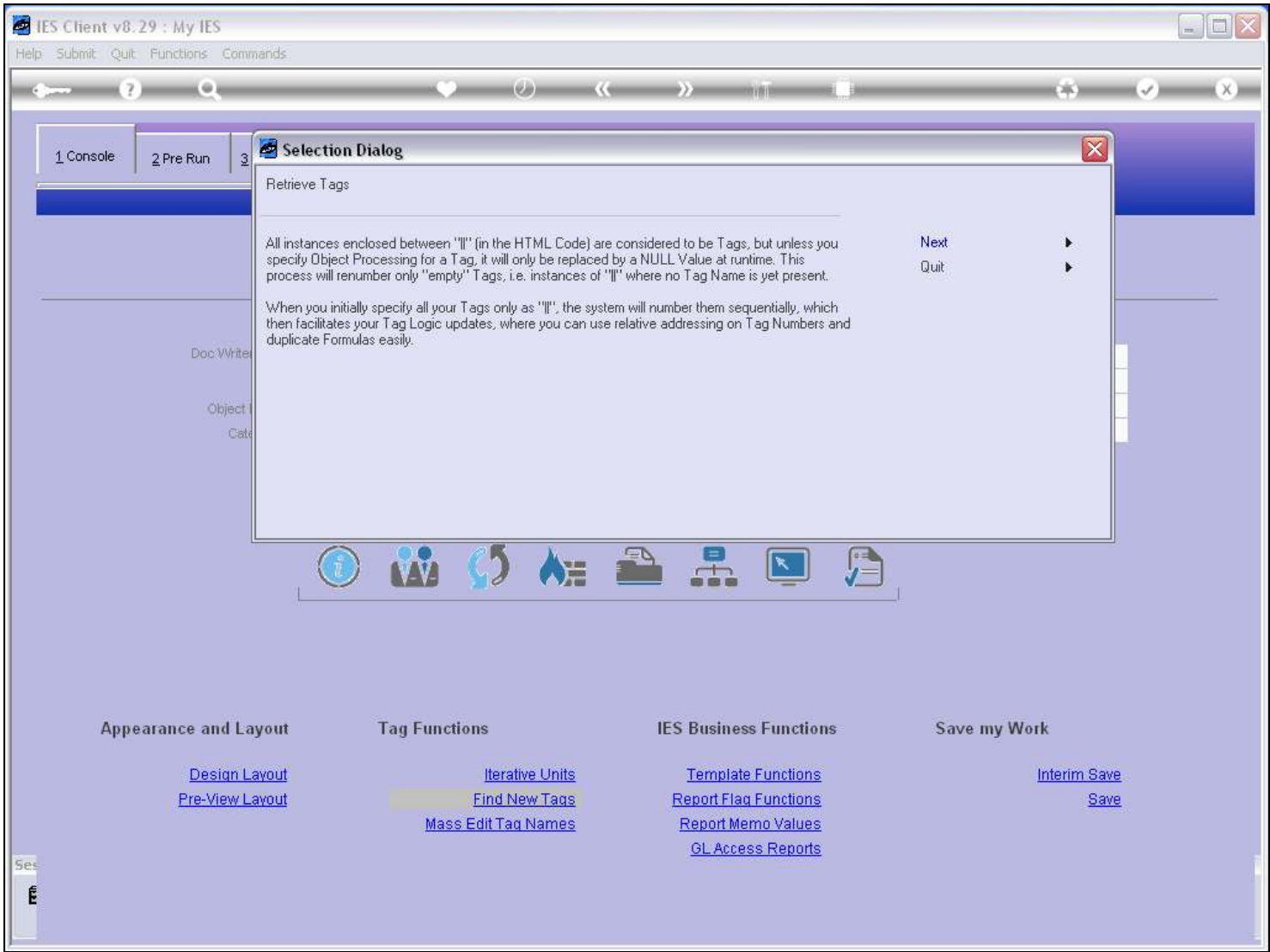
Slide 13 - Slide 13



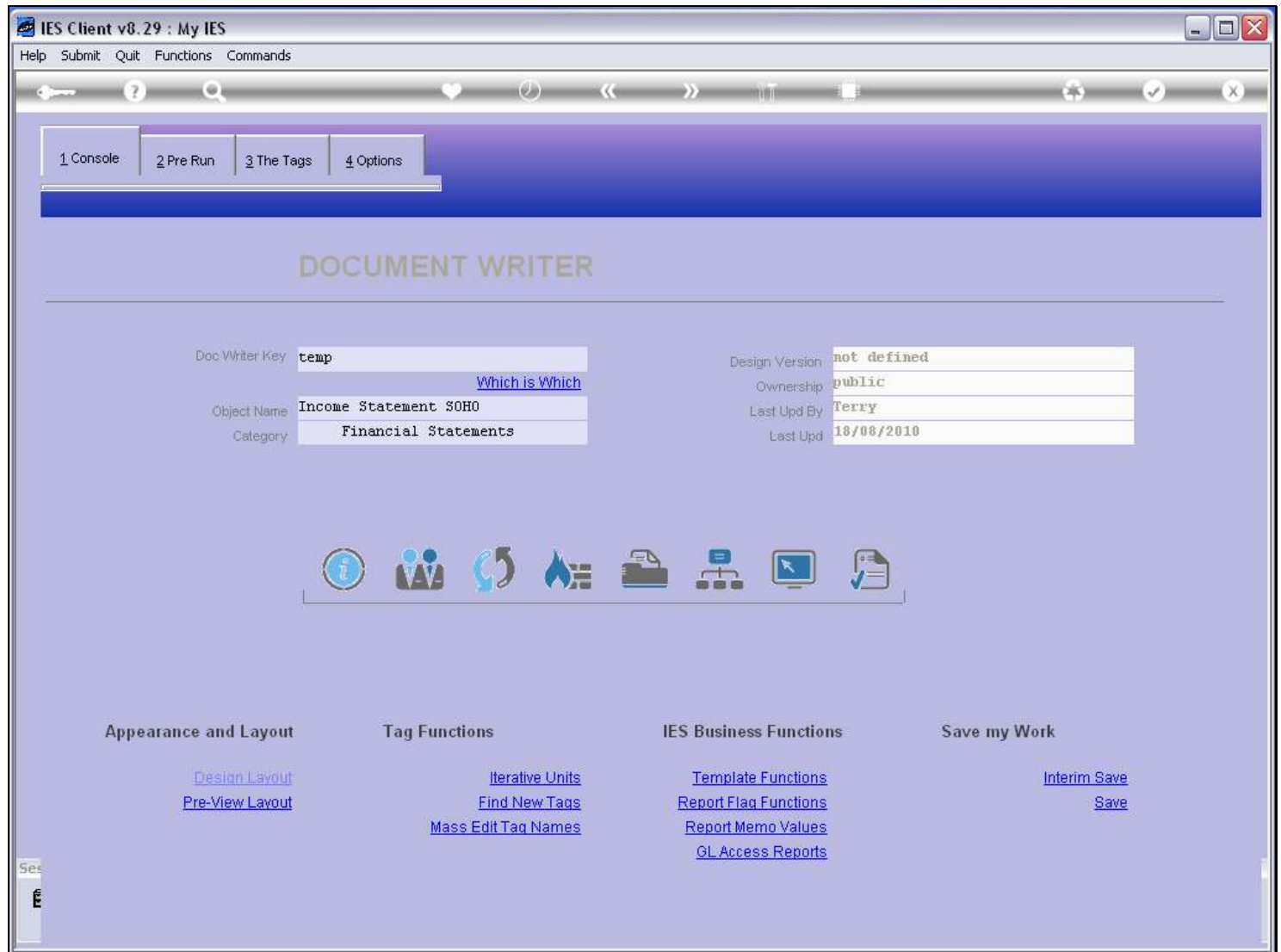
Slide notes

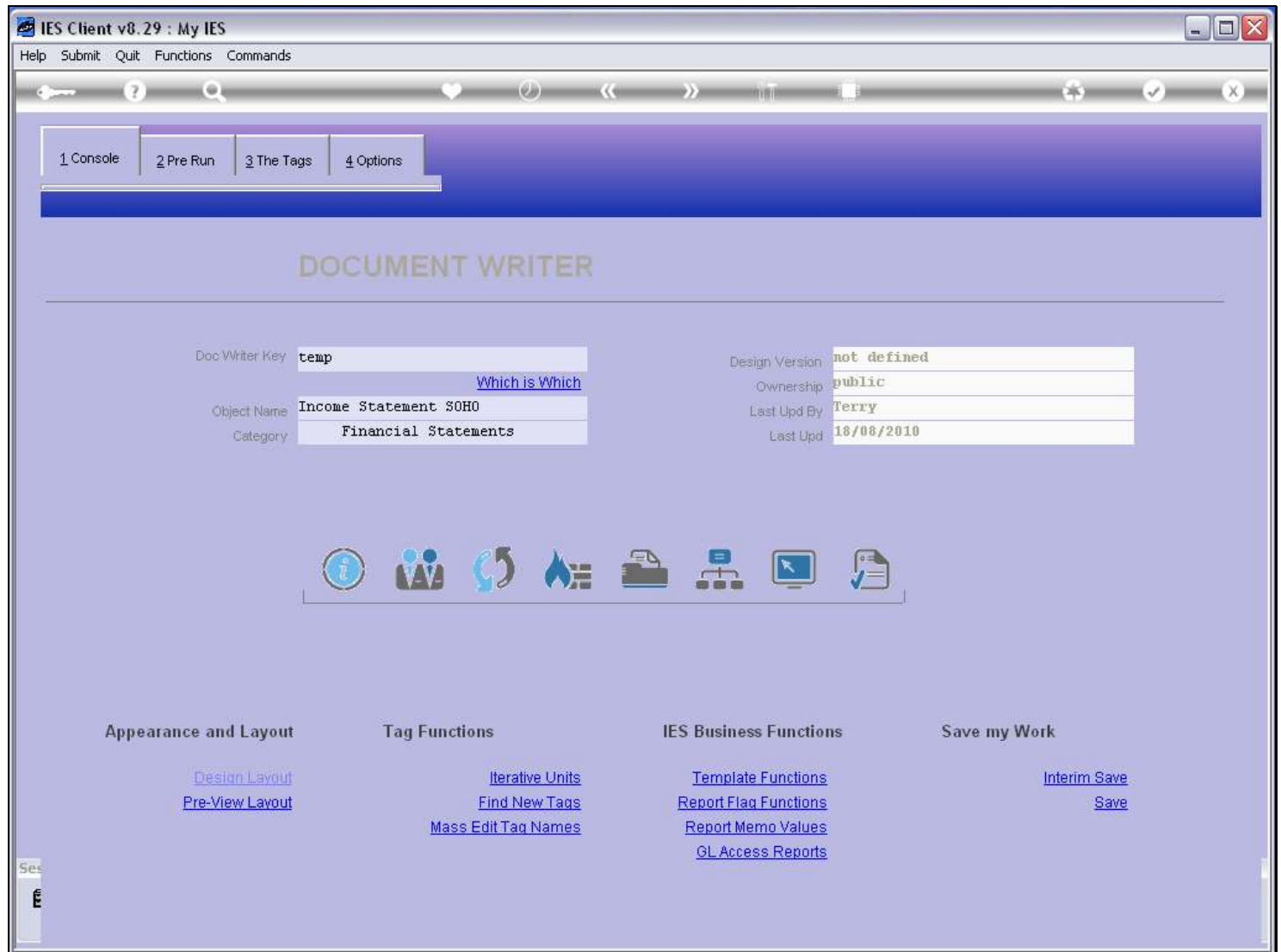
We will always use 'Find New Tags' if we have made any changes to the Layout that affect Tags.

Slide 14 - Slide 14



Slide notes

Slide 15 - Slide 15**Slide notes**

Slide 16 - Slide 16**Slide notes**

Slide 17 - Slide 17

IES Client v8.29 : My IES

Help Submit Quit Functions Commands

1 Console 2 Pre Run 3 The Tags 4 Options

Tag Result Macros: -

>>> Tags	Value Names	Exec It
1 0001	Co Name	1
2 0002	Period	1
3 0014	Stock Sales: Cur	1
4 0015	Stock Sales: Bud	1
5 0016	Stock Sales: YTD	1
6 0017	Stock Sales: YTD Bud	1
7 0018	Stock Sales: Ann Bud	1
8 0019	Other: Cur	1
9 0020	Other: Bud	1
10 0021	Other: YTD	1
11 0022	Other: YTD Bud	1
12 0023	Other: Ann Bud	1
13 0024	Tot Revenue: Cur	1
14 0025	Tot Revenue: Bud	1
15 0026	Tot Revenue: YTD	1
16 0027	Tot Revenue: YTD Bud	1
17 0028	Tot Revenue: Ann Bud	1
18 0003	0003	1
19 0030	Rent: Bud	1
20 0031	Rent: YTD	1
21 0032	Rent: YTD Bud	1
22 0033	Rent: Ann Bud	1
23 0034	Bad Debts: Cur	1
24 0035	Bad Debts: Bud	1
25 0036	Bad Debts: YTD	1

Where is that tag !

[Select from Tag List](#)

[Search for Tag Number](#)

[Search for Tag Name](#)

Current Tag Focus: -

Row 1

Tag # 0001

Name Co Name

[Open the Tag Macro](#)

Nex Pre Add Ins Ed Del

Slide notes

Now, if we look at the Tag list again, we can see the new Tag 3 that has been inserted, and does not have a Name yet, and we can also see that Tag 29 has been dropped.

Slide 18 - Slide 18

IES Client v8.29 : My IES

Help Submit Quit Functions Commands

1 Console2 Pre Run3 The Tags4 Options

Tag Result Macros: -

>>>	Tags	Value Names	Exec It
1	0001	Co Name	1
2	0002	Period	1
3	0014	Stock Sales: Cur	1
4	0015	Stock Sales: Bud	1
5	0016	Stock Sales: YTD	1
6	0017	Stock Sales: YTD Bud	1
7	0018	Stock Sales: Ann Bud	1
8	0019	Other: Cur	1
9	0020	Other: Bud	1
10	0021	Other: YTD	1
11	0022	Other: YTD Bud	1
12	0023	Other: Ann Bud	1
13	0024	Tot Revenue: Cur	1
14	0025	Tot Revenue: Bud	1
15	0026	Tot Revenue: YTD	1
16	0027	Tot Revenue: YTD Bud	1
17	0028	Tot Revenue: Ann Bud	1
18	0003	0003	1
19	0030	Rent: Bud	1
20	0031	Rent: YTD	1
21	0032	Rent: YTD Bud	1
22	0033	Rent: Ann Bud	1
23	0034	Bad Debts: Cur	1
24	0035	Bad Debts: Bud	1
25	0036	Bad Debts: YTD	1

NexPreAddInsEdDel

Where is that tag !

Select from Tag List

Search for Tag Number

Search for Tag Name

Current Tag Focus: -

Row1

Tag #0001

NameCo Name

Open the Tag Macro

Slide notes