



**Slide 2 - Slide 2**



**Slide notes**

## Slide 3 - Slide 3

Period ending												
	January	February	March	April	May	June	July	August	September	October	November	December
ing Cash At Bank	0002	0003	0004	0005	0006	0007	0008	0009	0010	0011	0012	0013
	0014	0015	0016	0017	0018	0019	0020	0021	0022	0023	0024	0025
l by or used in:												
	0026	0027	0028	0029	0030	0031	0032	0033	0034	0035	0036	0037
	0038	0039	0040	0041	0042	0043	0044	0045	0046	0047	0048	0049
payable)	0050	0051	0052	0053	0054	0055	0056	0057	0058	0059	0060	0061
	0062	0063	0064	0065	0066	0067	0068	0069	0070	0071	0072	0073
ies	0074	0075	0076	0077	0078	0079	0080	0081	0082	0083	0084	0085
s	0086	0087	0088	0089	0090	0091	0092	0093	0094	0095	0096	0097
y or used in:												
	0098	0099	0100	0101	0102	0103	0104	0105	0106	0107	0108	0109
	0110	0111	0112	0113	0114	0115	0116	0117	0118	0119	0120	0121
	0122	0123	0124	0125	0126	0127	0128	0129	0130	0131	0132	0133
s	0134	0135	0136	0137	0138	0139	0140	0141	0142	0143	0144	0145
by or used in:												
	0146	0147	0148	0149	0150	0151	0152	0153	0154	0155	0156	0157
	0158	0159	0160	0161	0162	0163	0164	0165	0166	0167	0168	0169
	0170	0171	0172	0173	0174	0175	0176	0177	0178	0179	0180	0181
	0182	0183	0184	0185	0186	0187	0188	0189	0190	0191	0192	0193
es	0194	0195	0196	0197	0198	0199	0200	0201	0202	0203	0204	0205
equivalents	0206	0207	0208	0209	0210	0211	0212	0213	0214	0215	0216	0217
ing Cash At Bank	0218	0219	0220	0221	0222	0223	0224	0225	0226	0227	0228	0229

## Slide notes

## Slide 4 - Slide 4

IES Client v8.29 : My IES

Help Submit Quit Functions Commands

1 Console 2 Pre Run 3 The Tags 4 Options

Tag Result Macros :-

>>> Tags	Value Names	Exec It
61 0061	AP Movement inc Decr Per 12	1
62 0062	Inventory dec Incr Per 1	1
63 0063	Inventory dec Incr Per 2	1
64 0064	Inventory dec Incr Per 3	1
65 0065	Inventory dec Incr Per 4	1
66 0066	Inventory dec Incr Per 5	1
67 0067	Inventory dec Incr Per 6	1
68 0068	Inventory dec Incr Per 7	1
69 0069	Inventory dec Incr Per 8	1
70 0070	Inventory dec Incr Per 9	1
71 0071	Inventory dec Incr Per 10	1
72 0072	Inventory dec Incr Per 11	1
73 0073	Inventory dec Incr Per 12	1
74 0074	Oper Activities Inc Decr Per 1	1
75 0075	Oper Activities Inc Decr Per 2	1
76 0076	Oper Activities Inc Decr Per 3	1
77 0077	Oper Activities Inc Decr Per 4	1
78 0078	Oper Activities Inc Decr Per 5	1
79 0079	Oper Activities Inc Decr Per 6	1
80 0080	Oper Activities Inc Decr Per 7	1
81 0081	Oper Activities Inc Decr Per 8	1
82 0082	Oper Activities Inc Decr Per 9	1
83 0083	Oper Activities Inc Decr Per 10	1
84 0084	Oper Activities Inc Decr Per 11	1
85 0085	Oper Activities Inc Decr Per 12	1

Where is that tag !

[Select from Tag List](#)

[Search for Tag Number](#)

[Search for Tag Name](#)

Current Tag Focus :-

Row	68
Tag #	0068
Name	Inventory dec Incr Per 7

[Open the Tag Macro](#)

Nex Pre Add Ins Ed Del

## Slide notes

Of course, we can always page back and forth on the Tag list.

Slide 5 - Slide 5

IES Client v8.29 : My IES

Help Submit Quit Functions Commands

1 Console2 Pre Run3 The Tags4 Options

Tag Result Macros: -

>>>	Tags	Value Names	Exec It
81	0081	Oper Activities Inc Decr Per 8	1
82	0082	Oper Activities Inc Decr Per 9	1
83	0083	Oper Activities Inc Decr Per 10	1
84	0084	Oper Activities Inc Decr Per 11	1
85	0085	Oper Activities Inc Decr Per 12	1
86	0086	Net Cash Flow Oper Per 1	1
87	0087	Net Cash Flow Oper Per 2	1
88	0088	Net Cash Flow Oper Per 3	1
89	0089	Net Cash Flow Oper Per 4	1
90	0090	Net Cash Flow Oper Per 5	1
91	0091	Net Cash Flow Oper Per 6	1
92	0092	Net Cash Flow Oper Per 7	1
93	0093	Net Cash Flow Oper Per 8	1
94	0094	Net Cash Flow Oper Per 9	1
95	0095	Net Cash Flow Oper Per 10	1
96	0096	Net Cash Flow Oper Per 11	1
97	0097	Net Cash Flow Oper Per 12	1
98	0098	Cap Exp Movement Per 1	1
99	0099	Cap Exp Movement Per 2	1
100	0100	Cap Exp Movement Per 3	1
101	0101	Cap Exp Movement Per 4	1
102	0102	Cap Exp Movement Per 5	1
103	0103	Cap Exp Movement Per 6	1
104	0104	Cap Exp Movement Per 7	1
105	0105	Cap Exp Movement Per 8	1

NexPreAddInsEdDel

Where is that tag !

Select from Tag List

Search for Tag Number

Search for Tag Name

Current Tag Focus: -

Row68

Tag #0068

NameInventory dec Incr Per 7

Open the Tag Macro

Slide notes

Slide 6 - Slide 6

IES Client v8.29 : My IES

Help Submit Quit Functions Commands

1 Console2 Pre Run3 The Tags4 Options

Tag Result Macros: -

	>>> Tags	Value Names	Exec It
81	0081	Oper Activities Inc Decr Per 8	1
82	0082	Oper Activities Inc Decr Per 9	1
83	0083	Oper Activities Inc Decr Per 10	1
84	0084	Oper Activities Inc Decr Per 11	1
85	0085	Oper Activities Inc Decr Per 12	1
86	0086	Net Cash Flow Oper Per 1	1
87	0087	Net Cash Flow Oper Per 2	1
88	0088	Net Cash Flow Oper Per 3	1
89	0089	Net Cash Flow Oper Per 4	1
90	0090	Net Cash Flow Oper Per 5	1
91	0091	Net Cash Flow Oper Per 6	1
92	0092	Net Cash Flow Oper Per 7	1
93	0093	Net Cash Flow Oper Per 8	1
94	0094	Net Cash Flow Oper Per 9	1
95	0095	Net Cash Flow Oper Per 10	1
96	0096	Net Cash Flow Oper Per 11	1
97	0097	Net Cash Flow Oper Per 12	1
98	0098	Cap Exp Movement Per 1	1
99	0099	Cap Exp Movement Per 2	1
100	0100	Cap Exp Movement Per 3	1
101	0101	Cap Exp Movement Per 4	1
102	0102	Cap Exp Movement Per 5	1
103	0103	Cap Exp Movement Per 6	1
104	0104	Cap Exp Movement Per 7	1
105	0105	Cap Exp Movement Per 8	1

NextPreAddInsEdDel

Where is that tag !

Select from Tag List

Search for Tag Number

Search for Tag Name

Current Tag Focus: -

Row68

Tag #0068

NameInventory dec Incr Per 7

Open the Tag Macro

Slide notes



## Slide 7 - Slide 7

IES Client v8.29 : My IES

Help Submit Quit Functions Commands

1 Console 2 Pre Run 3 The Tags 4 Options

Tag Result Macros: -

	>>> Tags	Value Names	Exec It
101	0101	Cap Exp Movement Per 4	1
102	0102	Cap Exp Movement Per 5	1
103	0103	Cap Exp Movement Per 6	1
104	0104	Cap Exp Movement Per 7	1
105	0105	Cap Exp Movement Per 8	1
106	0106	Cap Exp Movement Per 9	1
107	0107	Cap Exp Movement Per 10	1
108	0108	Cap Exp Movement Per 11	1
109	0109	Cap Exp Movement Per 12	1
110	0110	Investments Movement Per 1	1
111	0111	Investments Movement Per 2	1
112	0112	Investments Movement Per 3	1
113	0113	Investments Movement Per 4	1
114	0114	Investments Movement Per 5	1
115	0115	Investments Movement Per 6	1
116	0116	Investments Movement Per 7	1
117	0117	Investments Movement Per 8	1
118	0118	Investments Movement Per 9	1
119	0119	Investments Movement Per 10	1
120	0120	Investments Movement Per 11	1
121	0121	Investments Movement Per 12	1
122	0122	Investments Other Movement Per 1	1
123	0123	Investments Other Movement Per 2	1
124	0124	Investments Other Movement Per 3	1
125	0125	Investments Other Movement Per 4	1

Where is that tag !

[Select from Tag List](#)

[Search for Tag Number](#)

[Search for Tag Name](#)

Current Tag Focus: -

Row	68
Tag #	0068
Name	Inventory dec Incr Per 7

[Open the Tag Macro](#)

Nex Pre Add Ins Ed Del

## Slide notes

Slide 8 - Slide 8

IES Client v8.29 : My IES

Help Submit Quit Functions Commands

1 Console2 Pre Run3 The Tags4 Options

Tag Result Macros: -

>>> Tags	Value Names	Exec It
81 0081	Oper Activities Inc Decr Per 8	1
82 0082	Oper Activities Inc Decr Per 9	1
83 0083	Oper Activities Inc Decr Per 10	1
84 0084	Oper Activities Inc Decr Per 11	1
85 0085	Oper Activities Inc Decr Per 12	1
86 0086	Net Cash Flow Oper Per 1	1
87 0087	Net Cash Flow Oper Per 2	1
88 0088	Net Cash Flow Oper Per 3	1
89 0089	Net Cash Flow Oper Per 4	1
90 0090	Net Cash Flow Oper Per 5	1
91 0091	Net Cash Flow Oper Per 6	1
92 0092	Net Cash Flow Oper Per 7	1
93 0093	Net Cash Flow Oper Per 8	1
94 0094	Net Cash Flow Oper Per 9	1
95 0095	Net Cash Flow Oper Per 10	1
96 0096	Net Cash Flow Oper Per 11	1
97 0097	Net Cash Flow Oper Per 12	1
98 0098	Cap Exp Movement Per 1	1
99 0099	Cap Exp Movement Per 2	1
100 0100	Cap Exp Movement Per 3	1
101 0101	Cap Exp Movement Per 4	1
102 0102	Cap Exp Movement Per 5	1
103 0103	Cap Exp Movement Per 6	1
104 0104	Cap Exp Movement Per 7	1
105 0105	Cap Exp Movement Per 8	1

NexPreAddInsEdDel

Where is that tag !

Select from Tag List

Search for Tag Number

Search for Tag Name

Current Tag Focus: -

Row68

Tag #0068

NameInventory dec Incr Per 7

Open the Tag Macro

Slide notes



## Slide 9 - Slide 9

IES Client v8.29 : My IES

Help Submit Quit Functions Commands

1 Console 2 Pre Run 3 The Tags 4 Options

Tag Result Macros: -

>>> Tags	Value Names	Exec It
1 0001	Year	1
2 0002	Cash at Bank Per 1	2
3 0003	Cash at Bank Per 2	2
4 0004	Cash at Bank Per 3	2
5 0005	Cash at Bank Per 4	2
6 0006	Cash at Bank Per 5	2
7 0007	Cash at Bank Per 6	2
8 0008	Cash at Bank Per 7	2
9 0009	Cash at Bank Per 8	2
10 0010	Cash at Bank Per 9	2
11 0011	Cash at Bank Per 10	2
12 0012	Cash at Bank Per 11	2
13 0013	Cash at Bank Per 12	2
14 0014	Net Income Per 1	1
15 0015	Net Income Per 2	1
16 0016	Net Income Per 3	1
17 0017	Net Income Per 4	1
18 0018	Net Income Per 5	1
19 0019	Net Income Per 6	1
20 0020	Net Income Per 7	1
21 0021	Net Income Per 8	1
22 0022	Net Income Per 9	1
23 0023	Net Income Per 10	1
24 0024	Net Income Per 11	1
25 0025	Net Income Per 12	1

Where is that tag !

[Select from Tag List](#)

[Search for Tag Number](#)

[Search for Tag Name](#)

Current Tag Focus: -

Row 1

Tag # 0001

Name Year

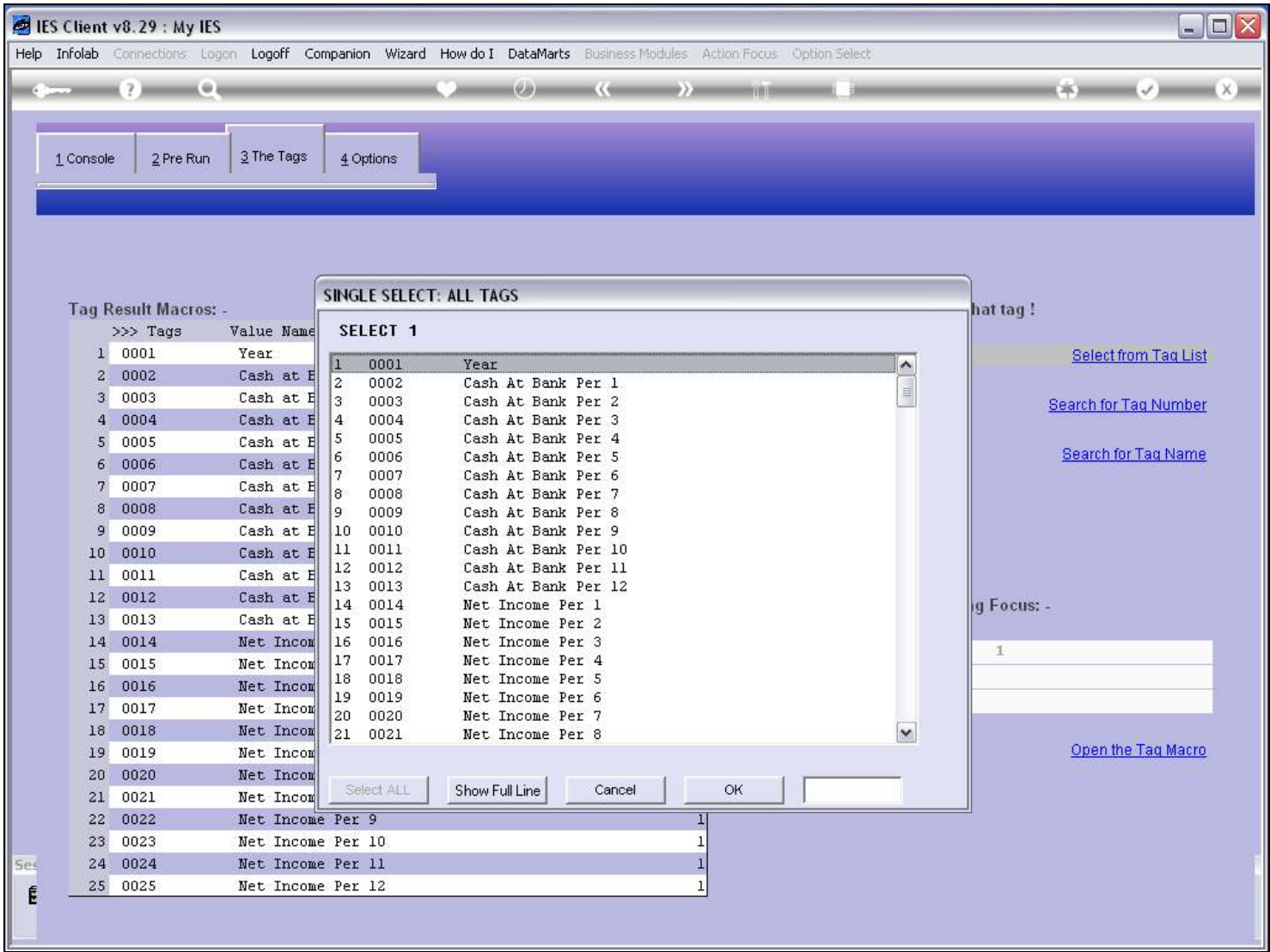
[Open the Tag Macro](#)

Nex Pre Add Ins Ed Del

## Slide notes

But we also have 3 special functions to home into a certain Tag.

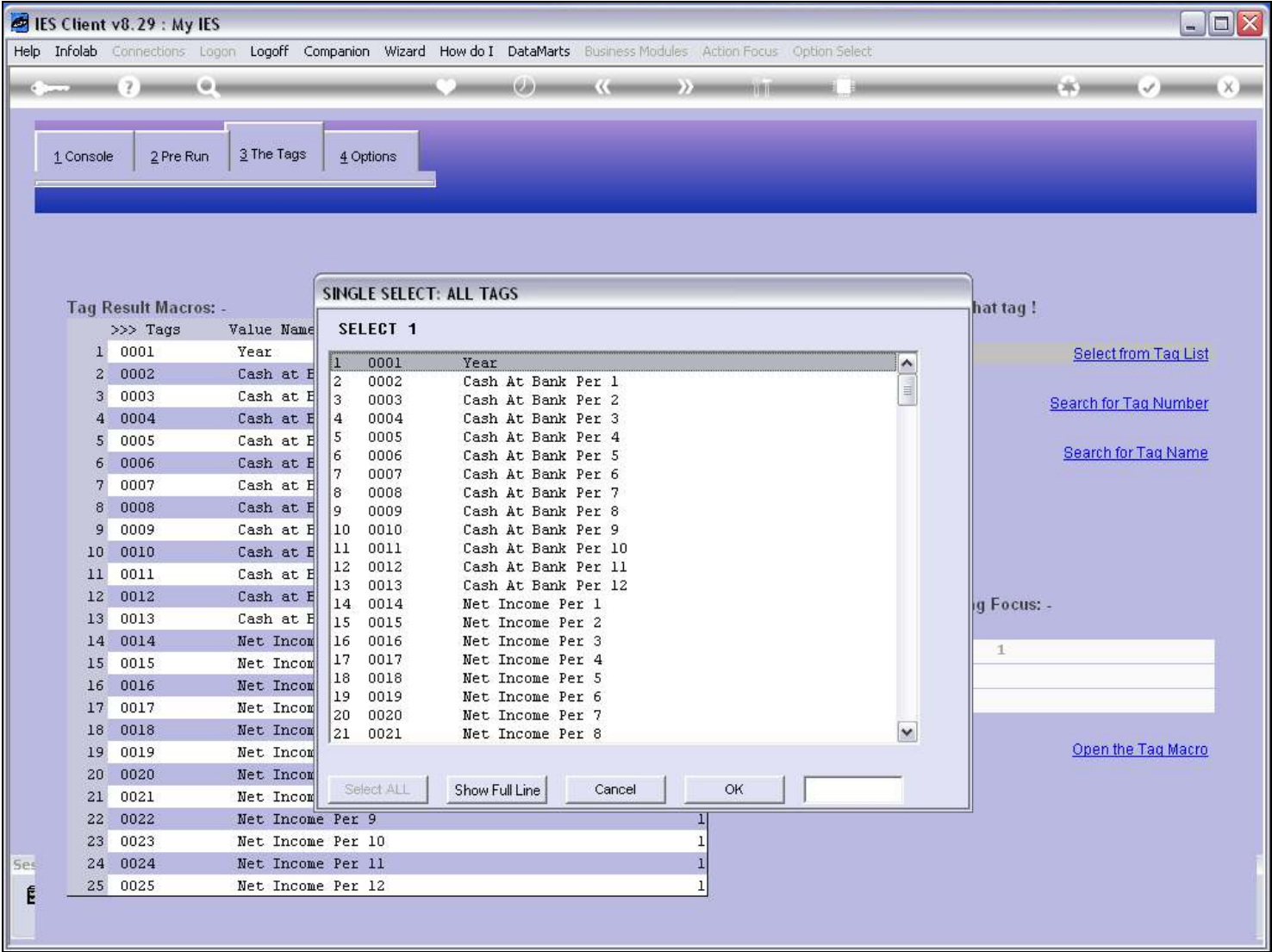
Slide 10 - Slide 10



Slide notes

The 1st option is to select the wanted Tag from the Tag list lookup.

Slide 11 - Slide 11



Slide notes

Slide 12 - Slide 12

IES Client v8.29 : My IES

Help Infolab Connections Logon Logoff Companion Wizard How do I DataMarts Business Modules Action Focus Option Select

1 Console2 Pre Run3 The Tags4 Options

Tag Result Macros: ->>> TagsValue Name1 0001 Year2 0002 Cash at E3 0003 Cash at E4 0004 Cash at E5 0005 Cash at E6 0006 Cash at E7 0007 Cash at E8 0008 Cash at E9 0009 Cash at E10 0010 Cash at E11 0011 Cash at E12 0012 Cash at E13 0013 Cash at E14 0014 Net Income15 0015 Net Income16 0016 Net Income17 0017 Net Income18 0018 Net Income19 0019 Net Income20 0020 Net Income21 0021 Net Income22 0022 Net Income Per 923 0023 Net Income Per 1024 0024 Net Income Per 1125 0025 Net Income Per 12

SINGLE SELECT: ALL TAGS

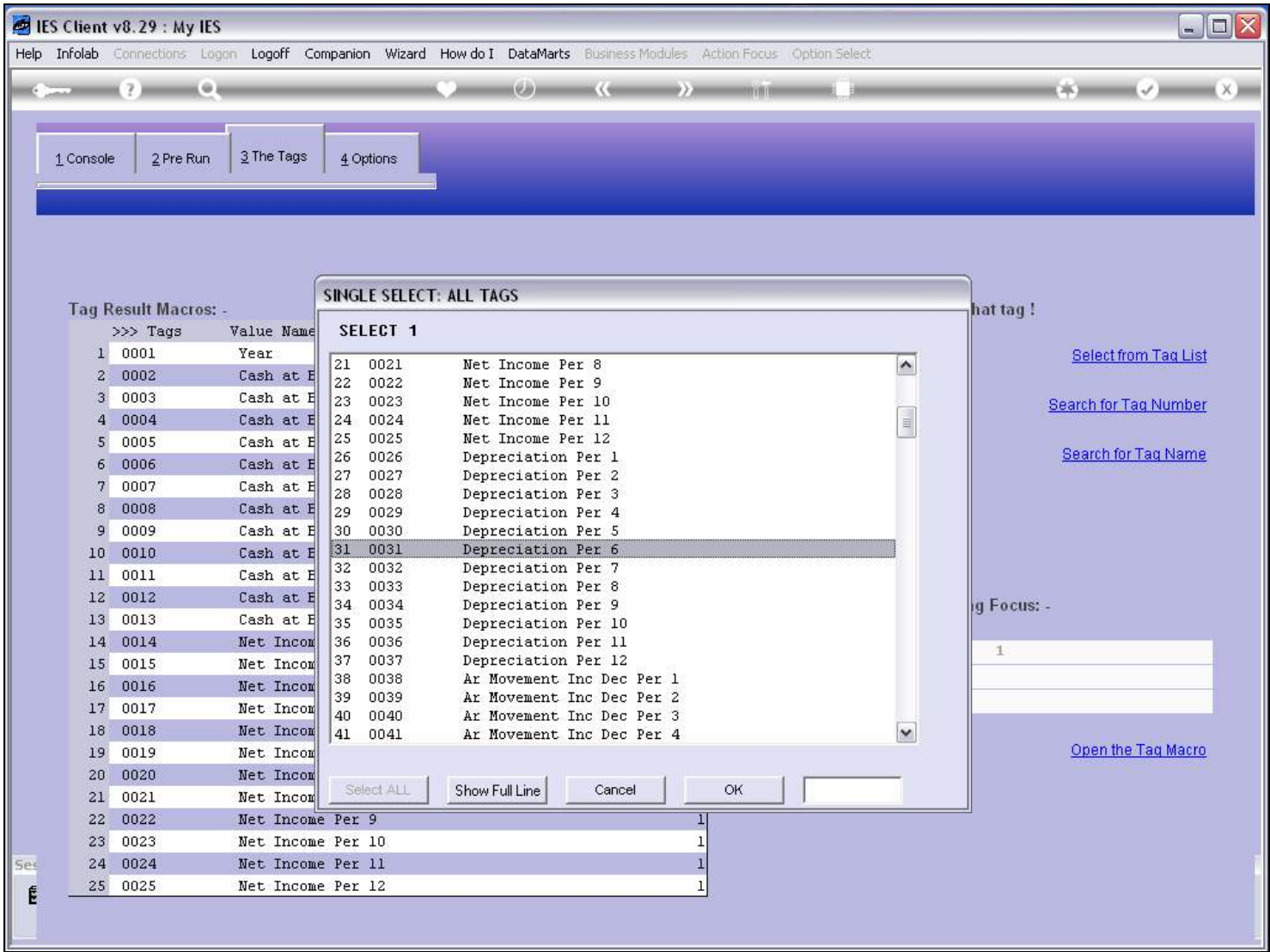
SELECT 121 0021 Net Income Per 822 0022 Net Income Per 923 0023 Net Income Per 1024 0024 Net Income Per 1125 0025 Net Income Per 1226 0026 Depreciation Per 127 0027 Depreciation Per 228 0028 Depreciation Per 329 0029 Depreciation Per 430 0030 Depreciation Per 531 0031 Depreciation Per 632 0032 Depreciation Per 733 0033 Depreciation Per 834 0034 Depreciation Per 935 0035 Depreciation Per 1036 0036 Depreciation Per 1137 0037 Depreciation Per 1238 0038 Ar Movement Inc Dec Per 139 0039 Ar Movement Inc Dec Per 240 0040 Ar Movement Inc Dec Per 341 0041 Ar Movement Inc Dec Per 4

Select ALLShow Full LineCancelOK

hat tag !  
[Select from Tag List](#)  
[Search for Tag Number](#)  
[Search for Tag Name](#)  
g Focus: -  
1  
[Open the Tag Macro](#)

Slide notes

Slide 13 - Slide 13



Slide notes



## Slide 14 - Slide 14

IES Client v8.29 : My IES

Help Submit Quit Functions Commands

1 Console 2 Pre Run 3 The Tags 4 Options

Tag Result Macros: -

>>> Tags	Value Names	Exec It
21 0021	Net Income Per 8	1
22 0022	Net Income Per 9	1
23 0023	Net Income Per 10	1
24 0024	Net Income Per 11	1
25 0025	Net Income Per 12	1
26 0026	Depreciation Per 1	1
27 0027	Depreciation Per 2	1
28 0028	Depreciation Per 3	1
29 0029	Depreciation Per 4	1
30 0030	Depreciation Per 5	1
31 0031	Depreciation Per 6	1
32 0032	Depreciation Per 7	1
33 0033	Depreciation Per 8	1
34 0034	Depreciation Per 9	1
35 0035	Depreciation Per 10	1
36 0036	Depreciation Per 11	1
37 0037	Depreciation Per 12	1
38 0038	AR Movement Inc Dec Per 1	1
39 0039	AR Movement Inc Dec Per 2	1
40 0040	AR Movement Inc Dec Per 3	1
41 0041	AR Movement Inc Dec Per 4	1
42 0042	AR Movement Inc Dec Per 5	1
43 0043	AR Movement Inc Dec Per 6	1
44 0044	AR Movement Inc Dec Per 7	1
45 0045	AR Movement Inc Dec Per 8	1

Where is that tag !

[Select from Tag List](#)

[Search for Tag Number](#)

[Search for Tag Name](#)

Current Tag Focus: -

Row	31
Tag #	0031
Name	Depreciation Per 6

[Open the Tag Macro](#)

Nex Pre Add Ins Ed Del

## Slide notes

Note that when we select a Tag, it becomes the FOCUS TAG, and it appears on the Tag Page on the left.

Slide 15 - Slide 15

IES Client v8.29 : My IES

Help Submit Quit Functions Commands

1 Console

2 Pre Run

3 The Tags

4 Options

Tag Result Macros: -

>>> Tags	Value Names	Exec It
21 0021	Net Income Per 8	1
22 0022	Net Income Per 9	1
23 0023	Net Income Per 10	1
24 0024	Net Income Per 11	1
25 0025	Net Income Per 12	1
26 0026	Depreciation Per 1	1
27 0027	Depreciation Per 2	1
28 0028	Depreciation Per 3	1
29 0029	Depreciation Per 4	1
30 0030	Depreciation Per 5	1
31 0031	Depreciation Per 6	1
32 0032	Depreciation Per 7	1
33 0033	Depreciation Per 8	1
34 0034	Depreciation Per 9	1
35 0035	Depreciation Per 10	1
36 0036	Depreciation Per 11	1
37 0037	Depreciation Per 12	1
38 0038	AR Movement Inc Dec Per 1	1
39 0039	AR Movement Inc Dec Per 2	1
40 0040	AR Movement Inc Dec Per 3	1
41 0041	AR Movement Inc Dec Per 4	1
42 0042	AR Movement Inc Dec Per 5	1
43 0043	AR Movement Inc Dec Per 6	1
44 0044	AR Movement Inc Dec Per 7	1
45 0045	AR Movement Inc Dec Per 8	1

Nex

Pre

Add

Ins

Ed

Del

Where is that tag !

Select from Tag List

Search for Tag Number

Search for Tag Name

Current Tag Focus: -

Row31

Tag #0031

NameDepreciation Per 6

Open the Tag Macro

Slide notes

## Slide 16 - Slide 16

IES Client v8.29 : My IES

Help Submit Quit Functions Commands

1 Console 2 Pre Run 3 The Tags 4 Options

Tag Result Macros: -

>>> Tags	Value Names	Exec It
21 0021	Net Income Per 8	1
22 0022	Net Income Per 9	1
23 0023	Net Income Per 10	1
24 0024	Net Income Per 11	1
25 0025	Net Income Per 12	1
26 0026	Depreciation Per 1	1
27 0027	Depreciation Per 2	1
28 0028	Depreciation Per 3	1
29 0029	Depreciation Per 4	1
30 0030	Depreciation Per 5	1
31 0031	Depreciation Per 6	1
32 0032	Depreciation Per 7	1
33 0033	Depreciation Per 8	1
34 0034	Depreciation Per 9	1
35 0035	Depreciation Per 10	1
36 0036	Depreciation Per 11	1
37 0037	Depreciation Per 12	1
38 0038	AR Movement Inc Dec Per 1	1
39 0039	AR Movement Inc Dec Per 2	1
40 0040	AR Movement Inc Dec Per 3	1
41 0041	AR Movement Inc Dec Per 4	1
42 0042	AR Movement Inc Dec Per 5	1
43 0043	AR Movement Inc Dec Per 6	1
44 0044	AR Movement Inc Dec Per 7	1
45 0045	AR Movement Inc Dec Per 8	1

Where is that tag !

[Select from Tag List](#)

[Search for Tag Number](#)

[Search for Tag Name](#)

Current Tag Focus: -

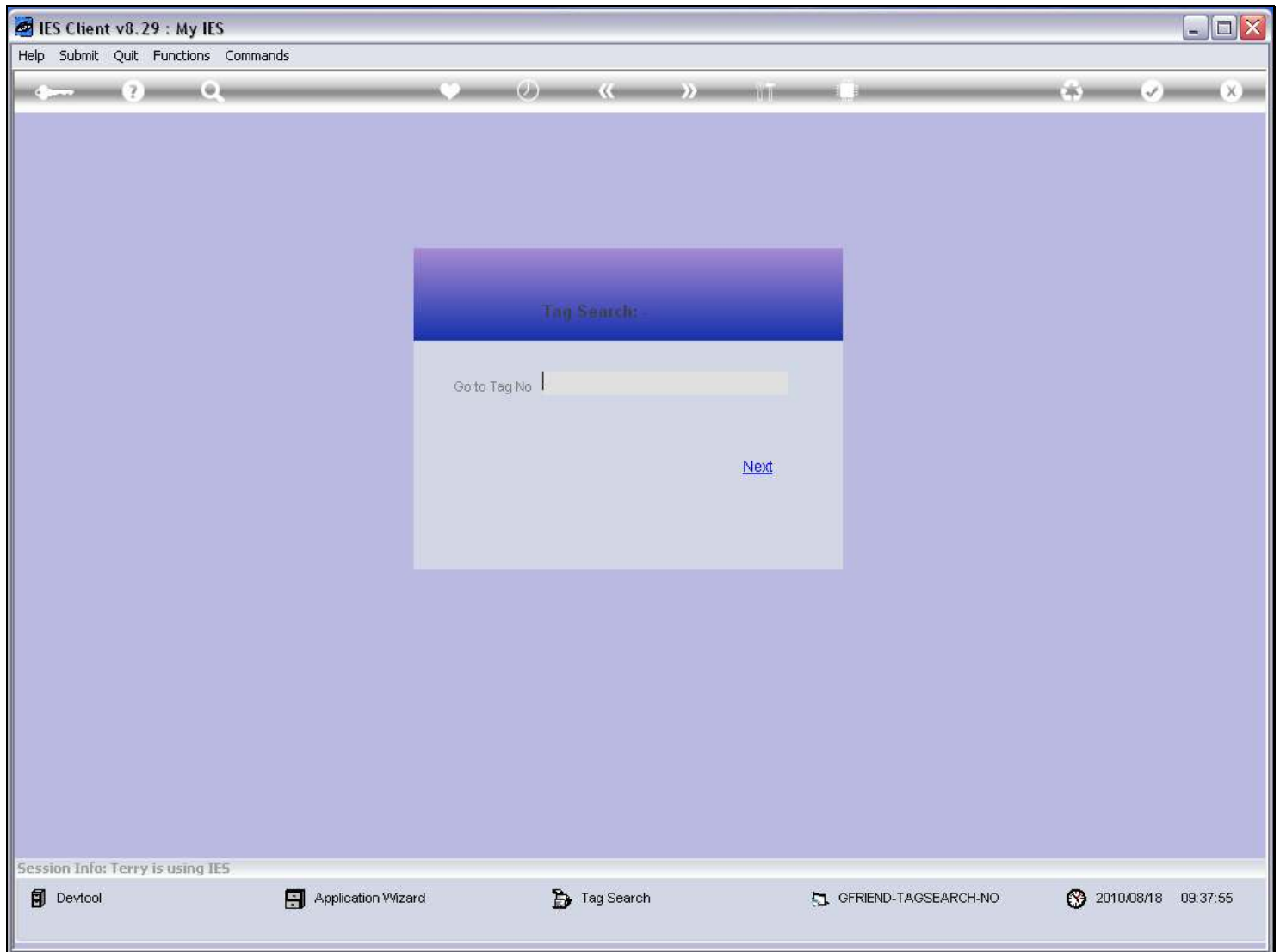
Row	31
Tag #	0031
Name	Depreciation Per 6

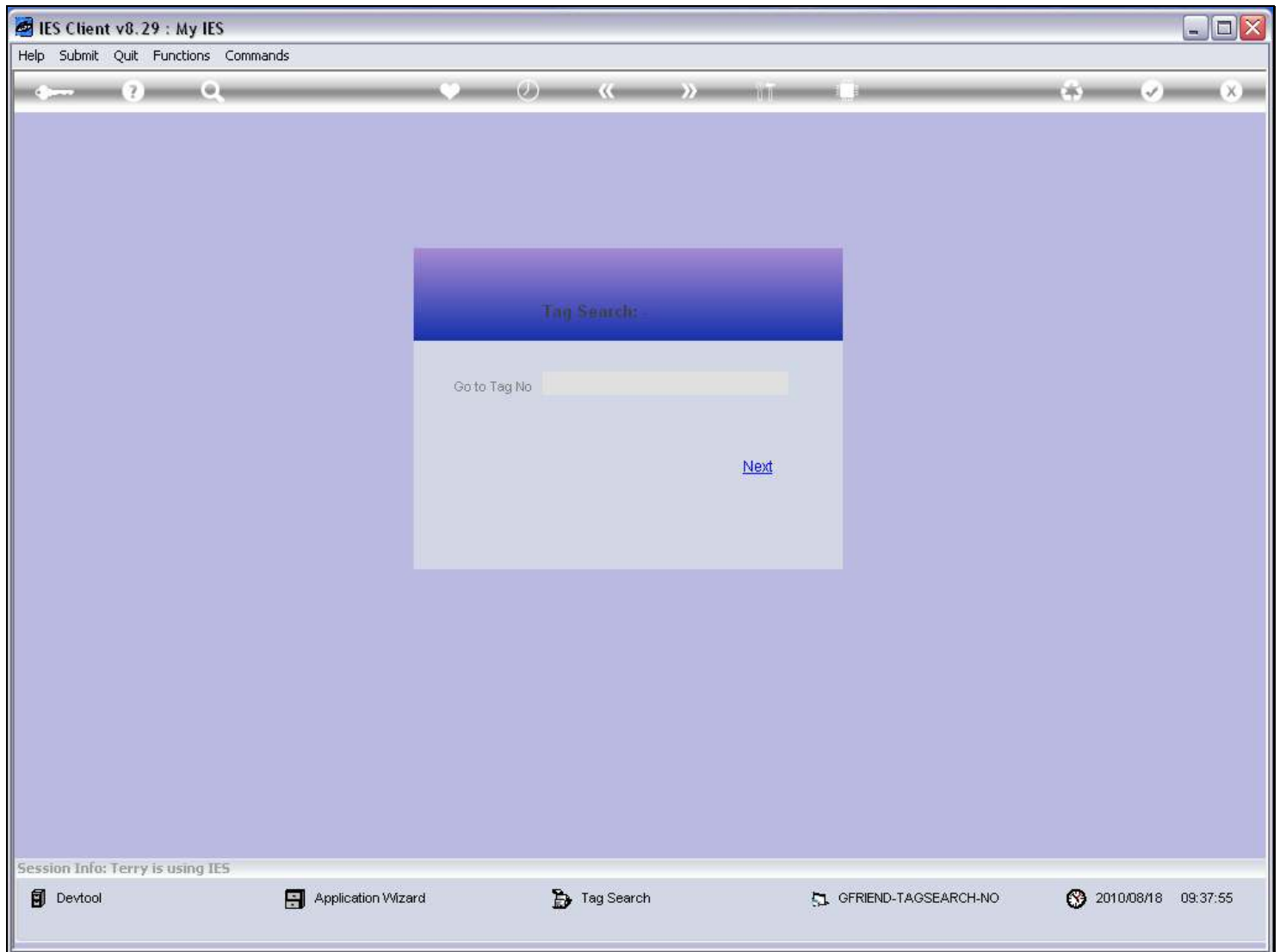
[Open the Tag Macro](#)

Nex Pre Add Ins Ed Del

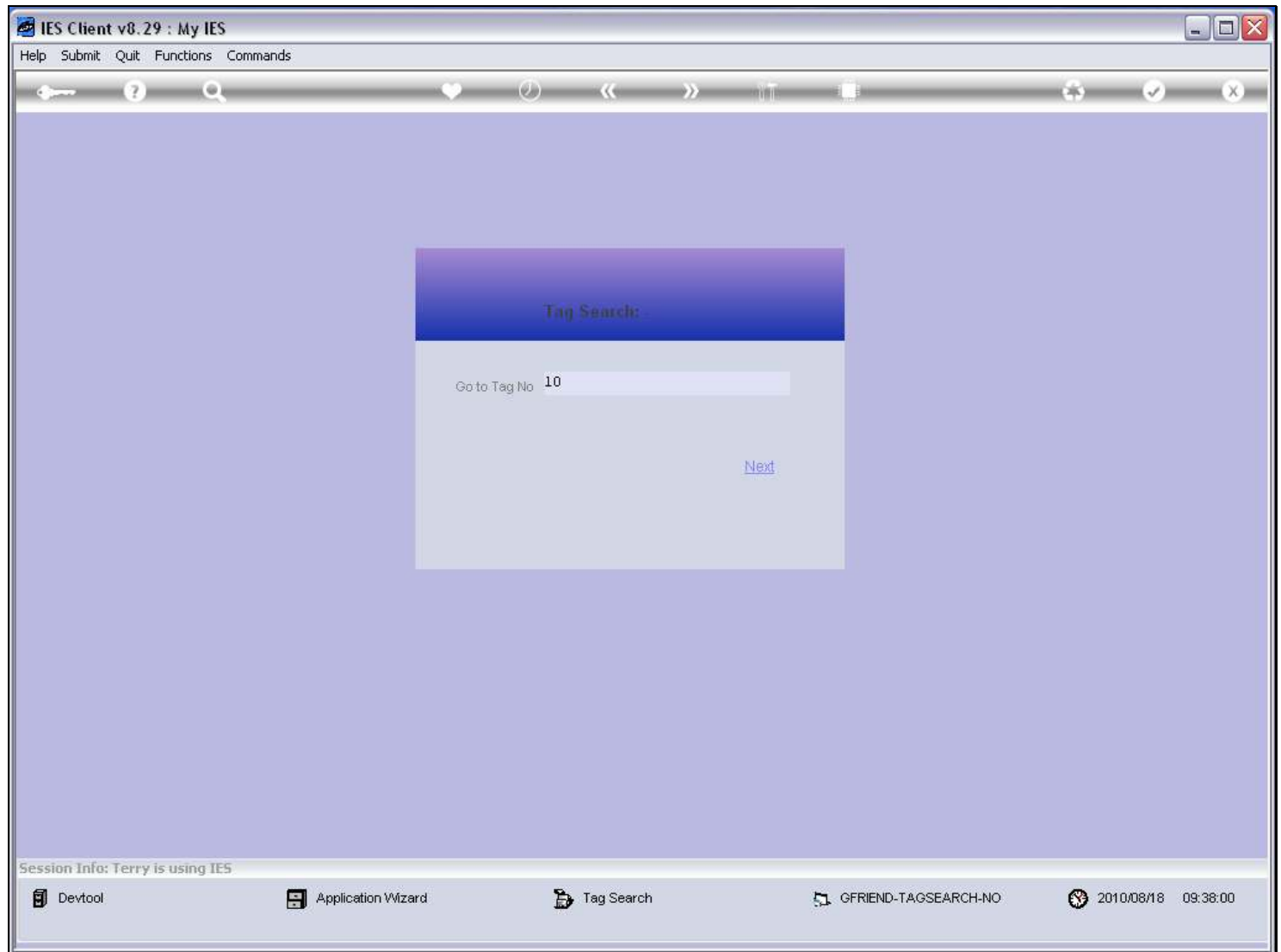
## Slide notes

The next option is to find the Tag by Number.

**Slide 17 - Slide 17****Slide notes**

**Slide 18 - Slide 18****Slide notes**



**Slide 19 - Slide 19****Slide notes**

Slide 20 - Slide 20

IES Client v8.29 : My IES

Help   Infolab   Connections   Logon   Logoff   Companion   Wizard   How do I   DataMarts   Business Modules   Action Focus   Option Select

1 Console

2 Pre Run

3 The Tags

4 Options

Tag Result Macros: -

>>>	Tags	Value Names	Exec It
21	0021	Net Income Per 8	1
22	0022	Net Income Per 9	1
23	0023	Net Income Per 10	1
24	0024	Net Income Per 11	1
25	0025	Net Income Per 12	1
26	0026	Depreciation Per 1	1
27	0027	Depreciation Per 2	1
28	0028	Depreciation Per 3	1
29	0029	Depreciation Per 4	1
30	0030	Depreciation Per 5	1
31	0031	Depreciation Per 6	1
32	0032	Depreciation Per 7	1
33	0033	Depreciation Per 8	1
34	0034	Depreciation Per 9	1
35	0035	Depreciation Per 10	1
36	0036	Depreciation Per 11	1
37	0037	Depreciation Per 12	1
38	0038	AR Movement Inc Dec Per 1	1
39	0039	AR Movement Inc Dec Per 2	1
40	0040	AR Movement Inc Dec Per 3	1
41	0041	AR Movement Inc Dec Per 4	1
42	0042	AR Movement Inc Dec Per 5	1
43	0043	AR Movement Inc Dec Per 6	1
44	0044	AR Movement Inc Dec Per 7	1
45	0045	AR Movement Inc Dec Per 8	1

Where is that tag !

[Select from Tag List](#)

Search for Tag Number

[Search for Tag Name](#)

Current Tag Focus: -

Row

31

Tag #

0031

Name

Depreciation Per 6

[Open the Tag Macro](#)

Slide notes

Slide 21 - Slide 21

IES Client v8.29 : My IES

Help Submit Quit Functions Commands

1 Console2 Pre Run3 The Tags4 Options

Tag Result Macros: -

>>>	Tags	Value Names	Exec It
1	0001	Year	1
2	0002	Cash at Bank Per 1	2
3	0003	Cash at Bank Per 2	2
4	0004	Cash at Bank Per 3	2
5	0005	Cash at Bank Per 4	2
6	0006	Cash at Bank Per 5	2
7	0007	Cash at Bank Per 6	2
8	0008	Cash at Bank Per 7	2
9	0009	Cash at Bank Per 8	2
10	0010	Cash at Bank Per 9	2
11	0011	Cash at Bank Per 10	2
12	0012	Cash at Bank Per 11	2
13	0013	Cash at Bank Per 12	2
14	0014	Net Income Per 1	1
15	0015	Net Income Per 2	1
16	0016	Net Income Per 3	1
17	0017	Net Income Per 4	1
18	0018	Net Income Per 5	1
19	0019	Net Income Per 6	1
20	0020	Net Income Per 7	1
21	0021	Net Income Per 8	1
22	0022	Net Income Per 9	1
23	0023	Net Income Per 10	1
24	0024	Net Income Per 11	1
25	0025	Net Income Per 12	1

NexPreAddInsEdDel

Where is that tag !

[Select from Tag List](#)

Search for Tag Number

[Search for Tag Name](#)

Current Tag Focus: -

Row10

Tag #0010

NameCash at Bank Per 9

[Open the Tag Macro](#)

Slide notes

Slide 22 - Slide 22

IES Client v8.29 : My IES

Help Submit Quit Functions Commands

1 Console2 Pre Run3 The Tags4 Options

Tag Result Macros: -

>>>	Tags	Value Names	Exec It
1	0001	Year	1
2	0002	Cash at Bank Per 1	2
3	0003	Cash at Bank Per 2	2
4	0004	Cash at Bank Per 3	2
5	0005	Cash at Bank Per 4	2
6	0006	Cash at Bank Per 5	2
7	0007	Cash at Bank Per 6	2
8	0008	Cash at Bank Per 7	2
9	0009	Cash at Bank Per 8	2
10	0010	Cash at Bank Per 9	2
11	0011	Cash at Bank Per 10	2
12	0012	Cash at Bank Per 11	2
13	0013	Cash at Bank Per 12	2
14	0014	Net Income Per 1	1
15	0015	Net Income Per 2	1
16	0016	Net Income Per 3	1
17	0017	Net Income Per 4	1
18	0018	Net Income Per 5	1
19	0019	Net Income Per 6	1
20	0020	Net Income Per 7	1
21	0021	Net Income Per 8	1
22	0022	Net Income Per 9	1
23	0023	Net Income Per 10	1
24	0024	Net Income Per 11	1
25	0025	Net Income Per 12	1

NexPreAddInsEdDel

Where is that tag !

Select from Tag List

Search for Tag Number

Search for Tag Name

Current Tag Focus: -

Row10

Tag #0010

NameCash at Bank Per 9

Open the Tag Macro

Slide notes

## Slide 23 - Slide 23

IES Client v8.29 : My IES

Help Submit Quit Functions Commands

1 Console 2 Pre Run 3 The Tags 4 Options

Tag Result Macros: -

>>> Tags	Value Names	Exec It
1 0001	Year	1
2 0002	Cash at Bank Per 1	2
3 0003	Cash at Bank Per 2	2
4 0004	Cash at Bank Per 3	2
5 0005	Cash at Bank Per 4	2
6 0006	Cash at Bank Per 5	2
7 0007	Cash at Bank Per 6	2
8 0008	Cash at Bank Per 7	2
9 0009	Cash at Bank Per 8	2
10 0010	Cash at Bank Per 9	2
11 0011	Cash at Bank Per 10	2
12 0012	Cash at Bank Per 11	2
13 0013	Cash at Bank Per 12	2
14 0014	Net Income Per 1	1
15 0015	Net Income Per 2	1
16 0016	Net Income Per 3	1
17 0017	Net Income Per 4	1
18 0018	Net Income Per 5	1
19 0019	Net Income Per 6	1
20 0020	Net Income Per 7	1
21 0021	Net Income Per 8	1
22 0022	Net Income Per 9	1
23 0023	Net Income Per 10	1
24 0024	Net Income Per 11	1
25 0025	Net Income Per 12	1

Where is that tag !

[Select from Tag List](#)

[Search for Tag Number](#)

[Search for Tag Name](#)

Current Tag Focus: -

Row	10
Tag #	0010
Name	Cash at Bank Per 9

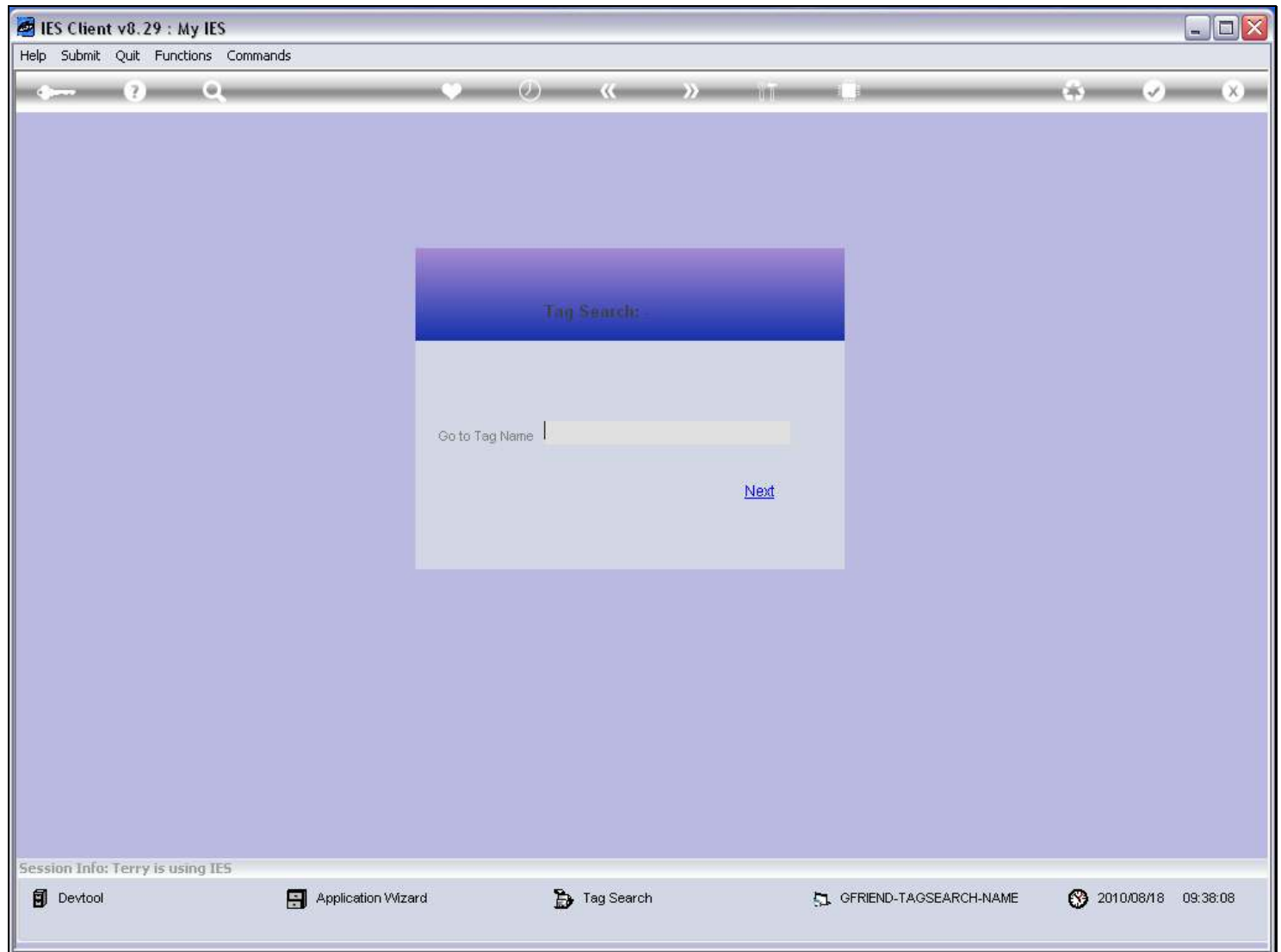
[Open the Tag Macro](#)

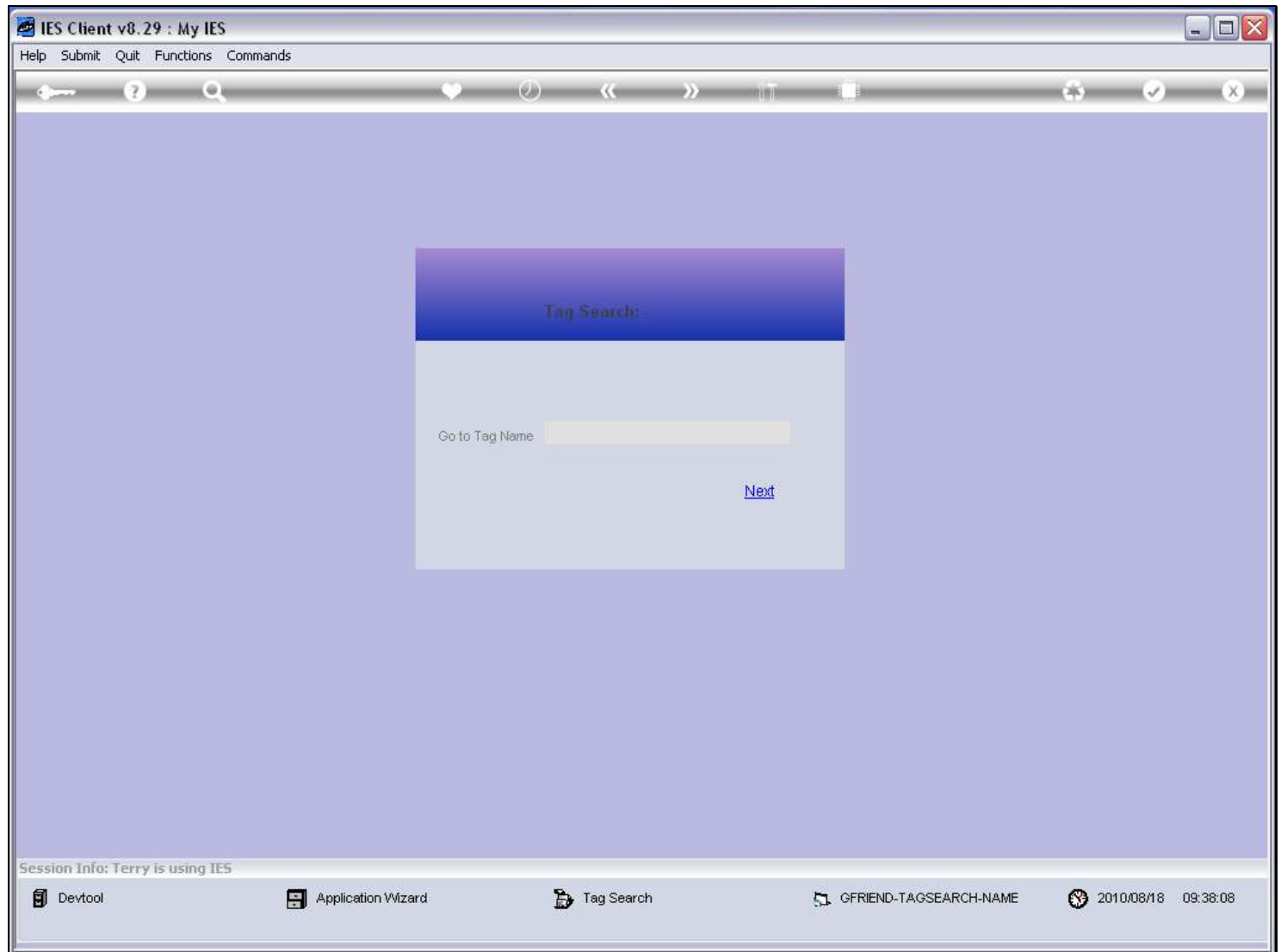
Nex Pre Add Ins Ed Del

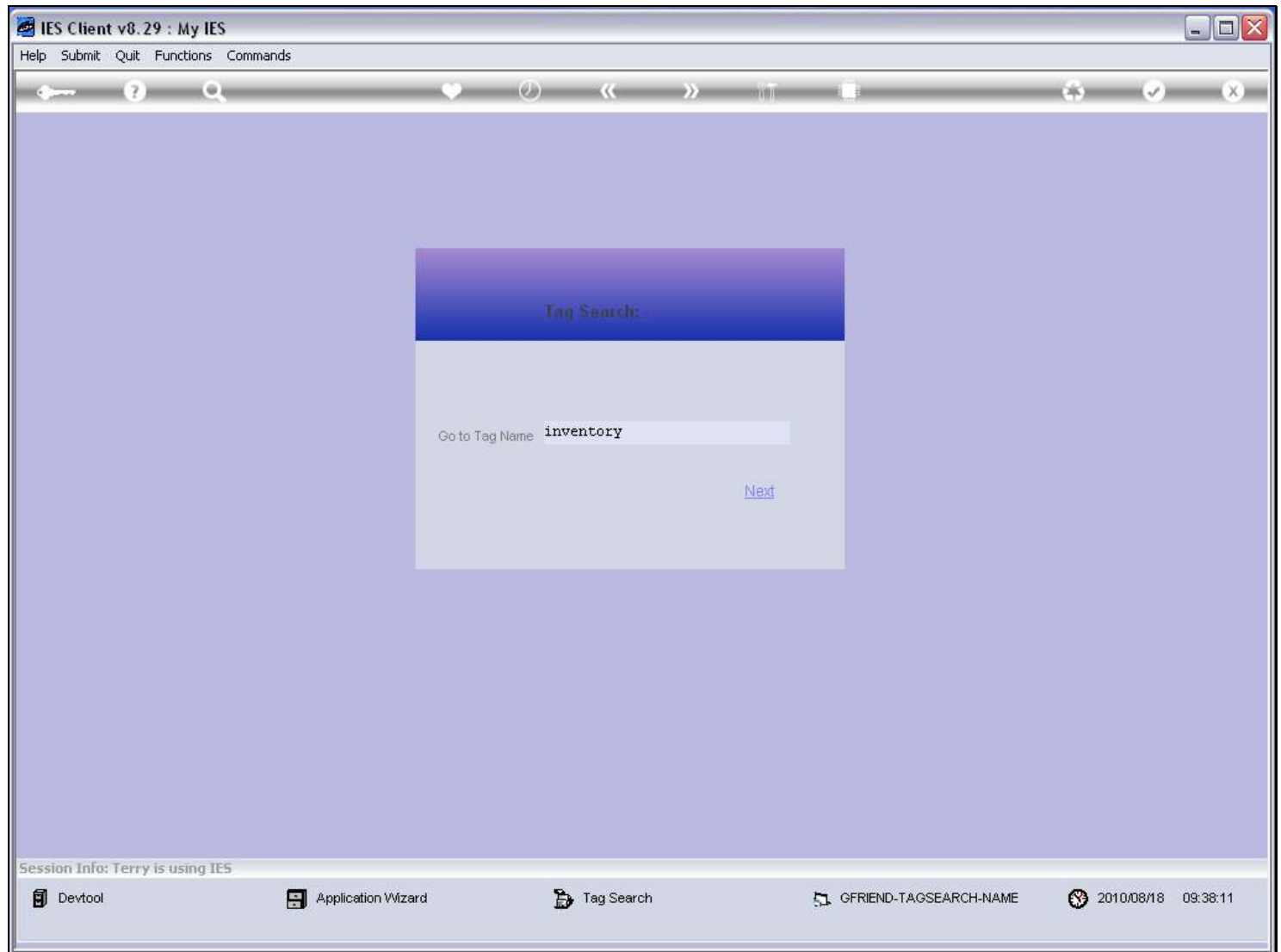
## Slide notes

And the 3rd option is to find it by Name.



**Slide 24 - Slide 24****Slide notes**

**Slide 25 - Slide 25****Slide notes**

**Slide 26 - Slide 26****Slide notes**

Slide 27 - Slide 27

IES Client v8.29 : My IES

Help   Infolab   Connections   Logon   Logoff   Companion   Wizard   How do I   DataMarts   Business Modules   Action Focus   Option Select

1 Console

2 Pre Run

3 The Tags

4 Options

Tag Result Macros: -

>>>	Tags	Value Names	Exec It
1	0001	Year	1
2	0002	Cash at Bank Per 1	2
3	0003	Cash at Bank Per 2	2
4	0004	Cash at Bank Per 3	2
5	0005	Cash at Bank Per 4	2
6	0006	Cash at Bank Per 5	2
7	0007	Cash at Bank Per 6	2
8	0008	Cash at Bank Per 7	2
9	0009	Cash at Bank Per 8	2
10	0010	Cash at Bank Per 9	2
11	0011	Cash at Bank Per 10	2
12	0012	Cash at Bank Per 11	2
13	0013	Cash at Bank Per 12	2
14	0014	Net Income Per 1	1
15	0015	Net Income Per 2	1
16	0016	Net Income Per 3	1
17	0017	Net Income Per 4	1
18	0018	Net Income Per 5	1
19	0019	Net Income Per 6	1
20	0020	Net Income Per 7	1
21	0021	Net Income Per 8	1
22	0022	Net Income Per 9	1
23	0023	Net Income Per 10	1
24	0024	Net Income Per 11	1
25	0025	Net Income Per 12	1

Where is that tag !

[Select from Tag List](#)

[Search for Tag Number](#)

[Search for Tag Name](#)

Current Tag Focus: -

Row

10

Tag #

0010

Name

Cash at Bank Per 9

[Open the Tag Macro](#)

Slide notes

Slide 28 - Slide 28

IES Client v8.29 : My IES

Help Infolab Connections Logon Logoff Companion Wizard How do I DataMarts Business Modules Action Focus Option Select

1 Console2 Pre Run3 The Tags4 Options

Tag Result Macros: -

>>> Tags	Value Name	Exec It
1 0001	Year	
2 0002	Cash at E	
3 0003	Cash at E	
4 0004	Cash at E	
5 0005	Cash at E	
6 0006	Cash at E	
7 0007	Cash at E	
8 0008	Cash at E	
9 0009	Cash at E	
10 0010	Cash at E	
11 0011	Cash at E	
12 0012	Cash at E	
13 0013	Cash at E	
14 0014	Net Incom	
15 0015	Net Incom	
16 0016	Net Incom	
17 0017	Net Incom	
18 0018	Net Incom	
19 0019	Net Incom	
20 0020	Net Income Per 7	1
21 0021	Net Income Per 8	1
22 0022	Net Income Per 9	1
23 0023	Net Income Per 10	1
24 0024	Net Income Per 11	1
25 0025	Net Income Per 12	1

Where is that tag !

[Select from Tag List](#)

[Search for Tag Number](#)

[Search for Tag Name](#)

g Focus: -

10

ank Per 9

[Open the Tag Macro](#)

SINGLE SELECT: MATCHING TAG NAMES

SELECT 1

1	0062	Inventory Dec	Incr	Per 1
2	0063	Inventory Dec	Incr	Per 2
3	0064	Inventory Dec	Incr	Per 3
4	0065	Inventory Dec	Incr	Per 4
5	0066	Inventory Dec	Incr	Per 5
6	0067	Inventory Dec	Incr	Per 6
7	0068	Inventory Dec	Incr	Per 7
8	0069	Inventory Dec	Incr	Per 8
9	0070	Inventory Dec	Incr	Per 9
10	0071	Inventory Dec	Incr	Per 10
11	0072	Inventory Dec	Incr	Per 11
12	0073	Inventory Dec	Incr	Per 12

Select ALLShow Full LineCancelOK

Slide notes



Slide 29 - Slide 29

IES Client v8.29 : My IES

Help Submit Quit Functions Commands

1 Console2 Pre Run3 The Tags4 Options

Tag Result Macros: -

>>>	Tags	Value Names	Exec It
61	0061	AP Movement inc Decr Per 12	1
62	0062	Inventory dec Incr Per 1	1
63	0063	Inventory dec Incr Per 2	1
64	0064	Inventory dec Incr Per 3	1
65	0065	Inventory dec Incr Per 4	1
66	0066	Inventory dec Incr Per 5	1
67	0067	Inventory dec Incr Per 6	1
68	0068	Inventory dec Incr Per 7	1
69	0069	Inventory dec Incr Per 8	1
70	0070	Inventory dec Incr Per 9	1
71	0071	Inventory dec Incr Per 10	1
72	0072	Inventory dec Incr Per 11	1
73	0073	Inventory dec Incr Per 12	1
74	0074	Oper Activities Inc Decr Per 1	1
75	0075	Oper Activities Inc Decr Per 2	1
76	0076	Oper Activities Inc Decr Per 3	1
77	0077	Oper Activities Inc Decr Per 4	1
78	0078	Oper Activities Inc Decr Per 5	1
79	0079	Oper Activities Inc Decr Per 6	1
80	0080	Oper Activities Inc Decr Per 7	1
81	0081	Oper Activities Inc Decr Per 8	1
82	0082	Oper Activities Inc Decr Per 9	1
83	0083	Oper Activities Inc Decr Per 10	1
84	0084	Oper Activities Inc Decr Per 11	1
85	0085	Oper Activities Inc Decr Per 12	1

NexPreAddInsEdDel

Where is that tag !

Select from Tag List

Search for Tag Number

Search for Tag Name

Current Tag Focus: -

Row68

Tag #0068

NameInventory dec Incr Per 7

Open the Tag Macro

Slide notes

Slide 30 - Slide 30

IES Client v8.29 : My IES

Help Submit Quit Functions Commands

1 Console2 Pre Run3 The Tags4 Options

Tag Result Macros: -

>>>	Tags	Value Names	Exec It
61	0061	AP Movement inc Decr Per 12	1
62	0062	Inventory dec Incr Per 1	1
63	0063	Inventory dec Incr Per 2	1
64	0064	Inventory dec Incr Per 3	1
65	0065	Inventory dec Incr Per 4	1
66	0066	Inventory dec Incr Per 5	1
67	0067	Inventory dec Incr Per 6	1
68	0068	Inventory dec Incr Per 7	1
69	0069	Inventory dec Incr Per 8	1
70	0070	Inventory dec Incr Per 9	1
71	0071	Inventory dec Incr Per 10	1
72	0072	Inventory dec Incr Per 11	1
73	0073	Inventory dec Incr Per 12	1
74	0074	Oper Activities Inc Decr Per 1	1
75	0075	Oper Activities Inc Decr Per 2	1
76	0076	Oper Activities Inc Decr Per 3	1
77	0077	Oper Activities Inc Decr Per 4	1
78	0078	Oper Activities Inc Decr Per 5	1
79	0079	Oper Activities Inc Decr Per 6	1
80	0080	Oper Activities Inc Decr Per 7	1
81	0081	Oper Activities Inc Decr Per 8	1
82	0082	Oper Activities Inc Decr Per 9	1
83	0083	Oper Activities Inc Decr Per 10	1
84	0084	Oper Activities Inc Decr Per 11	1
85	0085	Oper Activities Inc Decr Per 12	1

NexPreAddInsEdDel

Where is that tag !

Select from Tag List

Search for Tag Number

Search for Tag Name

Current Tag Focus: -

Row68

Tag #0068

NameInventory dec Incr Per 7

Open the Tag Macro

Slide notes

Slide 31 - Slide 31

IES Client v8.29 : My IES

Help Submit Quit Functions Commands

1 Console2 Pre Run3 The Tags4 Options

Tag Result Macros: -

>>>	Tags	Value Names	Exec It
61	0061	AP Movement inc Decr Per 12	1
62	0062	Inventory dec Incr Per 1	1
63	0063	Inventory dec Incr Per 2	1
64	0064	Inventory dec Incr Per 3	1
65	0065	Inventory dec Incr Per 4	1
66	0066	Inventory dec Incr Per 5	1
67	0067	Inventory dec Incr Per 6	1
68	0068	Inventory dec Incr Per 7	1
69	0069	Inventory dec Incr Per 8	1
70	0070	Inventory dec Incr Per 9	1
71	0071	Inventory dec Incr Per 10	1
72	0072	Inventory dec Incr Per 11	1
73	0073	Inventory dec Incr Per 12	1
74	0074	Oper Activities Inc Decr Per 1	1
75	0075	Oper Activities Inc Decr Per 2	1
76	0076	Oper Activities Inc Decr Per 3	1
77	0077	Oper Activities Inc Decr Per 4	1
78	0078	Oper Activities Inc Decr Per 5	1
79	0079	Oper Activities Inc Decr Per 6	1
80	0080	Oper Activities Inc Decr Per 7	1
81	0081	Oper Activities Inc Decr Per 8	1
82	0082	Oper Activities Inc Decr Per 9	1
83	0083	Oper Activities Inc Decr Per 10	1
84	0084	Oper Activities Inc Decr Per 11	1
85	0085	Oper Activities Inc Decr Per 12	1

NexPreAddInsEdDel

Where is that tag !

[Select from Tag List](#)

[Search for Tag Number](#)

[Search for Tag Name](#)

Current Tag Focus: -

Row68

Tag #0068

NameInventory dec Incr Per 7

[Open the Tag Macro](#)

Slide notes