

## Slide 1 - Slide 1

IES Client v8.29 : My IES

Help Submit Quit Functions Commands

1 Console 2 Pre Run 3 The Tags 4 Options

Tag Result Macros: -

>>> Tags	Value Names	Exec It
1 0001	Year	1
2 0002	Cash at Bank Per 1	2
3 0003	Cash at Bank Per 2	2
4 0004	Cash at Bank Per 3	2
5 0005	Cash at Bank Per 4	2
6 0006	Cash at Bank Per 5	2
7 0007	Cash at Bank Per 6	2
8 0008	Cash at Bank Per 7	2
9 0009	Cash at Bank Per 8	2
10 0010	Cash at Bank Per 9	2
11 0011	Cash at Bank Per 10	2
12 0012	Cash at Bank Per 11	2
13 0013	Cash at Bank Per 12	2
14 0014	Net Income Per 1	1
15 0015	Net Income Per 2	1
16 0016	Net Income Per 3	1
17 0017	Net Income Per 4	1
18 0018	Net Income Per 5	1
19 0019	Net Income Per 6	1
20 0020	Net Income Per 7	1
21 0021	Net Income Per 8	1
22 0022	Net Income Per 9	1
23 0023	Net Income Per 10	1
24 0024	Net Income Per 11	1
25 0025	Net Income Per 12	1

Where is that tag !

[Select from Tag List](#)

[Search for Tag Number](#)

[Search for Tag Name](#)

Current Tag Focus: -

Row: 1

Tag #: 0001

Name: Year

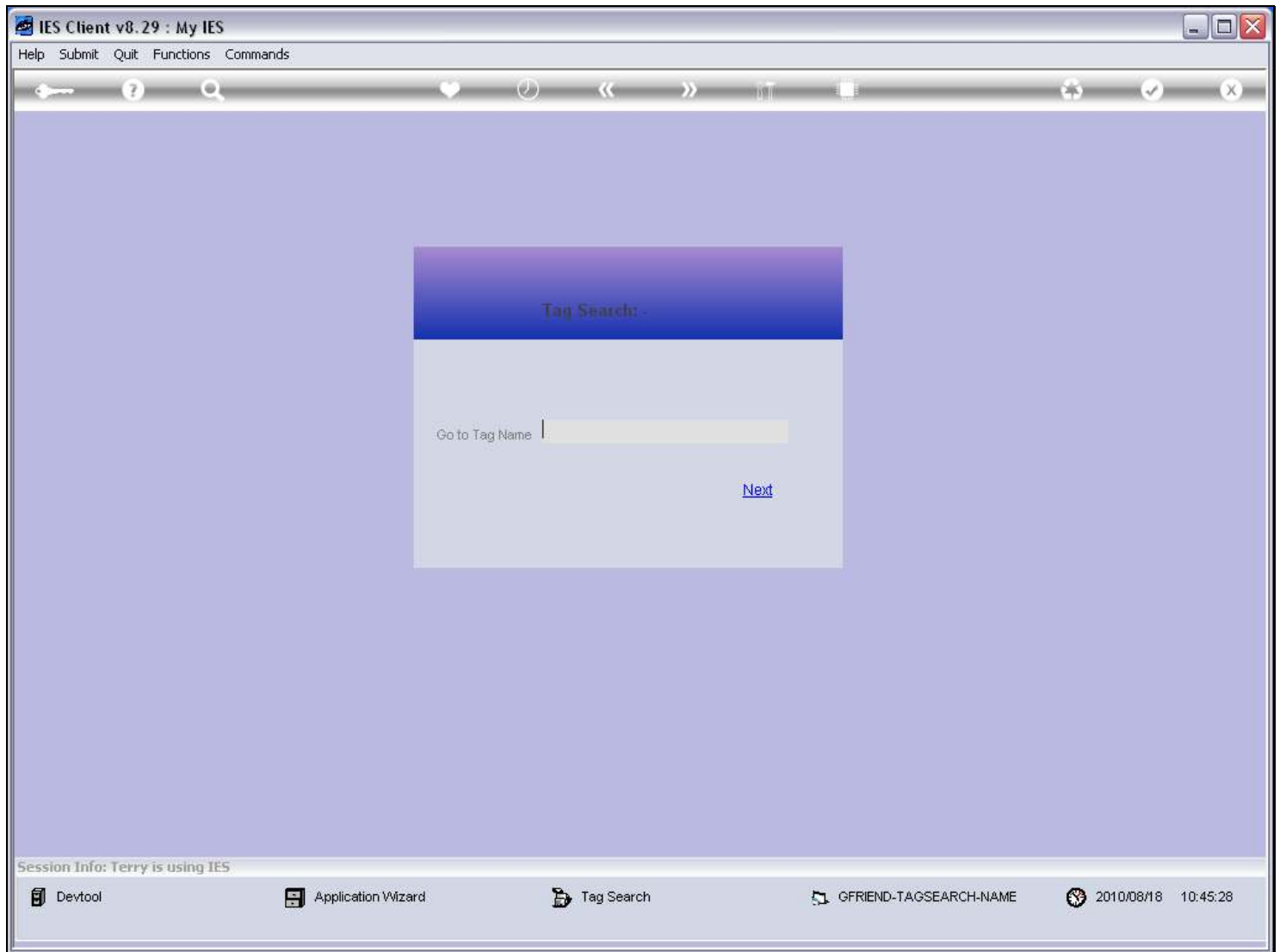
[Open the Tag Macro](#)

Nex Pre Add Ins Ed Del

## Slide notes

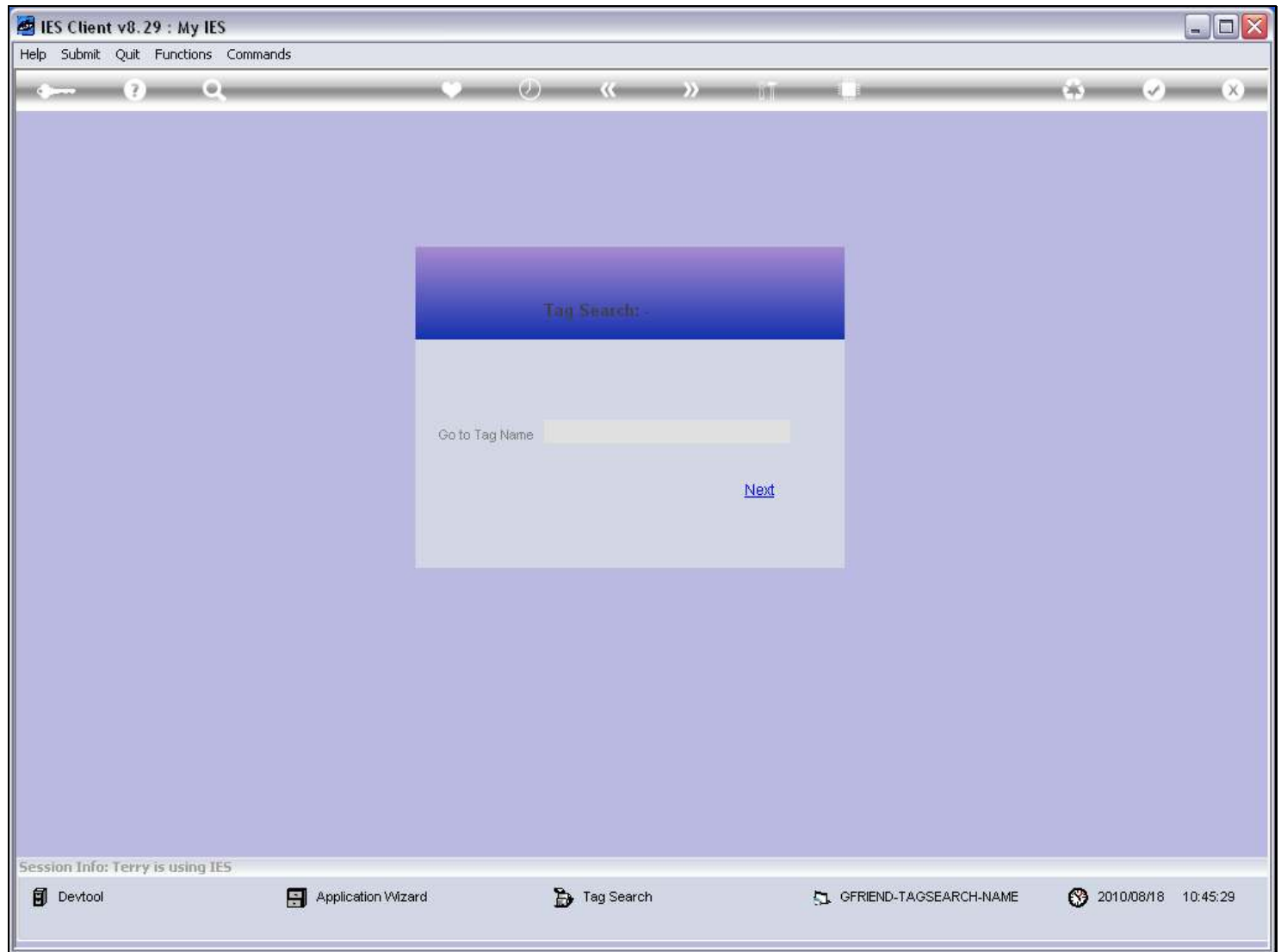
Whenever we enter a Tag, or select a Tag with one of the location methods, then that Tag is said to get the Tag focus.

## Slide 2 - Slide 2



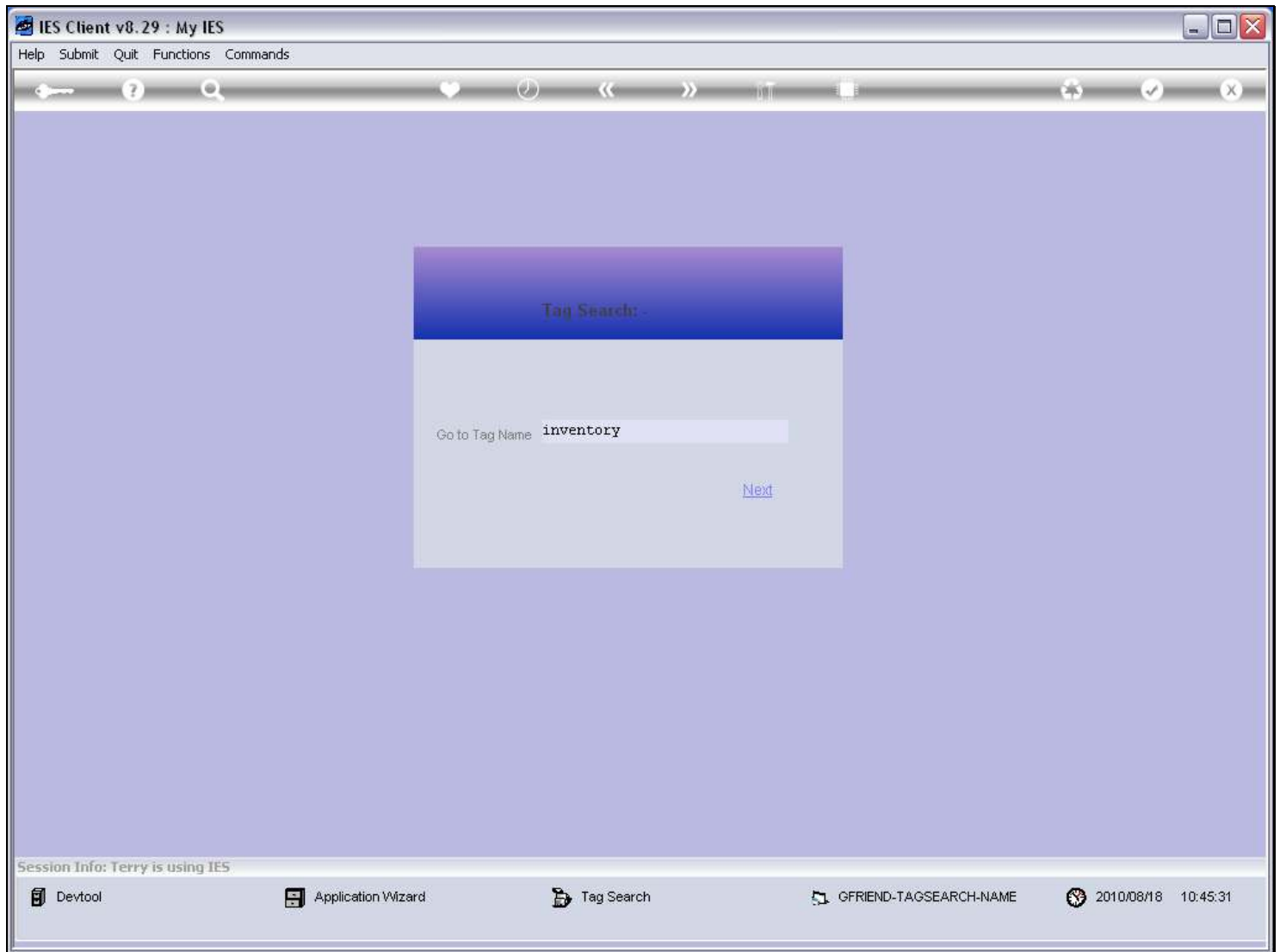
## Slide notes

## Slide 3 - Slide 3



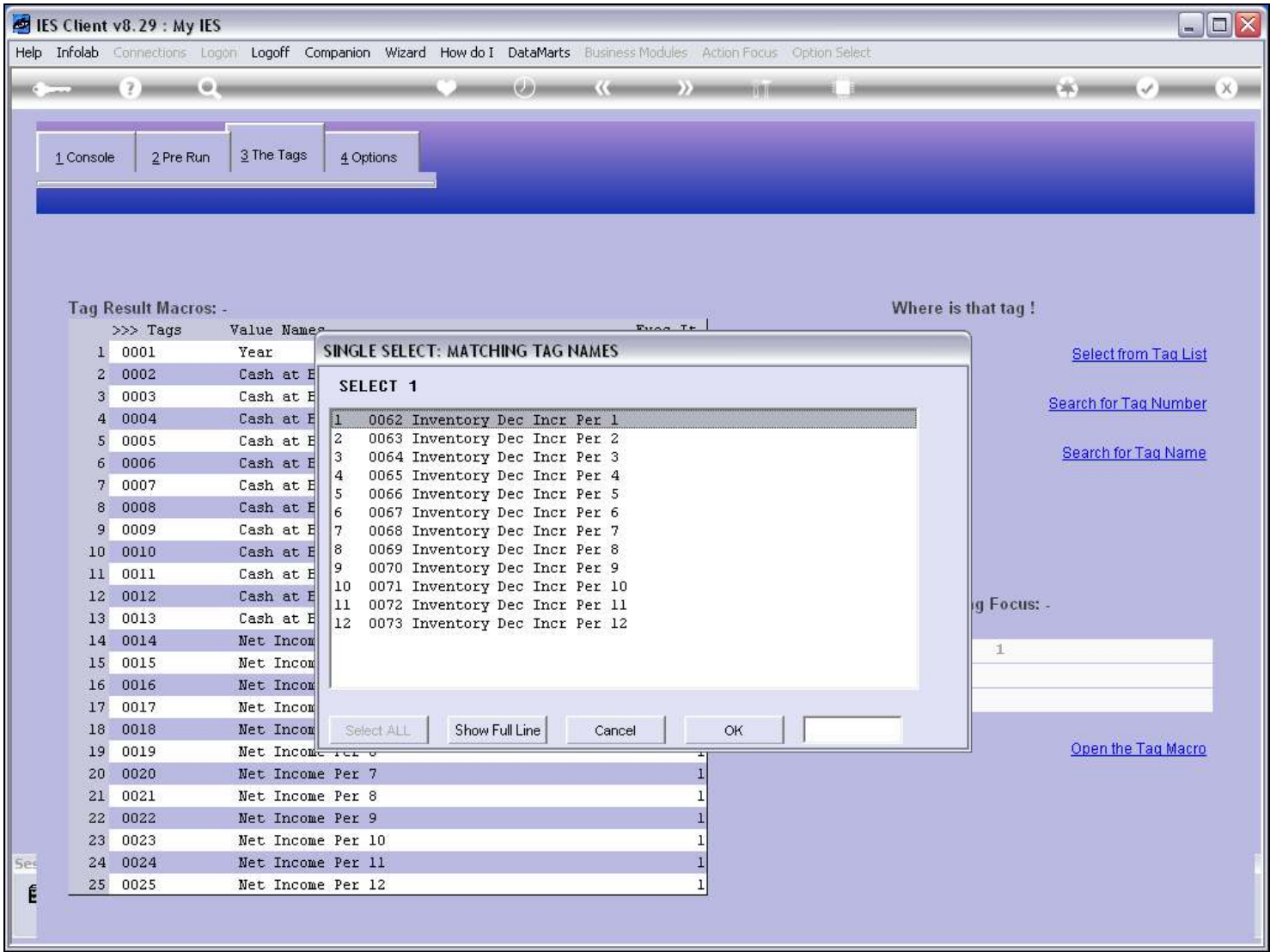
## Slide notes

## Slide 4 - Slide 4



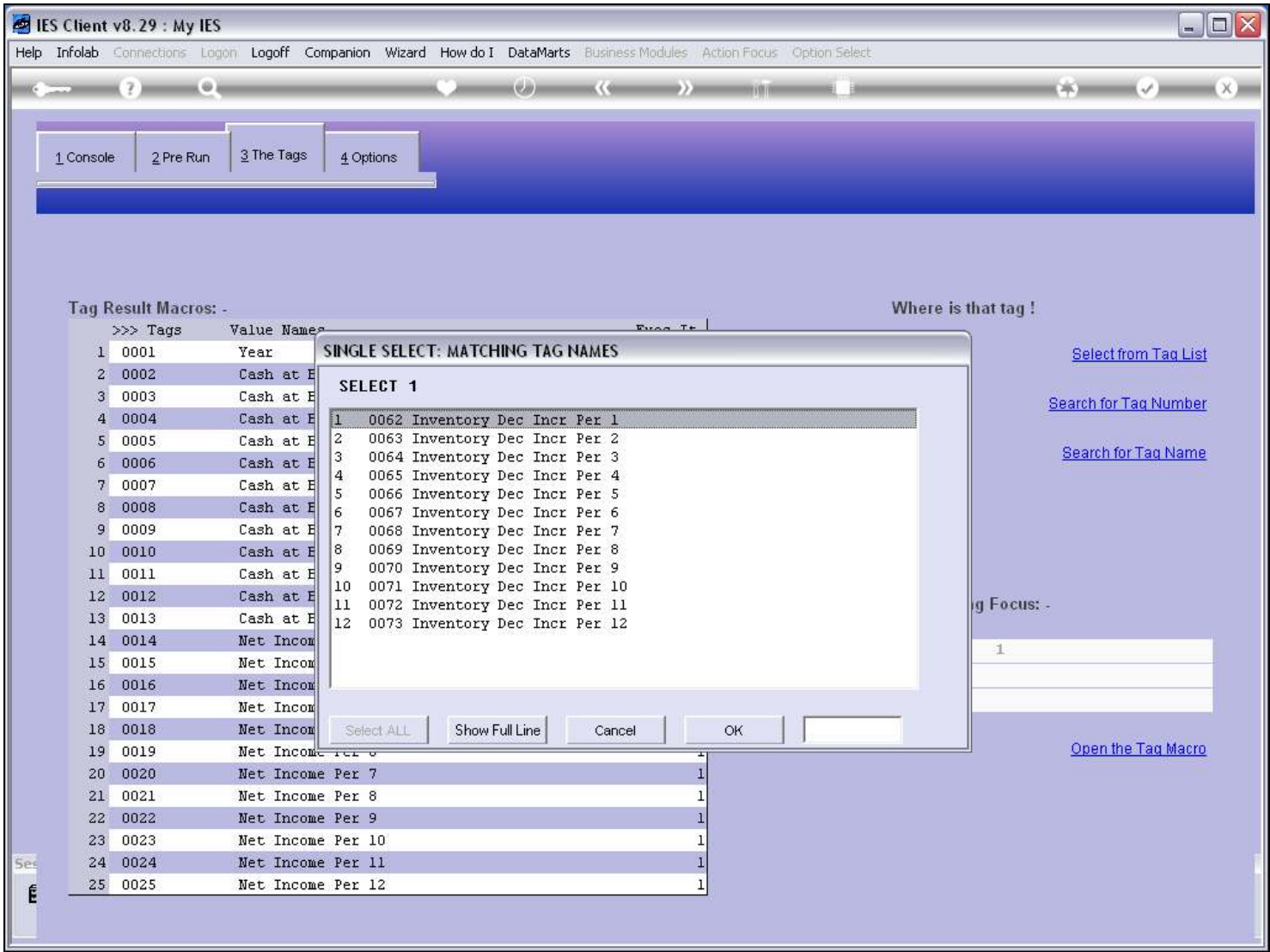
## Slide notes

Slide 5 - Slide 5



Slide notes

Slide 6 - Slide 6



Slide notes

## Slide 7 - Slide 7

IES Client v8.29 : My IES

Help Submit Quit Functions Commands

1 Console 2 Pre Run 3 The Tags 4 Options

Tag Result Macros :-

>>> Tags	Value Names	Exec It
61 0061	AP Movement inc Decr Per 12	1
62 0062	Inventory dec Incr Per 1	1
63 0063	Inventory dec Incr Per 2	1
64 0064	Inventory dec Incr Per 3	1
65 0065	Inventory dec Incr Per 4	1
66 0066	Inventory dec Incr Per 5	1
67 0067	Inventory dec Incr Per 6	1
68 0068	Inventory dec Incr Per 7	1
69 0069	Inventory dec Incr Per 8	1
70 0070	Inventory dec Incr Per 9	1
71 0071	Inventory dec Incr Per 10	1
72 0072	Inventory dec Incr Per 11	1
73 0073	Inventory dec Incr Per 12	1
74 0074	Oper Activities Inc Decr Per 1	1
75 0075	Oper Activities Inc Decr Per 2	1
76 0076	Oper Activities Inc Decr Per 3	1
77 0077	Oper Activities Inc Decr Per 4	1
78 0078	Oper Activities Inc Decr Per 5	1
79 0079	Oper Activities Inc Decr Per 6	1
80 0080	Oper Activities Inc Decr Per 7	1
81 0081	Oper Activities Inc Decr Per 8	1
82 0082	Oper Activities Inc Decr Per 9	1
83 0083	Oper Activities Inc Decr Per 10	1
84 0084	Oper Activities Inc Decr Per 11	1
85 0085	Oper Activities Inc Decr Per 12	1

Where is that tag !

[Select from Tag List](#)

[Search for Tag Number](#)

[Search for Tag Name](#)

Current Tag Focus :-

Row	67
Tag #	0067
Name	Inventory dec Incr Per 6

[Open the Tag Macro](#)

Nex Pre Add Ins Ed Del

## Slide notes

Now that we have selected Tag 67, it will appear on the Tag page to the left, and on the right it is shown to have the Tag focus.



Slide 8 - Slide 8

IES Client v8.29 : My IES

Help Submit Quit Functions Commands

1 Console2 Pre Run3 The Tags4 Options

Tag Result Macros: -

	>>> Tags	Value Names	Exec It
61	0061	AP Movement inc Decr Per 12	1
62	0062	Inventory dec Incr Per 1	1
63	0063	Inventory dec Incr Per 2	1
64	0064	Inventory dec Incr Per 3	1
65	0065	Inventory dec Incr Per 4	1
66	0066	Inventory dec Incr Per 5	1
67	0067	Inventory dec Incr Per 6	1
68	0068	Inventory dec Incr Per 7	1
69	0069	Inventory dec Incr Per 8	1
70	0070	Inventory dec Incr Per 9	1
71	0071	Inventory dec Incr Per 10	1
72	0072	Inventory dec Incr Per 11	1
73	0073	Inventory dec Incr Per 12	1
74	0074	Oper Activities Inc Decr Per 1	1
75	0075	Oper Activities Inc Decr Per 2	1
76	0076	Oper Activities Inc Decr Per 3	1
77	0077	Oper Activities Inc Decr Per 4	1
78	0078	Oper Activities Inc Decr Per 5	1
79	0079	Oper Activities Inc Decr Per 6	1
80	0080	Oper Activities Inc Decr Per 7	1
81	0081	Oper Activities Inc Decr Per 8	1
82	0082	Oper Activities Inc Decr Per 9	1
83	0083	Oper Activities Inc Decr Per 10	1
84	0084	Oper Activities Inc Decr Per 11	1
85	0085	Oper Activities Inc Decr Per 12	1

NexPreAddInsEdDel

Where is that tag !

Select from Tag List

Search for Tag Number

Search for Tag Name

Current Tag Focus: -

Row67

Tag #0067

NameInventory dec Incr Per 6

Open the Tag Macro

Slide notes



## Slide 9 - Slide 9

IES Client v8.29 : My IES

Help Submit Quit Functions Commands

1 Console 2 Pre Run 3 The Tags 4 Options

Tag Result Macros :-

	>>> Tags	Value Names	Exec It
61	0061	AP Movement inc Decr Per 12	1
62	0062	Inventory dec Incr Per 1	1
63	0063	Inventory dec Incr Per 2	1
64	0064	Inventory dec Incr Per 3	1
65	0065	Inventory dec Incr Per 4	1
66	0066	Inventory dec Incr Per 5	1
67	0067	Inventory dec Incr Per 6	1
68	0068	Inventory dec Incr Per 7	1
69	0069	Inventory dec Incr Per 8	1
70	0070	Inventory dec Incr Per 9	1
71	0071	Inventory dec Incr Per 10	1
72	0072	Inventory dec Incr Per 11	1
73	0073	Inventory dec Incr Per 12	1
74	0074	Oper Activities Inc Decr Per 1	1
75	0075	Oper Activities Inc Decr Per 2	1
76	0076	Oper Activities Inc Decr Per 3	1
77	0077	Oper Activities Inc Decr Per 4	1
78	0078	Oper Activities Inc Decr Per 5	1
79	0079	Oper Activities Inc Decr Per 6	1
80	0080	Oper Activities Inc Decr Per 7	1
81	0081	Oper Activities Inc Decr Per 8	1
82	0082	Oper Activities Inc Decr Per 9	1
83	0083	Oper Activities Inc Decr Per 10	1
84	0084	Oper Activities Inc Decr Per 11	1
85	0085	Oper Activities Inc Decr Per 12	1

Where is that tag !

[Select from Tag List](#)

[Search for Tag Number](#)

[Search for Tag Name](#)

Current Tag Focus: -

Row	67
Tag #	0067
Name	Inventory dec Incr Per 6

[Open the Tag Macro](#)

Nex Pre Add Ins Ed Del

## Slide notes

We can always enter a Tag Macro or Template by dbl-clicking on it.

## Slide 10 - Slide 10

IES Client v8.29 : My IES

Help Submit Quit Functions Commands

TEMPLATE 002: GL Numeric - Single Rule

Tag # 0067

Name Inventory dec Incr Per 6

Name # 1 (Mandatory) L:act-ccur LEDGER: Cr Movem Current

Name # 2 (Optional) L:act-dcur LEDGER: Dt Movem Current

Names Operation 4: add

Acct Selection Basis OTHERPOS GROUPS & CATGS POSITION

Flag Value to Select H1H1

Sub Acct Lock

Tag Addressing relative

Period Mapping 9: Current Year, Month 6

Forex Exchange Rate 1: not used

Financial Scaling 1: no scaling

Rounding for Numbers 1: do not apply rounding

Display Mask MR02,1

Alignment r: right justified

Result Width 21

Bold ? NORMAL

Underline ? NORMAL

☐ Sign Convert ? (+/-)

Tag Result ALWAYS RETURN A RESULT

Operator =

Conditional Value

[Copy Template](#)

[Remove Template](#)

[Reveal Logic](#)

[Save](#)

Session Info: Terry is using IES

Devtool Application Wizard Tag: Business Template BGFRIEND-TAG-TEMPLATE1 2010/08/18 10:45:43

## Slide notes

## Slide 11 - Slide 11

IES Client v8.29 : My IES

Help Submit Quit Functions Commands

TEMPLATE 002: GL Numeric - Single Rule

Tag # 0067

Name Inventory dec Incr Per 6

Name # 1 (Mandatory) L:act-ccur LEDGER: Cr Movem Current

Name # 2 (Optional) L:act-dcur LEDGER: Dt Movem Current

Names Operation 4: add

Acct Selection Basis OTHERPOS GROUPS & CATGS POSITION

Flag Value to Select H1H1

Sub Acct Lock

Tag Addressing relative

Period Mapping 9: Current Year, Month 6

Forex Exchange Rate 1: not used

Financial Scaling 1: no scaling

Rounding for Numbers 1: do not apply rounding

Display Mask MR02,1

Alignment r: right justified

Result Width 21

Bold ? NORMAL

Underline ? NORMAL

☐ Sign Convert ? (+/-)

Tag Result ALWAYS RETURN A RESULT

Operator =

Conditional Value

[Copy Template](#)

[Remove Template](#)

[Reveal Logic](#)

[Save](#)

Session Info: Terry is using IES

Devtool Application Wizard Tag: Business Template BGFRIEND-TAG-TEMPLATE1 2010/08/18 10:45:43

## Slide notes

## Slide 12 - Slide 12

IES Client v8.29 : My IES

Help Submit Quit Functions Commands

1 Console 2 Pre Run 3 The Tags 4 Options

Tag Result Macros: -

	>>> Tags	Value Names	Exec It
61	0061	AP Movement inc Decr Per 12	1
62	0062	Inventory dec Incr Per 1	1
63	0063	Inventory dec Incr Per 2	1
64	0064	Inventory dec Incr Per 3	1
65	0065	Inventory dec Incr Per 4	1
66	0066	Inventory dec Incr Per 5	1
67	0067	Inventory dec Incr Per 6	1
68	0068	Inventory dec Incr Per 7	1
69	0069	Inventory dec Incr Per 8	1
70	0070	Inventory dec Incr Per 9	1
71	0071	Inventory dec Incr Per 10	1
72	0072	Inventory dec Incr Per 11	1
73	0073	Inventory dec Incr Per 12	1
74	0074	Oper Activities Inc Decr Per 1	1
75	0075	Oper Activities Inc Decr Per 2	1
76	0076	Oper Activities Inc Decr Per 3	1
77	0077	Oper Activities Inc Decr Per 4	1
78	0078	Oper Activities Inc Decr Per 5	1
79	0079	Oper Activities Inc Decr Per 6	1
80	0080	Oper Activities Inc Decr Per 7	1
81	0081	Oper Activities Inc Decr Per 8	1
82	0082	Oper Activities Inc Decr Per 9	1
83	0083	Oper Activities Inc Decr Per 10	1
84	0084	Oper Activities Inc Decr Per 11	1
85	0085	Oper Activities Inc Decr Per 12	1

Where is that tag !

[Select from Tag List](#)

[Search for Tag Number](#)

[Search for Tag Name](#)

Current Tag Focus: -

Row	67
Tag #	0067
Name	Inventory dec Incr Per 6

[Open the Tag Macro](#)

Nex Pre Add Ins Ed Del

## Slide notes

## Slide 13 - Slide 13

IES Client v8.29 : My IES

Help Submit Quit Functions Commands

1 Console 2 Pre Run 3 The Tags 4 Options

Tag Result Macros :-

>>> Tags	Value Names	Exec It
61 0061	AP Movement inc Decr Per 12	1
62 0062	Inventory dec Incr Per 1	1
63 0063	Inventory dec Incr Per 2	1
64 0064	Inventory dec Incr Per 3	1
65 0065	Inventory dec Incr Per 4	1
66 0066	Inventory dec Incr Per 5	1
67 0067	Inventory dec Incr Per 6	1
68 0068	Inventory dec Incr Per 7	1
69 0069	Inventory dec Incr Per 8	1
70 0070	Inventory dec Incr Per 9	1
71 0071	Inventory dec Incr Per 10	1
72 0072	Inventory dec Incr Per 11	1
73 0073	Inventory dec Incr Per 12	1
74 0074	Oper Activities Inc Decr Per 1	1
75 0075	Oper Activities Inc Decr Per 2	1
76 0076	Oper Activities Inc Decr Per 3	1
77 0077	Oper Activities Inc Decr Per 4	1
78 0078	Oper Activities Inc Decr Per 5	1
79 0079	Oper Activities Inc Decr Per 6	1
80 0080	Oper Activities Inc Decr Per 7	1
81 0081	Oper Activities Inc Decr Per 8	1
82 0082	Oper Activities Inc Decr Per 9	1
83 0083	Oper Activities Inc Decr Per 10	1
84 0084	Oper Activities Inc Decr Per 11	1
85 0085	Oper Activities Inc Decr Per 12	1

Where is that tag !

[Select from Tag List](#)

[Search for Tag Number](#)

[Search for Tag Name](#)

Current Tag Focus: -

Row	67
Tag #	0067
Name	Inventory dec Incr Per 6

[Open the Tag Macro](#)

Nex Pre Add Ins Ed Del

## Slide notes

But we can also just use 'Open Tag Macro' for a Tag that has focus.



## Slide 14 - Slide 14

IES Client v8.29 : My IES

Help Submit Quit Functions Commands

1 Console 2 Pre Run 3 The Tags 4 Options

Tag Result Macros: -

	>>> Tags	Value Names	Exec It
61	0061	AP Movement inc Decr Per 12	1
62	0062	Inventory dec Incr Per 1	1
63	0063	Inventory dec Incr Per 2	1
64	0064	Inventory dec Incr Per 3	1
65	0065	Inventory dec Incr Per 4	1
66	0066	Inventory dec Incr Per 5	1
67	0067	Inventory dec Incr Per 6	1
68	0068	Inventory dec Incr Per 7	1
69	0069	Inventory dec Incr Per 8	1
70	0070	Inventory dec Incr Per 9	1
71	0071	Inventory dec Incr Per 10	1
72	0072	Inventory dec Incr Per 11	1
73	0073	Inventory dec Incr Per 12	1
74	0074	Oper Activities Inc Decr Per 1	1
75	0075	Oper Activities Inc Decr Per 2	1
76	0076	Oper Activities Inc Decr Per 3	1
77	0077	Oper Activities Inc Decr Per 4	1
78	0078	Oper Activities Inc Decr Per 5	1
79	0079	Oper Activities Inc Decr Per 6	1
80	0080	Oper Activities Inc Decr Per 7	1
81	0081	Oper Activities Inc Decr Per 8	1
82	0082	Oper Activities Inc Decr Per 9	1
83	0083	Oper Activities Inc Decr Per 10	1
84	0084	Oper Activities Inc Decr Per 11	1
85	0085	Oper Activities Inc Decr Per 12	1

Where is that tag !

[Select from Tag List](#)

[Search for Tag Number](#)

[Search for Tag Name](#)

Current Tag Focus: -

Row	67
Tag #	0067
Name	Inventory dec Incr Per 6

[Open the Tag Macro](#)

Nex Pre Add Ins Ed Del

## Slide notes

## Slide 15 - Slide 15

IES Client v8.29 : My IES

Help Submit Quit Functions Commands

TEMPLATE 002: GL Numeric - Single Rule

Tag # 0067

Name Inventory dec Incr Per 6

Name # 1 (Mandatory) L:act-ccur LEDGER: Cr Movem Current

Name # 2 (Optional) L:act-dcur LEDGER: Dt Movem Current

Names Operation 4: add

Acct Selection Basis OTHERPOS GROUPS & CATGS POSITION

Flag Value to Select H1H1

Sub Acct Lock

Tag Addressing relative

Period Mapping 9: Current Year, Month 6

Forex Exchange Rate 1: not used

Financial Scaling 1: no scaling

Rounding for Numbers 1: do not apply rounding

Display Mask MR02,1

Alignment r: right justified

Result Width 21

Bold ? NORMAL

Underline ? NORMAL

☐ Sign Convert ? (+/-)

Tag Result ALWAYS RETURN A RESULT

Operator =

Conditional Value

[Copy Template](#)

[Remove Template](#)

[Reveal Logic](#)

[Save](#)

Session Info: Terry is using IES

Devtool Application Wizard Tag: Business Template BGFRIEND-TAG-TEMPLATE1 2010/08/18 10:45:50

## Slide notes



## Slide 16 - Slide 16

IES Client v8.29 : My IES

Help Submit Quit Functions Commands

TEMPLATE 002: GL Numeric - Single Rule

Tag # 0067

Name Inventory dec Incr Per 6

Name # 1 (Mandatory) L:act-ccur LEDGER: Cr Movem Current

Name # 2 (Optional) L:act-dcur LEDGER: Dt Movem Current

Names Operation 4: add

Acct Selection Basis OTHERIP05 GROUPS & CATGS POSITION

Flag Value to Select H1H1

Sub Acct Lock

Tag Addressing relative

Period Mapping 9: Current Year, Month 6

Forex Exchange Rate 1: not used

Financial Scaling 1: no scaling

Rounding for Numbers 1: do not apply rounding

Display Mask MR02,1

Alignment r: right justified

Result Width 21

Bold ? NORMAL

Underline ? NORMAL

☐ Sign Convert ? (+/-)

Tag Result ALWAYS RETURN A RESULT

Operator =

Conditional Value

[Copy Template](#)

[Remove Template](#)

[Reveal Logic](#)

[Save](#)

Session Info: Terry is using IES

Devtool Application Wizard Tag: Business Template BGFRIEND-TAG-TEMPLATE1 2010/08/18 10:45:50

## Slide notes

Slide 17 - Slide 17

IES Client v8.29 : My IES

Help Submit Quit Functions Commands

1 Console2 Pre Run3 The Tags4 Options

Tag Result Macros: -

	>>> Tags	Value Names	Exec It
61	0061	AP Movement inc Decr Per 12	1
62	0062	Inventory dec Incr Per 1	1
63	0063	Inventory dec Incr Per 2	1
64	0064	Inventory dec Incr Per 3	1
65	0065	Inventory dec Incr Per 4	1
66	0066	Inventory dec Incr Per 5	1
67	0067	Inventory dec Incr Per 6	1
68	0068	Inventory dec Incr Per 7	1
69	0069	Inventory dec Incr Per 8	1
70	0070	Inventory dec Incr Per 9	1
71	0071	Inventory dec Incr Per 10	1
72	0072	Inventory dec Incr Per 11	1
73	0073	Inventory dec Incr Per 12	1
74	0074	Oper Activities Inc Decr Per 1	1
75	0075	Oper Activities Inc Decr Per 2	1
76	0076	Oper Activities Inc Decr Per 3	1
77	0077	Oper Activities Inc Decr Per 4	1
78	0078	Oper Activities Inc Decr Per 5	1
79	0079	Oper Activities Inc Decr Per 6	1
80	0080	Oper Activities Inc Decr Per 7	1
81	0081	Oper Activities Inc Decr Per 8	1
82	0082	Oper Activities Inc Decr Per 9	1
83	0083	Oper Activities Inc Decr Per 10	1
84	0084	Oper Activities Inc Decr Per 11	1
85	0085	Oper Activities Inc Decr Per 12	1

NexPreAddInsEdDel

Where is that tag !

Select from Tag List

Search for Tag Number

Search for Tag Name

Current Tag Focus: -

Row67

Tag #0067

NameInventory dec Incr Per 6

Open the Tag Macro

Slide notes

## Slide 18 - Slide 18

IES Client v8.29 : My IES

Help Submit Quit Functions Commands

1 Console 2 Pre Run 3 The Tags 4 Options

Tag Result Macros: -

	>>> Tags	Value Names	Exec It
61	0061	AP Movement inc Decr Per 12	1
62	0062	Inventory dec Incr Per 1	1
63	0063	Inventory dec Incr Per 2	1
64	0064	Inventory dec Incr Per 3	1
65	0065	Inventory dec Incr Per 4	1
66	0066	Inventory dec Incr Per 5	1
67	0067	Inventory dec Incr Per 6	1
68	0068	Inventory dec Incr Per 7	1
69	0069	Inventory dec Incr Per 8	1
70	0070	Inventory dec Incr Per 9	1
71	0071	Inventory dec Incr Per 10	1
72	0072	Inventory dec Incr Per 11	1
73	0073	Inventory dec Incr Per 12	1
74	0074	Oper Activities Inc Decr Per 1	1
75	0075	Oper Activities Inc Decr Per 2	1
76	0076	Oper Activities Inc Decr Per 3	1
77	0077	Oper Activities Inc Decr Per 4	1
78	0078	Oper Activities Inc Decr Per 5	1
79	0079	Oper Activities Inc Decr Per 6	1
80	0080	Oper Activities Inc Decr Per 7	1
81	0081	Oper Activities Inc Decr Per 8	1
82	0082	Oper Activities Inc Decr Per 9	1
83	0083	Oper Activities Inc Decr Per 10	1
84	0084	Oper Activities Inc Decr Per 11	1
85	0085	Oper Activities Inc Decr Per 12	1

Where is that tag !

[Select from Tag List](#)

[Search for Tag Number](#)

[Search for Tag Name](#)

Current Tag Focus: -

Row	67
Tag #	0067
Name	Inventory dec Incr Per 6

[Open the Tag Macro](#)

Nex Pre Add Ins Ed Del

## Slide notes