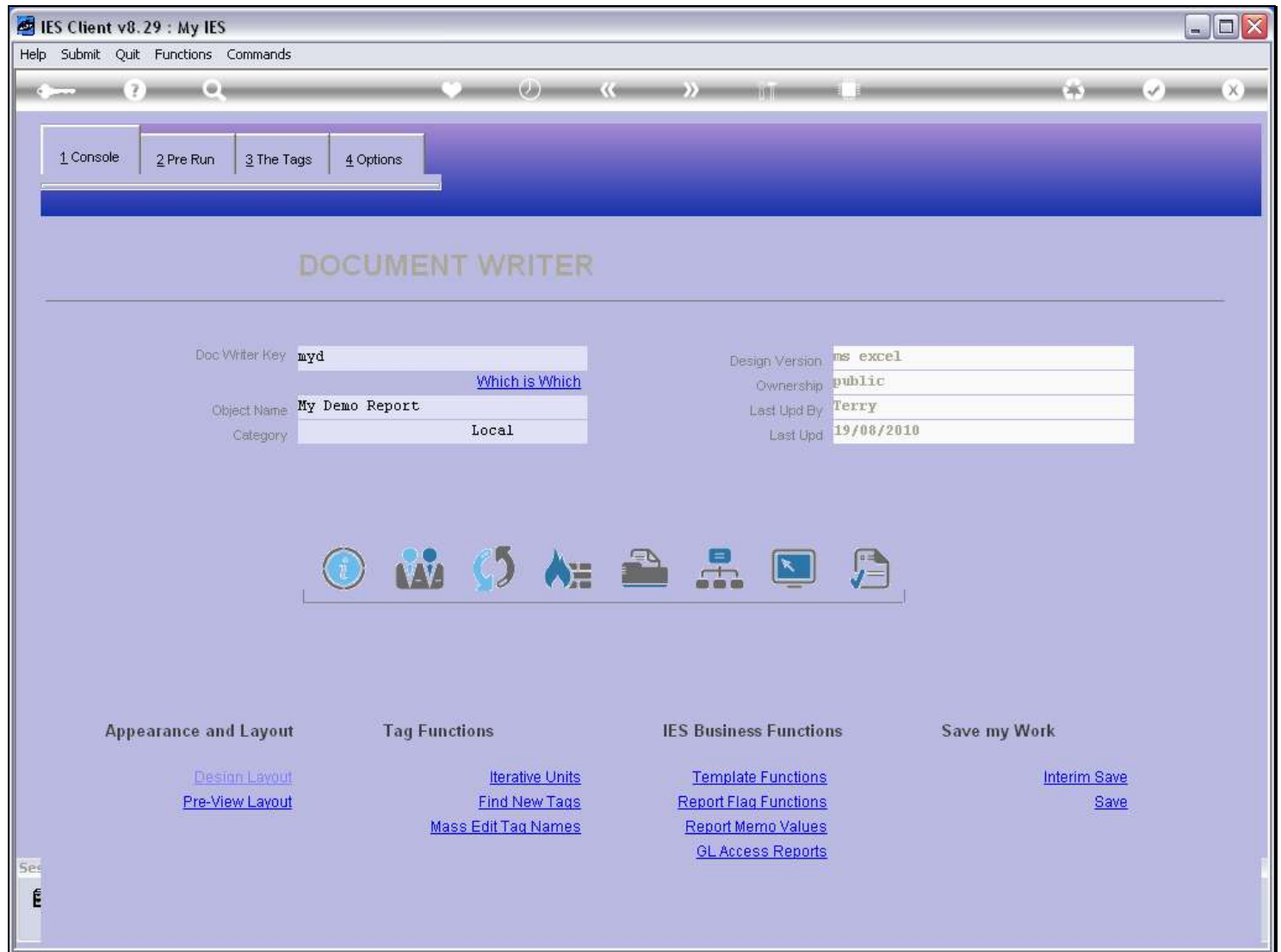


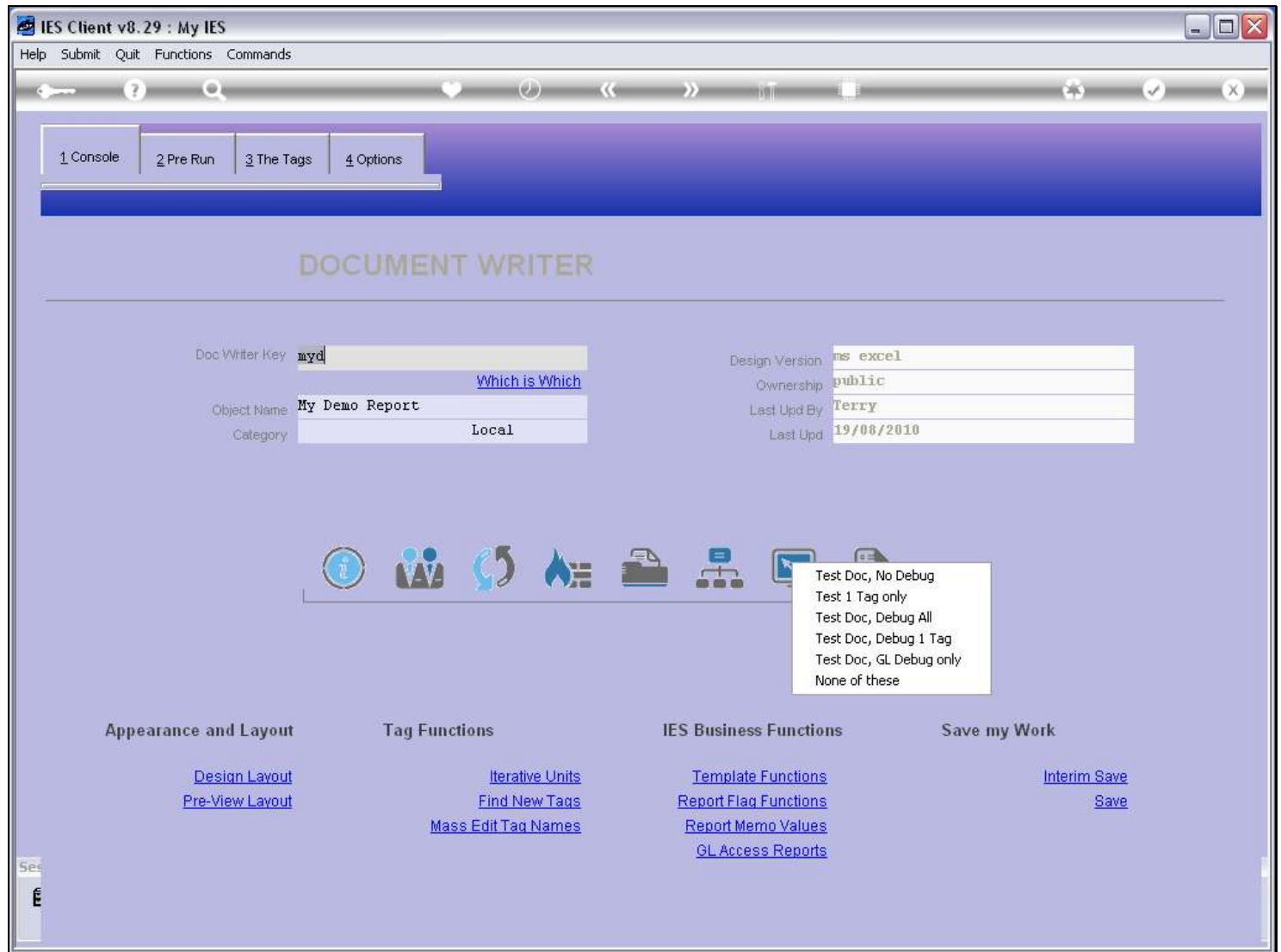
Slide 1 - Slide 1



Slide notes

Testing of our Report can be done from the console Test function, and there are a number of test options available.

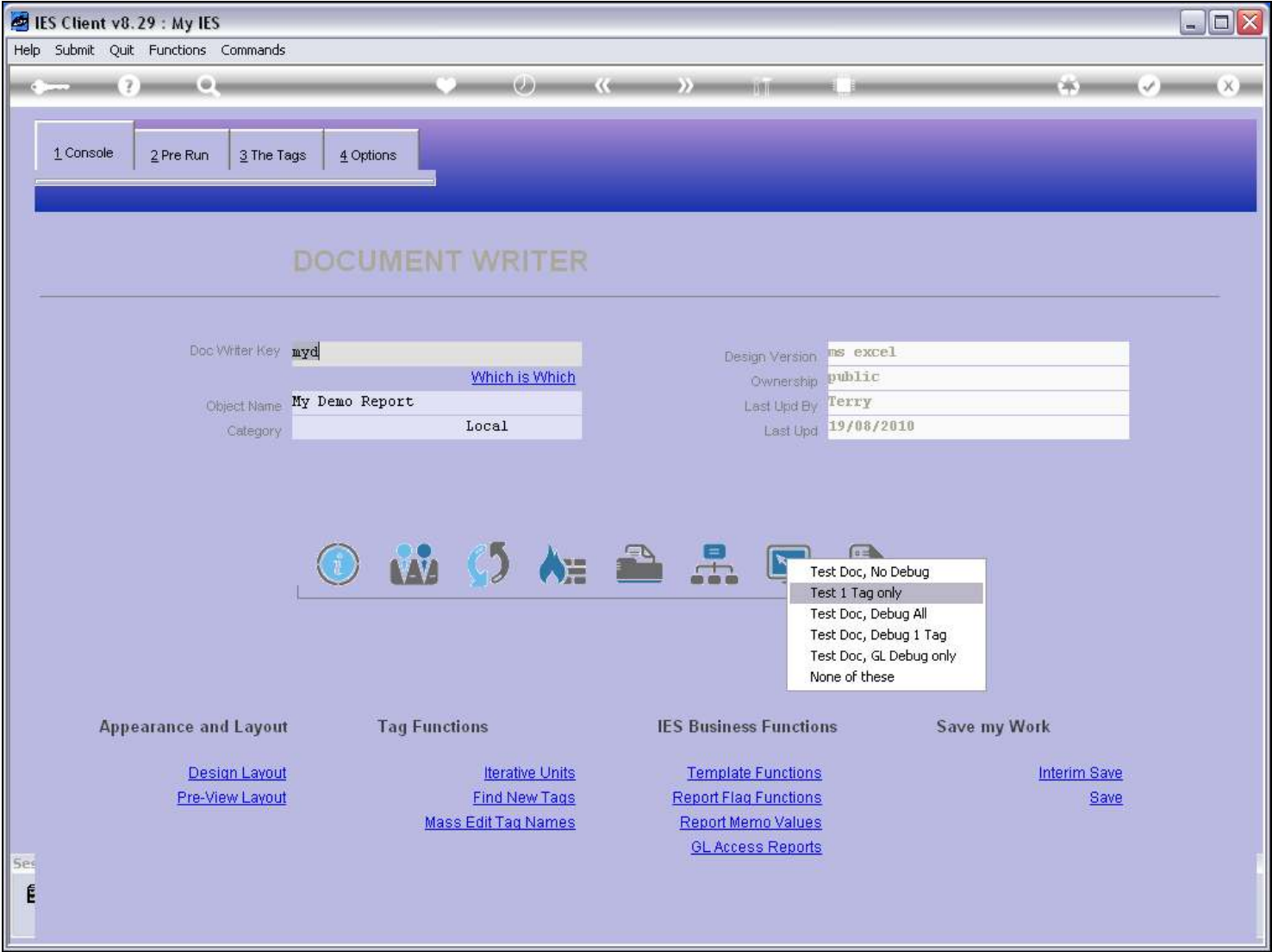
Slide 2 - Slide 2



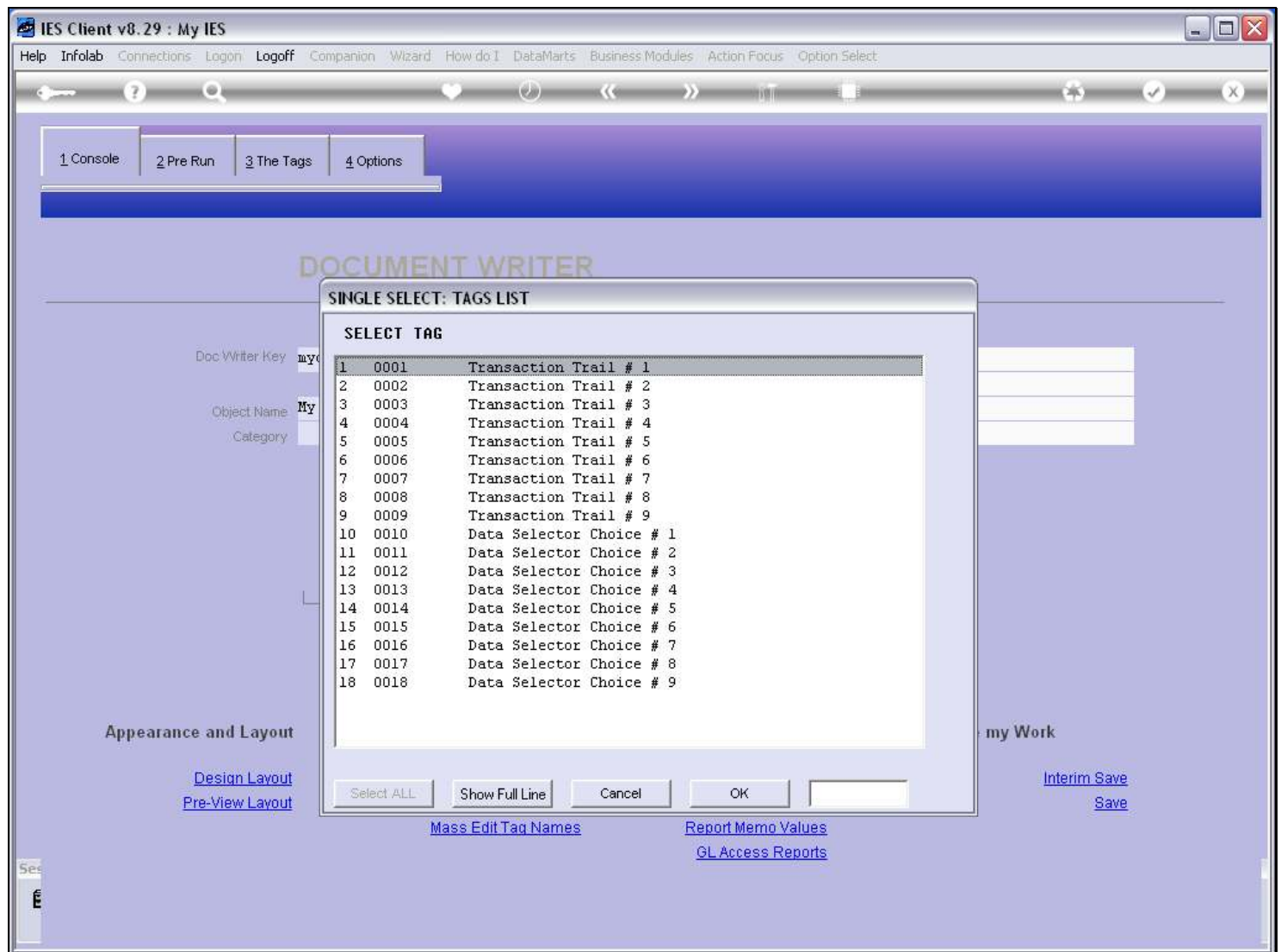
Slide notes

One of the options is to test only 1 Tag. In other words, the entire Report is not performed, but just 1 Tag.

Slide 3 - Slide 3



Slide notes

Slide 4 - Slide 4**Slide notes**

We select the Tag to test.

Slide 5 - Slide 5

The screenshot shows the IES Client v8.29: My IES window. The title bar includes 'Help', 'Submit', 'Quit', 'Functions', and 'Commands'. The main area displays a 'Data Selection: -' dialog box. The dialog contains the following text: 'This is a pre-selection of Data required for the current process. Please check the Help where necessary, before choosing NEXT ...'. Below this text are several input fields and buttons. The input fields are: 'Period From' (Jul 2010 (p 114)), 'Period To' (Jul 2010 (p 114)), 'Date From' (01/07/2010), 'Date To' (31/07/2010), 'Date Type' (processing date), 'Time Frame' (time range), 'Time From' (00:00:01), and 'Time To' (23:59:59). The 'Operator / User' field is empty. To the right of the input fields are buttons for 'Today', 'Yesterday', '7 Days', '14 Days', '30 Days', and 'Next'. The bottom status bar shows 'Session Info: Terry is using IES' and a taskbar with icons for 'Devtool', 'Application Wizard', 'Pre Data Selection', 'BGFRIEND-TRANS-SELECT-1', and a clock showing '2010/08/19 15:32:53'.

IES Client v8.29 : My IES

Help Submit Quit Functions Commands

Data Selection: -

This is a pre-selection of Data required for the current process. Please check the Help where necessary, before choosing NEXT ...

Today
Yesterday
7 Days
14 Days
30 Days
Next

Period From Jul 2010 (p 114)
Period To Jul 2010 (p 114)
Date From 01/07/2010
Date To 31/07/2010
Date Type processing date
Time Frame time range
Time From 00:00:01
Time To 23:59:59
Operator / User

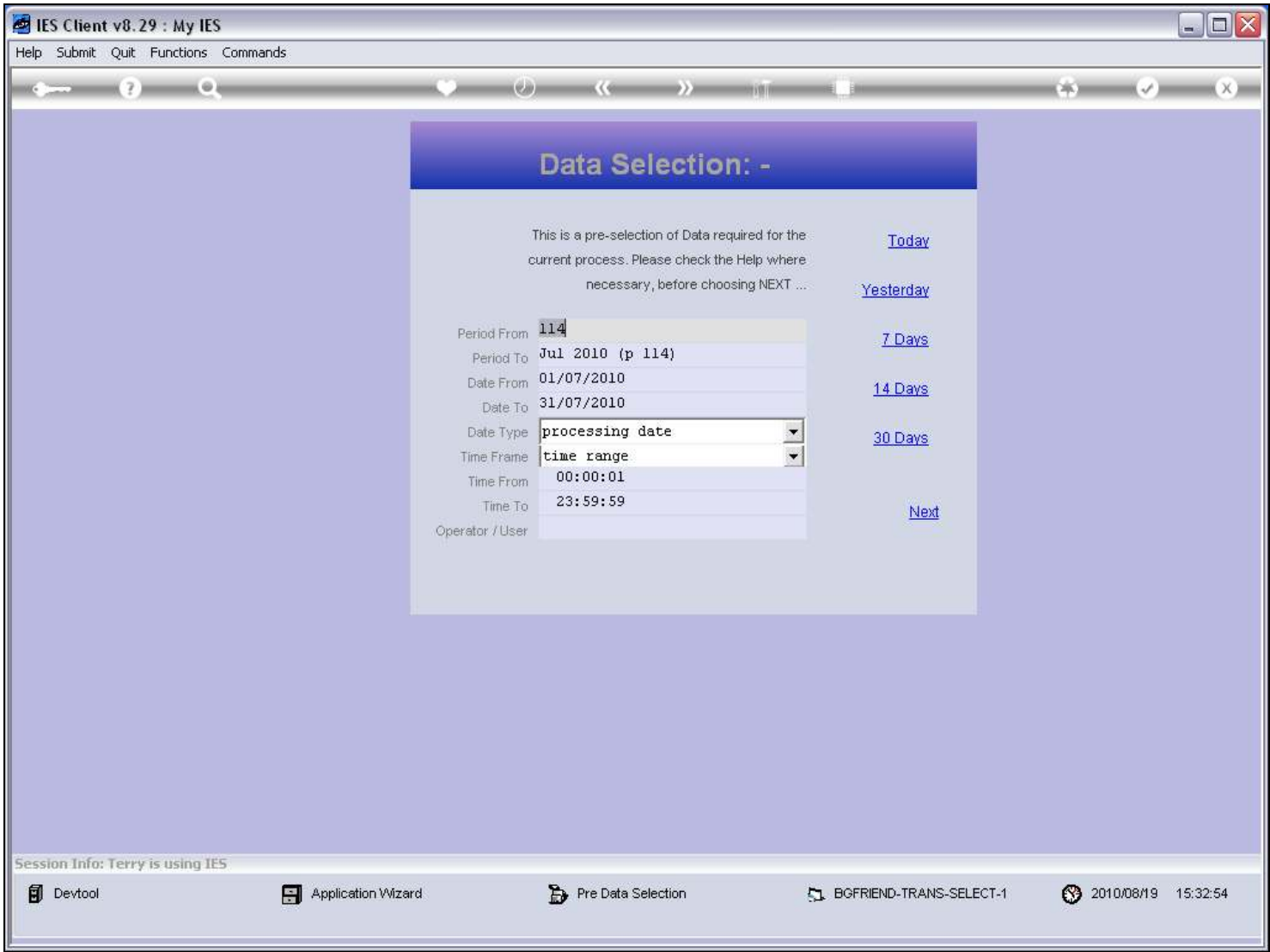
Session Info: Terry is using IES

Devtool Application Wizard Pre Data Selection BGFRIEND-TRANS-SELECT-1 2010/08/19 15:32:53

Slide notes

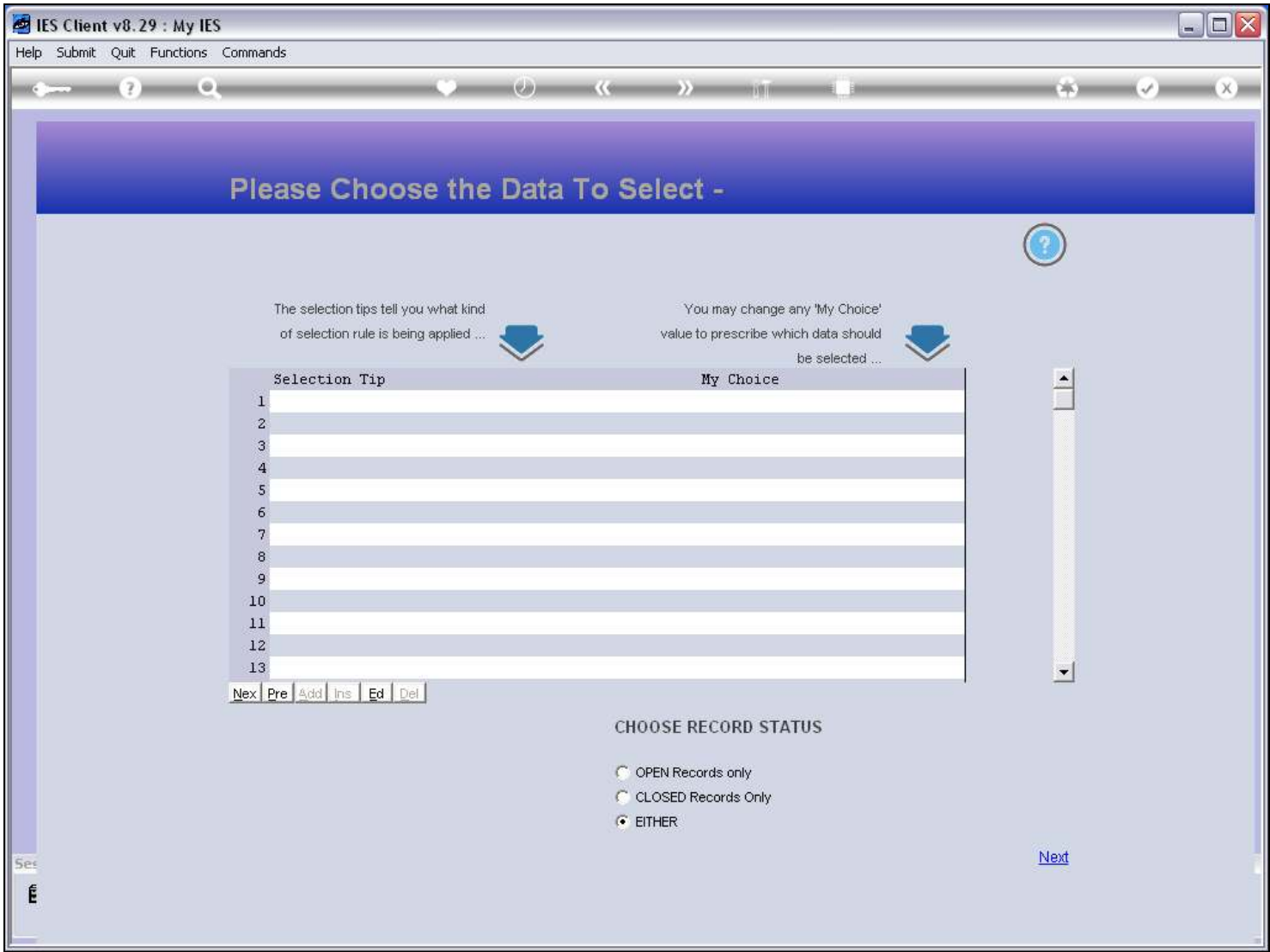
And any Pre Run processes and / or Data Selectors will pop up for our choices.

Slide 6 - Slide 6



Slide notes

Slide 7 - Slide 7



Slide notes

Slide 8 - Slide 8

IES Client v8.29 : My IES

Help Submit Quit Functions Commands

Please Choose the Data To Select -

The selection tips tell you what kind of selection rule is being applied ...

You may change any 'My Choice' value to prescribe which data should be selected ...

Selection Tip	My Choice
1 Ctrl Acct = ?	[]
2 Asset Ctrl Code = ?	[]
3 Disposal Date >= ?	19/08/2010
4 Group Key = ?	[]
5 Loss On Sale >=	0
6 Loss On Sale <=	9999999999999999
7 Profit On Sale >=	0
8 Profit On Sale <=	9999999999999999
9 Accum Depr >=	0
10 Accum Depr <=	9999999999999999
11 Nbv >=	0
12 Nbv <=	9999999999999999
13 Purchase Price >=	0

Nex

Pre

Add

Ins

Ed

Del

CHOOSE RECORD STATUS

☐ OPEN Records only

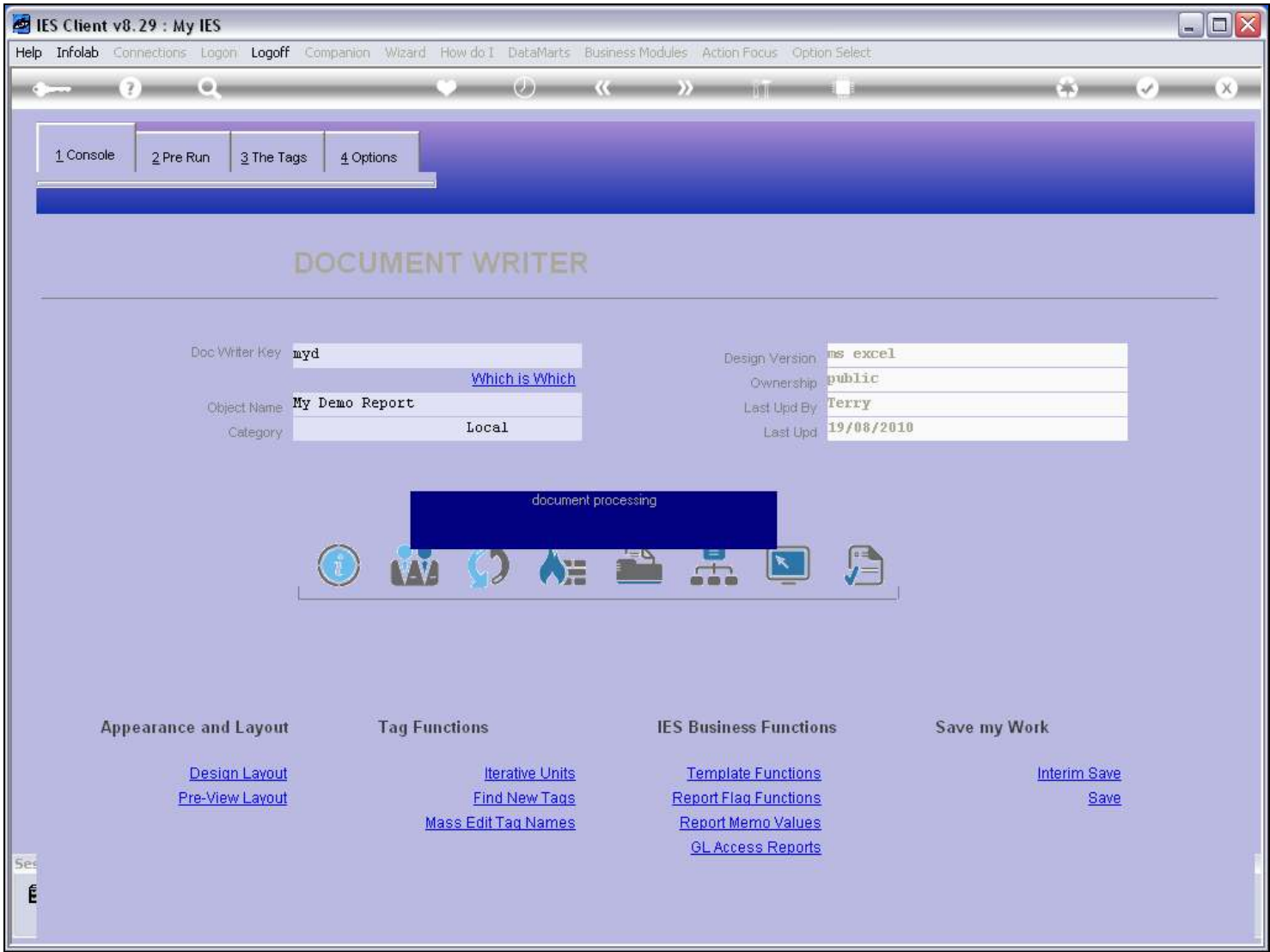
☐ CLOSED Records Only

☒ EITHER

Next

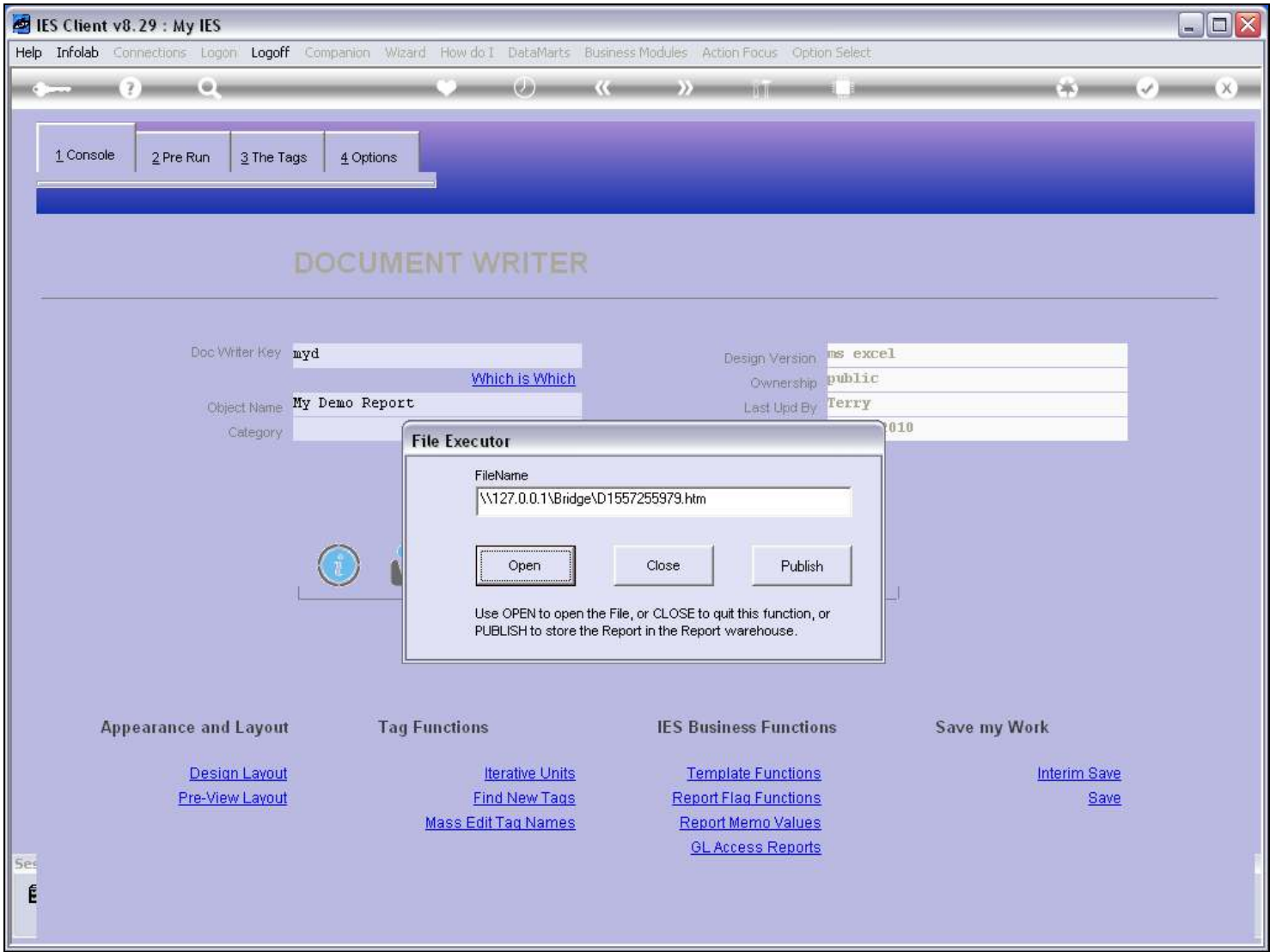
Slide notes

Slide 9 - Slide 9



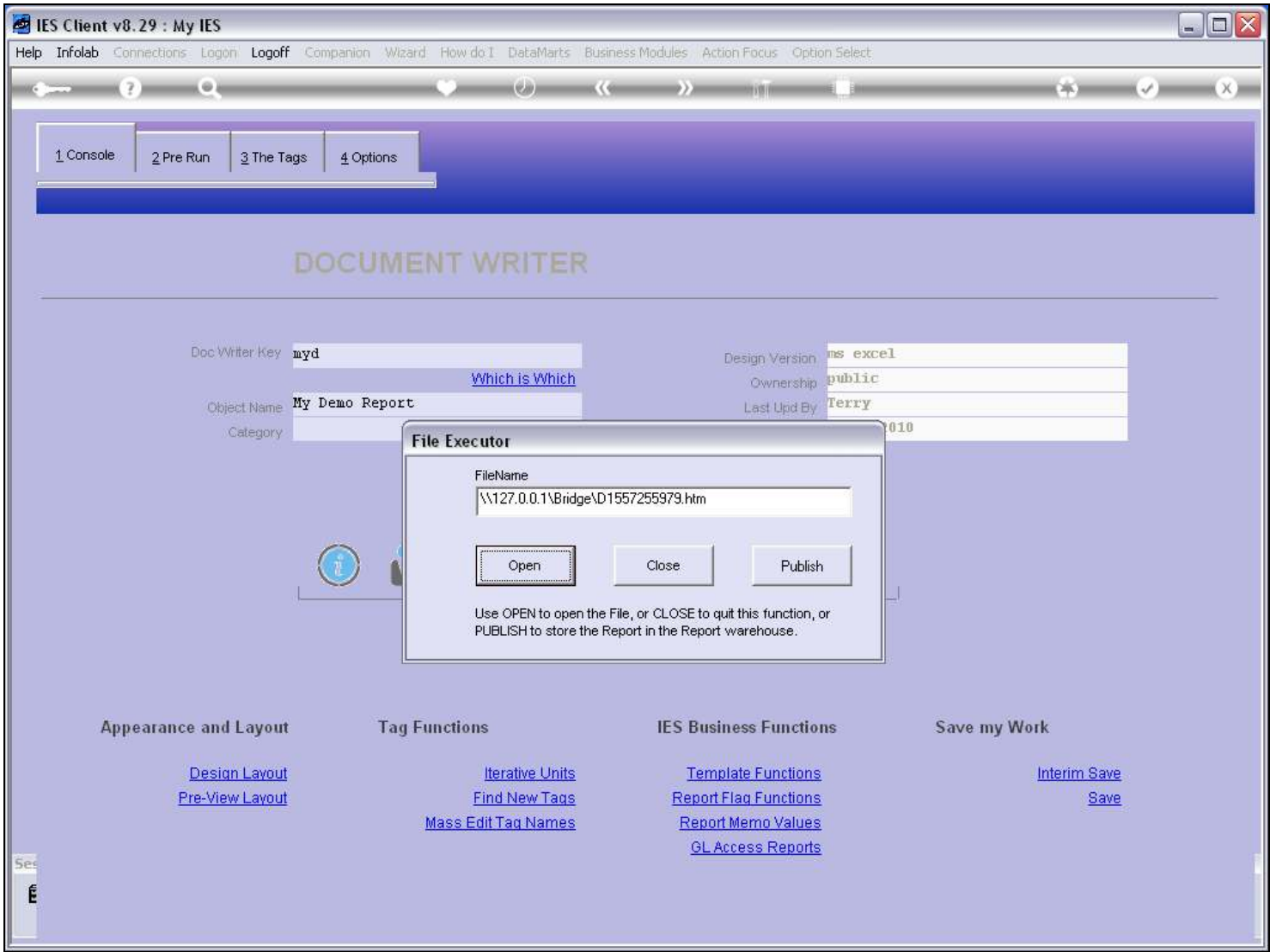
Slide notes

Slide 10 - Slide 10



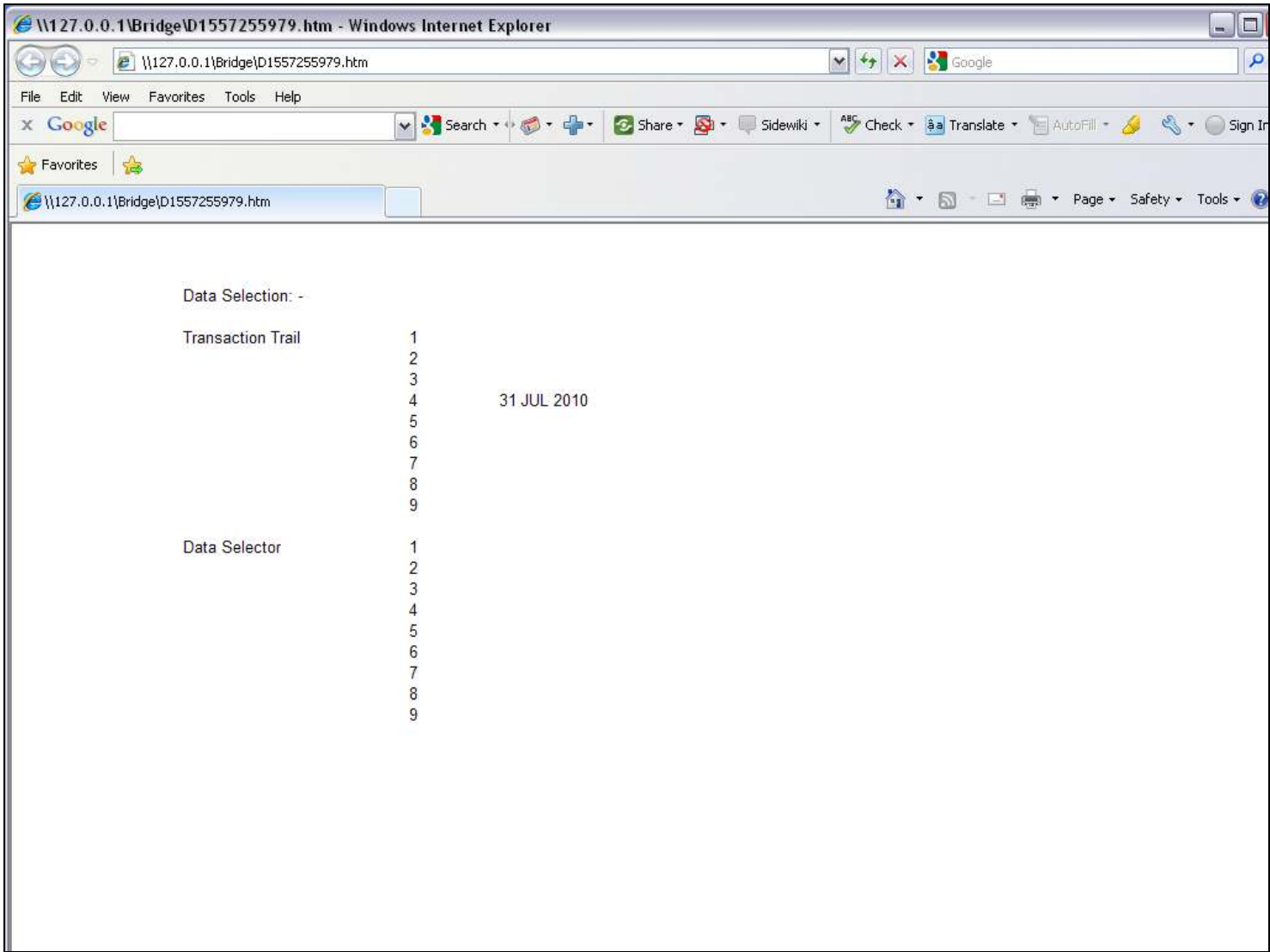
Slide notes

Slide 11 - Slide 11



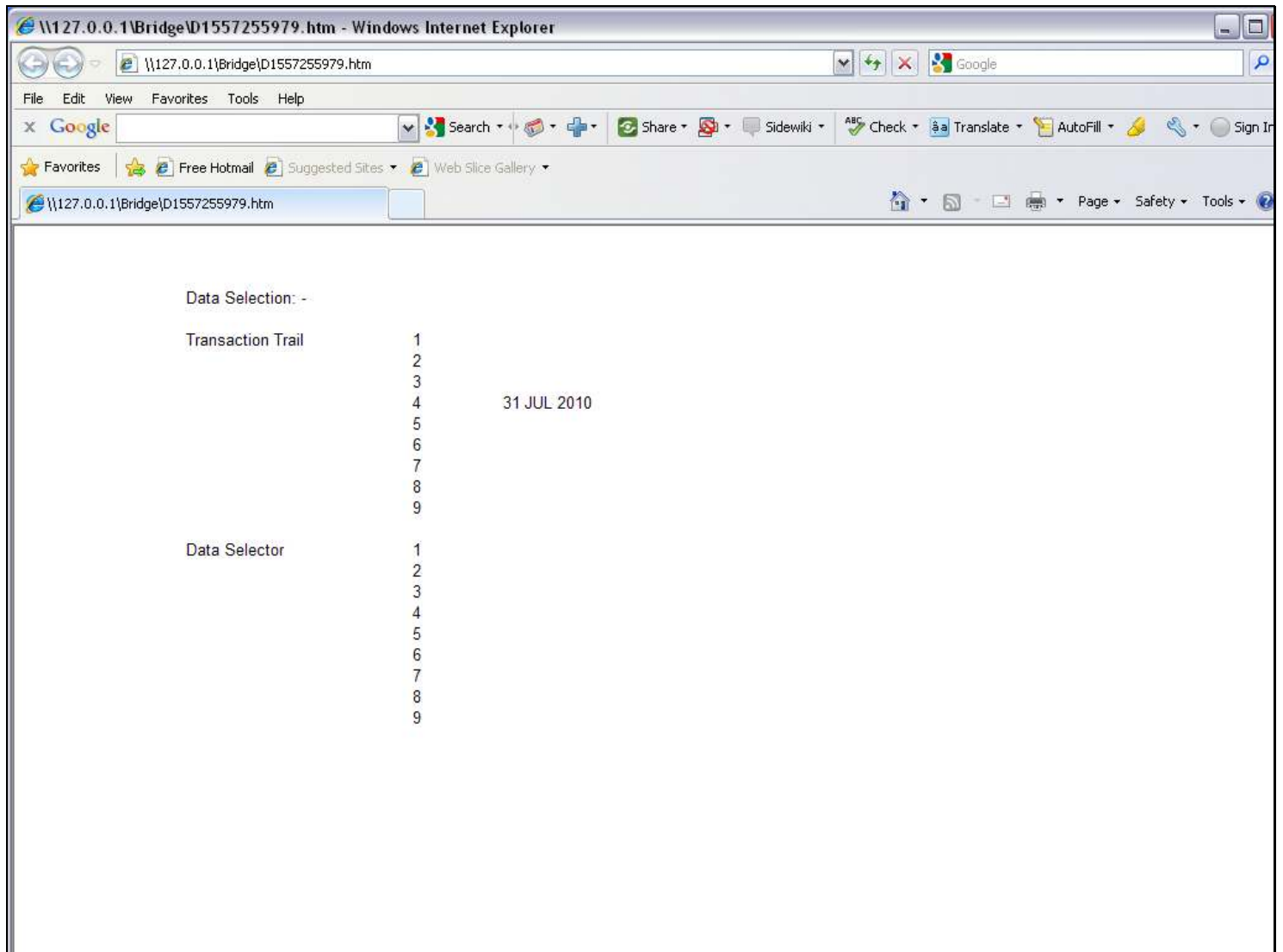
Slide notes

Slide 12 - Slide 12



Slide notes

This Report output has a result for only the 1 selected Tag.

Slide 13 - Slide 13**Slide notes**

Slide 14 - Slide 14

IES Client v8.29 : My IES

Help Submit Quit Functions Commands

IES REPORTS AND QUERIES: - User Instructions

NAME: USER SELECTED REPORT

1: - CHOOSE VERSION [Versions](#)

Report Version: system

2: - CHOOSE SETTINGS

Format: report
OutPut: FILE
File Type: txt text file
Template: 05: Gummy Hoops Inc
Report Header: *** not offered for adaptation ****

3: - CHOOSE DATA SELECTOR [Change Selector](#)

Data Selector: external data selection

4: - TO e-MAIL THE RESULTS Priority: normal
☐ Despatch By E-Mail Mail Drive: *
Mail To: report by mail
Mail Title: report by mail
Message Body: report by mail

5: - ADAPT DATA SELECTION (if prompts are present) [How to define MY CHOICE](#) [Restore Defaults](#)

Selection Tip	My Choice
1	

Nex Pre Add Ins Ed Del

6: - Record Select:

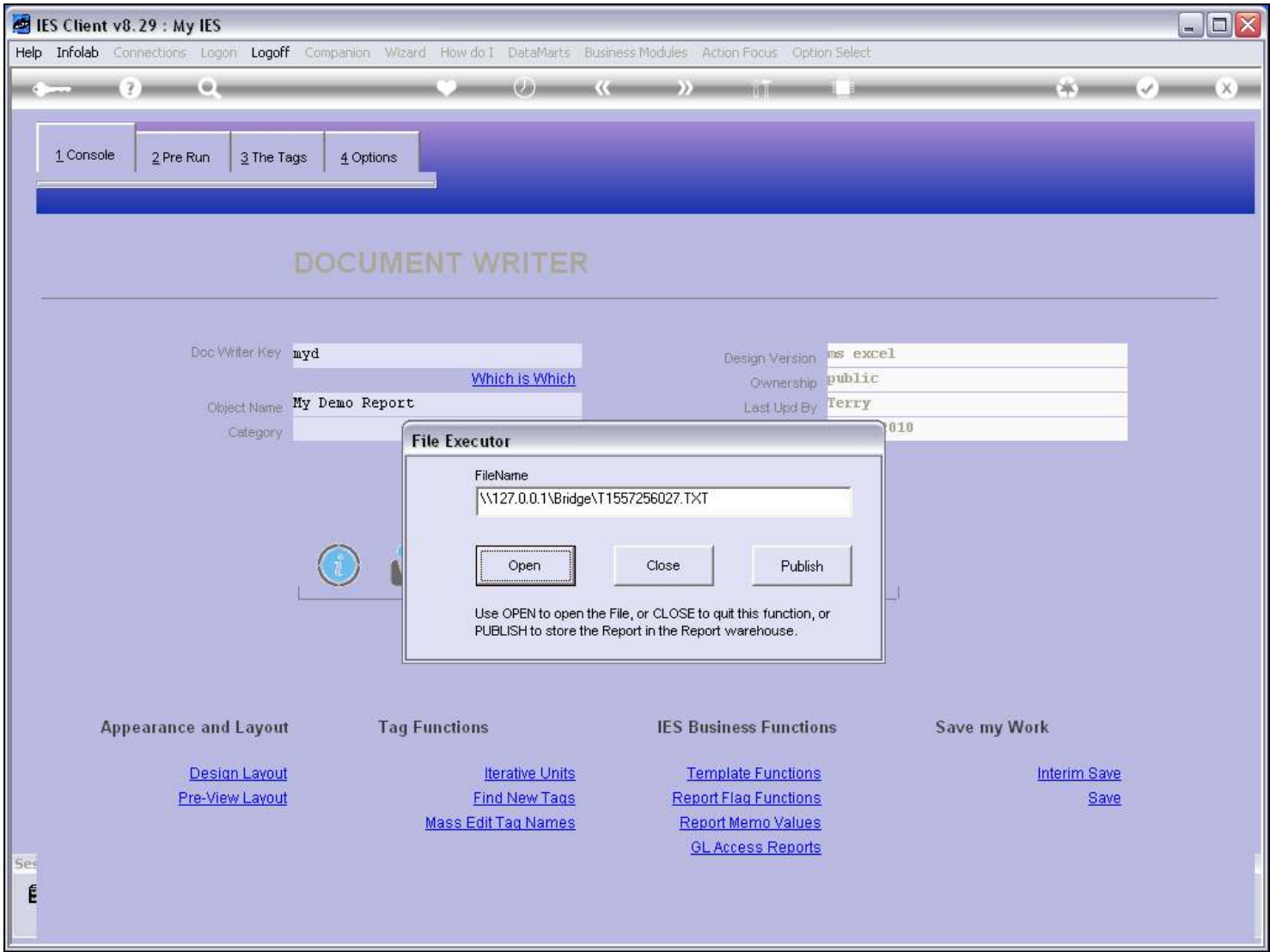
☐ OPEN Records only
☐ CLOSED Records Only
☒ EITHER

7: - CHOOSE NEXT [Next](#)

Slide notes

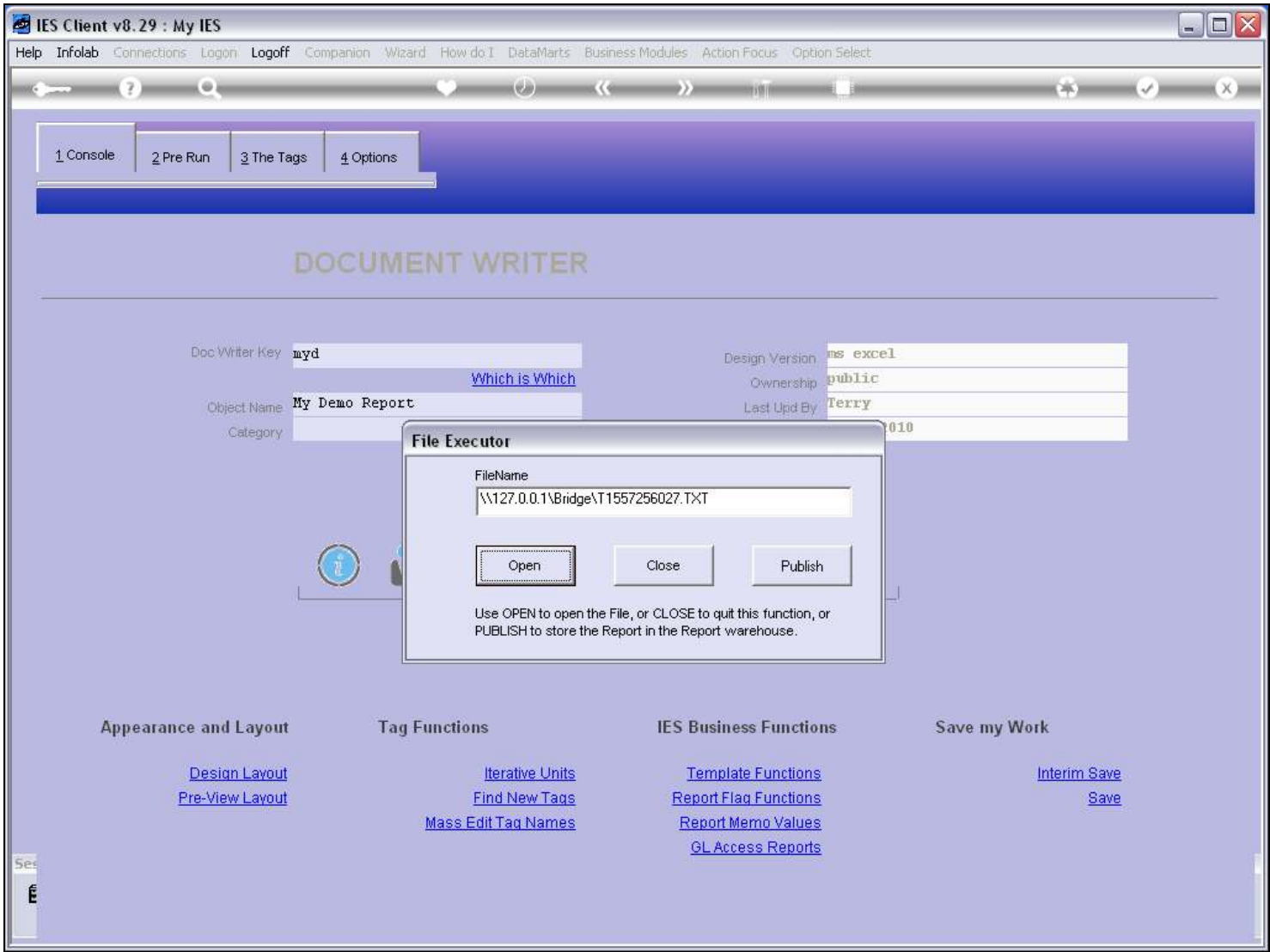
And this is followed by a debug Report for the execution of the selected Tag.

Slide 15 - Slide 15

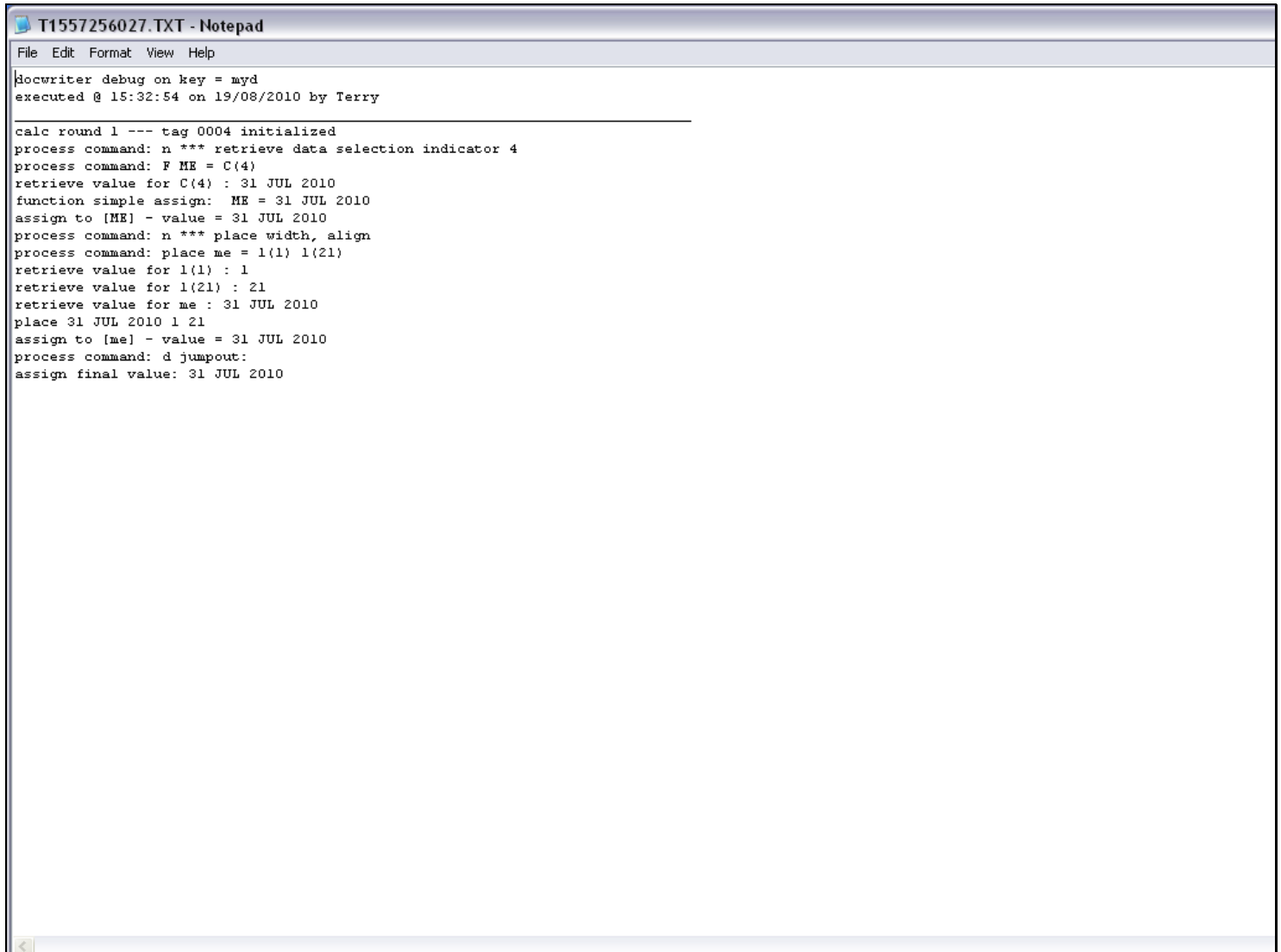


Slide notes

Slide 16 - Slide 16



Slide notes

Slide 17 - Slide 17

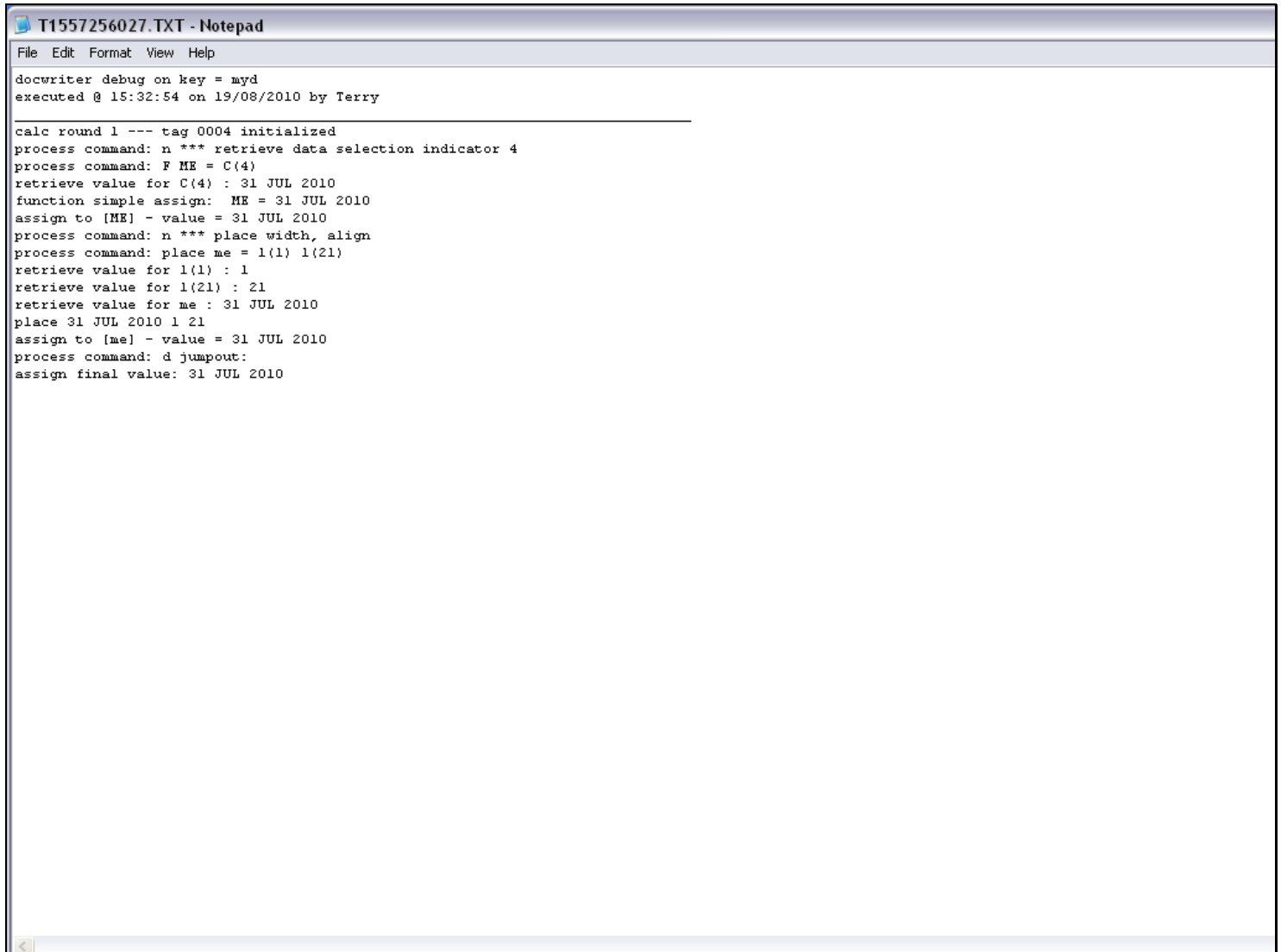
```
T1557256027.TXT - Notepad
File Edit Format View Help

Hocwriter debug on key = myd
executed @ 15:32:54 on 19/08/2010 by Terry

calc round 1 --- tag 0004 initialized
process command: n *** retrieve data selection indicator 4
process command: F ME = C(4)
retrieve value for C(4) : 31 JUL 2010
function simple assign: ME = 31 JUL 2010
assign to [ME] - value = 31 JUL 2010
process command: n *** place width, align
process command: place me = 1(1) 1(21)
retrieve value for 1(1) : 1
retrieve value for 1(21) : 21
retrieve value for me : 31 JUL 2010
place 31 JUL 2010 1 21
assign to [me] - value = 31 JUL 2010
process command: d jumpout:
assign final value: 31 JUL 2010
```

Slide notes

The debugging detail shows us all the steps performed during the Tag processing.

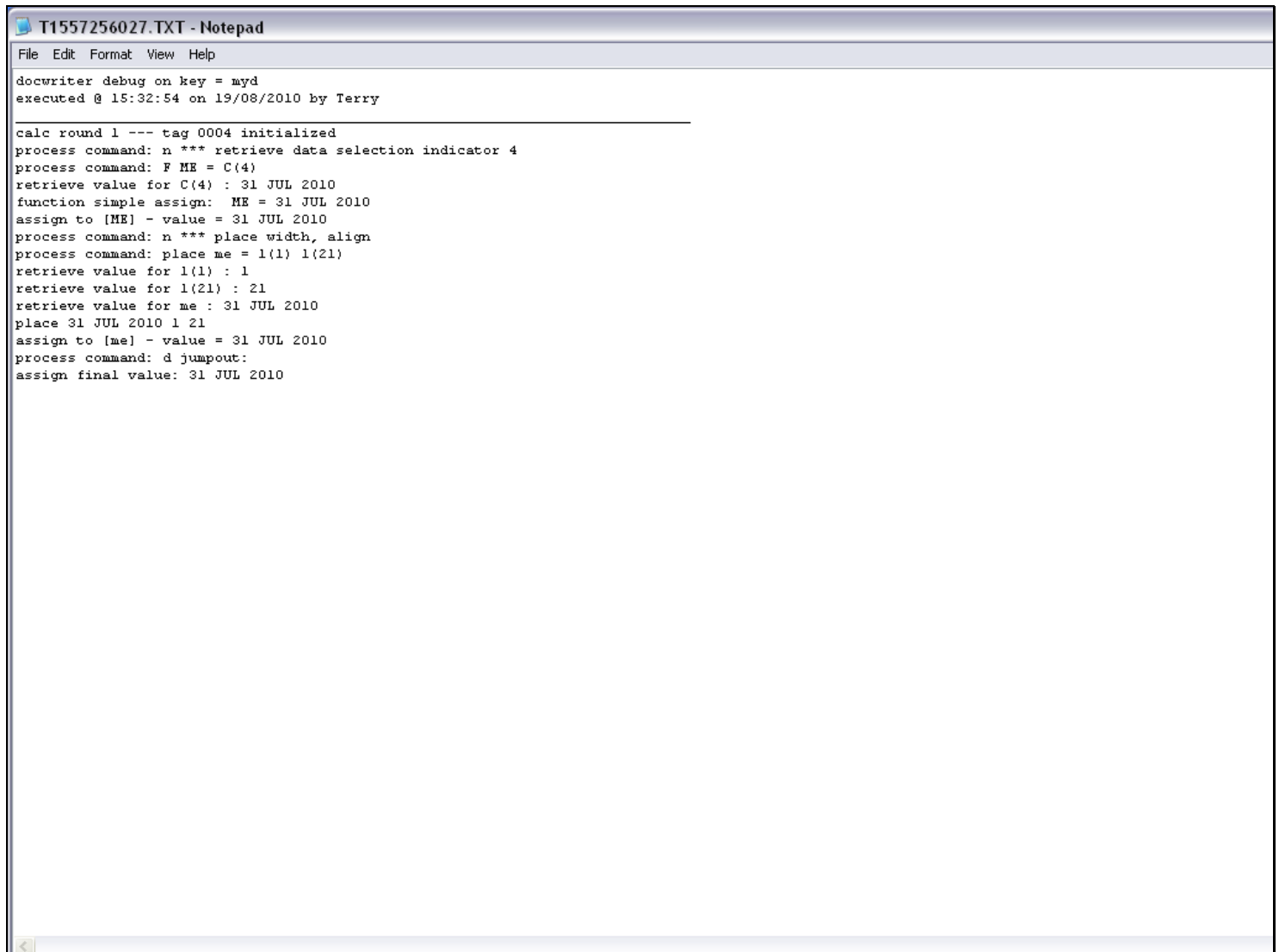
Slide 18 - Slide 18

```
T1557256027.TXT - Notepad
File Edit Format View Help

docwriter debug on key = myd
executed @ 15:32:54 on 19/08/2010 by Terry

calc round 1 --- tag 0004 initialized
process command: n *** retrieve data selection indicator 4
process command: F ME = C(4)
retrieve value for C(4) : 31 JUL 2010
function simple assign: ME = 31 JUL 2010
assign to [ME] - value = 31 JUL 2010
process command: n *** place width, align
process command: place me = 1(1) 1(21)
retrieve value for 1(1) : 1
retrieve value for 1(21) : 21
retrieve value for me : 31 JUL 2010
place 31 JUL 2010 1 21
assign to [me] - value = 31 JUL 2010
process command: d jumpout:
assign final value: 31 JUL 2010
```

Slide notes

Slide 19 - Slide 19

```
T1557256027.TXT - Notepad
File Edit Format View Help

docwriter debug on key = myd
executed @ 15:32:54 on 19/08/2010 by Terry

calc round 1 --- tag 0004 initialized
process command: n *** retrieve data selection indicator 4
process command: F ME = C(4)
retrieve value for C(4) : 31 JUL 2010
function simple assign: ME = 31 JUL 2010
assign to [ME] - value = 31 JUL 2010
process command: n *** place width, align
process command: place me = 1(1) 1(21)
retrieve value for 1(1) : 1
retrieve value for 1(21) : 21
retrieve value for me : 31 JUL 2010
place 31 JUL 2010 1 21
assign to [me] - value = 31 JUL 2010
process command: d jumpout:
assign final value: 31 JUL 2010
```

Slide notes