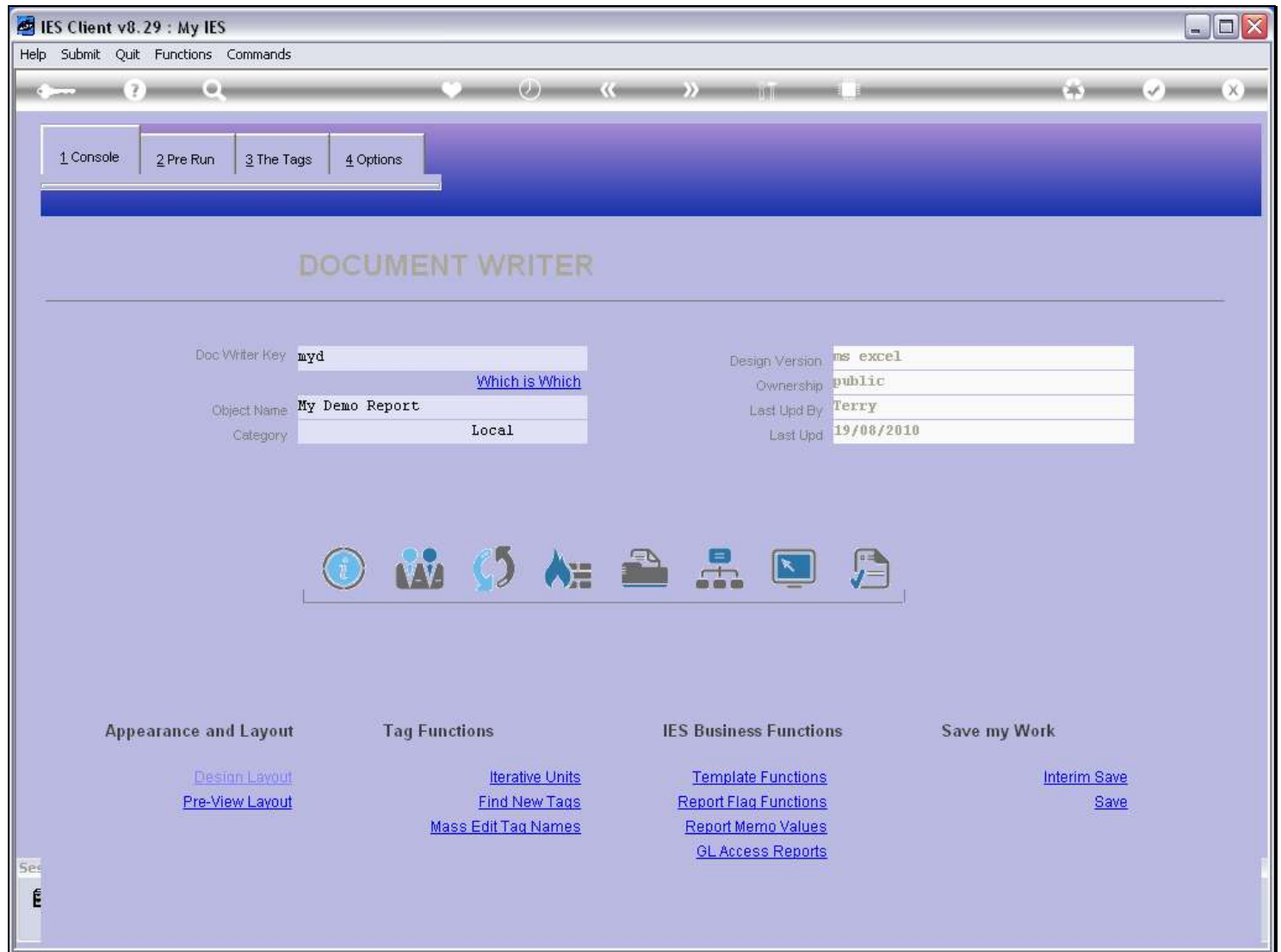


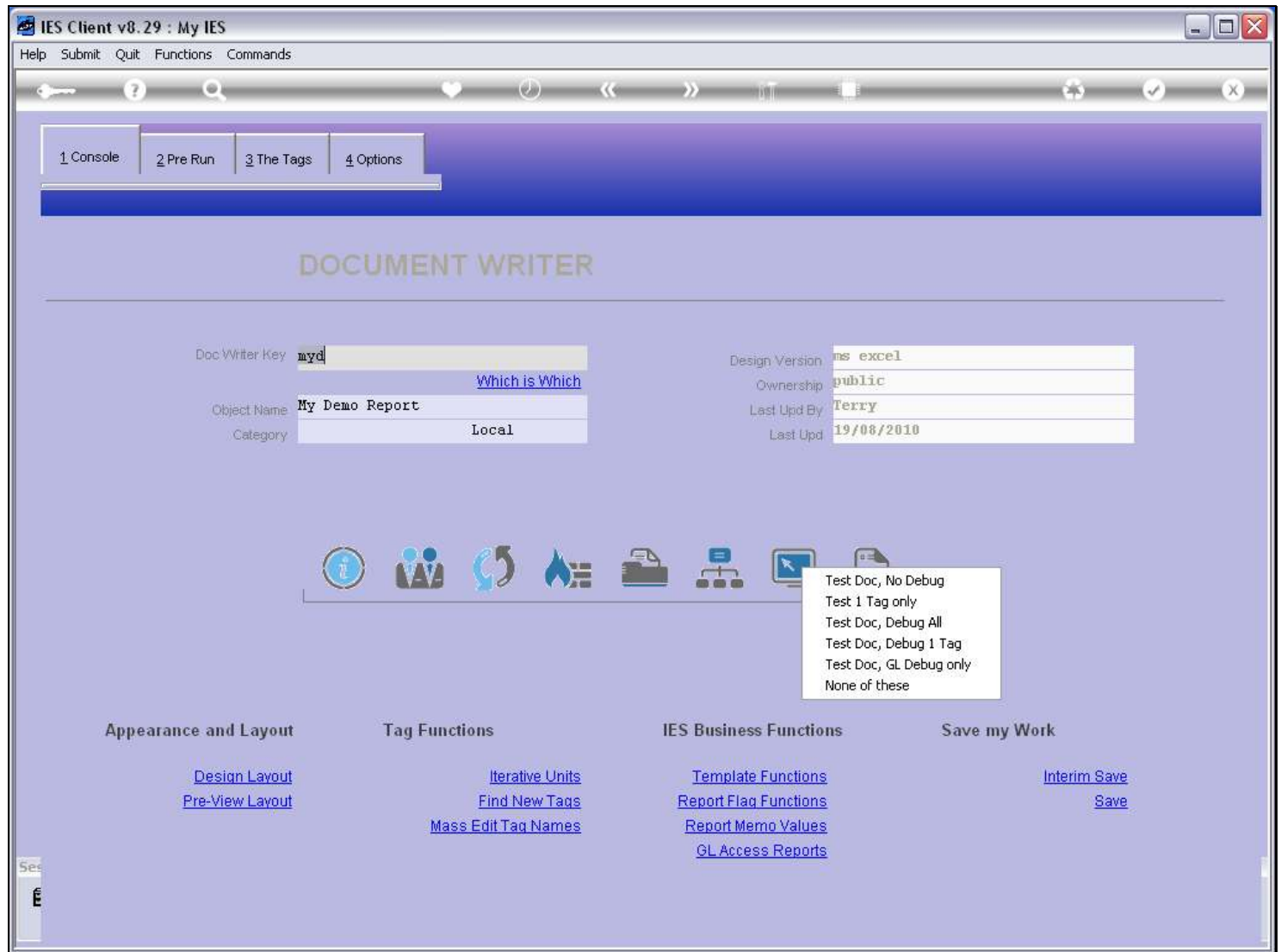
Slide 1 - Slide 1



Slide notes

When we test our DocWriter Report with the Test function, then we have a number of test options.

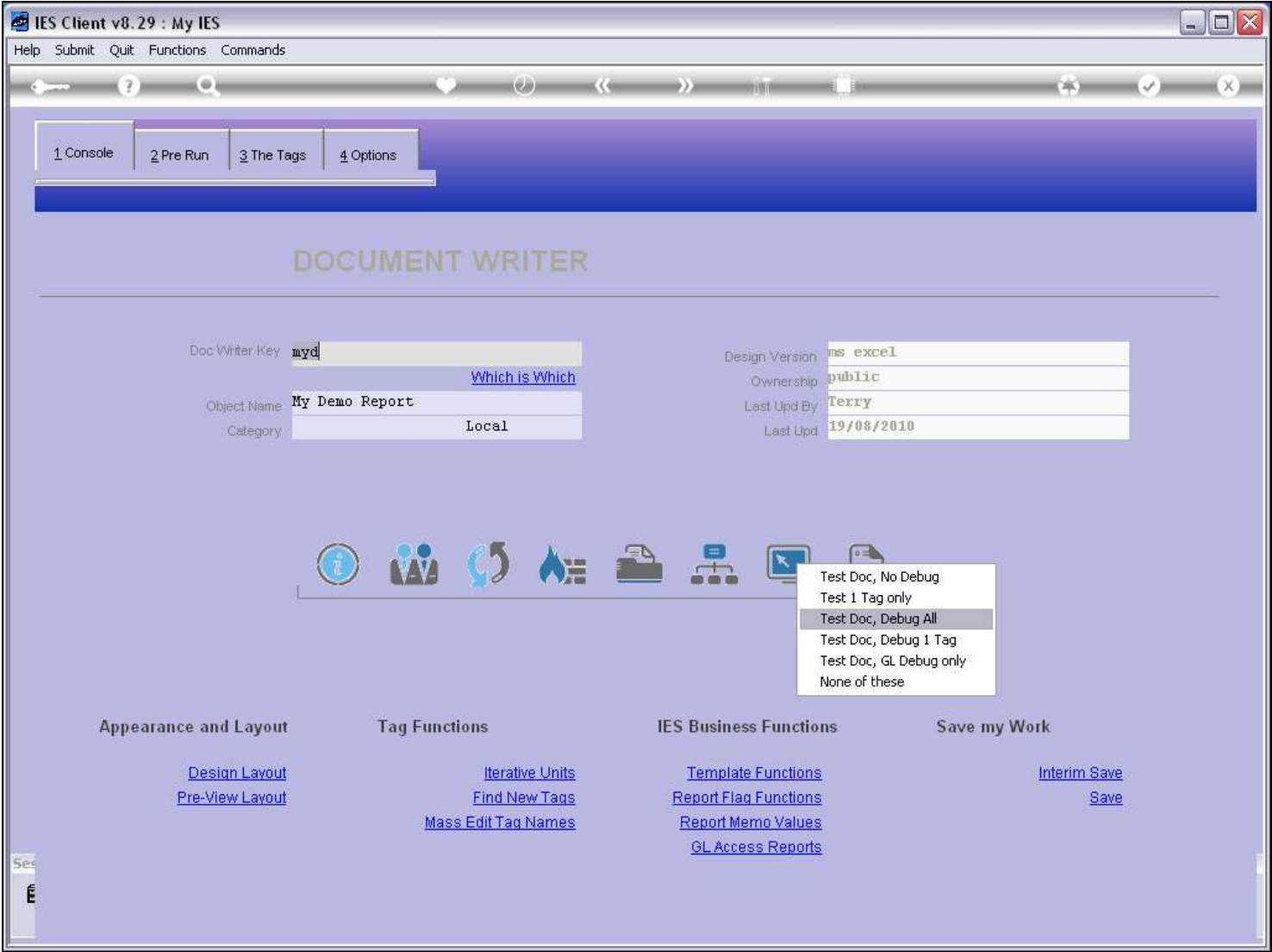
Slide 2 - Slide 2



Slide notes

One of the options is to test the Report and at the same time to debug ALL Tag processing in the process.

Slide 3 - Slide 3



Slide notes

Slide 4 - Slide 4

The screenshot shows the IES Client v8.29: My IES application window. The title bar includes the application name and standard window controls. The menu bar contains: Help, Submit, Quit, Functions, Commands. The toolbar has icons for key, help, search, heart, clock, left arrow, right arrow, list, print, refresh, checkmark, and close. The main content area displays a 'Data Selection: -' dialog box. Inside the dialog, there is a message: 'This is a pre-selection of Data required for the current process. Please check the Help where necessary, before choosing NEXT ...'. To the right of this message are links: Today, Yesterday, 7 Days, 14 Days, 30 Days, and Next. The dialog also contains a form with the following fields: Period From (114), Period To (Jul 2010 (p 114)), Date From (01/07/2010), Date To (31/07/2010), Date Type (processing date), Time Frame (time range), Time From (00:00:01), Time To (23:59:59), and Operator / User. At the bottom of the application window, there is a status bar with the text 'Session Info: Terry is using IES' and a taskbar showing icons for Devtool, Application Wizard, Pre Data Selection, BGFRIEND-TRANS-SELECT-1, and a clock showing 2010/08/19 15:56:25.

IES Client v8.29 : My IES

Help Submit Quit Functions Commands

Key ? Search Heart Clock Left Arrow Right Arrow List Print Refresh Checkmark Close

Data Selection: -

This is a pre-selection of Data required for the current process. Please check the Help where necessary, before choosing NEXT ...

[Today](#)
[Yesterday](#)
[7 Days](#)
[14 Days](#)
[30 Days](#)
[Next](#)

Period From 114
Period To Jul 2010 (p 114)
Date From 01/07/2010
Date To 31/07/2010
Date Type processing date
Time Frame time range
Time From 00:00:01
Time To 23:59:59
Operator / User

Session Info: Terry is using IES

Devtool Application Wizard Pre Data Selection BGFRIEND-TRANS-SELECT-1 2010/08/19 15:56:25

Slide notes

The Pre Run processes and Data Selectors for the Report will pop up.

Slide 5 - Slide 5

IES Client v8.29 : My IES

Help Submit Quit Functions Commands

Please Choose the Data To Select -

The selection tips tell you what kind of selection rule is being applied ...

You may change any 'My Choice' value to prescribe which data should be selected ...

Selection Tip	My Choice
1	
2	
3	
4	
5	
6	
7	
8	
9	
10	
11	
12	
13	

Nex Pre Add Ins Ed Del

CHOOSE RECORD STATUS

☐ OPEN Records only

☐ CLOSED Records Only

☒ EITHER

[Next](#)

Slide notes

Slide 6 - Slide 6

IES Client v8.29 : My IES

Help Submit Quit Functions Commands

Please Choose the Data To Select -

The selection tips tell you what kind of selection rule is being applied ...

You may change any 'My Choice' value to prescribe which data should be selected ...

Selection Tip	My Choice
1 Ctrl Acct = ?	[]
2 Asset Ctrl Code = ?	[]
3 Disposal Date >= ?	19/08/2010
4 Group Key = ?	[]
5 Loss On Sale >=	0
6 Loss On Sale <=	9999999999999999
7 Profit On Sale >=	0
8 Profit On Sale <=	9999999999999999
9 Accum Depr >=	0
10 Accum Depr <=	9999999999999999
11 Nbv >=	0
12 Nbv <=	9999999999999999
13 Purchase Price >=	0

Nex

Pre

Add

Ins

Ed

Del

CHOOSE RECORD STATUS

☐ OPEN Records only

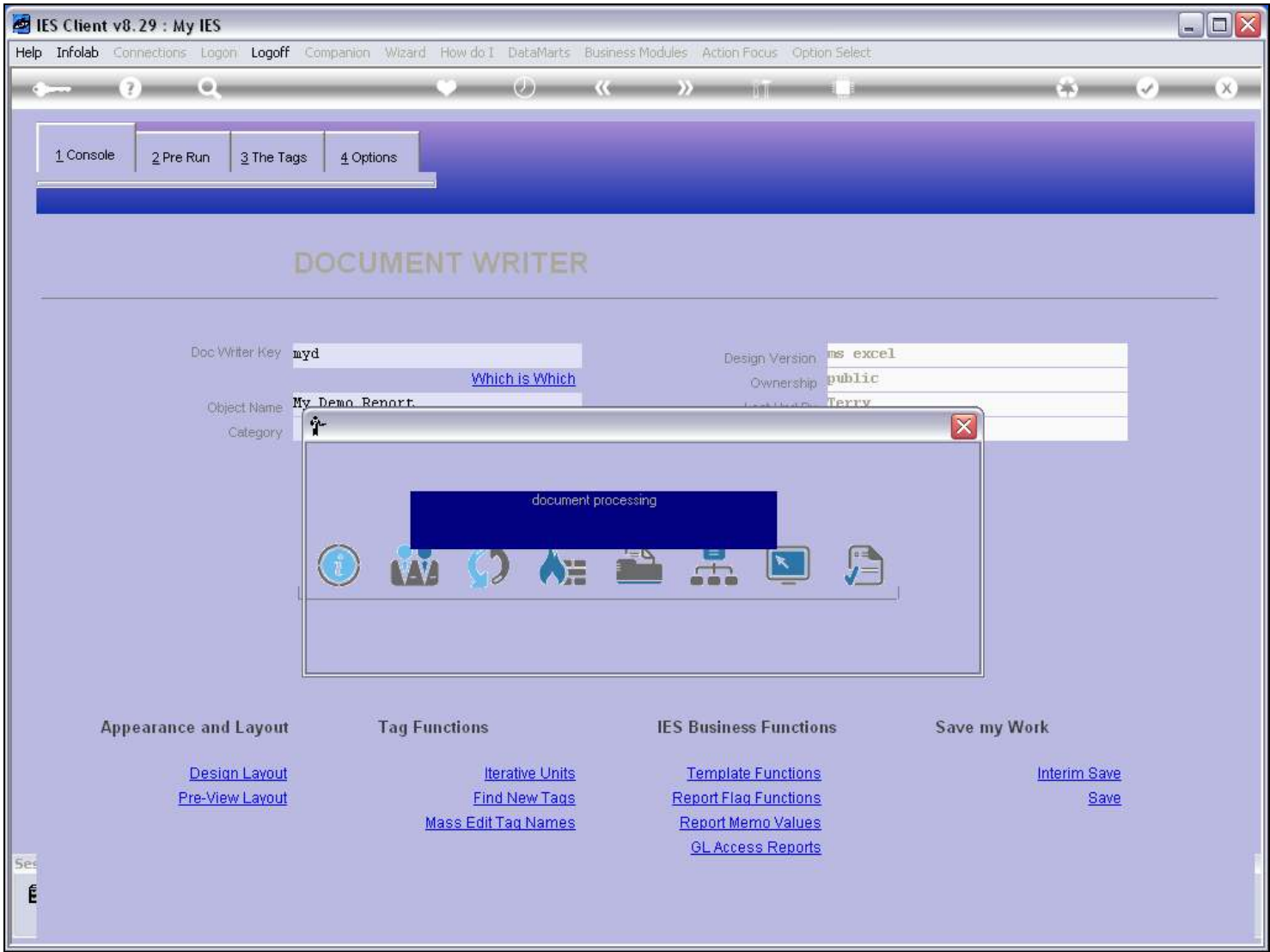
☐ CLOSED Records Only

☒ EITHER

Next

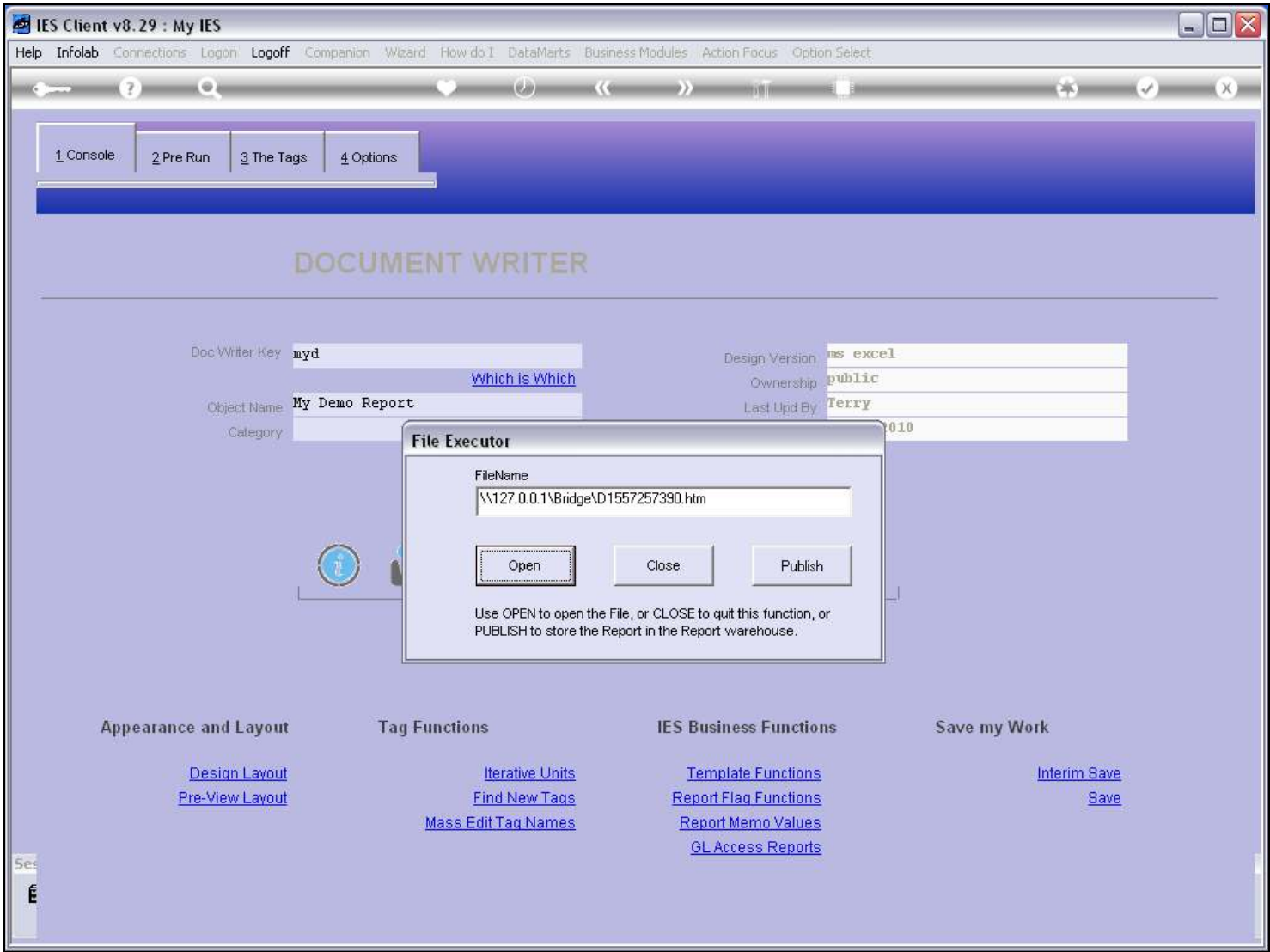
Slide notes

Slide 7 - Slide 7



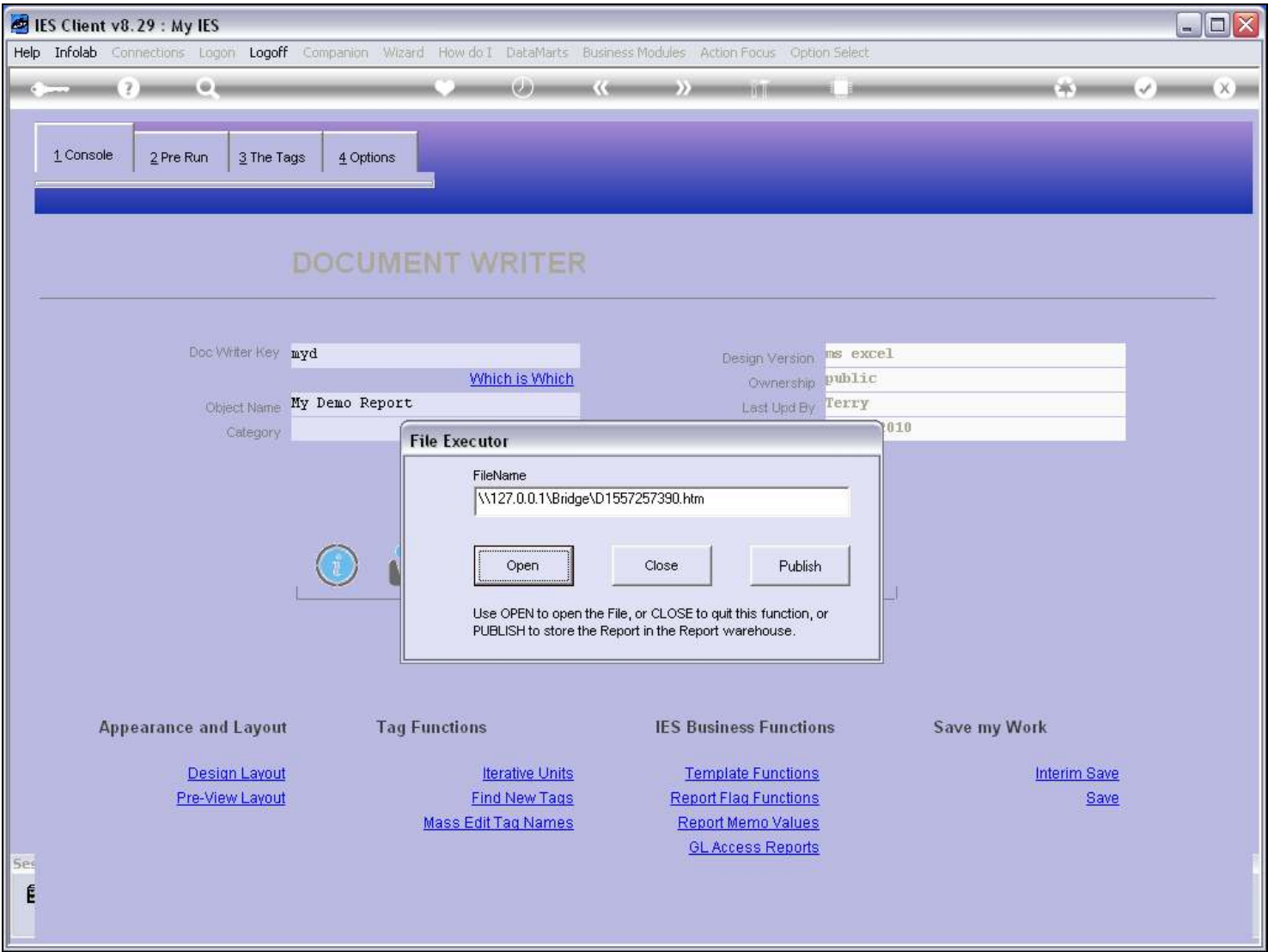
Slide notes

Slide 8 - Slide 8

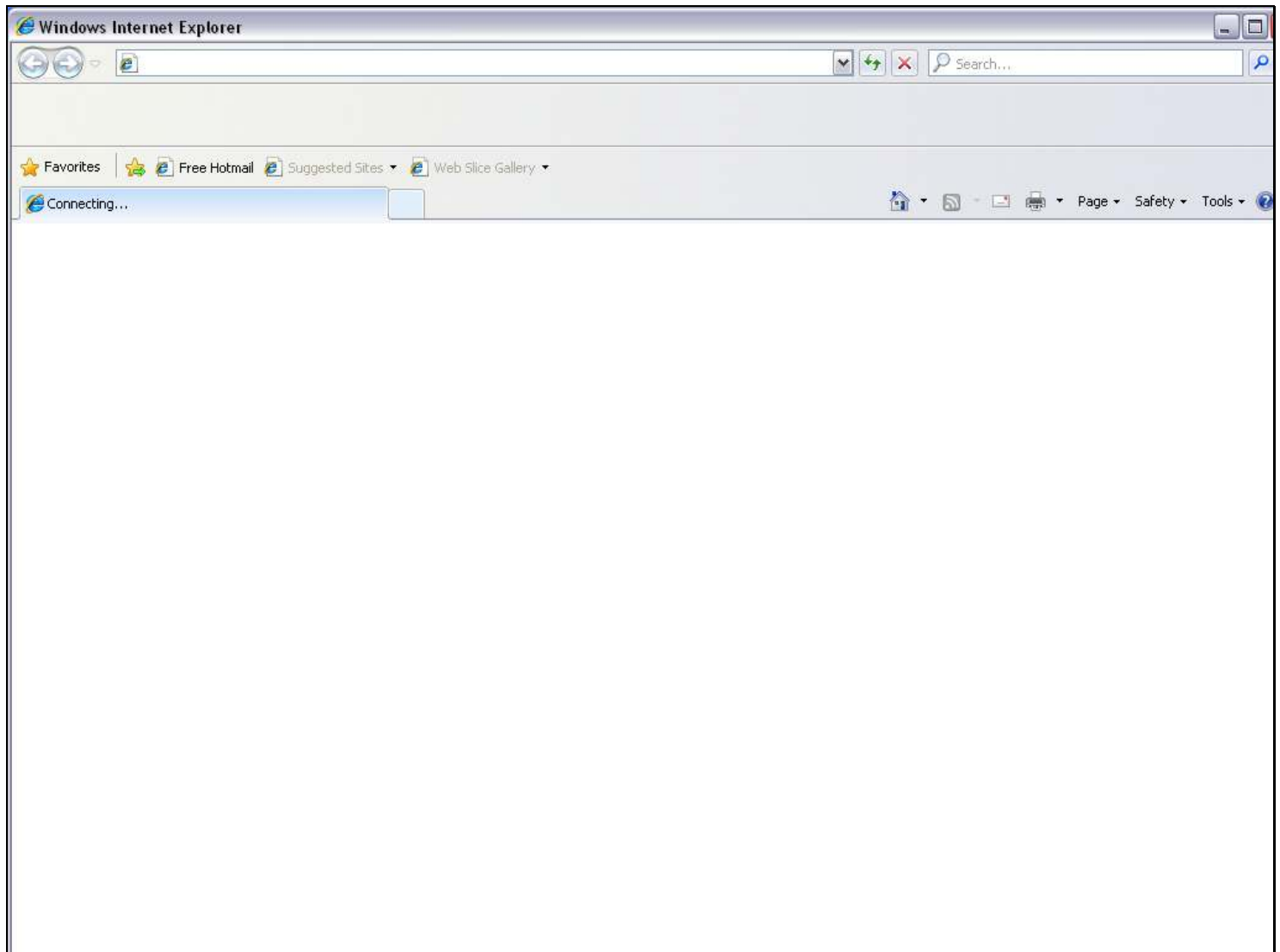


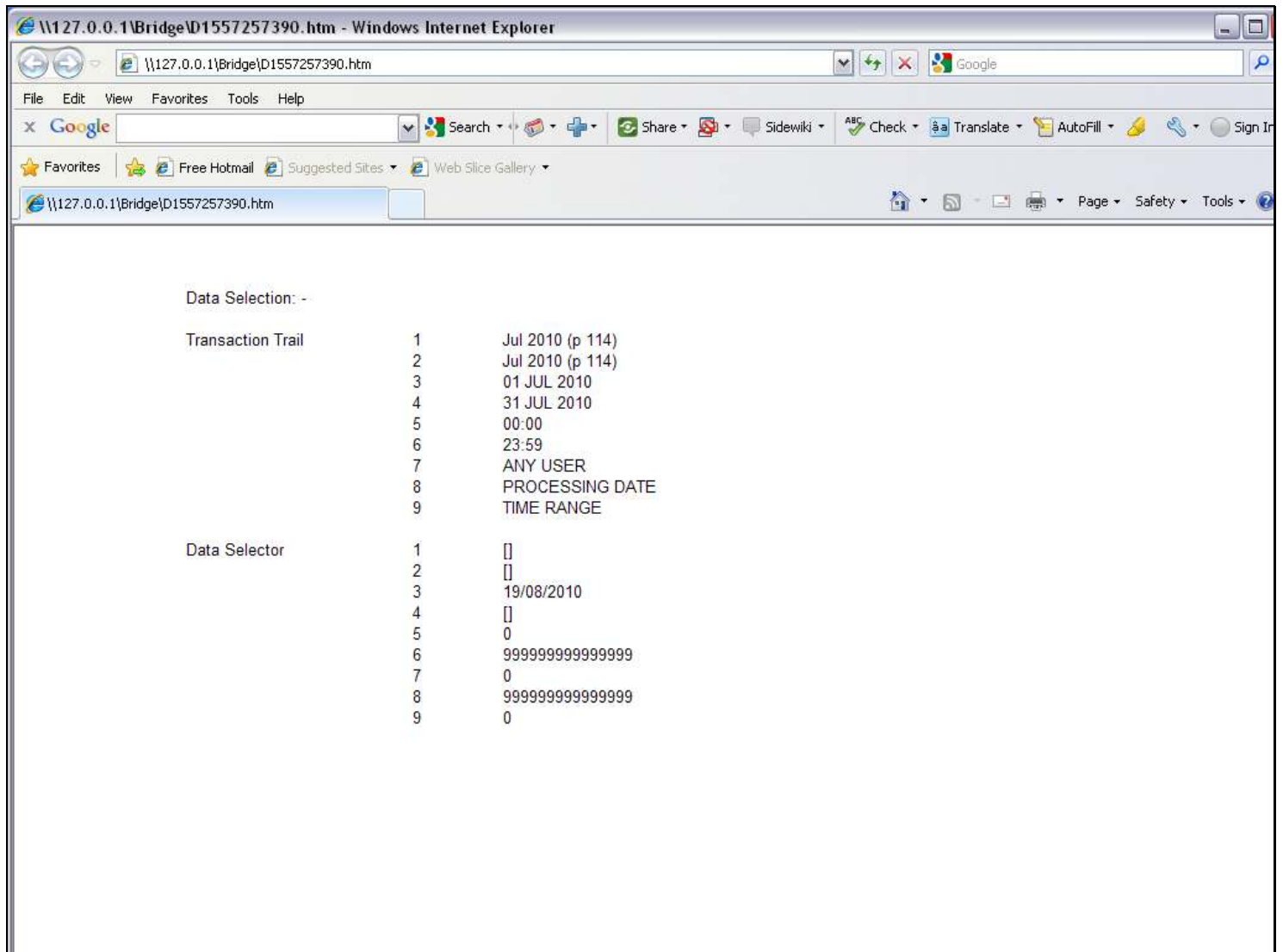
Slide notes

Slide 9 - Slide 9



Slide notes

Slide 10 - Slide 10**Slide notes**

Slide 11 - Slide 11

The screenshot shows a Windows Internet Explorer browser window. The address bar displays the URL `\\127.0.0.1\Bridge\ID1557257390.htm`. The browser's menu bar includes File, Edit, View, Favorites, Tools, and Help. The toolbar contains various icons for navigation and search. The main content area displays two tables.

Data Selection: -

Transaction Trail	1	Jul 2010 (p 114)
	2	Jul 2010 (p 114)
	3	01 JUL 2010
	4	31 JUL 2010
	5	00:00
	6	23:59
	7	ANY USER
	8	PROCESSING DATE
	9	TIME RANGE

Data Selector

	1	[]
	2	[]
	3	19/08/2010
	4	[]
	5	0
	6	9999999999999999
	7	0
	8	9999999999999999
	9	0

Slide notes

We have the Report result first, i.e. before the debugging Report.

Slide 12 - Slide 12

IES Client v8.29 : My IES

Help Submit Quit Functions Commands

IES REPORTS AND QUERIES: - User Instructions

NAME: USER SELECTED REPORT

1: - CHOOSE VERSION [Versions](#)

Report Version: system

2: - CHOOSE SETTINGS

Format: report

OutPut: FILE

File Type: txt text file

Template: 05: Gummy Hoops Inc

Report Header: *** not offered for adaptation ****

3: - CHOOSE DATA SELECTOR [Change Selector](#)

Data Selector: external data selection

4: - TO e-MAIL THE RESULTS Priority: normal

☐ Despatch By E-Mail Mail Drive *

Mail To: report by mail

Mail Title: report by mail

Message Body: report by mail

5: - ADAPT DATA SELECTION (if prompts are present) [How to define MY CHOICE](#) [Restore Defaults](#)

Selection Tip	My Choice
1	

Nex Pre Add Ins Ed Del

6: - Record Select:

☐ OPEN Records only

☐ CLOSED Records Only

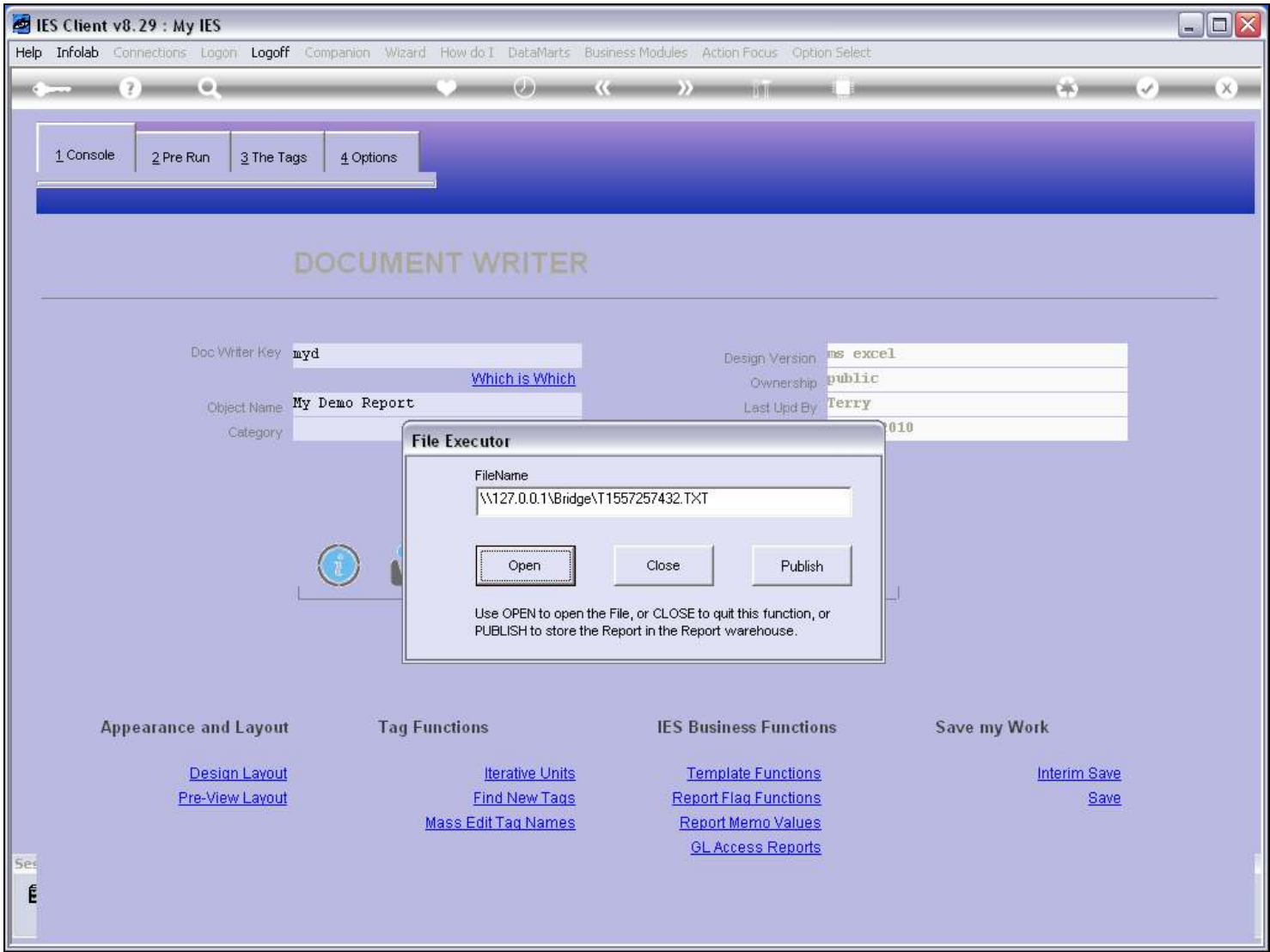
☒ EITHER

7: - CHOOSE NEXT [Next](#)

Slide notes

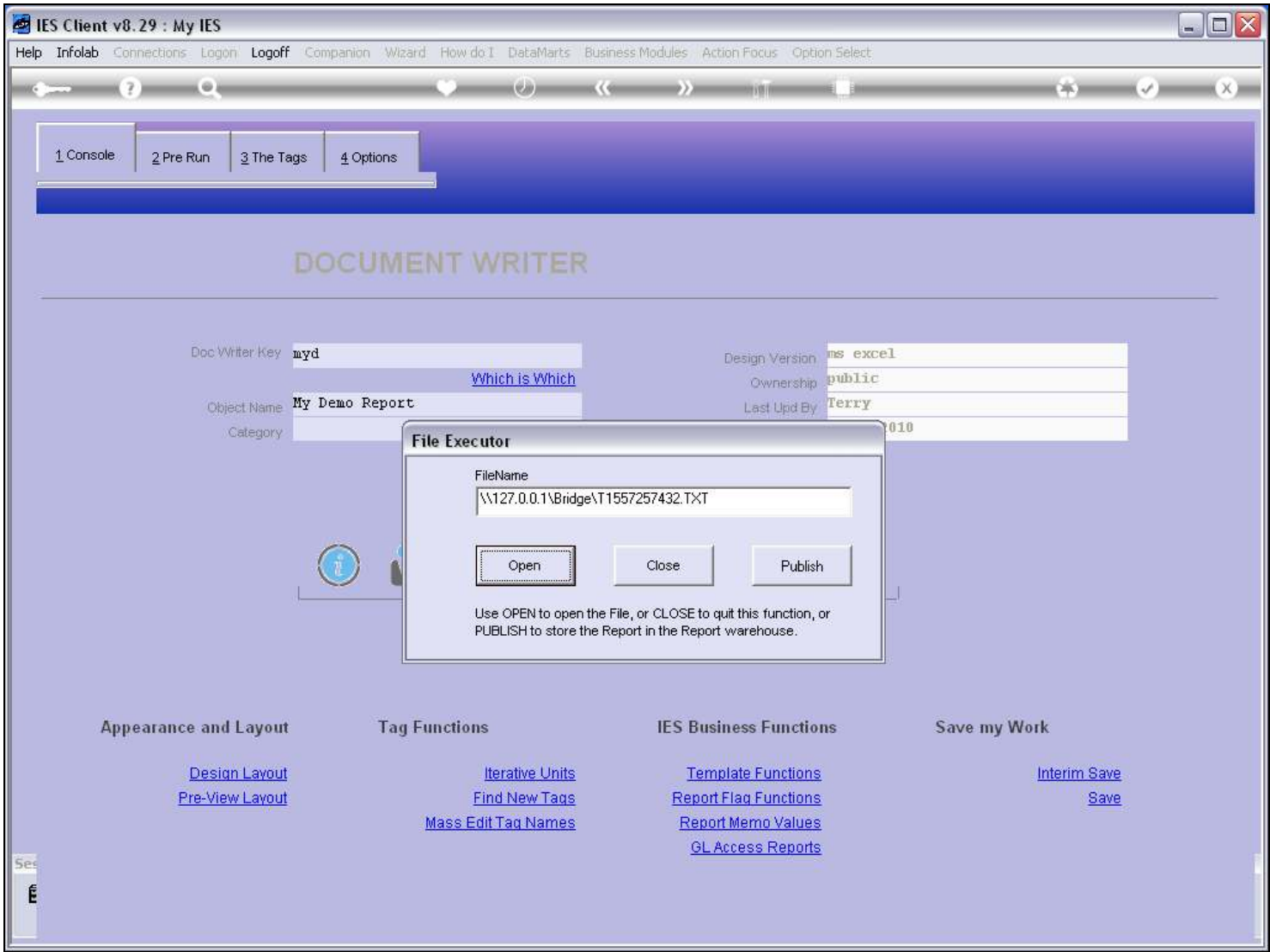
And this is then followed by the debugging Report.

Slide 13 - Slide 13



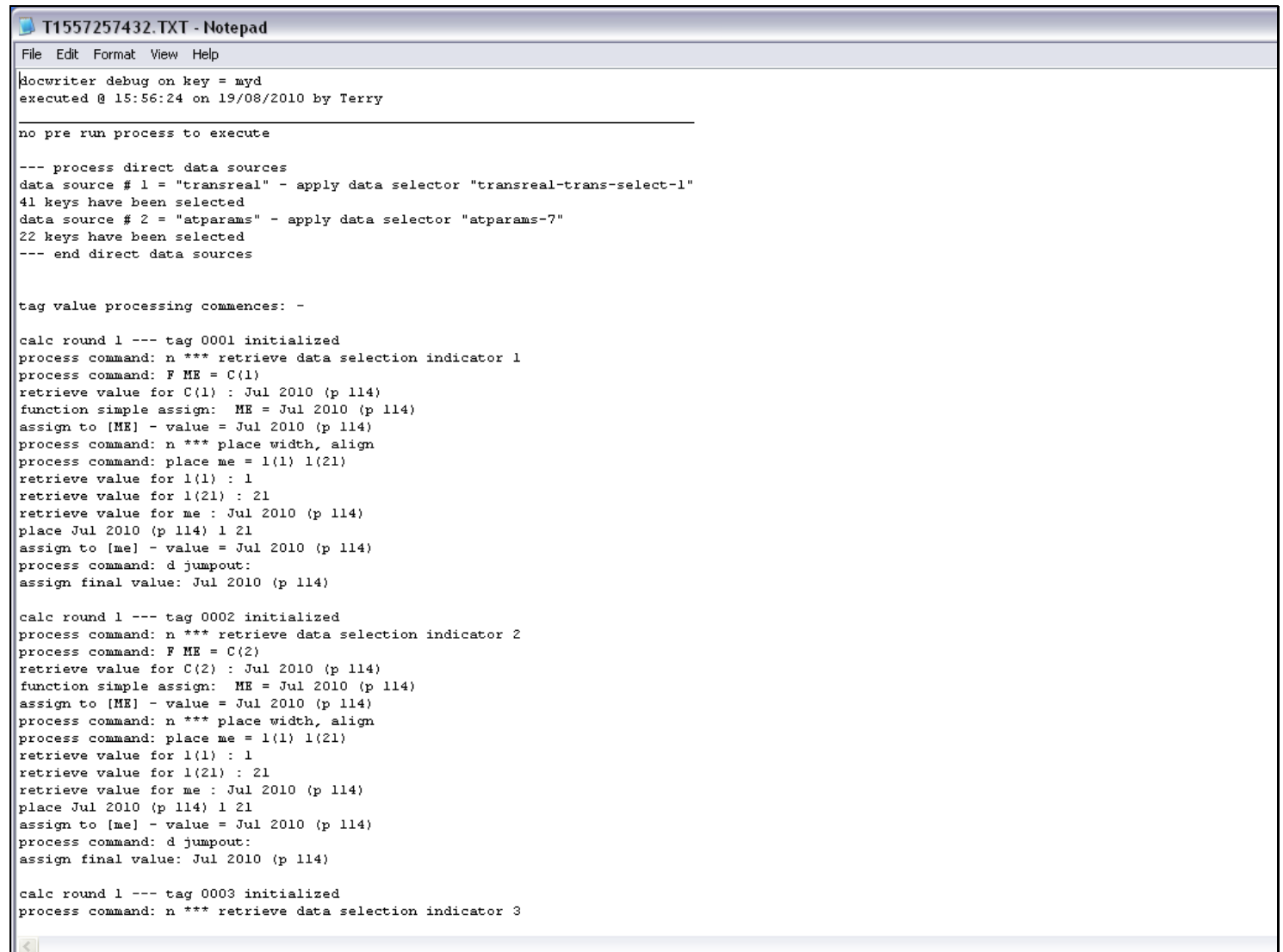
Slide notes

Slide 14 - Slide 14



Slide notes

Slide 15 - Slide 15



```
T1557257432.TXT - Notepad
File Edit Format View Help

Hocwriter debug on key = myd
executed @ 15:56:24 on 19/08/2010 by Terry

no pre run process to execute

--- process direct data sources
data source # 1 = "transreal" - apply data selector "transreal-trans-select-1"
41 keys have been selected
data source # 2 = "atparams" - apply data selector "atparams-7"
22 keys have been selected
--- end direct data sources

tag value processing commences: -

calc round 1 --- tag 0001 initialized
process command: n *** retrieve data selection indicator 1
process command: F ME = C(1)
retrieve value for C(1) : Jul 2010 (p 114)
function simple assign: ME = Jul 2010 (p 114)
assign to [ME] - value = Jul 2010 (p 114)
process command: n *** place width, align
process command: place me = 1(1) 1(21)
retrieve value for 1(1) : 1
retrieve value for 1(21) : 21
retrieve value for me : Jul 2010 (p 114)
place Jul 2010 (p 114) 1 21
assign to [me] - value = Jul 2010 (p 114)
process command: d jumpout:
assign final value: Jul 2010 (p 114)

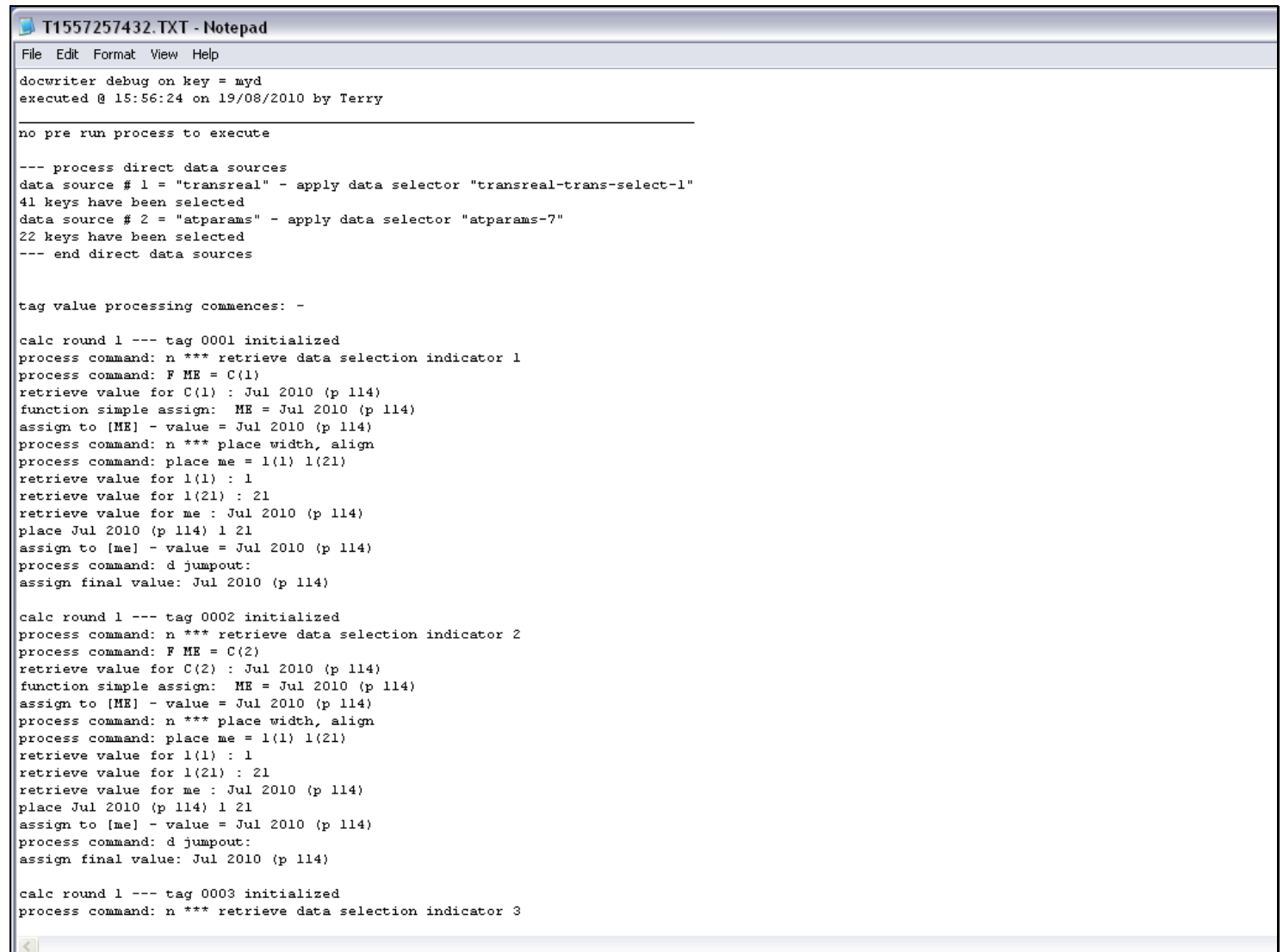
calc round 1 --- tag 0002 initialized
process command: n *** retrieve data selection indicator 2
process command: F ME = C(2)
retrieve value for C(2) : Jul 2010 (p 114)
function simple assign: ME = Jul 2010 (p 114)
assign to [ME] - value = Jul 2010 (p 114)
process command: n *** place width, align
process command: place me = 1(1) 1(21)
retrieve value for 1(1) : 1
retrieve value for 1(21) : 21
retrieve value for me : Jul 2010 (p 114)
place Jul 2010 (p 114) 1 21
assign to [me] - value = Jul 2010 (p 114)
process command: d jumpout:
assign final value: Jul 2010 (p 114)

calc round 1 --- tag 0003 initialized
process command: n *** retrieve data selection indicator 3
```

Slide notes

Here we can see the detail of each Tag as it is processed, with every step listed. For a Report with many Tags, this can result in a very long Report, and in such cases it is probably better to use the option to debug 1 Tag at a time, then resolve the Tag, then move on to others.

Slide 16 - Slide 16



```
T1557257432.TXT - Notepad
File Edit Format View Help

docwriter debug on key = myd
executed @ 15:56:24 on 19/08/2010 by Terry

no pre run process to execute

--- process direct data sources
data source # 1 = "transreal" - apply data selector "transreal-trans-select-1"
41 keys have been selected
data source # 2 = "atparams" - apply data selector "atparams-7"
22 keys have been selected
--- end direct data sources

tag value processing commences: -

calc round 1 --- tag 0001 initialized
process command: n *** retrieve data selection indicator 1
process command: F ME = C(1)
retrieve value for C(1) : Jul 2010 (p 114)
function simple assign: ME = Jul 2010 (p 114)
assign to [ME] - value = Jul 2010 (p 114)
process command: n *** place width, align
process command: place me = 1(1) 1(21)
retrieve value for 1(1) : 1
retrieve value for 1(21) : 21
retrieve value for me : Jul 2010 (p 114)
place Jul 2010 (p 114) 1 21
assign to [me] - value = Jul 2010 (p 114)
process command: d jumpout:
assign final value: Jul 2010 (p 114)

calc round 1 --- tag 0002 initialized
process command: n *** retrieve data selection indicator 2
process command: F ME = C(2)
retrieve value for C(2) : Jul 2010 (p 114)
function simple assign: ME = Jul 2010 (p 114)
assign to [ME] - value = Jul 2010 (p 114)
process command: n *** place width, align
process command: place me = 1(1) 1(21)
retrieve value for 1(1) : 1
retrieve value for 1(21) : 21
retrieve value for me : Jul 2010 (p 114)
place Jul 2010 (p 114) 1 21
assign to [me] - value = Jul 2010 (p 114)
process command: d jumpout:
assign final value: Jul 2010 (p 114)

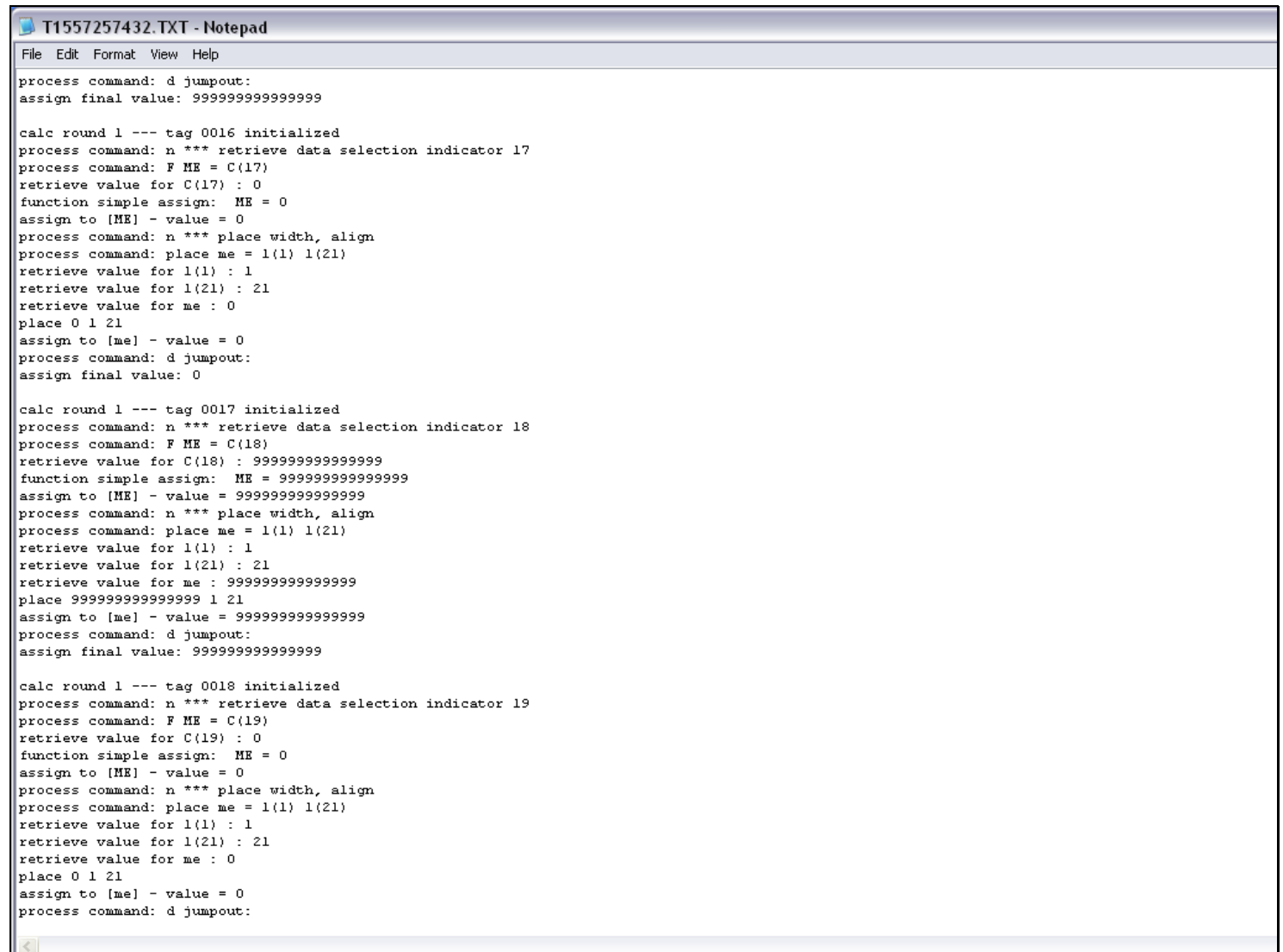
calc round 1 --- tag 0003 initialized
process command: n *** retrieve data selection indicator 3
```

Slide notes

Slide 17 - Slide 17



Slide notes

Slide 18 - Slide 18

```
T1557257432.TXT - Notepad
File Edit Format View Help

process command: d jumpout:
assign final value: 9999999999999999

calc round 1 --- tag 0016 initialized
process command: n *** retrieve data selection indicator 17
process command: F ME = C(17)
retrieve value for C(17) : 0
function simple assign: ME = 0
assign to [ME] - value = 0
process command: n *** place width, align
process command: place me = 1(1) 1(21)
retrieve value for 1(1) : 1
retrieve value for 1(21) : 21
retrieve value for me : 0
place 0 1 21
assign to [me] - value = 0
process command: d jumpout:
assign final value: 0

calc round 1 --- tag 0017 initialized
process command: n *** retrieve data selection indicator 18
process command: F ME = C(18)
retrieve value for C(18) : 9999999999999999
function simple assign: ME = 9999999999999999
assign to [ME] - value = 9999999999999999
process command: n *** place width, align
process command: place me = 1(1) 1(21)
retrieve value for 1(1) : 1
retrieve value for 1(21) : 21
retrieve value for me : 9999999999999999
place 9999999999999999 1 21
assign to [me] - value = 9999999999999999
process command: d jumpout:
assign final value: 9999999999999999

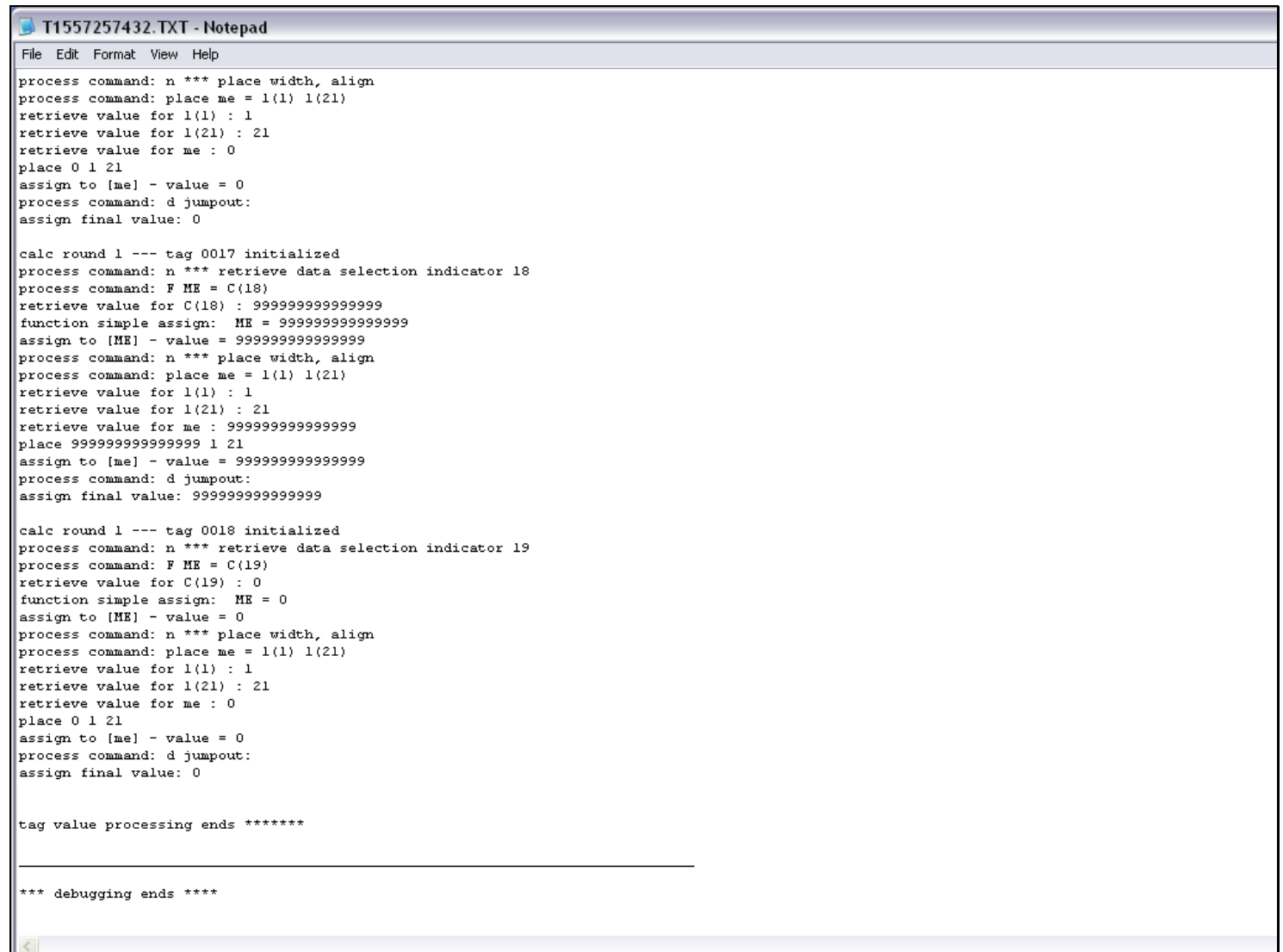
calc round 1 --- tag 0018 initialized
process command: n *** retrieve data selection indicator 19
process command: F ME = C(19)
retrieve value for C(19) : 0
function simple assign: ME = 0
assign to [ME] - value = 0
process command: n *** place width, align
process command: place me = 1(1) 1(21)
retrieve value for 1(1) : 1
retrieve value for 1(21) : 21
retrieve value for me : 0
place 0 1 21
assign to [me] - value = 0
process command: d jumpout:
```

Slide notes

Slide 19 - Slide 19



Slide notes

Slide 20 - Slide 20

```
T1557257432.TXT - Notepad
File Edit Format View Help

process command: n *** place width, align
process command: place me = 1(1) 1(21)
retrieve value for 1(1) : 1
retrieve value for 1(21) : 21
retrieve value for me : 0
place 0 1 21
assign to [me] - value = 0
process command: d jumpout:
assign final value: 0

calc round 1 --- tag 0017 initialized
process command: n *** retrieve data selection indicator 18
process command: F ME = C(18)
retrieve value for C(18) : 999999999999999
function simple assign: ME = 999999999999999
assign to [ME] - value = 999999999999999
process command: n *** place width, align
process command: place me = 1(1) 1(21)
retrieve value for 1(1) : 1
retrieve value for 1(21) : 21
retrieve value for me : 999999999999999
place 999999999999999 1 21
assign to [me] - value = 999999999999999
process command: d jumpout:
assign final value: 999999999999999

calc round 1 --- tag 0018 initialized
process command: n *** retrieve data selection indicator 19
process command: F ME = C(19)
retrieve value for C(19) : 0
function simple assign: ME = 0
assign to [ME] - value = 0
process command: n *** place width, align
process command: place me = 1(1) 1(21)
retrieve value for 1(1) : 1
retrieve value for 1(21) : 21
retrieve value for me : 0
place 0 1 21
assign to [me] - value = 0
process command: d jumpout:
assign final value: 0

tag value processing ends *****

*** debugging ends ****
```

Slide notes